

SHEET#  
AUSSIE II-29

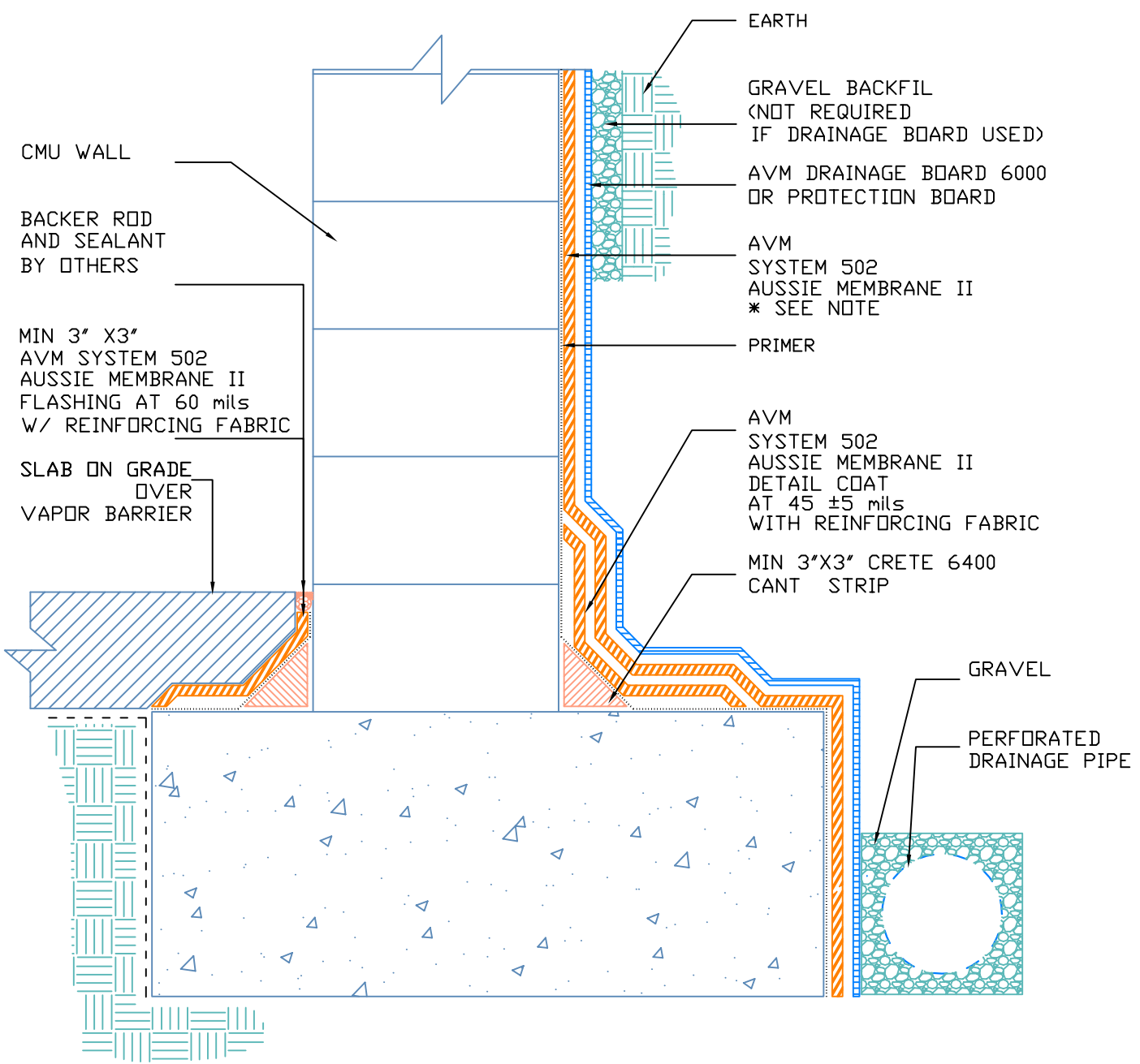
SLAB ON GRADE AT TOP OF FOOTING  
AVM SYSTEM 502 AUSSIE MEMBRANE II  
FLUID APPLIED WATERPROOFING



EDITION  
2

WWW.AVMINDUSTRIES.COM

INDUSTRIES, INC.  
(818) 888-0050



NOTE:

- FOR PROPER MEMBRANE THICKNESS AND APPROPRIATE PROTECTION BOARDS, REFER TO AUSSIE II "MIN. THICKNESS TABLE".
- AVM BOTTOM DRAIN 12" IS ACCEPTABLE IN LIEU OF THE PERFORATED DRAINAGE PIPE (CHECK LOCAL BUILDING CODES FOR APPROVAL).
- CONTACT AVM IF NO DRAIN BOARD TYPE IS SPECIFIED.