

SHEET#  
FEC100-02 P

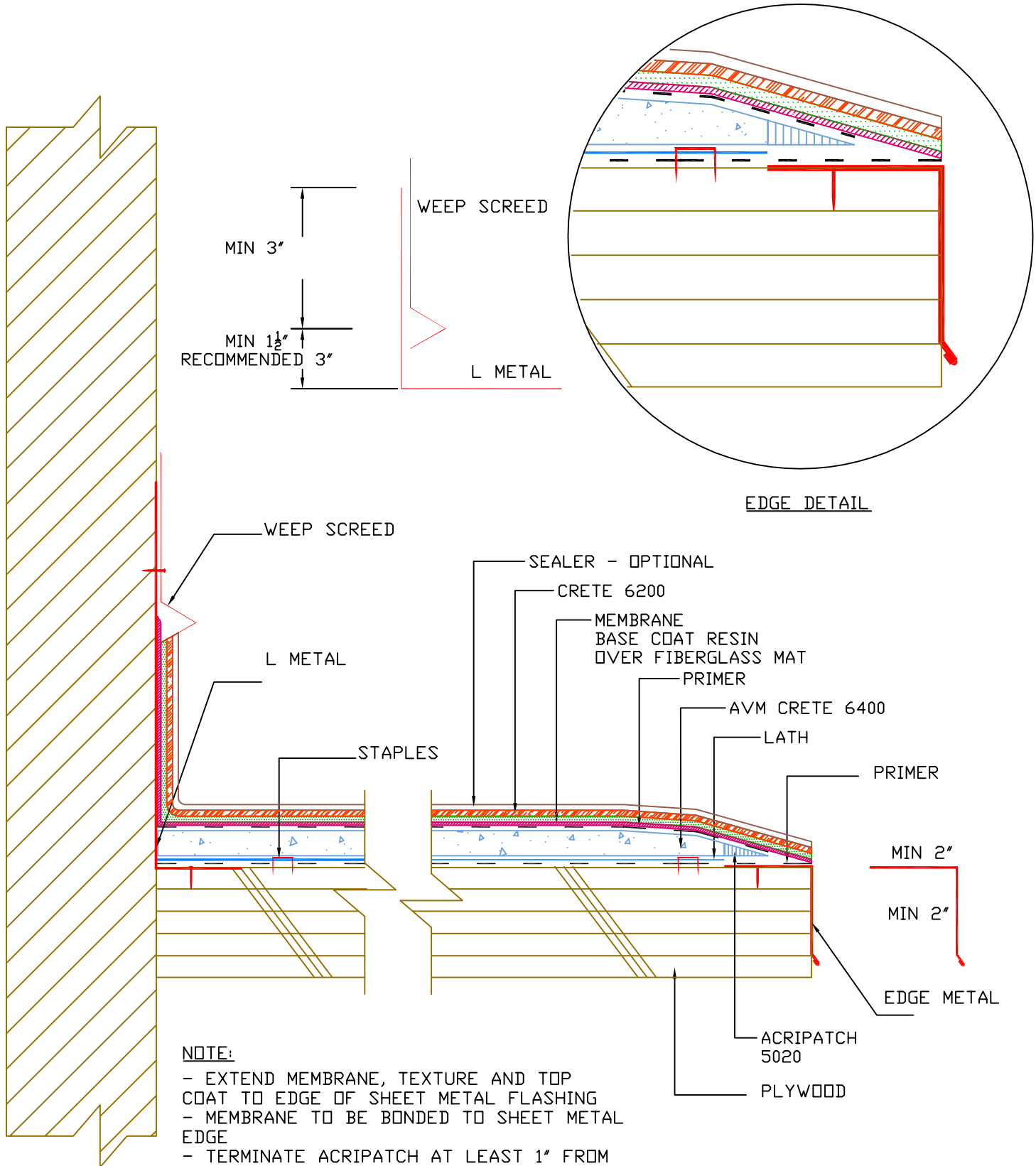
AVM SYSTEM 100 FOREVERCOAT  
OVER PLYWOOD



EDITION  
2

WWW.AVMINDUSTRIES.COM

INDUSTRIES, INC.  
(818) 888-0050



**NOTE:**  
 - EXTEND MEMBRANE, TEXTURE AND TOP COAT TO EDGE OF SHEET METAL FLASHING  
 - MEMBRANE TO BE BONDED TO SHEET METAL EDGE  
 - TERMINATE AC RIPATCH AT LEAST 1" FROM EDGE