

SHEET#
FEC100-01 C

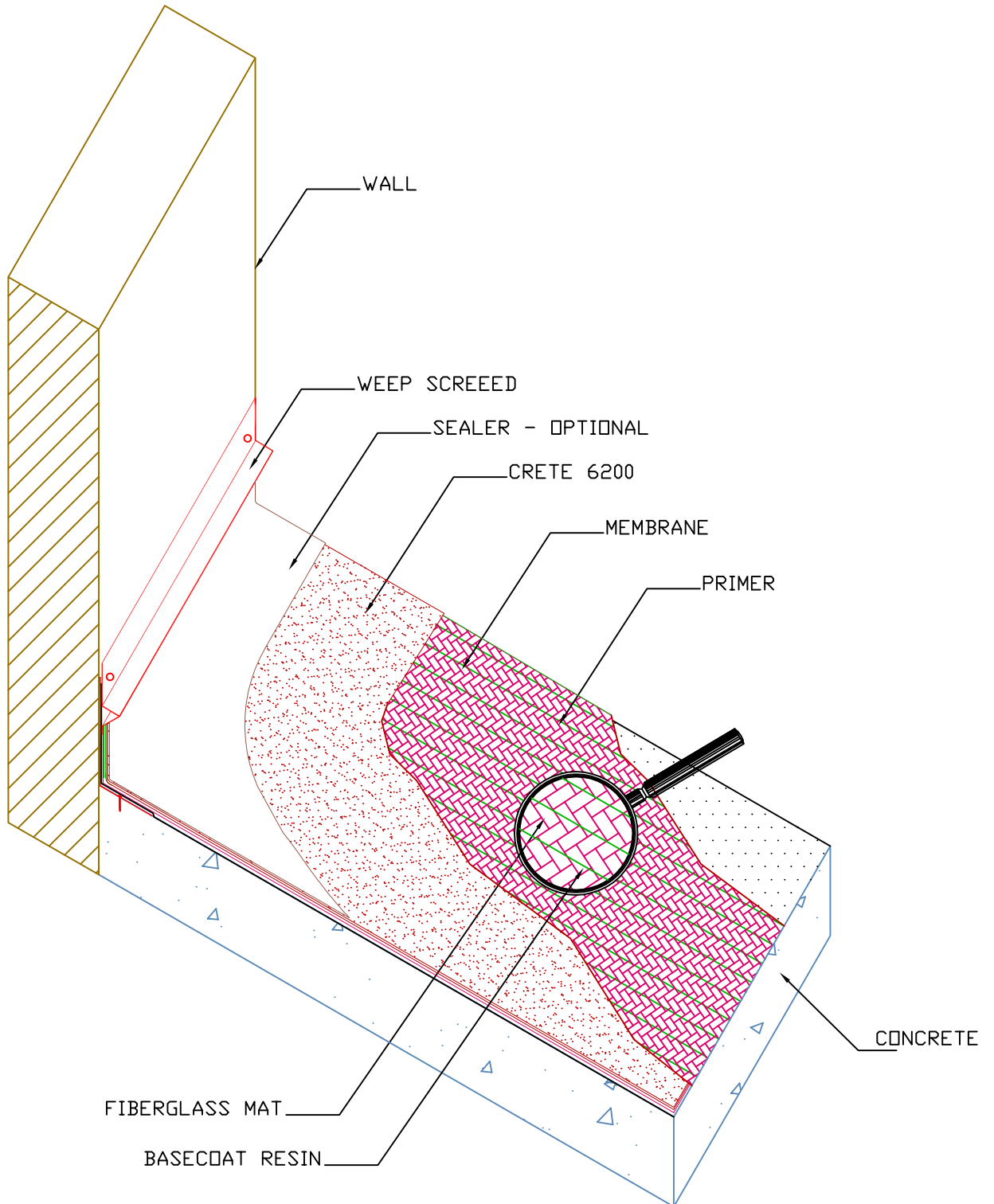
AVM SYSTEM 100 FOREVERCOAT
OVER CONCRETE



INDUSTRIES, INC.
(818) 888-0050

EDITION
2

WWW.AVMINDUSTRIES.COM



SHEET#
FEC100-10 C

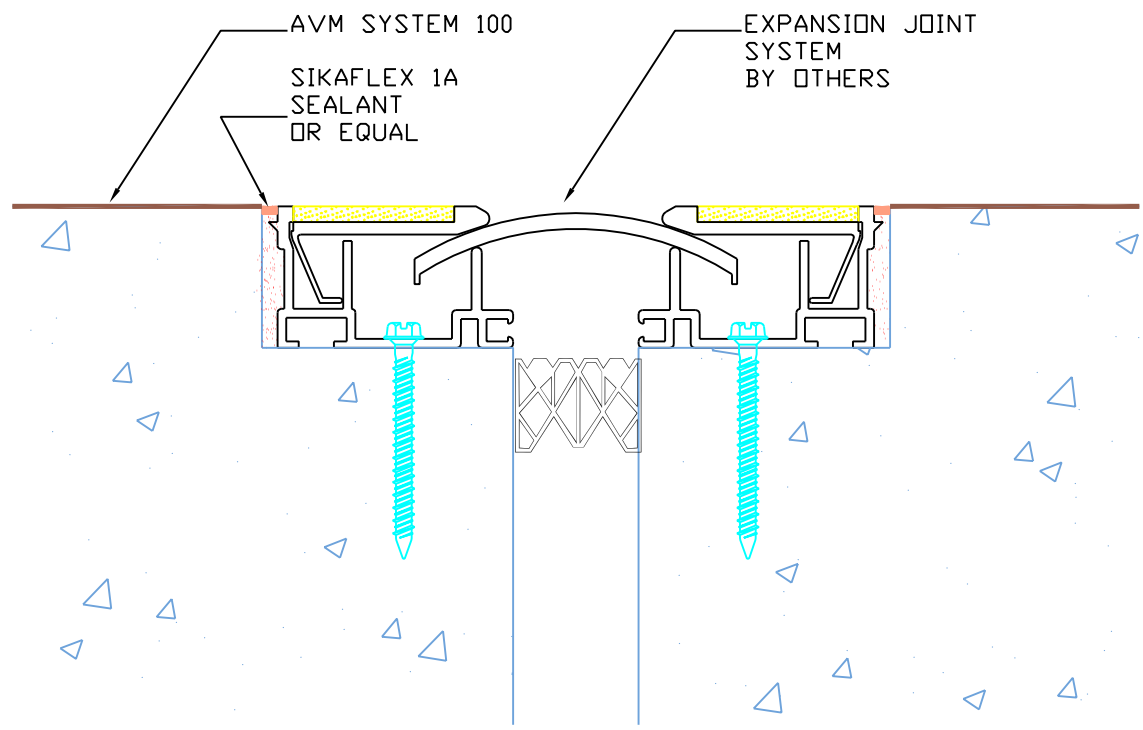
EXPANSION JOINT
AVM SYSTEM 100 FOREVERCOAT
OVER CONCRETE



EDITION
1

WWW.AVMINDUSTRIES.COM

INDUSTRIES, INC.
(818) 888-0050



SHEET#
FEC100-01 P

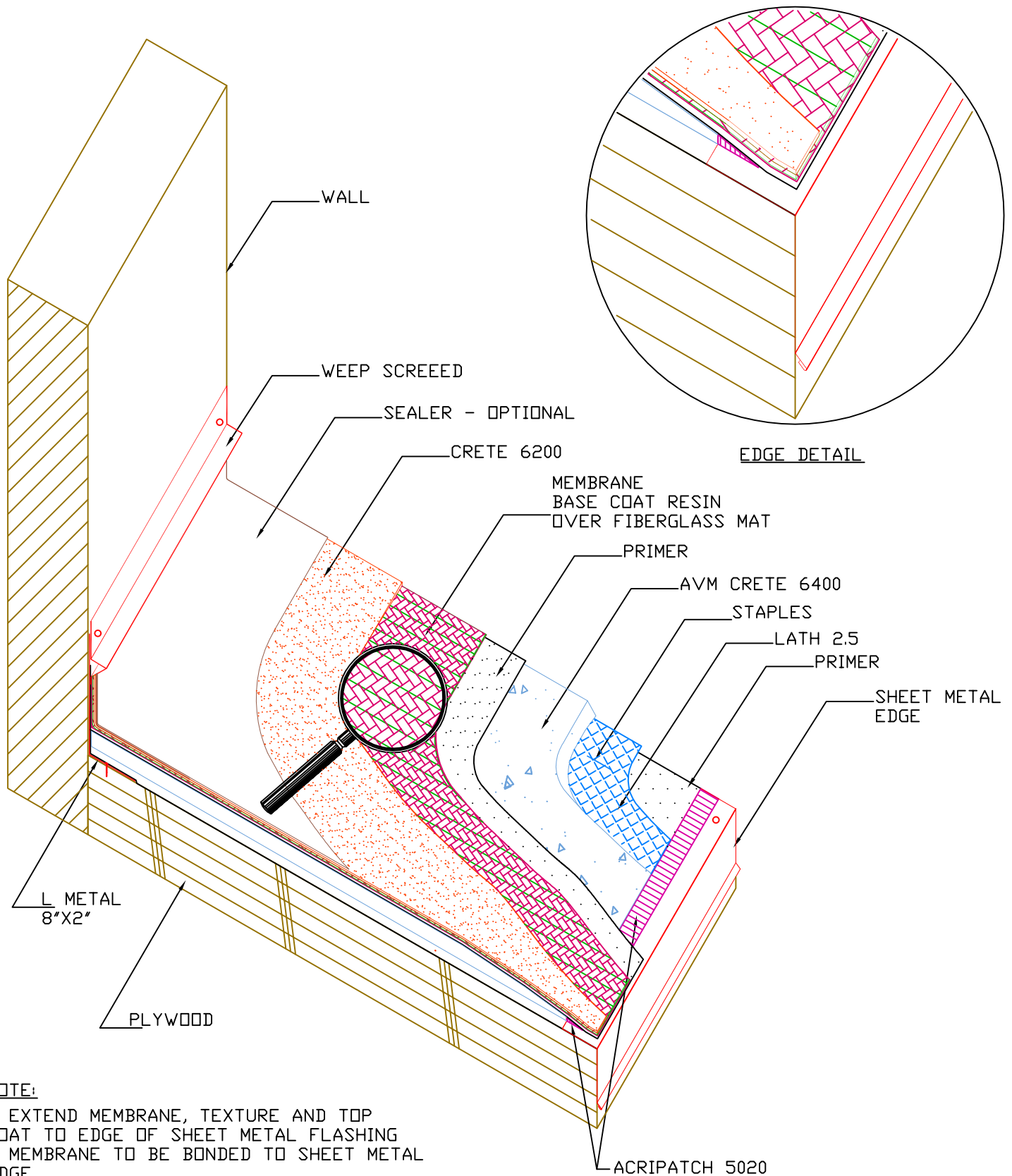
AVM SYSTEM 100 FOREVERCOAT
OVER PLYWOOD



EDITION
2

WWW.AVMINDUSTRIES.COM

INDUSTRIES, INC.
(818) 888-0050



NOTE:

- EXTEND MEMBRANE, TEXTURE AND TOP COAT TO EDGE OF SHEET METAL FLASHING
- MEMBRANE TO BE BONDED TO SHEET METAL EDGE
- TERMINATE ACRIPATCH AT LEAST 1" FROM EDGE

ACRIPATCH 5020

SHEET#
FEC100-02 C

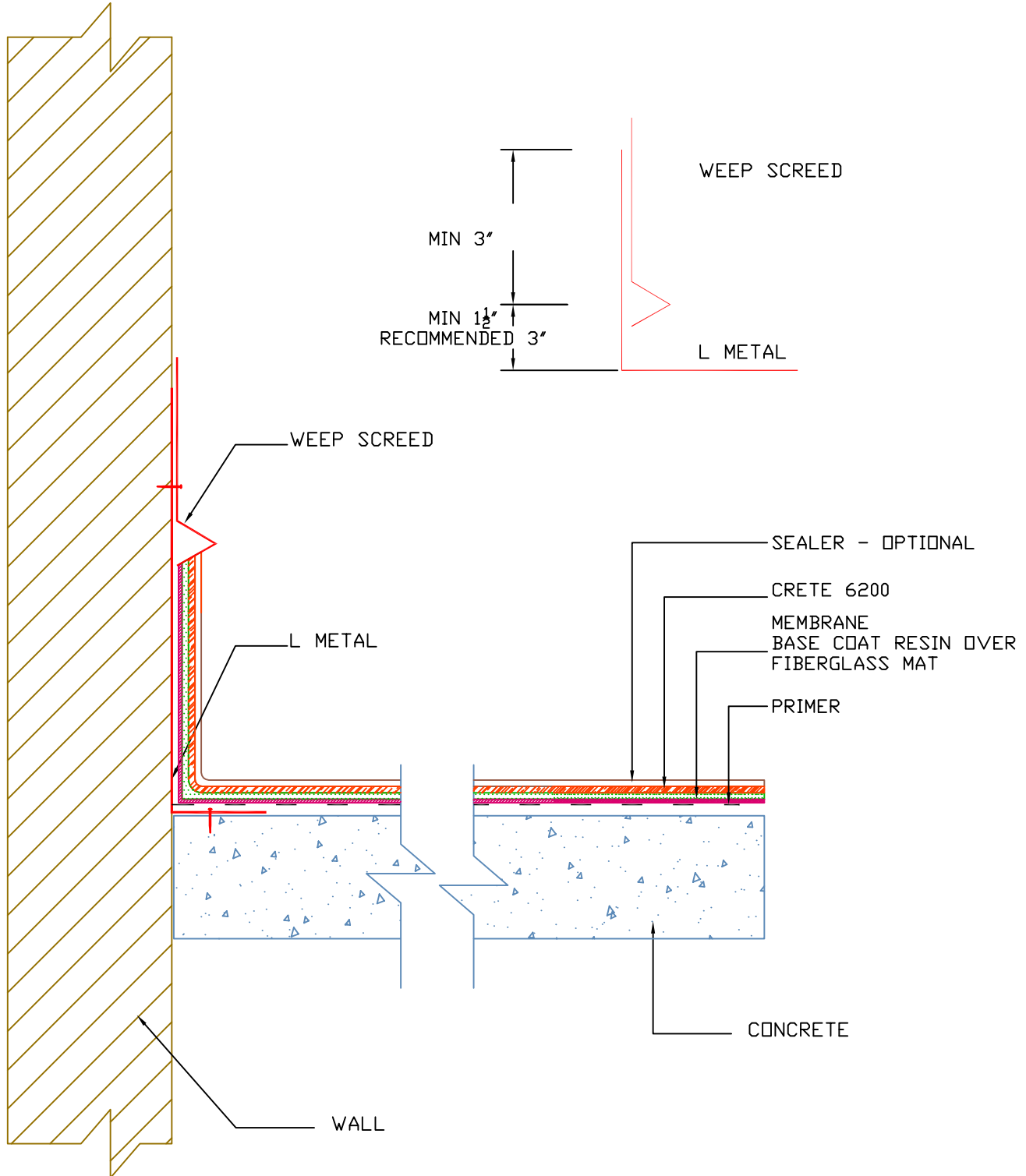
AVM SYSTEM 100 FOREVERCOAT
OVER CONCRETE



EDITION
2

WWW.AVMINDUSTRIES.COM

INDUSTRIES, INC.
(818) 888-0050



SHEET#
FEC100-02 P

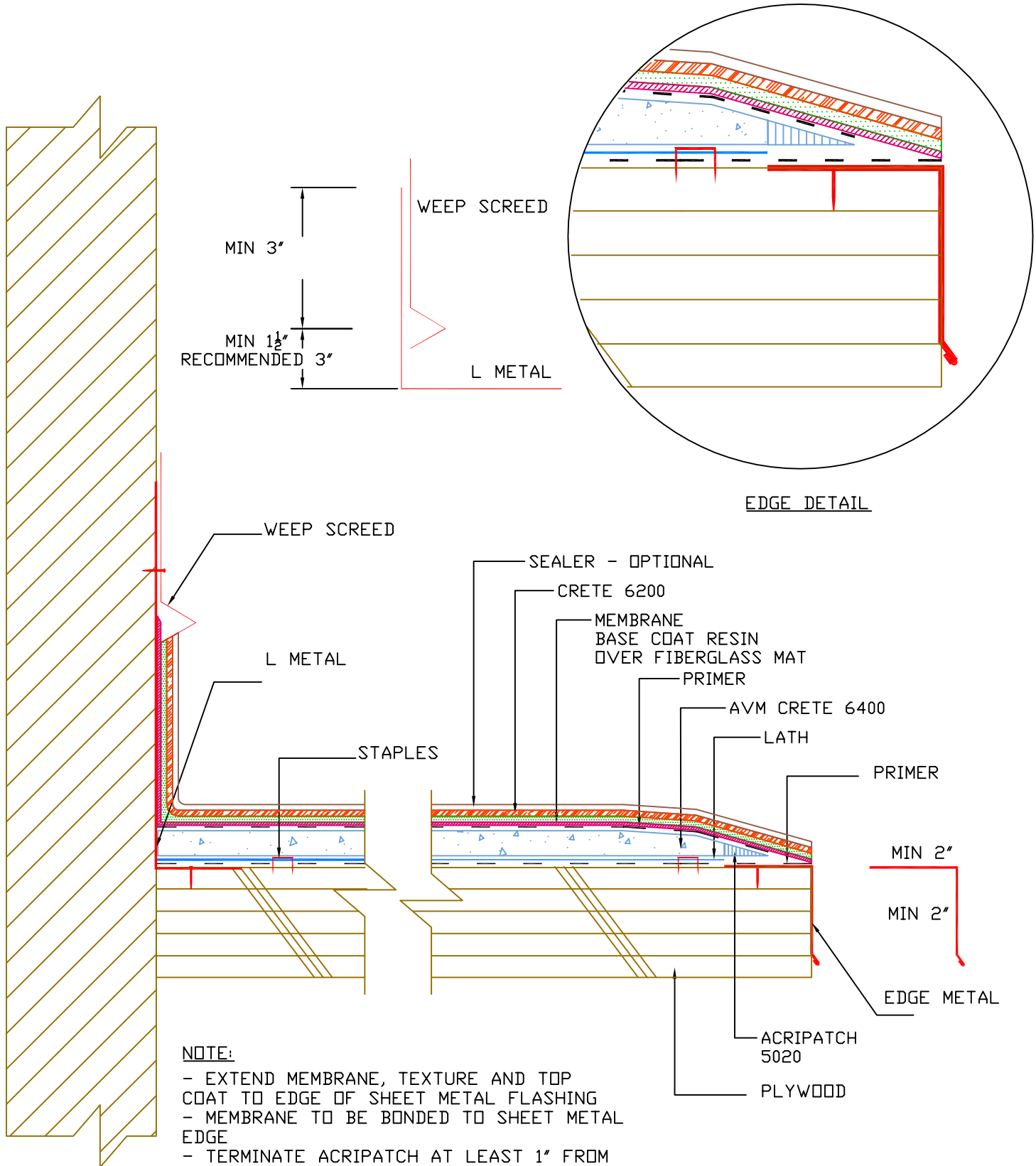
AVM SYSTEM 100 FOREVERCOAT
OVER PLYWOOD



EDITION
2

WWW.AVMINDUSTRIES.COM

INDUSTRIES, INC.
(818) 888-0050



NOTE:
 - EXTEND MEMBRANE, TEXTURE AND TOP COAT TO EDGE OF SHEET METAL FLASHING
 - MEMBRANE TO BE BONDED TO SHEET METAL EDGE
 - TERMINATE ACRIPATCH AT LEAST 1" FROM EDGE

SHEET#
FEC100-03 C

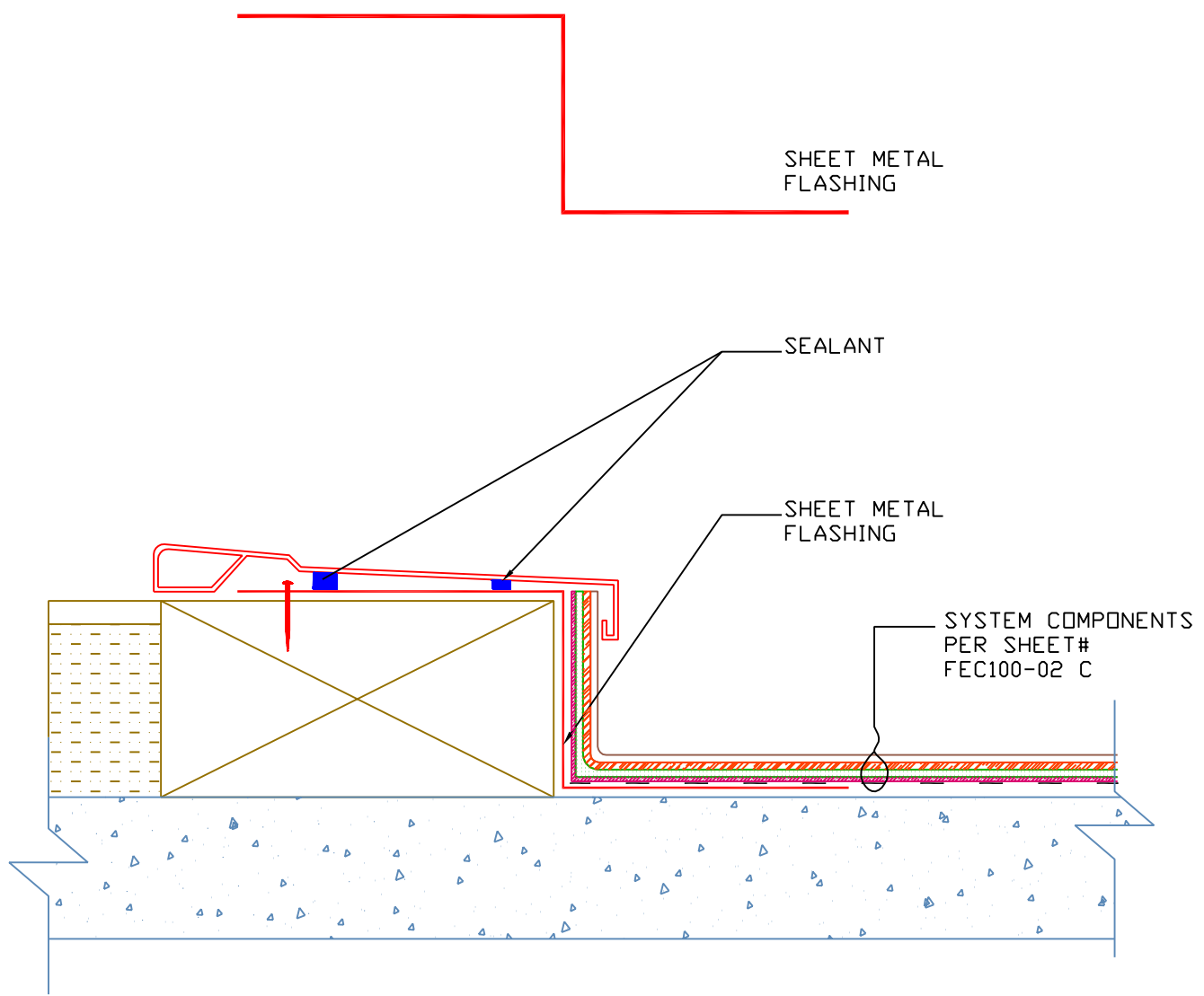
DECK TO TRESHOLD
AVM SYSTEM 100 FOREVERCOAT
OVER CONCRETE



EDITION
1

WWW.AVMINDUSTRIES.COM

INDUSTRIES, INC.
(818) 888-0050



SHEET#
FEC100-03 P

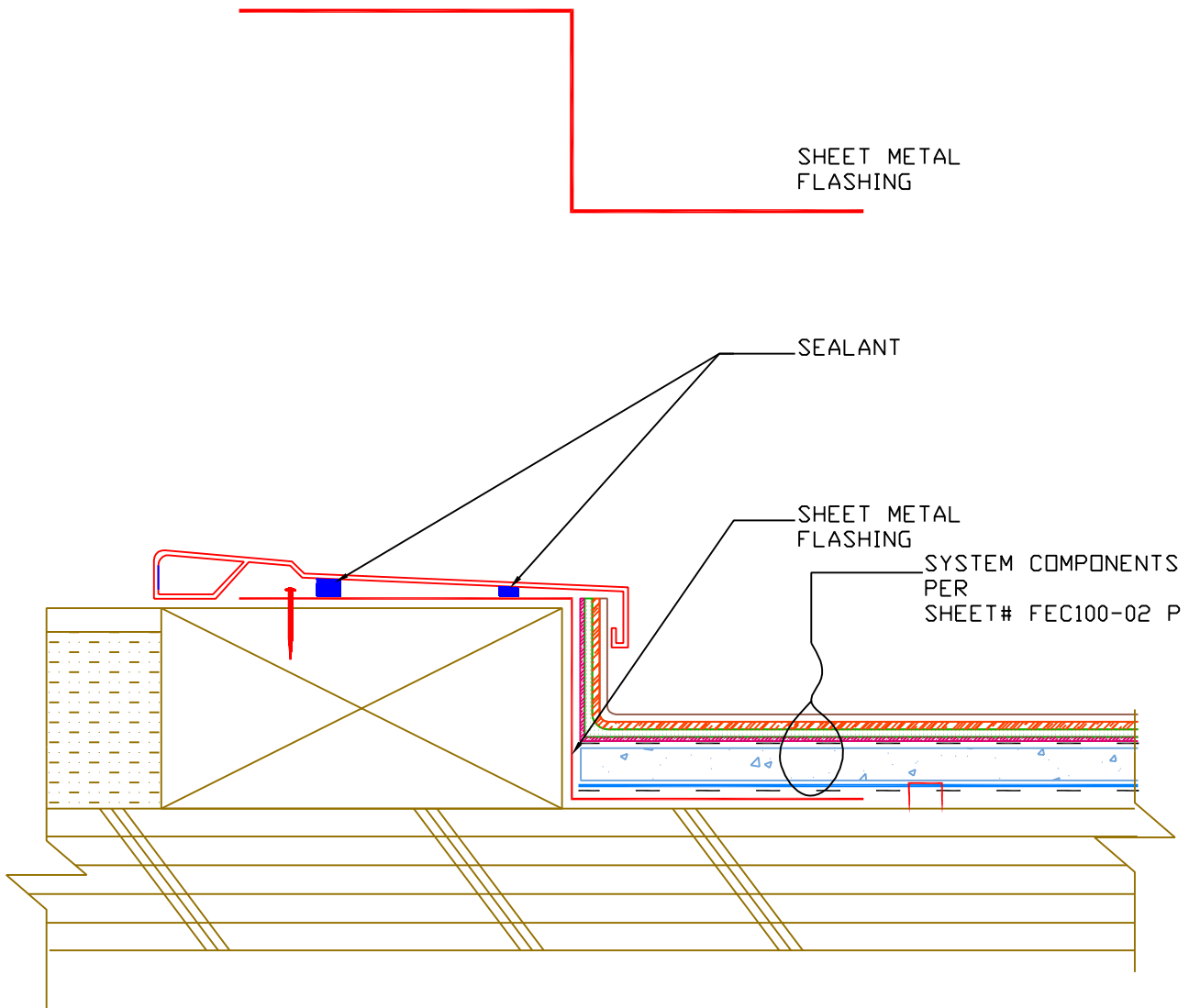
DECK TO TRESHOLD
AVM SYSTEM 100 FOREVERCOAT
OVER PLYWOOD



INDUSTRIES, INC.
(818) 888-0050

EDITION
1

WWW.AVMINDUSTRIES.COM



SHEET#
FEC100-04 C

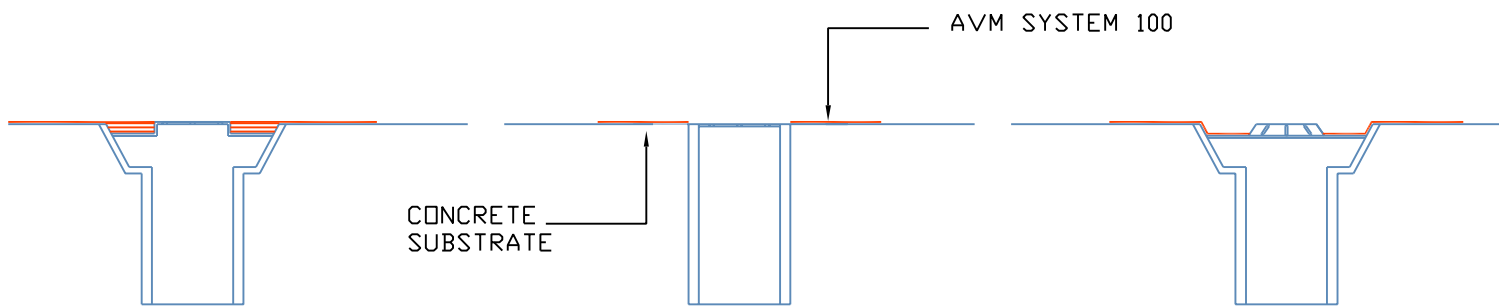
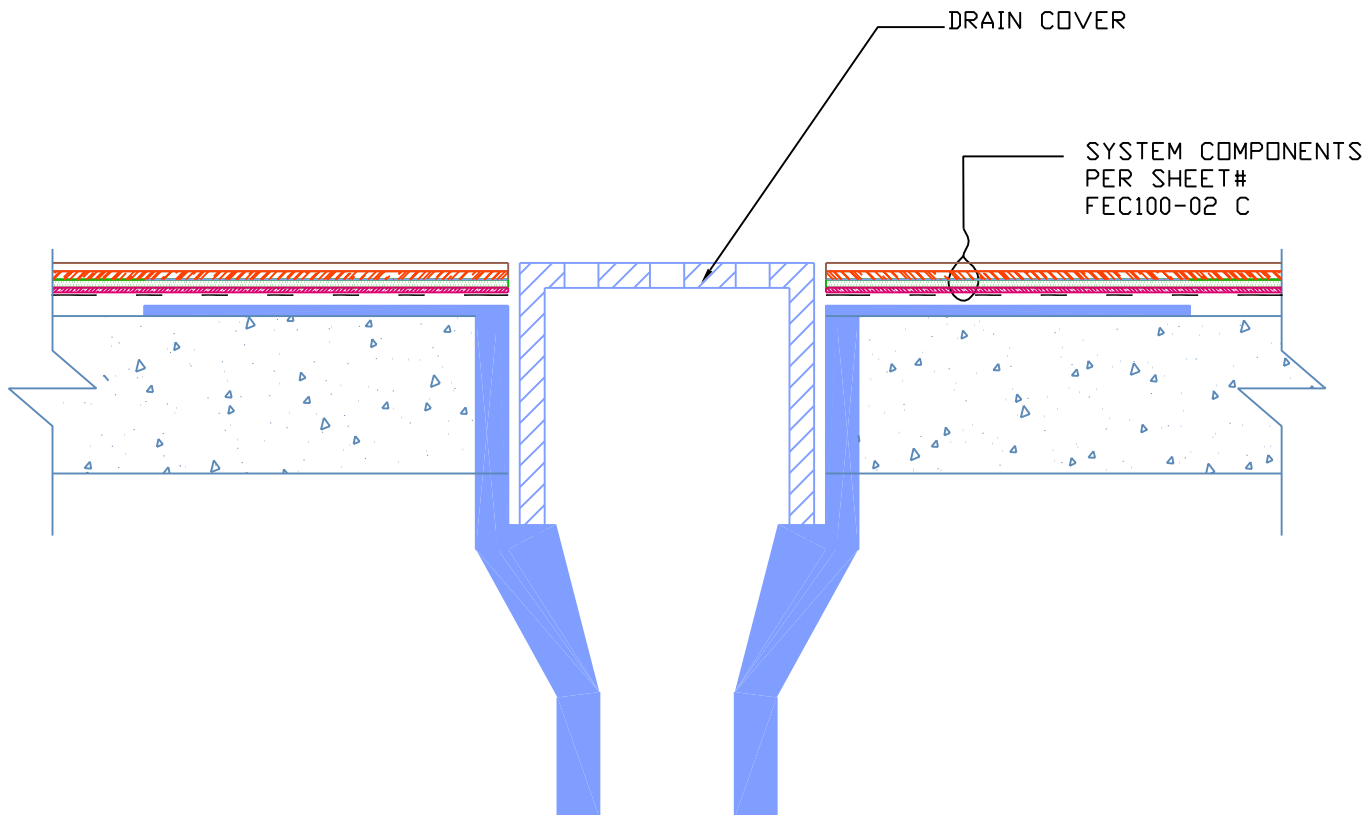
DECK AT DRAIN
AVM SYSTEM 100 FOREVERCOAT
OVER CONCRETE



INDUSTRIES, INC.
(818) 888-0050

EDITION
2

WWW.AVMINDUSTRIES.COM



OTHER ACCEPTABLE AREA DRAIN TYPES

SHEET#
FEC100-04 P

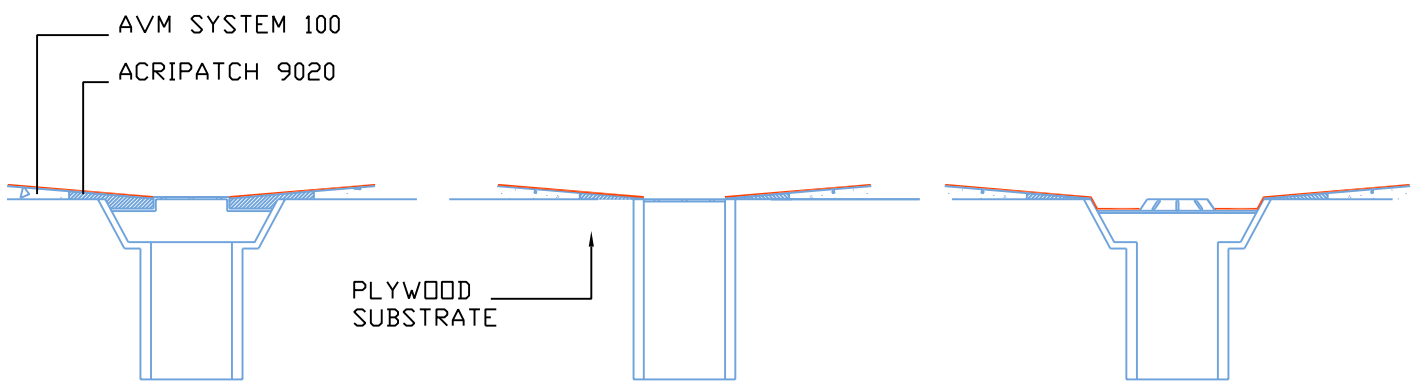
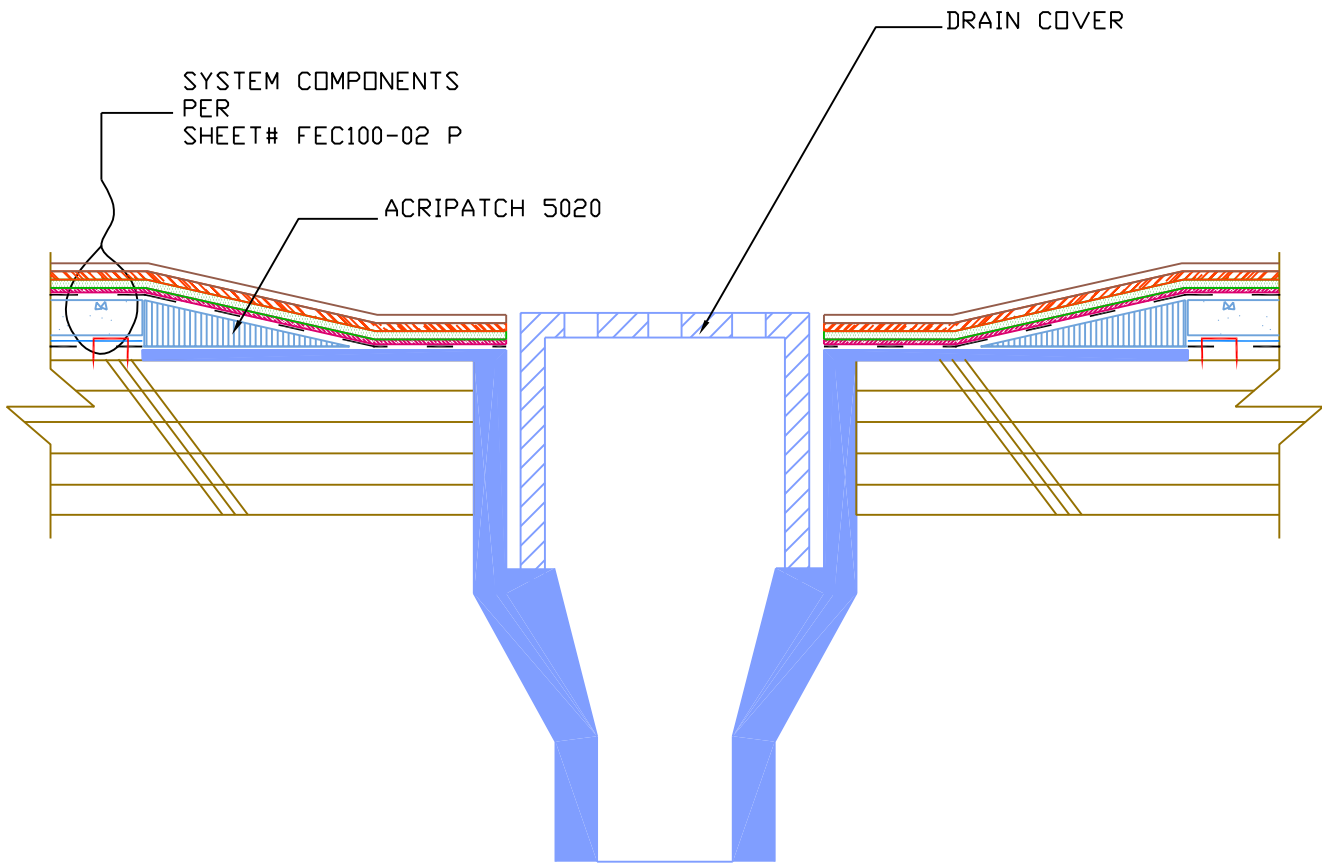
DECK AT DRAIN
AVM SYSTEM 100 FOREVERCOAT
OVER PLYWOOD



EDITION
2

WWW.AVMINDUSTRIES.COM

INDUSTRIES, INC.
(818) 888-0050



OTHER ACCEPTABLE AREA DRAIN TYPES

SHEET#
FEC100-05 C

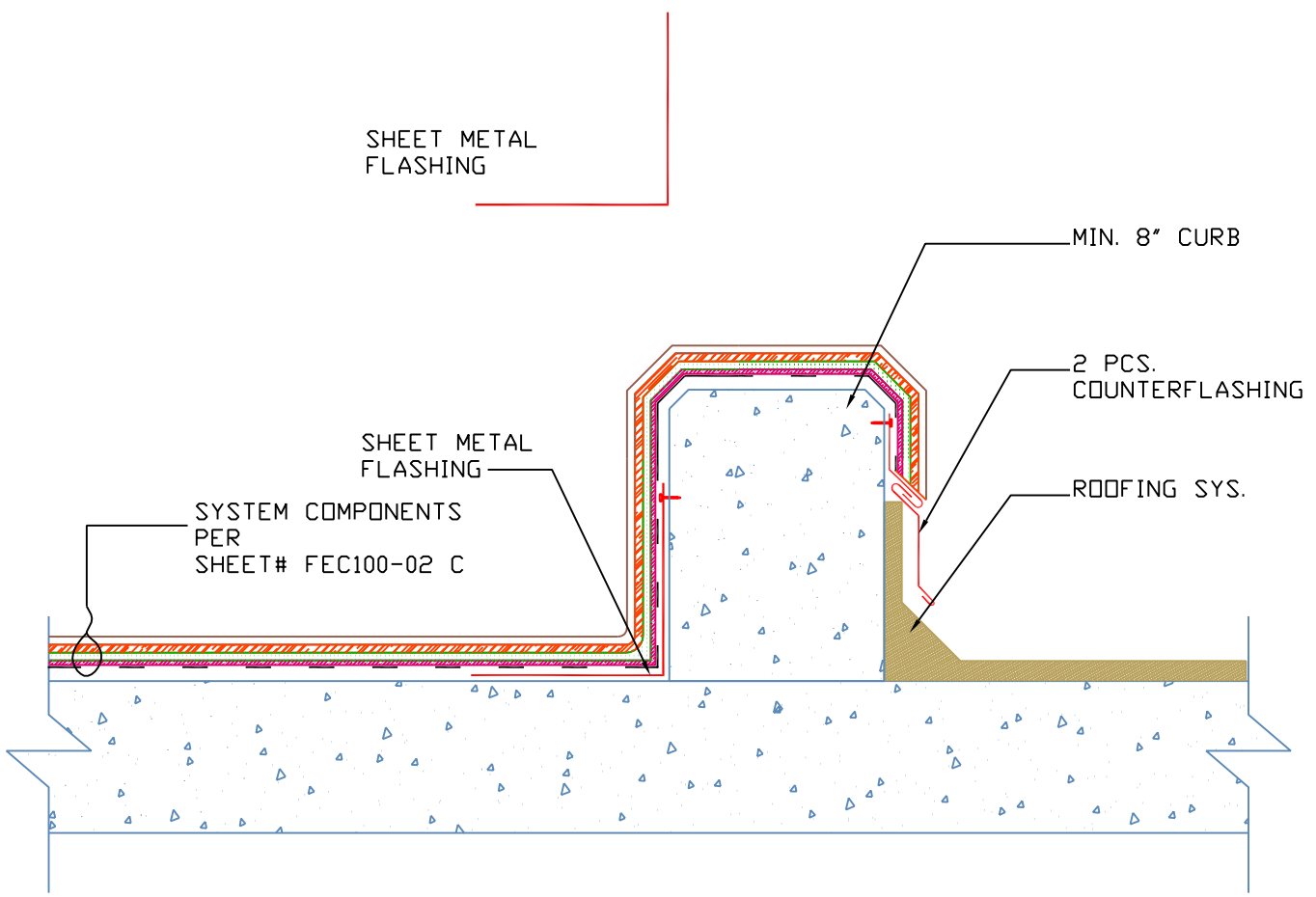
CURB AT TRANSITION TO BUILT UP ROOFING
AVM SYSTEM 100 FOREVERCOAT
OVER CONCRETE



EDITION
1

WWW.AVMINDUSTRIES.COM

INDUSTRIES, INC.
(818) 888-0050



SHEET#
FEC100-05 P

PIPE PENETRATION
AVM SYSTEM 100 FOREVERCOAT
OVER PLYWOOD

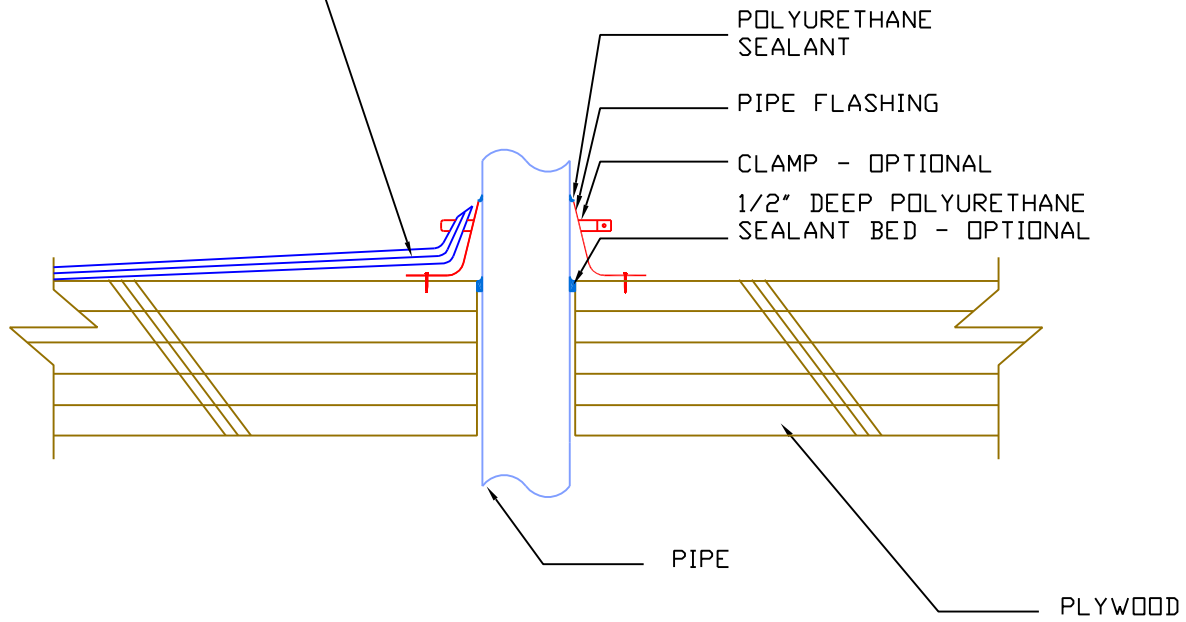


EDITION
1

WWW.AVMINDUSTRIES.COM

INDUSTRIES, INC.
(818) 888-0050

SYSTEM COMPONENTS
PER
SHEET# FEC100-02 P



SHEET#
FEC100-06 P

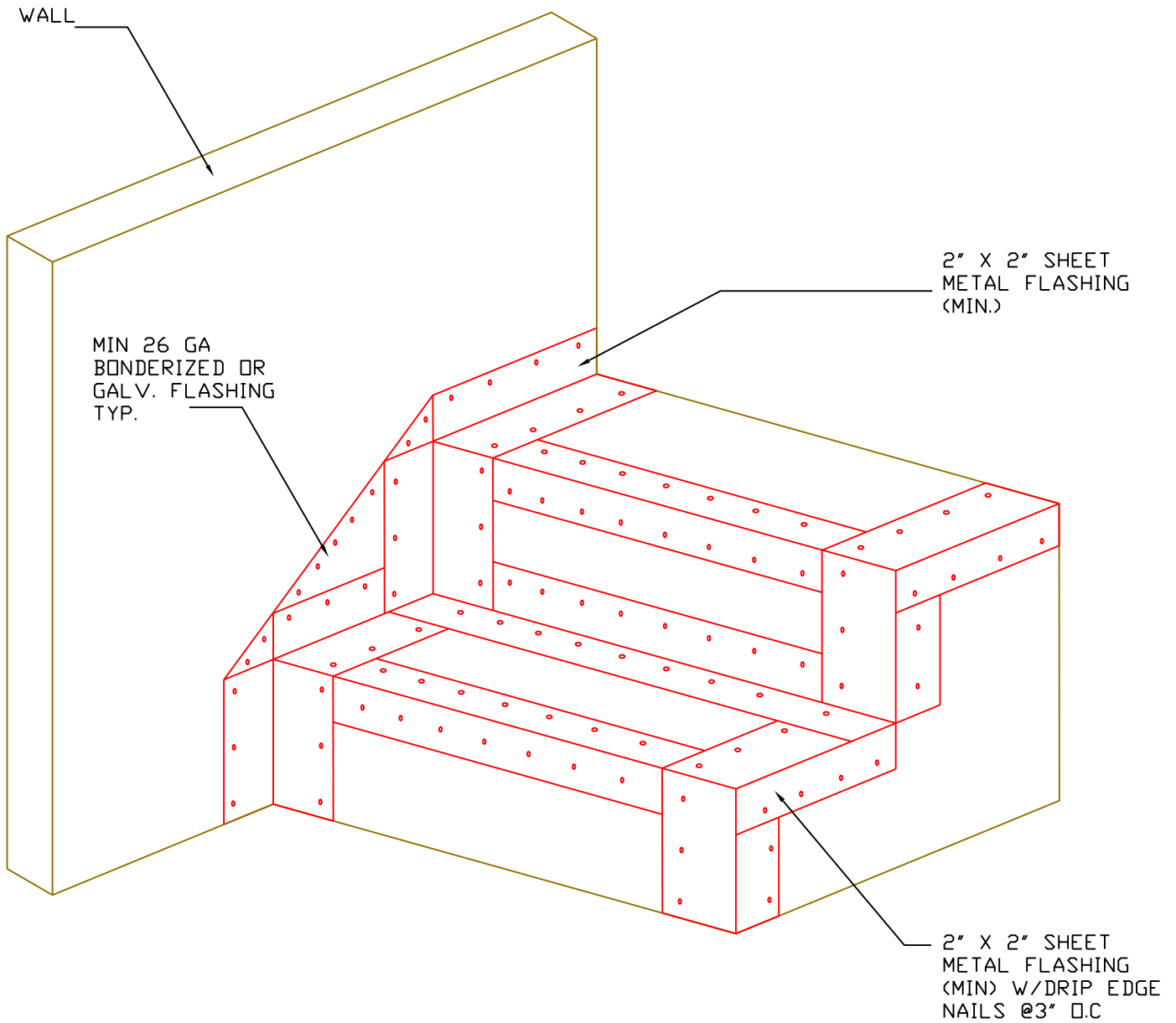
FLASHING AT STAIRS
AVM SYSTEM 100 FOREVERCOAT
OVER PLYWOOD



EDITION
1

WWW.AVMINDUSTRIES.COM

INDUSTRIES, INC.
(818) 888-0050



SHEET#
FEC100-07 P

AVM SYSTEM 100 FOREVERCOAT
OVER PLYWOOD
STAIR WITH METAL LATH AND CEMENT ON TREAD ONLY



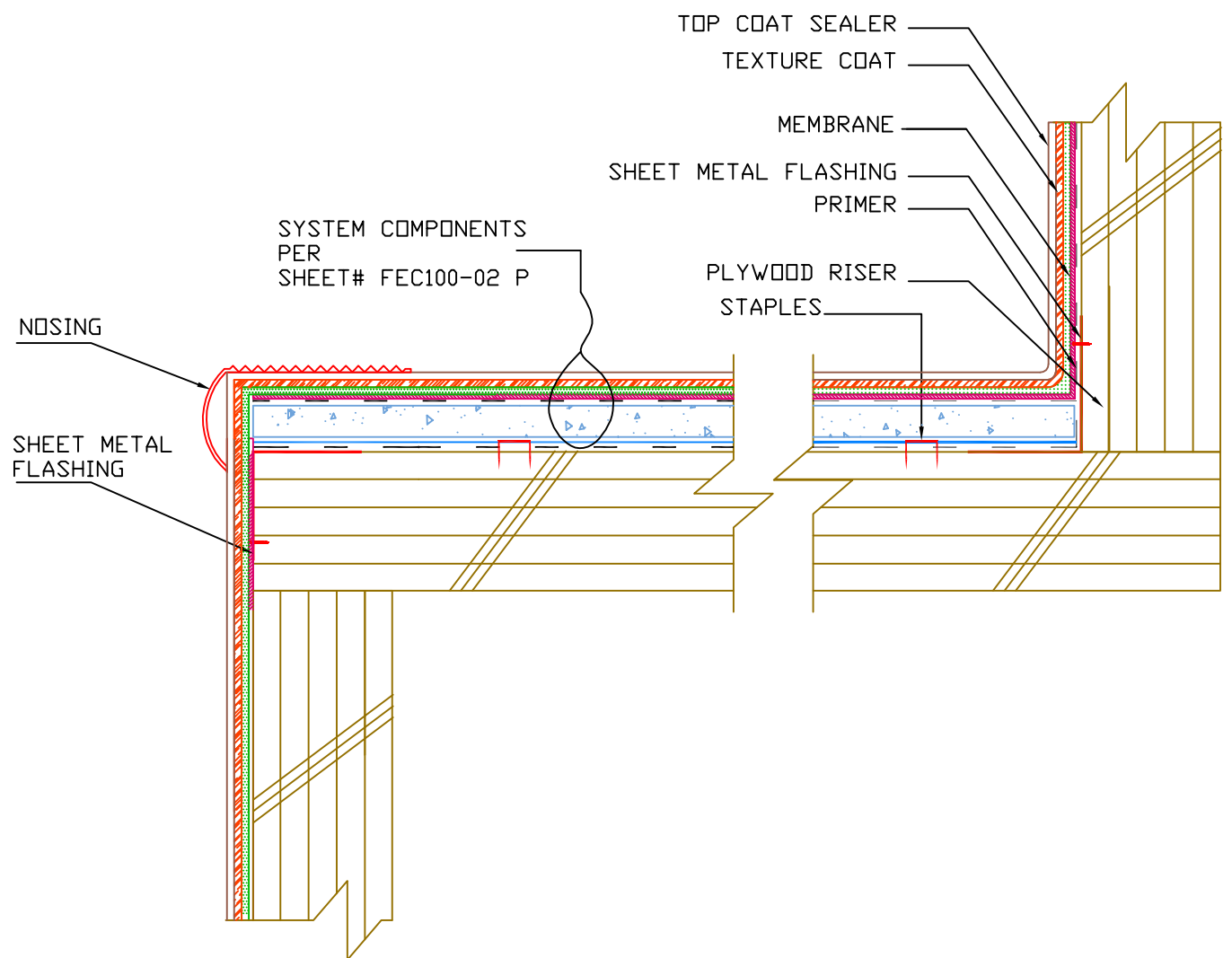
EDITION
2

WWW.AVMINDUSTRIES.COM

INDUSTRIES, INC.
(818) 888-0050

SHEET METAL FLASHING

SHEET METAL FLASHING



SHEET#
FEC100-08 P

AVM SYSTEM 100 FOREVERCOAT
OVER PLYWOOD
STAIR WITH METAL LATH AND CEMENT



EDITION
1

WWW.AVMINDUSTRIES.COM

INDUSTRIES, INC.
(818) 888-0050

