

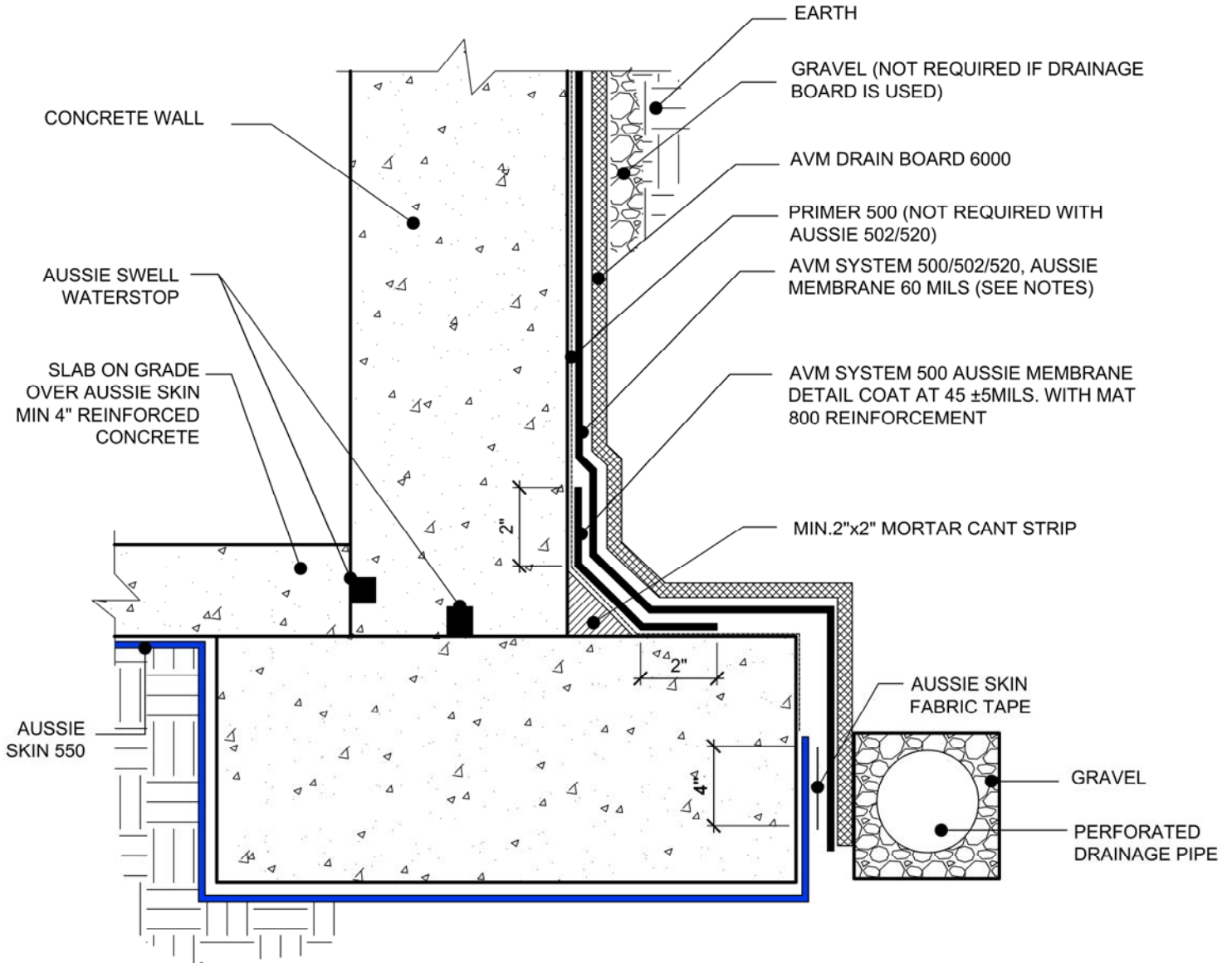
DETAIL #:

AVM-550-0002

AVM System 550

Aussie Skin 550

Slab on Grade over Aussie Skin, Concrete Walls



NOTES:

1. Aussie Skin 550 is a Heavy, Duty, Easy to Install, Puncture Resistant Sheet Waterproofing Membrane with added technologies creating excellent adhesion between the membrane and wet Concrete or Shot-Crete.
2. For proper membrane thickness and appropriate protection and drainage, refer to AVM System 500/502/520 Min Thickness Table.
3. Contact AVM if no drain board or protection board is specified.

Below Water Table Installations

Below the water table, drain board may be substituted with approved protection layer.

AVM Industries, Inc.
8245 Remmet Ave, Canoga Park, CA 91304

Quality Waterproofing Products

888.414.1041 818.888.0050
www.avmindustries.com

FILE NAME: 0550-0002

Protected by Copyright - AVM Industries, Inc. Revision Date 3/10/2017

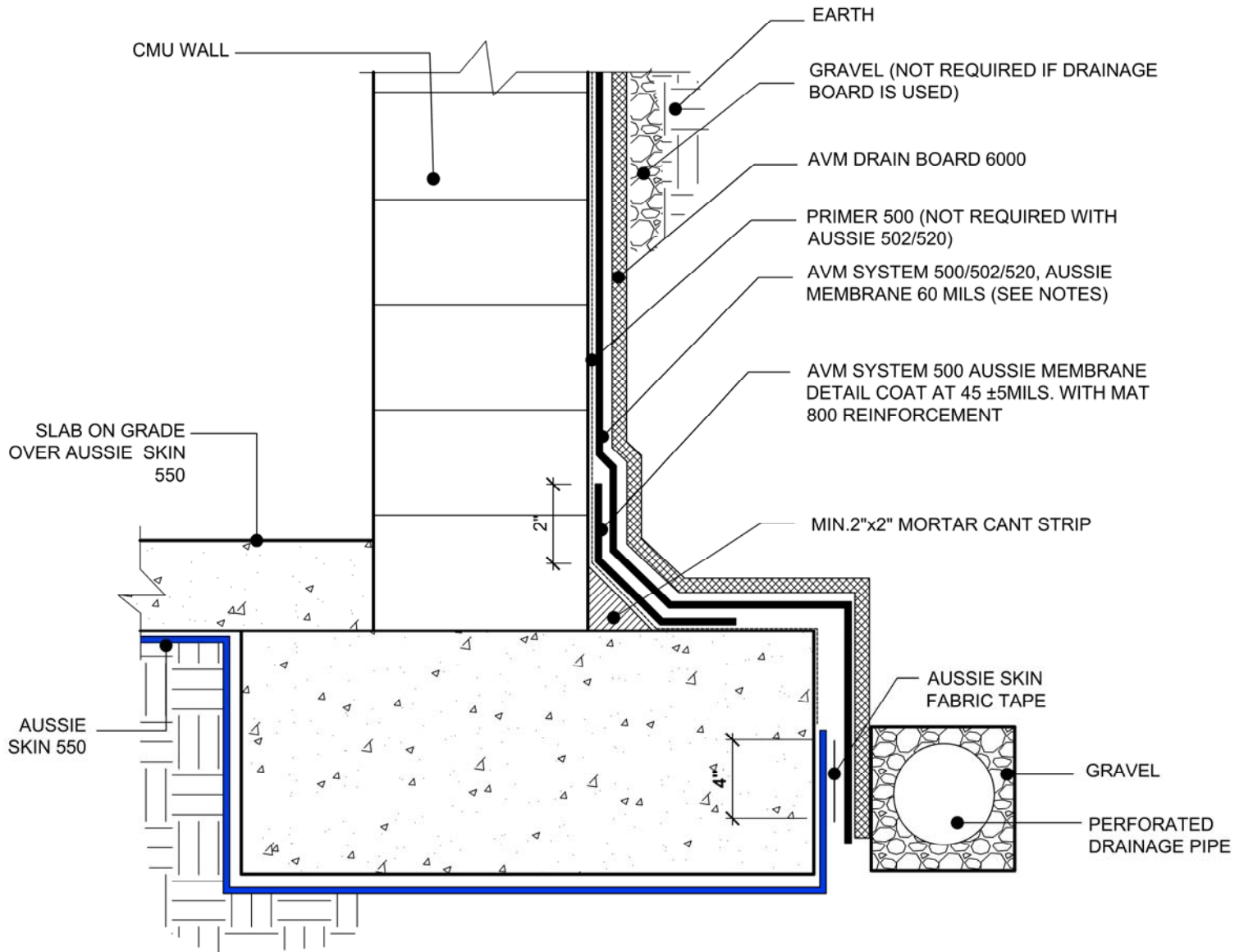
DETAIL #:

AVM-550-0004

AVM System 550

Aussie Skin 550

Slab on Grade over Aussie Skin, CMU (Block) Walls



NOTES:

1. Aussie Skin 550 is a Heavy, Duty, Easy to Install, Puncture Resistant Sheet Waterproofing Membrane with added technologies creating excellent adhesion between the membrane and wet Concrete or Shot-Crete.
2. For proper membrane thickness and appropriate protection and drainage, refer to AVM System 500/502/520 Min Thickness Table.
3. Contact AVM if no drain board or protection board is specified.

Below Water Table Installations

Below the water table, drain board may be substituted with approved protection layer.

AVM Industries, Inc.
8245 Remmet Ave, Canoga Park, CA 91304

Quality Waterproofing Products

888.414.1041 818.888.0050
www.avmindustries.com

FILE NAME: 0550-0004

Protected by Copyright - AVM Industries, Inc. Revision Date 3/10/2017

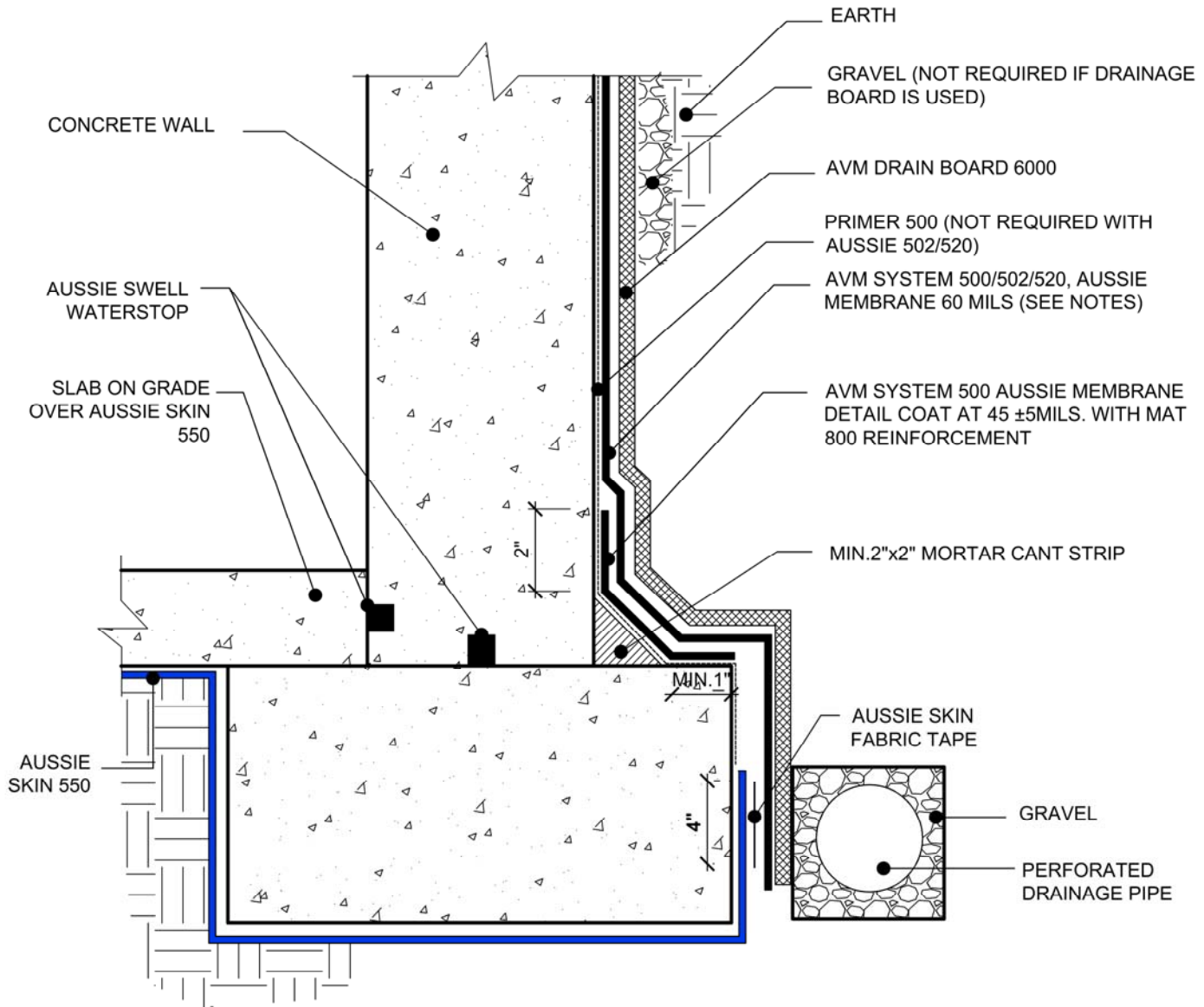
DETAIL #:

AVM-550-0006

AVM System 550

Aussie Skin 550

Slab on Grade over Aussie Skin,
Concrete Walls, Minimal Exposed
Footing



NOTES:

1. Aussie Skin 550 is a Heavy, Duty, Easy to Install, Puncture Resistant Sheet Waterproofing Membrane with added technologies creating excellent adhesion between the membrane and wet Concrete or Shot-Crete.
2. For proper membrane thickness and appropriate protection and drainage, refer to AVM System 500/502/520 Min Thickness Table.
3. Contact AVM if no drain board or protection board is specified.
4. Exposed top of footing is Less than 3"
5. Inside corner (Wall-to-Footing) shown with Water Stop

Below Water Table Installations

Below the water table, drain board may be substituted with approved protection layer.

AVM Industries, Inc.
8245 Remmet Ave, Canoga Park, CA 91304

Quality Waterproofing Products

888.414.1041 818.888.0050
www.avmindustries.com

FILE NAME: 0550-0006

Protected by Copyright - AVM Industries, Inc. Revision Date 3/10/2017

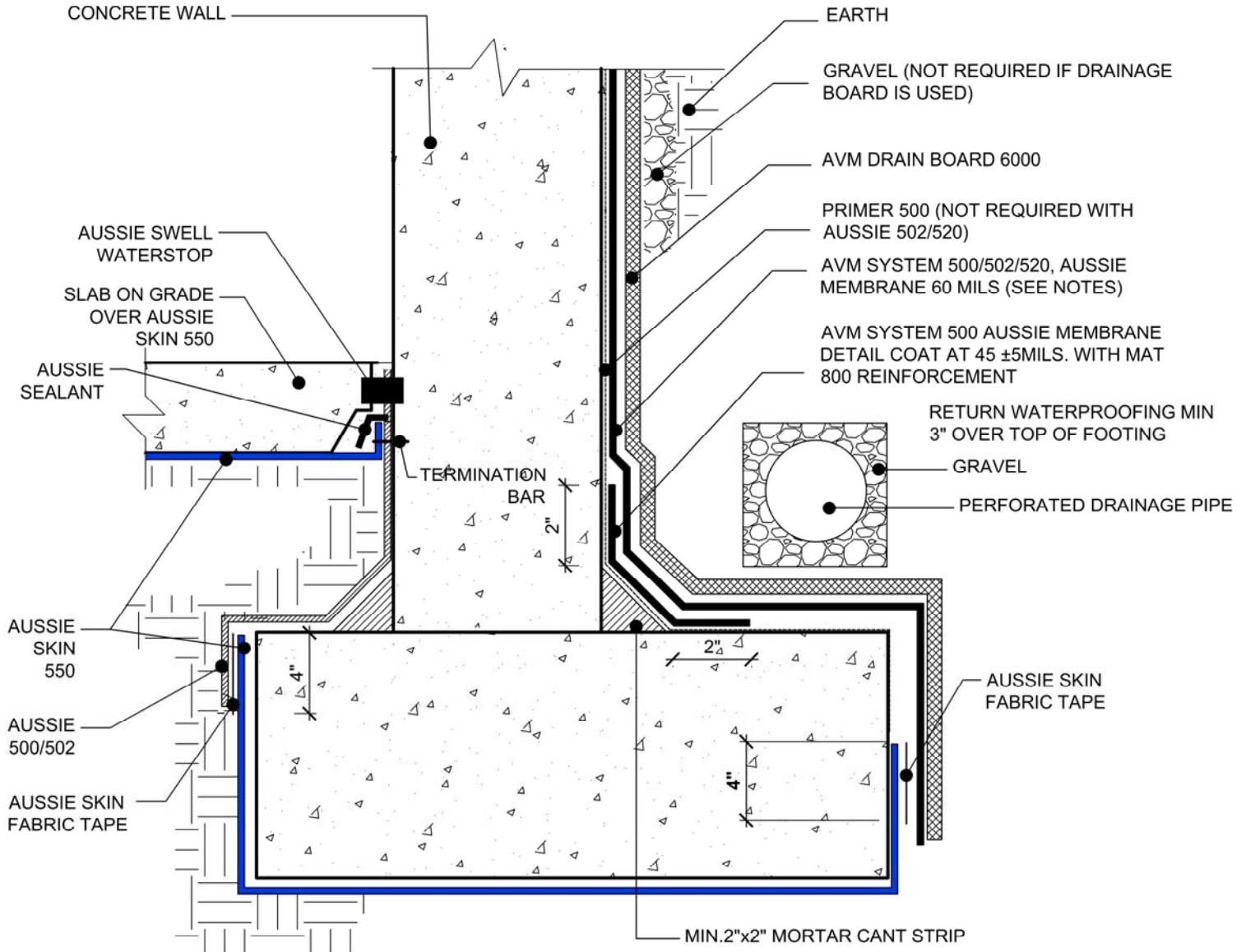
DETAIL #:

AVM-550-0008

AVM System 550

Aussie Skin 550

Elevated Slab over Aussie Skin, Concrete Walls



NOTES:

1. Aussie Skin 550 is a Heavy, Duty, Easy to Install, Puncture Resistant Sheet Waterproofing Membrane with added technologies creating excellent adhesion between the membrane and wet Concrete or Shot-Crete.
2. For proper membrane thickness and appropriate protection and drainage, refer to AVM System 500/502/520 Min Thickness Table.
3. Contact AVM if no drain board or protection board is specified.

Below Water Table Installations

Below the water table, drain board may be substituted with approved protection layer.

AVM Industries, Inc.
8245 Remmet Ave, Canoga Park, CA 91304

Quality Waterproofing Products

888.414.1041 818.888.0050
www.avmindustries.com

FILE NAME: 0550-0008

Protected by Copyright - AVM Industries, Inc. Revision Date 3/10/2017

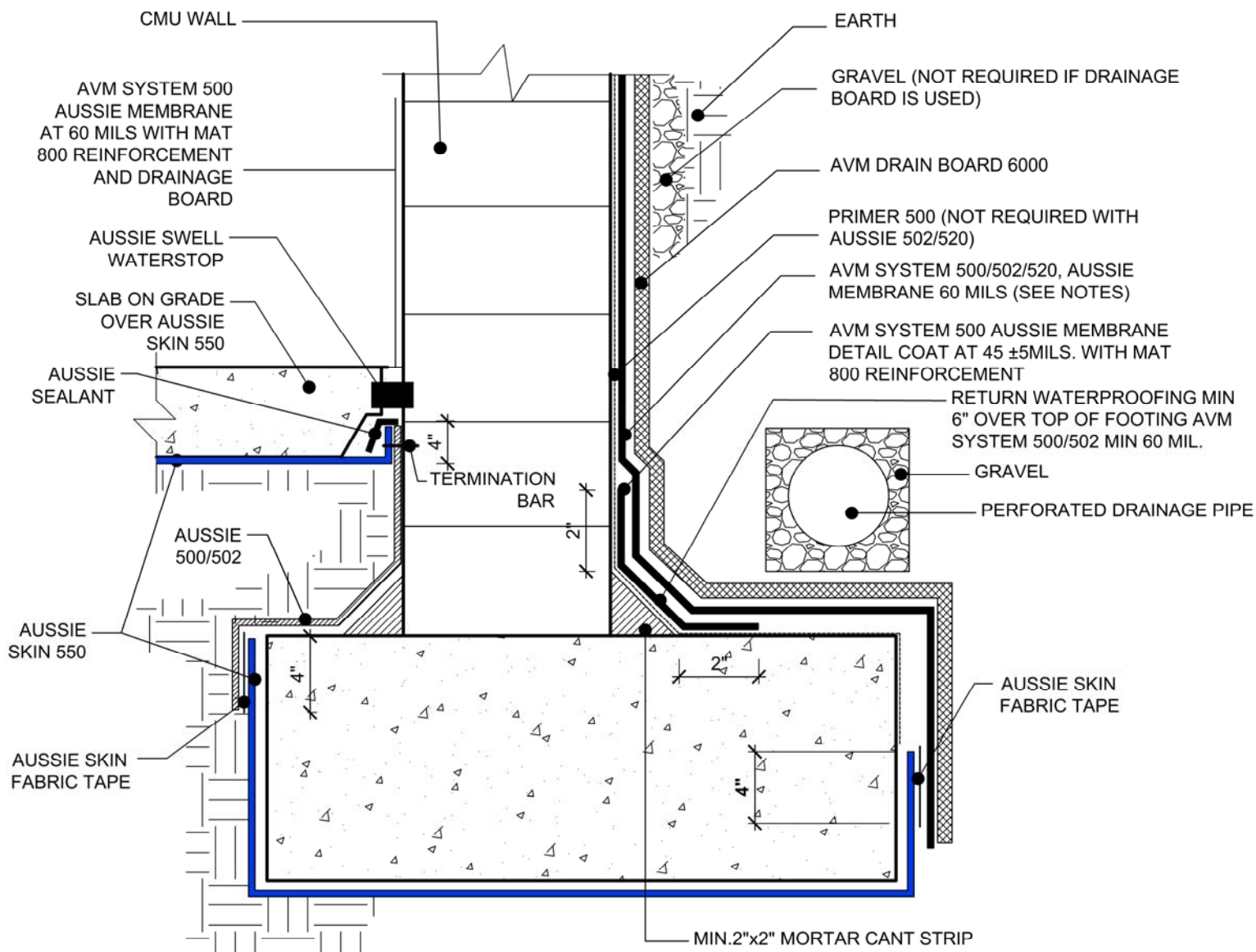
DETAIL #:

AVM-550-0010

AVM System 550

Aussie Skin 550

Elevated Slab over Aussie Skin, CMU (Block) Walls



NOTES:

1. Aussie Skin 550 is a Heavy, Duty, Easy to Install, Puncture Resistant Sheet Waterproofing Membrane with added technologies creating excellent adhesion between the membrane and wet Concrete or Shot-Crete.
2. For proper membrane thickness and appropriate protection and drainage, refer to AVM System 500/502/520 Min Thickness Table.
3. Contact AVM if no drain board or protection board is specified.

Below Water Table Installations

Below the water table, drain board may be substituted with approved protection layer.

AVM Industries, Inc.
8245 Remmet Ave, Canoga Park, CA 91304

Quality Waterproofing Products

888.414.1041 818.888.0050
www.avmindustries.com

FILE NAME: 0550-0010

Protected by Copyright - AVM Industries, Inc. Revision Date 3/10/2017

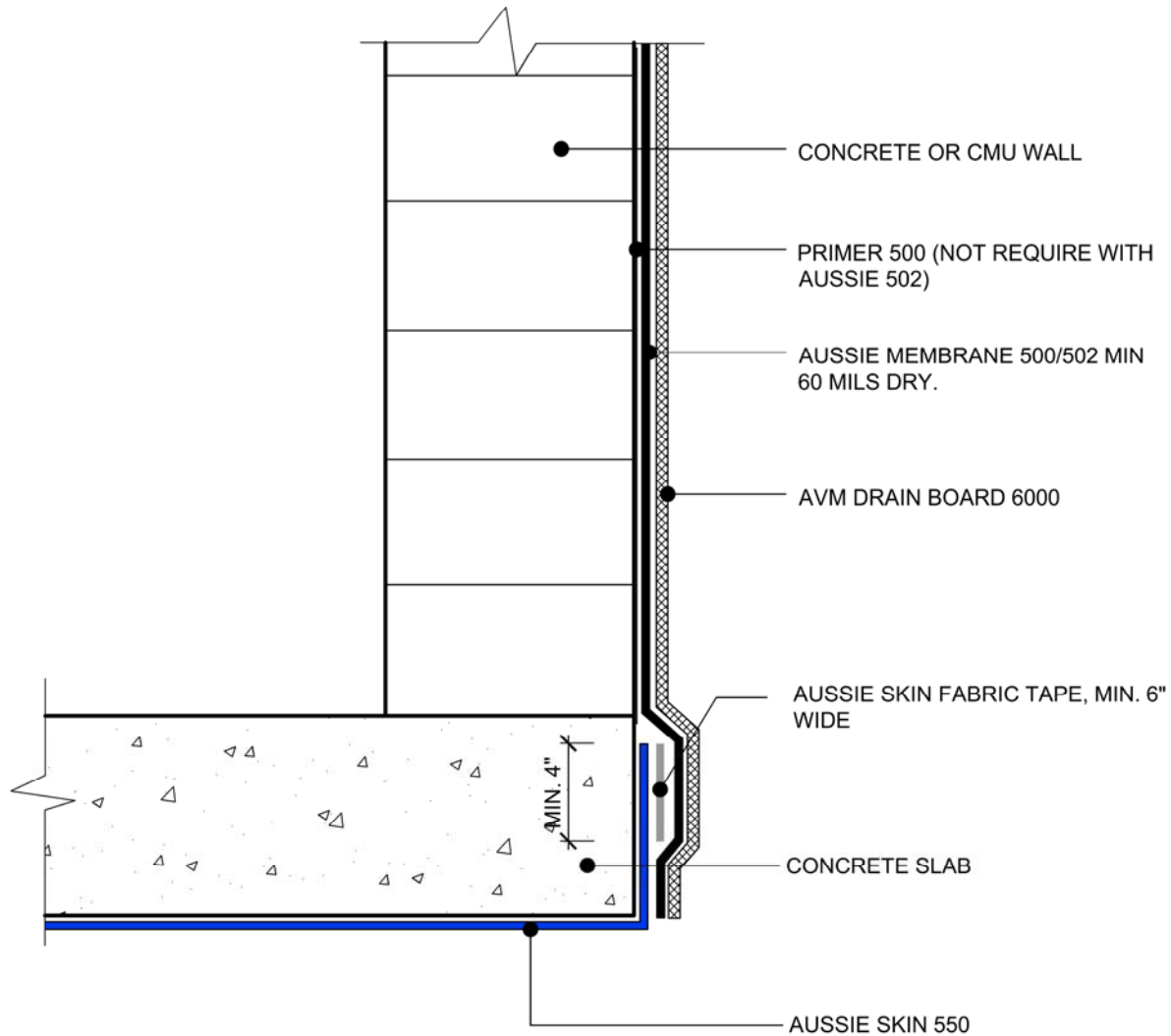
DETAIL #:

AVM-550-0012

AVM System 550

Aussie Skin 550

Aussie Membrane Installation over Aussie Skin.



NOTES:

1. Aussie Skin 550 is a Heavy, Duty, Easy to Install, Puncture Resistant Sheet Waterproofing Membrane with added technologies creating excellent adhesion between the membrane and wet Concrete or Shot-Crete.
2. For proper membrane thickness and appropriate protection and drainage, refer to AVM System 500/502 Min Thickness Table.
3. Contact AVM if no drain board or protection board is specified.
4. Below the water table, drain board may be substituted with approved protection layer.

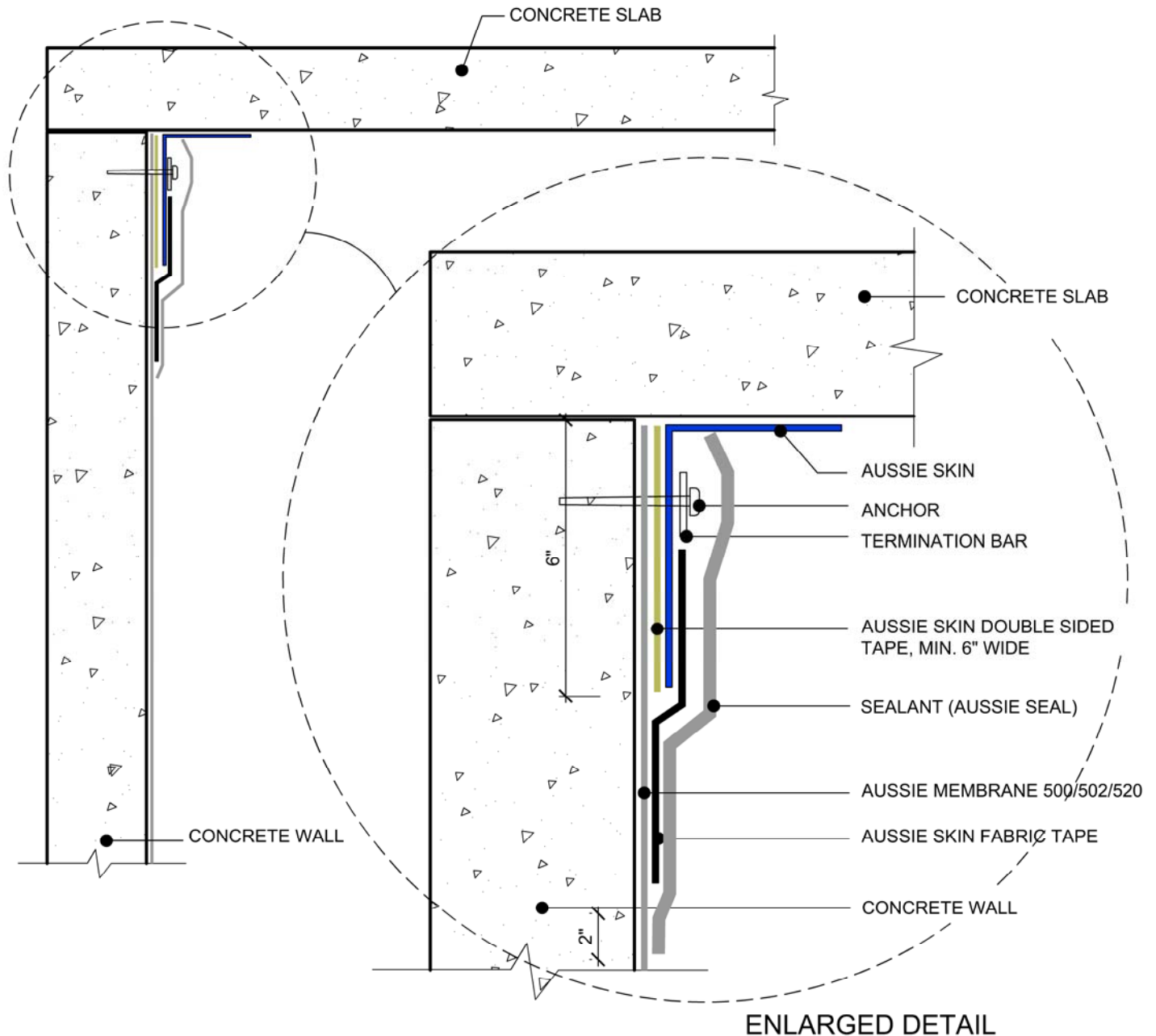
DETAIL #:

AVM-550-0014

AVM System 550

Aussie Skin 550

**Aussie Skin Installation over Aussie
Membrane 500/502/520.**



NOTES:

1. Aussie Skin 550 is a Heavy, Duty, Easy to Install, Puncture Resistant Sheet Waterproofing Membrane with added technologies creating excellent adhesion between the membrane and wet Concrete or Shot-Crete.
2. For proper membrane thickness and appropriate protection and drainage, refer to AVM System 500/502 Min Thickness Table.
3. Contact AVM if no drain board or protection board is specified.
4. Below the water table, drain board may be substituted with approved protection layer.

AVM Industries, Inc.
8245 Remmet Ave, Canoga Park, CA 91304

Quality Waterproofing Products

888.414.1041 818.888.0050
www.avmindustries.com

FILE NAME: 0550-0014

Protected by Copyright - AVM Industries, Inc. Revision Date 3/10/2017

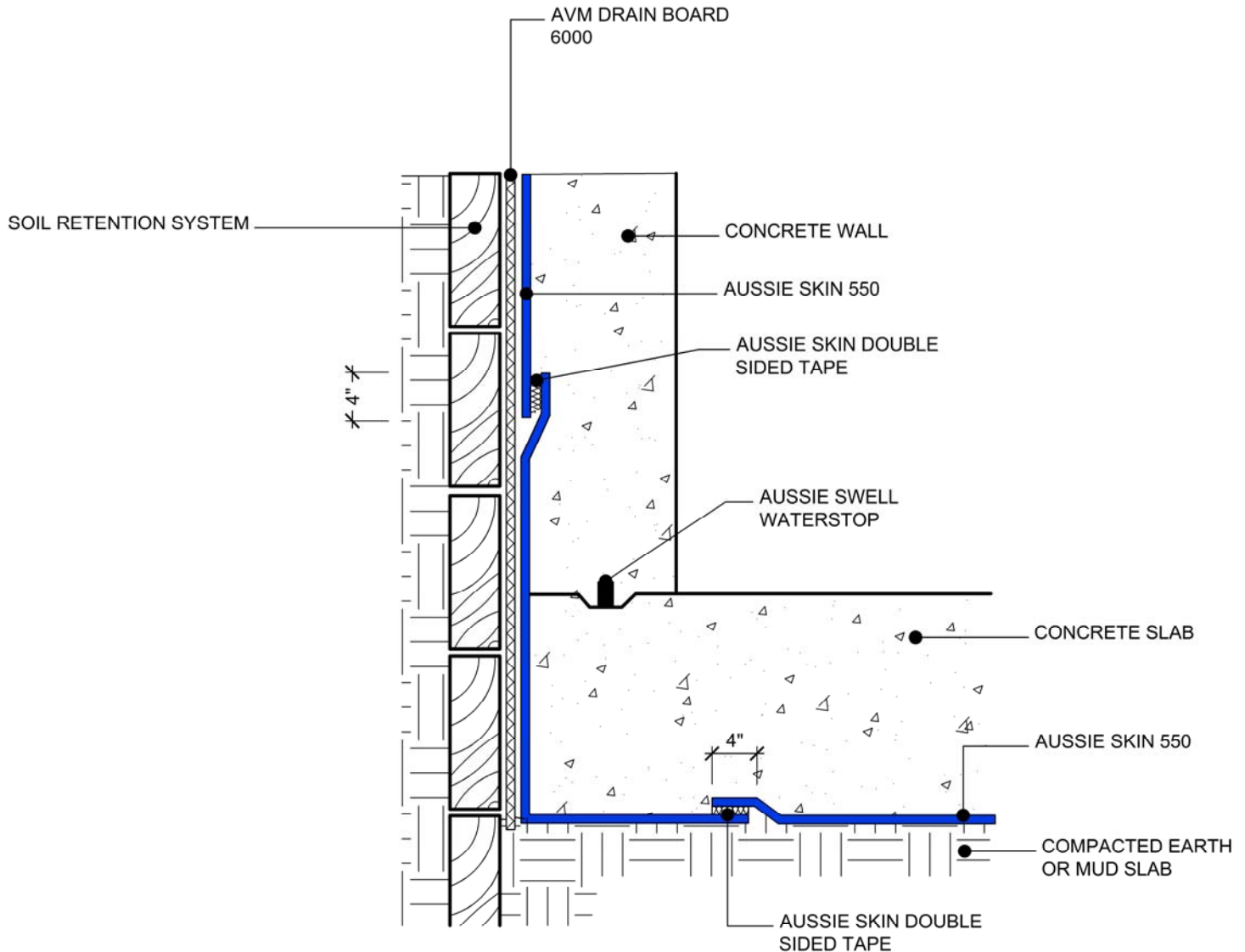
DETAIL #:

AVM-550-1510

AVM System 550

Aussie Skin 550

Blind Side Waterproofing over Lagging, Single System



NOTES:

1. Aussie Skin 550 is a Heavy, Duty, Easy to Install, Puncture Resistant Sheet Waterproofing Membrane with added technologies creating excellent adhesion between the membrane and wet Concrete or Shot-Crete.
2. Contact AVM if no drain board or protection board is specified.
3. All nails, screws etc used to hang the Aussie Skin above the water table must be non-rusting and sealed with AVM approved Sealant.

Below Water Table Installations

1. Below the water table, drain board may be substituted with approved protection layer
2. Not approved for shot-crete below the water table.

AVM Industries, Inc.
8245 Remmet Ave, Canoga Park, CA 91304

Quality Waterproofing Products

888.414.1041 818.888.0050
www.avmindustries.com

FILE NAME: 0550-1510

Protected by Copyright - AVM Industries, Inc. Revision Date 3/10/2017

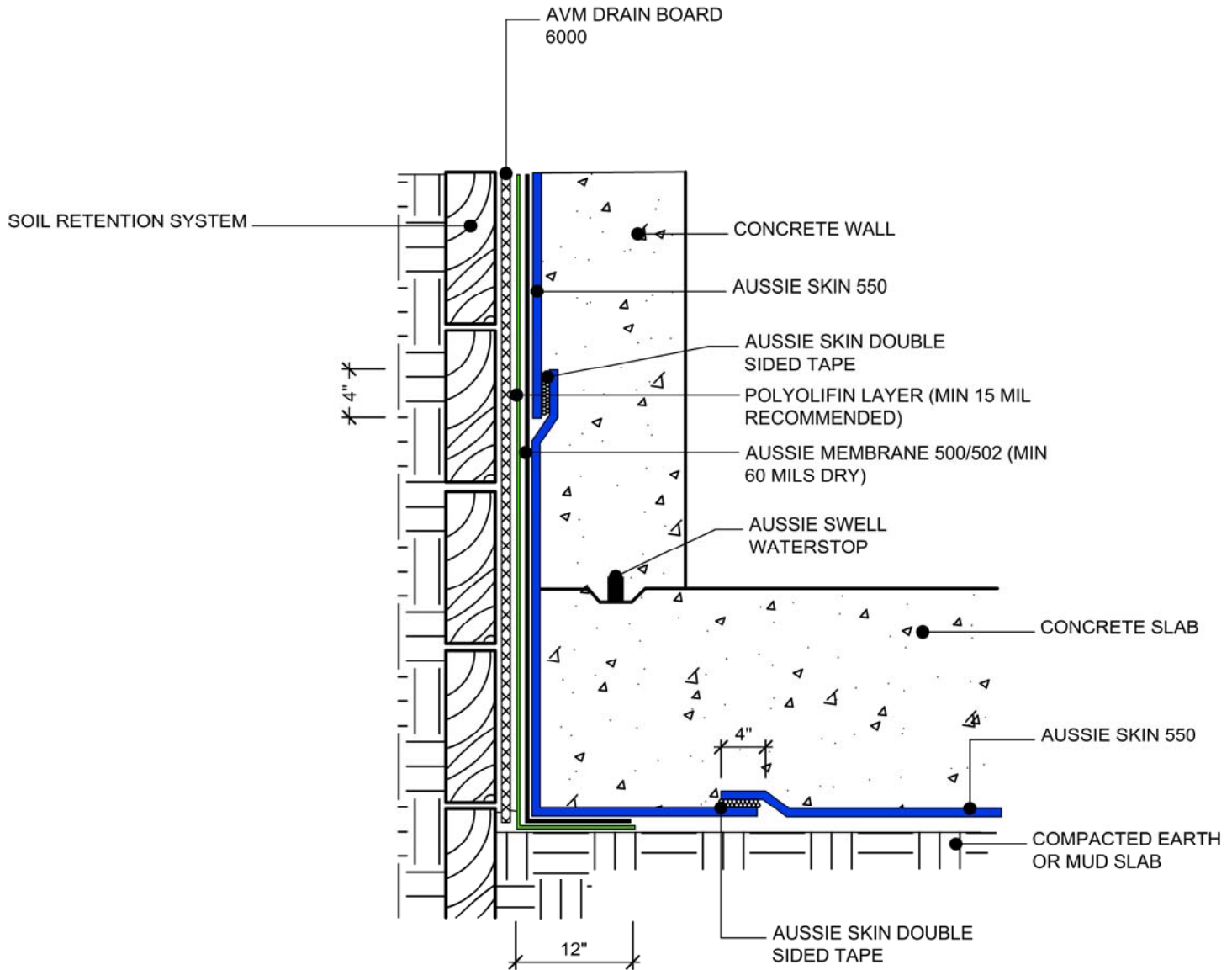
DETAIL #:

AVM-550-1520

AVM System 550

Aussie Skin 550

Blind Side Waterproofing over Lagging, Dual System (Below Water Table)



NOTES:

1. Aussie Skin 550 is a Heavy, Duty, Easy to Install, Puncture Resistant Sheet Waterproofing Membrane with added technologies creating excellent adhesion between the membrane and wet Concrete or Shot-Crete.
2. For proper membrane thickness and appropriate protection and drainage, refer to AVM System 500/502 Min Thickness Table.
3. Contact AVM if no drain board or protection board is specified.

Below Water Table Installations

1. All nails, screws etc used to hang the Aussie Skin below the water table must be non-rusting and sealed with a 3"x3" patch of Aussie Skin 550 bonded with Aussie tape.
2. Contact AVM for appropriate water stop system to be used.
3. Below the water table, drain board may be substituted with approved protection layer.

AVM Industries, Inc.
8245 Remmet Ave, Canoga Park, CA 91304

Quality Waterproofing Products

888.414.1041 818.888.0050
www.avmindustries.com

FILE NAME: 0550-1520

Protected by Copyright - AVM Industries, Inc. Revision Date 3/10/2017

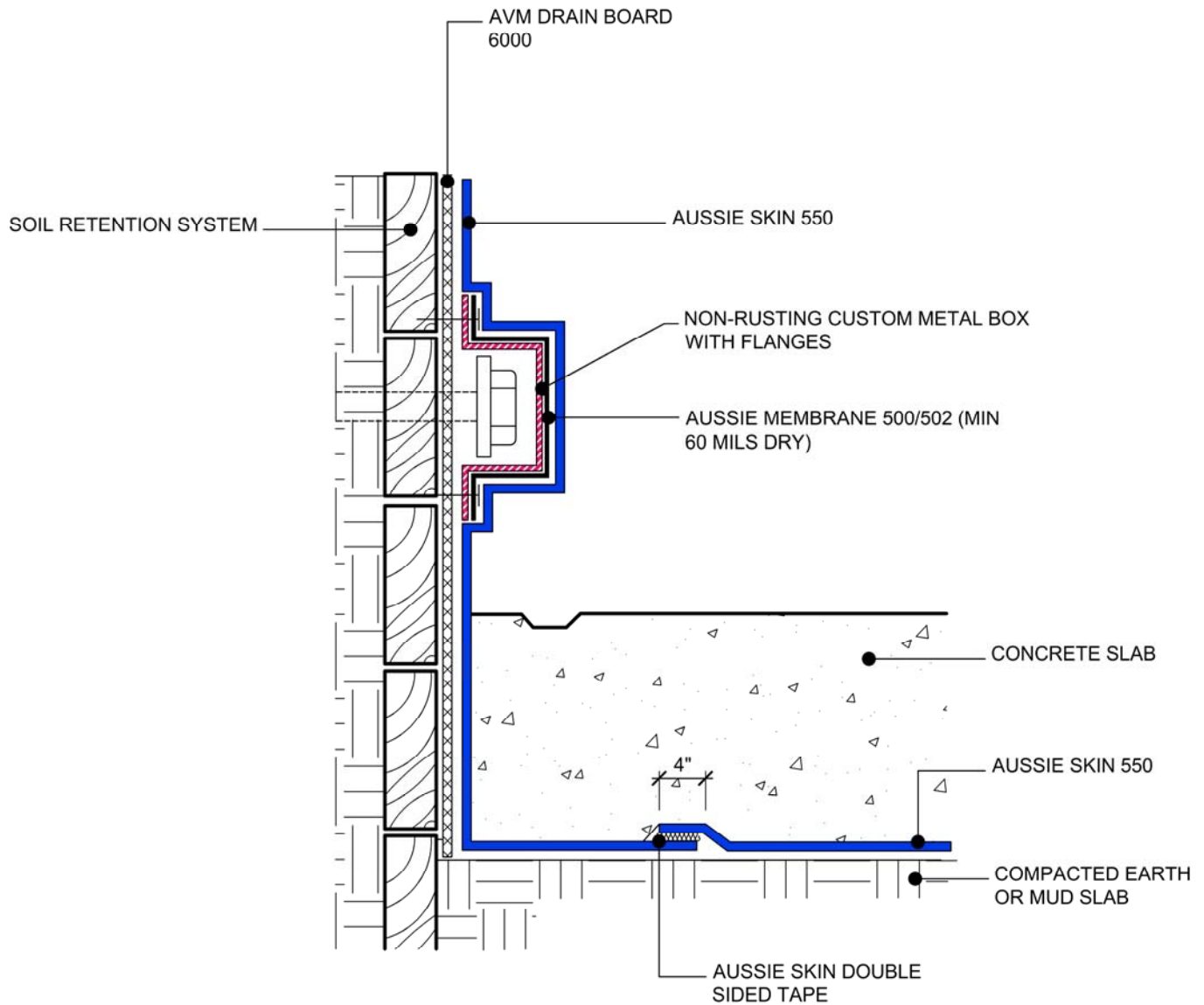
DETAIL #:

AVM-550-1530

AVM System 550

Aussie Skin 550

Tie-Back Detail Single Layer System



NOTES:

1. Aussie Skin 550 is a Heavy, Duty, Easy to Install, Puncture Resistant Sheet Waterproofing Membrane with added technologies creating excellent adhesion between the membrane and wet Concrete or Shot-Crete.
2. For proper membrane thickness and appropriate protection and drainage, refer to AVM System 500/502 Min Thickness Table.
3. Contact AVM if no drain board or protection board is specified.
4. All nails, screws etc used to hang the Aussie Skin above the water table must be non/rusting and sealed with Aussie Sealant.
5. Contractor is responsible to make the box of strong enough materials so it won't crush or significantly dent to ensure membrane's integrity.

Below Water Table Installations

Below the water table, drain board may be substituted with approved protection layer.

AVM Industries, Inc.
8245 Remmet Ave, Canoga Park, CA 91304

Quality Waterproofing Products

888.414.1041 818.888.0050
www.avmindustries.com

FILE NAME: 0550-1530

Protected by Copyright - AVM Industries, Inc. Revision Date 3/10/2017

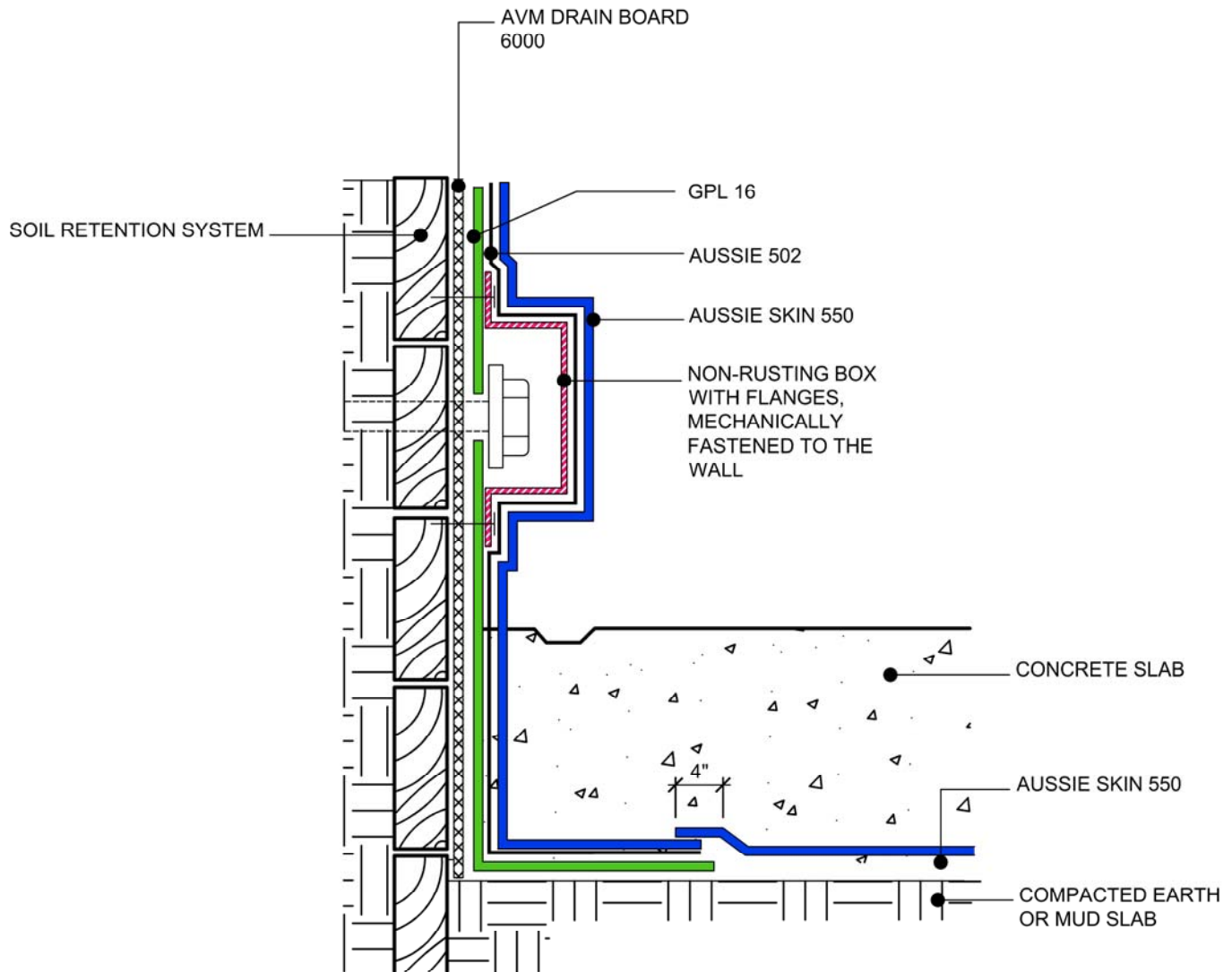
DETAIL #:

AVM-550-1534

AVM System 550

Aussie Skin 550

Tie-Back Detail Dual Layer System



NOTES:

1. Aussie Skin 550 is a Heavy, Duty, Easy to Install, Puncture Resistant Sheet Waterproofing Membrane with added technologies creating excellent adhesion between the membrane and wet Concrete or Shot-Crete.
2. For proper membrane thickness and appropriate protection and drainage, refer to AVM System 500/502 Min Thickness Table.
3. Contact AVM if no drain board or protection board is specified.
4. All nails, screws etc used to hang the Aussie Skin above the water table must be non/rusting and sealed with Aussie Sealant.

5. Contractor is responsible to make the box of strong enough materials so it won't crush or significantly dent to ensure membrane's integrity.

Below Water Table Installations

1. All nails, screws etc used to hang the Aussie Skin below the water table must be non-rusting and sealed with a 3"x3" patch of Aussie Skin 550 bonded with Aussie tape 550.
2. Below the water table, drain board may be substituted with approved protection layer.

AVM Industries, Inc.
8245 Remmet Ave, Canoga Park, CA 91304

Quality Waterproofing Products

888.414.1041 818.888.0050
www.avmindustries.com

FILE NAME: 0550-1534

Protected by Copyright - AVM Industries, Inc. Revision Date 3/10/2017

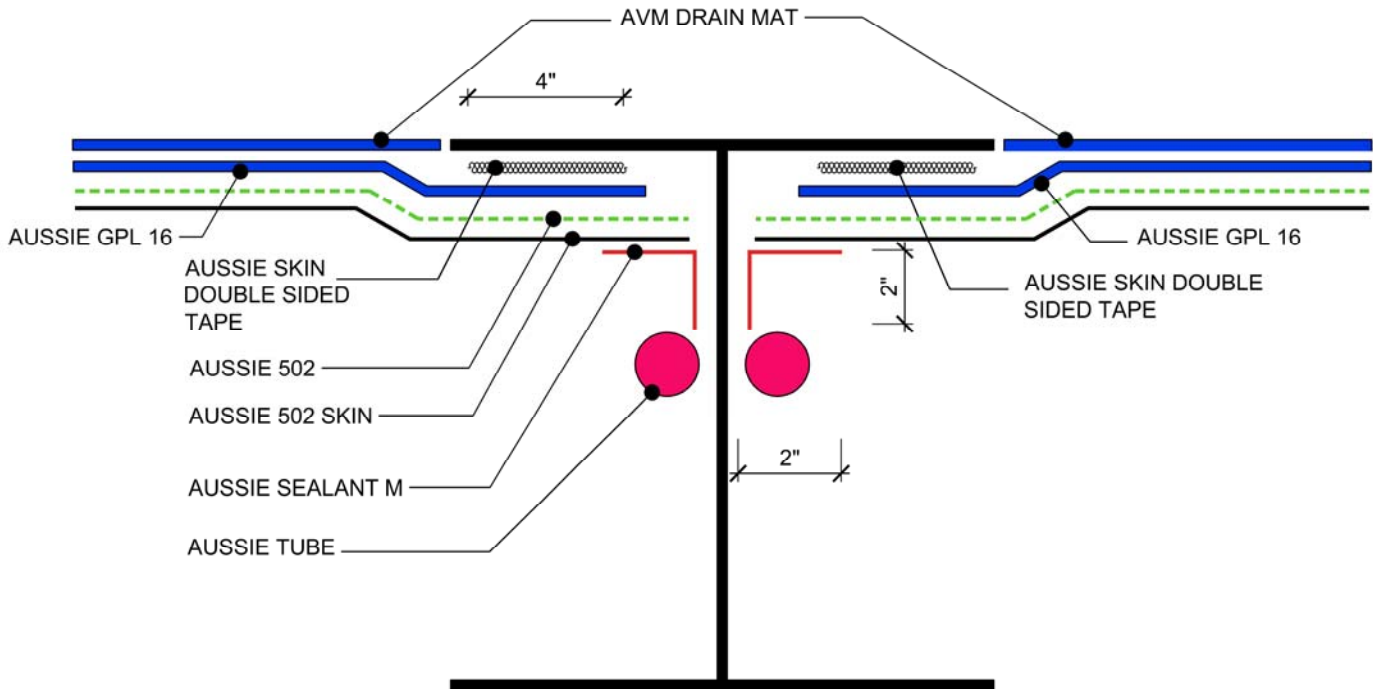
DETAIL #:

AVM-550-1544

AVM System 550

Aussie Skin 550

Back Lagged Detail Dual Layer System



NOTES:

1. Aussie Skin 550 is a Heavy, Duty, Easy to Install, Puncture Resistant Sheet Waterproofing Membrane with added technologies creating excellent adhesion between the membrane and wet Concrete or Shot-Crete.
2. Contact AVM if no drain board or protection board is specified.
3. All nails, screws etc used to hang the Aussie Skin above the water table must be non/rusting and sealed with Aussie Sealant.

Below Water Table Installations

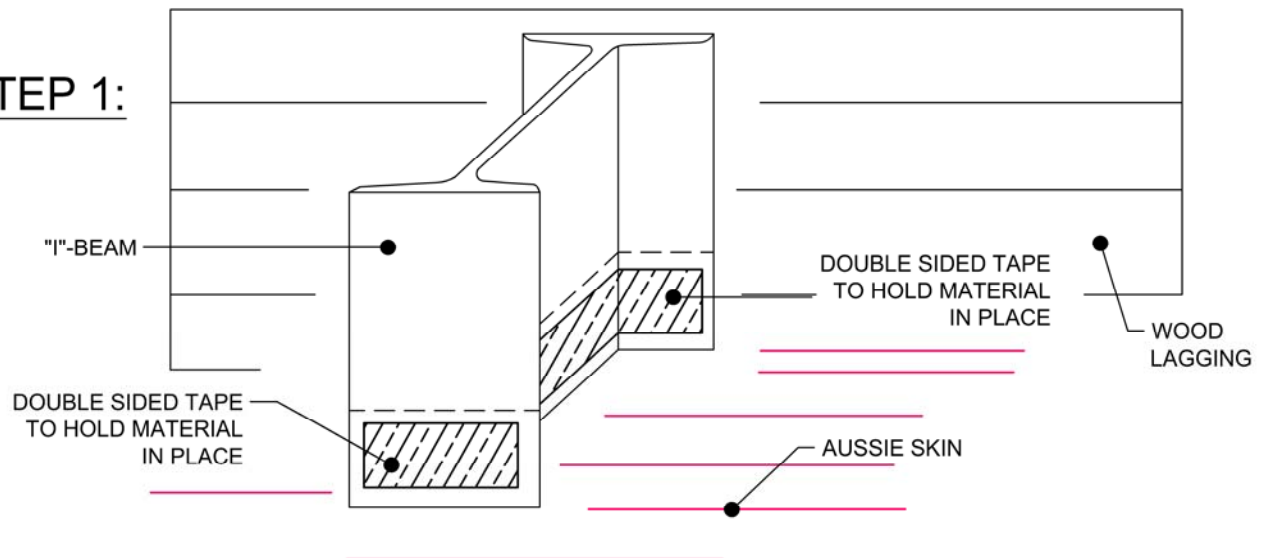
1. All nails, screws etc used to hang the Aussie Skin below the water table must be non-rusting and sealed with a 3"x3" patch of Aussie Skin 550 bonded with Aussie double sided tape 550.
2. Contact AVM for appropriate water stop system to be used.
3. Below the water table, drain board may be substituted with approved protection layer

DETAIL #:
AVM-550-1564
AVM System 550
Aussie Skin 550

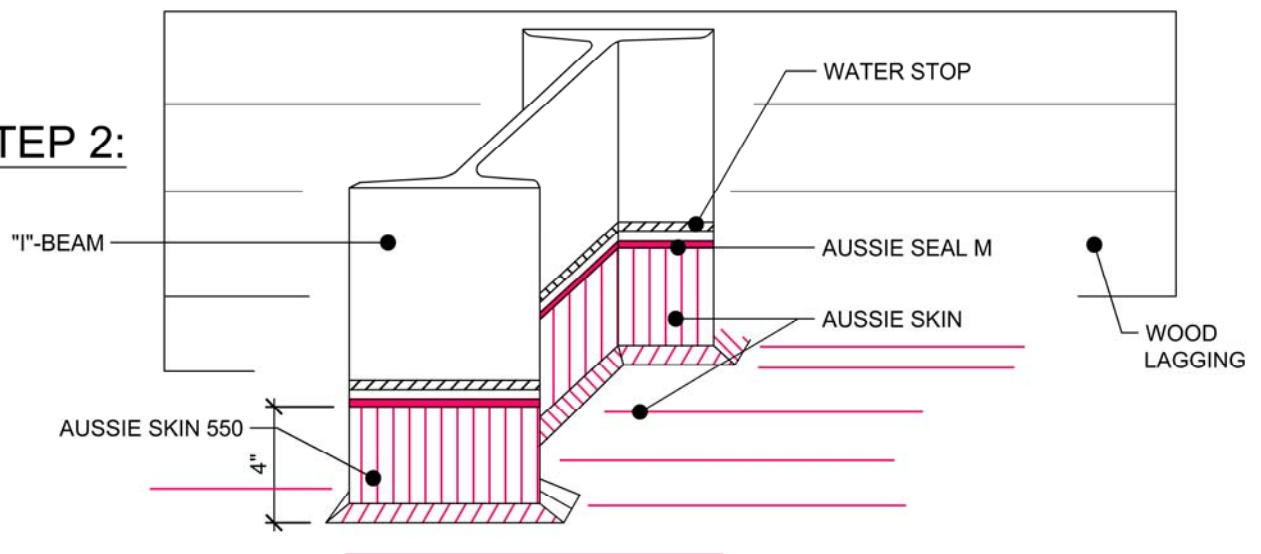
Base of "I" Beams or Base of Back
Lagged "I" Beams.



STEP 1:



STEP 2:



NOTES:

1. Aussie Skin 550 is a Heavy, Duty, Easy to Install, Puncture Resistant Sheet Waterproofing Membrane with added technologies creating excellent adhesion between the membrane and wet Concrete or Shot-Crete.
2. All surfaces must be clean and sound before installing the Lap Joints

Below Water Table Installations

101 For Aussie Skin installations below the water table, contact AVM to verify ALL details!

AVM Industries, Inc.
8245 Remmet Ave, Canoga Park, CA 91304

Quality Waterproofing Products

888.414.1041 818.888.0050
www.avmindustries.com

FILE NAME: 0550-1564

Protected by Copyright - AVM Industries, Inc. Revision Date 10/04/2017

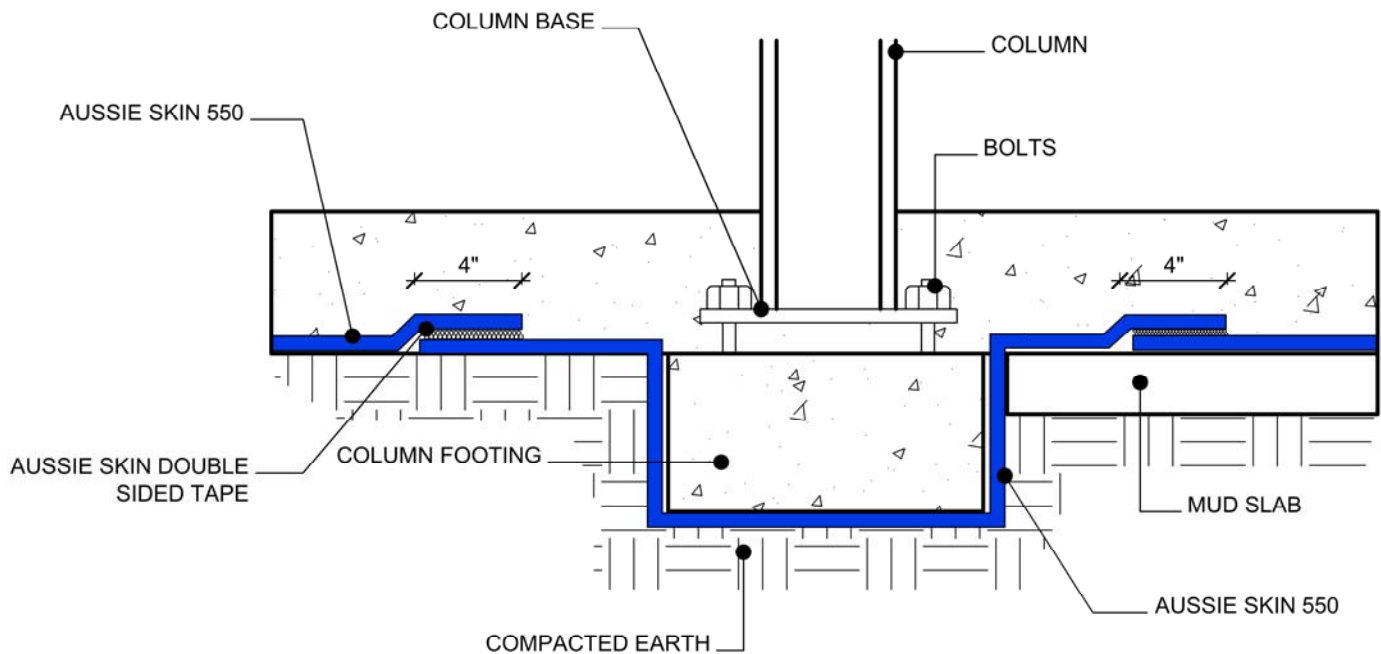
DETAIL #:

AVM-550-2500

AVM System 550

Aussie Skin 550

Grade Beam Detail: Aussie Skin Under Grade-Beam



NOTES:

1. Aussie Skin 550 is a Heavy, Duty, Easy to Install, Puncture Resistant Sheet Waterproofing Membrane with added technologies creating excellent adhesion between the membrane and wet Concrete or Shot-Crete.

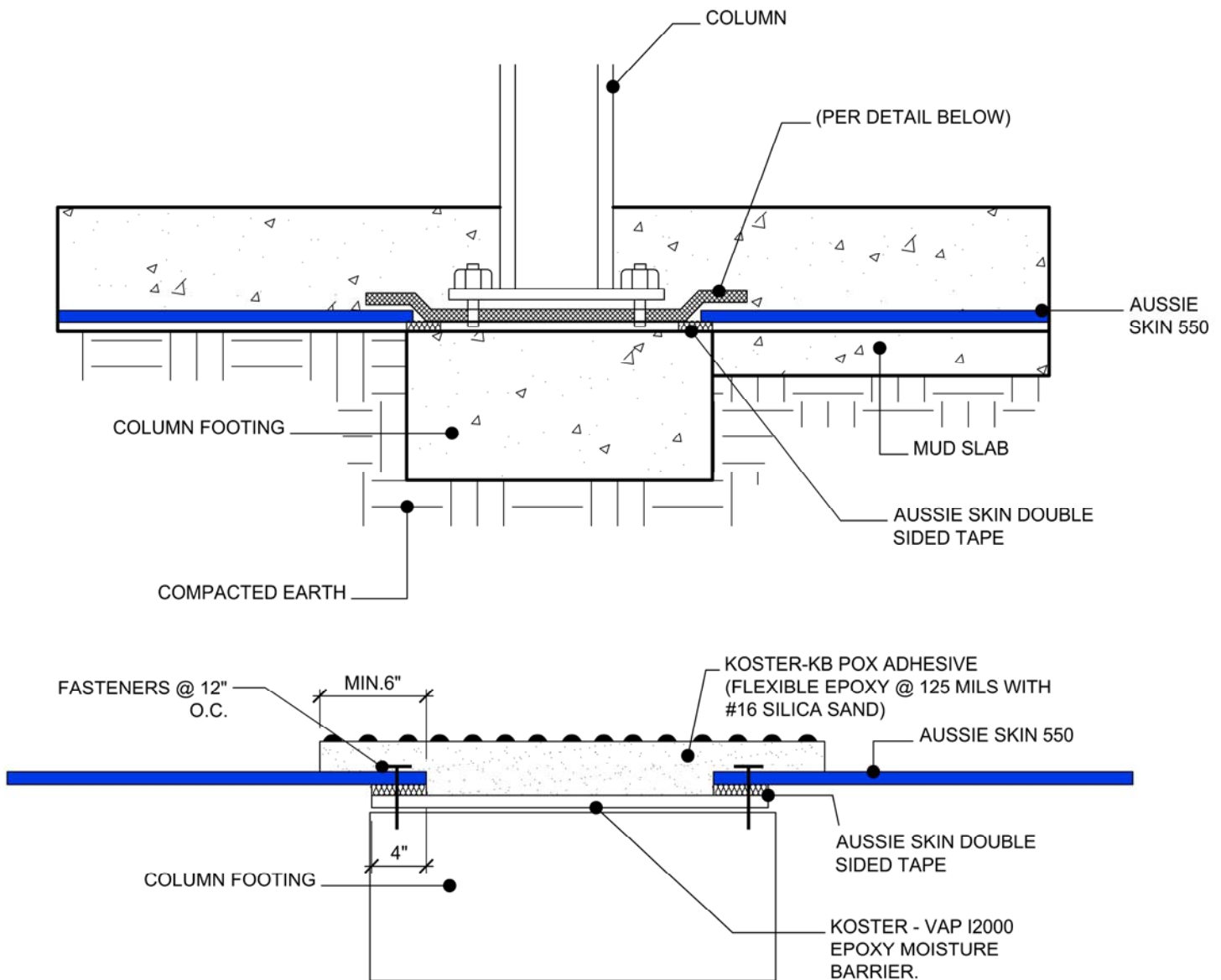
DETAIL #:

AVM-550-2540

AVM System 550

Aussie Skin 550

Grade Beam Detail: Aussie Skin Over
Grade-Beam - High Risk



NOTES:

1. Aussie Skin 550 is a Heavy, Duty, Easy to Install, Puncture Resistant Sheet Waterproofing Membrane with added technologies creating excellent adhesion between the membrane and wet Concrete or Shot-Crete.
2. Concrete must cure min 7 days.
3. Install Koster's products per their installation instructions.

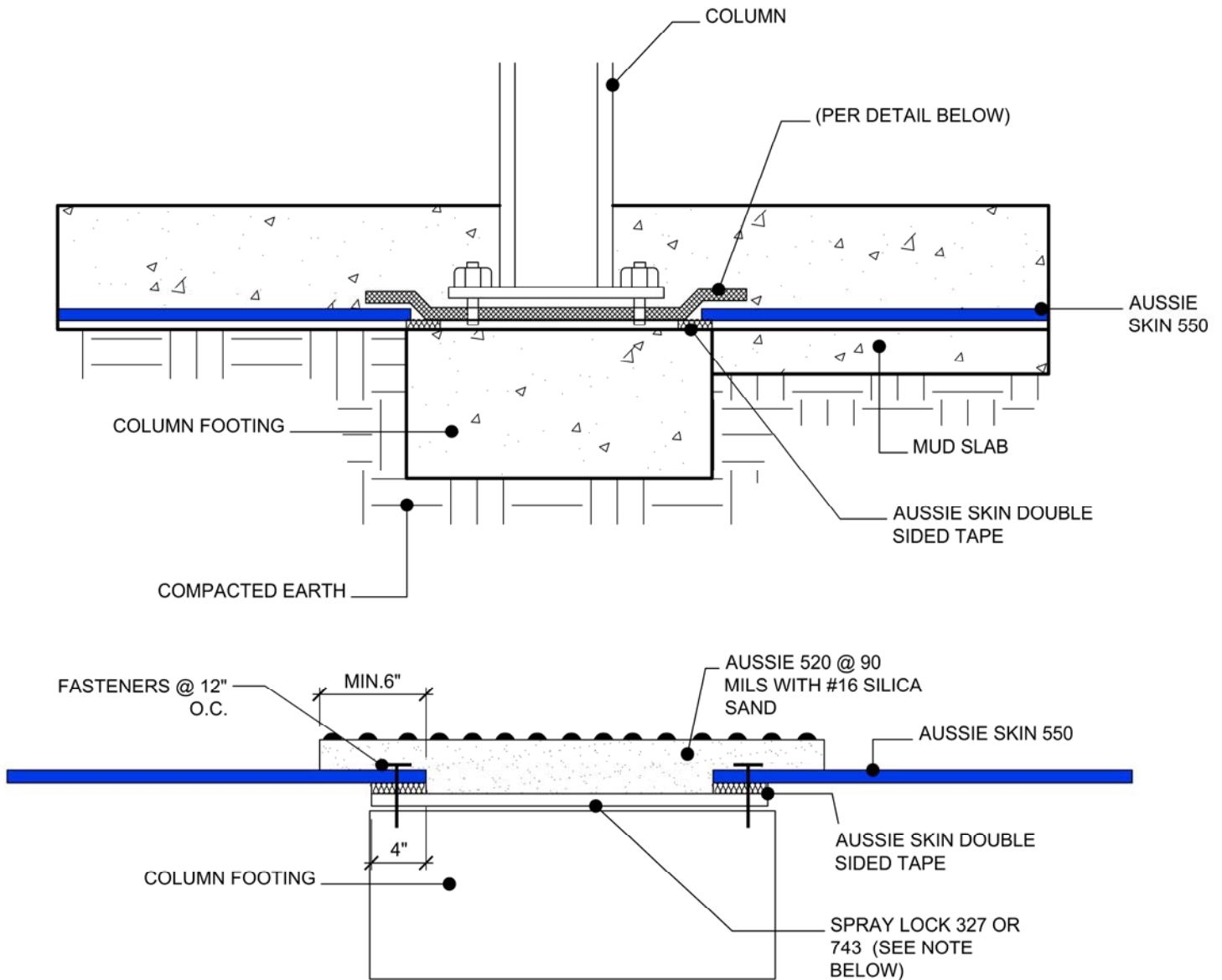
DETAIL #:

AVM-550-2550

AVM System 550

Aussie Skin 550

Grade Beam Detail: Aussie Skin Over
Grade-Beam - Moderate Risk - A



NOTES:

1. Aussie Skin 550 is a Heavy, Duty, Easy to Install, Puncture Resistant Sheet Waterproofing Membrane with added technologies creating excellent adhesion between the membrane and wet Concrete or Shot-Crete.
2. Use Spray-Lock 327 for Green Concrete or Spray-Lock 743 for Cured Concrete. Apply per Spray-Lock's Installation Instructions. See www.spraylock.com
3. Spraylock Moisture Barrier required if Aussie 520 fails to properly bond or bubble without it. Test to verify.

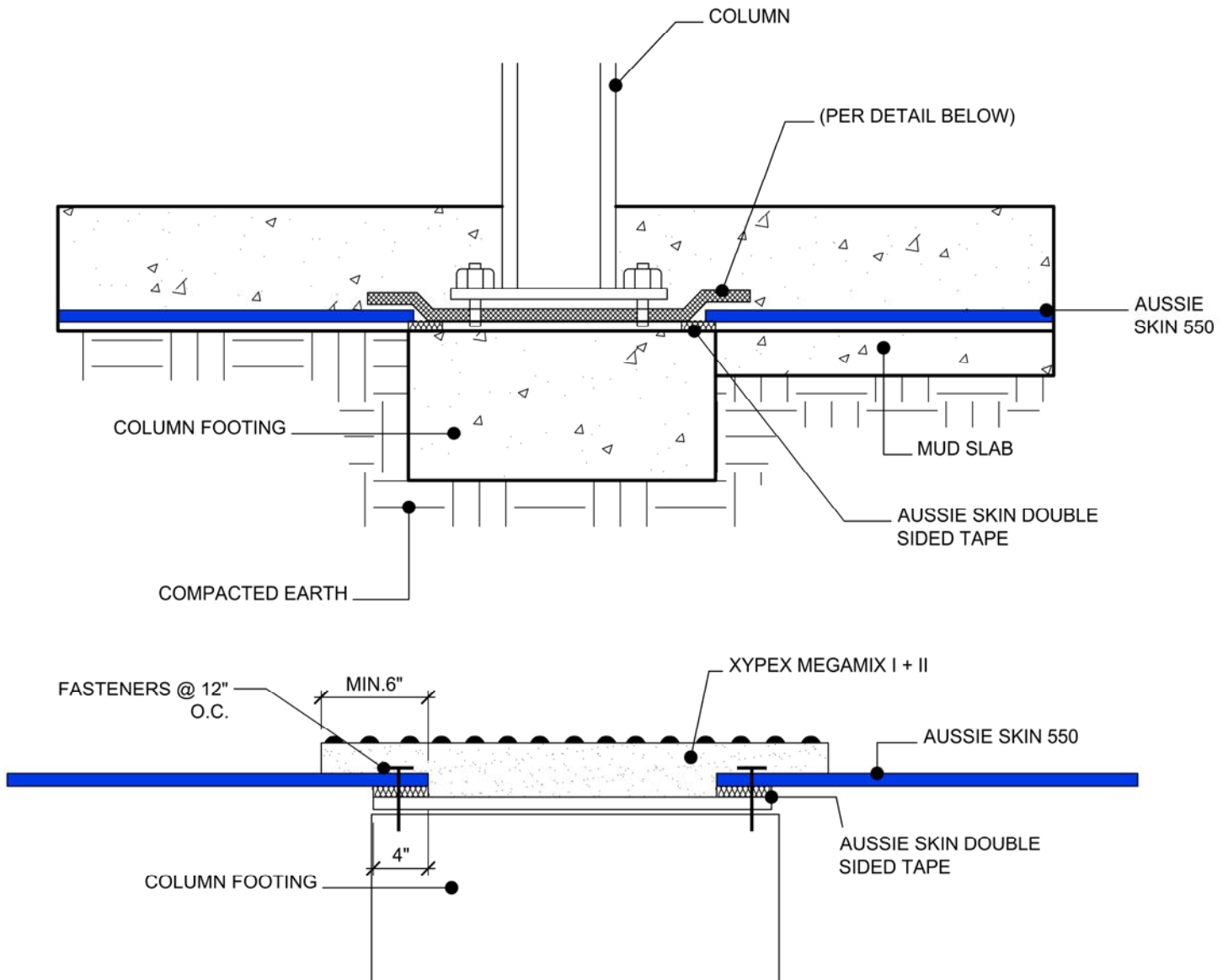
DETAIL #:

AVM-550-2560

AVM System 550

Aussie Skin 550

Grade Beam Detail: Aussie Skin Over
Grade-Beam - Moderate Risk - B



NOTES:

1. Aussie Skin 550 is a Heavy, Duty, Easy to Install, Puncture Resistant Sheet Waterproofing Membrane with added technologies creating excellent adhesion between the membrane and wet Concrete or Shot-Crete.
2. Install Zypex Megamix I+II after concrete has fully cured or 28 days.
3. Install Zypex Megamix I+II in accordance with their installation requirements.

Below Water Table Installations

101 For Aussie Skin installations below the water table, contact AVM to verify ALL details!

AVM Industries, Inc.
8245 Remmet Ave, Canoga Park, CA 91304

Quality Waterproofing Products

888.414.1041 818.888.0050
www.avmindustries.com

FILE NAME: 0550-2560

Protected by Copyright - AVM Industries, Inc. Revision Date 3/10/2017

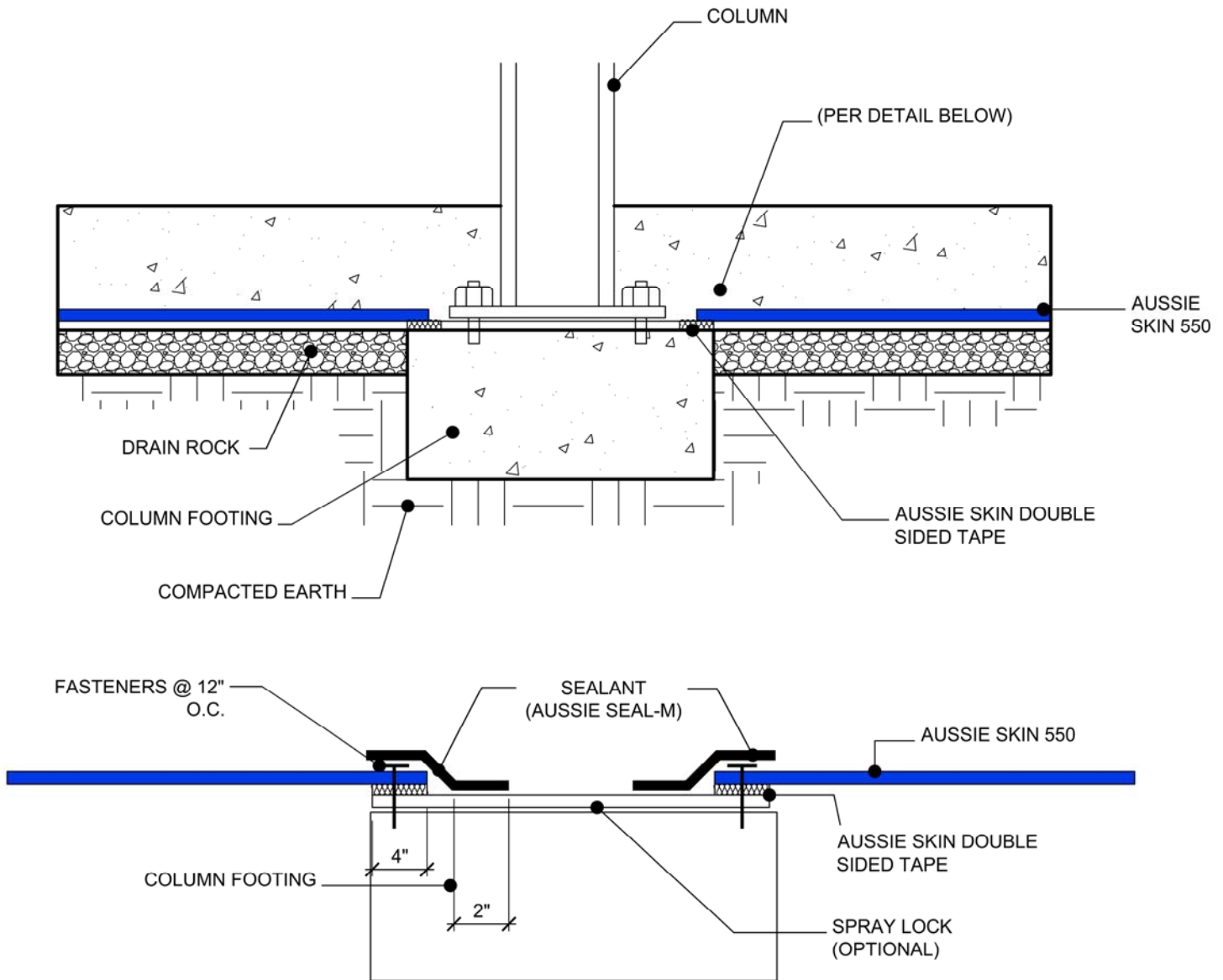
DETAIL #:

AVM-550-2570

AVM System 550

Aussie Skin 550

Grade Beam Detail: Aussie Skin Over
Grade-Beam - Low Risk / Non Water
Table



NOTES:

1. Aussie Skin 550 is a Heavy, Duty, Easy to Install, Puncture Resistant Sheet Waterproofing Membrane with added technologies creating excellent adhesion between the membrane and wet Concrete or Shot-Crete.
2. Use Spray-Lock 327 for Green Concrete or Spray-Lock 743 for Cured Concrete. Apply per Spray-Lock's Installation Instructions.

Below Water Table Installations

101 For Aussie Skin installations below the water table, contact AVM to verify ALL details!

AVM Industries, Inc.
8245 Remmet Ave, Canoga Park, CA 91304

Quality Waterproofing Products

888.414.1041 818.888.0050
www.avmindustries.com

FILE NAME: 0550-2570

Protected by Copyright - AVM Industries, Inc. Revision Date 3/10/2017

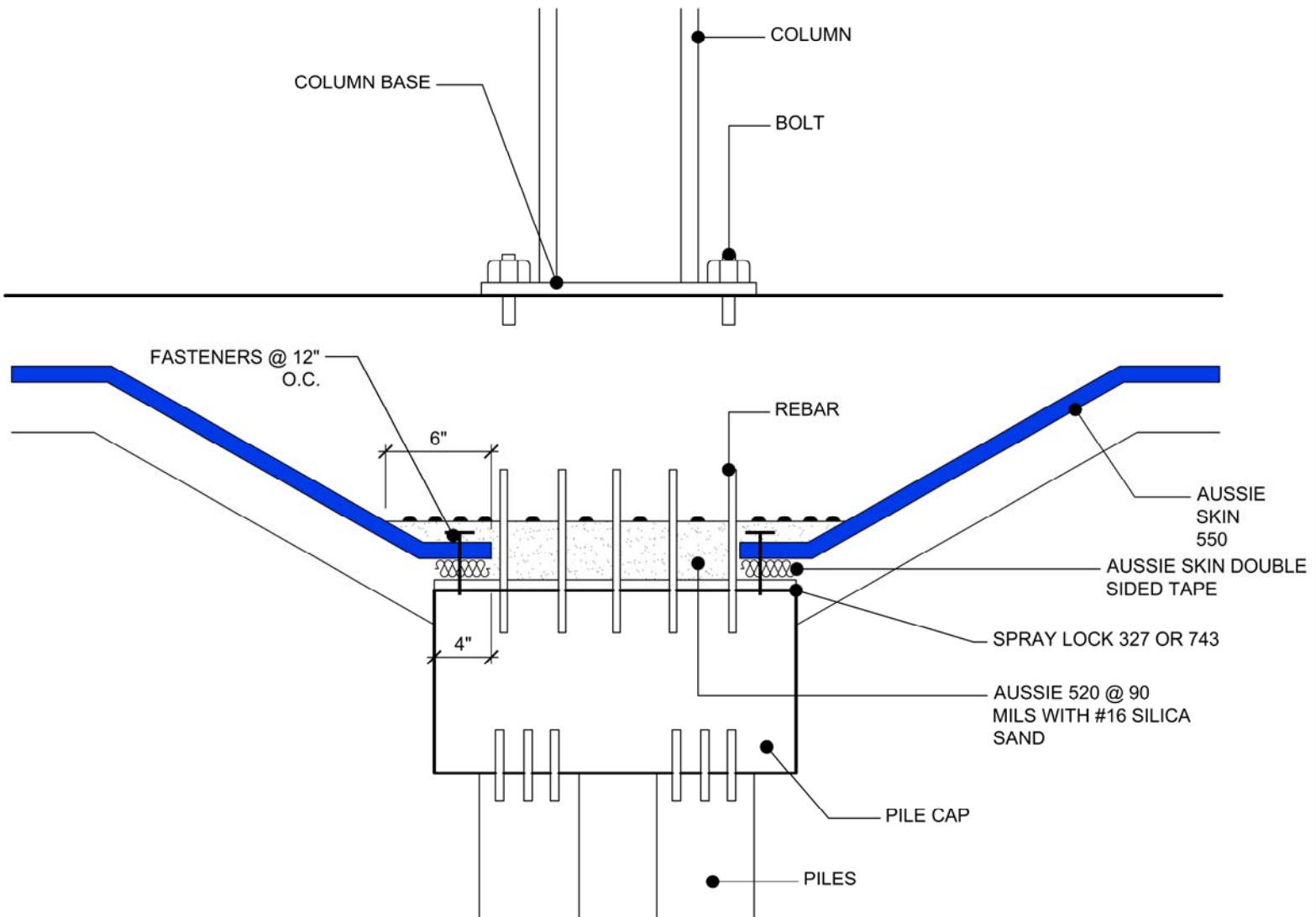
DETAIL #:

AVM-550-2610

AVM System 550

Aussie Skin 550

Pile Cap Detail - Moderate Risk



NOTES:

1. Aussie Skin 550 is a Heavy, Duty, Easy to Install, Puncture Resistant Sheet Waterproofing Membrane with added technologies creating excellent adhesion between the membrane and wet Concrete or Shot-Crete.
2. Concrete Surface must be free of dirt, debris, release agents and anything else that might inhibit bonding.
3. Concrete surface must be structurally sound, uniform and finished with a light broom finish.
4. Use Spray-Lock 327 for Green Concrete or Spray-Lock 743 for Cured Concrete. Apply per Spray-Lock's Installation Instructions.
5. Spraylock Moisture Barrier required if Aussie 520 fails to properly bond or bubble without it. Test to verify.

Below Water Table Installations

101 For Aussie Skin installations below the water table, contact AVM to verify ALL details!

AVM Industries, Inc.
8245 Remmet Ave, Canoga Park, CA 91304

Quality Waterproofing Products

888.414.1041 818.888.0050
www.avmindustries.com

FILE NAME: 0550-2610

Protected by Copyright - AVM Industries, Inc. Revision Date 3/10/2017

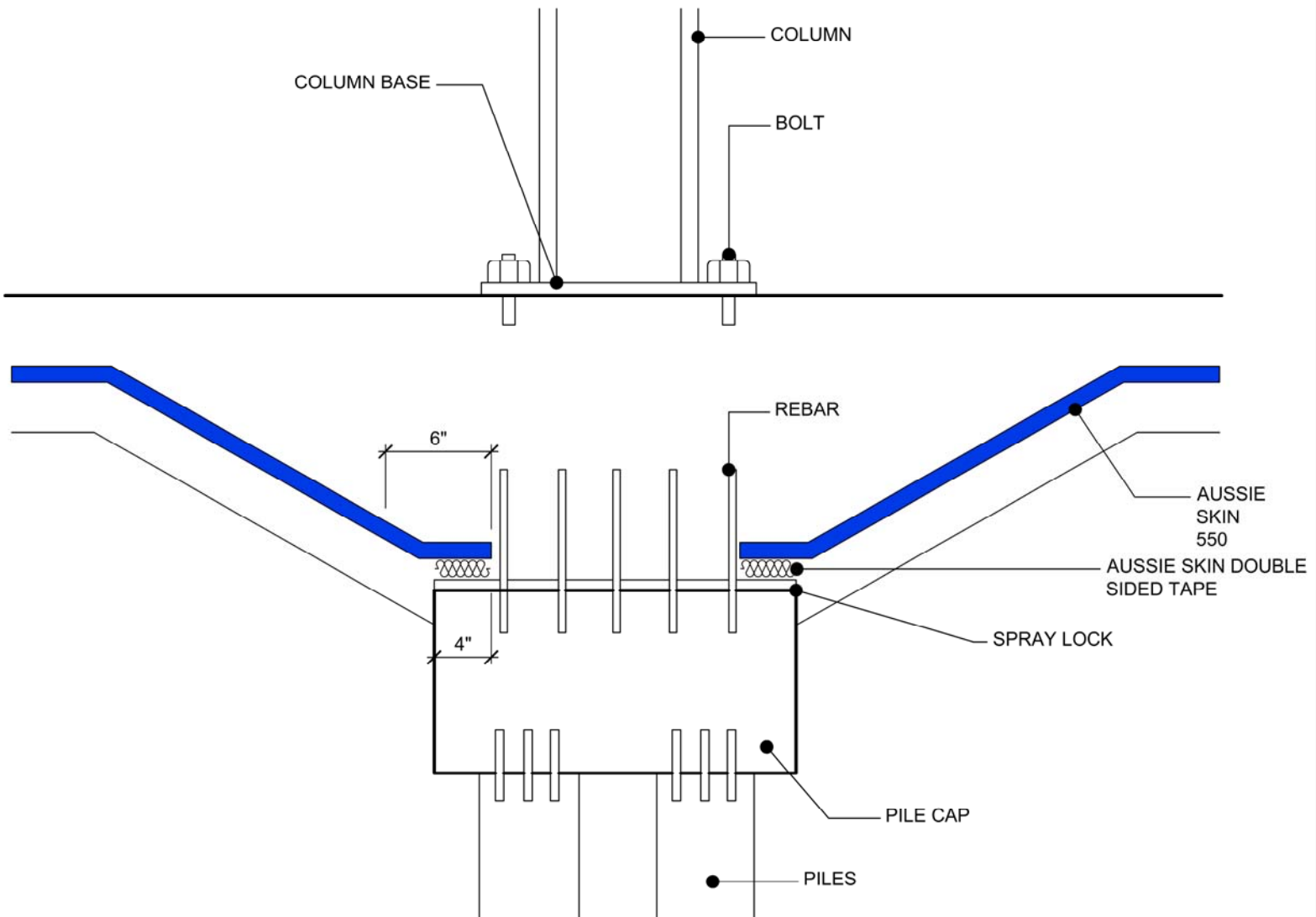
DETAIL #:

AVM-550-2630

AVM System 550

Aussie Skin 550

Pile Cap Detail - Low Risk



NOTES:

1. Aussie Skin 550 is a Heavy, Duty, Easy to Install, Puncture Resistant Sheet Waterproofing Membrane with added technologies creating excellent adhesion between the membrane and wet Concrete or Shot-Crete.
2. Concrete Surface must be free of dirt, debris, release agents and anything else that might inhibit bonding.
3. Concrete surface must be structurally sound, uniform and finished with a light broom finish.
4. Use Spray-Lock 327 for Green Concrete or Spray-Lock 743 for Cured Concrete. Apply per Spray-Lock's Installation Instructions.

Below Water Table Installations

101 For Aussie Skin installations below the water table, contact AVM to verify ALL details!

AVM Industries, Inc.
8245 Remmet Ave, Canoga Park, CA 91304

Quality Waterproofing Products

888.414.1041 818.888.0050
www.avmindustries.com

FILE NAME: 0550-2630

Protected by Copyright - AVM Industries, Inc. Revision Date 3/10/2017

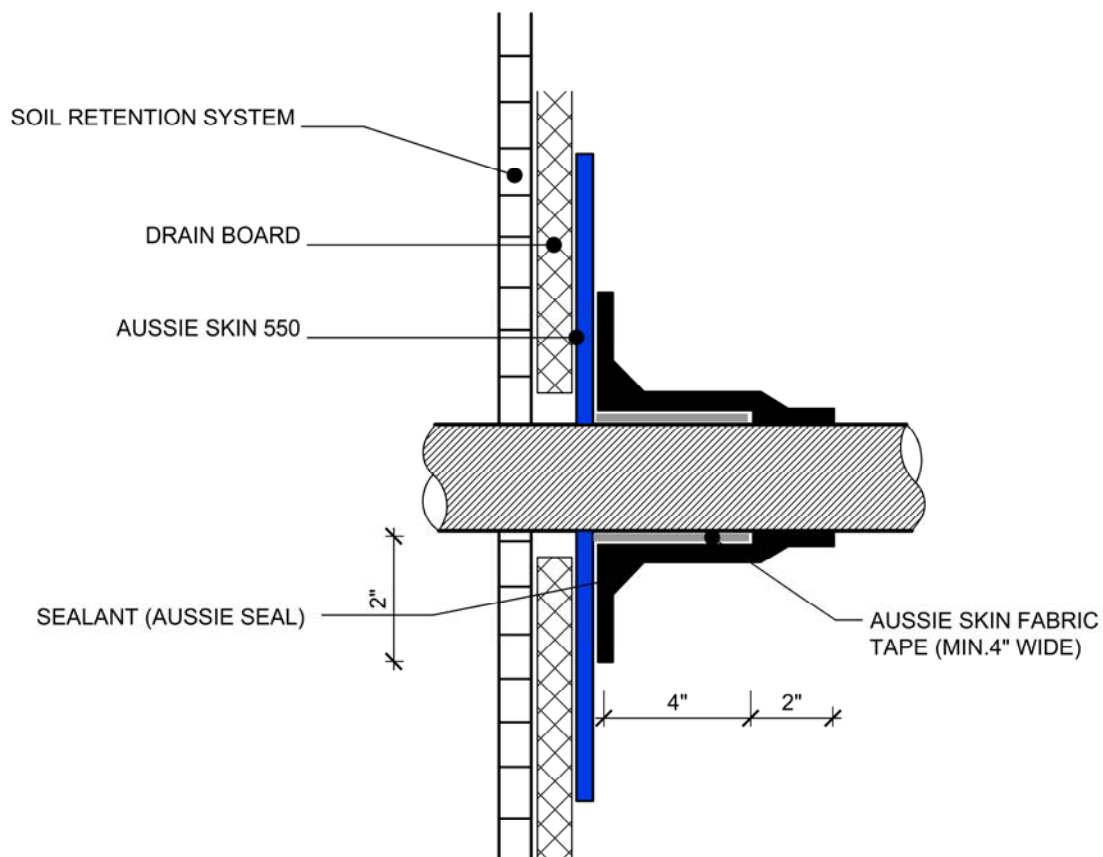
DETAIL #:

AVM-550-4000

AVM System 550

Aussie Skin 550

Through Wall Penetration,
Sealant on Sanded Side.



NOTES:

1. Aussie Skin 550 is a Heavy, Duty, Easy to Install, Puncture Resistant Sheet Waterproofing Membrane with added technologies creating excellent adhesion between the membrane and wet Concrete or Shot-Crete.
2. Aussie Skin Fabric Tape must be used as specified (ie, min 4" wide)

Below Water Table Installations

Below the water table, drain board may be substituted with approved protection layer

AVM Industries, Inc.
8245 Remmet Ave, Canoga Park, CA 91304

Quality Waterproofing Products

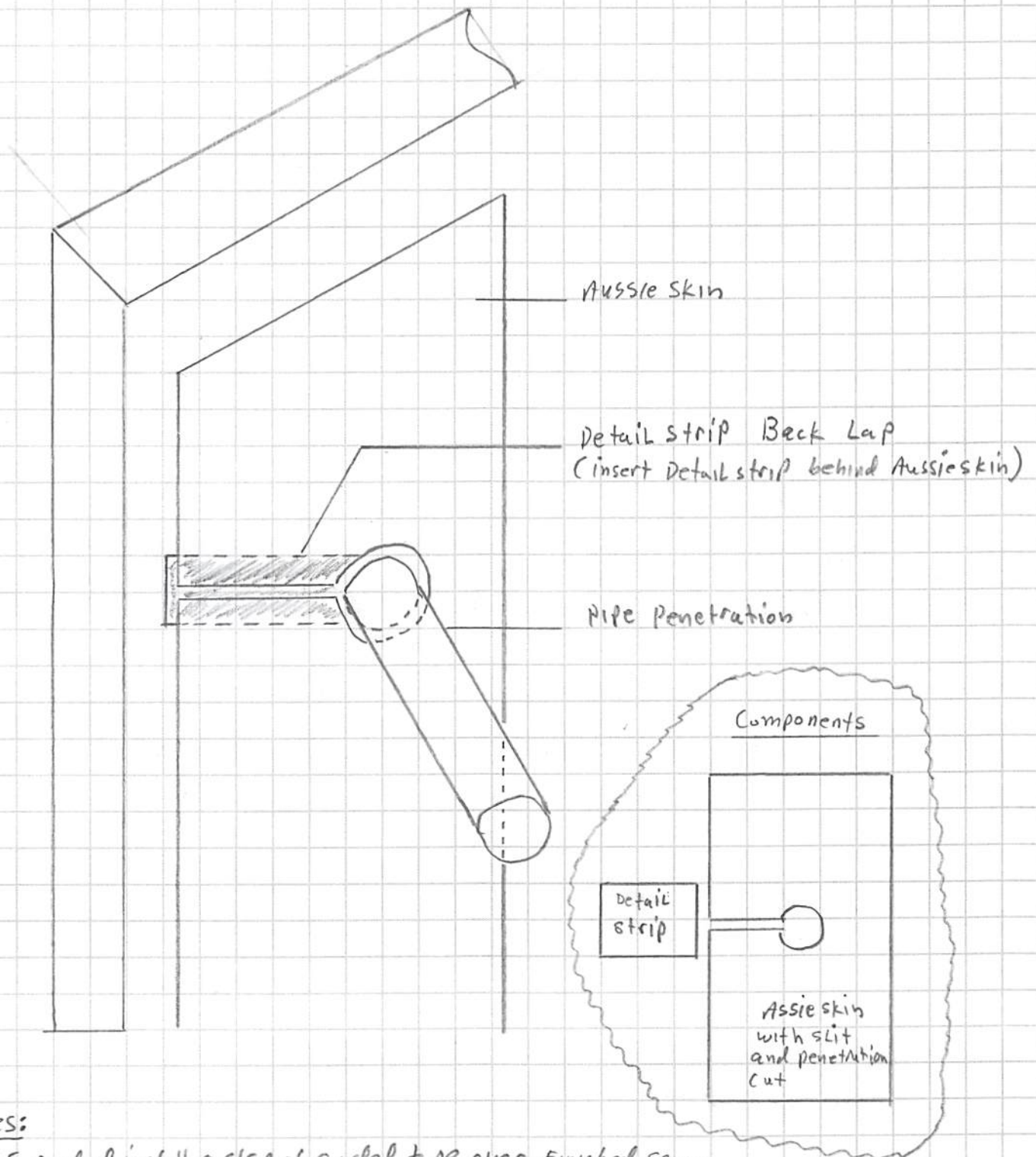
888.414.1041 818.888.0050
www.avmindustries.com

FILE NAME: 0550-4000

Protected by Copyright - AVM Industries, Inc. Revision Date 3/10/2017

AVM Detail # AVM-550-4002

Aussie Skin pipe penetration
Detail Assembly w Detail strip

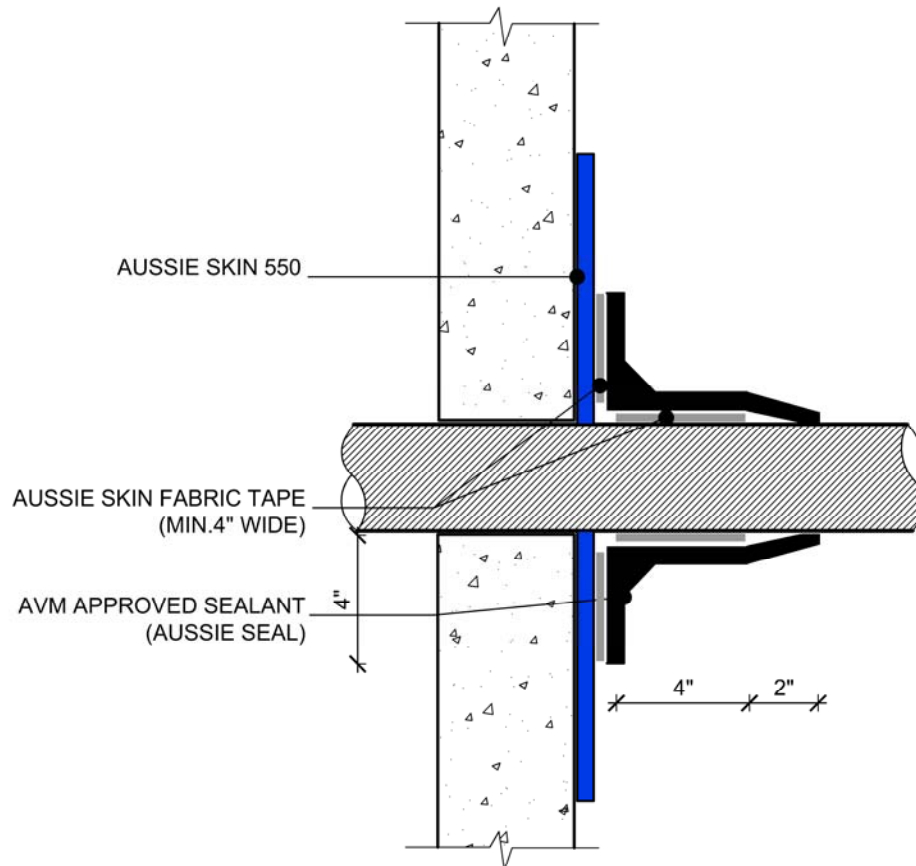


notes:

1. IF needed, install a strip of sanded tape over Finished seam
(only IF gap at seam is over $\frac{1}{2}$ " wide)
2. complete pipe penetration installation with Aussie seal sealant as shown on detail number AVM-550-4000

DETAIL #:
AVM-550-4010
AVM System 550
Aussie Skin 550

Through Wall Penetration Sealant on HDPE Side



NOTES:

1. Aussie Skin 550 is a Heavy, Duty, Easy to Install, Puncture Resistant Sheet Waterproofing Membrane with added technologies creating excellent adhesion between the membrane and wet Concrete or Shot-Crete.
2. Aussie Skin Fabric Tape must be used as specified (ie, min 4" wide)

Below Water Table Installations

Below the water table, drain board may be substituted with approved protection layer

AVM Industries, Inc.
8245 Remmet Ave, Canoga Park, CA 91304

Quality Waterproofing Products

888.414.1041 818.888.0050
www.avmindustries.com

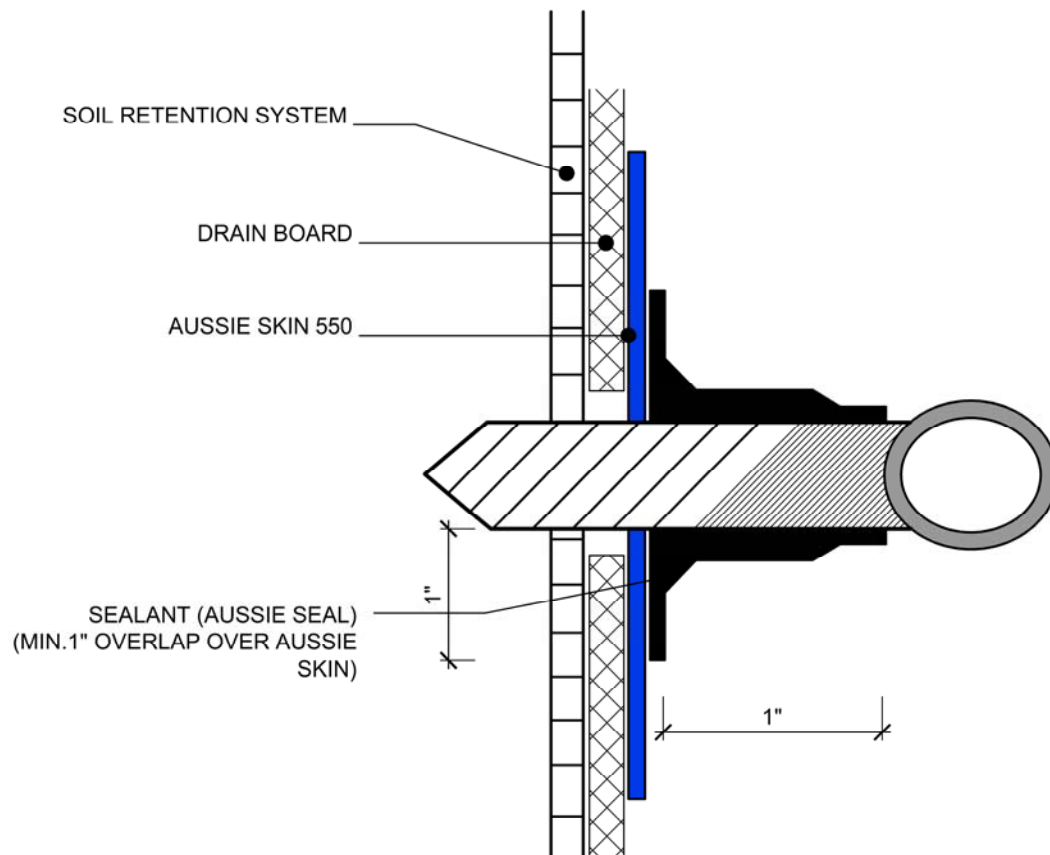
FILE NAME: 0550-4010

Protected by Copyright - AVM Industries, Inc. Revision Date 3/10/2017

DETAIL #:
AVM-550-4100

AVM System 550
Aussie Skin 550

Rebar Tie
Single Layer System



NOTES:

1. Aussie Skin 550 is a Heavy, Duty, Easy to Install, Puncture Resistant Sheet Waterproofing Membrane with added technologies creating excellent adhesion between the membrane and wet Concrete or Shot-Crete.

Below Water Table Installations

Below the water table, drain board may be substituted with approved protection layer

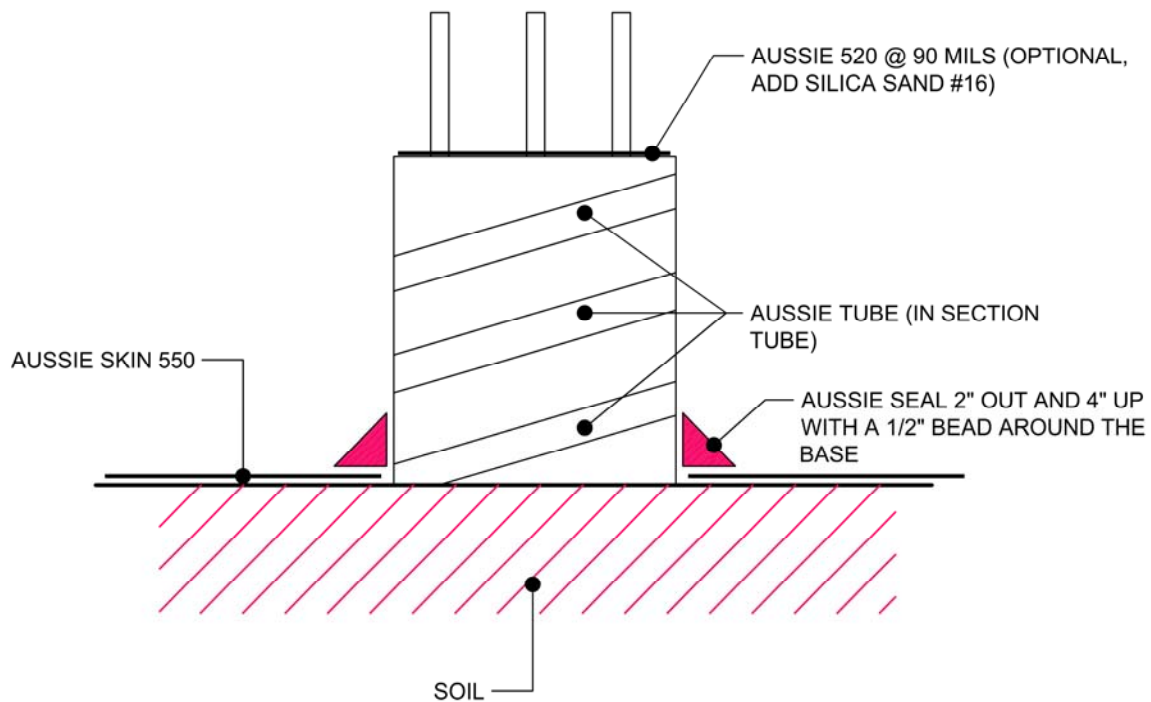
DETAIL #:

AVM-550-5201

AVM System 550

Aussie Skin 550

Corrugated Pile Detail



NOTES:

1. Aussie Skin 550 is a Heavy, Duty, Easy to Install, Puncture Resistant Sheet Waterproofing Membrane with added technologies creating excellent adhesion between the membrane and wet Concrete or Shot-Crete.
2. All nails, screws etc used to hang the Aussie Skin above the water table must be non-rusting and sealed with approved Sealant.

Below Water Table Installations

1. All nails, screws etc used to hang the Aussie Skin below the water table must be non-rusting and sealed with a 3"x3" patch of Aussie Skin 550 bonded with Aussie Skin Double Sided Tape.

DETAIL #:

AVM-550-6000

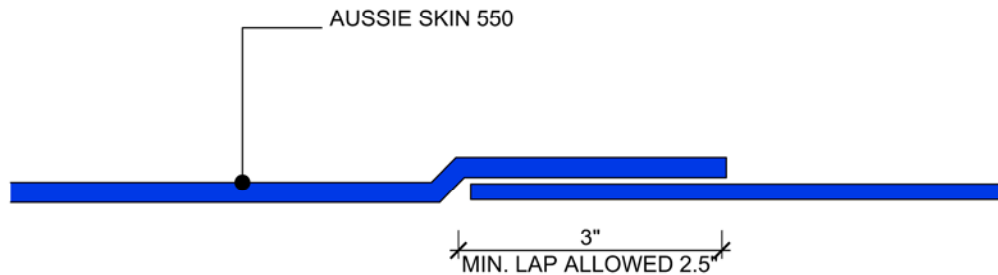
AVM System 550

Aussie Skin 550

Lapping Detail



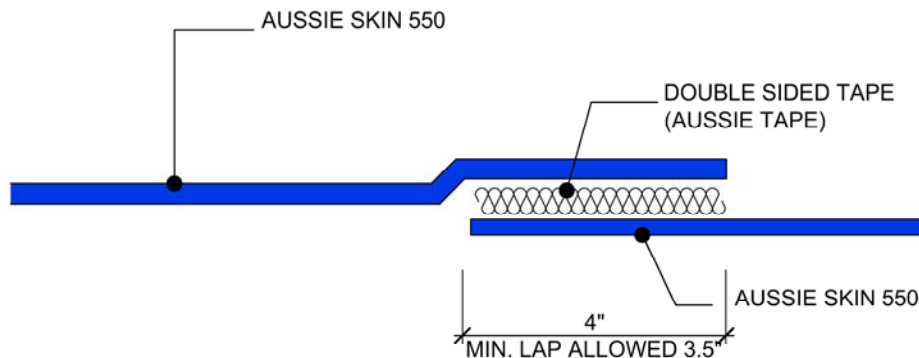
FACTORY LAP



Important Note: When installing the "Factory Lap", The Installation procedure should be as follows:

- 1) Remove the black plastic film from the factory lap to expose the adhesive.
- 2) Lay down the 2nd layer of Skin over the exposed Adhesive. (leave 1/8"-1/4" of adhesive exposed) Roll the steel roller over the 2nd layer of skin several times while applying significant pressure.
- 3) Verify seam is completely and properly bonded.

NON-FACTORY LAP



Important Note: When installing the "Non-Factory Lap", The Installation procedure should be as follows:

- 1) Remove the black plastic film from one side of the double-sided tape.
- 2) Lay down the Double-Sided Tape on the sanded side of the first layer of Aussie Skin.
- 3) THOROUGHLY COMPRESS THE DOUBLE-SIDED TAPE ONTO THE SANDED SIDE OF THE AUSSIE SKIN USING AVM'S APPROVED STEEL ROLLERS. (ROLL THE STEEL ROLLER OVER THE TAPE SEVERAL TIMES WHILE APPLYING SIGNIFICANT PRESSURE!)
- 4) Carefully remove the clear film (2nd layer of film) from the Double-Sided Tape.
- 5) Lay down the 2nd layer of Skin over the exposed double-Sided Tape. (Leave 1/8"-1/4" of tape exposed) Roll the steel roller over the 2nd layer of skin several times while applying significant pressure.
- 6) Verify seam is completely and properly bonded.
- 7) If multiple pieces of Double-Sided Tape are needed, overlap them!

NOTES:

1. Aussie Skin 550 is a Heavy, Duty, Easy to Install, Puncture Resistant Sheet Waterproofing Membrane with added technologies creating excellent adhesion between the membrane and wet Concrete or Shot-Crete.
2. All surfaces must be clean and sound before installing the Lap Joints
3. Double sided tape must be used as supplied (min. 4" wide)

Below Water Table Installations

Below the water table, drain board may be substituted with approved protection layer

AVM Industries, Inc.
8245 Remmet Ave, Canoga Park, CA 91304

Quality Waterproofing Products

888.414.1041 818.888.0050
www.avmindustries.com

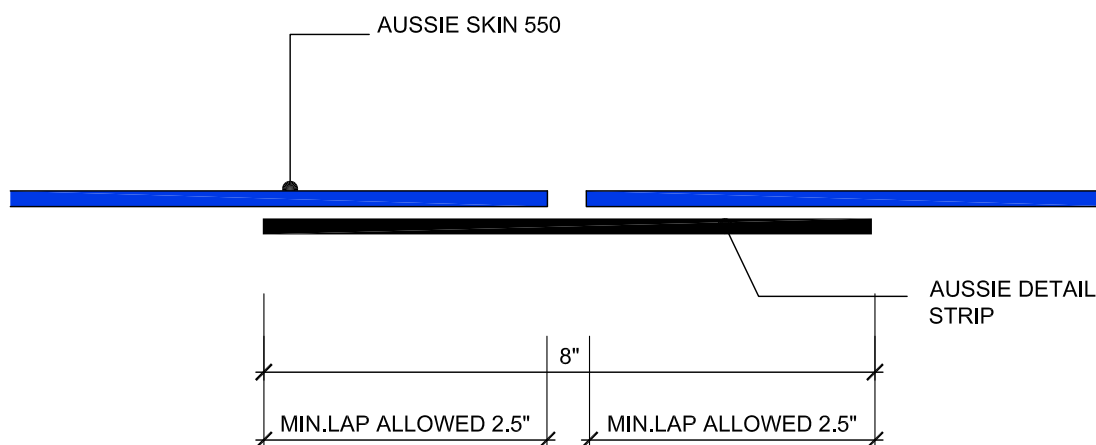
FILE NAME: 0550-6000

Protected by Copyright - AVM Industries, Inc. Revision Date 3/10/2017

DETAIL #:
AVM-550-6001

AVM System 550
Aussie Skin 550

Non-Factory Lap with Detail Strip



Important Note: When installing the "Alternative Non-Factory Lap", The Installation procedure should be as follows:

- 1) Remove the black plastic film from the Detail Strip to expose the Adhesive.
- 2) Lay down the first layer of Aussie Skin over the exposed Adhesive covering half the width of the detail strip. Roll the steel roller over the seam several times while applying significant pressure.
- 3) Lay down the 2nd layer of Aussie Skin over the remaining exposed adhesive. Leave 1/8"-1/4" of adhesive exposed between the two sheets of Aussie Skin. Roll the steel roller over the seam several times while applying significant pressure.
- 4) Verify seam is complete and properly bonded.

NOTES:

1. Aussie Skin 550 is a Heavy, Duty, Easy to Install, Puncture Resistant Sheet Waterproofing Membrane with added technologies creating excellent adhesion between the membrane and wet Concrete or Shot-Crete.
2. All surfaces must be clean and sound before installing the Lap Joints

Below Water Table Installations

Below the water table, drain board may be substituted with approved protection layer

AVM Industries, Inc.
8245 Remmet Ave, Canoga Park, CA 91304

Quality Waterproofing Products

888.414.1041 818.888.0050
www.avmindustries.com

FILE NAME: 0550-6001

Protected by Copyright - AVM Industries, Inc. Revision Date 3/10/2017

DETAIL #:

AVM-550-6010

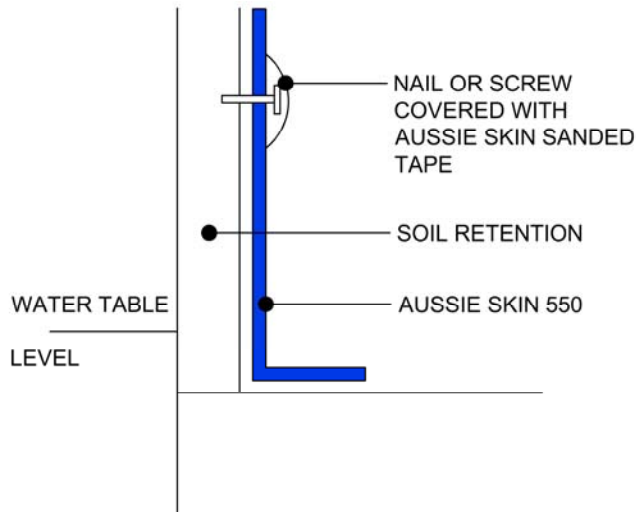
AVM System 550

Aussie Skin 550

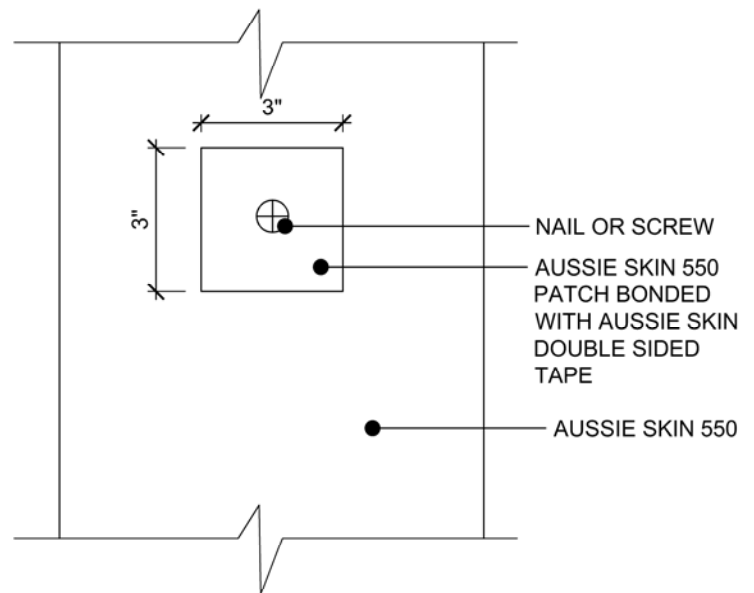
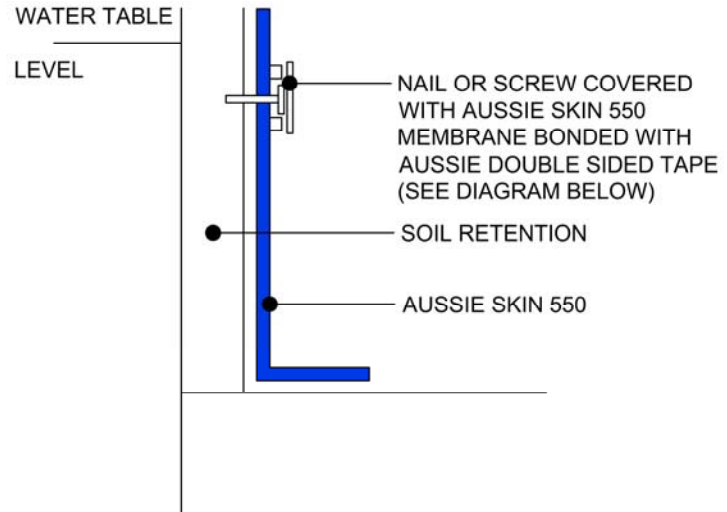
Nail/Screw Detail



NON-WATERTABLE PATCH



WATERTABLE PATCH



NOTES:

1. Aussie Skin 550 is a Heavy, Duty, Easy to Install, Puncture Resistant Sheet Waterproofing Membrane with added technologies creating excellent adhesion between the membrane and wet Concrete or Shot-Crete.
2. All nails, screws etc used to hang the Aussie Skin above the water table must be non-rusting and sealed with approved Sealant.

Below Water Table Installations

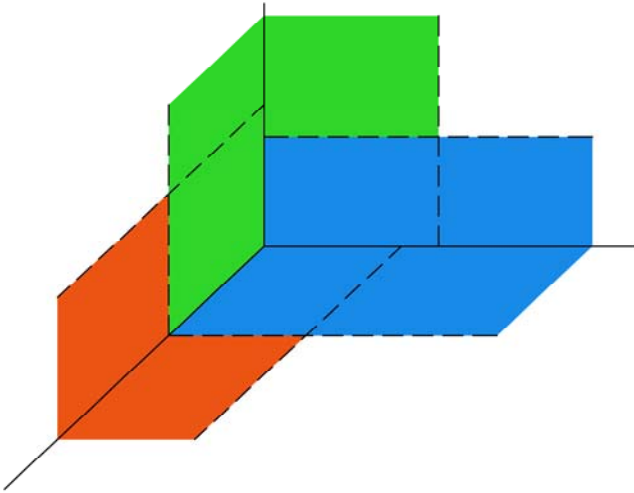
1. All nails, screws etc used to hang the Aussie Skin below the water table must be non-rusting and sealed with a 3"x3" patch of Aussie Skin 550 bonded with Aussie tape.

DETAIL #:
AVM-550-6200
AVM System 550
Aussie Skin 550

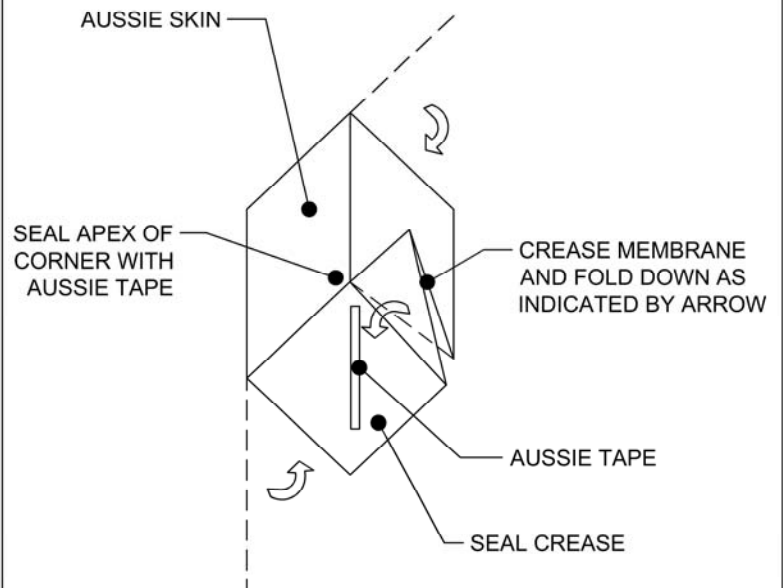
Inside Corner Detail



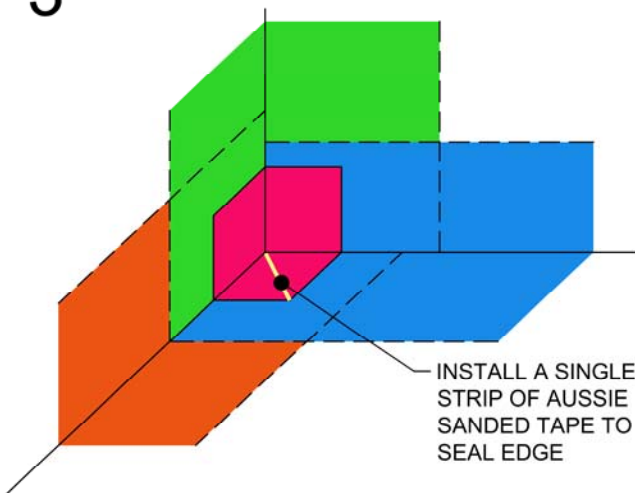
1



2



3



NOTES:

1. Aussie Skin 550 is a Heavy, Duty, Easy to Install, Puncture Resistant Sheet Waterproofing Membrane with added technologies creating excellent adhesion between the membrane and wet Concrete or Shot-Crete.
2. All surfaces must be clean and sound before installing the Lap Joints

A

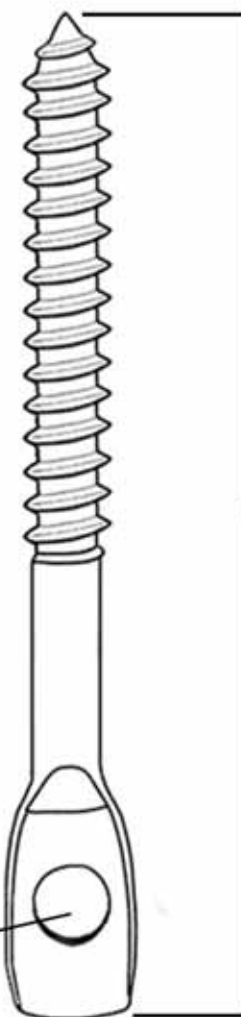
B

C

D

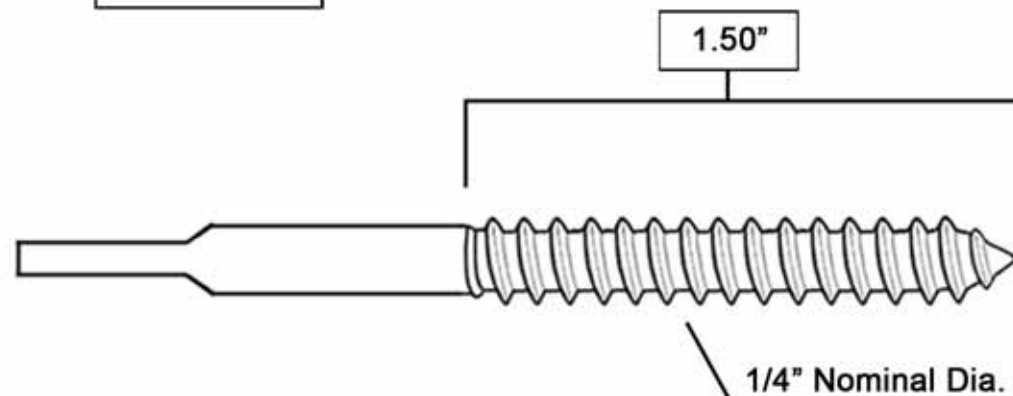
REV	DESCRIPTION	DATE	APPROVAL

FRONT VIEW

3"
Nominal

3/16"

SIDE VIEW



1.50"

1/4" Nominal Dia.

Notes: Eye lag screw part # W300M, wood screw designed specifically for suspended ceiling applications only. Distributed by Doc's Marketing Corp. Simi Valley, CA 93063 1,000pcs per box (For tension applications only)

Material	CHQ 1022 Steel
Finish	Coarse

Release
Approval:

Release Date:

Customer
Approval:

Tolerances:

.X = + / - 0.02in
.XX = + / - 0.01in
.XXX = + / - .005in
Unless Otherwise Specified

Proprietary Rights:
All information that
is contained within
is proprietary. Not for
unauthorized use or
disclosure.



DOC'S MARKETING CORP.

Part Number:

W300M

Title: 3" I-LAG™ Brand Eye Lag Screw for Wood

Date: 1/17/14

Drawing Number: 0178

Drawn by: RO

Sheet 1 of X

A

B

C

D