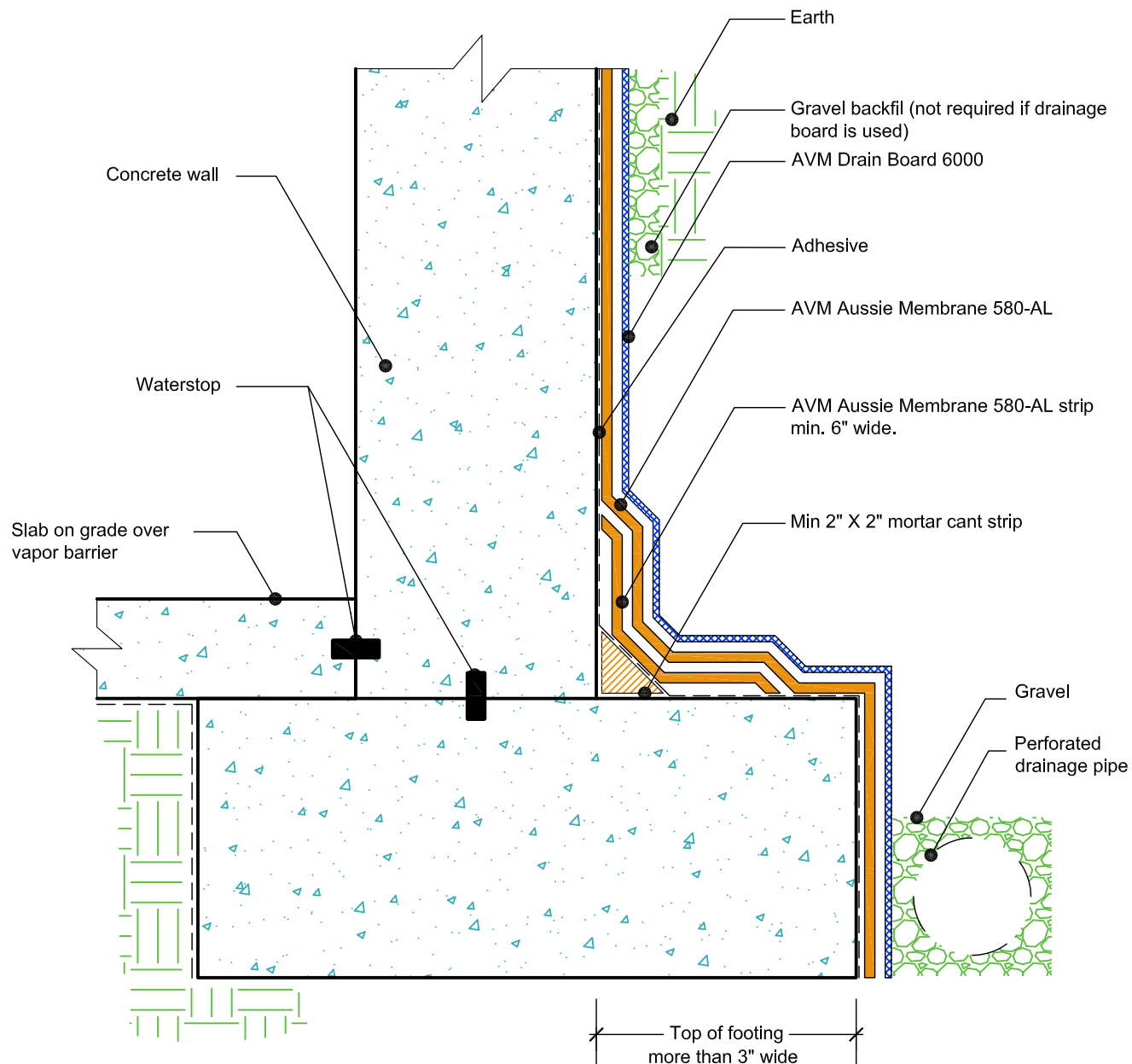


DETAIL #:  
AVM-0580-AL-0002-C

AVM SYSTEM 580-AL

AUSSIE MATE® 580-AL

Retaining Walls  
Slab on Grade at Top of Footing  
AVM AUSSIE MATE® 580-AL  
Bituminous Sheet Waterproofing.



**NOTES:**

1. Aussie Membrane 580-AL is a UV stable, 60-mil heavy duty bituminous waterproofing sheet membrane with an aluminum protection layer for Below-Grade waterproofing applications.
2. For appropriate drainage/protection, use AVM Drain Board 6000.
3. Contact AVM if no drain board or protection board is specified.
4. Only AVM approved liquid adhesive may be used. (water-based and solvent-based adhesives are available)
5. AVM's "Bottom Drain 12" may be accepted in lieu of the perforated drainage pipe (French Drain). Check local building codes for approval.
6. Exposed top of footing is More than 3"
7. Inside corner (Wall-to-Footing) shown with Water Stop
8. All Aussie Membrane 580-AL overlaps must be minimum 2.5".

AVM Industries, Inc.  
8245 Remmet Ave, Canoga Park, CA 91304

Quality Waterproofing Products

888.414.1041 818.888.0050  
www.avmindustries.com