



# AVM Drain Board 2000/2020

## Prefabricated Drainage Composites

Sections 334600 / 334613 / 334616 /  
334619 / 334633  
Prefabricated Drainage Composites

### Product Name

AVM Drain Board 2000 / 2020

### Manufactured by

AVM Industries, Inc.  
8245 Remmet Ave, Canoga Park, CA 91304  
888.414.1041 818.888.0050  
www.avmindustries.com

### Product Description

AVM Drain Board 2000 provides protection for waterproofing systems and managing subsurface water around building foundations. Soil back fill is retained by a filter fabric while allowing water to pass into the drainage core providing hydrostatic relief. Collected water is then conveyed to AVM Bottom Drain 6" or AVM Bottom Drain 12", or other collection systems.

### Where to Use

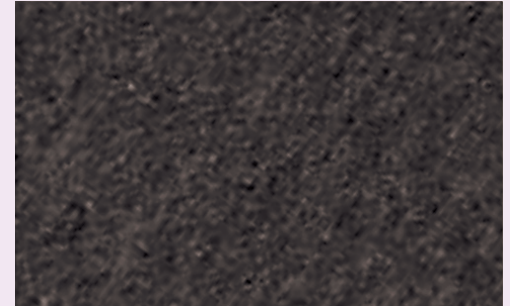
AVM Drain Board 2000/2020 is ideal for use with foundation walls, retaining walls, planters, roof gardens, bridge abutments, and under slabs.

### AVM Drain Board 2000

Consists of a light duty impermeable polymeric sheet cusped under heat and pressure to form a high flow dimpled drainage core. The core is then bonded to a layer of non-woven filter fabric. Soil back fill is retained by a filter fabric while allowing water to pass into the drainage core providing hydrostatic relief. Collected water is then conveyed to AVM Bottom Drain 6" or AVM Bottom Drain 12", or other collection systems.

### AVM Drain Board 2020

The identical properties as AVM Drain Board 2000 with the addition of a protection sheet bonded to the back side of the cusped core providing protection for soft membrane waterproofing systems. AVM Drain Board 2020 is compatible with waterproofing systems without the use of a protection board. Limited to 20 feet of backfill.



### Delivery, Storage, and Handling

- a. Packing and shipping: Provide materials in original unopened containers with manufacturer's labels intact and legible.
- b. Acceptance at site:
  1. Unload materials: check for damage.
  2. Damaged materials determined by visual inspection will not be accepted.
  3. Remove rejected materials from site immediately.
- b. Storage and protection:
  1. Store materials in dry area in manufacturer's protective packaging with labels and installation instructions intact.
  2. Store materials under cover, off ground; protect from sunlight.
  3. Transmissivity or Flow Q with hydraulic gradient of 1 with confining stress indicated in MANUFACTURED UNITS Article in accord with ASTM D4716-01

### Project Conditions

1. All surfaces to which the Drainage Boards are applied to must be clean, sound and stable enough to properly attach and hold onto the drain boards being installed.
2. Warn personnel against hazards of working with this product. Sharp edges, weight, etc. Note other hazardous conditions on the job that might require special attention or extra protective gear and or any other special protective or safety procedures.
3. Protect adjacent surfaces which could be damaged during the application procedure.

### Inspection of Substrates

1. Verify 1% slope to underslab collection pipes or site water drainage system at underslab drainage system location substrate.
2. Examine conditions and substrates where products specified in this section are installed; submit written notification of unacceptable conditions or substrates.

### System Application

Refer to installation instructions.

### Quality Control

- a. Visually inspect all drain board surfaces to ensure a full and proper drain board system application, especially at corners, drainage footings and other hard-to-reach areas.
- b. All unsatisfactory areas shall be repaired prior to final acceptance.

### Protection of Installed Work

Always protect the waterproofing and drainage system until fully covered with dirt, concrete, shot-crete, etc.

### Availability and Cost

Contact AVM Industries or your approved applicator for pricing and availability.

### Technical Services

Technical services are available by contacting our offices at: 888.414.1041 or 818.888.0050 or visit [www.avmindustries.com](http://www.avmindustries.com)

### System Specifications

See next page.

## Physical Properties

Core	2000	2020
Compressive Strength (ASTM D-1621)	11,000 psf (528 kNm <sup>2</sup> )	11,000 psf (528 kNm <sup>2</sup> )
Thickness (ASTM D-1777)	.40" (10.16 mm)	.40" (10.16 mm)
Flow (Hydraulic gradient = 1) (ASTM D-4716)	18 g/min/ft (223 L/min/m)	18 g/min/ft (223 L/min/m)

Fabric	2000	2020
Flow (ASTM D-4491)	140 gal/min/ft <sup>2</sup> (5704 L/min/m <sup>2</sup> )	140 gal/min/ft <sup>2</sup> (5704 L/min/m <sup>2</sup> )
Puncture (ASTM D-4833)	65 lbs. (.30 kN)	65 lbs. (.30 kN)
AOS (EOS)	70 U.S. Sieve (.212 mm)	70 U.S. Sieve (.212 mm)
Grab Tensile (ASTM D-4632)	100 lbs. (.45 kN)	100 lbs. (.45 kN)

General Characteristics			
Roll Length	Roll Width	Roll Weight (approx. lbs.)	
		2000	2020
50 ft. (15.24 m)	4.0 ft. (1.22 m)	38.0	38.0
50 ft. (15.24 m)	6.5 ft. (1.98 m)	61.0	61.0
50 ft. (15.24 m)	8.5 ft. (2.59 m)	80.0	80.0

For a complete list of details in CAD or PDF, please visit our website at [www.avmindustries.com](http://www.avmindustries.com).

**AVM Industries, Inc.**  
 8245 Remmet Ave, Canoga Park, CA 91304  
 888.414.1041 818.888.0050

**Quality Waterproofing Products**



**[www.avmindustries.com](http://www.avmindustries.com)**