



ICC ESR-2503  
L.A. RR#: 25550

## Retaining Walls Spec

# AVM System 500 Aussie Membrane

## Heavy Duty Below Grade Bituminous Waterproofing Membrane

Sections 071000 / 071400 / 071416  
Fluid Applied Waterproofing

### Product Name

Aussie Membrane  
AVM System 500

### Manufactured by

AVM Industries, Inc.  
8245 Remmet Ave, Canoga Park, CA 91304  
888.414.1041 818.888.0050  
www.avmindustries.com

### Product Description

The AVM AUSSIE MEMBRANE is a vapor-proof, brown rubber/bitumen liquid emulsion with excellent adhesion, which dries to a tough, black seamless flexible waterproof membrane. The AUSSIE MEMBRANE is a single component thixotropic cold-applied bitumen emulsion with added rubber latex. It exhibits excellent elongation and recovery properties.

### Where to Use

**Retaining Walls:** Waterproof below-grade, concrete, block walls, basements, etc.

### Warranty

AVM Industries will warranty the installed membrane for a period of five (5) years. Ten (10) year warranties are also available. For complete warranty details, contact AVM Industries or consult with your applicator.

### Delivery, Storage, and Handling

- Delivery of all the AVM System 500 materials to the job site must be in their original sealed containers, with manufacturer's name and label intact.
- Handle and store containers in accordance with printed instructions.
- Store at temperatures between 50°F and 90°F. Do not store materials in direct sunlight or where they may be damaged by water or rain.
- Failure to comply with the recommended storage conditions may result in premature deterioration of the product. For specific storage advice, please contact AVM Industries and/or its representatives.
- Keep all materials out of the reach of children.
- If irritation occurs during use, liberally flush affected areas with water. If irritation continues, see a physician immediately.

### Project Conditions

- All surfaces to which the AUSSIE MEMBRANE is applied to must be sound and stable, with an even finish and free from dust, loose debris, grease, curing agents, etc. .
- The AUSSIE MEMBRANE may be applied to damp but not waterlogged surfaces (Green Concrete)



- Do not apply materials at temperatures below 50°F and falling or if precipitation is imminent. Do not apply materials in direct sunlight at temperatures above 90°F or rising.
- Warn personnel against hazards of materials to skin and eyes. Note other hazardous conditions on the job that might require special protective gear and or any other special protective or safety procedures.
- Protect adjacent surfaces which could be damaged during the application procedure.
- This system must not be used to cover Expansion Joints.

### System Application

Read the AVM System 500 Installation Instructions Prior to Installation. Application instructions vary based on application surfaces. Following are common (Generic) application procedures only. For specific application procedures, download the appropriate installation instructions.

### Preparation

- Make sure surface is even without holes, gaps, etc. Make sure substrate has no cracks larger than 1/16" wide. Pay special attention to shrinkage cracks between the blocks and the mortar at the block's joints.
- If necessary, apply a thin slurry coat using AVM Crete 6200.
- Apply a 4"x4" mortar cant at 45° at the cold joints. (Where the block meets the footings)
- Priming is highly recommended! Especially if surfaces are old, dusty or very dense (such as solid concrete) Always use AVM Primer 500 when installing over horizontal surfaces. Apply Primer using roller, brush or sprayer.

### Membrane Installation

**Roller/Brush:** Apply a liberal coat of the Aussie Membrane to all surfaces. (Roll up and down) Allow to cure until dry to the touch. Apply a second coat of the Aussie Membrane going side to side. Allow to dry to the touch. Check for pinholes and proper thickness using a mil gauge. Make sure it's a minimum 60 mils at all places when completely dry and 90 mils if still wet. Full cure is typically achieved after 24 hours. Drying times may vary based on temperature, humidity and other factors. Applying a third coat is highly recommended.

**Spray:** Mix contents in bucket with drill and paddle for 30 - 60 seconds. Product will thin out significantly. (The thinning does not affect performance) Do NOT add water! Use an airless sprayer to apply. Apply product until saturated but stop before dripping or sagging occurs. Once dry to the touch, apply a second coat spraying in the other direction. Check for thickness. (60 mils dry / 90 mils wet)

### Important Notes:

- 90 mils dry on vertical block walls is highly recommended.
- Although it is possible to spray 60 dry mils in one coat, doing so in two coats reduces the chances of leaving spots and pinholes uncovered or with too little product.

### Quality Control

- Visually inspect all coated surfaces to ensure a full and proper coating application, especially at corners, drainage footings and other hard-to-reach areas.
- All unsatisfactory areas shall be repaired prior to final acceptance.

### Protection of Installed Work

- The completed section shall be protected for the first 24 hours after application or until the surface is sufficiently cured. (The amount of drying time may vary depending on temperature and humidity conditions)
- Always protect the waterproofing from possible damage. Install the AVM Drain Board 6000 and appropriate drainage system. Refer to Technical Details, "Min Thickness Table" and "Installation Instructions for more info.

### Availability and Cost

Contact AVM Industries or your approved applicator for pricing and availability.

### Technical Services

Technical services are available by contacting our offices at: 888.414.1041 or 818.888.0050 or visit [www.avmindustries.com](http://www.avmindustries.com)

### System Specifications

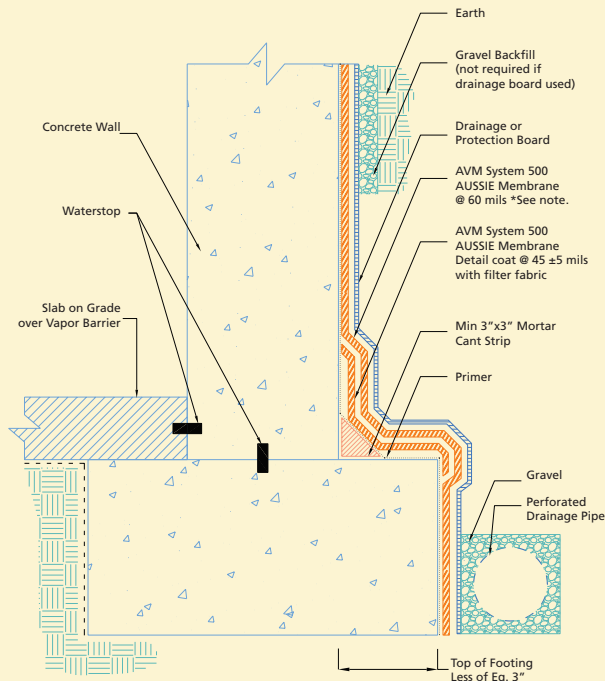
See next page.

The following coverages are based on controlled tests. Actual coverages may vary.

Technical Information		
Color	Dark brown. After drying: black	
Specific Gravity	1.189 gr/cm <sup>2</sup>	
Coverage: (Varies depending on substrate)	24–25 sq.ft./Gal. @ 60 Dry Mills	
Flash Point	Non-flammable	
Service Temperature	15°F-177°F (-10°C to +80°C)	
Application Temperature	42°F-132°F (+5°C to 55°C)	
Solid Content	64%	
Tensile Strength	>15.4 Lbs (>7 kg)	ASTM D 412
Elongation at break	>1000%	ASTM D 412
Resistance to water pressure 1 tm 24 hr	Passed	ASTM D751
Water vapor transmission	4.0 gr/m <sup>2</sup> 24 hr	ASTM D 96
Recovery	85%	IS 1536
Creep At 177°F (80°C)	No Creep	DIN 52123
Resistance to Standing Water	Passed	ASTM D 2939
Bacterial Attack in soil 30 days @ 105°F (40°C)	Passed	ASTM D 2939
Crack bridging	>3/16" (>5mm)	IS 1731
Certifications	ISO 9002, Green Label, I.Q. Net (International Certification Network)	

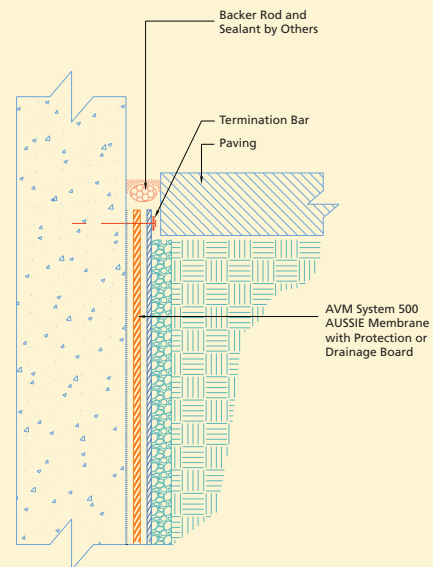
Item / Component	Packaging	Approx Shipping Weights	VOC
AVM Primer 500	2.0/5.0 gal. pails	2.0/5.0 gal. 15/39 lbs.	15 Grams/Liter
AVM Aussie Membrane 500	5.0 gal. pails	5.0 gal. 52.5 lbs	19 Grams/Liter

### Slab on Grade at Top of Footing



Note: For applications deeper than 6 feet, see AUSSIE Membrane Thickness Chart.

### Termination at Grade



For a complete list of details in CAD or PDF, please visit our website at [www.avmindustries.com](http://www.avmindustries.com).

**AVM Industries, Inc.**  
 8245 Remmet Ave, Canoga Park, CA 91304  
 888.414.1041 818.888.0050

**Quality Waterproofing Products**



[www.avmindustries.com](http://www.avmindustries.com)