



Generic Spec

Sections 071000 / 071400 / 071416
Fluid Applied Waterproofing

Product Name

Patch 512
AVM System 512

Manufactured by

AVM Industries, Inc.
8245 Remmet Ave, Canoga Park, CA 91304
888.414.1041 818.888.0050
www.avmindustries.com

Product Description

Patch 512 is an advanced, ecologically friendly, black bitumen-polymer liquid membrane. Patch 512 creates, after curing, a tough and flexible seamless waterproofing membrane. Patch 512 may be applied as one thick layer (up to 1" thick) using a trowel, brush or squeegee.

Where to Use

Fast Curing Applications: Ideal for jobs requiring short curing times. Patch 512 may be coated over or covered within 30 minutes of application.

Fast Curing Patch: Patch 512 is ideal for use as a fast curing patch prior to installing other below grade membranes. Use at penetrations, cracks, voids, etc. Apply up to 1" thick in a single coat! Patch 512 can typically be coated over within 30 minutes of application.

Retaining Walls: Waterproof below-grade, concrete, block walls, basements, etc.

Planters: Waterproof planters and other landscaping features.

Elevator Pits: Waterproof elevator pits and similar applications

Warranty

AVM Industries will warranty the installed membrane for a period of one (1) year. For complete warranty details, contact AVM Industries or consult with your applicator.

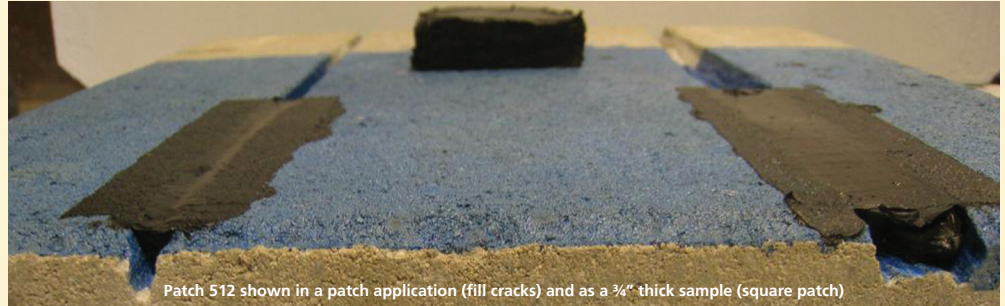
Delivery, Storage, and Handling

- Delivery of all the AVM System 512 materials to the job site must be in their original sealed containers, with manufacturer's name and label intact.
- Handle and store containers in accordance with printed instructions.
- Store at temperatures between 50°F and 90°F. Do not store materials in direct sunlight or where they may be damaged by water or rain. In tropical climates (where it is very hot and humid) the product must be stored in an air-conditioned environment. Do not allow product to freeze.
- Failure to comply with the recommended storage conditions may result in premature deterioration of the product. For specific

AVM System 512 Patch 512

Fast Curing Block Wall Waterproofing Patch

Fast curing two components bituminous membrane or patch



storage advice, please contact AVM Industries and/or its representatives.

- Shelf Life – 12 months from date of manufacture.
- Keep all materials out of the reach of children.
- If irritation occurs during use, liberally flush affected areas with water. If irritation continues, see a physician immediately.

Project Conditions

- All surfaces to which the Patch 512 is applied to must be sound and stable, with an even finish and free from dust, loose debris, grease, curing agents, etc.
- The Patch 512 may be applied to damp but not waterlogged surfaces (Green Concrete)
- Do not apply materials at temperatures below 50°F and falling or if precipitation is imminent. Do not apply materials in direct sunlight at temperatures above 90°F or rising.
- Warn personnel against hazards of materials to skin and eyes. Note other hazardous conditions on the job that might require special protective gear and or any other special protective or safety procedures.
- Protect adjacent surfaces which could be damaged during the application procedure.
- This system must not be used to cover Expansion Joints.

Preparation

Patch: Clean cracks, prime, fill with Patch 512.

Membrane:

- Make sure surface is even without holes, gaps, etc. Make sure substrate has no cracks larger than 1/16" wide. Pay special attention to shrinkage cracks between the blocks and the mortar at the block's joints.
- If necessary, apply a thin slurry coat using AVM Crete 6200.
- Apply a 4"x4" cant at 45° at the cold joints. (Where the block meets the footings)
- Priming is required! Apply Primer using roller, brush or sprayer. Apply AVM Primer 500 to all surfaces scheduled to receive the Patch 512. Allow Primer 500 to cure until dry to the touch. (Typically 30-60 minutes)

Mixing Instructions

Add component B (powder component) to the pail containing component A (liquid Bituminous component) while mixing with a mixer (not supplied) that is attached to a high-speed electric drill (approx. 600 to 800 rpm). Mix the combined material for at least 1 minute to achieve homogeneous material.

Note: (Pot Life) The combined Patch 512 (Component A + B) should be completely used within 30 minutes from mixing.

System Application

Apply a liberal coat of the Patch 512 to all surfaces using a trowel, brush or squeegee. (Apply up and down) Allow to cure until dry to the touch. (15-60 minutes) Check for pinholes and proper thickness using a mil gauge. Make sure it's a minimum 90 mils at all places when completely dry and 120 mils if still wet. If needed, apply a second coat of the Patch 512 going side to side. Allow to dry until dry to the touch. Drying times may vary based on temperature, humidity and other factors.

Quality Control

- Visually inspect all coated surfaces to ensure a full and proper coating application, especially at corners, drainage footings and other hard-to-reach areas.
- All unsatisfactory areas shall be repaired prior to final acceptance.

Protection of Installed Work

- The completed section shall be protected for the first 24 hours after application or until the surface is sufficiently cured.
- Always protect the waterproofing from possible damage. Use AVM Foam Board, AVM Drainage Boards or AVM Approved Protective Panels. Refer to the "Aussie Membrane Min Thickness Table" for protection details.
- Protection may be applied to the Patch 512 once cured. (Wait at least 1 hour from application) Beware that if the Patch 512 is not sufficiently cured, the protection might sag or come off.

Availability and Cost

Contact AVM Industries or your approved applicator for pricing and availability.

Technical Services

Technical services are available by contacting our offices at: 888.414.1041 or 818.888.0050 or visit www.avmindustries.com

System Specifications

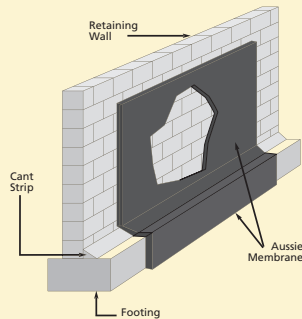
See below.

The following coverages are based on controlled tests. Actual coverages may vary.

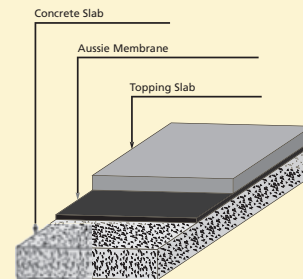
Technical Information		
Color	Dark brown. After drying: black	
Specific Gravity	1.19 gr/cm ²	
Coverage: (Varies depending on substrate and thickness)	20–25 Sq.Ft./Gallon @ 60 Dry Mills	
Flash Point	Non-flammable	
Service Temperature	15°F-140°F (-10°C to +60°C)	
Application Temperature	42°F-104°F (+5°C to 40°C)	
Solid Content:	>65%	
Tensile Strength	> 0.15MPa	ASTM D 412
Resistance to Water	Passed	ASTM D 2939
Bacterial Attack in soil 30 days @ 105°F (40°C)	Passed	ASTM D 3083
Heat Stability	>194°F (>90°C)	ASTM D 2939
Cold Flexibility	14°F (-10°C)	ASTM D 522

Item / Component	Packaging	Approx Shipping Weights	VOC
AVM Primer 500	2.0/5.0 gal. pails	2.0/5.0 gal. 15/39 lbs.	15 Grams/Liter
AVM Patch 512 (Part A)	3.7 gal. pails	36.3 lbs. (16.5 kg)	2 Grams/Liter
AVM Patch 512 (Part B)	Can	3.3 lbs. (1.5 kg) can	

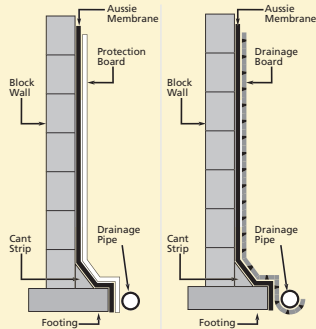
Retaining Wall with Aussie Membrane



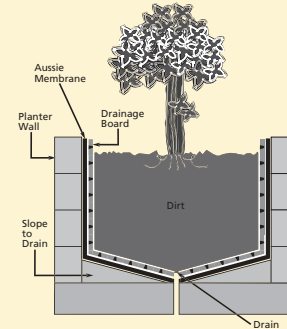
In-Between Slab Waterproofing



Block Walls with Aussie Membrane



Planter with Aussie Membrane



For a complete list of details in CAD or PDF, please visit our website at www.avmindustries.com.

AVM Industries, Inc.
8245 Remmet Ave, Canoga Park, CA 91304
888.414.1041 818.888.0050

Quality Waterproofing Products



www.avmindustries.com