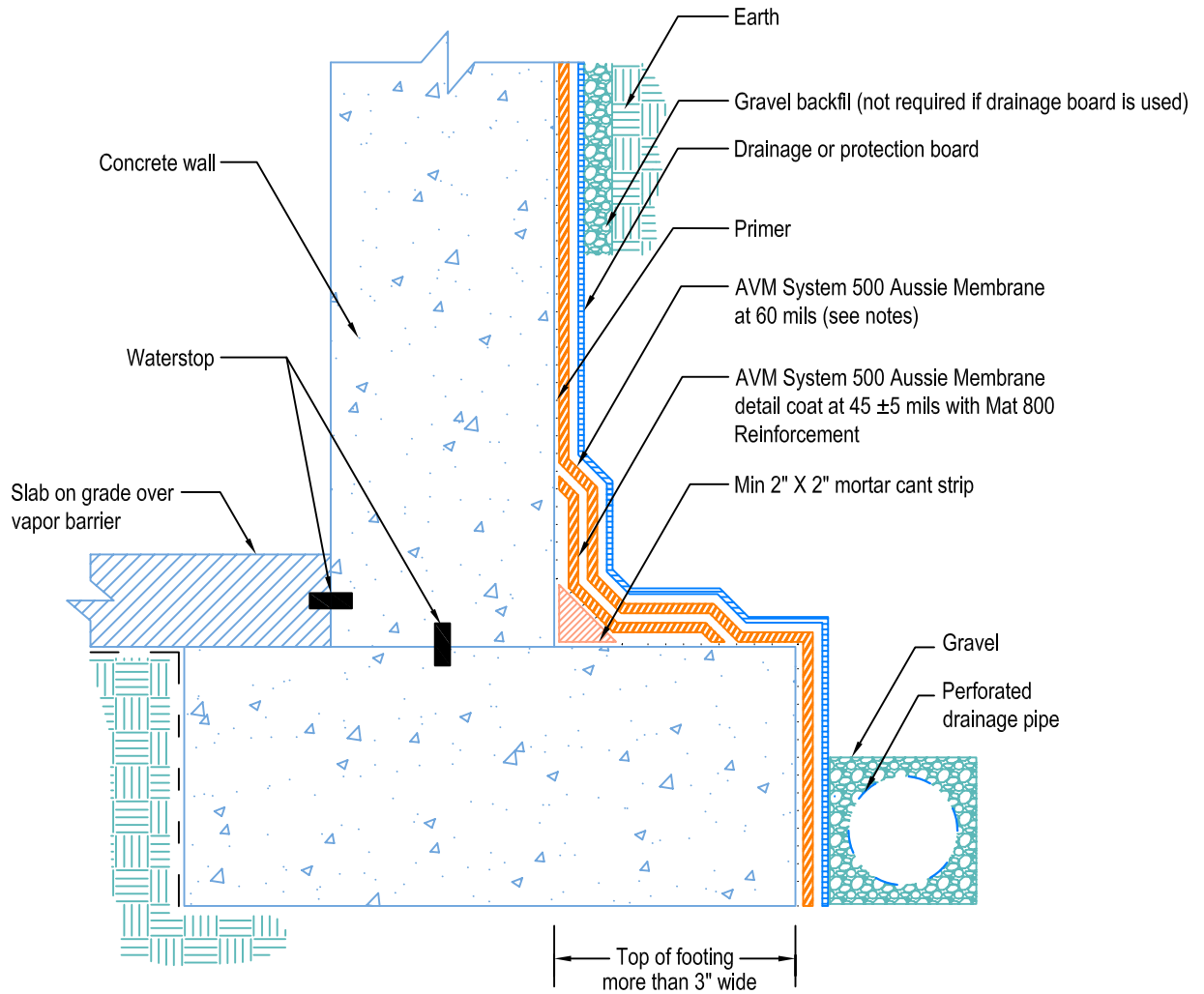


DETAIL # :  
 AVM-500-0002-C  
 AVM System 500  
 Aussie Membrane  
 VIEW TYPE:  
 Cut Sheet

Retaining Walls  
 Slab on Grade at Top of Footing  
**AVM System 500 Aussie Membrane**  
 Fluid Applied Waterproofing



**Notes:**

1. Aussie Membrane 500 is a water-based bitumen (roller or brushed applied) for below-grade, between-slab, planters, roof-gardens and similar type waterproofing
2. For proper membrane thickness and appropriate protection and drainage, refer to AVM System 500, Aussie Membrane's "min. thickness table"
3. Contact AVM if no drain board or protection board is specified
4. AVM's "bottom drain 12" may be accepted in lieu of the perforated drainage pipe (French drain.) Check local building codes for approval.
5. Exposed top of footing is more than 3".
6. Inside corner (wall-to-footing) shown with water stop