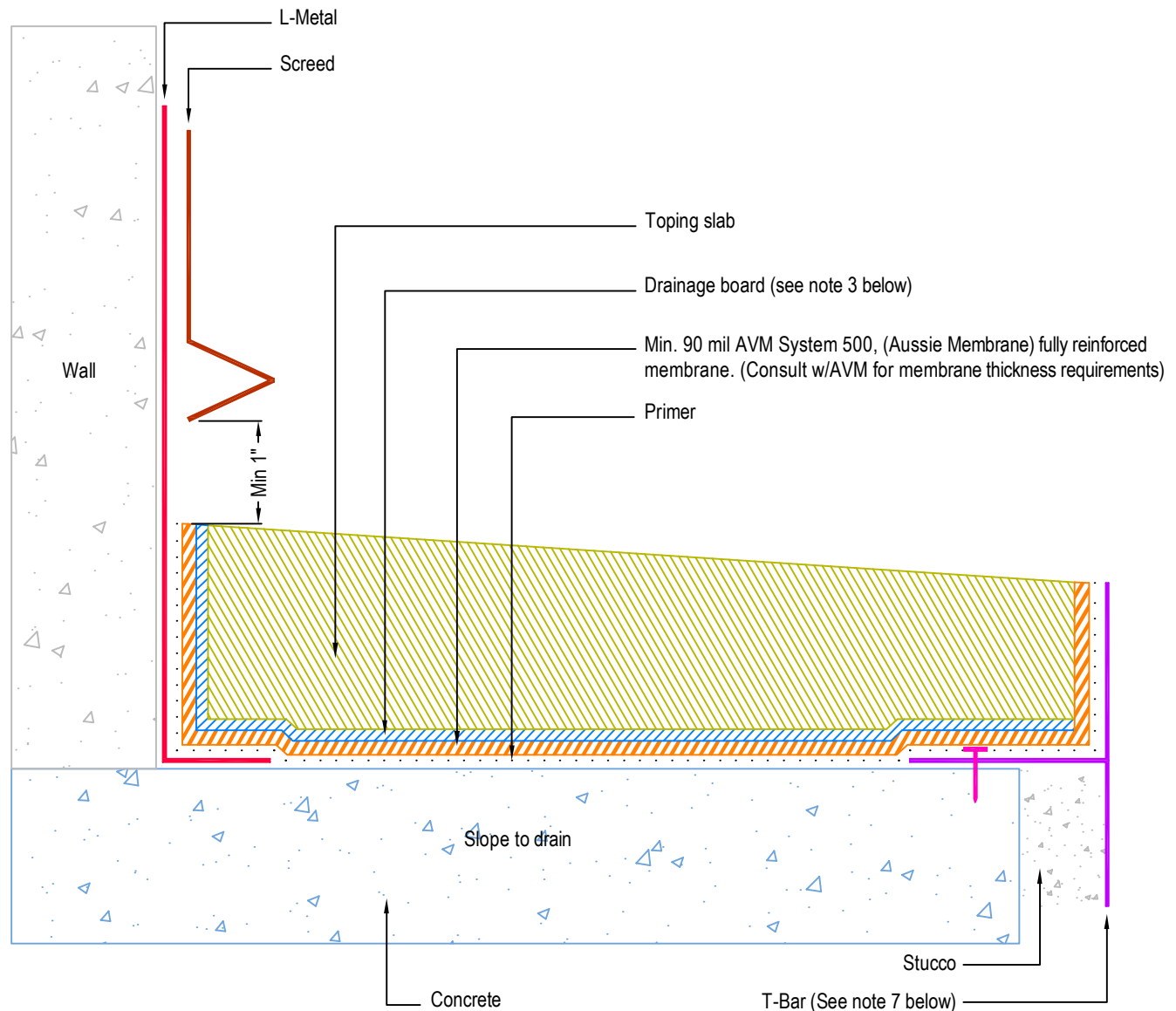


DETAIL # :  
AVM-500-2022-C

AVM System 500  
Aussie Membrane

VIEW TYPE:  
Cut Sheet

# Topping Slab on Concrete Substrate over AVM System 500 Aussie Membrane with Drain Board, Fluid Applied Waterproofing (Medium Duty)



## Notes:

1. Aussie Membrane 500 is a water-based bitumen (roller or brushed applied) for below-grade, between-slab, planters, roof-gardens and similar type waterproofing.
2. Contact AVM if no drain board is specified
3. For drainage/protection - use AVM Drain Board 6000. For topping slabs over 4" thick or vehicular applications, use AVM Drain Board 9000
4. This assembly is for pedestrian traffic use only. For vehicular applications and other heavy loads, contact AVM for approval.
5. Substrates must be sloped to drains and/or edges before membrane installation. (Min 1/4" per foot)
6. If water is to drain over the edge, then edge metals (if used) MUST have sufficient weep holes (at least every 6") and must be strong enough (thick enough) to act as a concrete form.
7. When drainage is over the edges, edge assemblies must allow for proper water evacuation. (None should trap water) Consult AVM for details.
8. Reinforce the Aussie Membrane with AVM Mat 800 at all corners, metal transitions, penetrations, gaps, drains, etc.
9. For extra protection, lay down 1/8" or 1/4" thick asphaltic protective panels before installing the drain board. (Required for topping slabs over 4" thick or vehicular applications)

AVM Industries, Inc.  
8245 Remmet Ave, Canoga Park, CA 91304

Quality Waterproofing Products

888.414.1041 818.888.0050  
www.avmindustries.com

FILE NAME: 0500-2022-C-Topping-Slab-On-Concrete-MD-CS

Revision Date: 09/11/2014  
Protected by Copyright © AVM Industries, Inc.