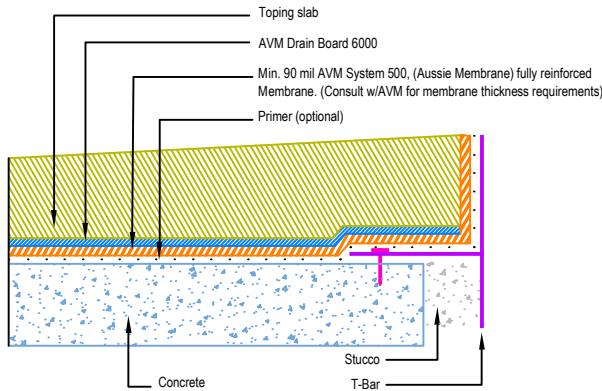
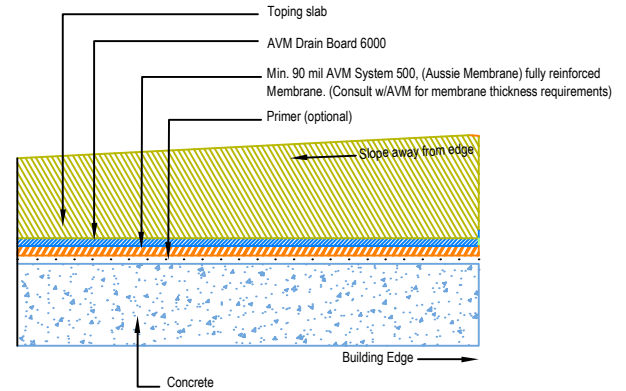


DETAIL # :
 AVM-500-2074-C
 AVM System 500
 Aussie Membrane
 VIEW TYPE:
 Cut Sheet

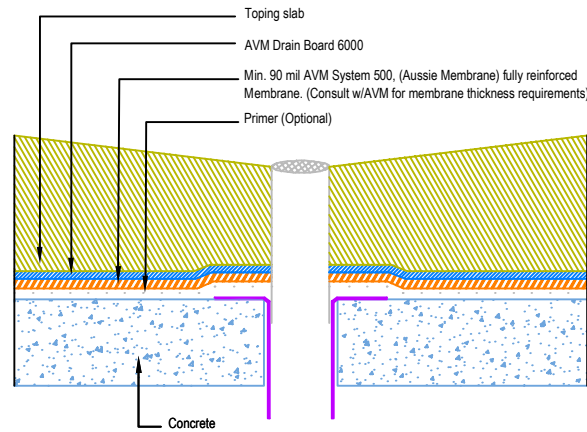
Other Edge and Drain Details
 Topping Slabs Waterproofing on
 Concrete Substrates
AVM System 500 Aussie Membrane
 Fluid Applied Waterproofing (Medium Duty)



Slope Away from Edge Detail with Edge Metals
Medium Duty



Slope Away from Edge Detail without Edge Metals
Medium Duty



Drain Detail on Concrete
Medium Duty

Notes:

1. See drawing and notes on detail number AVM-500-2022-C for more information on medium duty applications.
2. If water is to drain away from the edge into area floor drains, then edge metals do not require weep holes.
3. Reinforce the Aussie Membrane with AVM Mat 800 at all corners, metal transitions, penetrations, gaps, drains, etc.
4. A 2-part concrete drain with a bowl and a flange and built-in weep holes should be used. (Consult AVM for proper drain selection)