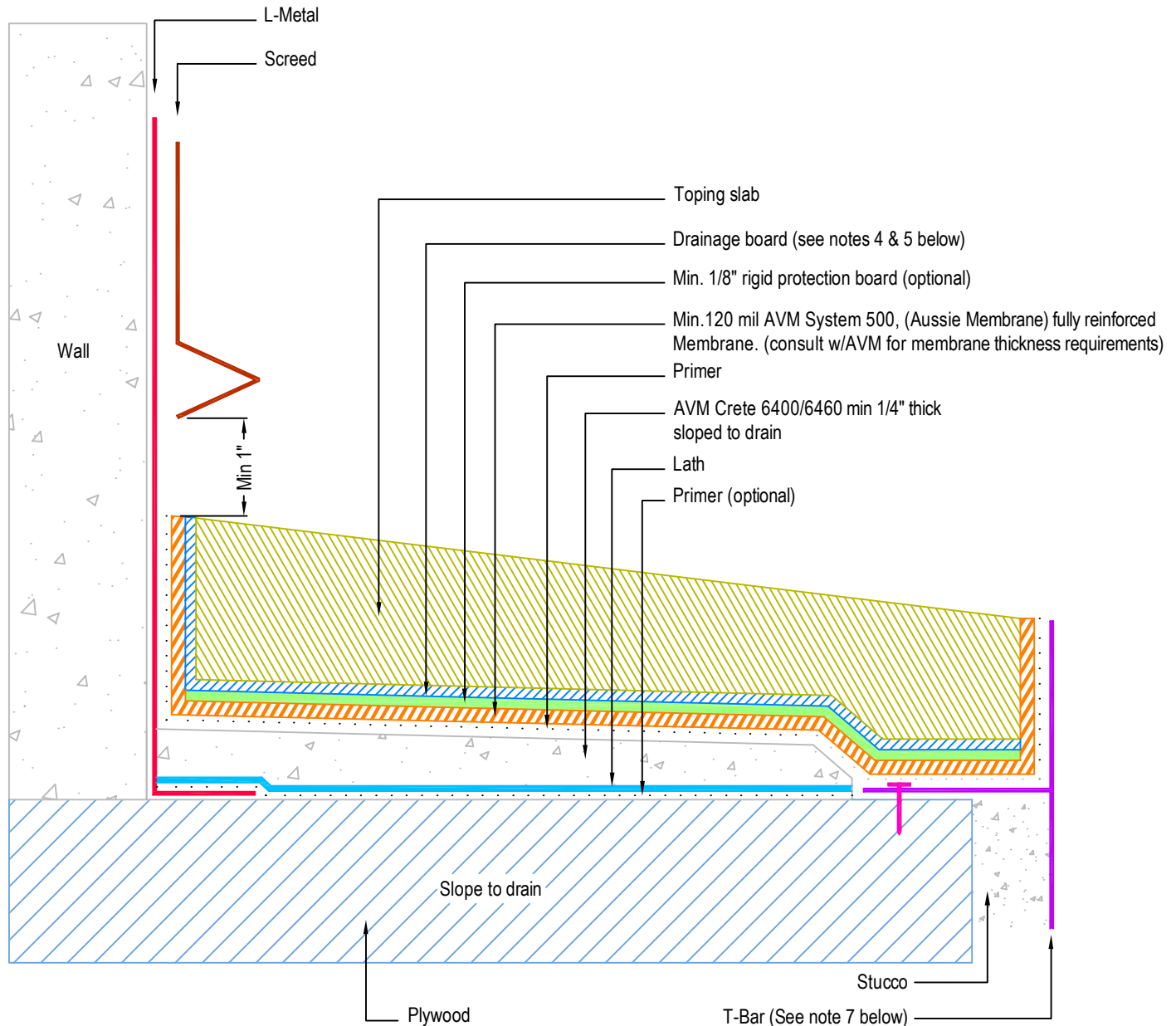


DETAIL # :
 AVM-500-2504-P
 AVM System 500
 Aussie Membrane
 VIEW TYPE:
 Cut Sheet

Topping Slab on Plywood Substrate over
AVM System 500 Aussie Membrane
 with Drain Board & Thin Crete Base,
 Fluid Applied Waterproofing (Heavy Duty)
 Concrete Over Metals



Notes:

1. Aussie Membrane 500 is a water-based bitumen (roller or brushed applied) for below-grade, between-slab, planters, roof-gardens and similar type waterproofing.
2. Contact AVM if no drain board is specified
3. Crete 6400/6460. Refer to the Crete 6400 or Crete 6460 Spec Sheets or Installation Instructions for more information
4. For drainage/protection - use AVM Drain Board 6000. For topping slabs over 4" thick or vehicular applications, use AVM Drain Board 9000
5. This assembly is for pedestrian traffic use only. For vehicular applications and other heavy loads, contact AVM for approval.
6. For extra protection, use 1/8" or 1/4" thick asphaltic protective panels below the drain board.
7. Substrates must be sloped to drains and/or edges before membrane installation. (Min 1/4" per foot)
8. If water is to drain over the edge, then edge metals MUST have sufficient weep holes (at least every 6") and must be strong enough (thick enough) to act as a concrete form.
9. When drainage is over the edges, edge assemblies must allow for proper water evacuation. (None should trap water) Consult AVM for details.
10. Reinforce the Aussie Membrane with AVM Mat 800 at all corners, metal transitions, penetrations, gaps, drains, etc.

AVM Industries, Inc.
 8245 Remmet Ave, Canoga Park, CA 91304

Quality Waterproofing Products

888.414.1041 818.888.0050
 www.avmindustries.com

FILE NAME: 0500-2504-P-Topping-Slab-On-Plywood-HD-CS

Revision Date: 07/18/2014
 Protected by Copyright © AVM Industries, Inc.