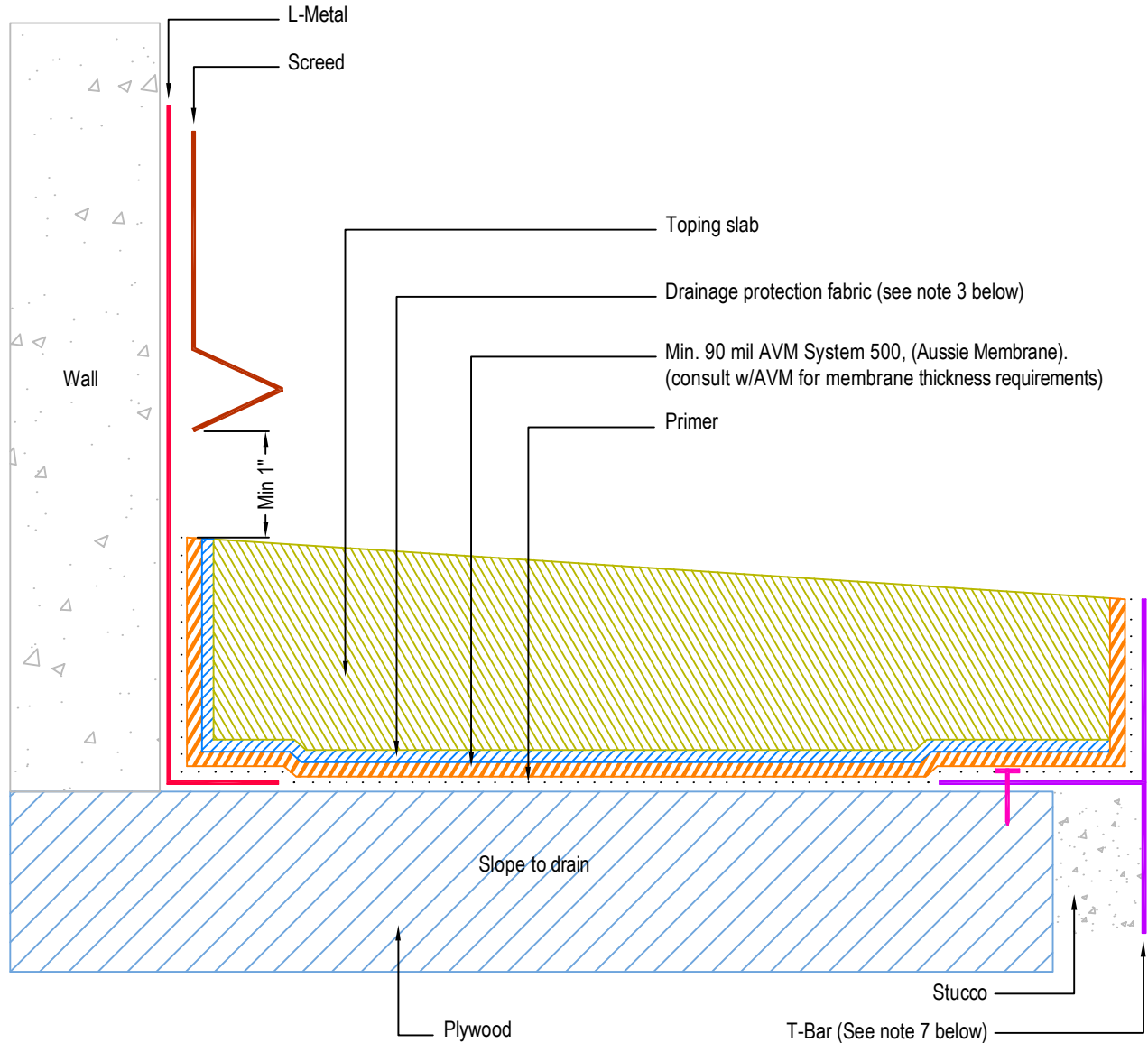


DETAIL # :
 AVM-500-2542-P
 AVM System 500
 Aussie Membrane
 VIEW TYPE:
 Cut Sheet

Topping Slab on Plywood Substrate over
AVM System 500 Aussie Membrane
 with Drainage Fabric, Fluid Applied
 Waterproofing (Light Duty)



Notes:

1. Aussie Membrane 500 is a water-based bitumen (roller or brushed applied) for below-grade, between-slab, planters, roof-gardens and similar type waterproofing.
2. Contact AVM if no drain board or protection board is specified
3. For drainage/protection - use AVM Drainage & Protection Fabric DPF-16.
4. Reinforce the Aussie Membrane with AVM Mat 800 at all plywood joints, corners, metal transitions, penetrations, etc.
5. This assembly is for pedestrian traffic use only.
6. Plywood substrates must be sloped to drains and/or edges before membrane installation. (Min 1/4" per foot)
7. If water is to drain over the edge, then edge metals MUST have sufficient weep holes (at least every 6") and must be strong enough (thick enough) to act as a concrete form.
8. When drainage is over the edges, edge assemblies must allow for proper water evacuation. (None should trap water) Consult AVM for details.

AVM Industries, Inc.
 8245 Remmet Ave, Canoga Park, CA 91304

Quality Waterproofing Products

888.414.1041 818.888.0050
 www.avmindustries.com

FILE NAME: 0500-2542-P-Topping-Slab-On-Plywood-LD-CS

Revision Date: 07/14/2014
 Protected by Copyright © AVM Industries, Inc.