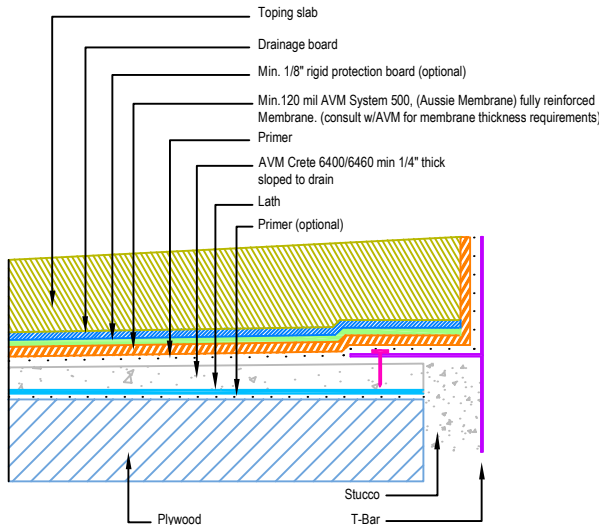
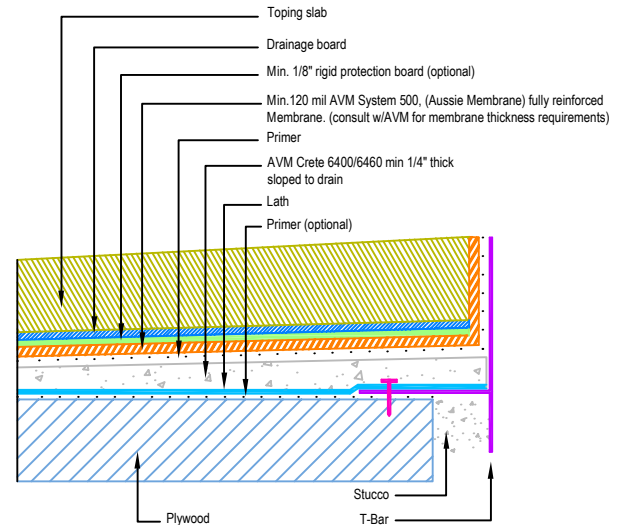


DETAIL # :  
 AVM-500-2572-P  
 AVM System 500  
 Aussie Membrane  
 VIEW TYPE:  
 Cut Sheet

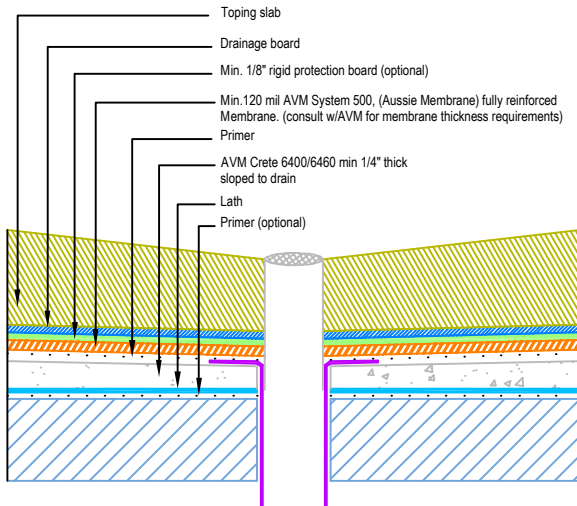
Other Edge and Drain Details  
 Topping Slabs Waterproofing on  
 Plywood Substrates  
**AVM System 500 Aussie Membrane**  
 Fluid Applied Waterproofing (Heavy Duty)



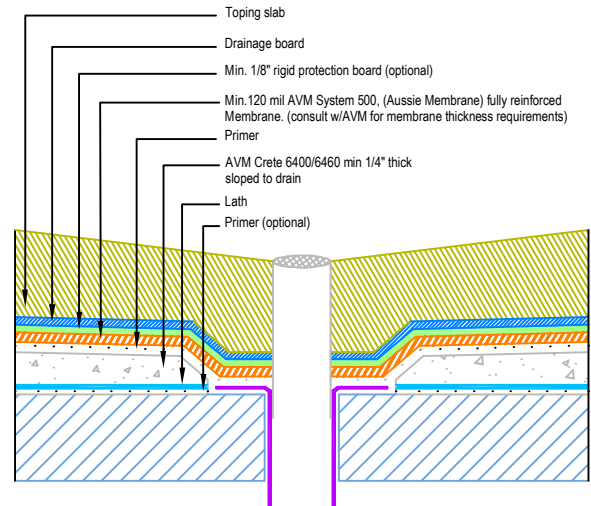
Slope Away from Edge Detail  
Concrete Under Metals



Slope Away from Edge Detail  
Concrete Over Metals



Drain Flange Sitting on  
Crete 6400/6460



Drain Flange Sitting on  
Plywood Substrate

Notes:

1. See drawing and notes on detail number AVM-500-2502-P for more information.
2. If water is to drain away from the edge into area floor drains, then edge metals do not require weep holes.
3. Reinforce the Aussie Membrane with AVM Mat 800 at all corners, metal transitions, penetrations, gaps, drains, etc.