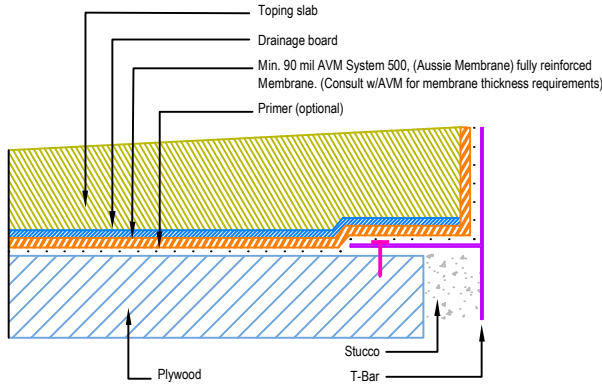
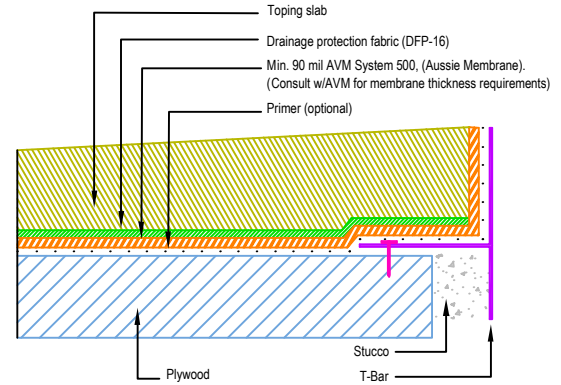


DETAIL # :
 AVM-500-2574-P
 AVM System 500
 Aussie Membrane
 VIEW TYPE:
 Cut Sheet

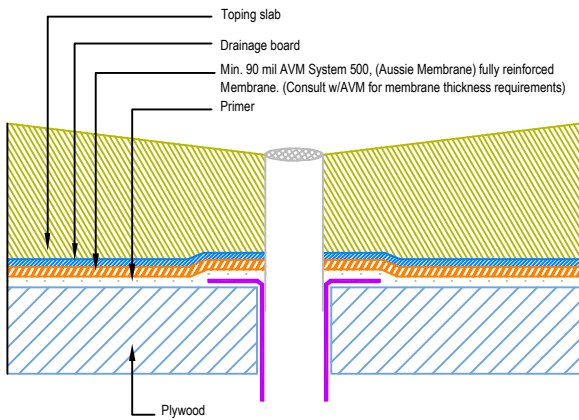
Other Edge and Drain Details
 Topping Slabs Waterproofing on
 Plywood Substrates
AVM System 500 Aussie Membrane
 Fluid Applied Waterproofing (Medium and Light Duty)



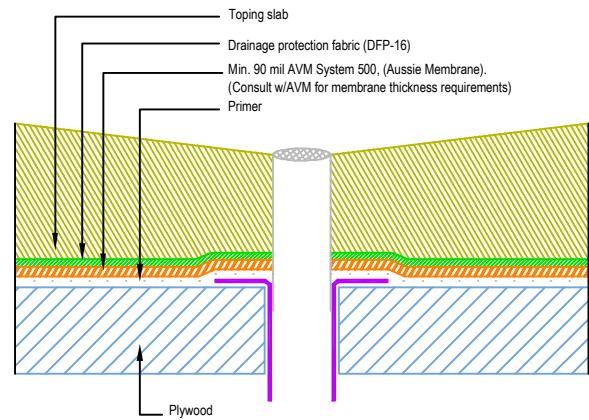
Slope Away from Edge Detail
Medium Duty



Slope Away from Edge Detail
Light Duty



Drain Flange Sitting on Plywood
Medium Duty



Drain Flange Sitting on Plywood
Light Duty

Notes:

1. See drawing and notes on detail number AVM-500-2522-P for more information on medium duty applications.
2. See drawing and notes on detail number AVM-500-2542-P for more information on light duty applications.
3. If water is to drain away from the edge into area floor drains, then edge metals do not require weep holes.
4. Reinforce the Aussie Membrane with AVM Mat 800 at all corners, metal transitions, penetrations, gaps, drains, etc.