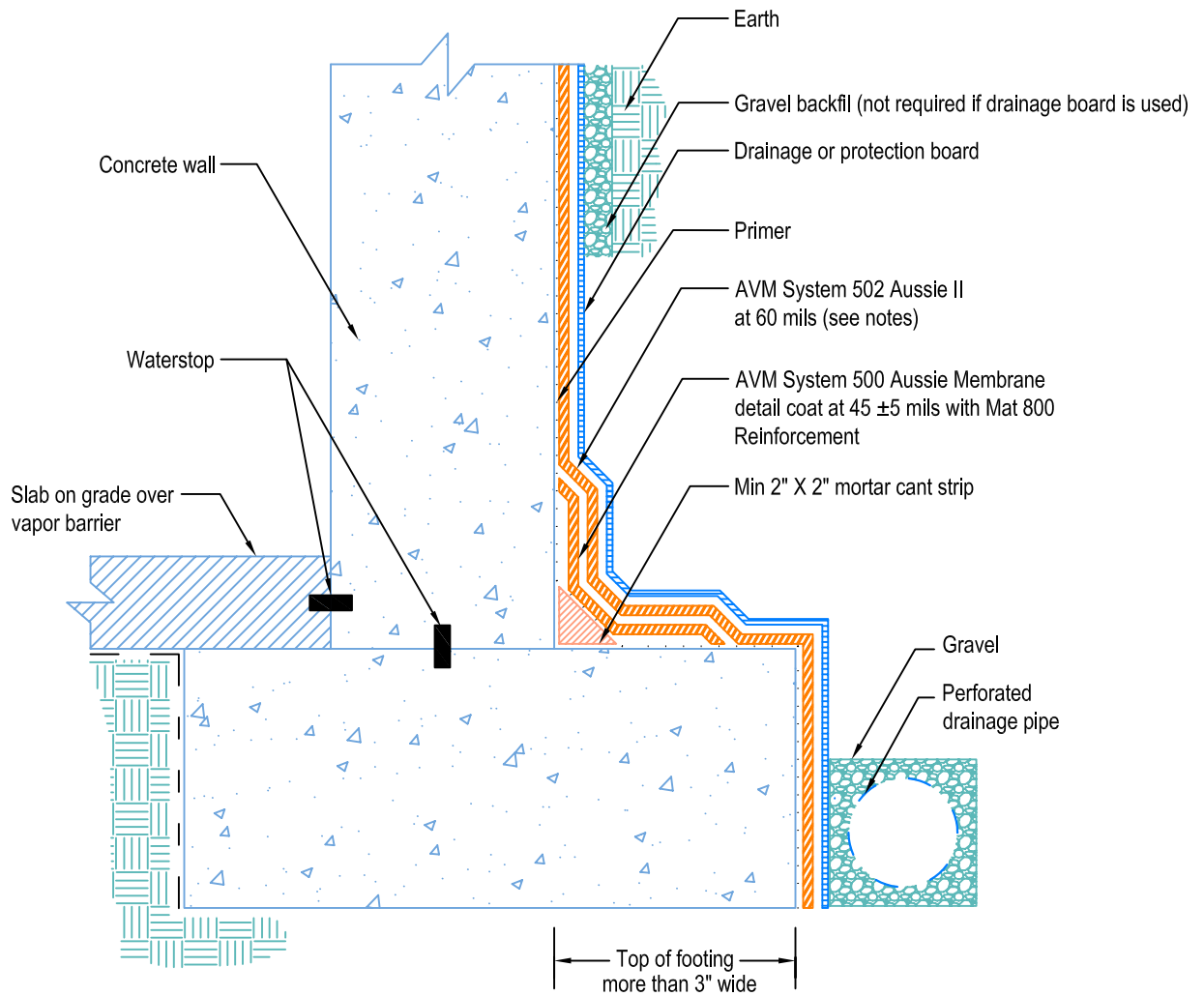


DETAIL # :
 AVM-502-0002-C
 AVM System 502
 Aussie II
 VIEW TYPE:
 Cut Sheet

Retaining Walls
 Slab on Grade at Top of Footing
AVM System 502 Aussie II
 Fluid Applied Waterproofing



Notes:

1. Aussie II (AVM System 502) is a two-component, Water-Based Bitumen (Spray Applied) for Below-Grade, Lagging, Between-Slab, Planters, Roof-Gardens, Paver Systems and similar type Waterproofing.
2. For proper membrane thickness and appropriate protection and drainage, refer to AVM System 502, Aussie II's "Min Thickness Table"
3. Contact AVM if no drain board or protection board is specified
4. AVM's "bottom drain 12" may be accepted in lieu of the perforated drainage pipe (French drain.) Check local building codes for approval.
5. Exposed top of footing is more than 3".
6. Inside corner (wall-to-footing) shown with water stop