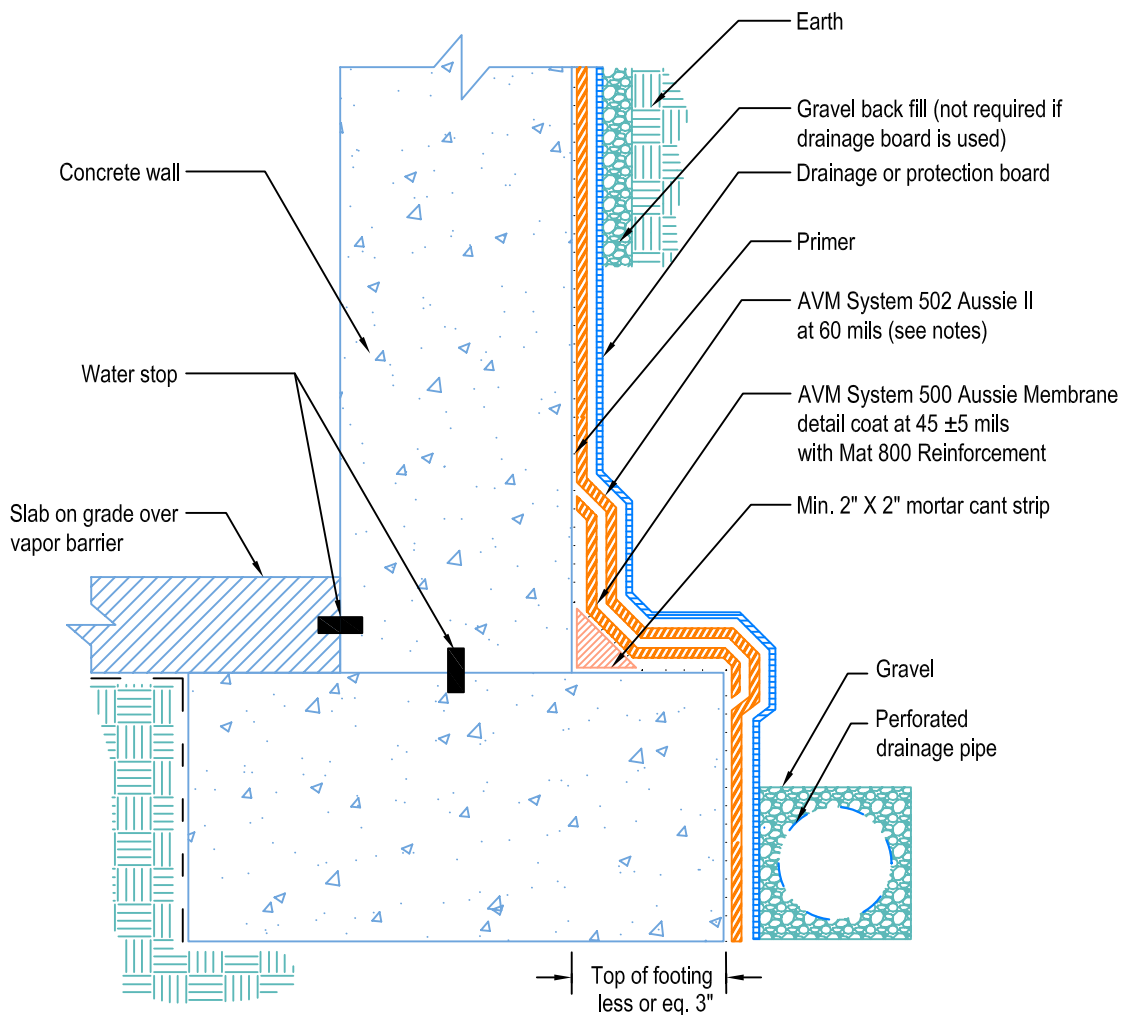


DETAIL # :
AVM-502-0006-C

AVM System 502
Aussie II

VIEW TYPE:
Cut Sheet

Retaining Walls Slab on Grade at Top of Footing AVM System 502 Aussie II Fluid Applied Waterproofing



Notes:

1. Aussie II (AVM System 502) is a two-component, Water-Based Bitumen (Spray Applied) for Below-Grade, Lagging, Between-Slab, Planters, Roof-Gardens, Paver Systems and similar type Waterproofing.
2. For proper membrane thickness and appropriate protection and drainage, refer to AVM System 502, Aussie II's "Min Thickness Table"
3. Contact AVM if no drain board or protection board is specified
4. AVM's "bottom drain 12" may be accepted in lieu of the perforated drainage pipe (French drain.) Check local building codes for approval.
5. Exposed top of footing is less than 3".
6. Inside corner (wall-to-footing) shown with water stop.

AVM Industries, Inc.
8245 Remmet Ave, Canoga Park, CA 91304

Quality Waterproofing Products

888.414.1041 818.888.0050
www.avmindustries.com

FILE NAME: 0502-0006-C-Retaining-Walls-Slab-On-Grade-At-Top-Of-Footing-CS.dwg

Revision Date: 02/23/2012
Protected by Copyright © AVM Industries, Inc.