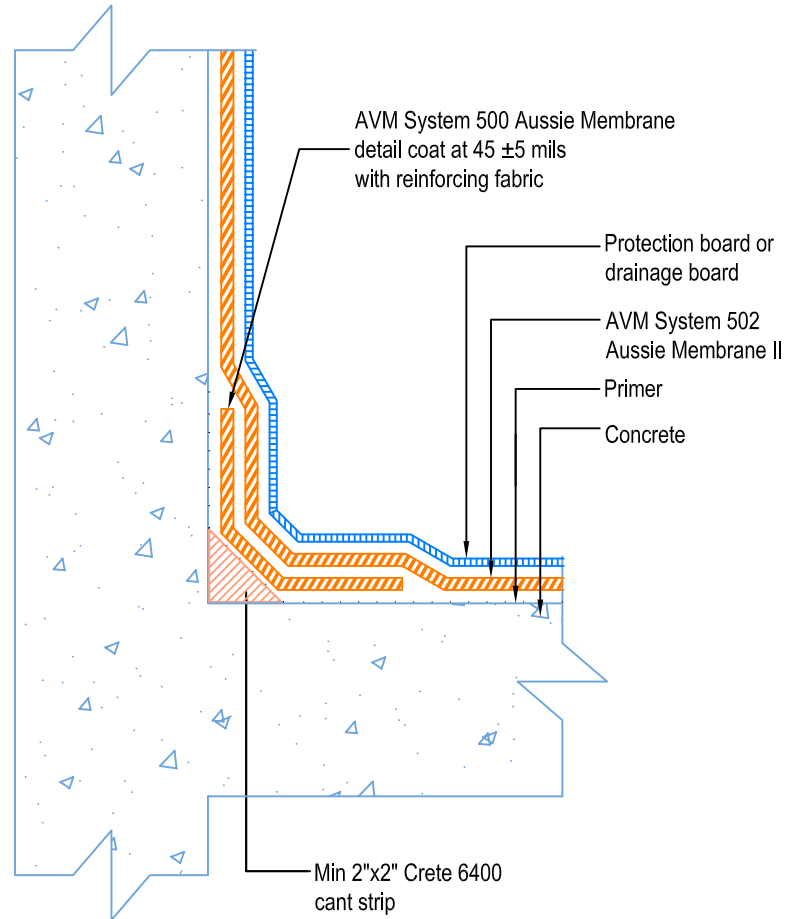


DETAIL # :  
AVM-502-0012-C

AVM System 502  
Aussie II

VIEW TYPE:  
Cut Sheet

Retaining Walls  
Elevated Slab on Grade at Top of Footing  
**AVM System 502 Aussie II**  
Fluid Applied Waterproofing



- Notes:**
1. Aussie II (AVM System 502) is a two-component, Water-Based Bitumen (Spray Applied) for Below-Grade, Lagging, Between-Slab, Planters, Roof-Gardens, Paver Systems and similar type Waterproofing.
  2. For proper membrane thickness and appropriate protection and drainage, refer to AVM System 502, Aussie II's "Min Thickness Table"
  3. Contact AVM if no drain board or protection board is specified.
  4. AVM's "Bottom Drain 12" may be accepted in lieu of the perforated drainage pipe (French Drain). Check local building codes for approval.