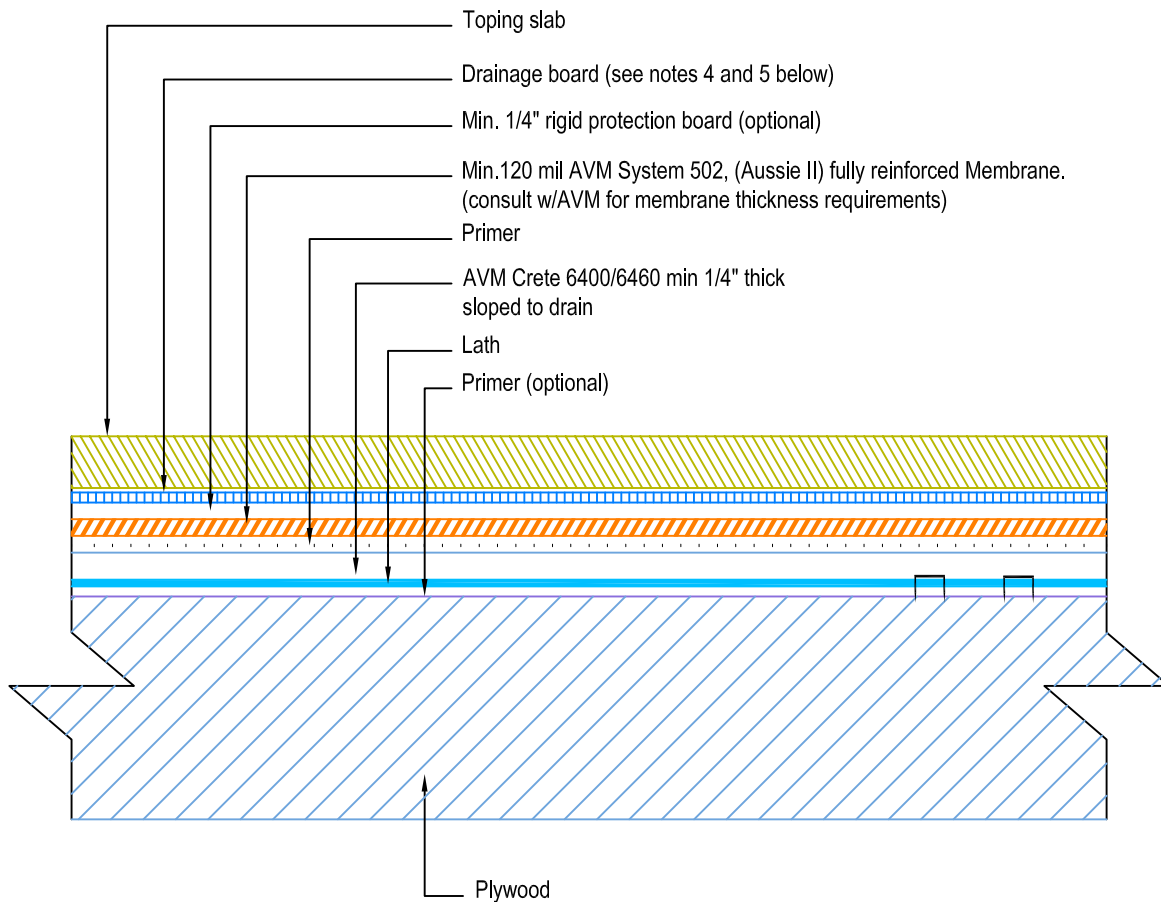


DETAIL # :
 AVM-502-2502-P
 AVM System 502
 Aussie II
 VIEW TYPE:
 Cut Sheet

Topping Slab on Plywood Substrate over
AVM System 502 Aussie II
 Fluid Applied Waterproofing



Notes:

1. Aussie II (AVM System 502) is a two-component, Water-Based Bitumen (Spray Applied) for Below-Grade, Lagging, Between-Slab, Planters, Roof-Gardens, Paver Systems and similar type Waterproofing.
2. For proper membrane thickness and appropriate protection and drainage, refer to AVM System 502, Aussie II's "Min Thickness Table"
3. Contact AVM if no drain board or protection board is specified
4. Topping slabs for pedestrian traffic use AVM Drain Board 6000
5. Topping slabs for vehicular traffic use AVM Drain Board 9000
6. For extra protection, use asphaltic panels below the drainage boards.
7. Crete 6400/6460. Refer to the Crete 6400 or Crete 6460 Spec Sheets or Installation Instructions for more information.

AVM Industries, Inc.
 8245 Remmet Ave, Canoga Park, CA 91304

Quality Waterproofing Products

888.414.1041 818.888.0050
 www.avmindustries.com