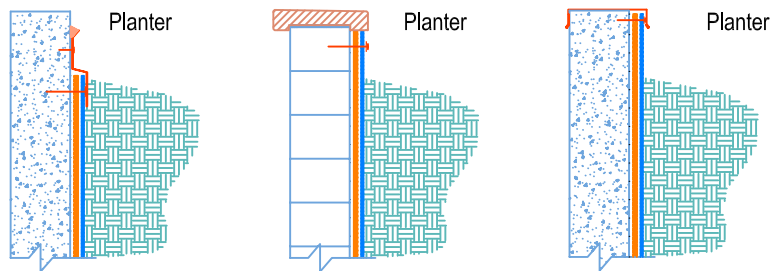
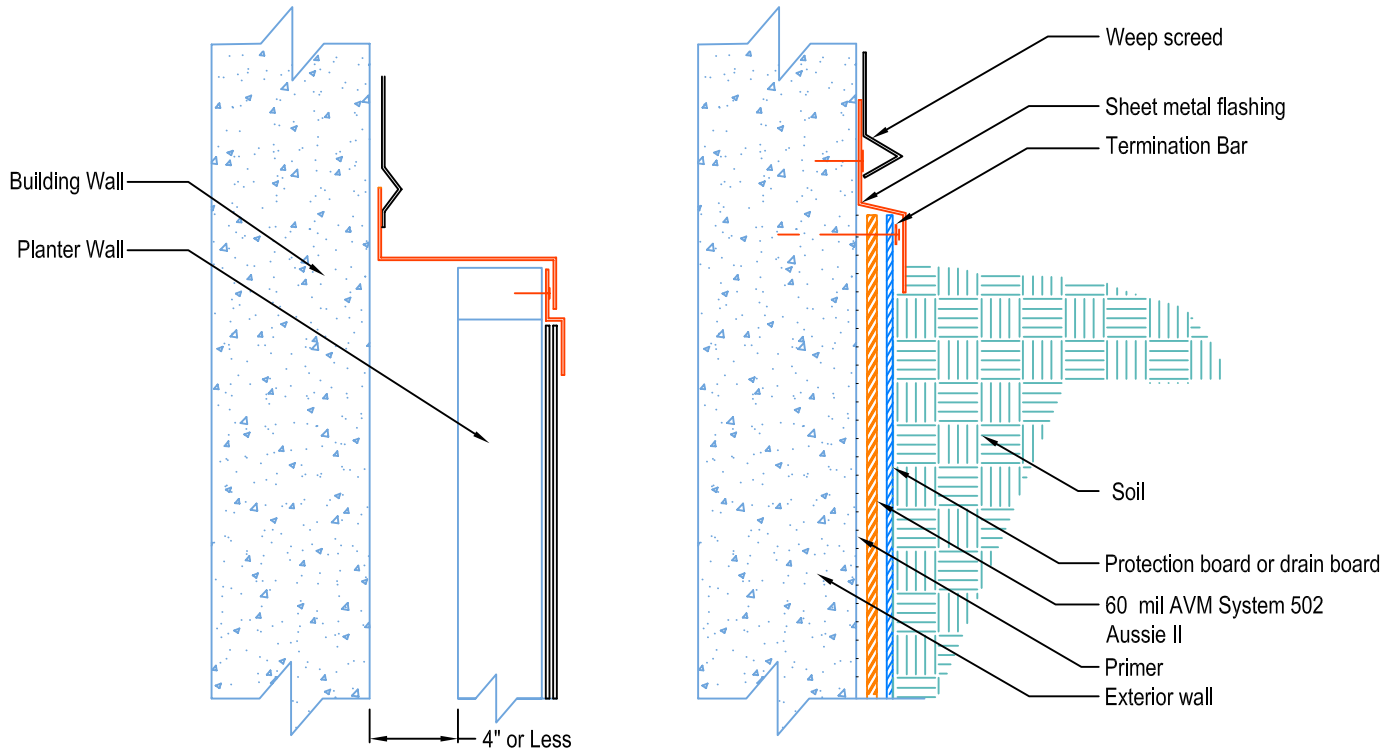


DETAIL # :
 AVM-502-6002-C
 AVM System 502
 Aussie II
 VIEW TYPE:
 Cut Sheet

Terminations
AVM System 502 Aussie II
 Fluid Applied Waterproofing



Notes:

1. Aussie II (AVM System 502) is a two-component, Water-Based Bitumen (Spray Applied) for Below-Grade, Lagging, Between-Slab, Planters, Roof-Gardens, Paver Systems and similar type Waterproofing.
2. For proper membrane thickness and appropriate protection and drainage, refer to AVM System 502, Aussie II's "Min Thickness Table"
3. Contact AVM if no drain board or protection board is specified.