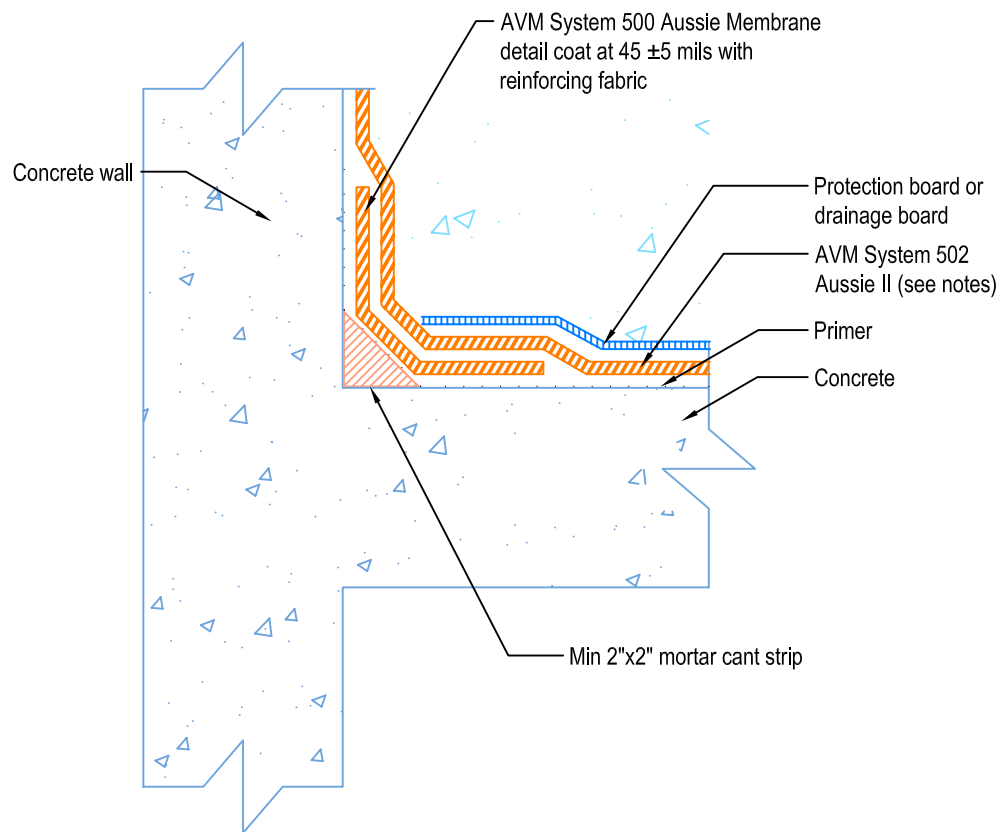


DETAIL # :
AVM-502-7502-C

AVM System 502
Aussie II

VIEW TYPE:
Cut Sheet

Transition Horizontal to Vertical
Topping Slab or Pavers
AVM System 502 Aussie II
Fluid Applied Waterproofing



Notes:

1. Aussie II (AVM System 502) is a two-component, Water-Based Bitumen (Spray Applied) for Below-Grade, Lagging, Between-Slab, Planters, Roof-Gardens, Paver Systems and similar type Waterproofing.
2. For proper membrane thickness and appropriate protection and drainage, refer to AVM System 502, Aussie II's "Min Thickness Table"
3. Contact AVM if no drain board or protection board is specified.