

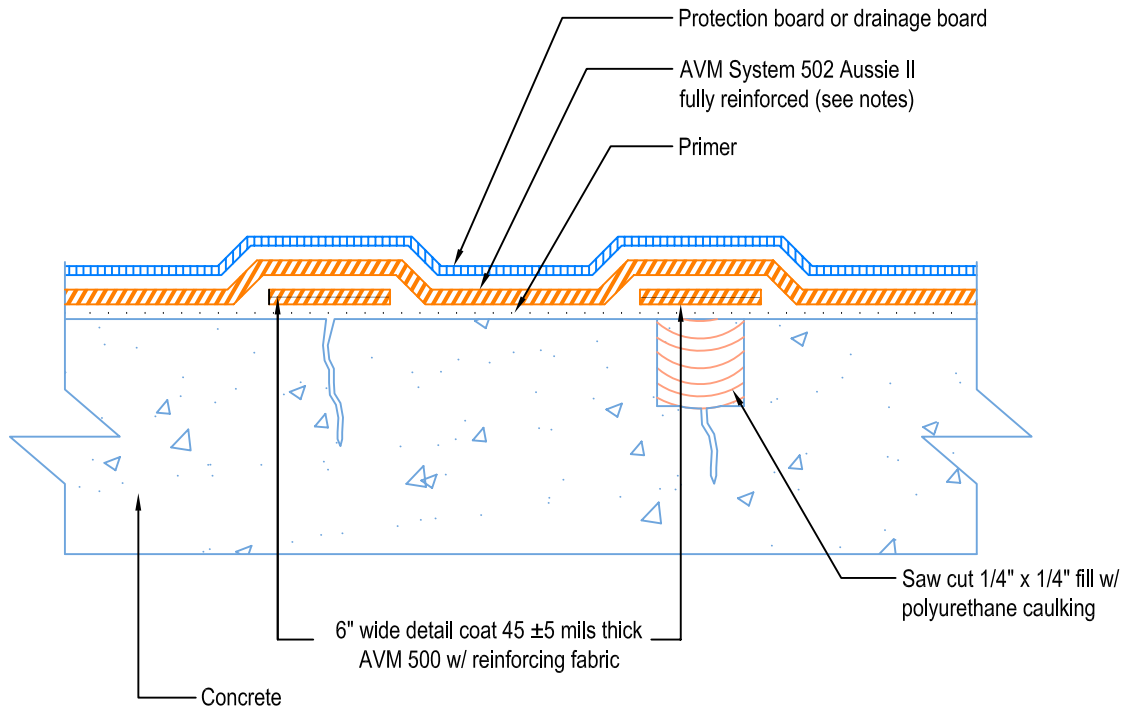
DETAIL # :  
 AVM-502-8002-C  
 AVM System 502  
 Aussie II  
 VIEW TYPE:  
 Cut Sheet

Crack Repair (Option 1)  
**AVM System 502 Aussie II**  
 Fluid Applied Waterproofing



Crack less than 1/16" wide

Crack greater than 1/16" wide



Notes:

1. Aussie II (AVM System 502) is a two-component, Water-Based Bitumen (Spray Applied) for Below-Grade, Lagging, Between-Slab, Planters, Roof-Gardens, Paver Systems and similar type Waterproofing.
2. For proper membrane thickness and appropriate protection and drainage, refer to AVM System 502, Aussie II's "Min Thickness Table"
3. Contact AVM if no drain board or protection board is specified.