



# AVM System 750 AVM Yellow

## Under-Tile Waterproofing and Anti-Fracture Membrane

Sections 071000 / 071400 / 071416 /  
093000 / 093400

Fluid-Applied Waterproofing

### Product Name

AVM System 750, AVM Yellow

### Manufactured by

AVM Industries, Inc.  
8245 Remmet Ave, Canoga Park, CA 91304  
888.414.1041 818.888.0050  
www.avmindustries.com

### Product Description

AVM YELLOW is a monolithic waterproofing membrane 40 Mils min thickness, consisting of a heavy duty water-based waterproofing paste. AVM YELLOW is designed to be used as a waterproofing and Anti-Fracture membrane for substrates which will have Tile, Brick, Slate, Pavers or other similar finished surfaces installed directly over it. (Thin-Set may be applied directly on top of the AVM YELLOW) This system is also designed to waterproof shower pans, counter-tops, etc.

### Where to Use

Use as a shower pan liner for showers, bathrooms, kitchens, ponds, wet rooms, etc. May also be used on new or existing concrete or plywood decks, over backer boards, cement boards and other similar substrates. May be used as a primary membrane over living spaces.

### Warranty

AVM Industries will warranty the system materials for a period of one (1) year in their original, sealed containers. AVM Industries will warranty the installed system for a period of five (5) years. A ten (10) year warranty is also available. For details, contact AVM Industries or consult with your applicator.

### Delivery, Storage, and Handling

- Delivery of all the AVM System 750 materials to the job site must be in their original sealed containers and bags, with manufacturer's name and label intact.
- Handle and store containers and bags in accordance with printed instructions.
- Store at temperatures between 50°F and 90°F. Do not store materials in direct sunlight or where they may be damaged by water or rain. Bags must be kept dry!
- Keep all materials out of the reach of children.
- If irritation occurs during use, liberally flush affected areas with water. If irritation continues, see a physician immediately.

### Project Conditions

Do not apply materials at temperatures below 50°F, or if precipitation is imminent, or above 90°F if applying in direct sun light. Do not apply materials anywhere at temperatures above 100°F.



### Surface Preparation

Must be in accordance with the proper ANSI specifications. All exterior and wet areas are to have proper slope to drains. All surfaces must be built to industry standards, structurally sound, clean, dry and free from contaminants that would prevent proper bonding. Concrete must be fully cured and not subject to hydrostatic pressure. Surfaces to be smooth and without any defects. All cracks in the concrete up to 1/8" should be pre-filled with membrane prior to application. Membrane should extend beyond both sides of the crack a minimum of the diagonal measurement of the tile + 3 inches. Gaps between plywood sheets and where they meet walls or drains should also be pre-filled with membrane. Do not use to bridge or cover over existing expansion joints. Cracks in excess of 1/8" should be treated as expansion joints. For expansion joint details, contact AVM Industries. Membrane must be covered with tile, AVM Protective Coating or other protective surfaces once cured. Mud-beds meeting TCA's standards must be used when applicable.

### System Application

Apply with brush, roller, (using a 1" roller cover), 3/16" V-notched trowel or airless sprayer. (Do not exceed 2200 PSI)

- Pre-coat: Pre-coat corners, floor to wall connections and other critical areas by applying AVM Yellow, 6 inches on either side and embedding AVM Mat 800 for reinforcement. Then apply a second coat of the AVM Yellow to sandwich in the mat.
- First Coat: Apply a continuous, even film with overlapping strokes. Apply 40-50 mils wet. Do not exceed 100 mils wet in a single coat application. After the first coat has dried about 1½ to 2 hours, check bubbles, pinholes and imperfections. Remove all bubbles and re-apply AVM Yellow. Fill pinholes with additional material.
- Second Coat: Apply a second coat at right angles to the first. Periodically check film thickness with a wet film gauge.

The combined dried coating thickness needs to be a minimum if 40 mils thickness. Contact technical support for proper application around drains.

(On Commercial, Exterior and over living spaces applications, Mat reinforcement might be required throughout the entire membrane. Contact technical support prior to beginning any such jobs for further recommendations)

Alternatively, a airless sprayer can be used. The sprayer should produce between 1900-2300 psi, with a flow rate of 1.0 to 1.5, gpm and have a tip orifice size of .025 to .029. Apply a continuous film with overlapping spray.

For exterior change of plane, embed a 6" wide strip of AVM mat 800 into the membrane. Many commercial waterproofing installations require reinforcing of interior change of plane. Contact technical support prior to beginning any commercial installation for review and recommendations.

### Preparation

(Optional, but highly recommended) AVM Crete 6200 - Scratch Coat (Over Concrete Substrates) or a 1 inch thick, reinforced mortar bed over plywood substrates. (Min 2000 PSI)

### Protective Coating

Optional Protective Layer: Apply the AVM Crete 6700 over the cured membrane at least 1/8 of an inch thick.

### Quality Control

- Visually inspect all coated surfaces to ensure a full and proper coating application, especially at corners, drainage scuppers and hard-to-reach areas.
- All unsatisfactory areas shall be repaired prior to final acceptance.

### Protection of Installed Work

- The completed section shall be protected from all pedestrian traffic for the first 24 hours after application and until the surface is sufficiently cured. (The amount of drying time may vary depending on temperature and humidity conditions) Typically, light foot traffic may resume after 4-6 hours.
- The completed section shall be protected from heavy pedestrian and wheeled traffic for the first 24 hours after application.

### Availability and Cost

Contact AVM Industries or your approved applicator for pricing and availability.

### Technical Services

Technical services are available by contacting our offices at: **888.414.1041** or **818.888.0050** or visit [www.avmindustries.com](http://www.avmindustries.com)

### System Specifications

See next page.

The following coverages are based on controlled tests. Actual coverages may vary.

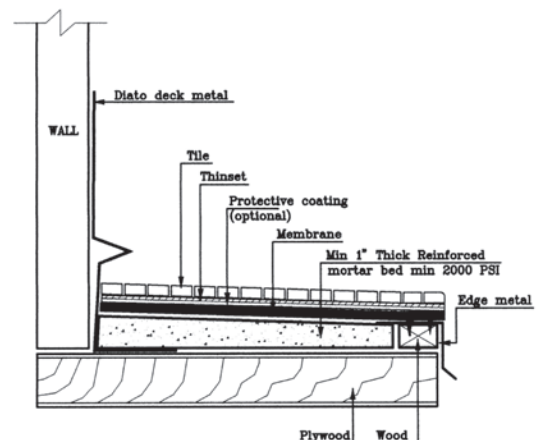
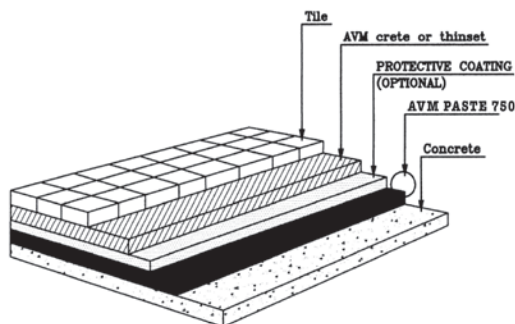
Materials	One Kit Makes	One Kit Covers at 1/16" Thick
AVM Crete 6700 - Protective Coating (Optional)	4 Gallons of Mixed Product	80 sq. ft. at 1/16" thick
Weight of 1 sq. ft. of Crete 6700 installed & cured		1 sq. ft. at 1/16" thick = -0.625 lbs.

Materials	Over Plywood	Over Concrete	Over Sheet Metal
AVM Primer 500 (optional)	200-300 sq. ft./gal.	200-300 sq. ft./gal.	200-300 sq. ft./gal.
AVM Yellow Paste	30-35 sq. ft./gal.	30-35 sq. ft./gal.	35-40 sq. ft./gal.
AVM Matt 800 (6" and 40")	Min. 2" overlaps	Allow 5%-10% waste	

Technical Data - AVM System 750	Over Concrete	Over Plywood
Fungus and Micro Organism Resistance	PASS	PASS
Seam Strength - ASTM D-751-00	PASS	PASS
Breaking Strength - ASTM D-751-2000	PASS	PASS
Dimensional Stability - ASTM D1204-1994	PASS	PASS
Waterproofness - ASTM D-4068-99	PASS	PASS
Shear Strength to Ceramic Tile and Cement Mortar after 100 Days Immersion - ASTM C-482-1996	PASS	PASS

General Data - AVM System 750	
Shelf Life: (Liquids)	One year in original unopened packaging.
Storage Conditions	Store dry at 50°-90°F. If frozen, discard
Cement Mixing Ratio	One 50 lb. bag Aggregate 200 to 1.0-1.25 gal additive 7700
Paste Color	Paste is Yellow when in the bucket and cures to Orange color
Additive Color	AVM Additive 7700 is Black
Protective Coating	AVM Crete 6700 is Dark Gray
Protective Coating Strength	AVM Crete 6700 achieves over 6000 PSI when cured, providing excellent protection and bonding

Item / Component	Packaging	Approx Shipping Weights	VOC
AVM Primer 500	1.0/2.0/5.0 gal. pails	8.9/17.8/44.0 lbs	15 Grams/Liter
AVM Paste 750	1.0/5.0 gal. pails	10.0/48.0 lbs	26 Grams/Liter
AVM Aggregate 200	50 lb. bag	50 lb. bag	
AVM Additive 7700	5.0 gal. pails	46.0 lbs	6 Grams/Liter
Mat 800 40" wide x 324 Ft. Long	1080 sq. ft	27 lbs.	
Mat 800 6" wide x 300 Ft. Long	150 sq. ft	3 lbs	



For a complete list of details in CAD or PDF, please visit our website at [www.avmindustries.com](http://www.avmindustries.com).

AVM Industries, Inc.  
8245 Remmet Ave, Canoga Park, CA 91304  
888.414.1041 818.888.0050

Quality Waterproofing Products



[www.avmindustries.com](http://www.avmindustries.com)