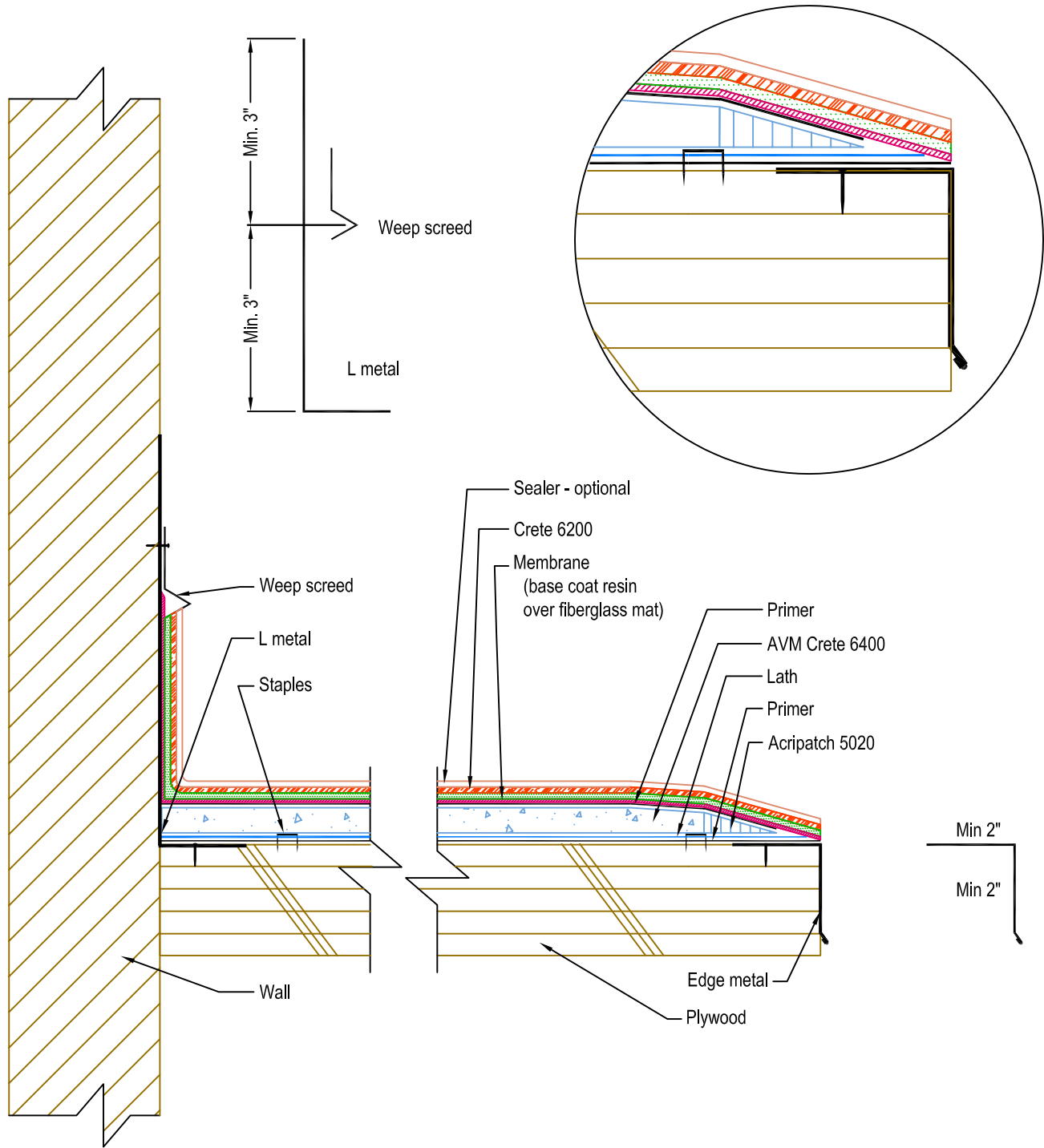


DETAIL # :	0100-FEC-502-P-CS
AVM System 100 Forevercoat	
VIEW TYPE:	Cut Sheet

# Forevercoat Assembly Over Plywood Substrate AVM System 100



- Note:**
- Extend membrane, Crete 6200 and optional sealer to edge of sheet metal flashing
  - Membrane to be bonded to sheet metal edge
  - Terminate acripatch at least 1" from edge