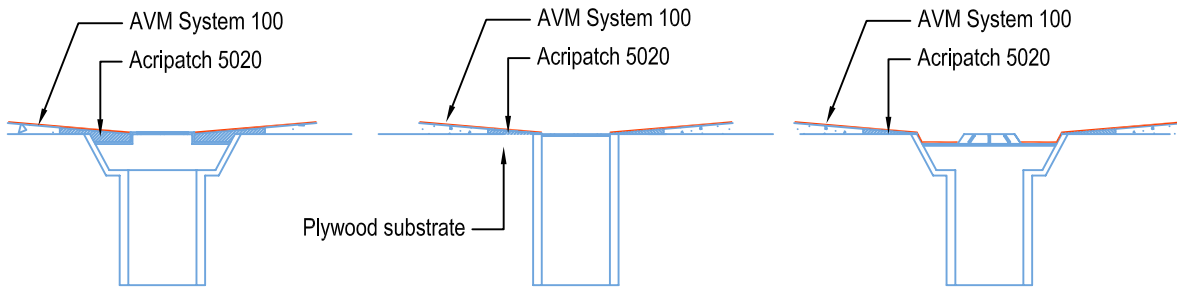
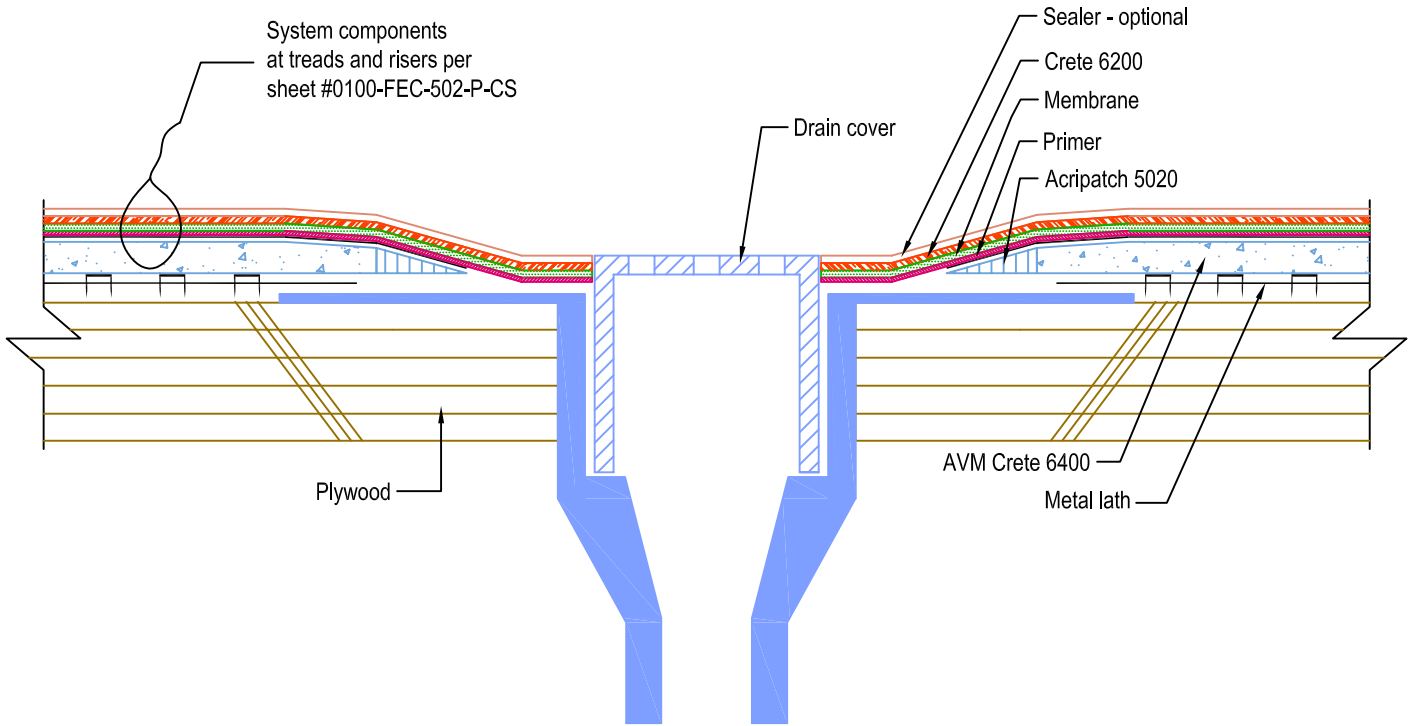


DETAIL # :	0100-FEC-752-P-CS
AVM System 100 Forevercoat	
VIEW TYPE:	Cut Sheet

# Drain Over Plywood Substrate AVM System 100 Forevercoat



Other acceptable area drain types

**Note:**

- Stop AVM Crete 6400 at least 2" before the drain opening leaving a min. of 2" exposed flange
- Use Acripatch 5020 to transition from top of AVM Crete to the flange
- Leave at least 1" of exposed flange surface all around the drain for direct membrane bonding