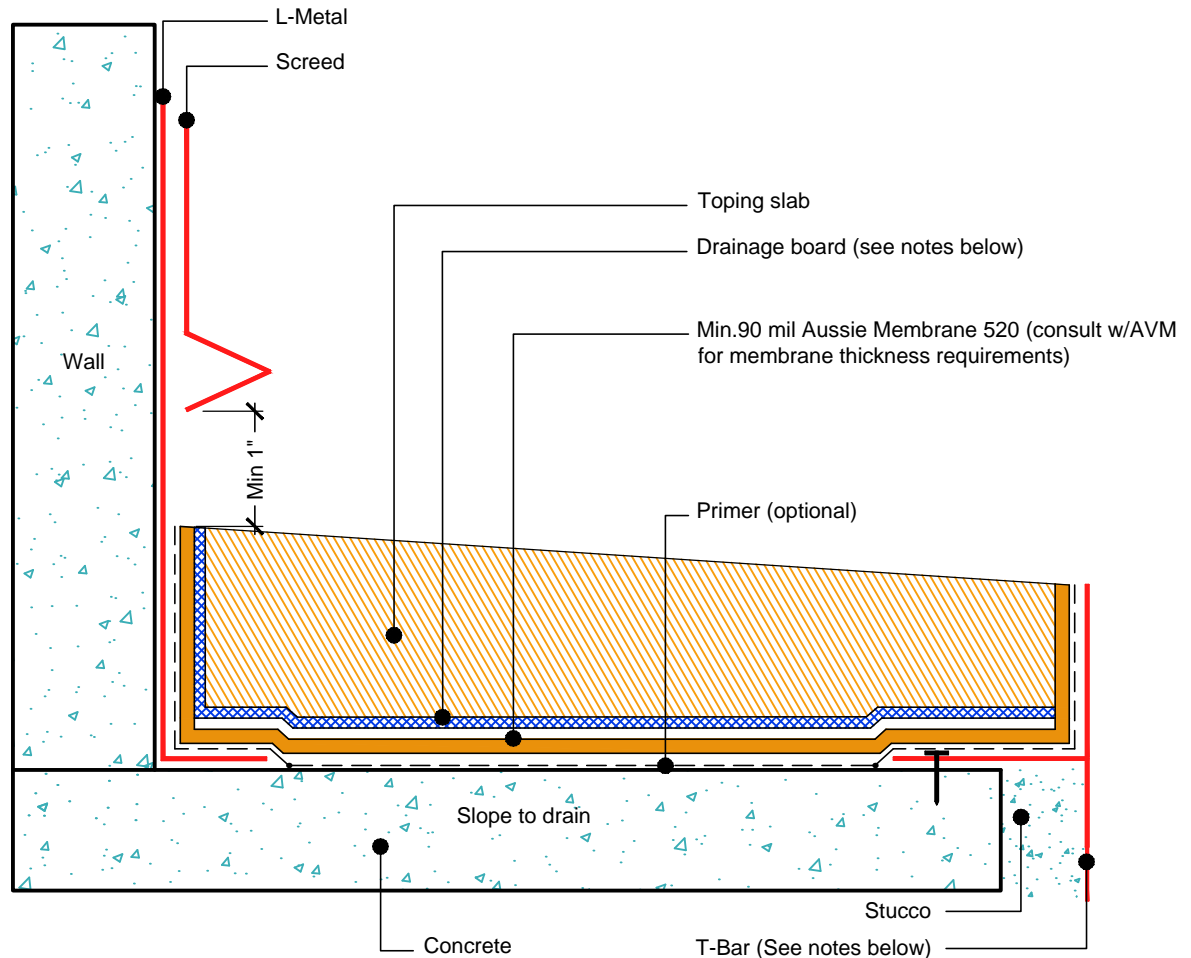


DETAIL #:
AVM-0520-2022-C

AVM SYSTEM 520

AUSSIE MEMBRANE 520

Topping Slab on Concrete Substrate
over AVM AUSSIE MEMBRANE 520
with Drain Board, Fluid Applied
Waterproofing (Medium Duty).



NOTES:

1. Aussie Membrane 520 is a Polyurethane liquid (Roller or Brush Applied) for Below-Grade, Between-Slab, Planters, Roof-Gardens and similar type Waterproofing.
2. For proper membrane thickness and appropriate protection and drainage, refer to AVM Aussie Membrane 520 "Min Thickness Table"
3. Contact AVM if no drain board or protection board is specified.
4. For drainage and protection on topping Slabs up to 4" thick for pedestrian applications, use AVM Drain Board 6000.
5. For drainage and protection on topping slabs over 4" thick or for vehicular applications, use AVM Drain Board 9000.
6. This assembly is for pedestrian traffic use only. For vehicular applications and other heavy loads, contact AVM for approval.
7. Reinforce the Aussie Membrane 520 with AVM Mat 800 at all corners, metal transitions, penetrations, gaps, drains, etc.
8. Mortar cant strip and detail coat at the cold joint may be replaced with other cold joint details with prior approval from AVM.
9. Many edge details are possible. All must allow for proper water evacuation. (None should trap water) Consult AVM for details.

AVM Industries, Inc.
8245 Remmet Ave, Canoga Park, CA 91304

Quality Waterproofing Products

888.414.1041 818.888.0050
www.avmindustries.com