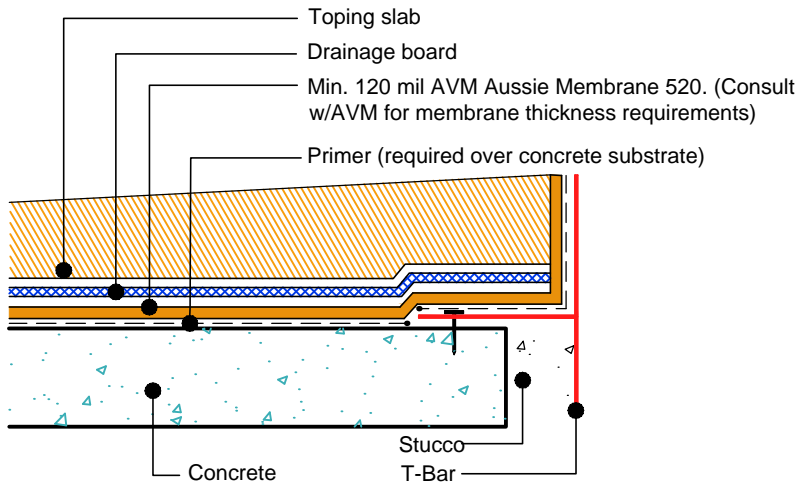


DETAIL #:
AVM-0520-2072-C

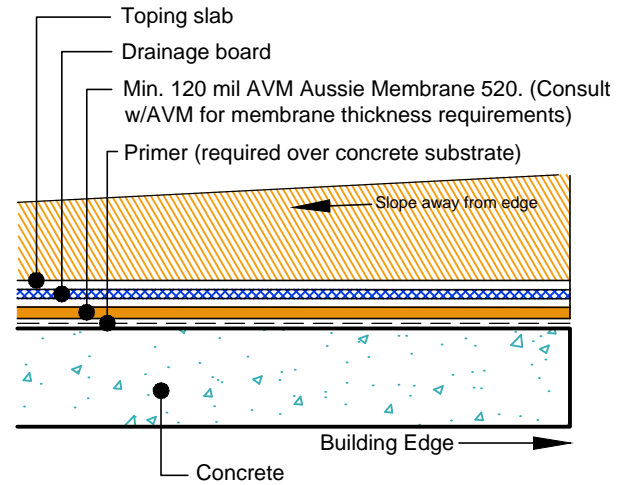
AVM SYSTEM 520

AUSSIE MEMBRANE 520

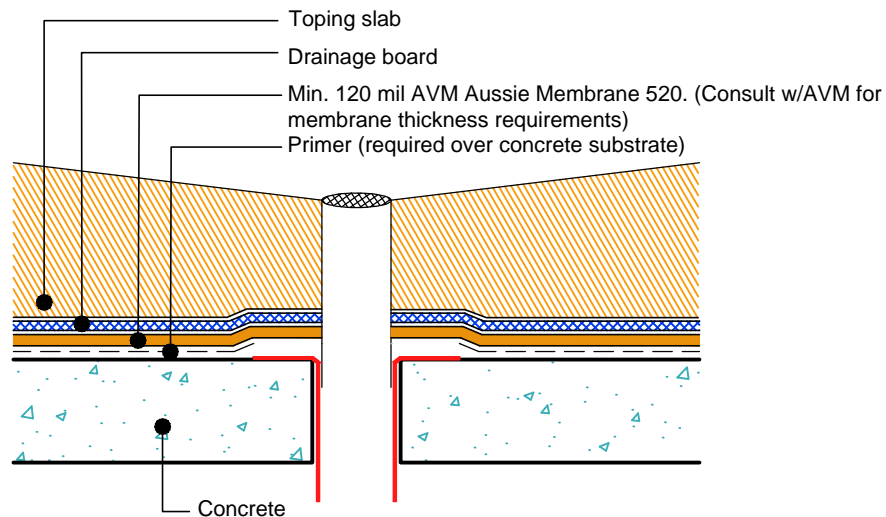
Other Edge and Drain Details Topping Slabs
Waterproofing on Concrete Substrates
AVM AUSSIE MEMBRANE 520
Fluid Applied Waterproofing. (Heavy Duty)



Slope Away from Edge Detail with Edge Metals
Heavy Duty



Slope Away from Edge Detail without Edge Metals
Heavy Duty



Drain Detail on Concrete
Heavy Duty

NOTES:

1. See drawing and notes on detail number AVM-520-2002-C for more information.
2. If water is to drain away from the edge into area floor drains, then edge metals do not require weep holes.
3. Reinforce the Aussie Membrane with AVM Mat 800 at all corners, metal transitions, penetrations, gaps, drains, etc.
4. A 2-part concrete drain with a bowl and a flange and built-in weep holes should be used. (Consult AVM for proper drain selection)