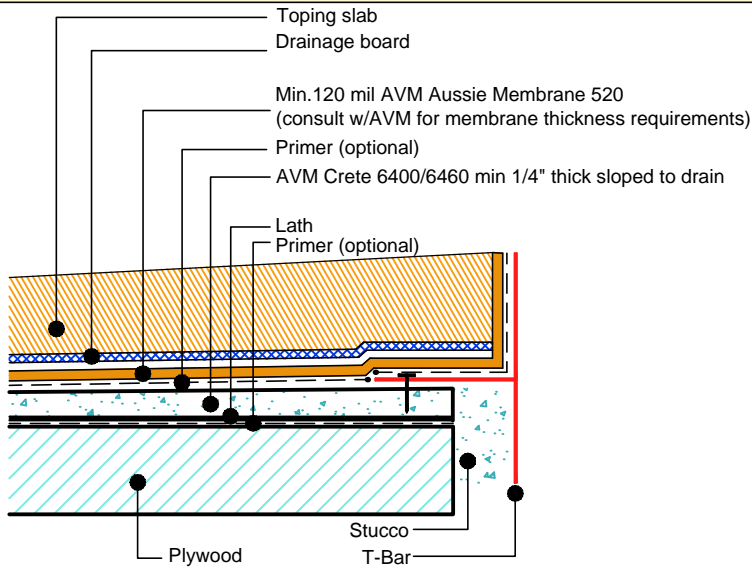


DETAIL #:
AVM-0520-2572-P

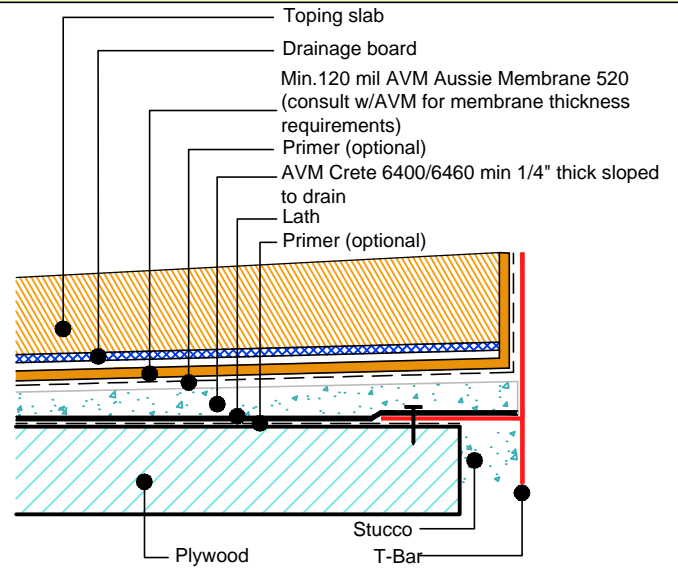
AVM SYSTEM 520

AUSSIE MEMBRANE 520

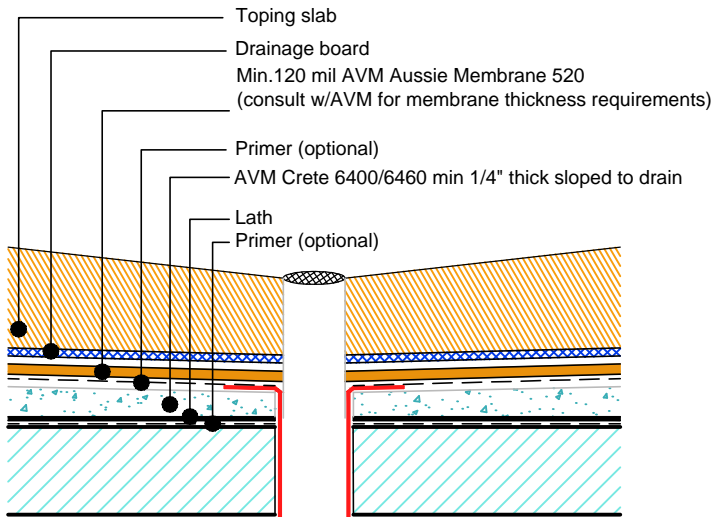
Other Edge and Drain Details Topping Slabs
Waterproofing on Plywood Substrates
AVM AUSSIE MEMBRANE 520
Fluid Applied Waterproofing (Heavy Duty)



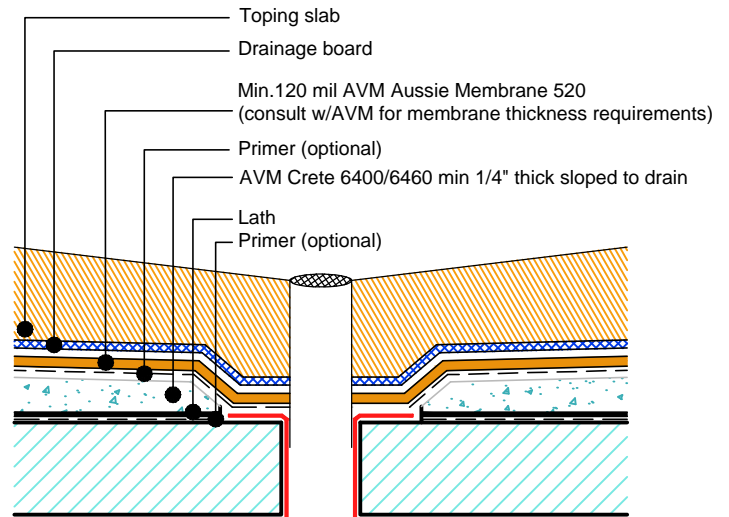
Slope Away from Edge Detail
Concrete Under Metals



Slope Away from Edge Detail
Concrete Over Metals



Drain Flange Sitting on
Crete 6400/6460



Drain Flange Sitting on
Plywood Substrate

NOTES:

1. See drawing and notes on detail number AVM-520-2502-P for more information.
2. If water is to drain away from the edge into area floor drains, then edge metals do not require weep holes.
3. Reinforce the Aussie Membrane with AVM Mat 800 at all corners, metal transitions, penetrations, gaps, drains, etc.