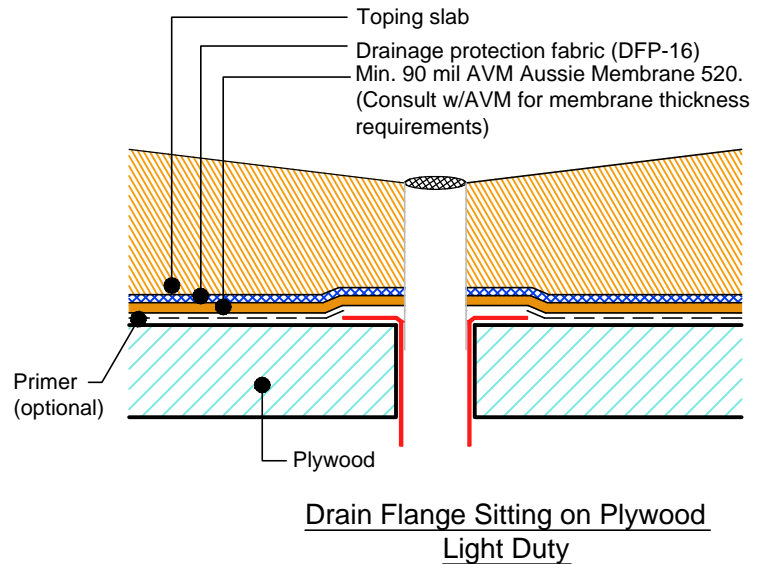
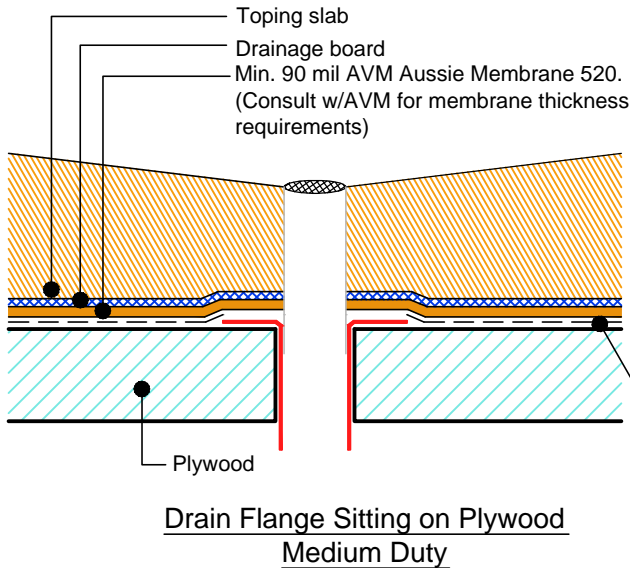
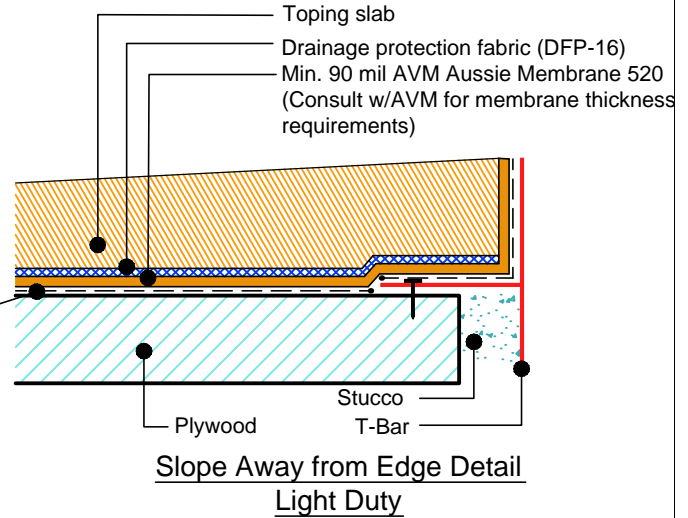
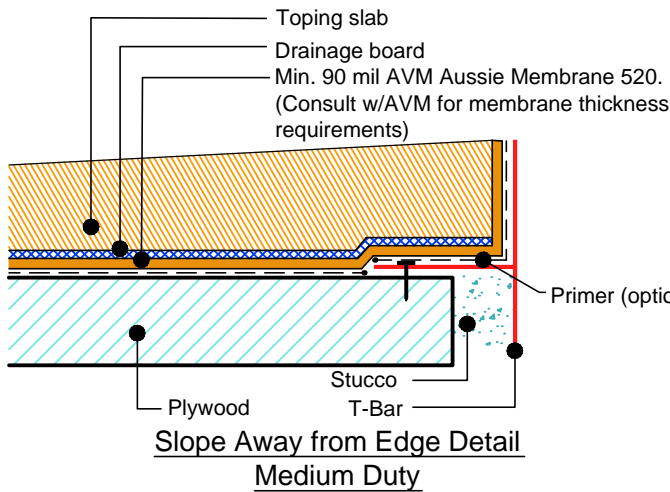


DETAIL #:  
AVM-0520-2574-P

AVM SYSTEM 520

AUSSIE MEMBRANE 520

Other Edge and Drain Details Topping  
Slabs Waterproofing on Plywood  
Substrates.  
AVM AUSSIE MEMBRANE 520  
Fluid Applied Waterproofing (Medium  
and Light Duty)



NOTES:

1. See drawing and notes on detail number AVM-520-2522-P for more information on medium duty applications.
2. See drawing and notes on detail number AVM-520-2542-P for more information on light duty applications.
3. If water is to drain away from the edge into area floor drains, then edge metals do not require weep holes.
4. Reinforce the Aussie Membrane with AVM Mat 800 at all corners, metal transitions, penetrations, gaps, drains, etc.