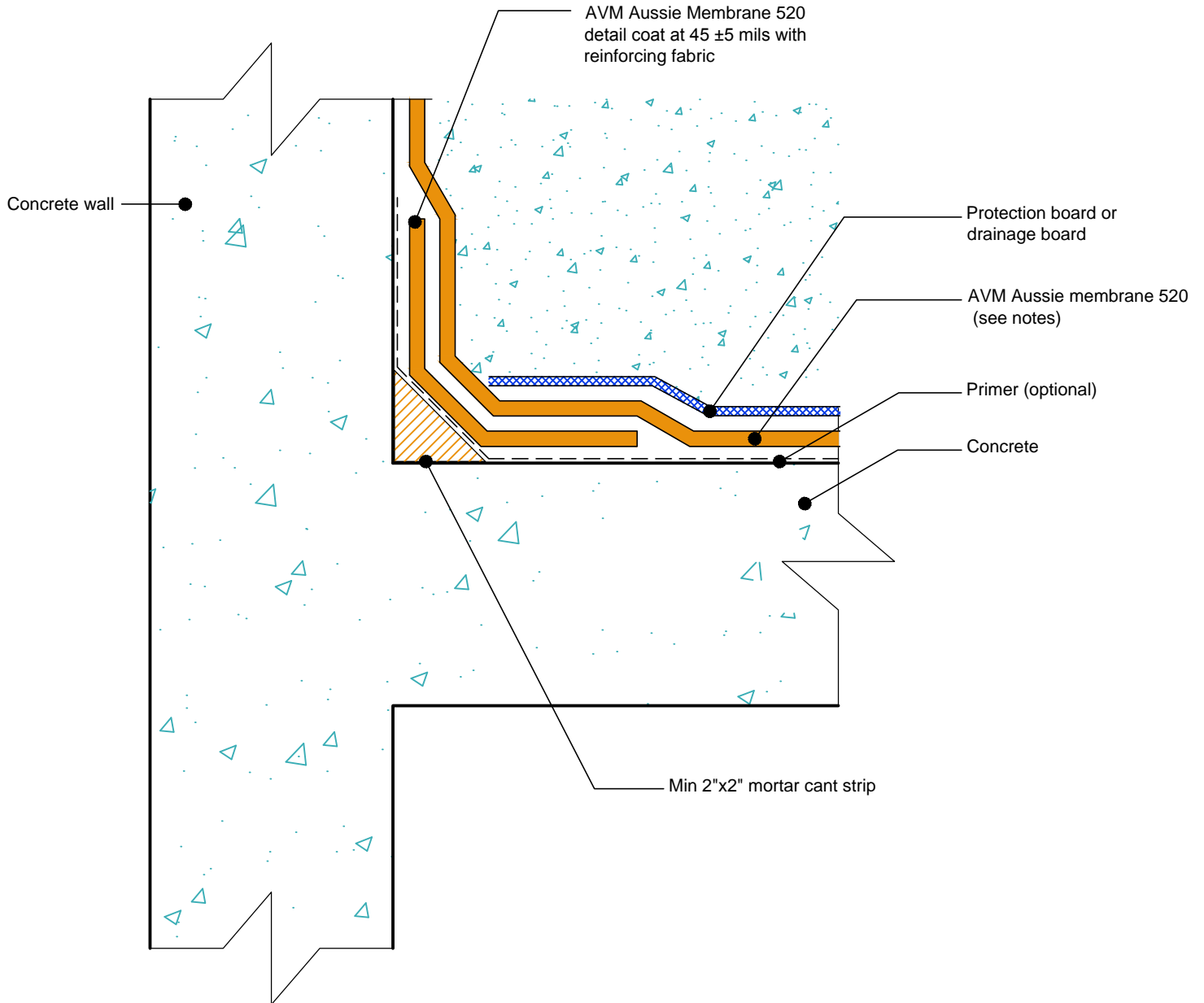


DETAIL #:
AVM-0520-7502-C

AVM SYSTEM 520

AUSSIE MEMBRANE 520

Transition Horizontal to Vertical
Topping Slab or Pavers
AVM AUSSIE MEMBRANE 520
Fluid Applied Waterproofing.



- NOTES:**
1. Aussie Membrane 520 is a Polyurethane liquid (Roller or Brush Applied) for Below-Grade, Between-Slab, Planters, Roof-Gardens and similar type Waterproofing.
 2. For proper membrane thickness and appropriate protection and drainage, refer to AVM Aussie Membrane 520 "Min Thickness Table"
 3. Contact AVM if no drain board or protection board is specified.
 4. Mortar cant strip and detail coat at the cold joint may be replaced with other cold joint details with prior approval from AVM.