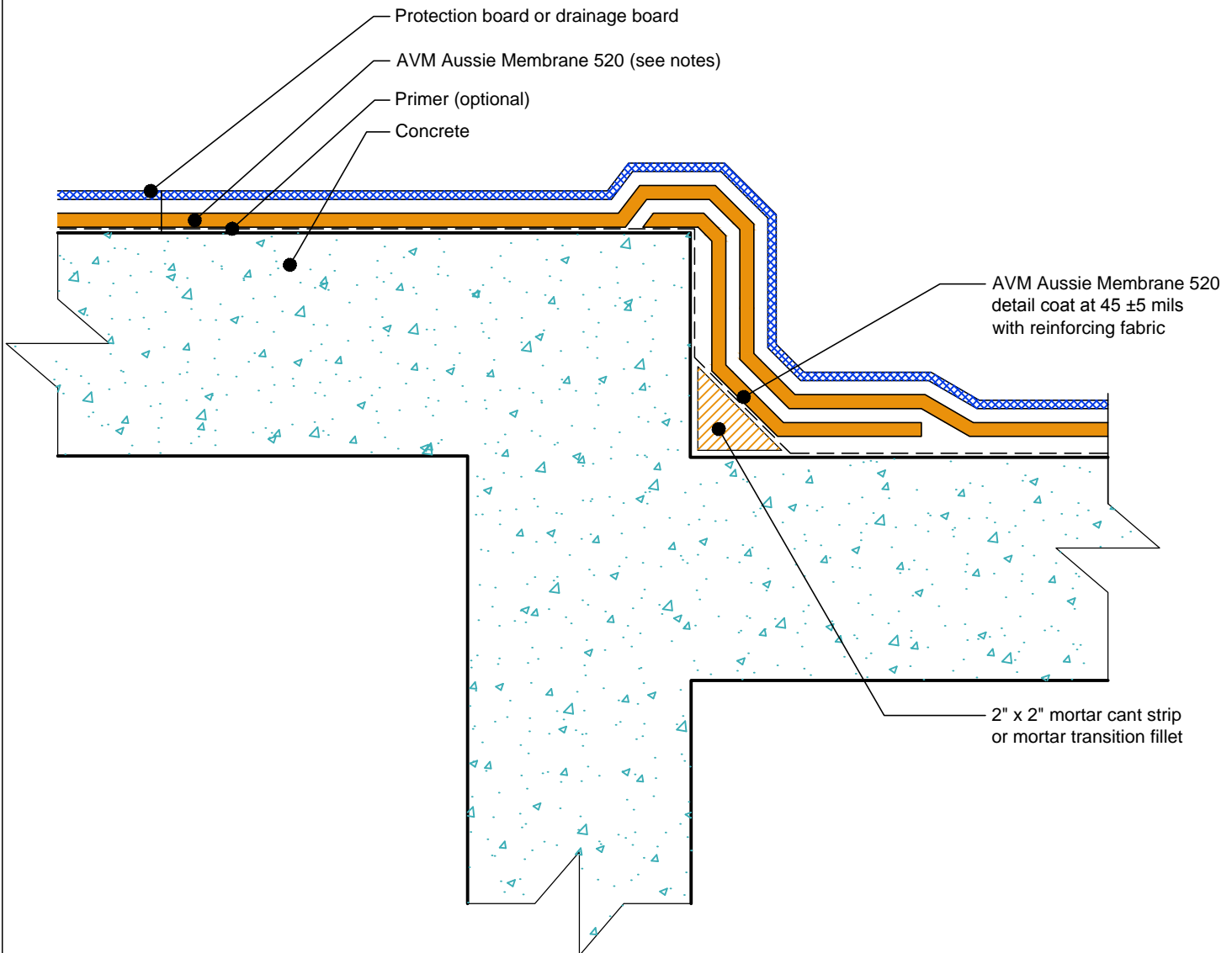


DETAIL #:  
AVM-0520-7504-C

AVM SYSTEM 520

AUSSIE MEMBRANE 520

Transition At Depressed Slab  
AVM AUSSIE MEMBRANE 520  
Fluid Applied Waterproofing.



**NOTES:**

1. Aussie Membrane 520 is a Polyurethane liquid (Roller or Brush Applied) for Below-Grade, Between-Slab, Planters, Roof-Gardens and similar type Waterproofing.
2. For proper membrane thickness and appropriate protection and drainage, refer to AVM Aussie Membrane 520 "Min Thickness Table"
3. Contact AVM if no drain board or protection board is specified.
4. Mortar cant strip and detail coat at the cold joint may be replaced with other cold joint details with prior approval from AVM.

AVM Industries, Inc.  
8245 Remmet Ave, Canoga Park, CA 91304

Quality Waterproofing Products

888.414.1041 818.888.0050  
www.avmindustries.com