

DETAIL #:
AVM-0520-8002-C

AVM SYSTEM 520

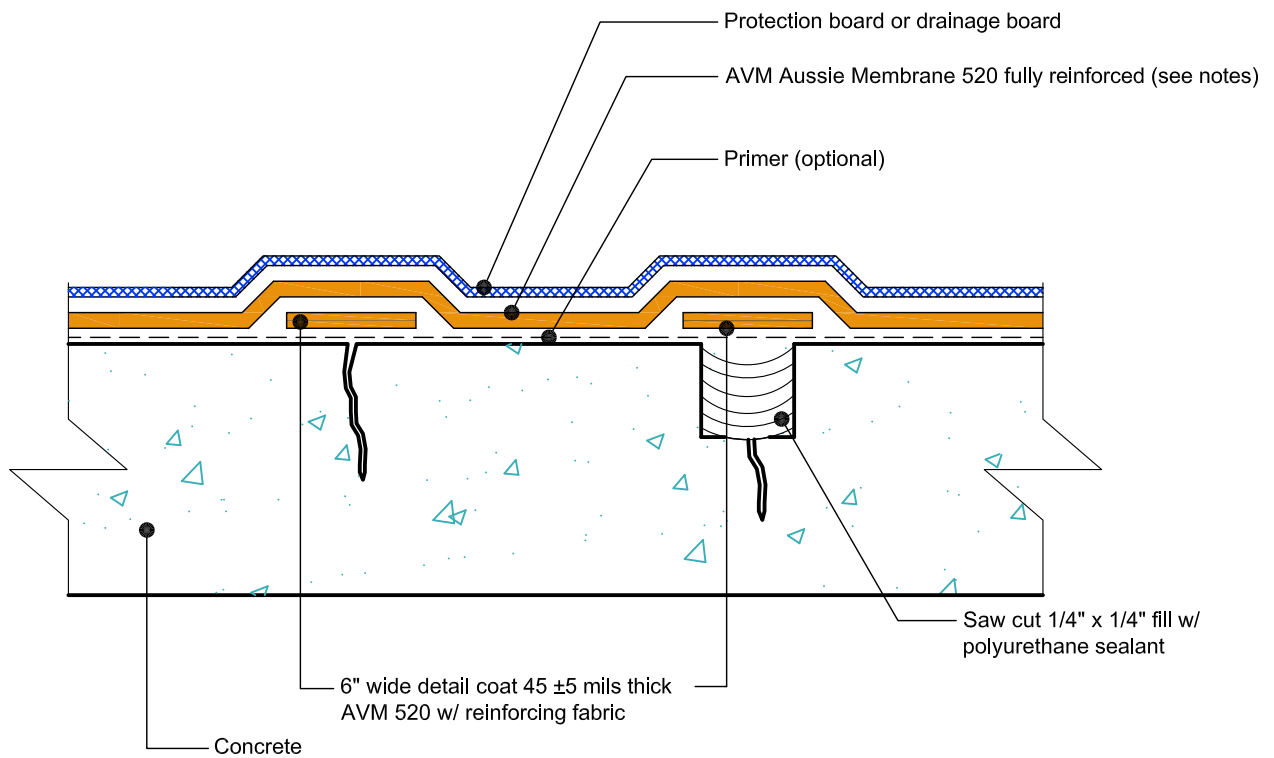
AUSSIE MEMBRANE 520

Crack Repair (Option 1)
AVM AUSSIE MEMBRANE 520
Fluid Applied Waterproofing.



Crack less than 1/16" wide

Crack greater than 1/16" wide



NOTES:

1. Aussie Membrane 520 is a Polyurethane liquid (Roller or Brush Applied) for Below-Grade, Between-Slab, Planters, Roof-Gardens and similar type Waterproofing.
2. For proper membrane thickness and appropriate protection and drainage, refer to AVM Aussie Membrane 520 "Min Thickness Table"
3. Contact AVM if no drain board or protection board is specified.