



AVM Aussie Mate 580-AL

UV Stable Heavy Duty 60 Mil Bellow Grade Bituminous Waterproofing Sheet Membrane, with Aluminum Backing

Product Name

AVM AUSSIE MATE 580-AL

Manufactured by

AVM Industries, Inc.
8245 Remmet Ave, Canoga Park, CA 91304
888.414.1041 818.888.0050
www.avmindustries.com

Product Description

The **AVM Aussie Mate 580-AL** is a 60-mil heavy duty bituminous waterproofing sheet membrane with an aluminum protection layer. **AVM Aussie Mate 580-AL** exhibits excellent adhesion, elongation and recovery properties. Unlike other sheet membranes, **AVM Aussie Mate 580-AL** can be exposed to U.V. up to 90 days!

Where to Use

Retaining Walls: Waterproof below-grade, concrete, block walls, basements, etc.

Planters: Waterproof planters and other landscaping features.

In-between slab waterproofing: To provide a sandwich membrane in-between two concrete slabs or over wood decks that will receive a topping slab. It may also be used as an under-tile membrane when a mud-bed or thick-set type assembly is required.

Important Note: Prior approval and review of details by AVM is required on all jobs where this membrane will be installed directly over plywood.

Warranty

AVM Industries will warranty the installed membrane for a period of five (5) years. Ten (10) year warranties are also available. For complete warranty details, contact AVM Industries or consult with your applicator.

Delivery, Storage, and Handling

- a. Delivery of all the **AVM System 580-AL** materials to the job site must be in their original sealed packaging, with manufacturer's name and label intact.
- b. Handle and store containers in accordance with printed instructions.
- c. Store at temperatures between 50°F and 90°F. Do not store materials in direct sunlight or where they may be damaged by water or rain.
- d. Failure to comply with the recommended storage conditions may result in premature deterioration of the product. For specific storage advice, please contact AVM Industries and/or its representatives.
- e. Keep all materials out of the reach of children.
- f. If irritation occurs during use, liberally flush affected areas with water. If irritation continues, see a physician immediately.

Project Conditions

1. All surfaces to which the **Aussie Mate 580-AL** is applied must be sound and stable, with an even finish and free from dust, loose debris, grease, curing agents, etc. If necessary, apply a parge coat using AVM Crete 6200.
2. The **Aussie Mate 580-AL** may be applied to damp but not waterlogged surfaces (Green Concrete) with the appropriate approved Adhesive.
3. Do not apply materials at temperatures below 40°F and falling or if precipitation is imminent. Do not apply materials in direct sunlight at temperatures above 100°F or rising.
4. Warn personnel against hazards of materials to skin and eyes. Note other hazardous conditions on the job that might require special protective gear and or any other special protective or safety procedures.
5. Protect adjacent surfaces which could be damaged during the application procedure.
6. This system must not be used to cover Expansion Joints.

System Application

Read the **AVM System 580-AL** Installation Instructions Prior to Installation. Application instructions vary based on type of application and the type of surfaces it's being applied to. For specific application procedures, refer to, or download the appropriate installation instructions. (For Retaining Walls, refer to the "Retaining Walls Installation Instructions". For Planters, refer to the "Planters Installation Instructions", etc.)

Basic installation procedures are also provided in this "Technical Data Sheet" for each type of installation. For a complete/comprehensive set of instructions, however, please refer to the "Installation Instructions" documents.

Quality Control

- a. Visually inspect all surfaces to ensure full and proper adhesion, especially at corners, seams, drains, footings and other hard-to-reach areas.
- b. All unsatisfactory areas shall be repaired prior to final acceptance.

Protection of Installed Work

Always protect the waterproofing from possible damage. Use AVM Drainage Boards or AVM Approved Protective Panels.

Availability and Cost

Contact AVM Industries or your approved applicator for pricing and availability.

Technical Services

Technical services are available by contacting our offices at: **888.414.1041** or **818.888.0050** or visit **www.avmindustries.com**

System Specifications

Test method: GB23457-2009

No.	Descriptions	Standard	Test Results	Pass/Fail	
1	Tensile Property	Tensile Strength / (N/50mm): End / Cross Section	≥ 150 / ≥ 150	171 / 239	Pass
		Maximum Tensile Force %: End / Cross Section	≥ 30% / ≥ 30%	31% / 58%	Pass
2	Tear Strength /N ≥	≥ 12 / ≥ 12	14 / 12	Pass	
3	Heat Resistance	158°F for 2 hours, no sag, displacement, or dripping	No displacement sag or dripping	Pass	
4	Low Temperature Flexibility at 5° F	No Cracking	No Cracking	Pass	
5	Water Permeability	0.3 MPa, for 2 hours: Impermeable	Impermeable	Pass	
6	Peel strength between membranes (N/mm) ≥	No Treatment	≥ 1.0	1.8	Pass
		Heat Treatment	≥ 1.0	1.6	Pass
	Oil Permeability pcs ≤	≤ 2	1	Pass	
	Consistent Adhesion min ≥	≥ 15	60	Pass	
	Peel strength between membranes and concrete (N/mm) ≥	No Treatment	≥ 2.0	2.1	Pass
		After Heat Aging	≥ 1.5	1.6	Pass
7	Heat Aging 158°F/168 hours)	Tensile Retention End / Cross Section	≥ 90% / ≥ 90%	64% / 93%	Pass
		Elongation Retention: End / Cross Section	≥ 80%	92% / 92%	Pass
		Low Temperature Flexibility	@ 9°F / No Cracking	No Cracking	Pass
8	Heat Stability	Appearance	No bubbles, sag or flow	No bubbles, sag or flow	Pass
		Dimensional Variation: End / Cross Section	≤ 2%	0.1% / 0.2%	Pass

Item/Component	Packaging	Approx Shipping Weights	Qty per Pallet	VOC
AUSSIE MATE 580-AL 60-mil	3.28'x65.6' Roll (215 sq.ft.)	85.0 Pounds (38.7 Kg) / Roll	25 Rolls/Pallet	N/A

For a complete list of details in CAD or PDF, please visit our website at www.avmindustries.com

AVM Industries, Inc.
8245 Remmet Ave, Canoga Park, CA 91304
888.414.1041 818.888.0050

Quality Waterproofing Products



www.avmindustries.com

TECHNICAL DATA SHEET

Sections - 071000 / 071300 / 071313 / 071326 / 071352

AVM Aussie Mate 580-AL

UV Stable Heavy Duty 60 Mil Bellow Grade Bituminous Waterproofing Sheet Membrane, with Aluminum Backing

Product Name

AVM AUSSIE MATE 580-AL

Manufactured by

AVM Industries, Inc. 8245 Remmet Ave, Canoga Park, CA 91304

Tel: 818.888-0050

Fax: 818.888.0050

Website: www.avmindustries.com

Product Description

The AVM AUSSIE MATE 580-AL is a UV stable, 60-mil heavy duty bituminous waterproofing sheet membrane with an aluminum protection layer. AVM AUSSIE MATE 580-AL exhibits excellent adhesion, elongation and recovery properties. Unlike other sheet membranes, AUSSIE MATE 580-AL can be exposed to U.V. up to 90 days!

Where to Use

Retaining Walls: Waterproof below-grade, concrete, block walls, basements, etc.

Planters: Waterproof planters and other landscaping features.

In-between slab waterproofing: To provide a sandwich membrane in-between two concrete slabs or over wood decks that will receive a topping slab. It may also be used as an under-tile membrane when a mud-bed or thick-set type assembly is required.

Important Note: *Prior approval and review of details by AVM is required on all jobs where this membrane will be installed directly over plywood.*

Warranty

AVM Industries will warranty the installed membrane for a period of five (5) years. Ten (10) year warranties are also available. For complete warranty details, contact AVM Industries or consult with your applicator.

Delivery, Storage, and Handling

- a. Delivery of all the AVM System 580-AL materials to the job site must be in their original sealed packaging, with manufacturer's name and label intact.
- b. Handle and store containers in accordance with printed instructions.
- c. Store at temperatures between 50°F and 90°F. Do not store materials in direct sunlight or where they may be damaged by water or rain.
- d. Failure to comply with the recommended storage conditions may result in premature deterioration of the product. For specific storage advice, please contact AVM Industries and/or its representatives.
- e. Keep all materials out of the reach of children.
- f. If irritation occurs during use, liberally flush affected areas with water. If irritation continues, see a physician immediately.

Project Conditions

1. All surfaces to which the AUSSIE MATE 580-AL is applied must be sound and stable, with an even finish and free from dust, loose debris, grease, curing agents, etc. If necessary, apply a parge coat using AVM Crete 6200.
2. The AUSSIE MATE 580-AL may be applied to damp but not waterlogged surfaces (Green Concrete) with the appropriate approved adhesive.
3. Do not apply materials at temperatures below 40°F and falling or if precipitation is imminent. Do not apply materials in direct sunlight at temperatures above 100°F or rising.
4. Warn personnel against hazards of materials to skin and eyes. Note other hazardous conditions on the job that might require special protective gear and or any other special protective or safety procedures.
5. Protect adjacent surfaces which could be damaged during the application procedure.
6. This system must not be used to cover Expansion Joints.

System Application

Read the AVM System 580-AL Installation Instructions Prior to Installation. Application instructions vary based on type of application and the type of surfaces it's being applied to. For specific application procedures, refer to, or download the appropriate installation instructions. (For Retaining Walls, refer to the "Retaining Walls Installation Instructions". For Planters, refer to the "Planters Installation Instructions", etc.)

Basic installation procedures are also provided in this "Technical Data Sheet" for each type of installation. For a complete/comprehensive set of instructions, however, please refer to the "Installation Instructions" documents.

Quality Control

- a. Visually inspect all surfaces to ensure full and proper adhesion, especially at corners, seams, drains, footings and other hard-to-reach areas.
- b. All unsatisfactory areas shall be repaired prior to final acceptance.

Protection of Installed Work

Always protect the waterproofing from possible damage. Use AVM Drainage Boards or AVM Approved Protective Panels.

Availability and Cost

Contact AVM Industries or your approved applicator for pricing and availability.

Technical Services

Technical services are available by contacting our offices at: **888.414.1041** or **818.888.0050** or visit **www.avmindustries.com**

System Specifications

See next page.

Test method: GB/23457-2009

No.	Descriptions		Standard	Test Results	Pass/Fail
1	Tensile Property	Tensile Strength / (N/50mm): End / Cross Section	≥ 150 / ≥ 150	171 / 239	Pass
		Maximum Tensile Force %: End / Cross Section	≥ 30% / ≥ 30%	31% / 58%	Pass
2	Tear Strength, N: End / Cross Section		≥ 12 / ≥ 12	14 / 12	Pass
3	Heat Resistance		158°F for 2 hours, no sag, displacement, or dripping	No displacement sag or dripping	Pass
4	Low Temperature Flexibility at 5° F		No Cracking	No Cracking	Pass
5	Water Permeability		0.3 MPa, for 2 hours: Impermeable	Impermeable	Pass
6	Peel strength between membranes (N/mm)	No Treatment	≥ 1.0	1.8	Pass
		Heat Treatment	≥ 1.0	1.6	Pass
	Oil Permeability pcs		≤ 2	1	Pass
	Consistent Adhesion min		≥ 15	60	Pass
	Peel strength between membranes and concrete (N/mm)	No Treatment	≥ 2.0	2.1	Pass
		After Heat Aging	≥ 1.5	1.6	Pass
7	Heat Aging 158°F/168 hours)	Tensile Retention End / Cross Section	≥ 90% / ≥ 90%	64% / 93%	Pass
		Elongation Retention: End / Cross Section	≥ 80%	92% / 92%	Pass
		Low Temperature Flexibility	@ 9°F / No Cracking	No Cracking	Pass
8	Heat Stability	Appearance	No bubbles, sag or flow	No bubbles, sag or flow	Pass
		Dimensional Variation: End / Cross Section	≤ 2%	0.1% / 0.2%	Pass

Item/Component	Packaging	Approx Shipping Weights	Qty per Pallet	VOC
AUSSIE MATE 580-AL 60-mil	3.28'x65.6' Roll (215 sq.ft.)	85.0 lbs. (38.7 KG) / Roll	25 Rolls/Pallet	N/A

For a complete list of details in CAD or PDF, please visit our website at www.avmindustries.com

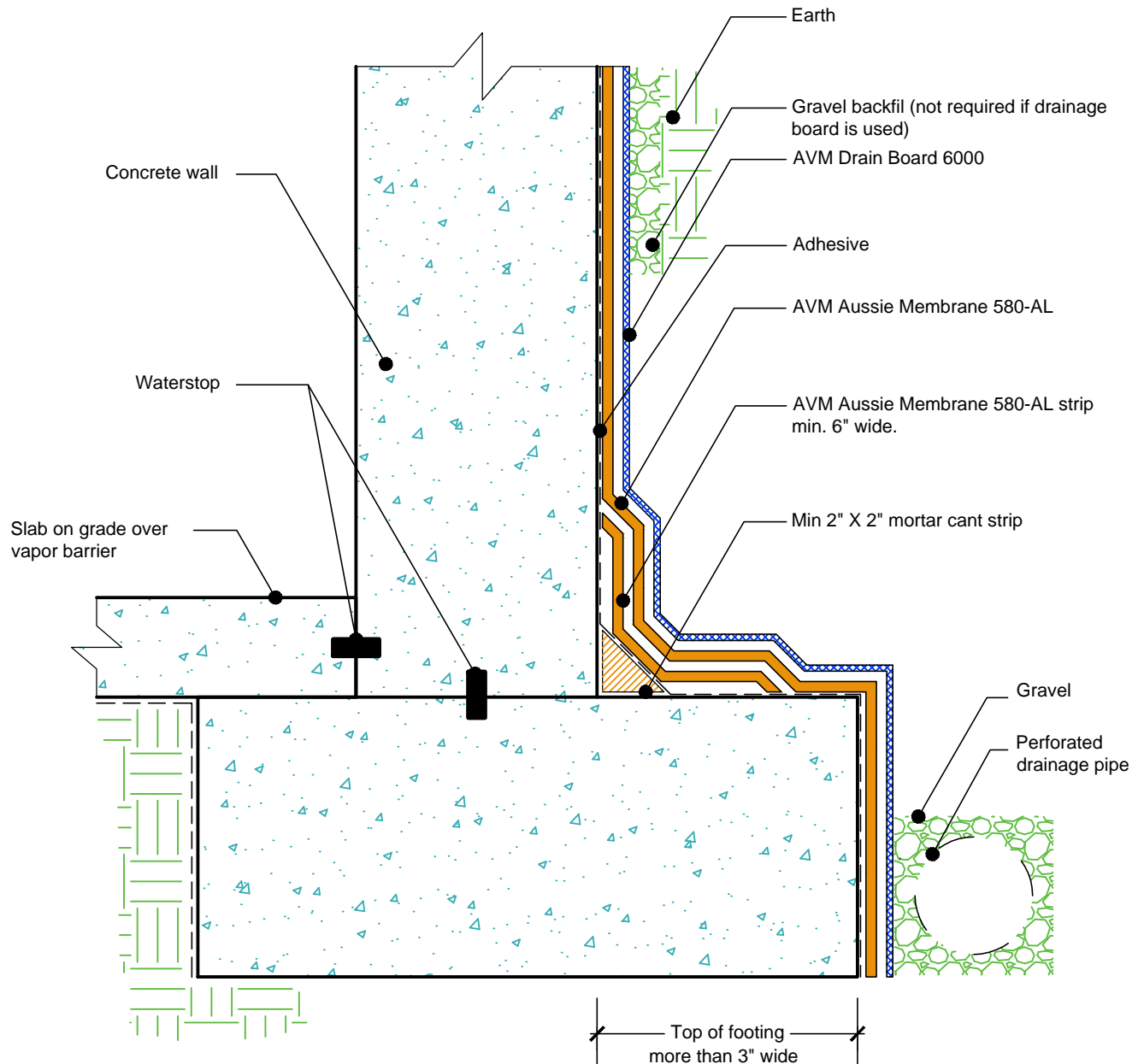
No.	Descriptions		Results
1	Tensile Property	Tensile Strength / (N/50mm) \geq	150
		Elongation at Maximum Tensile Force \geq	30%
2	Tear Strength /N \geq		12
3	Heat Resistance		158°F for 2 hours, no displacement, sag or dripping
4	Low Temperature Flexibility at 5° F		No Cracking
5	Water Permeability		0.3 MPa, 120 Minutes
6	Peel strength between membranes \geq	No Treatment	145 PSI
		Heat Treatment	145 PSI
	Oil Permeability pcs \leq		2
	Consistent Adhesion min \geq		15
	Peel strength between membranes and concrete \geq	No Treatment	290 PSI
		After Heat Aging	217 PSI
7	Heat Aging 158°F/168 hours)	Tensile Retention \geq	90%
		Elongation Retention \geq	80%
		Low Temperature Flexibility	@ 9°F / No Cracking
8	Heat Stability	Appearance	No bubbles, sag or flow
		Dimensional Variation \leq	2% / No Cracking

DETAIL #:
AVM-0580-AL-0002-C

AVM SYSTEM 580-AL

AUSSIE MATE® 580-AL

Retaining Walls
Slab on Grade at Top of Footing
AVM AUSSIE MATE® 580-AL
Bituminous Sheet Waterproofing.



NOTES:

1. Aussie Membrane 580-AL is a UV stable, 60-mil heavy duty bituminous waterproofing sheet membrane with an aluminum protection layer for Below-Grade waterproofing applications.
2. For appropriate drainage/protection, use AVM Drain Board 6000.
3. Contact AVM if no drain board or protection board is specified.
4. Only AVM approved liquid adhesive may be used. (water-based and solvent-based adhesives are available)
5. AVM's "Bottom Drain 12" may be accepted in lieu of the perforated drainage pipe (French Drain). Check local building codes for approval.
6. Exposed top of footing is More than 3"
7. Inside corner (Wall-to-Footing) shown with Water Stop
8. All Aussie Membrane 580-AL overlaps must be minimum 2.5".

AVM Industries, Inc.
8245 Remmet Ave, Canoga Park, CA 91304

Quality Waterproofing Products

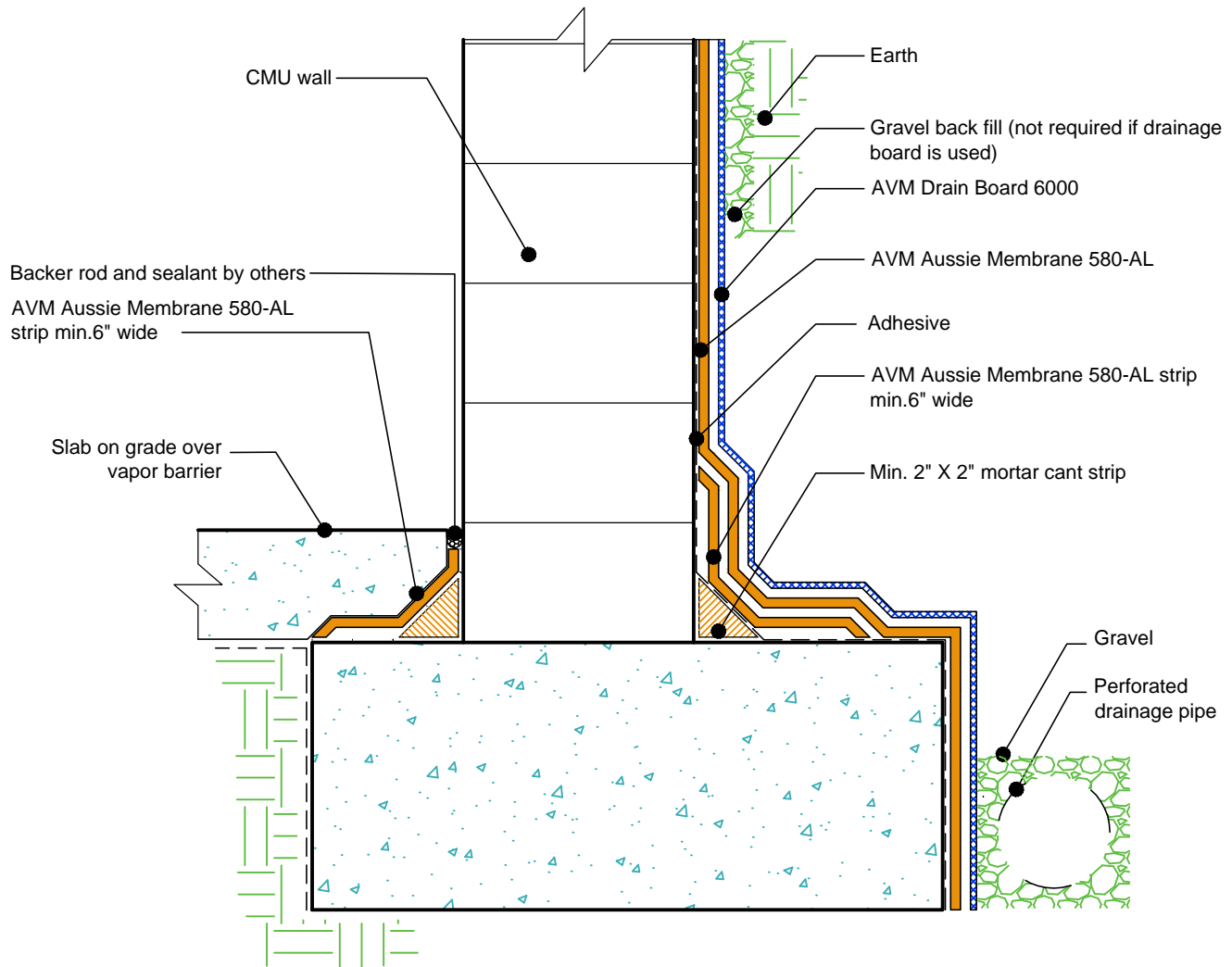
888.414.1041 818.888.0050
www.avmindustries.com

DETAIL #:
AVM-0580-AL-0004-C

AVM SYSTEM 580-AL

AUSSIE MATE® 580-AL

Retaining Walls
Slab on Grade at Top of Footing
AVM AUSSIE MATE® 580-AL
Bituminous Sheet Waterproofing.



NOTES:

1. Aussie Membrane 580-AL is a UV stable, 60-mil heavy duty bituminous waterproofing sheet membrane with an aluminum protection layer for Below-Grade waterproofing applications.
2. For appropriate drainage/protection, use AVM Drain Board 6000.
3. Contact AVM if no drain board or protection board is specified.
4. Only AVM approved liquid adhesive may be used. (water-based and solvent-based adhesives are available)
5. AVM's "Bottom Drain 12" may be accepted in lieu of the perforated drainage pipe (French Drain). Check local building codes for approval.
6. Exposed top of footing is More than 3"
7. Inside corner (Wall-to-Footing) shown with Aussie Membrane 580-AL corner detail
8. All Aussie Membrane 580-AL overlaps must be minimum 2.5".

AVM Industries, Inc.
8245 Remmet Ave, Canoga Park, CA 91304

Quality Waterproofing Products

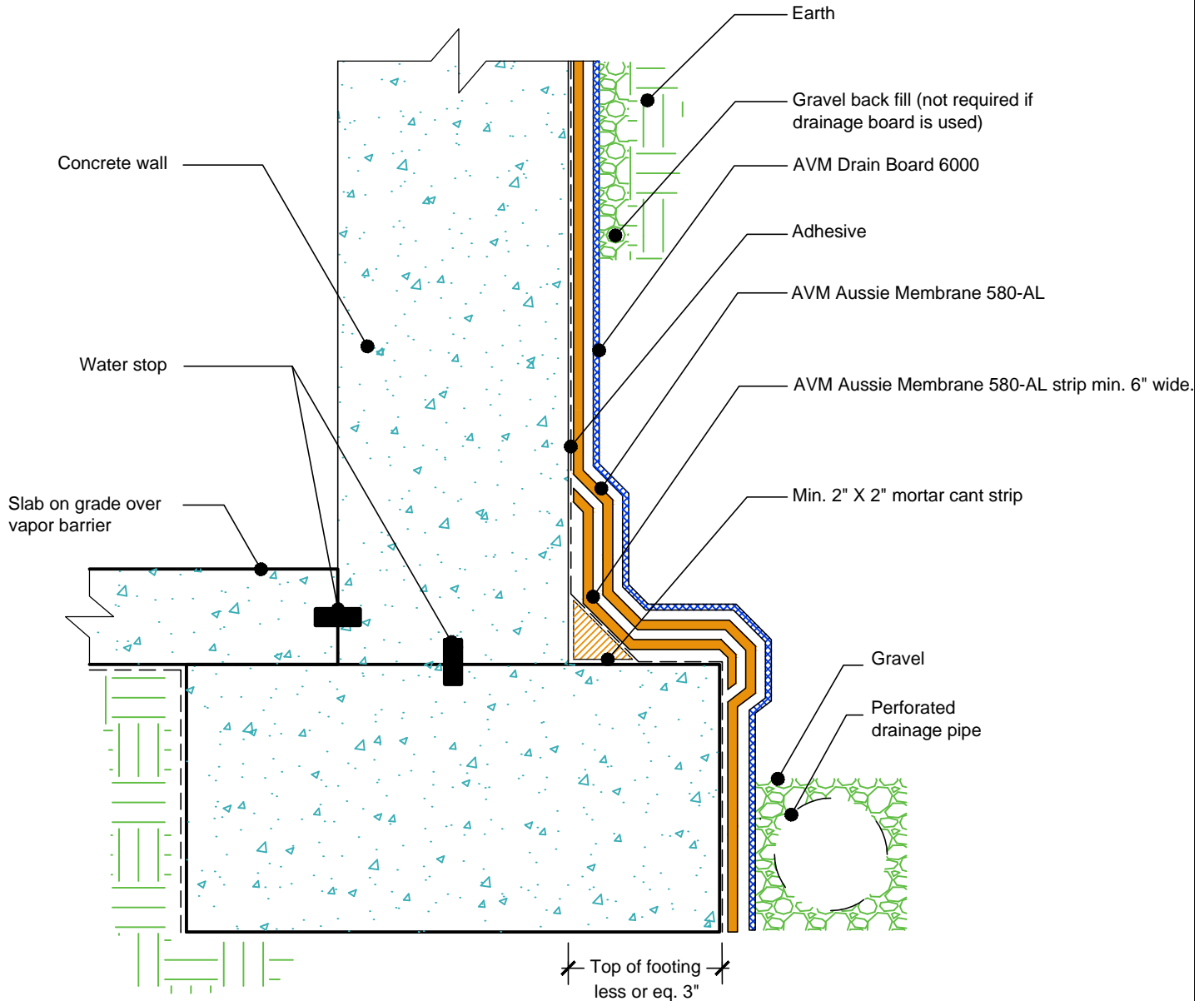
888.414.1041 818.888.0050
www.avmindustries.com

DETAIL #:
AVM-0580-AL-0006-C

AVM SYSTEM 580-AL

AUSSIE MATE® 580-AL

Retaining Walls
Slab on Grade at Top of Footing
AVM AUSSIE MATE® 580-AL
Bituminous Sheet Waterproofing.



NOTES:

1. Aussie Membrane 580-AL is a UV stable, 60-mil heavy duty bituminous waterproofing sheet membrane with an aluminum protection layer for Below-Grade waterproofing applications.
2. For appropriate drainage/protection, use AVM Drain Board 6000.
3. Contact AVM if no drain board or protection board is specified.
4. Only AVM approved liquid adhesive may be used. (water-based and solvent-based adhesives are available)
5. AVM's "Bottom Drain 12" may be accepted in lieu of the perforated drainage pipe (French Drain). Check local building codes for approval.
6. Exposed top of footing is Less than 3"
7. Inside corner (Wall-to-Footing) shown with Water Stop
8. All Aussie Membrane 580-AL overlaps must be minimum 2.5".

AVM Industries, Inc.
8245 Remmet Ave, Canoga Park, CA 91304

Quality Waterproofing Products

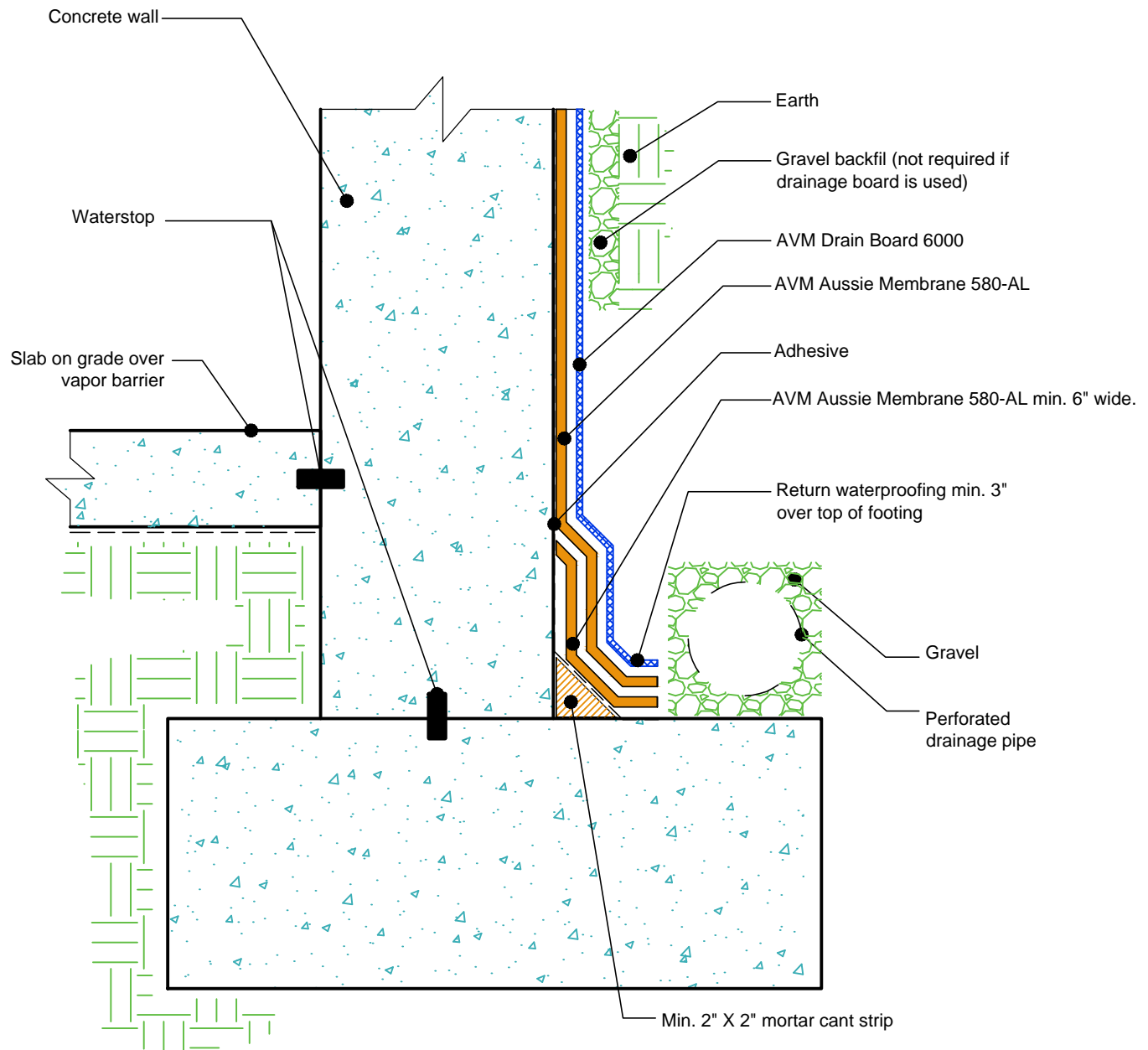
888.414.1041 818.888.0050
www.avmindustries.com

DETAIL #:
AVM-0580-AL-0008-C

AVM SYSTEM 580-AL

AUSSIE MATE® 580-AL

Retaining Walls
Elevated Slab on Grade at Top of Footing
AVM AUSSIE MATE® 580-AL
Bituminous Sheet Waterproofing.



NOTES:

1. Aussie Membrane 580-AL is a UV stable, 60-mil heavy duty bituminous waterproofing sheet membrane with an aluminum protection layer for Below-Grade waterproofing applications.
2. For appropriate drainage/protection, use AVM Drain Board 6000.
3. Contact AVM if no drain board or protection board is specified.
4. Only AVM approved liquid adhesive may be used. (water-based and solvent-based adhesives are available)
5. AVM's "Bottom Drain 12" may be accepted in lieu of the perforated drainage pipe (French Drain). Check local building codes for approval.
6. Exposed top of footing is More than 3"
7. Inside corner (Wall-to-Footing) shown with Water Stop
8. All Aussie Membrane 580-AL overlaps must be minimum 2.5".

AVM Industries, Inc.
8245 Remmet Ave, Canoga Park, CA 91304

Quality Waterproofing Products

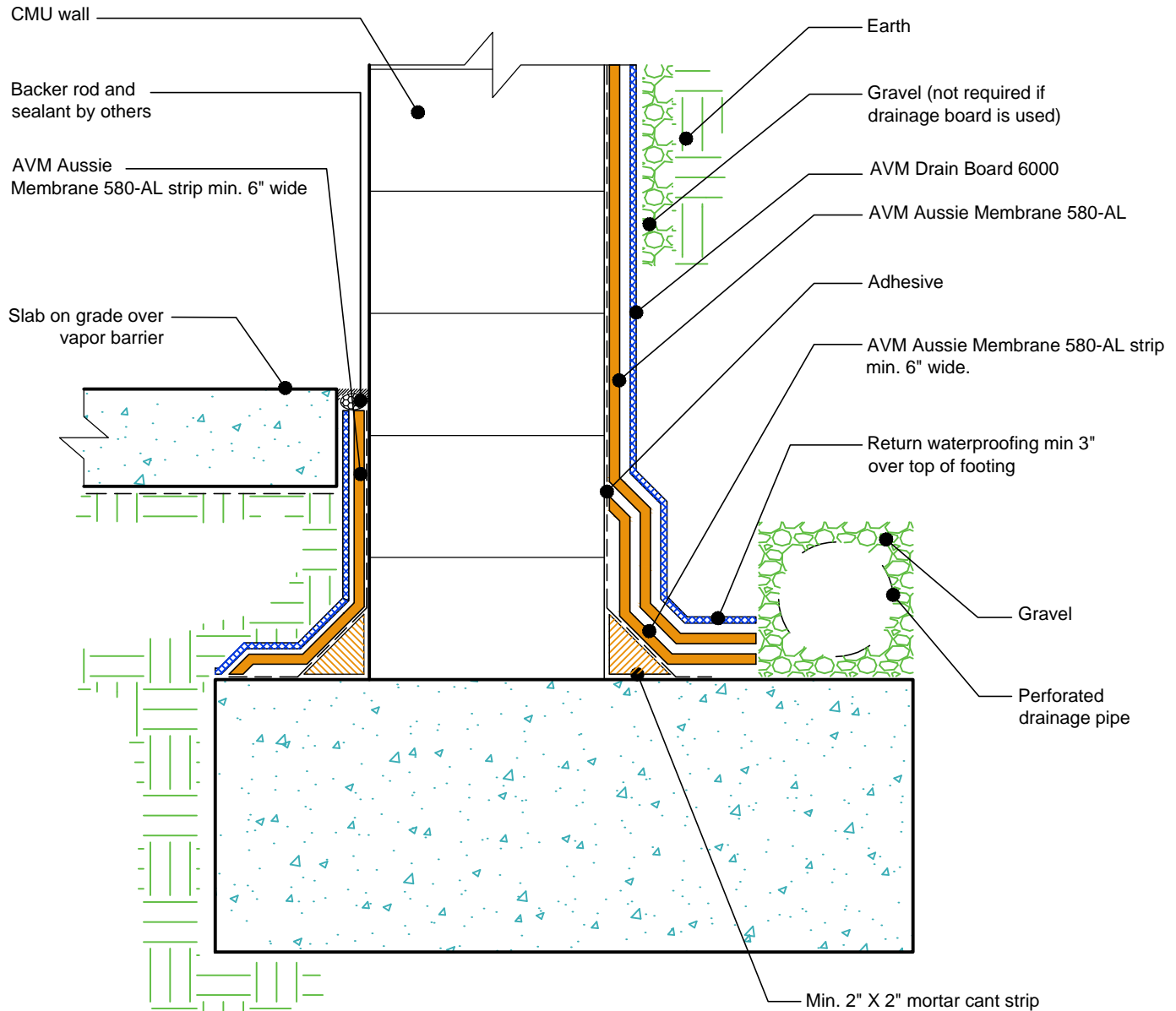
888.414.1041 818.888.0050
www.avmindustries.com

DETAIL #:
AVM-0580-AL-0010-C

AVM SYSTEM 580-AL

AUSSIE MATE® 580-AL

Retaining Walls Elevated Slab on Grade at Top of Footing AVM AUSSIE MATE® 580-AL Bituminous Sheet Waterproofing.



NOTES:

1. Aussie Membrane 580-AL is a UV stable, 60-mil heavy duty bituminous waterproofing sheet membrane with an aluminum protection layer for Below-Grade waterproofing applications.
2. For appropriate drainage/protection, use AVM Drain Board 6000.
3. Contact AVM if no drain board or protection board is specified.
4. Only AVM approved liquid adhesive may be used. (water-based and solvent-based adhesives are available)
5. AVM's "Bottom Drain 12" may be accepted in lieu of the perforated drainage pipe (French Drain). Check local building codes for approval.
6. Exposed top of footing is More than 3"
7. Inside corner (Wall-to-Footing) shown with Aussie Membrane 580-AL corner detail
8. All Aussie Membrane 580-AL overlaps must be minimum 2.5".

AVM Industries, Inc.
8245 Remmet Ave, Canoga Park, CA 91304

Quality Waterproofing Products

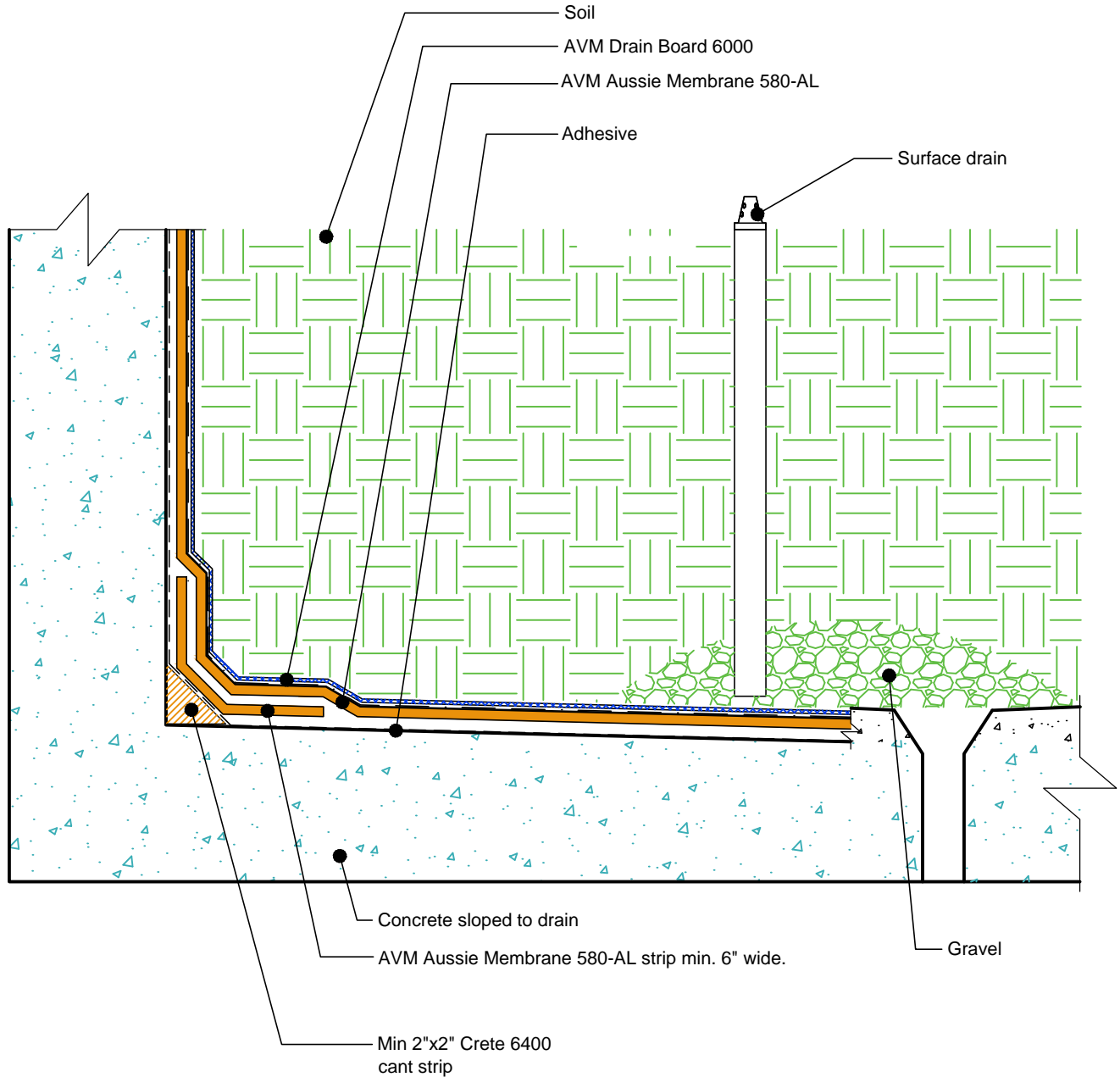
888.414.1041 818.888.0050
www.avmindustries.com

DETAIL #:
AVM-0580-AL-1502-C

AVM SYSTEM 580-AL

AUSSIE MATE® 580-AL

Planter Basic Detail
AVM AUSSIE MATE® 580-AL
Bituminous Sheet Waterproofing.



NOTES:

1. Aussie Membrane 580-AL is a UV stable, 60-mil heavy duty bituminous waterproofing sheet membrane with an aluminum protection layer for Below-Grade waterproofing applications.
2. For appropriate drainage/protection, use AVM Drain Board 6000.
3. Contact AVM if no drain board or protection board is specified.
4. Only AVM approved liquid adhesive may be used. (water-based and solvent-based adhesives are available)
5. All Aussie Membrane 580-AL overlaps must be minimum 2.5".
6. Planters must have sufficient slope, sufficient drains and proper drainage systems to effectively evacuate excessive water.
7. Planters must be sloped to drains before membrane installation. (Min 1/4" per foot) Use AVM Crete 6400/6460 or other approved concrete.
8. Crete 6400/6460. Refer to the Crete 6400 or Crete 6460 Tech Data Sheets or Installation Instructions for more information.

AVM Industries, Inc.
8245 Remmet Ave, Canoga Park, CA 91304

Quality Waterproofing Products

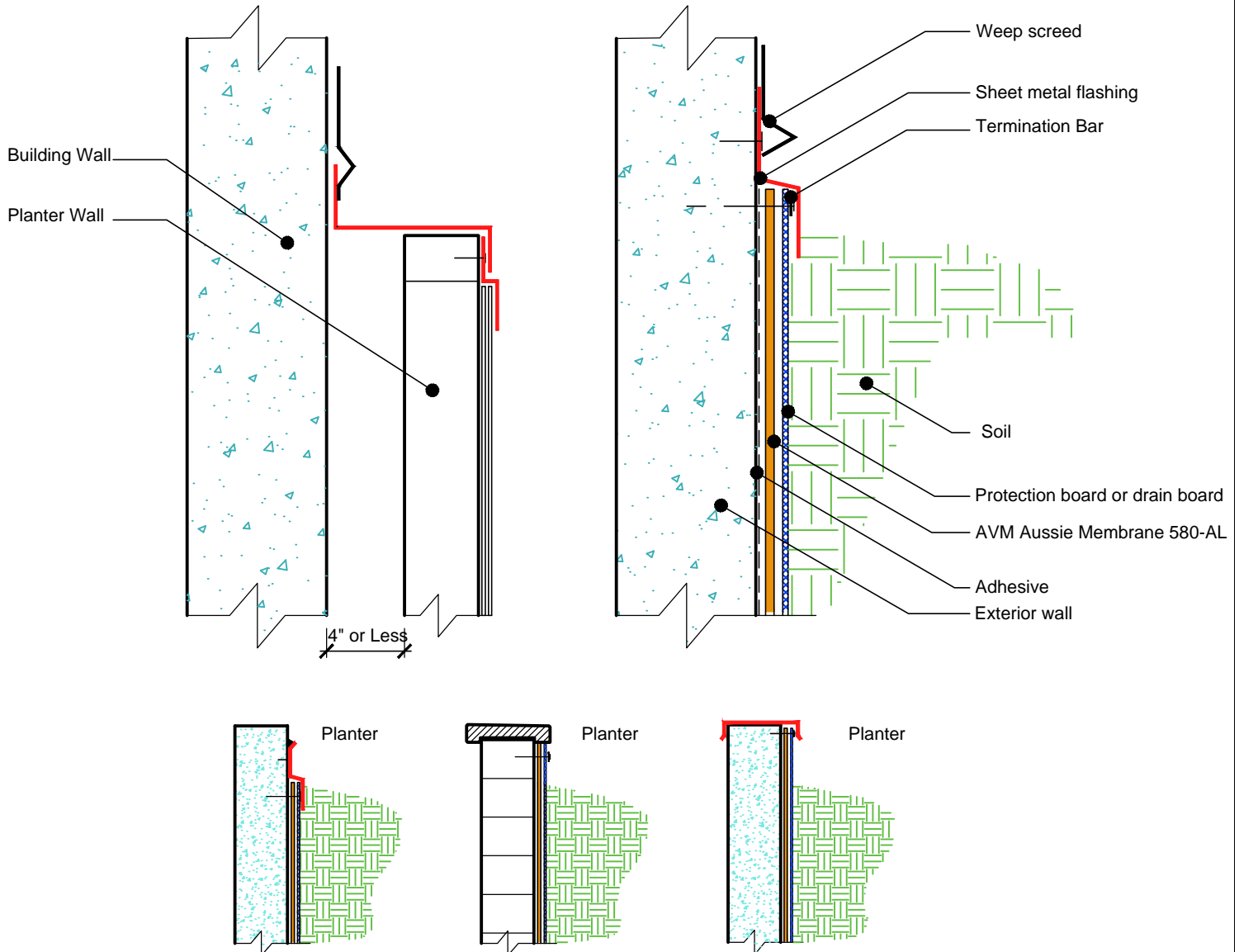
888.414.1041 818.888.0050
www.avmindustries.com

DETAIL #:
AVM-0580-AL-6002-C

AVM SYSTEM 580-AL

AUSSIE MATE® 580-AL

Terminations AVM AUSSIE MATE® 580-AL Bituminous Sheet Waterproofing.



NOTES:

1. Aussie Membrane 580-AL is a UV stable, 60-mil heavy duty bituminous waterproofing sheet membrane with an aluminum protection layer for Below-Grade waterproofing applications.
2. For appropriate drainage/protection, use AVM Drain Board 6000.
3. Contact AVM if no drain board or protection board is specified.
4. Only AVM approved liquid adhesive may be used. (water-based and solvent-based adhesives are available)

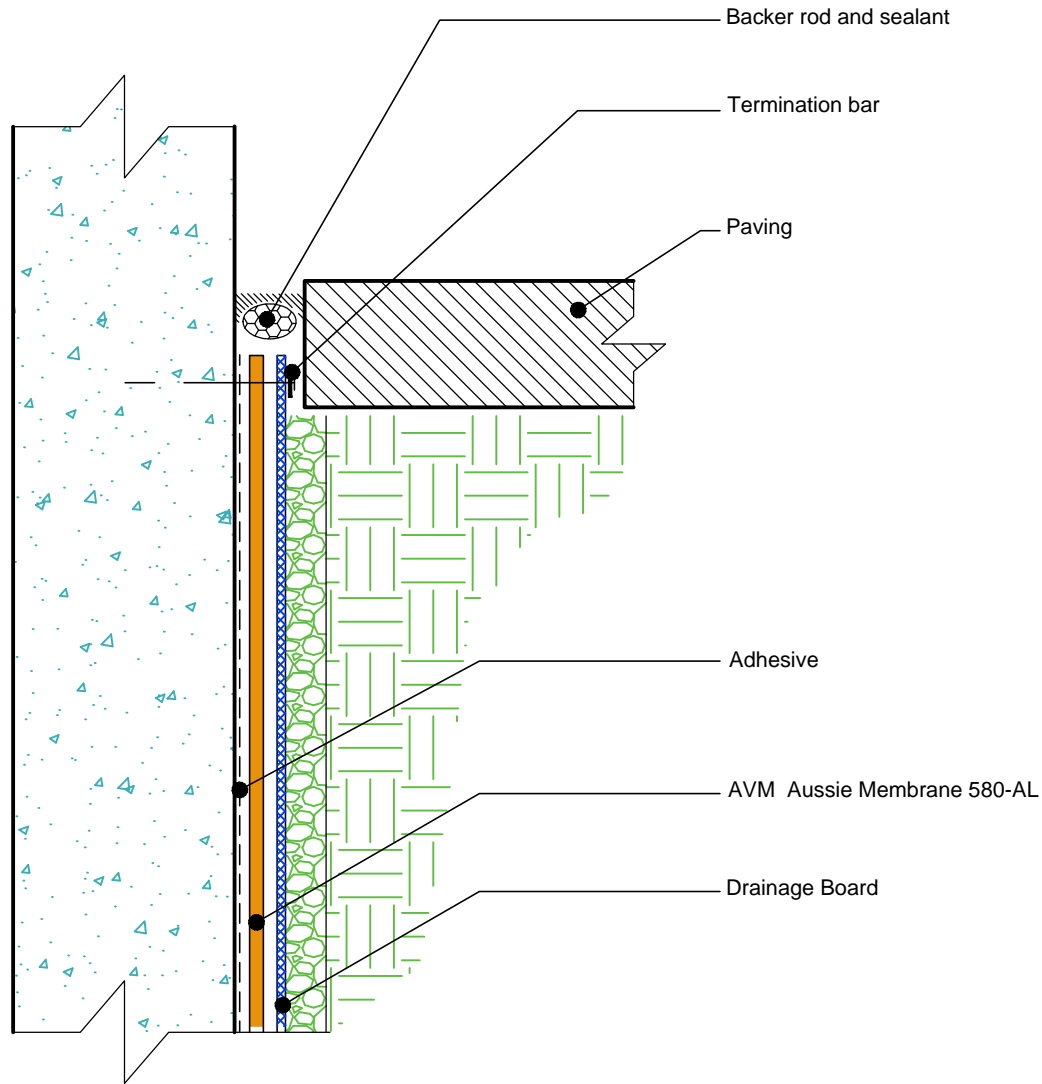
AVM Industries, Inc.
8245 Remmet Ave, Canoga Park, CA 91304

Quality Waterproofing Products

888.414.1041 818.888.0050
www.avmindustries.com

DETAIL #:
 AVM-0580-AL-6004-C
 AVM SYSTEM 580-AL
 AUSSIE MATE® 580-AL

Terminations at Sidewalks on Grade
 AVM AUSSIE MATE® 580-AL
 Bituminous Sheet Waterproofing.



NOTES:

1. Aussie Membrane 580-AL is a UV stable, 60-mil heavy duty bituminous waterproofing sheet membrane with an aluminum protection layer for Below-Grade waterproofing applications.
2. For appropriate drainage/protection, use AVM Drain Board 6000.
3. Contact AVM if no drain board or protection board is specified.
4. Only AVM approved liquid adhesive may be used. (water-based and solvent-based adhesives are available)

AVM Industries, Inc.
 8245 Remmet Ave, Canoga Park, CA 91304

Quality Waterproofing Products

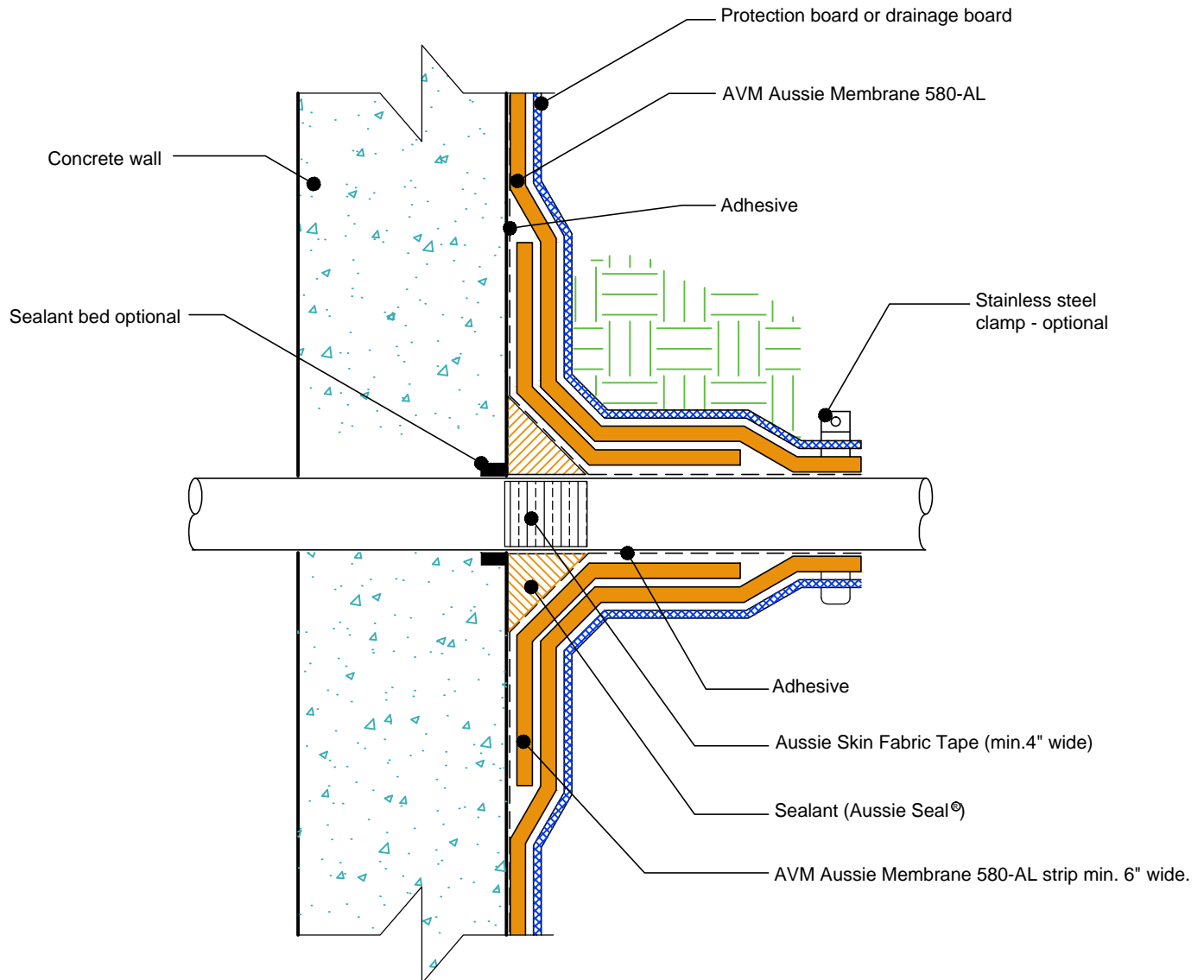
888.414.1041 818.888.0050
 www.avmindustries.com

DETAIL #:
AVM-0580-AL-6502-C

AVM SYSTEM 580-AL

AUSSIE MATE® 580-AL

Pipe Penetration Thru Wall (Option 1)
AVM AUSSIE MATE® 580-AL
Bituminous Sheet Waterproofing.



NOTES:

1. Aussie Membrane 580-AL is a UV stable, 60-mil heavy duty bituminous waterproofing sheet membrane with an aluminum protection layer for Below-Grade waterproofing applications.
2. For appropriate drainage/protection, use AVM Drain Board 6000.
3. Contact AVM if no drain board or protection board is specified.
4. Only AVM approved liquid adhesive may be used. (water-based and solvent-based adhesives are available)
5. All Aussie Membrane 580-AL overlaps must be minimum 2.5".
6. With Sealant (Aussie Seal®) around pipe.
7. Aussie Membrane 580-AL must properly bond to pipe penetrations. Or, use Aussie Skin Fabric Tape+ approved sealant to seal pipes.

AVM Industries, Inc.
8245 Remmet Ave, Canoga Park, CA 91304

Quality Waterproofing Products

888.414.1041 818.888.0050
www.avmindustries.com

FILE NAME: 0580-AL-6502-C-Pipe-Thru-Wall-01-CS

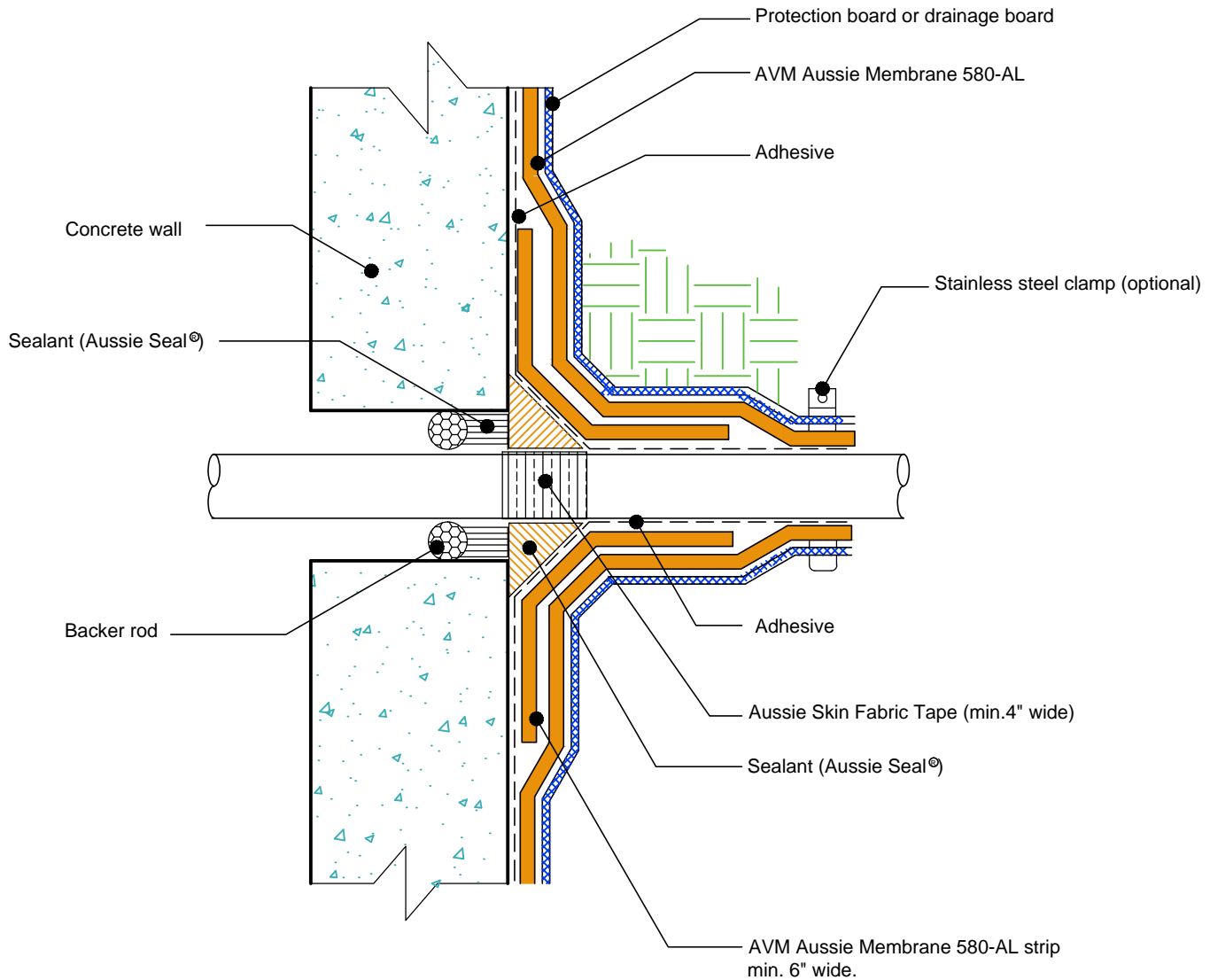
Revision Date: 3/31/2017
Protected by Copyright © AVM Industries, Inc.

DETAIL #:
AVM-0580-AL-6504-C

AVM SYSTEM 580-AL

AUSSIE MATE® 580-AL

Pipe Penetration Thru Wall (Option 2)
AVM AUSSIE MATE® 580-AL
Bituminous Sheet Waterproofing.



NOTES:

1. Aussie Membrane 580-AL is a UV stable, 60-mil heavy duty bituminous waterproofing sheet membrane with an aluminum protection layer for Below-Grade waterproofing applications.
2. For appropriate drainage/protection, use AVM Drain Board 6000.
3. Contact AVM if no drain board or protection board is specified.
4. Only AVM approved liquid adhesive may be used. (water-based and solvent-based adhesives are available)
5. All Aussie Membrane 580-AL overlaps must be minimum 2.5".
6. With Backer Rod and Sealant (Aussie Seal®) around pipe
7. Aussie Membrane 580-AL must properly bond to pipe penetrations. Or, use Aussie Skin Fabric Tape+ approved sealant to seal pipes.

AVM Industries, Inc.
8245 Remmet Ave, Canoga Park, CA 91304

Quality Waterproofing Products

888.414.1041 818.888.0050
www.avmindustries.com

FILE NAME: 0580-AL-6504-C-Pipe-Thru-Wall-02-CS

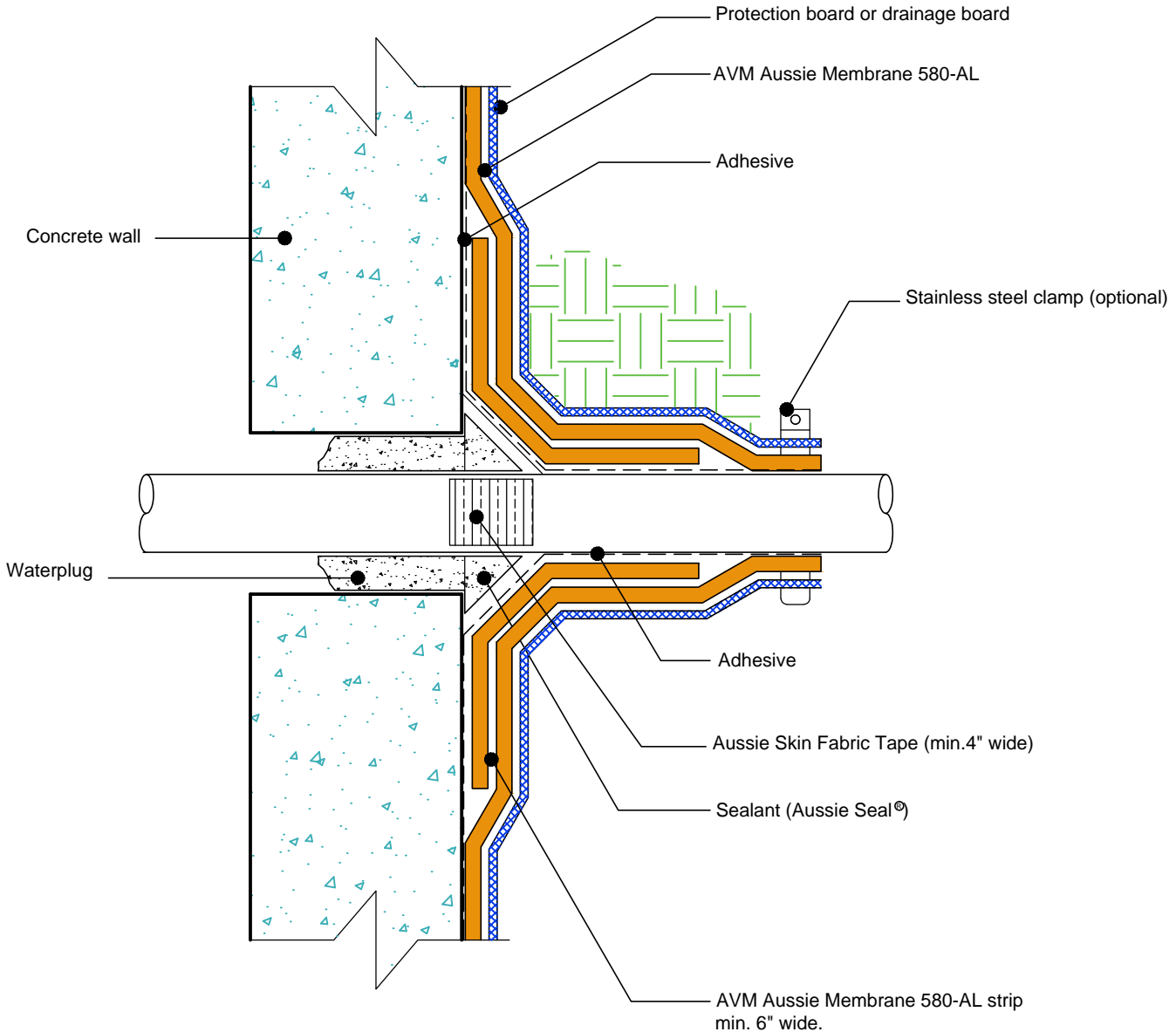
Revision Date: 3/31/2017
Protected by Copyright @ AVM Industries, Inc.

DETAIL #:
AVM-0580-AL-6506-C

AVM SYSTEM 580-AL

AUSSIE MATE® 580-AL

Pipe Penetration Thru Wall (Option 3)
AVM AUSSIE MATE® 580-AL
Bituminous Sheet Waterproofing.



NOTES:

1. Aussie Membrane 580-AL is a UV stable, 60-mil heavy duty bituminous waterproofing sheet membrane with an aluminum protection layer for Below-Grade waterproofing applications.
2. For appropriate drainage/protection, use AVM Drain Board 6000.
3. Contact AVM if no drain board or protection board is specified.
4. Only AVM approved liquid adhesive may be used. (water-based and solvent-based adhesives are available)
5. All Aussie Membrane 580-AL overlaps must be minimum 2.5".
6. With Water Plug and Sealant (Aussie Seal®) around pipe
7. Aussie Membrane 580-AL must properly bond to pipe penetrations. Or, use Aussie Skin Fabric Tape+ approved sealant to seal pipes.

AVM Industries, Inc.
8245 Remmet Ave, Canoga Park, CA 91304

Quality Waterproofing Products

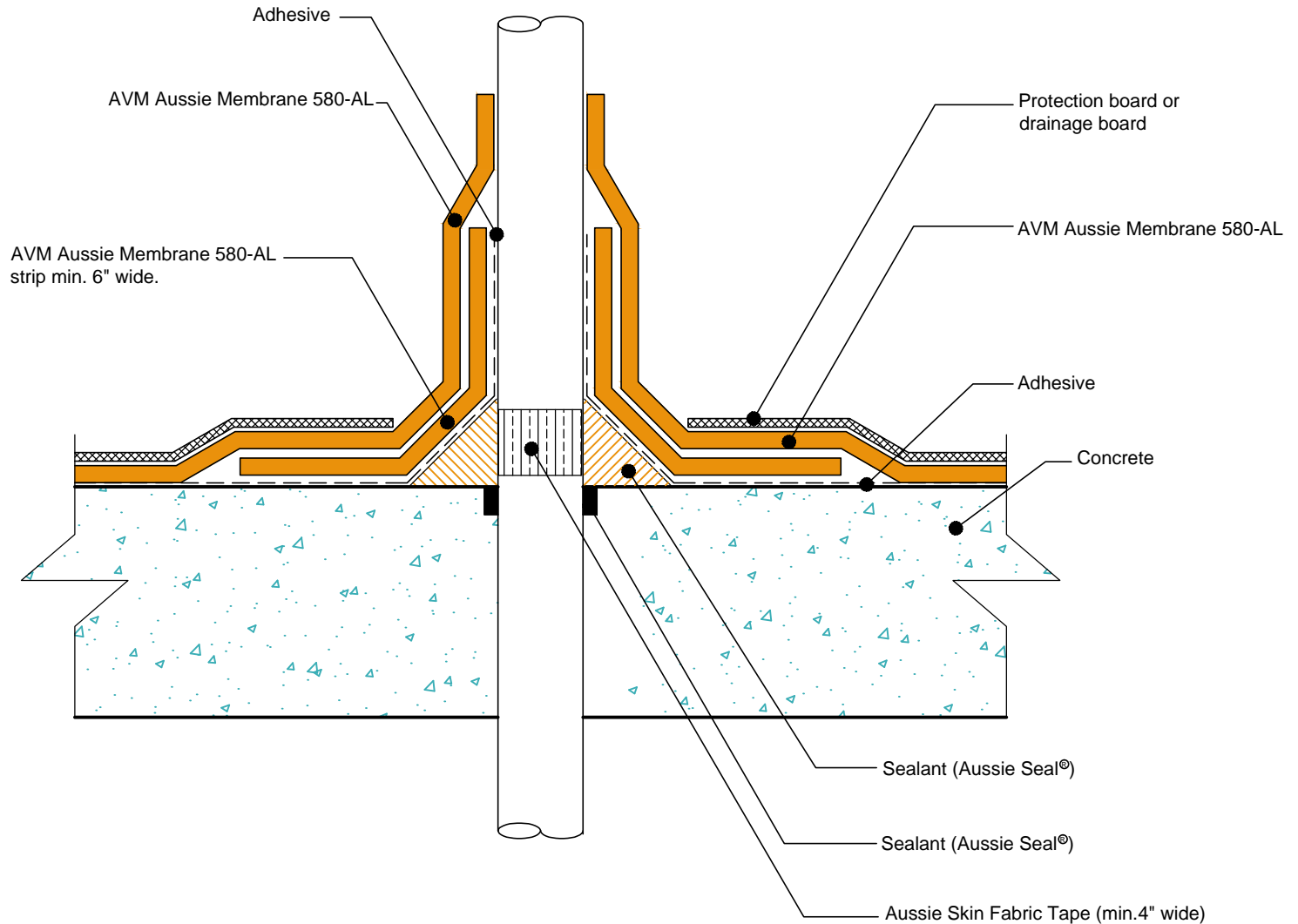
888.414.1041 818.888.0050
www.avmindustries.com

DETAIL #:
AVM-0580-AL-6702-C

AVM SYSTEM 580-AL

AUSSIE MATE® 580-AL

Pipe Penetration Thru Slab (Option 1)
AVM AUSSIE MATE® 580-AL
Bituminous Sheet Waterproofing.



NOTES:

1. Aussie Membrane 580-AL is a UV stable, 60-mil heavy duty bituminous waterproofing sheet membrane with an aluminum protection layer for Below-Grade waterproofing applications.
2. For appropriate drainage/protection, use AVM Drain Board 6000.
3. Contact AVM if no drain board or protection board is specified.
4. Only AVM approved liquid adhesive may be used. (water-based and solvent-based adhesives are available)
5. All Aussie Membrane 580-AL overlaps must be minimum 2.5\"/>

AVM Industries, Inc.
8245 Remmet Ave, Canoga Park, CA 91304

Quality Waterproofing Products

888.414.1041 818.888.0050
www.avmindustries.com

FILE NAME: 0580-AL-6702-C-Pipe-Thru-Slab-01-CS

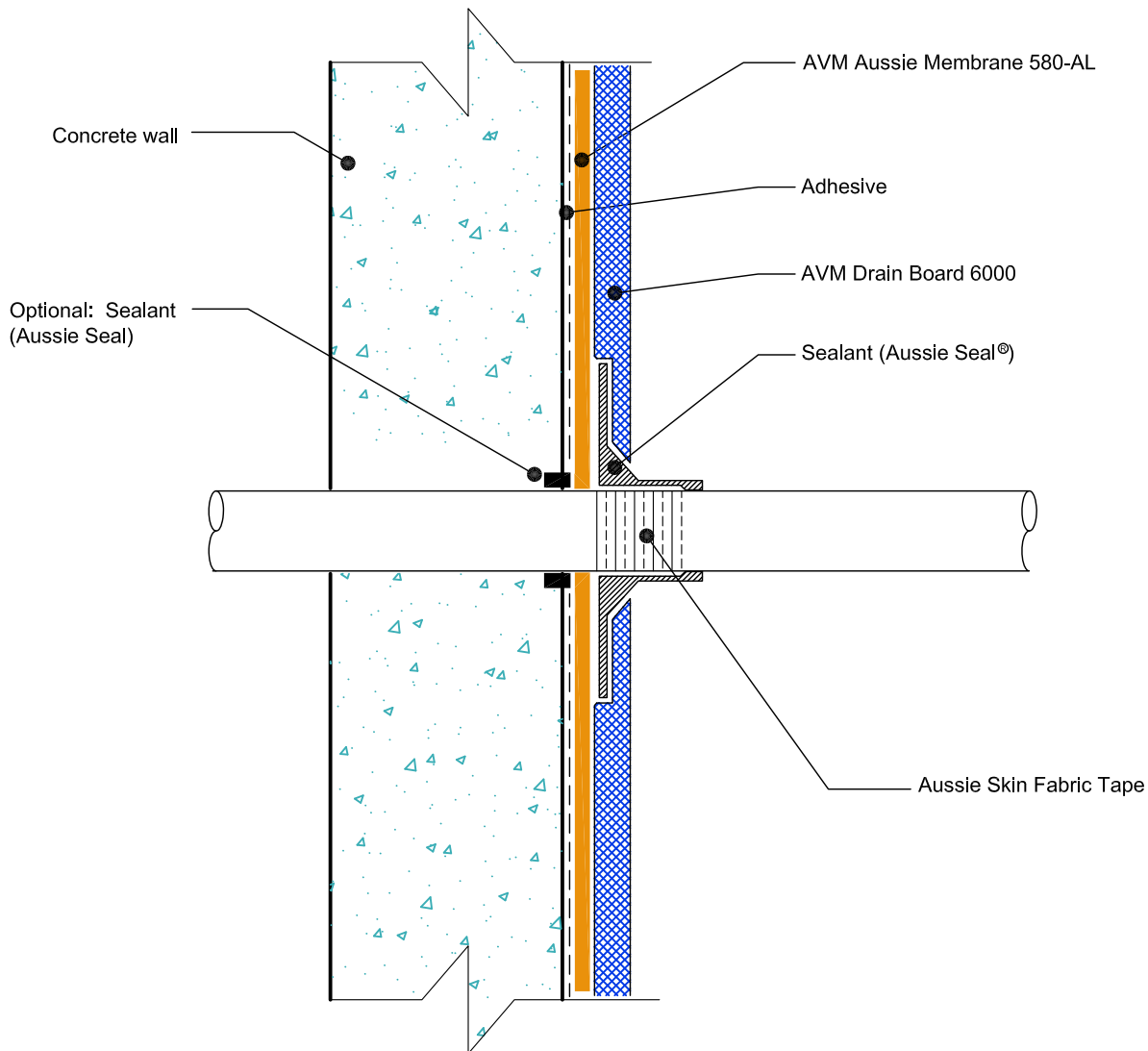
Revision Date: 3/31/2017
Protected by Copyright @ AVM Industries, Inc.

DETAIL #:
AVM-0580-AL-6508-C

AVM SYSTEM 580-AL

AUSSIE MATE® 580-AL

Pipe Penetration Thru Wall (Option 4)
AVM AUSSIE MATE® 580-AL
Bituminous Sheet Waterproofing.



NOTES:

1. Aussie Membrane 580-AL is a UV stable, 60-mil heavy duty bituminous waterproofing sheet membrane with an aluminum protection layer for Below-Grade waterproofing applications.
2. For appropriate drainage/protection, use AVM Drain Board 6000.
3. Contact AVM if no drain board or protection board is specified.
4. Only AVM approved liquid adhesive may be used. (water-based and solvent-based adhesives are available)
5. With Sealant (Aussie Seal®) around pipe.
6. Sealant must properly bond to pipe penetration. Use Aussie Skin Fabric Tape around pipe penetration.

AVM Industries, Inc.
8245 Remmet Ave, Canoga Park, CA 91304

Quality Waterproofing Products

888.414.1041 818.888.0050
www.avmindustries.com

FILE NAME: 0580-AL-6508-C-Pipe-Thru-Wall-04-CS

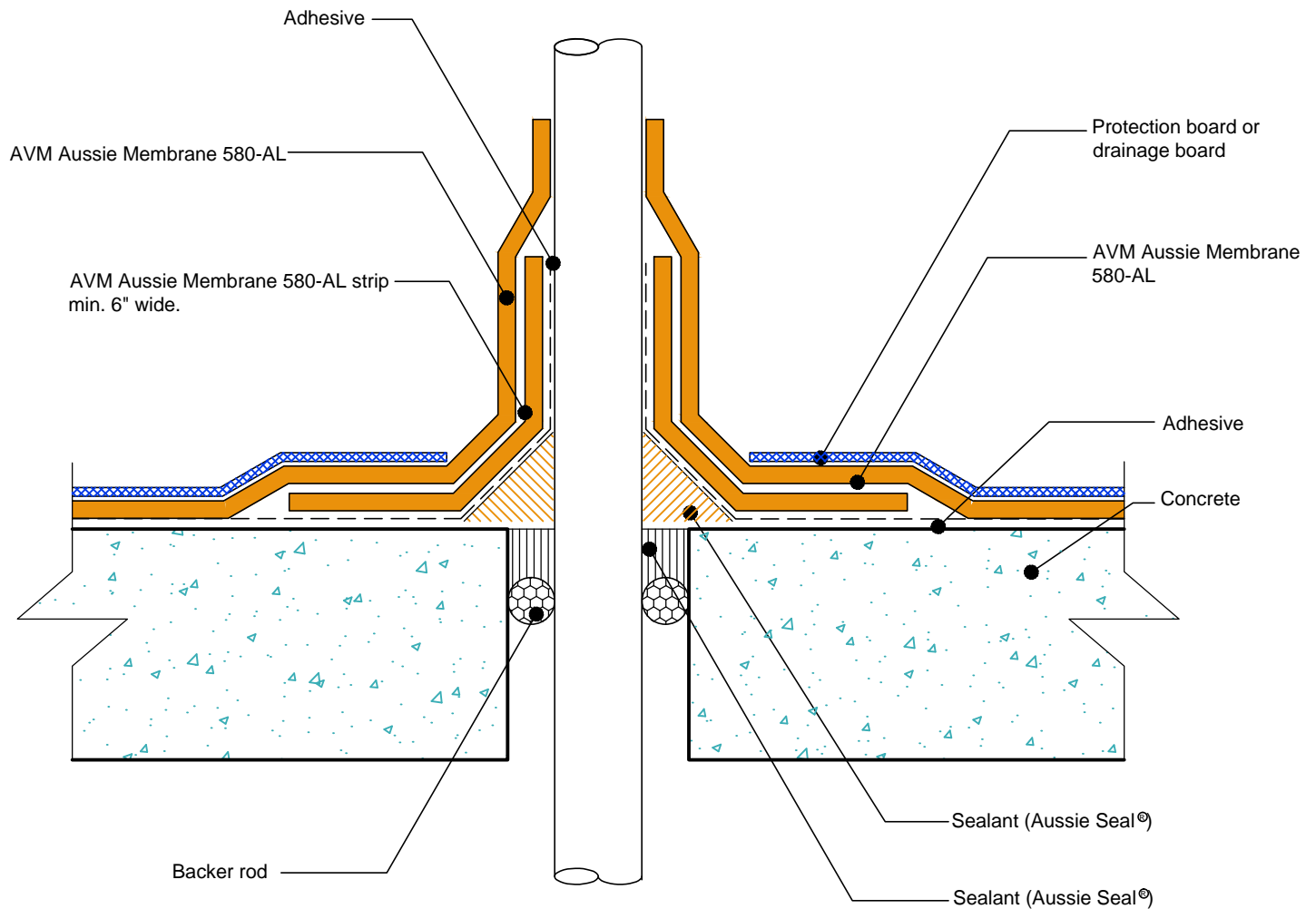
Revision Date: 3/31/2017
Protected by Copyright @ AVM Industries, Inc.

DETAIL #:
AVM-0580-AL-6704-C

AVM SYSTEM 580-AL

AUSSIE MATE® 580-AL

Pipe Penetration Thru Slab (Option 2)
AVM AUSSIE MATE® 580-AL
Bituminous Sheet Waterproofing.



NOTES:

1. Aussie Membrane 580-AL is a UV stable, 60-mil heavy duty bituminous waterproofing sheet membrane with an aluminum protection layer for Below-Grade waterproofing applications.
2. For appropriate drainage/protection, use AVM Drain Board 6000.
3. Contact AVM if no drain board or protection board is specified.
4. Only AVM approved liquid adhesive may be used. (water-based and solvent-based adhesives are available)
5. All Aussie Membrane 580-AL overlaps must be minimum 2.5\"/>

AVM Industries, Inc.
8245 Remmet Ave, Canoga Park, CA 91304

Quality Waterproofing Products

888.414.1041 818.888.0050
www.avmindustries.com

DETAIL #:
AVM-0580-AL-7002

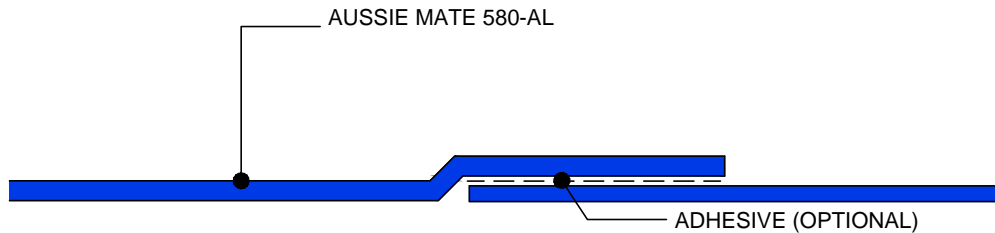
AVM SYSTEM 580-AL

AUSSIE MATE® 580-AL

Lapping Detail #1
AVM AUSSIE MATE® 580-AL
Bituminous Sheet Waterproofing.



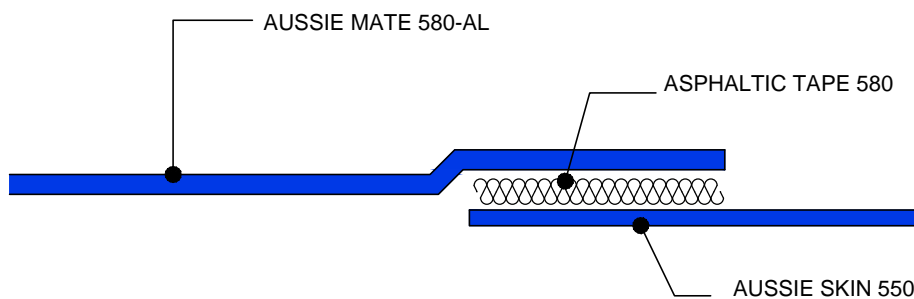
FACTORY LAP



Important Note: When installing the "Factory Lap", The Installation procedure should be as follows:

1. Before bonding the next layer of Aussie Mate 580-AL to an existing layer, Remove both clear plastic films from the factory laps (Where the aluminum protection layer ends)
2. If overlap will extend to the aluminum, wipe the aluminum surface clean. Use a light solvent if needed.
3. Install the next sheet of Aussie Mate 580-AL with a minimum 2.5" overlap.
4. Roll the steel roller over the lap several times while applying pressure to ensure proper adhesion.
5. In cold weather, using heat gun will improve adhesion
6. Using AVM approved adhesive on the seams will increase bonding.

NON-FACTORY LAP



Important Note: When installing the "Non-Factory Lap", The Installation procedure should be as follows:

1. Before bonding the next layer of Aussie Mate 580-AL to an existing layer, Wipe clean a min 5" wide swath of the aluminum surface edge. Use a light solvent if needed.
2. Cut a piece of Aussie Mate 580 Double Sided Tape, Remove the release film on one side, apply to existing bonded sheet along its edge.
3. Roll the steel roller over the double-sided tape several times while applying pressure to ensure proper adhesion.
4. Remove the second release film and apply the new Aussie 580-AL sheet lap to it.
5. Once again, roll the steel roller over the lap several times while applying pressure to ensure proper adhesion.
6. In cold weather, using heat gun will improve adhesion

NOTES:

1. Aussie Membrane 580-AL is a UV stable, 60-mil heavy duty bituminous waterproofing sheet membrane with an aluminum protection layer for Below-Grade waterproofing applications.
2. Only AVM approved liquid adhesive may be used. (water-based and solvent-based adhesives are available)

DETAIL #:
AVM-0580-AL-7004

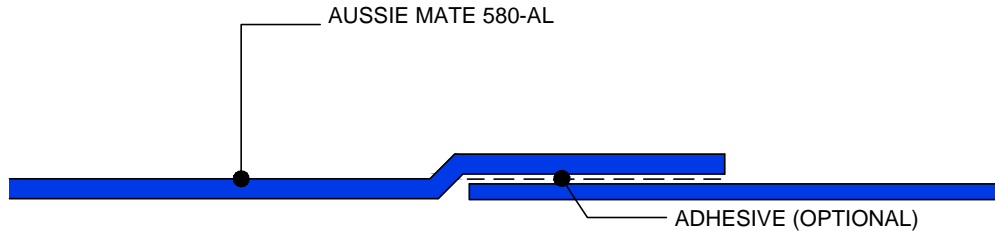
AVM SYSTEM 580-AL

AUSSIE MATE® 580-AL

Lapping Detail #2
AVM AUSSIE MATE® 580-AL
Bituminous Sheet Waterproofing.



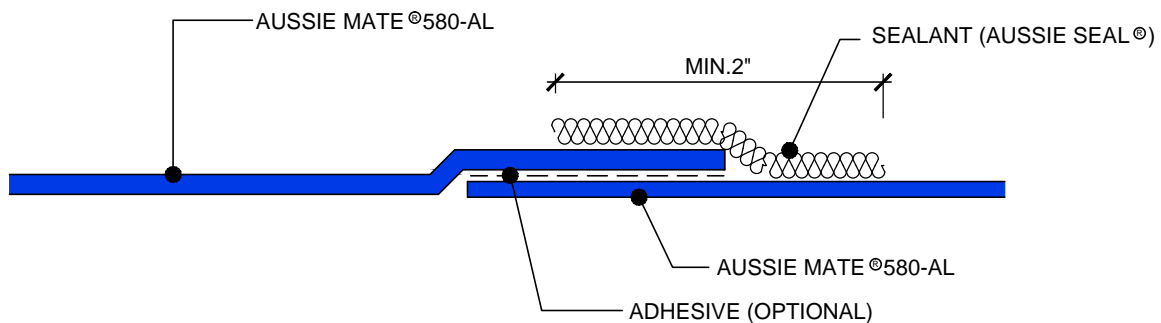
FACTORY LAP



Important Note: When installing the "Factory Lap", The Installation procedure should be as follows:

1. Before bonding the next layer of Aussie Mate 580-AL to an existing layer, Remove both clear plastic films from the factory laps (Where the aluminum protection layer ends)
2. If overlap will extend to the aluminum, wipe the aluminum surface clean. Use a light solvent if needed.
3. Install the next sheet of Aussie Mate 580-AL with a minimum 2.5" overlap.
4. Roll the steel roller over the lap several times while applying pressure to ensure proper adhesion.
5. In cold weather, using heat gun will improve adhesion
6. Using AVM approved adhesive on the seams will increase bonding.

NON-FACTORY LAP



Important Note: When installing the "Non-Factory Lap", The Installation procedure should be as follows:

1. Before bonding the next layer of Aussie Mate 580-AL to an existing layer, Wipe clean a min 5" wide swath of the aluminum surfaceedge. Use a light solvent if needed.
2. Install the next sheet of Aussie Mate 580-AL with a minimum 2.5" overlap.
3. Roll the steel roller over the double-sided tape several times while applying pressure to ensure proper adhesion.
4. Roll the steel roller over the lap several times while applying pressure to ensure proper adhesion.
5. In cold weather, using heat gun will improve adhesion.
6. Apply Sealant (Aussie Seal®) over the seam. Min 2" wide sealant bead. (Min 1" wide sealant bead over each sheet)
7. Using AVM approved adhesive on the seams will increase bonding.

NOTES:

1. Aussie Membrane 580-AL is a UV stable, 60-mil heavy duty bituminous waterproofing sheet membrane with an aluminum protection layer for Below-Grade waterproofing applications.
2. Only AVM approved liquid adhesive may be used. (water-based and solvent-based adhesives are available)