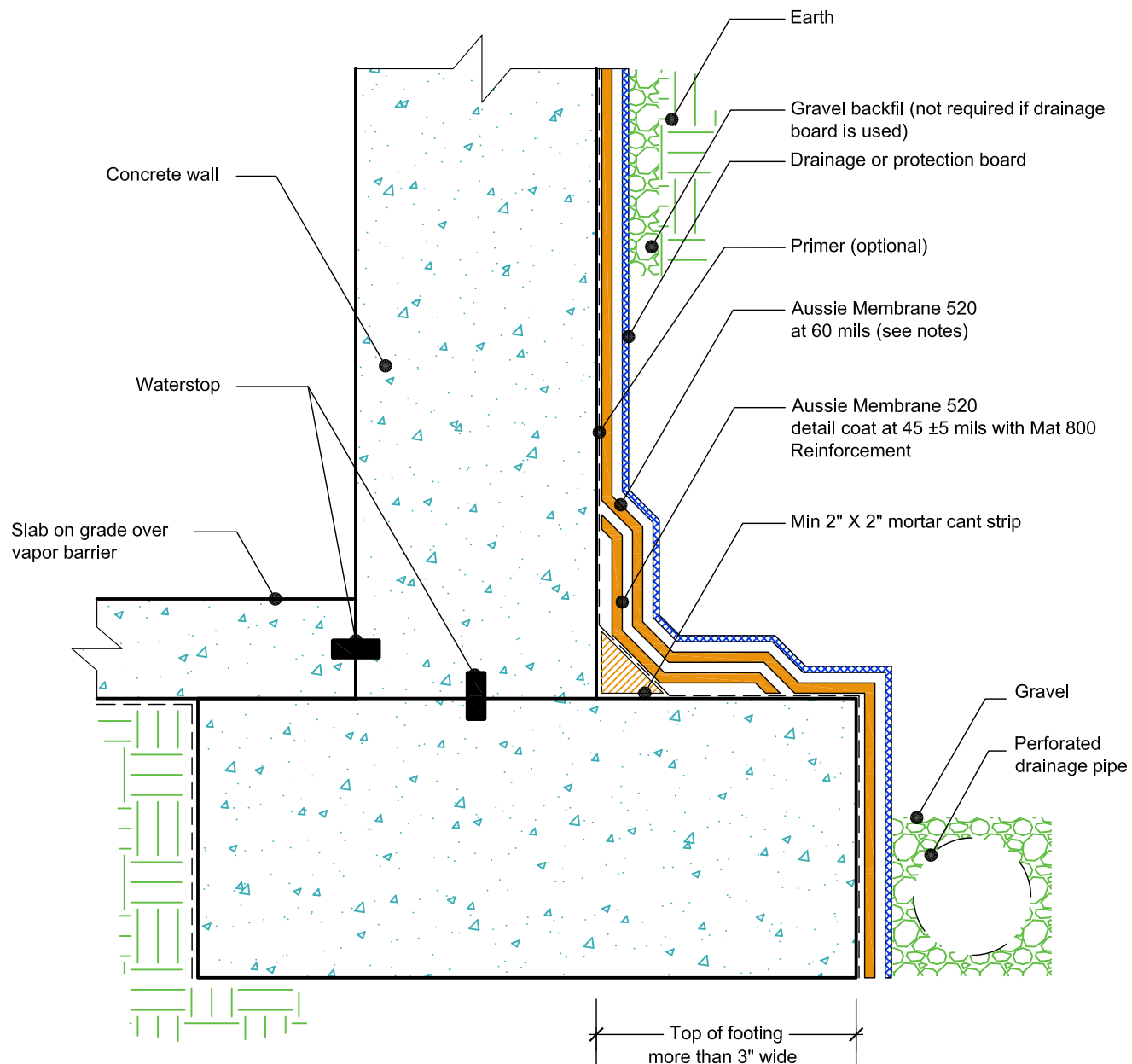


DETAIL #:
AVM-0520-0002-C

AVM SYSTEM 520

AUSSIE MEMBRANE 520

Retaining Walls
Slab on Grade at Top of Footing
AVM AUSSIE MEMBRANE 520
Fluid Applied Waterproofing.



NOTES:

1. Aussie Membrane 520 is a Polyurethane liquid (Roller or Brush Applied) for Below-Grade, Between-Slab, Planters, Roof-Gardens and similar type Waterproofing.
2. For proper membrane thickness and appropriate protection and drainage, refer to AVM Aussie Membrane 520 "Min Thickness Table"
3. Contact AVM if no drain board or protection board is specified.
4. AVM's "Bottom Drain 12" may be accepted in lieu of the perforated drainage pipe (French Drain). Check local building codes for approval.
5. Exposed top of footing is More than 3"
6. Inside corner (Wall-to-Footing) shown with Water Stop
7. Reinforce the Aussie Membrane 520 with AVM Mat 800 at all corners, metal transitions, penetrations, gaps, drains, etc.
8. Mortar cant strip and detail coat at the cold joint may be replaced with other cold joint details with prior approval from AVM.

AVM Industries, Inc.
8245 Remmet Ave, Canoga Park, CA 91304

Quality Waterproofing Products

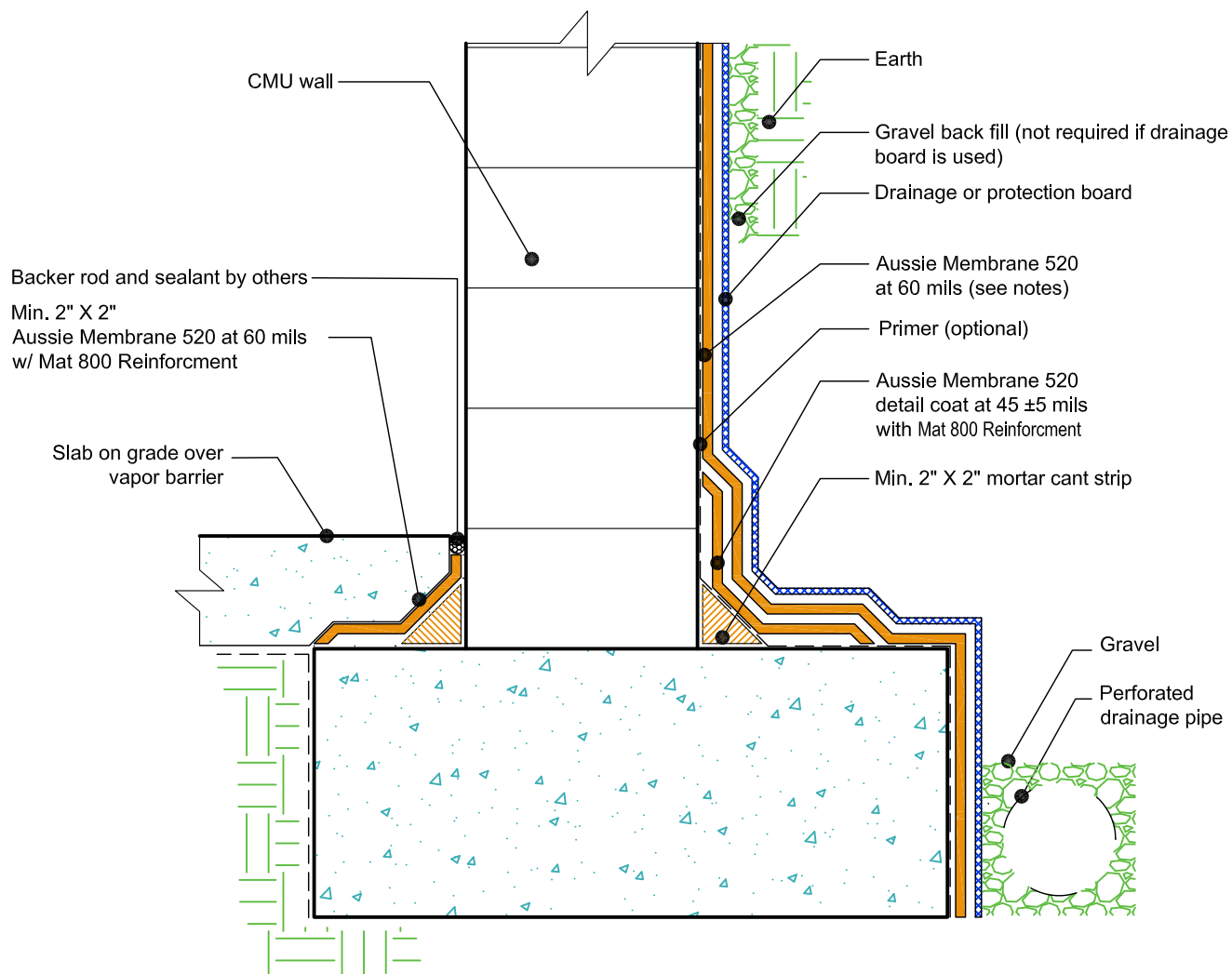
888.414.1041 818.888.0050
www.avmindustries.com

DETAIL #:
AVM-0520-0004-C

AVM SYSTEM 520

AUSSIE MEMBRANE 520

Retaining Walls
Slab on Grade at Top of Footing
AVM AUSSIE MEMBRANE 520
Fluid Applied Waterproofing.



NOTES:

1. Aussie Membrane 520 is a Polyurethane liquid (Roller or Brush Applied) for Below-Grade, Between-Slab, Planters, Roof-Gardens and similar type Waterproofing.
2. For proper membrane thickness and appropriate protection and drainage, refer to AVM Aussie Membrane 520 "Min Thickness Table"
3. Contact AVM if no drain board or protection board is specified.
4. AVM's "Bottom Drain 12" may be accepted in lieu of the perforated drainage pipe (French Drain). Check local building codes for approval.
5. Inside corner (Wall-to-Footing) shown with Aussie Membrane 520 corner detail
6. Reinforce the Aussie Membrane 520 with AVM Mat 800 at all corners, metal transitions, penetrations, gaps, drains, etc.
7. Mortar cant strip and detail coat at the cold joint may be replaced with other cold joint details with prior approval from AVM.

AVM Industries, Inc.
8245 Remmet Ave, Canoga Park, CA 91304

Quality Waterproofing Products

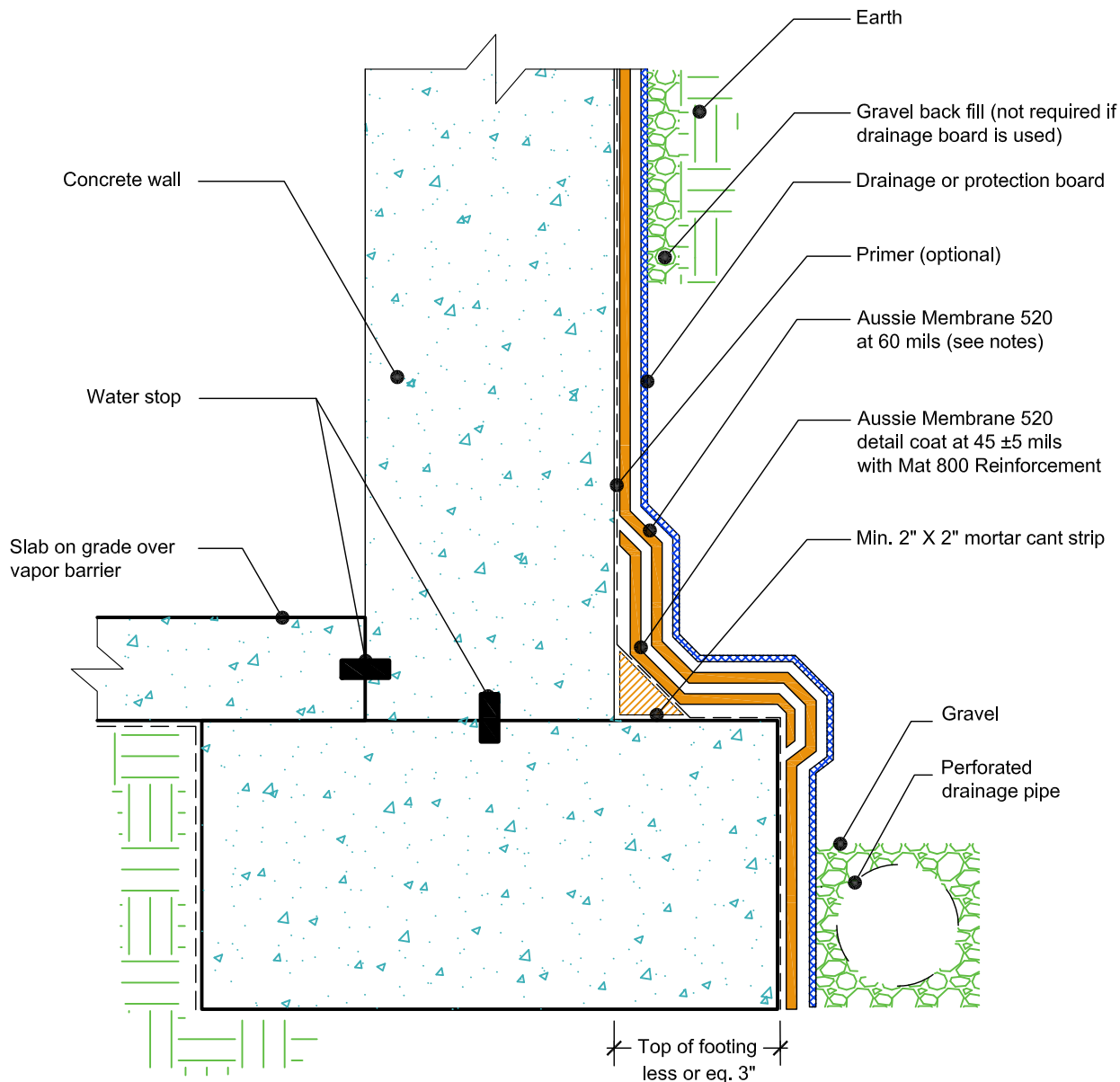
888.414.1041 818.888.0050
www.avmindustries.com

DETAIL #:
AVM-0520-0006-C

AVM SYSTEM 520

AUSSIE MEMBRANE 520

Retaining Walls
Slab on Grade at Top of Footing
AVM AUSSIE MEMBRANE 520
Fluid Applied Waterproofing.



NOTES:

1. Aussie Membrane 520 is a Polyurethane liquid (Roller or Brush Applied) for Below-Grade, Between-Slab, Planters, Roof-Gardens and similar type Waterproofing.
2. For proper membrane thickness and appropriate protection and drainage, refer to AVM Aussie Membrane 520 "Min Thickness Table"
3. Contact AVM if no drain board or protection board is specified.
4. AVM's "Bottom Drain 12" may be accepted in lieu of the perforated drainage pipe (French Drain). Check local building codes for approval.
5. Exposed top of footing is Less than 3"
6. Inside corner (Wall-to-Footing) shown with Water Stop
7. Reinforce the Aussie Membrane 520 with AVM Mat 800 at all corners, metal transitions, penetrations, gaps, drains, etc.
8. Mortar cant strip and detail coat at the cold joint may be replaced with other cold joint details with prior approval from AVM.

AVM Industries, Inc.
8245 Remmet Ave, Canoga Park, CA 91304

Quality Waterproofing Products

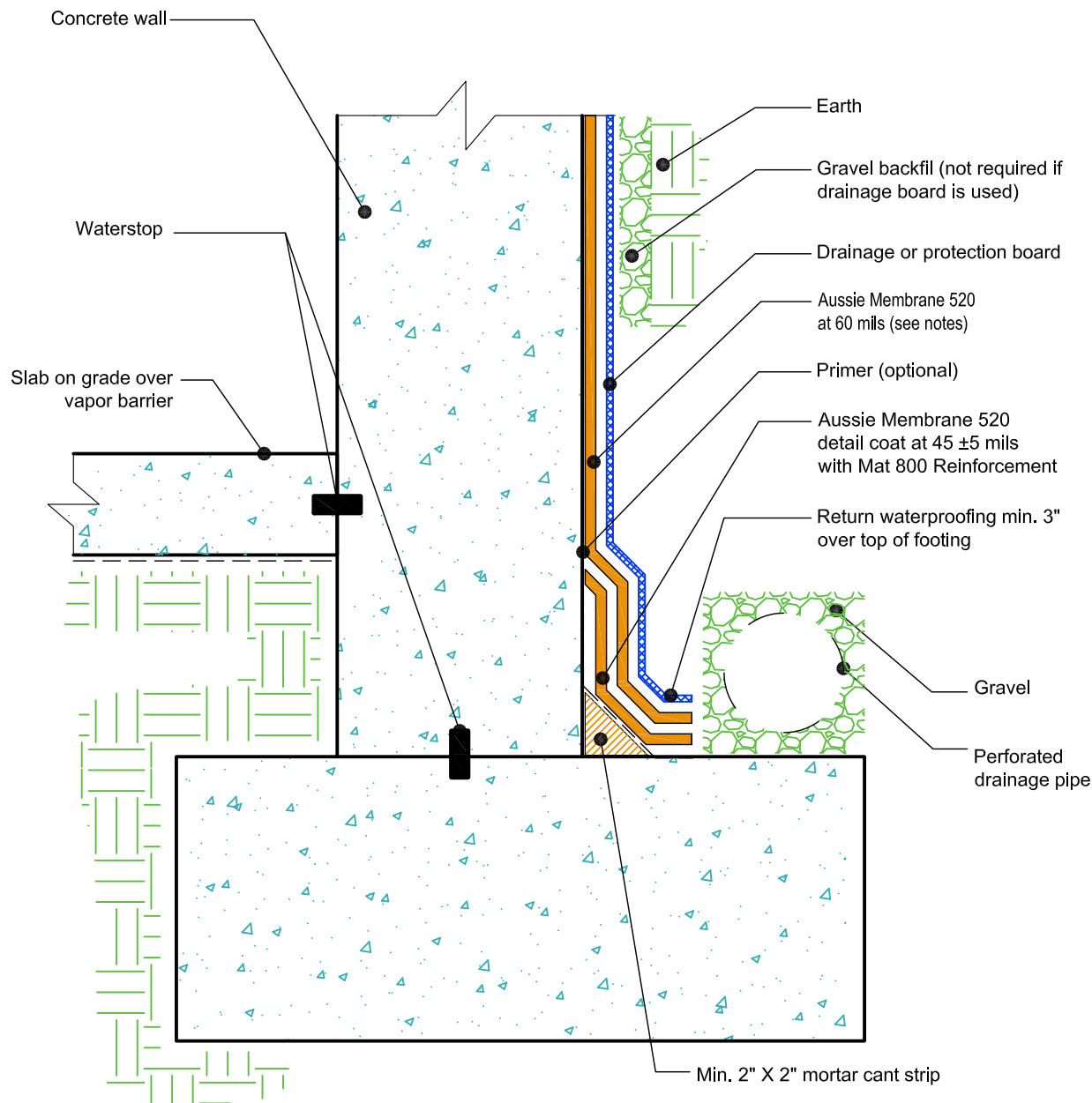
888.414.1041 818.888.0050
www.avmindustries.com

DETAIL #:
AVM-0520-0008-C

AVM SYSTEM 520

AUSSIE MEMBRANE 520

Retaining Walls
Elevated Slab on Grade at Top of Footing
AVM AUSSIE MEMBRANE 520
Fluid Applied Waterproofing.



NOTES:

1. Aussie Membrane 520 is a Polyurethane liquid (Roller or Brush Applied) for Below-Grade, Between-Slab, Planters, Roof-Gardens and similar type Waterproofing.
2. For proper membrane thickness and appropriate protection and drainage, refer to AVM Aussie Membrane 520 "Min Thickness Table"
3. Contact AVM if no drain board or protection board is specified.
4. AVM's "Bottom Drain 12" may be accepted in lieu of the perforated drainage pipe (French Drain). Check local building codes for approval.
5. Inside corner (Wall-to-Footing) shown with Water Stop
6. Reinforce the Aussie Membrane 520 with AVM Mat 800 at all corners, metal transitions, penetrations, gaps, drains, etc.
7. Mortar cant strip and detail coat at the cold joint may be replaced with other cold joint details with prior approval from AVM.

AVM Industries, Inc.
8245 Remmet Ave, Canoga Park, CA 91304

Quality Waterproofing Products

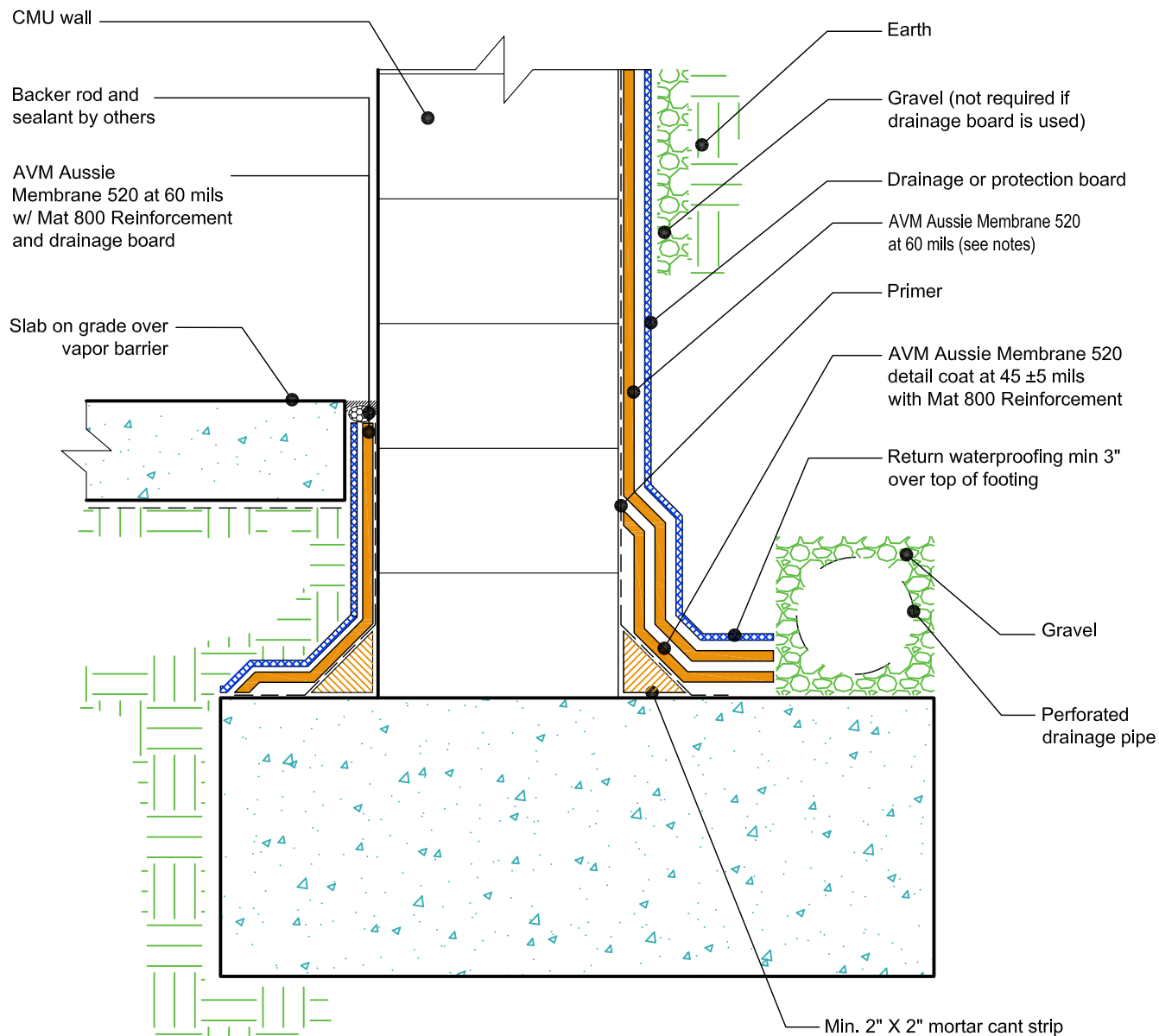
888.414.1041 818.888.0050
www.avmindustries.com

DETAIL #:
AVM-0520-0010-C

AVM SYSTEM 520

AUSSIE MEMBRANE 520

Retaining Walls
Elevated Slab on Grade at Top of Footing
AVM AUSSIE MEMBRANE 520
Fluid Applied Waterproofing.



NOTES:

1. Aussie Membrane 520 is a Polyurethane liquid (Roller or Brush Applied) for Below-Grade, Between-Slab, Planters, Roof-Gardens and similar type Waterproofing.
2. For proper membrane thickness and appropriate protection and drainage, refer to AVM Aussie Membrane 520 "Min Thickness Table"
3. Contact AVM if no drain board or protection board is specified.
4. AVM's "Bottom Drain 12" may be accepted in lieu of the perforated drainage pipe (French Drain). Check local building codes for approval.
5. Inside corner (Wall-to-Footing) shown with Aussie Membrane 520 corner detail
6. Reinforce the Aussie Membrane 520 with AVM Mat 800 at all corners, metal transitions, penetrations, gaps, drains, etc.
7. Mortar cant strip and detail coat at the cold joint may be replaced with other cold joint details with prior approval from AVM.

AVM Industries, Inc.
8245 Remmet Ave, Canoga Park, CA 91304

Quality Waterproofing Products

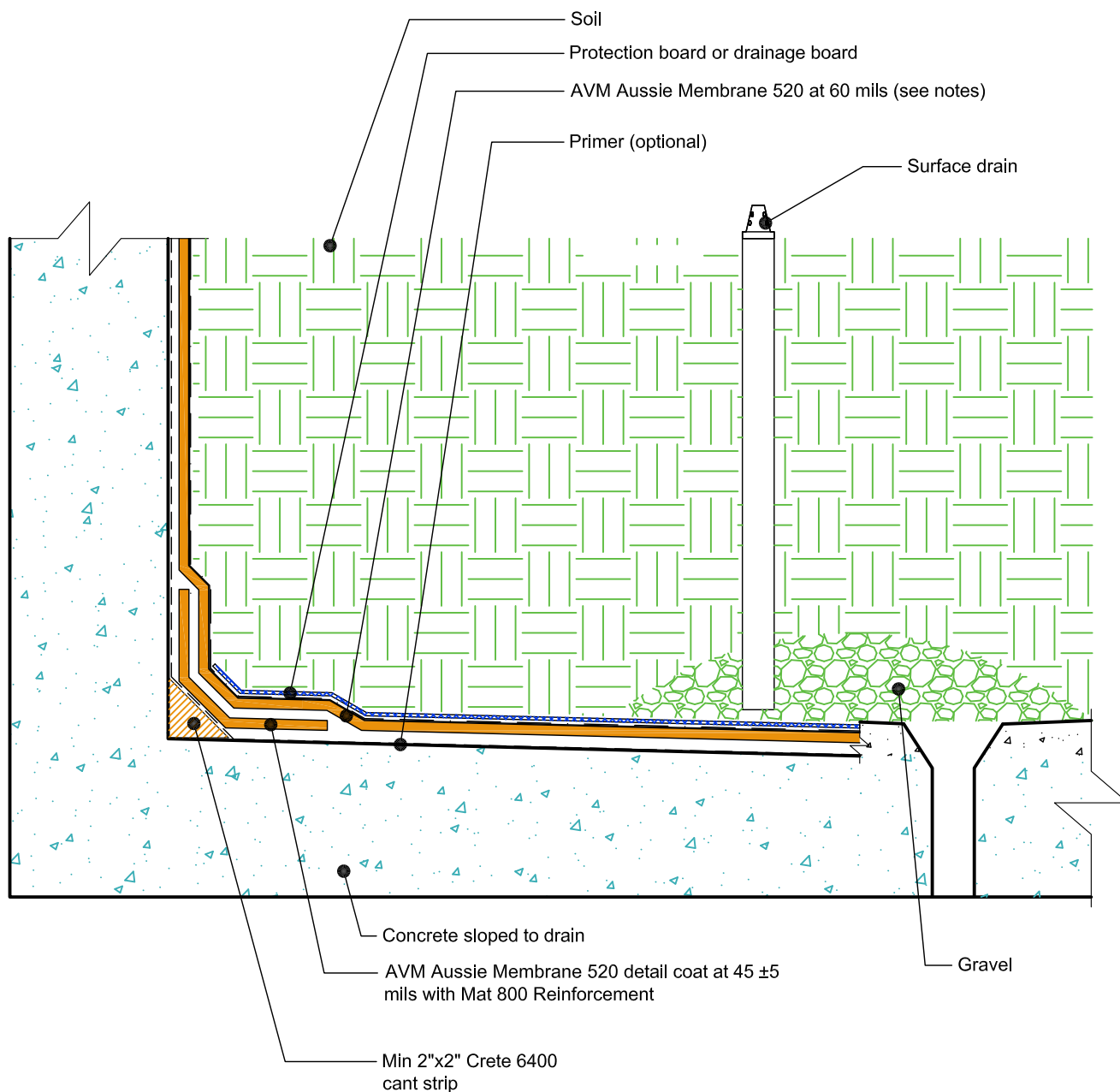
888.414.1041 818.888.0050
www.avmindustries.com

DETAIL #:
AVM-0520-1502-C

AVM SYSTEM 520

AUSSIE MEMBRANE 520

Planter Basic Detail
AVM AUSSIE MEMBRANE 520
Fluid Applied Waterproofing.



NOTES:

1. Aussie Membrane 520 is a Polyurethane liquid (Roller or Brush Applied) for Below-Grade, Between-Slab, Planters, Roof-Gardens and similar type Waterproofing.
2. For proper membrane thickness and appropriate protection and drainage, refer to AVM Aussie Membrane 520 "Min Thickness Table"
3. Contact AVM if no drain board or protection board is specified.
4. Planters must have sufficient slope, sufficient drains and proper drainage systems to effectively evacuate excessive water.
5. Reinforce the Aussie Membrane 520 with AVM Mat 800 at all corners, metal transitions, penetrations, gaps, drains, etc.
6. Mortar cant strip and detail coat at the cold joint may be replaced with other cold joint details with prior approval from AVM.

AVM Industries, Inc.
8245 Remmet Ave, Canoga Park, CA 91304

Quality Waterproofing Products

888.414.1041 818.888.0050
www.avmindustries.com

FILE NAME: 0520-1502-C-Planter-Basic-Detail-CS

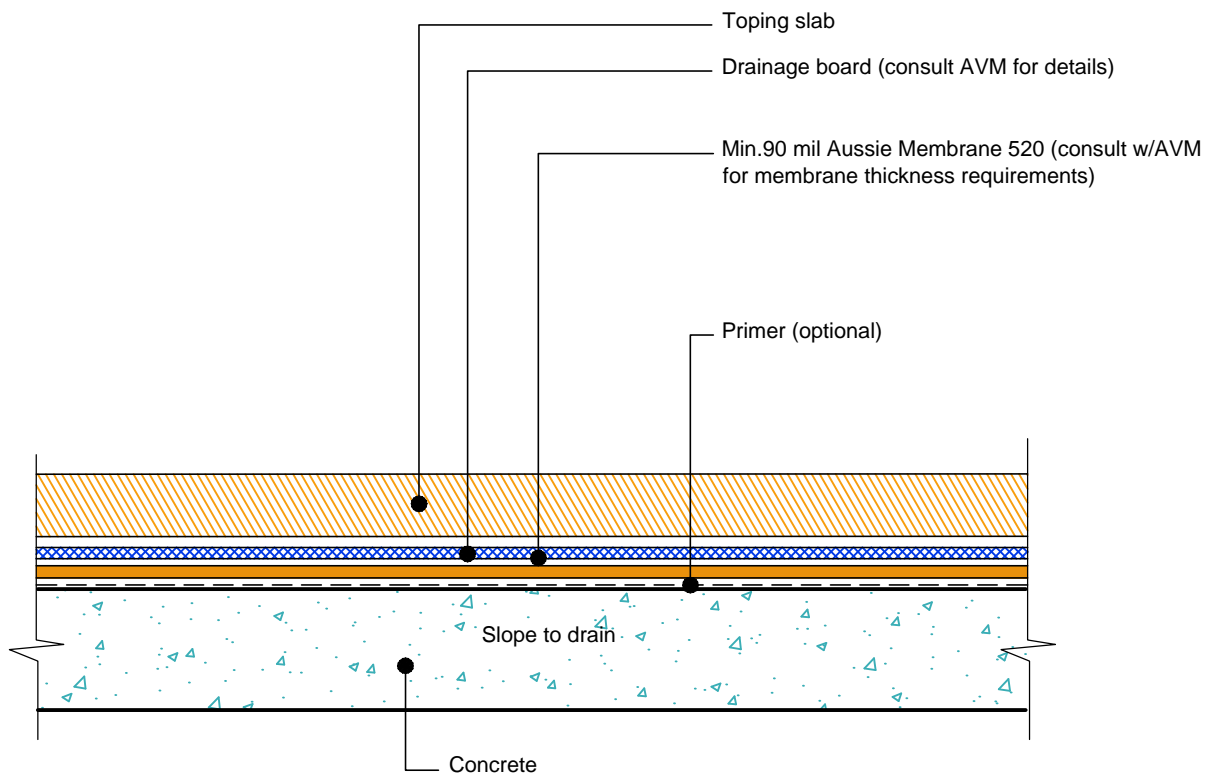
Revision Date: 5/31/2016
Protected by Copyright @ AVM Industries, Inc.

DETAIL #:
AVM-0520-2001-C

AVM SYSTEM 520

AUSSIE MEMBRANE 520

Topping on Slab on Concrete Substrate
over AVM AUSSIE MEMBRANE 520
Fluid Applied Waterproofing.



NOTES:

1. Aussie Membrane 520 is a Polyurethane liquid (Roller or Brush Applied) for Below-Grade, Between-Slab, Planters, Roof-Gardens and similar type Waterproofing.
2. For proper membrane thickness and appropriate protection and drainage, refer to AVM Aussie Membrane 520 "Min Thickness Table"
3. Contact AVM if no drain board or protection board is specified.
4. For drainage and protection on topping Slabs up to 4" thick for pedestrian applications, use AVM Drain Board 6000.
5. For drainage and protection on topping slabs over 4" thick or for vehicular applications, use AVM Drain Board 9000.

AVM Industries, Inc.
8245 Remmet Ave, Canoga Park, CA 91304

Quality Waterproofing Products

888.414.1041 818.888.0050
www.avmindustries.com

FILE NAME: 0520-2001-C-Topping-Slab-On-Concrete-CS

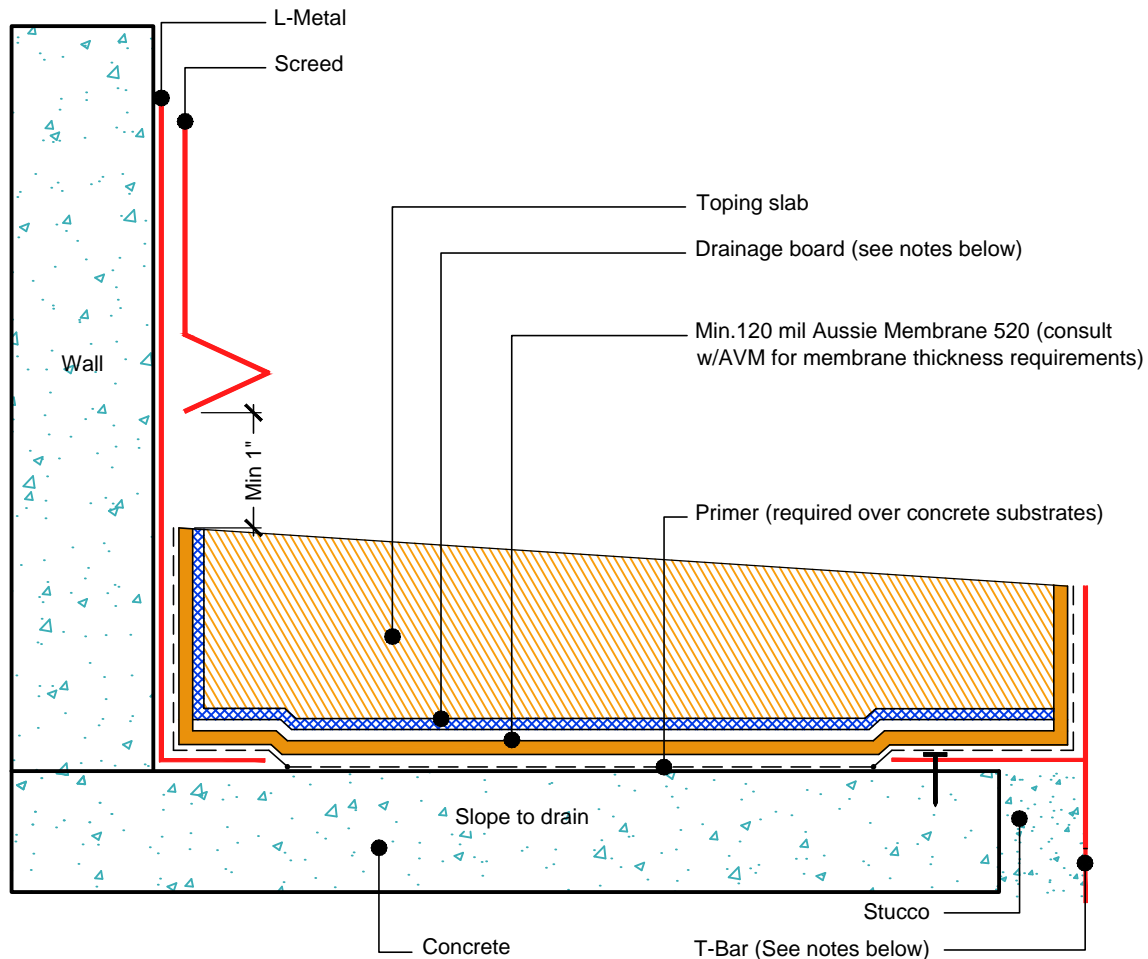
Revision Date: 5/31/2016
Protected by Copyright @ AVM Industries, Inc.

DETAIL #:
AVM-0520-2002-C

AVM SYSTEM 520

AUSSIE MEMBRANE 520

Topping Slab on Concrete Substrate
over AVM AUSSIE MEMBRANE 520
with Drain Board, Fluid Applied
Waterproofing (Heavy Duty).



NOTES:

1. Aussie Membrane 520 is a Polyurethane liquid (Roller or Brush Applied) for Below-Grade, Between-Slab, Planters, Roof-Gardens and similar type Waterproofing.
2. For proper membrane thickness and appropriate protection and drainage, refer to AVM Aussie Membrane 520 "Min Thickness Table"
3. Contact AVM if no drain board or protection board is specified.
4. For drainage and protection on topping Slabs up to 4" thick for pedestrian applications, use AVM Drain Board 6000.
5. For drainage and protection on topping slabs over 4" thick or for vehicular applications, use AVM Drain Board 9000.
6. This assembly is for pedestrian traffic use only. For vehicular applications and other heavy loads, contact AVM for approval.
7. Reinforce the Aussie Membrane 520 with AVM Mat 800 at all corners, metal transitions, penetrations, gaps, drains, etc.
8. Mortar cant strip and detail coat at the cold joint may be replaced with other cold joint details with prior approval from AVM.
9. Many edge details are possible. All must allow for proper water evacuation. (None should trap water) Consult AVM for details.

AVM Industries, Inc.
8245 Remmet Ave, Canoga Park, CA 91304

Quality Waterproofing Products

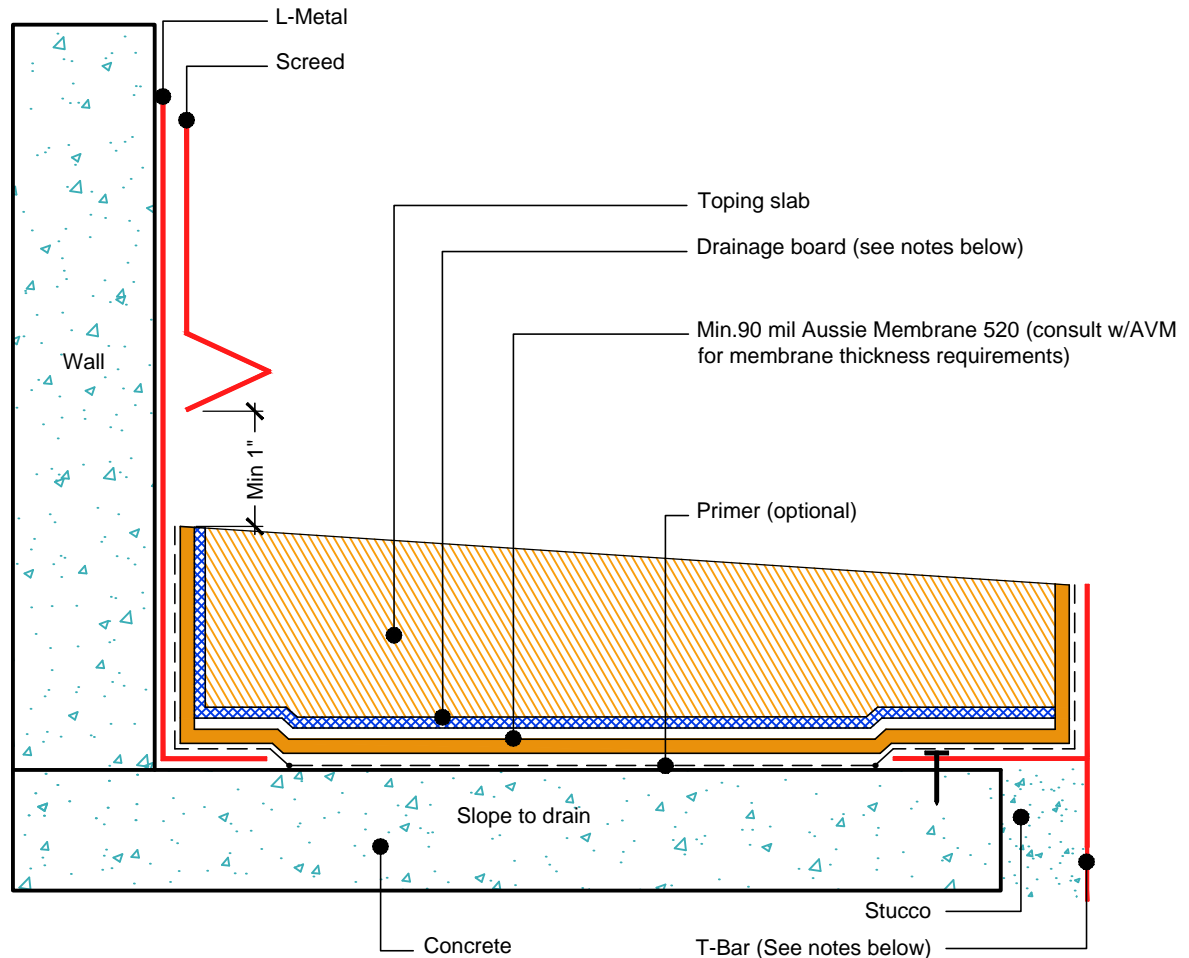
888.414.1041 818.888.0050
www.avmindustries.com

DETAIL #:
AVM-0520-2022-C

AVM SYSTEM 520

AUSSIE MEMBRANE 520

Topping Slab on Concrete Substrate
over AVM AUSSIE MEMBRANE 520
with Drain Board, Fluid Applied
Waterproofing (Medium Duty).



- NOTES:**
1. Aussie Membrane 520 is a Polyurethane liquid (Roller or Brush Applied) for Below-Grade, Between-Slab, Planters, Roof-Gardens and similar type Waterproofing.
 2. For proper membrane thickness and appropriate protection and drainage, refer to AVM Aussie Membrane 520 "Min Thickness Table"
 3. Contact AVM if no drain board or protection board is specified.
 4. For drainage and protection on topping Slabs up to 4" thick for pedestrian applications, use AVM Drain Board 6000.
 5. For drainage and protection on topping slabs over 4" thick or for vehicular applications, use AVM Drain Board 9000.
 6. This assembly is for pedestrian traffic use only. For vehicular applications and other heavy loads, contact AVM for approval.
 7. Reinforce the Aussie Membrane 520 with AVM Mat 800 at all corners, metal transitions, penetrations, gaps, drains, etc.
 8. Mortar cant strip and detail coat at the cold joint may be replaced with other cold joint details with prior approval from AVM.
 9. Many edge details are possible. All must allow for proper water evacuation. (None should trap water) Consult AVM for details.

AVM Industries, Inc.
8245 Remmet Ave, Canoga Park, CA 91304

Quality Waterproofing Products

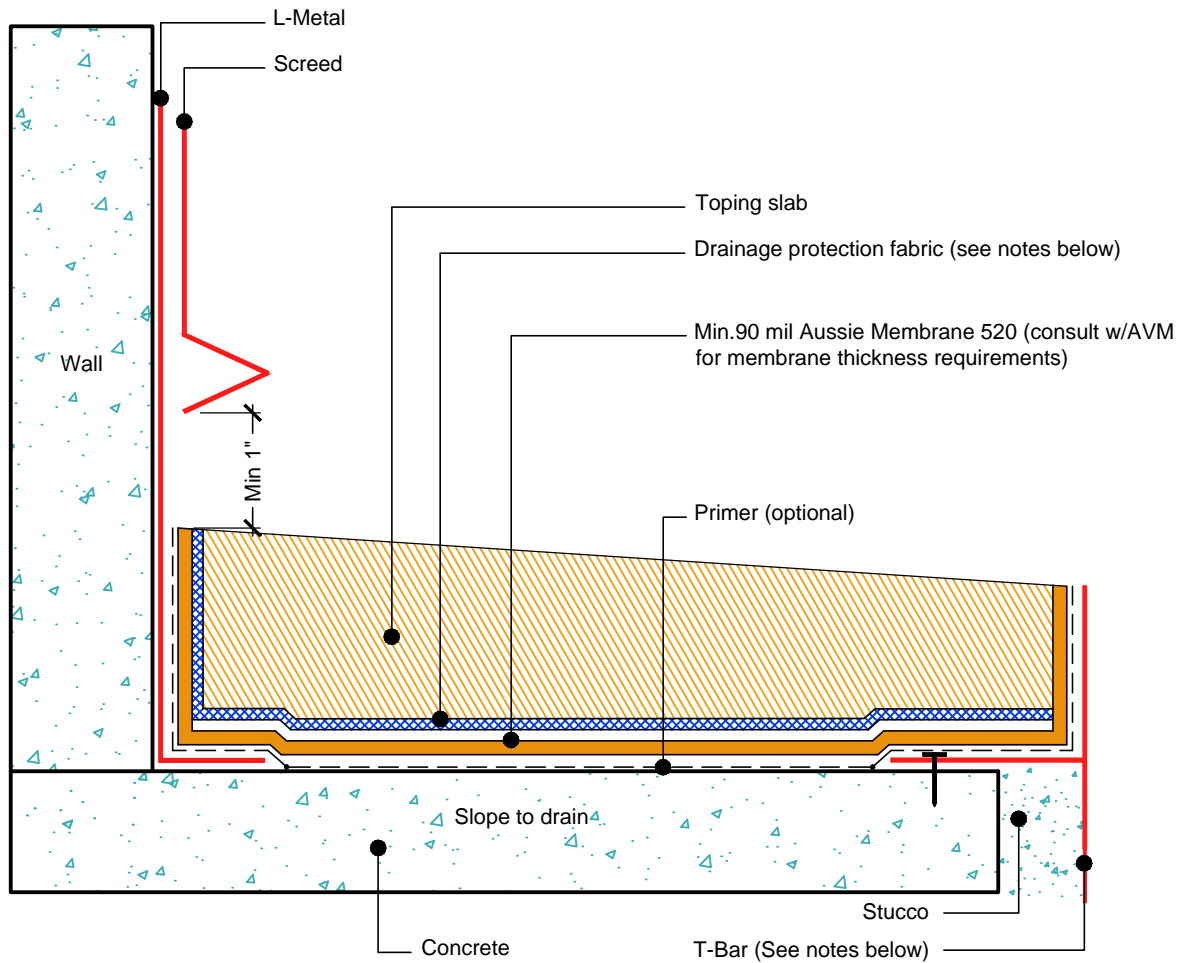
888.414.1041 818.888.0050
www.avmindustries.com

DETAIL #:
AVM-0520-2042-C

AVM SYSTEM 520

AUSSIE MEMBRANE 520

Topping Slab on Concrete Substrate
over AVM AUSSIE MEMBRANE 520
with Drainage Fabric, Fluid Applied
Waterproofing (Light Duty).



NOTES:

1. Aussie Membrane 520 is a Polyurethane liquid (Roller or Brush Applied) for Below-Grade, Between-Slab, Planters, Roof-Gardens and similar type Waterproofing.
2. For proper membrane thickness and appropriate protection and drainage, refer to AVM Aussie Membrane 520 "Min Thickness Table"
3. Contact AVM if no drain board or protection board is specified.
4. For drainage/protection, use AVM Drainage & Protection Fabric DPF-16. For topping slabs over 4" thick or vehicular applications, use AVM Drain Board 9000.
5. This assembly is for pedestrian traffic use only. For vehicular applications and other heavy loads, contact AVM for approval.
6. Reinforce the Aussie Membrane 520 with AVM Mat 800 at all corners, metal transitions, penetrations, gaps, drains, etc.
7. Many edge details are possible. All must allow for proper water evacuation. (None should trap water) Consult AVM for details.

AVM Industries, Inc.
8245 Remmet Ave, Canoga Park, CA 91304

Quality Waterproofing Products

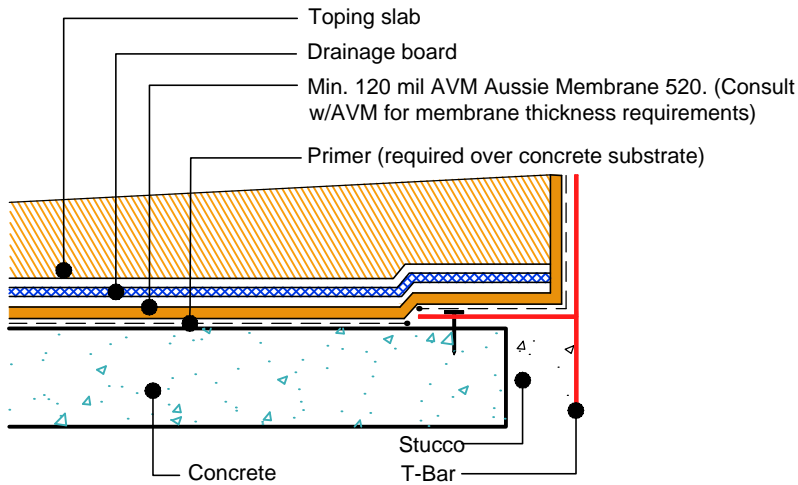
888.414.1041 818.888.0050
www.avmindustries.com

DETAIL #:
AVM-0520-2072-C

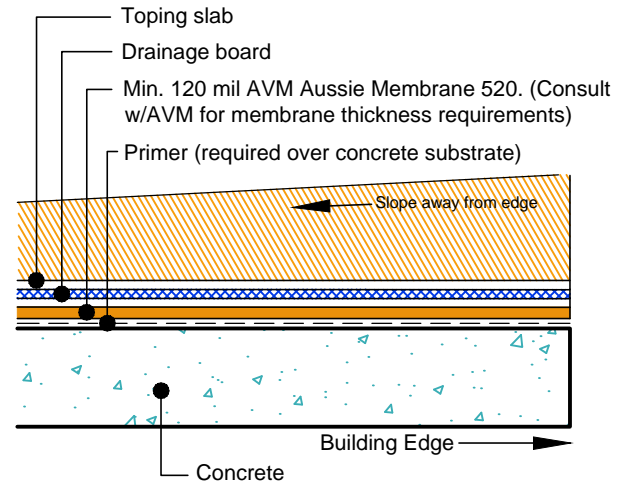
AVM SYSTEM 520

AUSSIE MEMBRANE 520

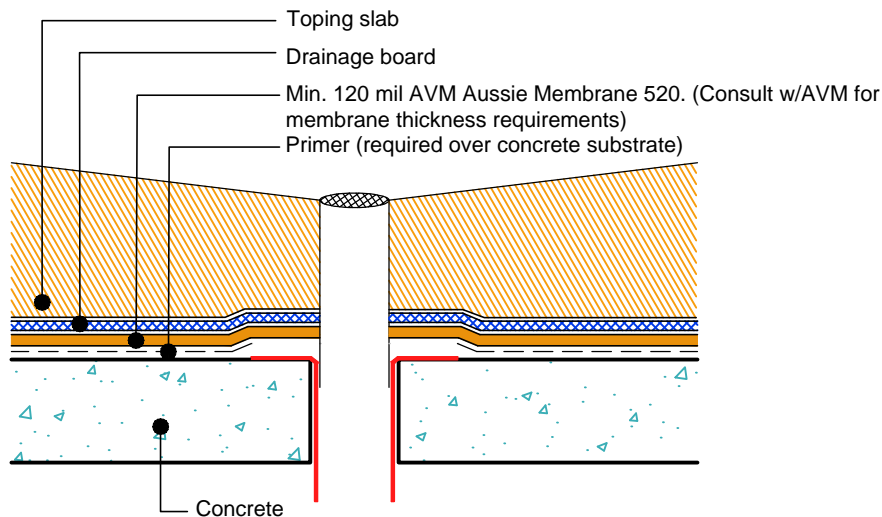
Other Edge and Drain Details Topping Slabs
Waterproofing on Concrete Substrates
AVM AUSSIE MEMBRANE 520
Fluid Applied Waterproofing. (Heavy Duty)



Slope Away from Edge Detail with Edge Metals
Heavy Duty



Slope Away from Edge Detail without Edge Metals
Heavy Duty



Drain Detail on Concrete
Heavy Duty

NOTES:

1. See drawing and notes on detail number AVM-520-2002-C for more information.
2. If water is to drain away from the edge into area floor drains, then edge metals do not require weep holes.
3. Reinforce the Aussie Membrane with AVM Mat 800 at all corners, metal transitions, penetrations, gaps, drains, etc.
4. A 2-part concrete drain with a bowl and a flange and built-in weep holes should be used. (Consult AVM for proper drain selection)

AVM Industries, Inc.
8245 Remmet Ave, Canoga Park, CA 91304

Quality Waterproofing Products

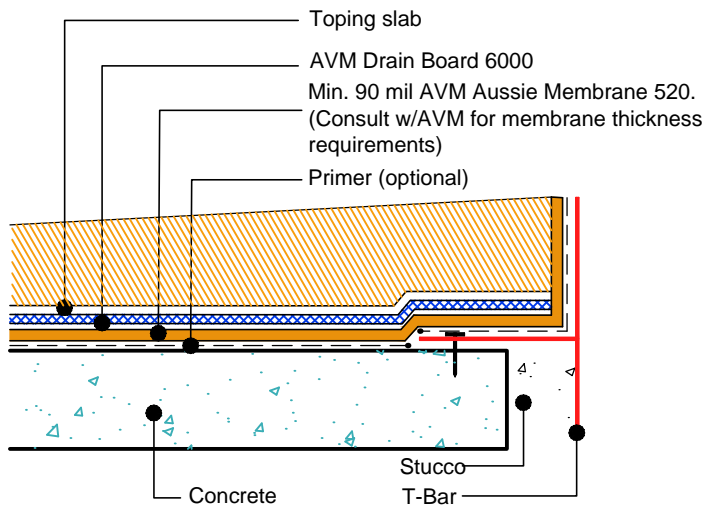
888.414.1041 818.888.0050
www.avmindustries.com

DETAIL #:
AVM-0520-2074-C

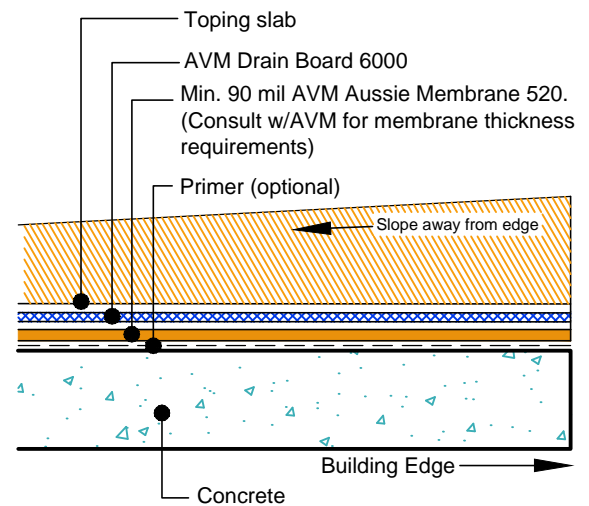
AVM SYSTEM 520

AUSSIE MEMBRANE 520

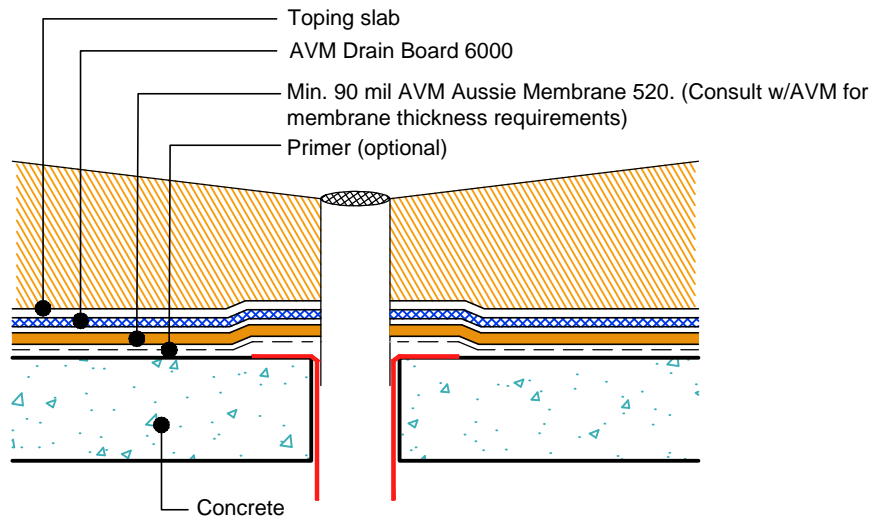
Other Edge and Drain Details Topping Slabs
Waterproofing on Concrete Substrates
AVM AUSSIE MEMBRANE 520
Fluid Applied Waterproofing. (Medium Duty)



Slope Away from Edge Detail with Edge Metals
Medium Duty



Slope Away from Edge Detail without Edge Metals
Medium Duty



Drain Detail on Concrete
Medium Duty

NOTES:

1. See drawing and notes on detail number AVM-520-2022-C for more information.
2. If water is to drain away from the edge into area floor drains, then edge metals do not require weep holes.
3. Reinforce the Aussie Membrane with AVM Mat 800 at all corners, metal transitions, penetrations, gaps, drains, etc.
4. A 2-part concrete drain with a bowl and a flange and built-in weep holes should be used. (Consult AVM for proper drain selection)

AVM Industries, Inc.
8245 Remmet Ave, Canoga Park, CA 91304

Quality Waterproofing Products

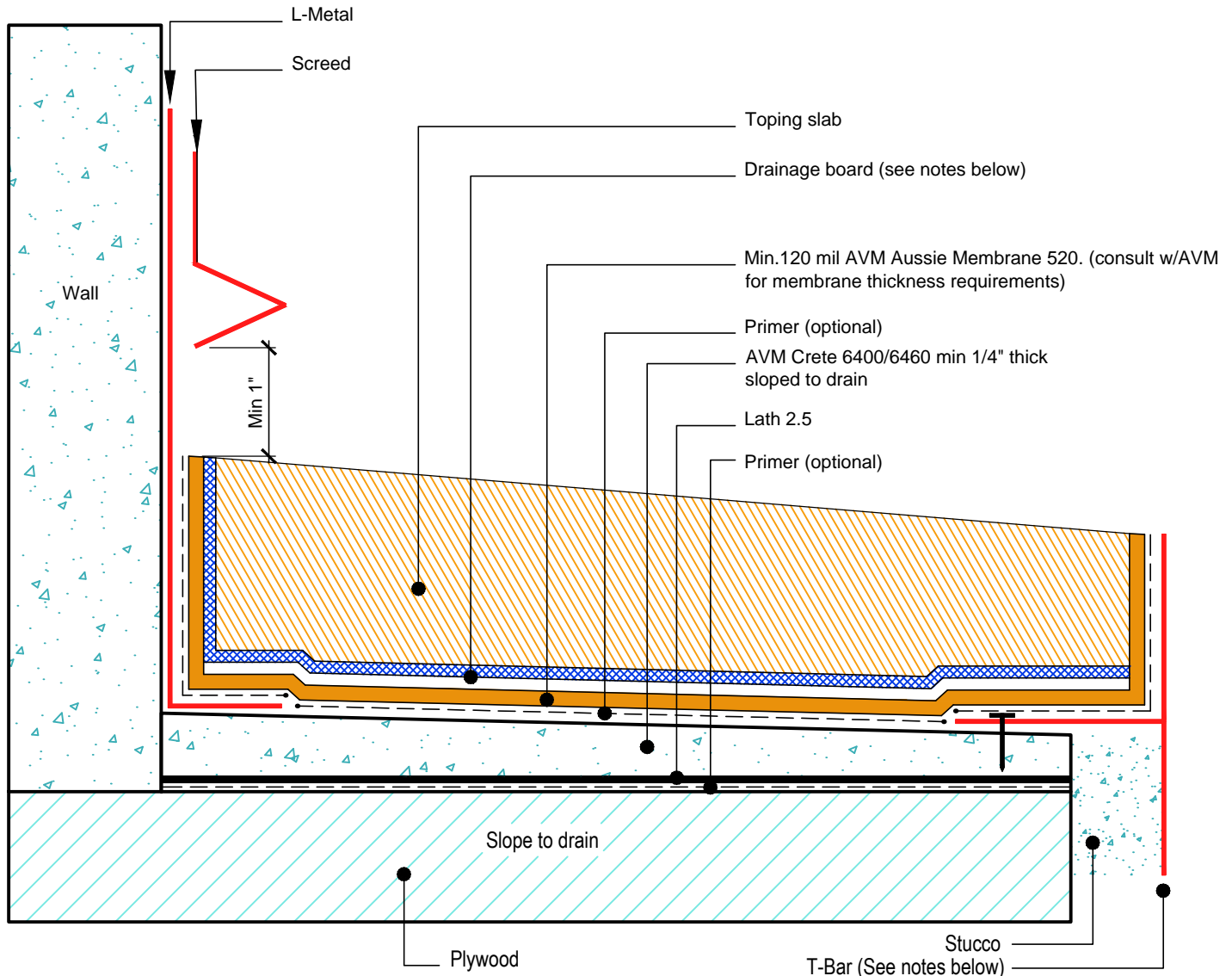
888.414.1041 818.888.0050
www.avmindustries.com

DETAIL #:
AVM-0520-2502-P

AVM SYSTEM 520

AUSSIE MEMBRANE 520

Topping Slab on Plywood Substrate over
AVM AUSSIE MEMBRANE 520
with Drain Board & Thin Crete Base, Fluid
Applied Waterproofing (Heavy Duty)
Concrete under Metals



NOTES:

1. Aussie Membrane 520 is a Polyurethane liquid (Roller or Brush Applied) for Below-Grade, Between-Slab, Planters, Roof-Gardens and similar type Waterproofing.
2. For proper membrane thickness and appropriate protection and drainage, refer to AVM Aussie Membrane 520 "Min Thickness Table"
3. Contact AVM if no drain board or protection board is specified.
4. Crete 6400/6460. Refer to the Crete 6400 or Crete 6460 Technical Data Sheets or Installation Instructions for more info.
5. For drainage and protection on topping Slabs up to 4" thick for pedestrian applications, use AVM Drain Board 6000.
6. For drainage and protection on topping slabs over 4" thick or for vehicular applications, use AVM Drain Board 9000.
7. This assembly is for pedestrian traffic use only. For vehicular applications and other heavy loads, contact AVM for approval.
8. Substrates must be sloped to drains and/or edges before membrane installation. (Min 1/4" per foot)
9. If water is to drain over the edge, then edge metals MUST have sufficient weep holes (at least every 6") and must be strong enough (thick enough) to act as a concrete form.
10. Many edge details are possible. All must allow for proper water evacuation. (None should trap water) Consult AVM for details.
11. Reinforce the Aussie Membrane 520 with AVM Mat 800 at all corners, metal transitions, penetrations, gaps, drains, etc.

AVM Industries, Inc.
8245 Remmet Ave, Canoga Park, CA 91304

Quality Waterproofing Products

888.414.1041 818.888.0050
www.avmindustries.com

FILE NAME: 0520-2502-P-Topping-Slab-On-Plywood-HD-CS

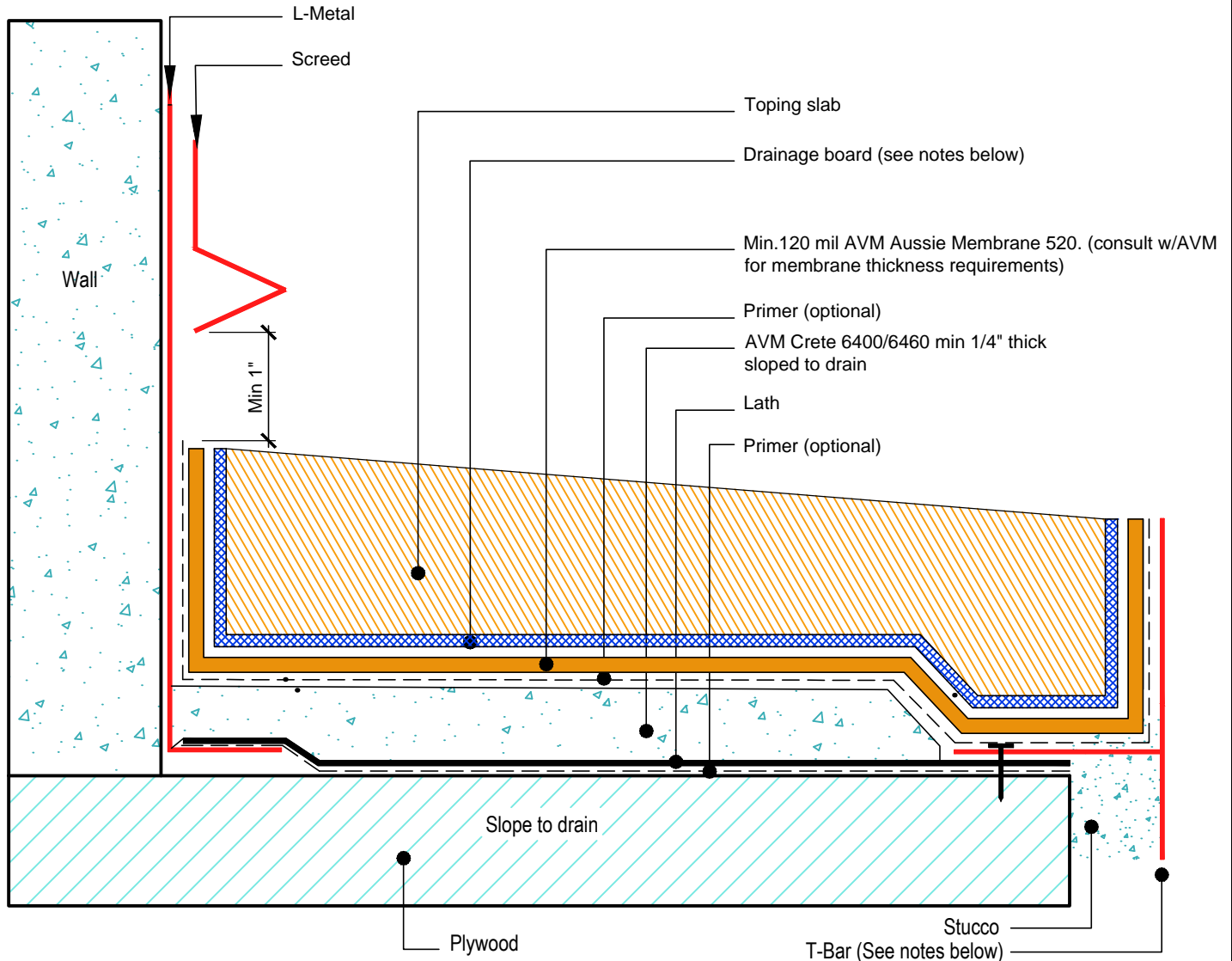
Revision Date: 5/31/2016
Protected by Copyright © AVM Industries, Inc.

DETAIL #:
AVM-0520-2504-P

AVM SYSTEM 520

AUSSIE MEMBRANE 520

Topping Slab on Plywood Substrate over
AVM AUSSIE MEMBRANE 520
with Drain Board & Thin Crete Base, Fluid
Applied Waterproofing (Heavy Duty)
Concrete over Metals



NOTES:

1. Aussie Membrane 520 is a Polyurethane liquid (Roller or Brush Applied) for Below-Grade, Between-Slab, Planters, Roof-Gardens and similar type Waterproofing.
2. For proper membrane thickness and appropriate protection and drainage, refer to AVM Aussie Membrane 520 "Min Thickness Table"
3. Contact AVM if no drain board or protection board is specified.
4. Crete 6400/6460. Refer to the Crete 6400 or Crete 6460 Technical Data Sheets or Installation Instructions for more info.
5. For drainage and protection on topping Slabs up to 4" thick for pedestrian applications, use AVM Drain Board 6000.
6. For drainage and protection on topping slabs over 4" thick or for vehicular applications, use AVM Drain Board 9000.
7. This assembly is for pedestrian traffic use only. For vehicular applications and other heavy loads, contact AVM for approval.
8. Substrates must be sloped to drains and/or edges before membrane installation. (Min 1/4" per foot)
9. If water is to drain over the edge, then edge metals MUST have sufficient weep holes (at least every 6") and must be strong enough (thick enough) to act as a concrete form.
10. Many edge details are possible. All must allow for proper water evacuation. (None should trap water) Consult AVM for details.
11. Reinforce the Aussie Membrane 520 with AVM Mat 800 at all corners, metal transitions, penetrations, gaps, drains, etc.

AVM Industries, Inc.
8245 Remmet Ave, Canoga Park, CA 91304

Quality Waterproofing Products

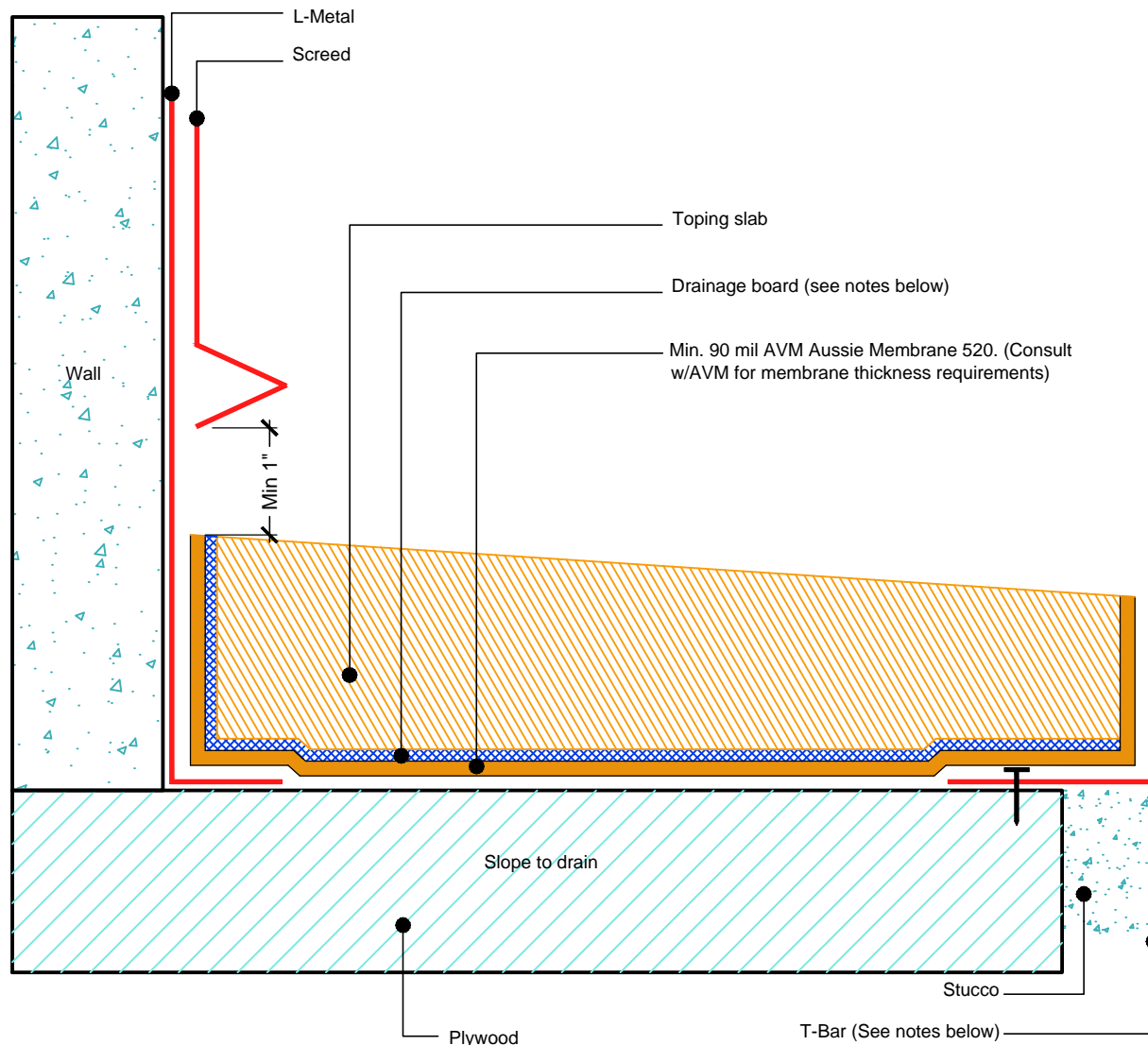
888.414.1041 818.888.0050
www.avmindustries.com

DETAIL #:
AVM-0520-2522-P

AVM SYSTEM 520

AUSSIE MEMBRANE 520

Topping Slab on Plywood Substrate over
AVM AUSSIE MEMBRANE 520
with Drain Board, Fluid Applied
Waterproofing (Medium Duty)



NOTES:

1. Aussie Membrane 520 is a Polyurethane liquid (Roller or Brush Applied) for Below-Grade, Between-Slab, Planters, Roof-Gardens and similar type Waterproofing.
2. For proper membrane thickness and appropriate protection and drainage, refer to AVM Aussie Membrane 520 "Min Thickness Table"
3. Contact AVM if no drain board or protection board is specified.
4. For drainage and protection on topping Slabs up to 4" thick for pedestrian applications, use AVM Drain Board 6000.
5. For drainage and protection on topping slabs over 4" thick or for vehicular applications, use AVM Drain Board 9000.
6. This assembly is for pedestrian traffic use only. For vehicular applications and other heavy loads, contact AVM for approval.
7. Substrates must be sloped to drains and/or edges before membrane installation. (Min 1/4" per foot)
8. If water is to drain over the edge, then edge metals MUST have sufficient weep holes (at least every 6") and must be strong enough (thick enough) to act as a concrete form.
9. Many edge details are possible. All must allow for proper water evacuation. (None should trap water) Consult AVM for details.
10. Make sure all nails are flush with the plywood surface or slightly sunken in below it. (Nails protruding above the plywood surface may puncture the membrane)
11. Reinforce the Aussie Membrane 520 with AVM Mat 800 at all plywood joints, corners, metal transitions, penetrations, drains, etc.

AVM Industries, Inc.
8245 Remmet Ave, Canoga Park, CA 91304

Quality Waterproofing Products

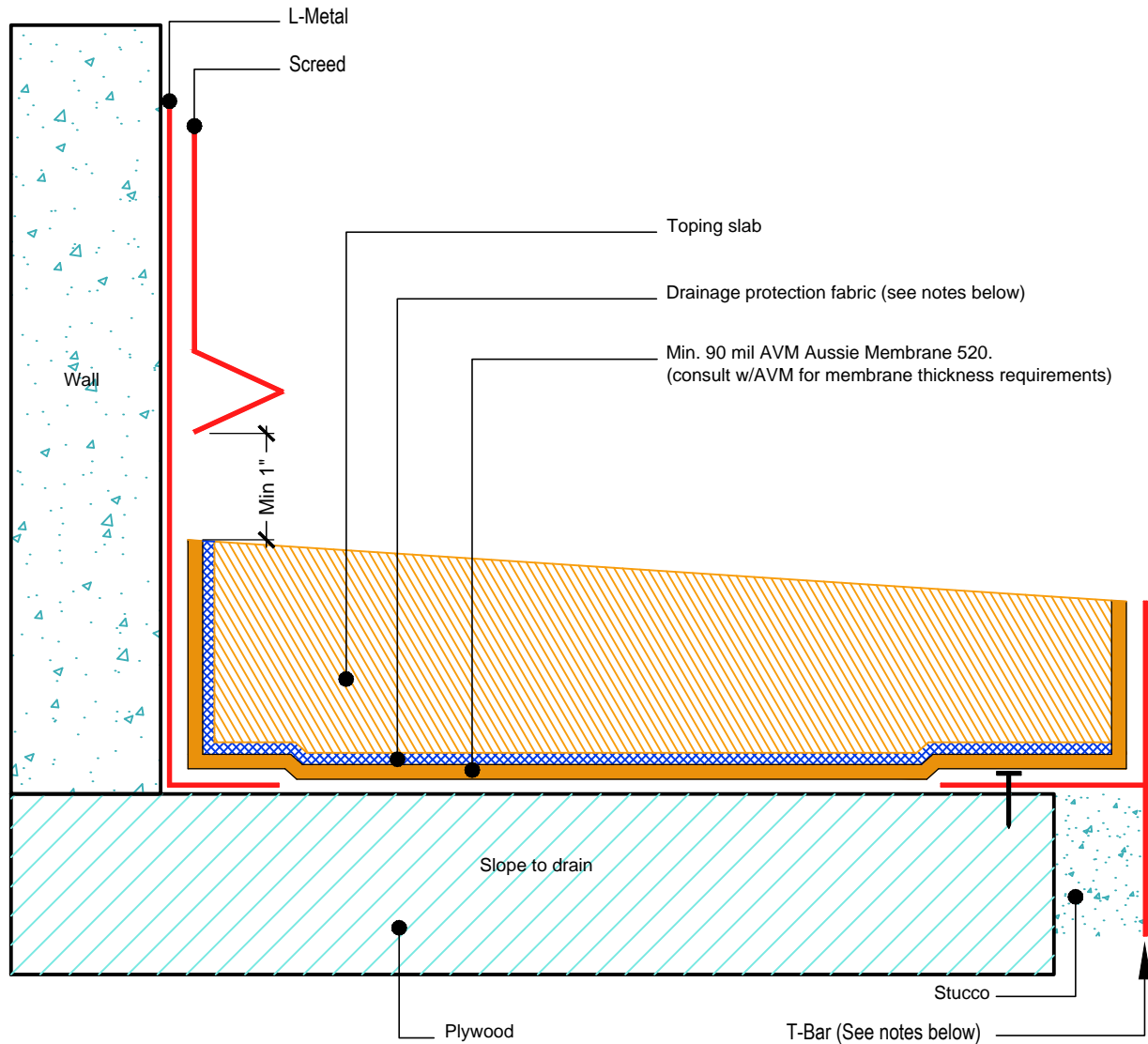
888.414.1041 818.888.0050
www.avmindustries.com

DETAIL #:
AVM-0520-2542-P

AVM SYSTEM 520

AUSSIE MEMBRANE 520

Topping Slab on Plywood Substrate
over AVM AUSSIE MEMBRANE 520
with Drain Fabric, Fluid Applied
Waterproofing (Light Duty)



NOTES:

1. Aussie Membrane 520 is a Polyurethane liquid (Roller or Brush Applied) for Below-Grade, Between-Slab, Planters, Roof-Gardens and similar type Waterproofing.
2. For proper membrane thickness and appropriate protection and drainage, refer to AVM Aussie Membrane 520 "Min Thickness Table"
3. Contact AVM if no drain board or protection board is specified.
4. For drainage/protection, use AVM Drainage & Protection Fabric DPF-16. For topping slabs over 4" thick or vehicular applications, use AVM Drain Board 9000.
5. This assembly is for pedestrian traffic use only. For vehicular applications and other heavy loads, contact AVM for approval.
6. Substrates must be sloped to drains and/or edges before membrane installation. (Min 1/4" per foot)
7. If water is to drain over the edge, then edge metals MUST have sufficient weep holes (at least every 6") and must be strong enough (thick enough) to act
8. Many edge details are possible. All must allow for proper water evacuation. (None should trap water) Consult AVM for details.
9. Make sure all nails are flush with the plywood surface or slightly sunken in below it. (Nails protruding above the plywood surface may puncture the membrane)
10. Reinforce the Aussie Membrane 520 with AVM Mat 800 at all plywood joints, corners, metal transitions, penetrations, drains, etc.

AVM Industries, Inc.
8245 Remmet Ave, Canoga Park, CA 91304

Quality Waterproofing Products

888.414.1041 818.888.0050
www.avmindustries.com

FILE NAME: 0520-2542-P-Topping-Slab-On-Plywood-LD-CS

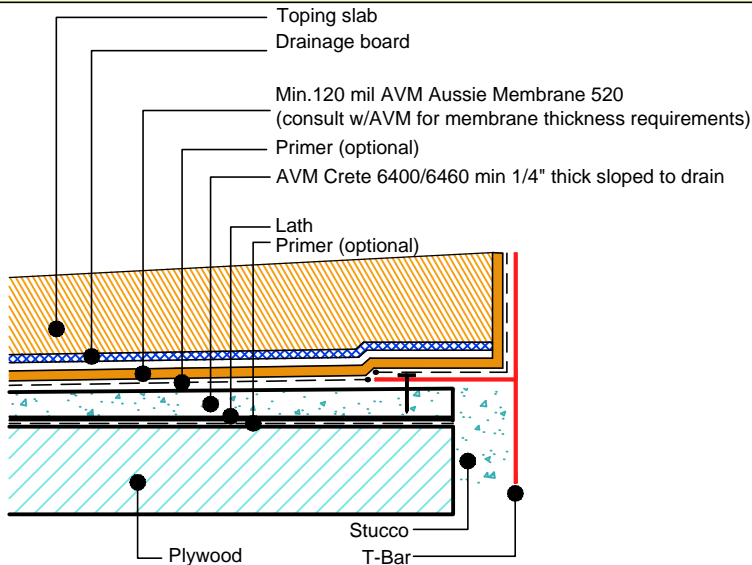
Revision Date: 5/31/2016
Protected by Copyright @ AVM Industries, Inc.

DETAIL #:
AVM-0520-2572-P

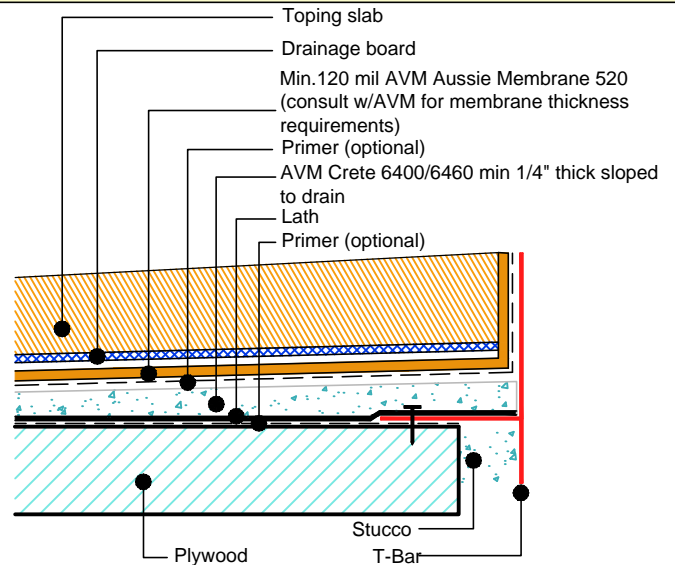
AVM SYSTEM 520

AUSSIE MEMBRANE 520

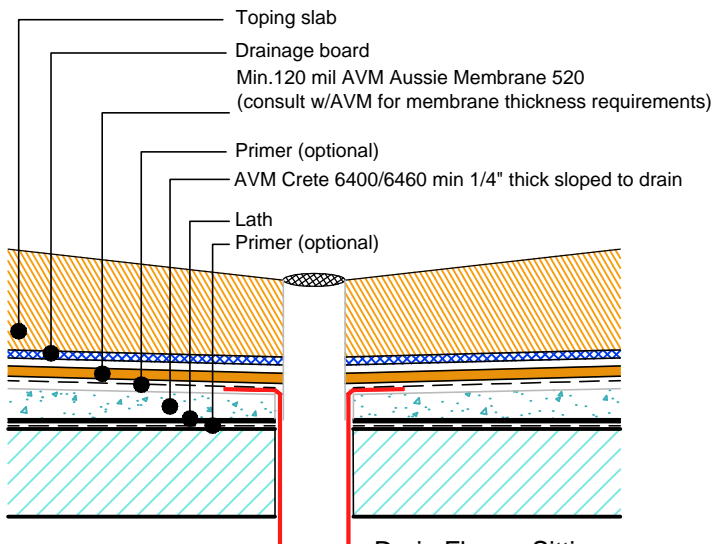
Other Edge and Drain Details Topping Slabs
Waterproofing on Plywood Substrates
AVM AUSSIE MEMBRANE 520
Fluid Applied Waterproofing (Heavy Duty)



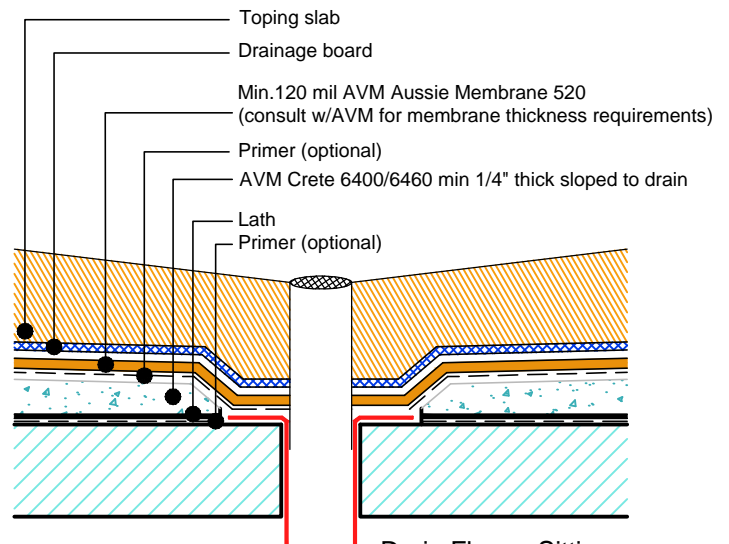
Slope Away from Edge Detail
Concrete Under Metals



Slope Away from Edge Detail
Concrete Over Metals



Drain Flange Sitting on
Crete 6400/6460



Drain Flange Sitting on
Plywood Substrate

NOTES:

1. See drawing and notes on detail number AVM-520-2502-P for more information.
2. If water is to drain away from the edge into area floor drains, then edge metals do not require weep holes.
3. Reinforce the Aussie Membrane with AVM Mat 800 at all corners, metal transitions, penetrations, gaps, drains, etc .

AVM Industries, Inc.
8245 Remmet Ave, Canoga Park, CA 91304

Quality Waterproofing Products

888.414.1041 818.888.0050
www.avmindustries.com

FILE NAME: 0520-2572-P-Topping-Slab-On-Plywood-Drains-Edges-HD-CS

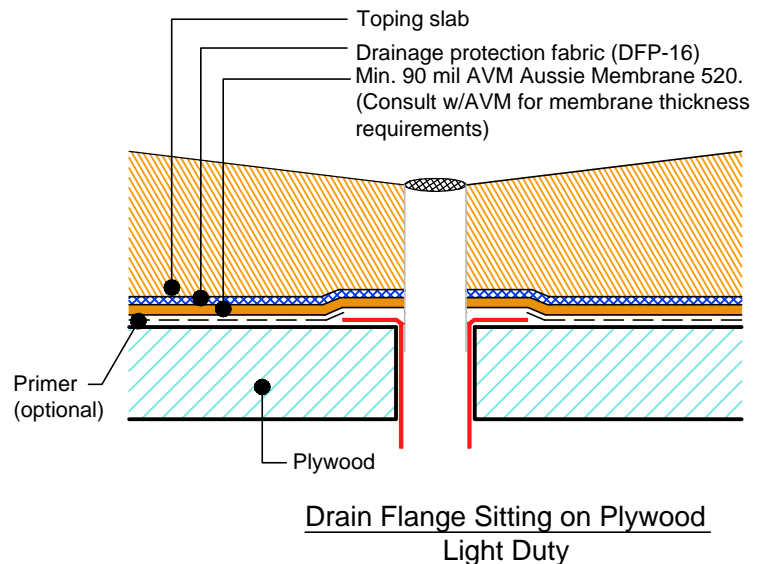
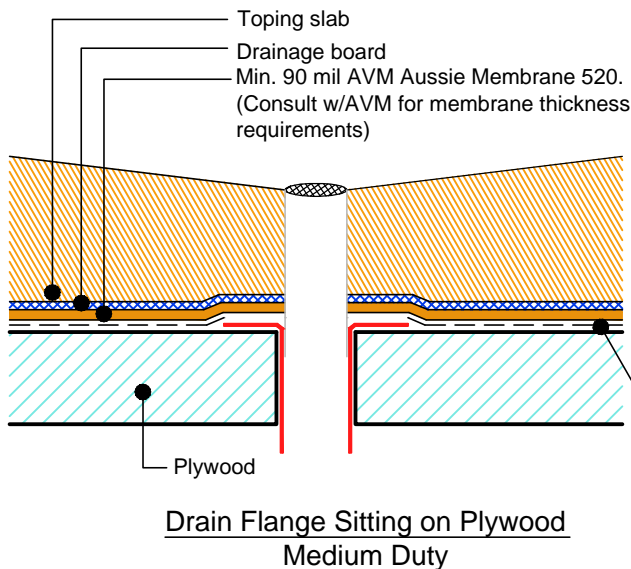
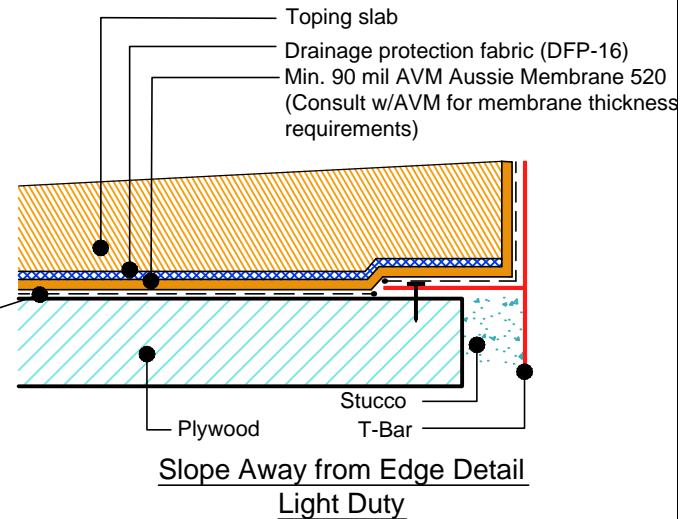
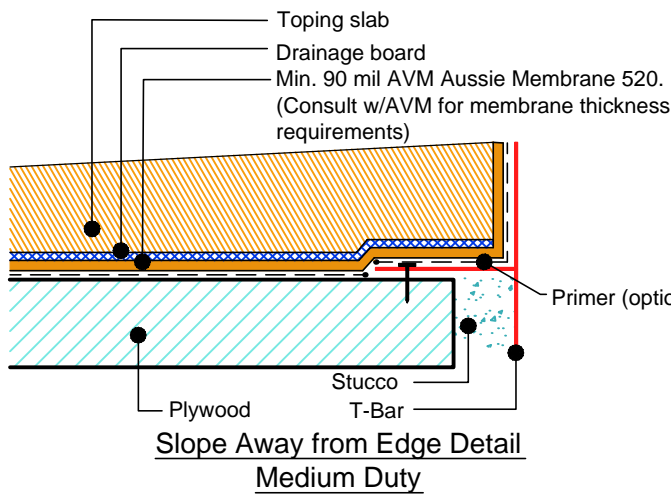
Revision Date: 5/31/2016
Protected by Copyright @ AVM Industries, Inc.

DETAIL #:
AVM-0520-2574-P

AVM SYSTEM 520

AUSSIE MEMBRANE 520

Other Edge and Drain Details Topping
Slabs Waterproofing on Plywood
Substrates.
AVM AUSSIE MEMBRANE 520
Fluid Applied Waterproofing (Medium
and Light Duty)



NOTES:

1. See drawing and notes on detail number AVM-520-2522-P for more information on medium duty applications.
2. See drawing and notes on detail number AVM-520-2542-P for more information on light duty applications.
3. If water is to drain away from the edge into area floor drains, then edge metals do not require weep holes.
4. Reinforce the Aussie Membrane with AVM Mat 800 at all corners, metal transitions, penetrations, gaps, drains, etc.

AVM Industries, Inc.
8245 Remmet Ave, Canoga Park, CA 91304

Quality Waterproofing Products

888.414.1041 818.888.0050
www.avmindustries.com

FILE NAME: 0520-2574-P-Topping-Slab-On-Plywood-Drains-Edges-MD-LD-CS

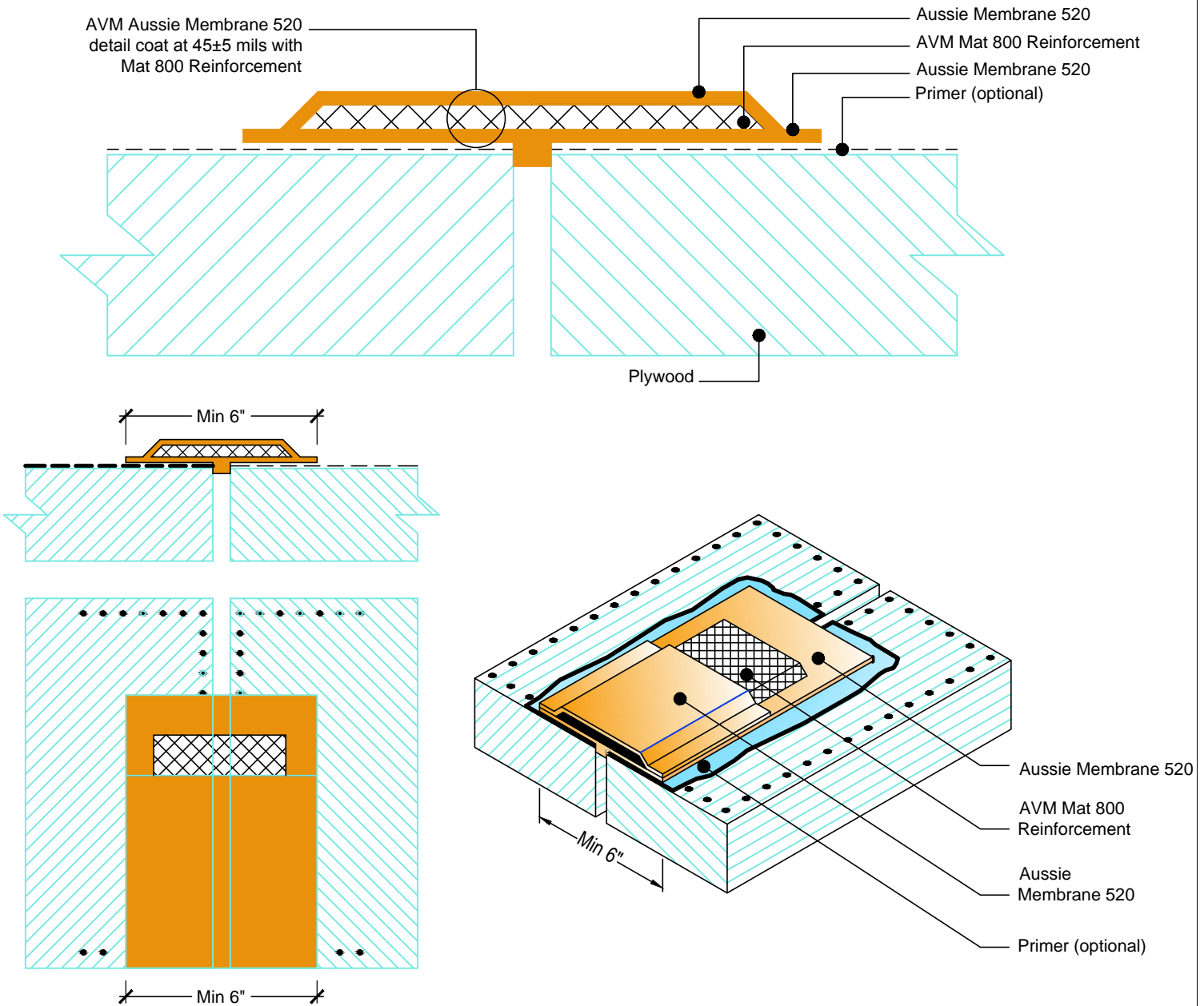
Revision Date: 5/31/2016
Protected by Copyright © AVM Industries, Inc.

DETAIL #:
AVM-0520-2580-P

AVM SYSTEM 520

AUSSIE MEMBRANE 520

Plywood Joint Detail for Topping Slabs
Waterproofing on Plywood Substrates
AVM AUSSIE MEMBRANE 520
Fluid Applied Waterproofing.



NOTES:

1. This detail may not be applicable or needed if installing metal lath and AVM Crete 6400 over the plywood substrates before installing the Aussie Membrane. (See Detail # AVM-520-2502-P)
2. Aussie Membrane 520 is a Polyurethane liquid (Roller or Brush Applied) for Below-Grade, Between-Slab, Planters, Roof-Gardens and similar type Waterproofing.
3. For proper membrane thickness and drainage / protection requirements, refer to other "Topping Slab on Plywood" Details.
4. Make sure all nails are flush with the plywood surface or slightly sunken in below it. (Nails protruding above the plywood surface may puncture the membrane)
5. Remove/grind/repair as necessary any other protrusions, sharp edges, etc that may puncture or damage the membrane.
6. Reinforce the Aussie Membrane with AVM Mat 800 as shown at all plywood joints, flashings, penetrations, etc.
7. If extra protection is needed, use double reinforcement. (two layers of Mat 800 reinforcing fabric)

AVM Industries, Inc.
8245 Remmet Ave, Canoga Park, CA 91304

Quality Waterproofing Products

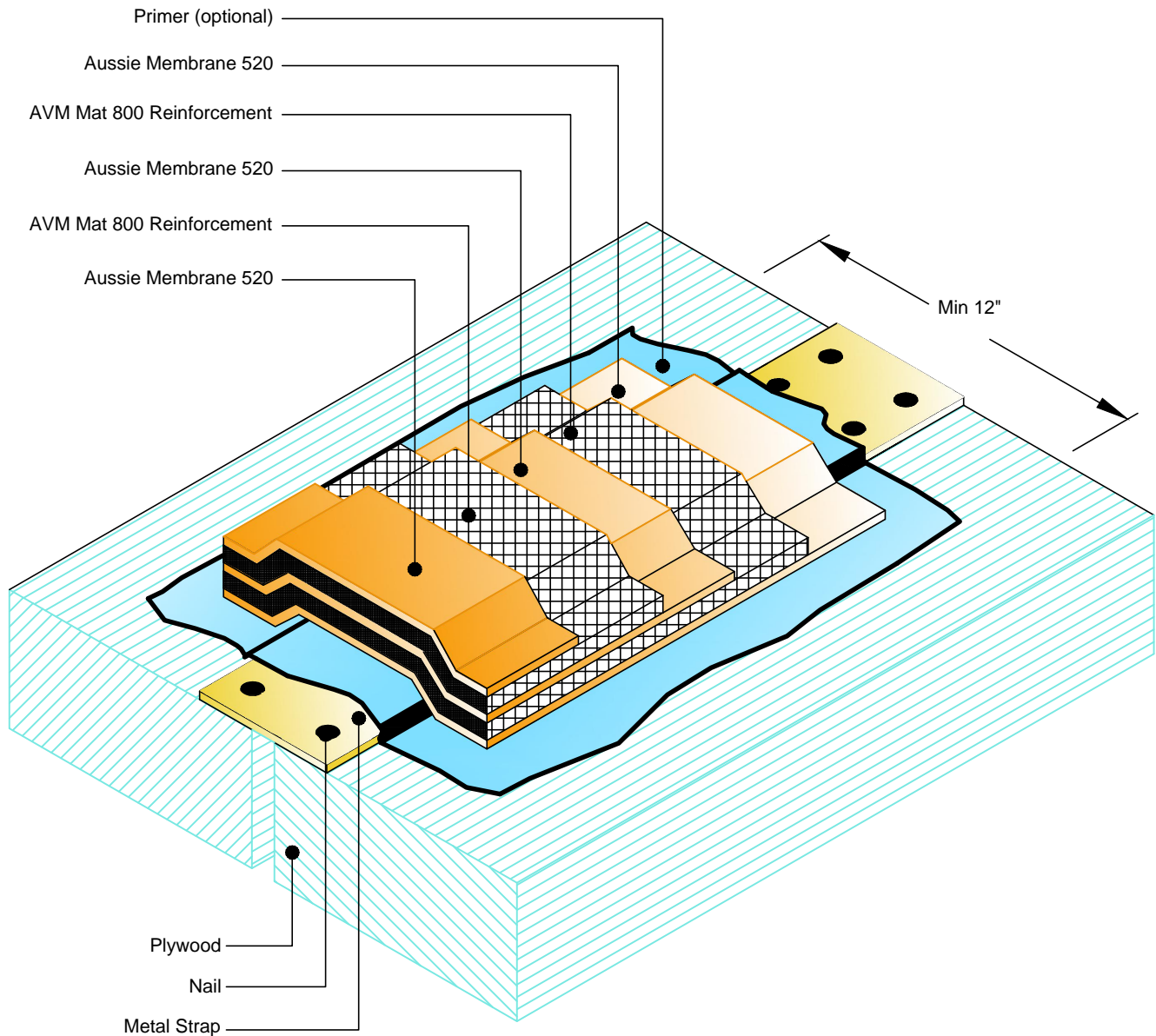
888.414.1041 818.888.0050
www.avmindustries.com

DETAIL #:
AVM-0520-2582-P

AVM SYSTEM 520

AUSSIE MEMBRANE 520

**Metal Straps at Plywood Joints Detail
for Topping Slabs Waterproofing on
Plywood Substrates
AVM AUSSIE MEMBRANE 520
Fluid Applied Waterproofing.**



NOTES:

1. This detail may not be applicable or needed if installing metal lath and AVM Crete 6400 over the plywood substrates before installing the Aussie Membrane. (See Detail # AVM-520-2502-P)
2. Aussie Membrane 520 is a Polyurethane liquid (Roller or Brush Applied) for Below-Grade, Between-Slab, Planters, Roof-Gardens and similar type Waterproofing.
3. For proper membrane thickness and drainage / protection requirements, refer to other "Topping Slab on Plywood" Details.
4. Make sure all nails are flush with the plywood surface or slightly sunken in below it. (Nails protruding above the plywood surface may puncture the membrane)
5. Remove/grind/repair as necessary any other protrusions, sharp edges, etc that may puncture or damage the membrane.
6. Metal straps must be reinforced with Aussie Membrane 520 and a single layer of Mat 800 to prevent damage to the membrane. For extra protection, double reinforce as shown. (use two layers of Mat 800)
7. After preparing the metal straps and surrounding plywood surfaces, apply a liberal coat of Aussie Membrane 520 before installing the first layer of fabric to ensure the strap edges and nail heads will not cut into or damage the fabric.

AVM Industries, Inc.
8245 Remmet Ave, Canoga Park, CA 91304

Quality Waterproofing Products

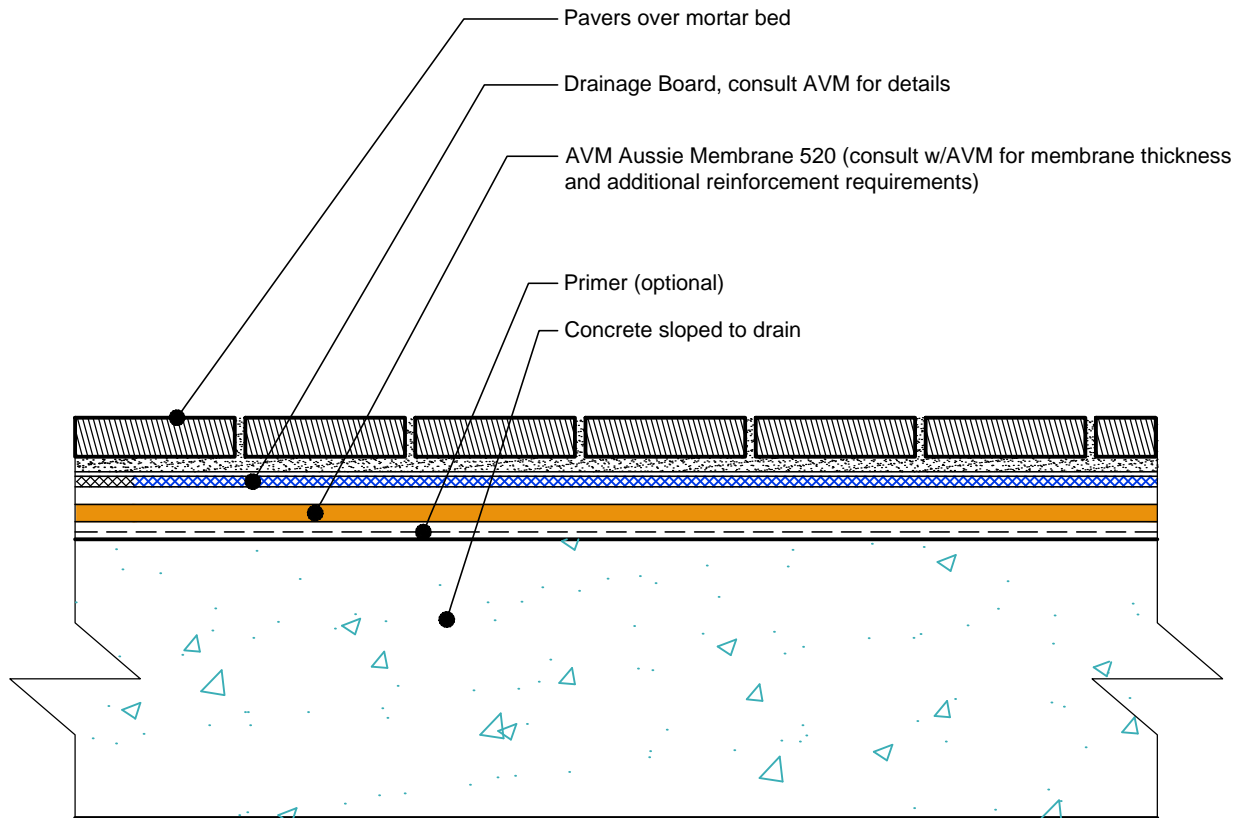
888.414.1041 818.888.0050
www.avmindustries.com

DETAIL #:
AVM-0520-3002-P

AVM SYSTEM 520

AUSSIE MEMBRANE 520

Pavers on Concrete Substrate over
AVM AUSSIE MEMBRANE 520
Fluid Applied Waterproofing.



NOTES:

1. Aussie Membrane 520 is a Polyurethane liquid (Roller or Brush Applied) for Below-Grade, Between-Slab, Planters, Roof-Gardens and similar type Waterproofing.
2. For proper membrane thickness and appropriate protection and drainage, refer to AVM Aussie Membrane 520 "Min Thickness Table"
3. Contact AVM if no drain board or protection board is specified.

AVM Industries, Inc.
8245 Remmet Ave, Canoga Park, CA 91304

Quality Waterproofing Products

888.414.1041 818.888.0050
www.avmindustries.com

FILE NAME: 0520-3002-C-Pavers-On-Concrete-CS

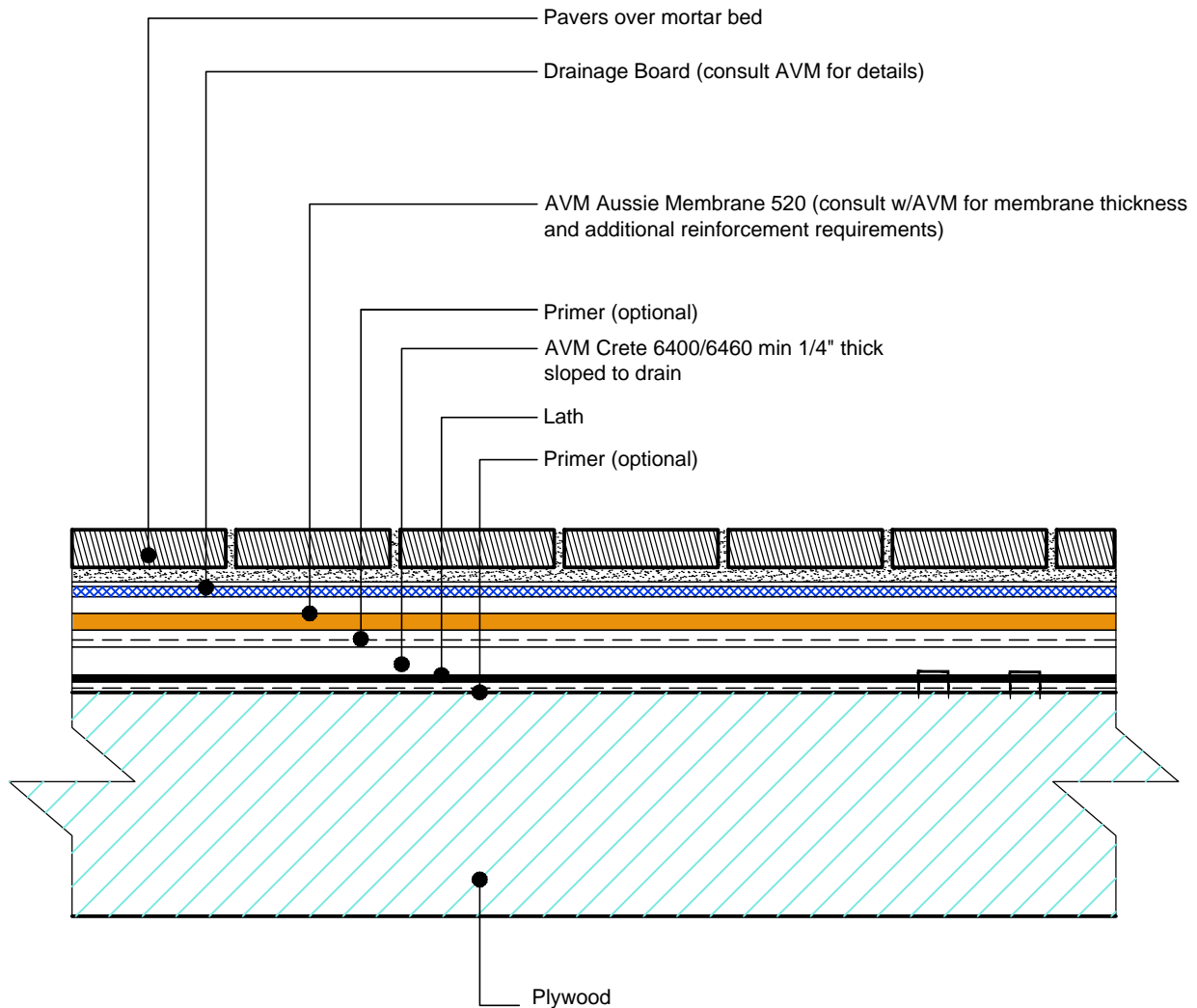
Revision Date: 5/31/2016
Protected by Copyright @ AVM Industries, Inc.

DETAIL #:
AVM-0520-3502-P

AVM SYSTEM 520

AUSSIE MEMBRANE 520

Pavers on Plywood Substrate over
AVM AUSSIE MEMBRANE 520
Fluid Applied Waterproofing.



NOTES:

1. Aussie Membrane 520 is a Polyurethane liquid (Roller or Brush Applied) for Below-Grade, Between-Slab, Planters, Roof-Gardens and similar type Waterproofing.
2. For proper membrane thickness and appropriate protection and drainage, refer to AVM Aussie Membrane 520 "Min Thickness Table"
3. Contact AVM if no drain board or protection board is specified.
4. Crete 6400/6460. Refer to the Crete 6400 or Crete 6460 Technical Data Sheets or Installation Instructions for more info.

AVM Industries, Inc.
8245 Remmet Ave, Canoga Park, CA 91304

Quality Waterproofing Products

888.414.1041 818.888.0050
www.avmindustries.com

FILE NAME: 0520-3502-P-Pavers-On-Plywood-CS

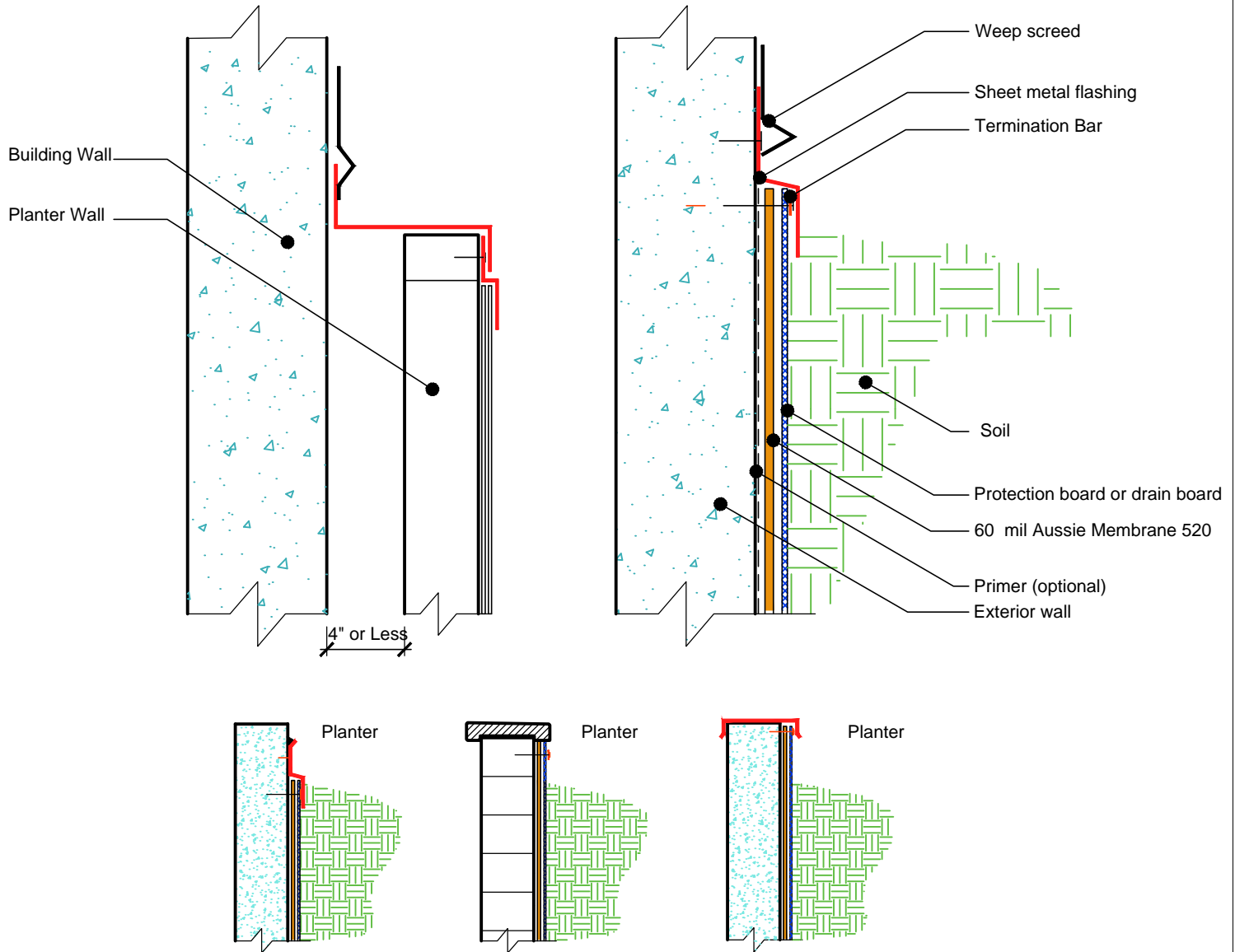
Revision Date: 5/31/2016
Protected by Copyright © AVM Industries, Inc.

DETAIL #:
AVM-0520_6002-C

AVM SYSTEM 520

AUSSIE MEMBRANE 520

Terminations
AVM AUSSIE MEMBRANE 520
Fluid Applied Waterproofing.



NOTES:

1. Aussie Membrane 520 is a Polyurethane liquid (Roller or Brush Applied) for Below-Grade, Between-Slab, Planters, Roof-Gardens and similar type Waterproofing.
2. For proper membrane thickness and appropriate protection and drainage, refer to AVM Aussie Membrane 520 "Min Thickness Table"
3. Contact AVM if no drain board or protection board is specified.

AVM Industries, Inc.
8245 Remmet Ave, Canoga Park, CA 91304

Quality Waterproofing Products

888.414.1041 818.888.0050
www.avmindustries.com

FILE NAME: 0520-6002-C-Termination-Walls-CS

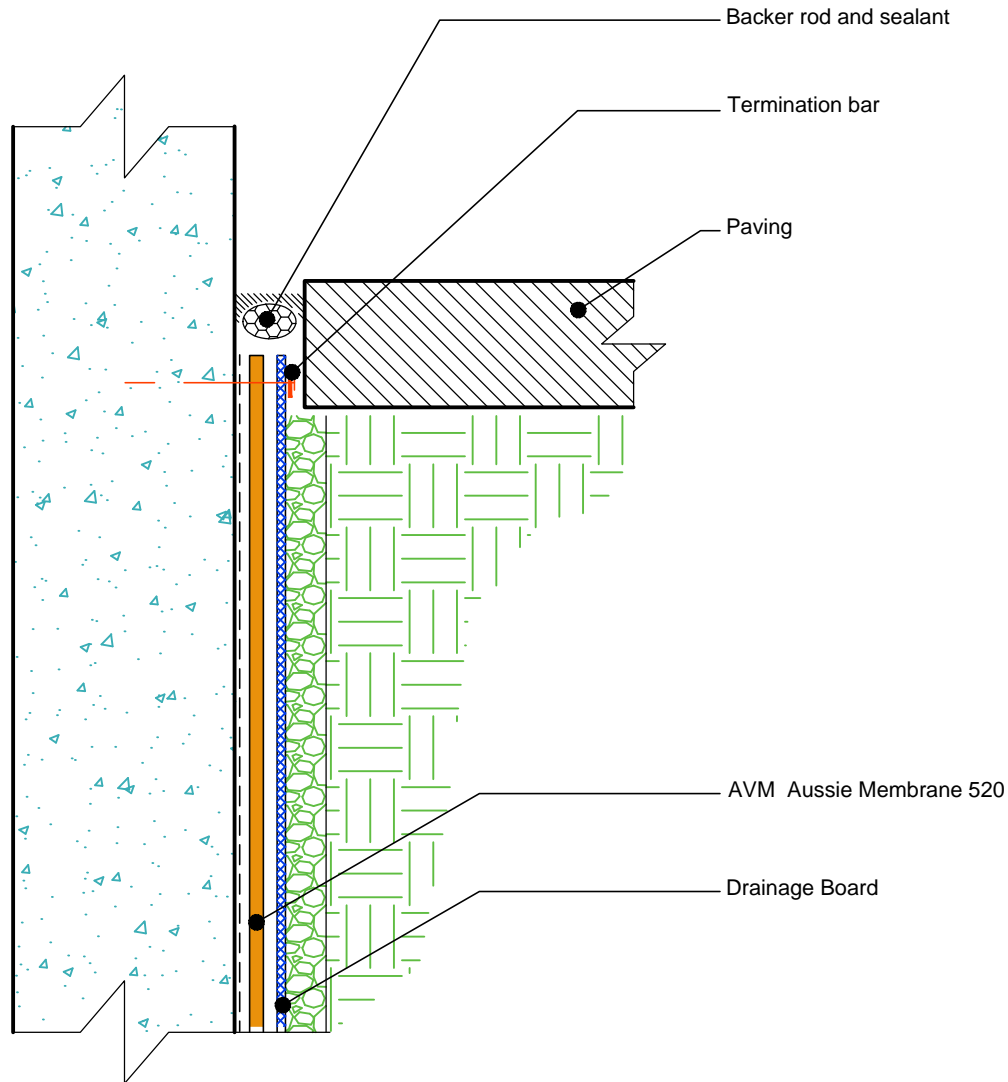
Revision Date: 5/31/2016
Protected by Copyright © AVM Industries, Inc.

DETAIL #:
AVM-0520-6004-C

AVM SYSTEM 520

AUSSIE MEMBRANE 520

Terminations at Sidewalks on Grade
AVM AUSSIE MEMBRANE 520
Fluid Applied Waterproofing.



NOTES:

1. Aussie Membrane 520 is a Polyurethane liquid (Roller or Brush Applied) for Below-Grade, Between-Slab, Planters, Roof-Gardens and similar type Waterproofing.
2. For proper membrane thickness and appropriate protection and drainage, refer to AVM Aussie Membrane 520 "Min Thickness Table"
3. Contact AVM if no drain board or protection board is specified.

AVM Industries, Inc.
8245 Remmet Ave, Canoga Park, CA 91304

Quality Waterproofing Products

888.414.1041 818.888.0050
www.avmindustries.com

FILE NAME: 0520-6004-C-Termination-Sidewalks-CS

Revision Date: 5/31/2016
Protected by Copyright @ AVM Industries, Inc.

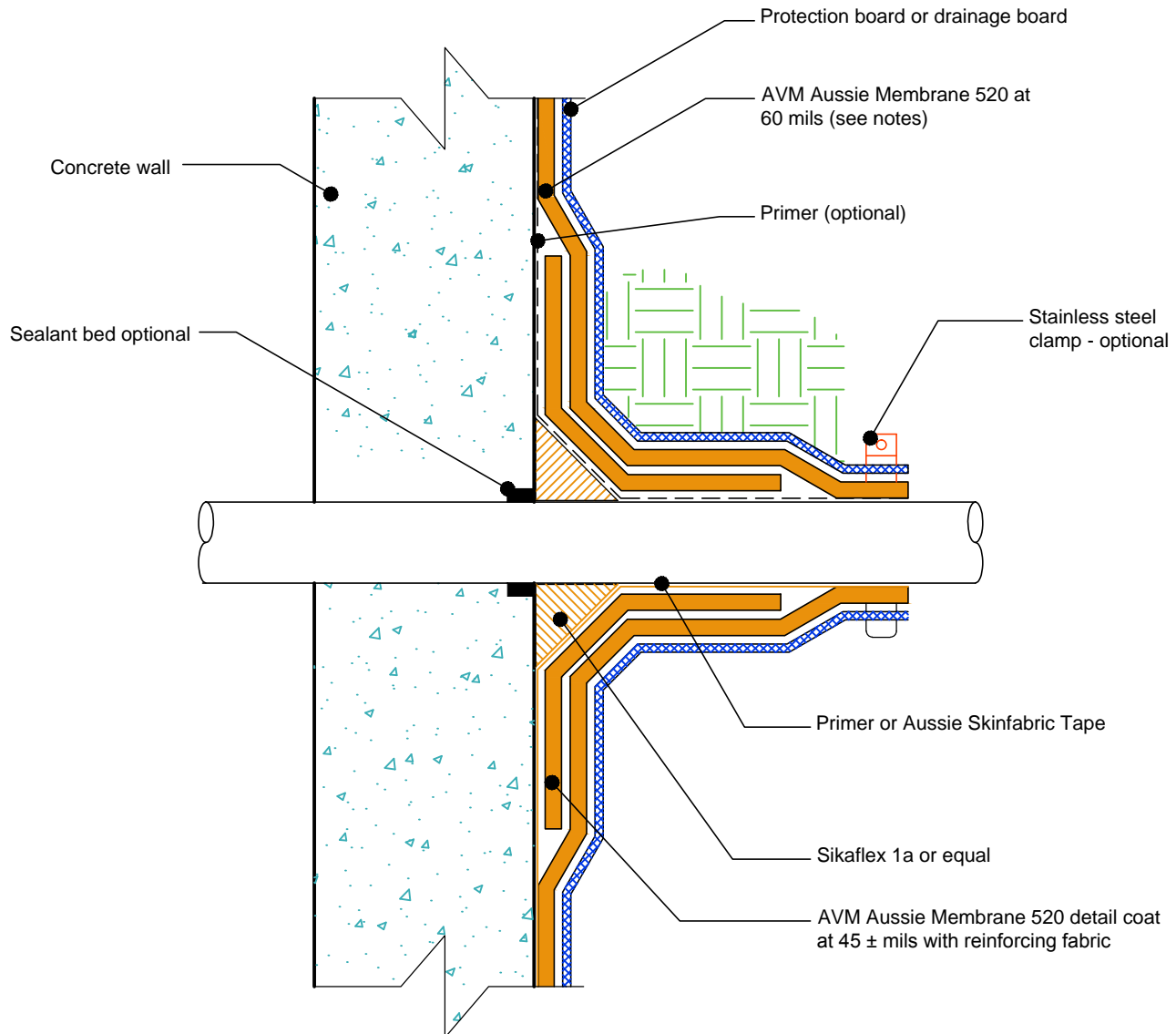
DETAIL #:

AVM-0520_6502-C

AVM SYSTEM 520

AUSSIE MEMBRANE 520

Pipe Penetration Thru Wall (Option 1)
AVM AUSSIE MEMBRANE 520
Fluid Applied Waterproofing.



NOTES:

1. Aussie Membrane 520 is a Polyurethane liquid (Roller or Brush Applied) for Below-Grade, Between-Slab, Planters, Roof-Gardens and similar type Waterproofing.
2. For proper membrane thickness and appropriate protection and drainage, refer to AVM Aussie Membrane 520 "Min Thickness Table"
3. Contact AVM if no drain board or protection board is specified.
4. With Sealant around pipe.
5. Aussie Membrane 520 must properly bond to pipe penetration. Use epoxy primer or Aussie Skin Fabric Tape. In addition, use clamp if needed.
6. Sealant must properly bond to pipe penetration. Use approved primer or Aussie Skin Fabric Tape.

AVM Industries, Inc.
8245 Remmet Ave, Canoga Park, CA 91304

Quality Waterproofing Products

888.414.1041 818.888.0050
www.avmindustries.com

FILE NAME: 0520-6502-C-Pipe-Thru-Wall-01-CS

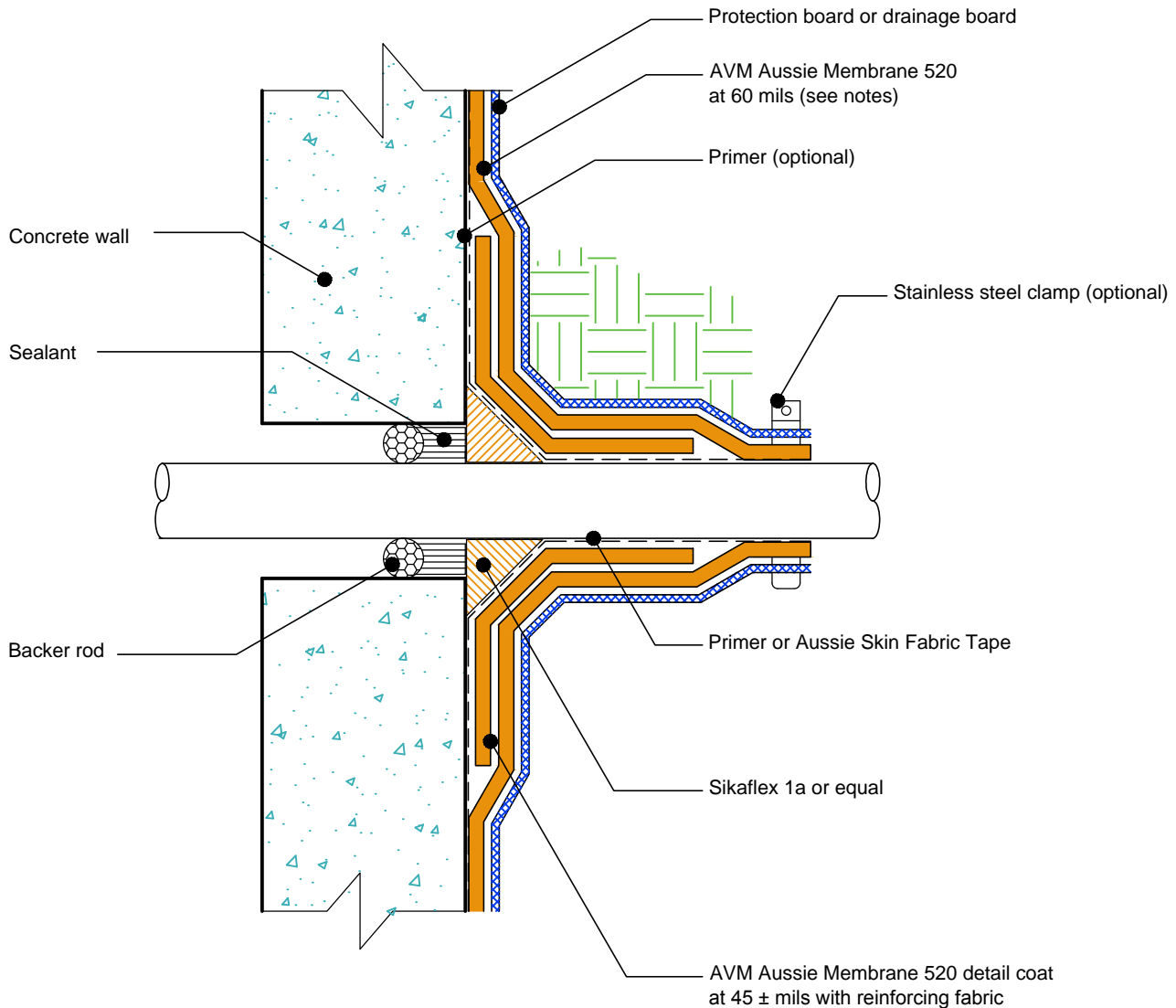
Revision Date: 5/31/2016
Protected by Copyright © AVM Industries, Inc.

DETAIL #:
AVM-0520-6504-C

AVM SYSTEM 520

AUSSIE MEMBRANE 520

Pipe Penetration Thru Wall (Option 2)
AVM AUSSIE MEMBRANE 520
Fluid Applied Waterproofing.



NOTES:

1. Aussie Membrane 520 is a Polyurethane liquid (Roller or Brush Applied) for Below-Grade, Between-Slab, Planters, Roof-Gardens and similar type Waterproofing.
2. For proper membrane thickness and appropriate protection and drainage, refer to AVM Aussie Membrane 520 "Min Thickness Table"
3. Contact AVM if no drain board or protection board is specified.
4. With Backer Rod and Sealant around pipe 33.
5. Aussie Membrane 520 must properly bond to pipe penetration. Use epoxy primer or Aussie Skin Fabric Tape. In addition, use clamp if needed.
6. Sealant must properly bond to pipe penetration. Use approved primer or Aussie Skin Fabric Tape.

AVM Industries, Inc.
8245 Remmet Ave, Canoga Park, CA 91304

Quality Waterproofing Products

888.414.1041 818.888.0050
www.avmindustries.com

FILE NAME: 0520-6504-C-Pipe-Thru-Wall-02-CS

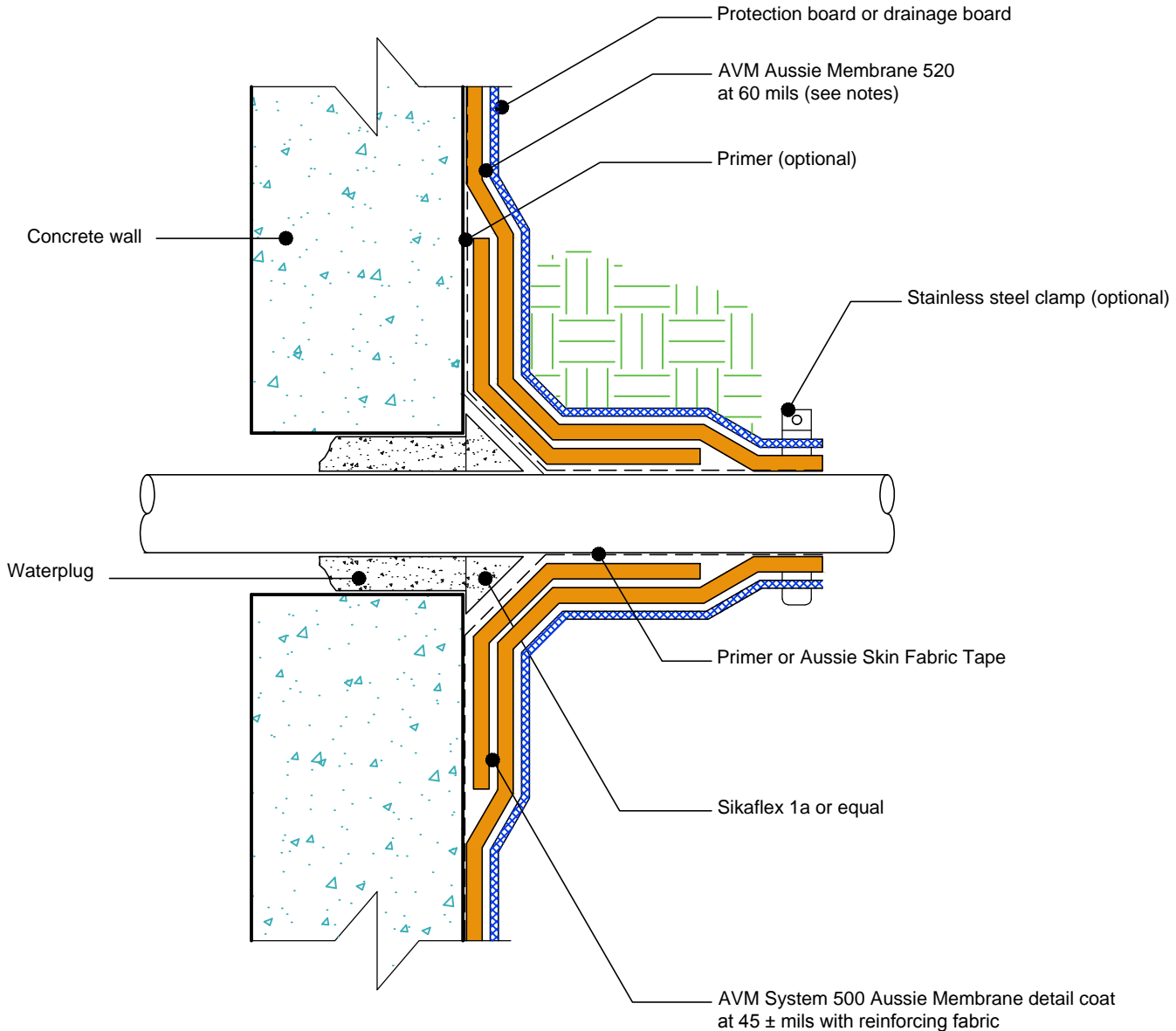
Revision Date: 5/31/2016
Protected by Copyright @ AVM Industries, Inc.

DETAIL #:
AVM-0520-6506-C

AVM SYSTEM 520

AUSSIE MEMBRANE 520

Pipe Penetration Thru Wall (Option 3)
AVM AUSSIE MEMBRANE 520
Fluid Applied Waterproofing.



NOTES:

1. Aussie Membrane 520 is a Polyurethane liquid (Roller or Brush Applied) for Below-Grade, Between-Slab, Planters, Roof-Gardens and similar type Waterproofing.
2. For proper membrane thickness and appropriate protection and drainage, refer to AVM Aussie Membrane 520 "Min Thickness Table"
3. Contact AVM if no drain board or protection board is specified.
4. With Water Plug and Sealant around pipe
5. Aussie Membrane 520 must properly bond to pipe penetration. Use epoxy primer or Aussie Skin Fabric Tape. In addition, use clamp if needed.
6. Sealant must properly bond to pipe penetration. Use approved primer or Aussie Skin Fabric Tape.

AVM Industries, Inc.
8245 Remmet Ave, Canoga Park, CA 91304

Quality Waterproofing Products

888.414.1041 818.888.0050
www.avmindustries.com

FILE NAME: 0520-6506-C-Pipe-Thru-Wall-03-CS

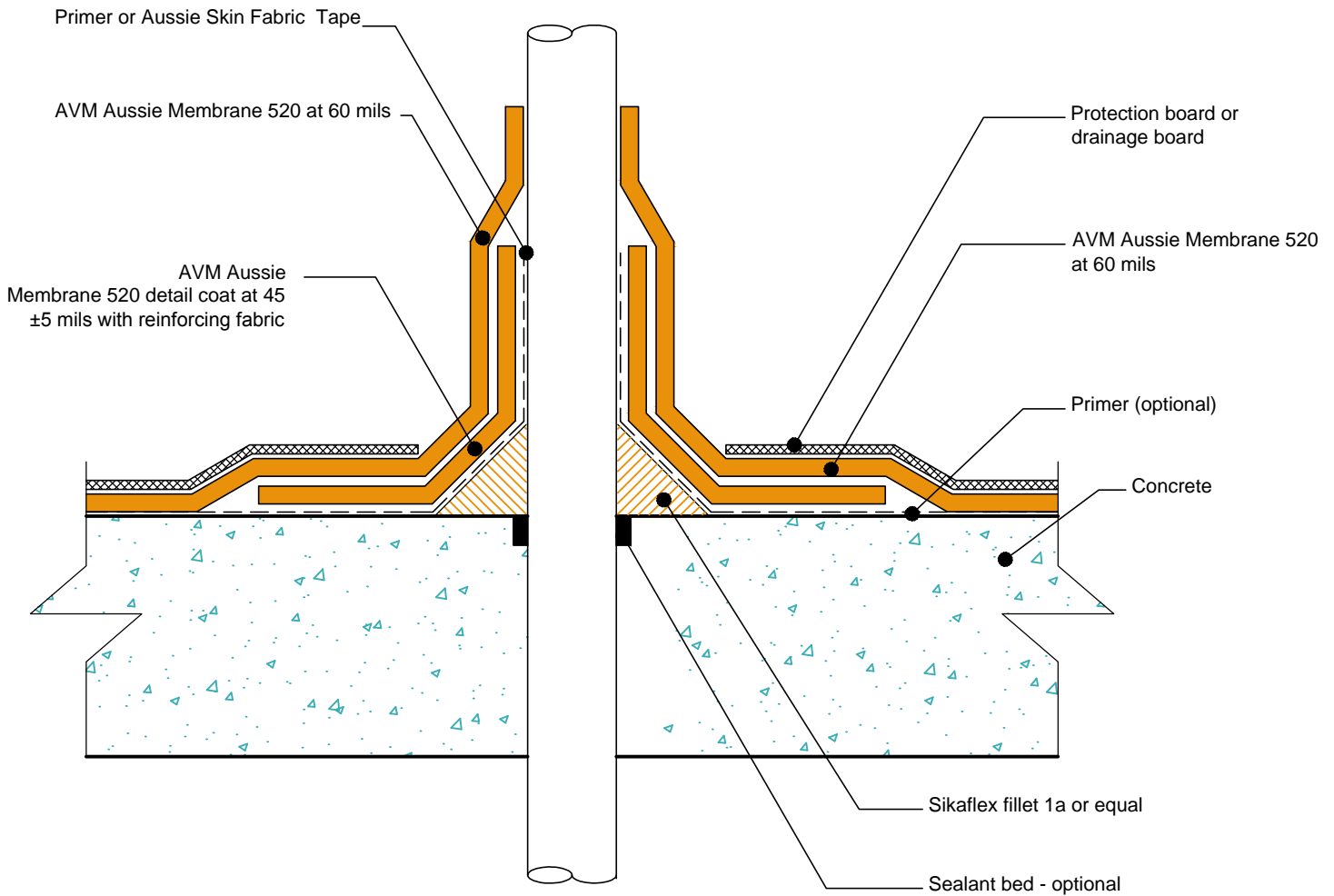
Revision Date: 5/31/2016
Protected by Copyright © AVM Industries, Inc.

DETAIL #:
AVM-0520-6702-C

AVM SYSTEM 520

AUSSIE MEMBRANE 520

Pipe Penetration Thru Slab (Option 1)
AVM AUSSIE MEMBRANE 520
Fluid Applied Waterproofing.



NOTES:

1. Aussie Membrane 520 is a Polyurethane liquid (Roller or Brush Applied) for Below-Grade, Between-Slab, Planters, Roof-Gardens and similar type Waterproofing.
2. For proper membrane thickness and appropriate protection and drainage, refer to AVM Aussie Membrane 520 "Min Thickness Table"
3. Contact AVM if no drain board or protection board is specified.
4. With Sealant around pipe.
5. Aussie Membrane 520 must properly bond to pipe penetration. Use epoxy primer or Aussie Skin Fabric Tape.
6. Sealant must properly bond to pipe penetration. Use approved primer or Aussie Skin Fabric Tape.

AVM Industries, Inc.
8245 Remmet Ave, Canoga Park, CA 91304

Quality Waterproofing Products

888.414.1041 818.888.0050
www.avmindustries.com

FILE NAME: 0520-6702-C-Pipe-Thru-Slab-01-CS

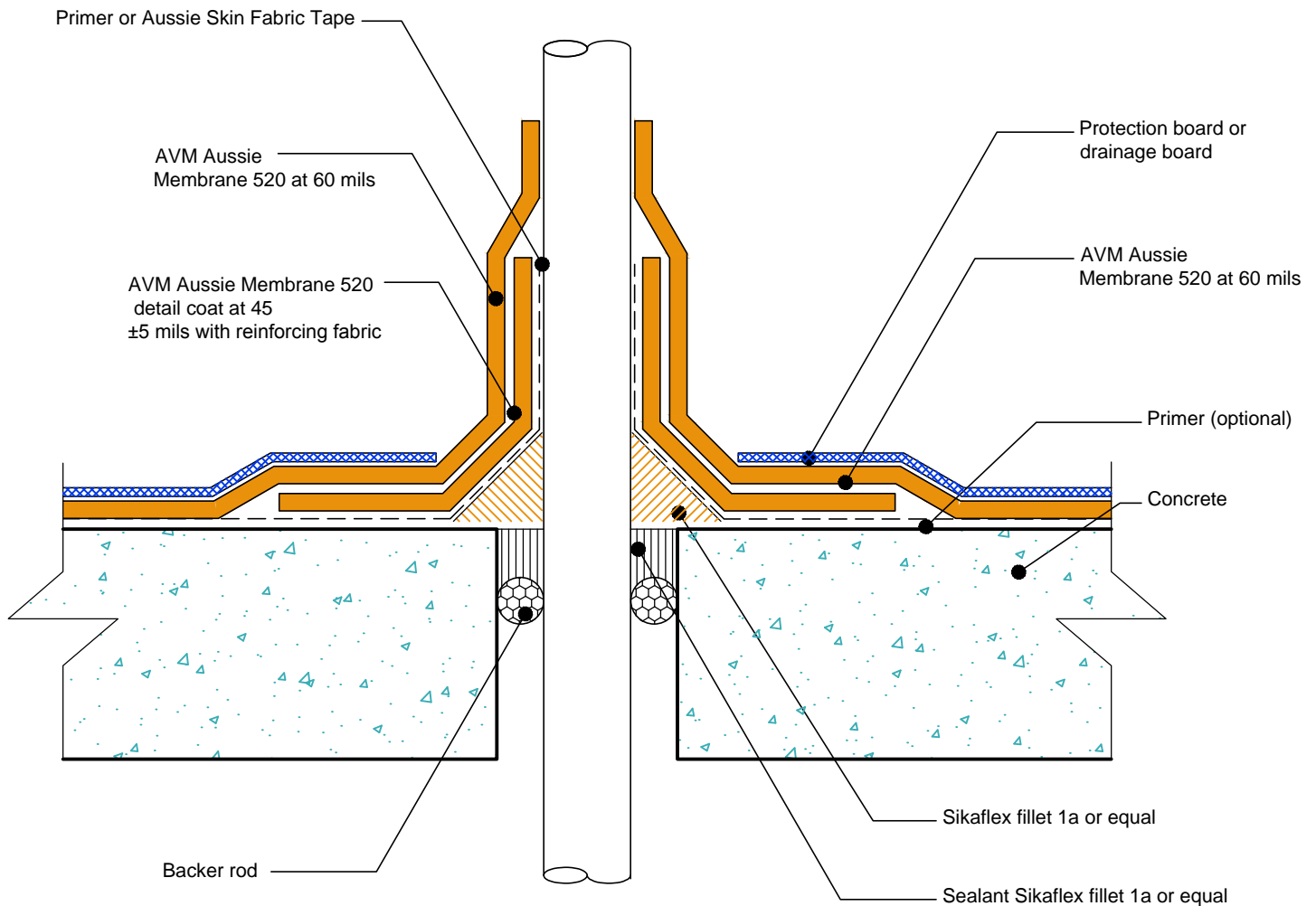
Revision Date: 5/31/2016
Protected by Copyright @ AVM Industries, Inc.

DETAIL #:
AVM-0520_6704-C

AVM SYSTEM 520

AUSSIE MEMBRANE 520

Pipe Penetration Thru Slab (Option 2)
AVM AUSSIE MEMBRANE 520
Fluid Applied Waterproofing.



NOTES:

1. Aussie Membrane 520 is a Polyurethane liquid (Roller or Brush Applied) for Below-Grade, Between-Slab, Planters, Roof-Gardens and similar type Waterproofing.
2. For proper membrane thickness and appropriate protection and drainage, refer to AVM Aussie Membrane 520 "Min Thickness Table"
3. Contact AVM if no drain board or protection board is specified.
4. With Backer Rod and Sealant around pipe.
4. Aussie Membrane 520 must properly bond to pipe penetration. Use epoxy primer or Aussie Skin Fabric Tape.
6. Sealant must properly bond to pipe penetration. Use approved primer or Aussie Skin Fabric Tape.

AVM Industries, Inc.
8245 Remmet Ave, Canoga Park, CA 91304

Quality Waterproofing Products

888.414.1041 818.888.0050
www.avmindustries.com

FILE NAME: 0520-6704-C-Pipe-Thru-Slab-02-CS

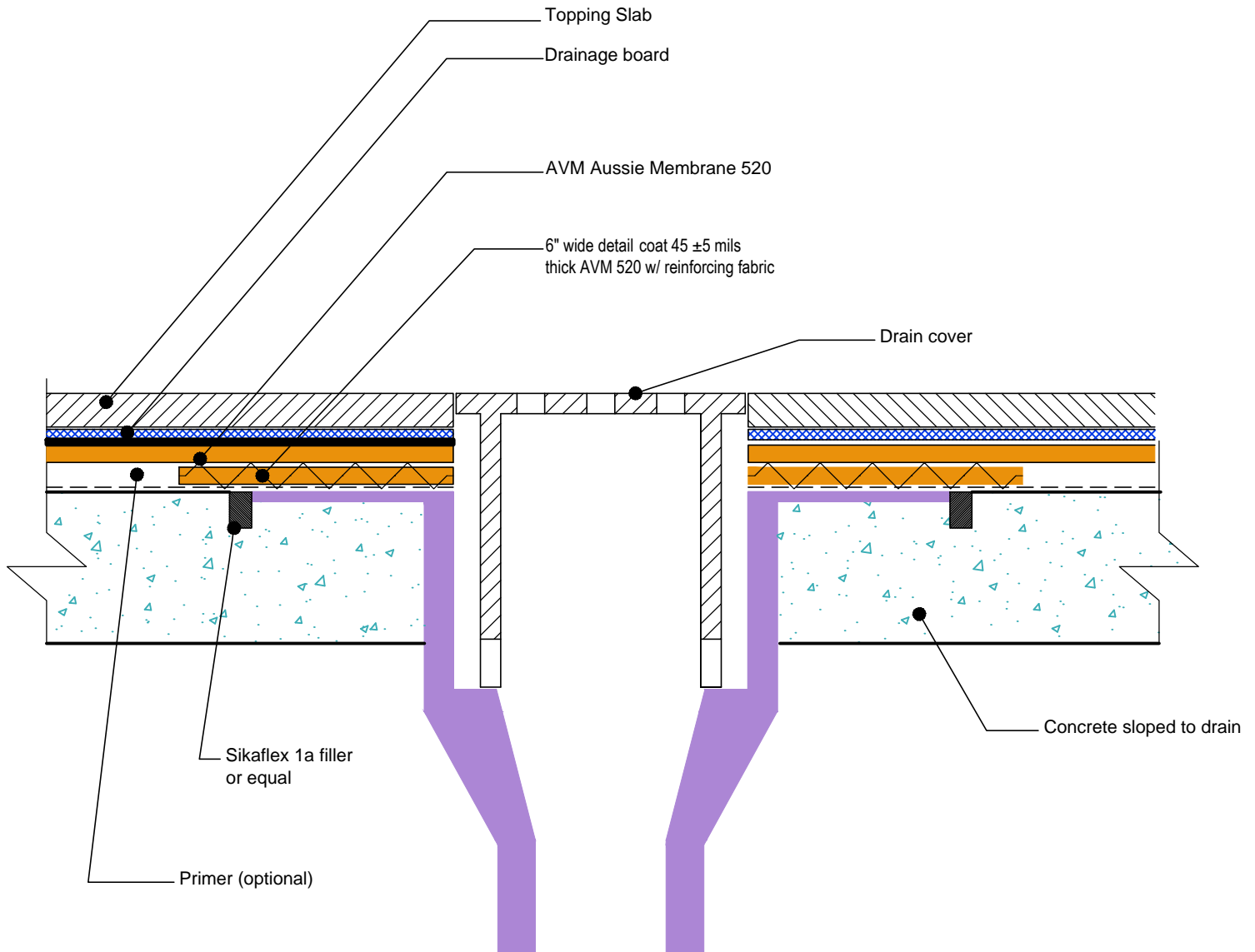
Revision Date: 5/31/2016
Protected by Copyright @ AVM Industries, Inc.

DETAIL #:
AVM-0520-7002-C

AVM SYSTEM 520

AUSSIE MEMBRANE 520

Area Drain Detail
AVM AUSSIE MEMBRANE 520
Fluid Applied Waterproofing.



NOTES:

1. Aussie Membrane 520 is a Polyurethane liquid (Roller or Brush Applied) for Below-Grade, Between-Slab, Planters, Roof-Gardens and similar type Waterproofing.
2. For proper membrane thickness and appropriate protection and drainage, refer to AVM Aussie Membrane 520 "Min Thickness Table"
3. Contact AVM if no drain board or protection board is specified.
4. For drainage and protection on topping Slabs up to 4" thick for pedestrian applications, use AVM Drain Board 6000.
5. For drainage and protection on topping slabs over 4" thick or for vehicular applications, use AVM Drain Board 9000.
6. Reinforce the Aussie Membrane 520 with AVM Mat 800 at all corners, metal transitions, penetrations, gaps, drains, etc.

AVM Industries, Inc.
8245 Remmet Ave, Canoga Park, CA 91304

Quality Waterproofing Products

888.414.1041 818.888.0050
www.avmindustries.com

FILE NAME: 0520-7002-C-Area-Drain-CS

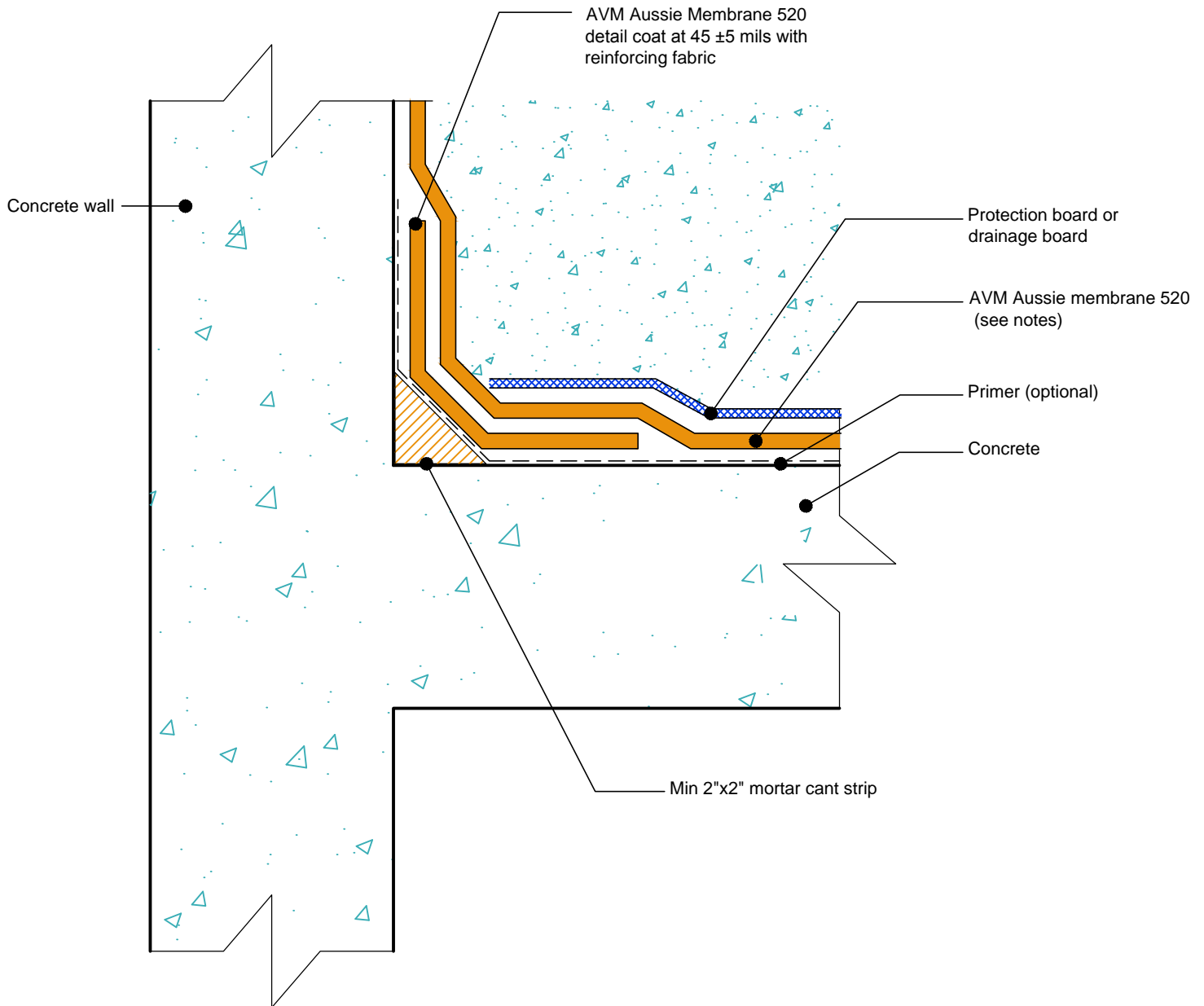
Revision Date: 5/31/2016
Protected by Copyright © AVM Industries, Inc.

DETAIL #:
AVM-0520-7502-C

AVM SYSTEM 520

AUSSIE MEMBRANE 520

Transition Horizontal to Vertical
Topping Slab or Pavers
AVM AUSSIE MEMBRANE 520
Fluid Applied Waterproofing.



NOTES:

1. Aussie Membrane 520 is a Polyurethane liquid (Roller or Brush Applied) for Below-Grade, Between-Slab, Planters, Roof-Gardens and similar type Waterproofing.
2. For proper membrane thickness and appropriate protection and drainage, refer to AVM Aussie Membrane 520 "Min Thickness Table"
3. Contact AVM if no drain board or protection board is specified.
4. Mortar cant strip and detail coat at the cold joint may be replaced with other cold joint details with prior approval from AVM.

AVM Industries, Inc.
8245 Remmet Ave, Canoga Park, CA 91304

Quality Waterproofing Products

888.414.1041 818.888.0050
www.avmindustries.com

FILE NAME: 0520-7502-C-Transition-Horizontal-To-Vertical-CS

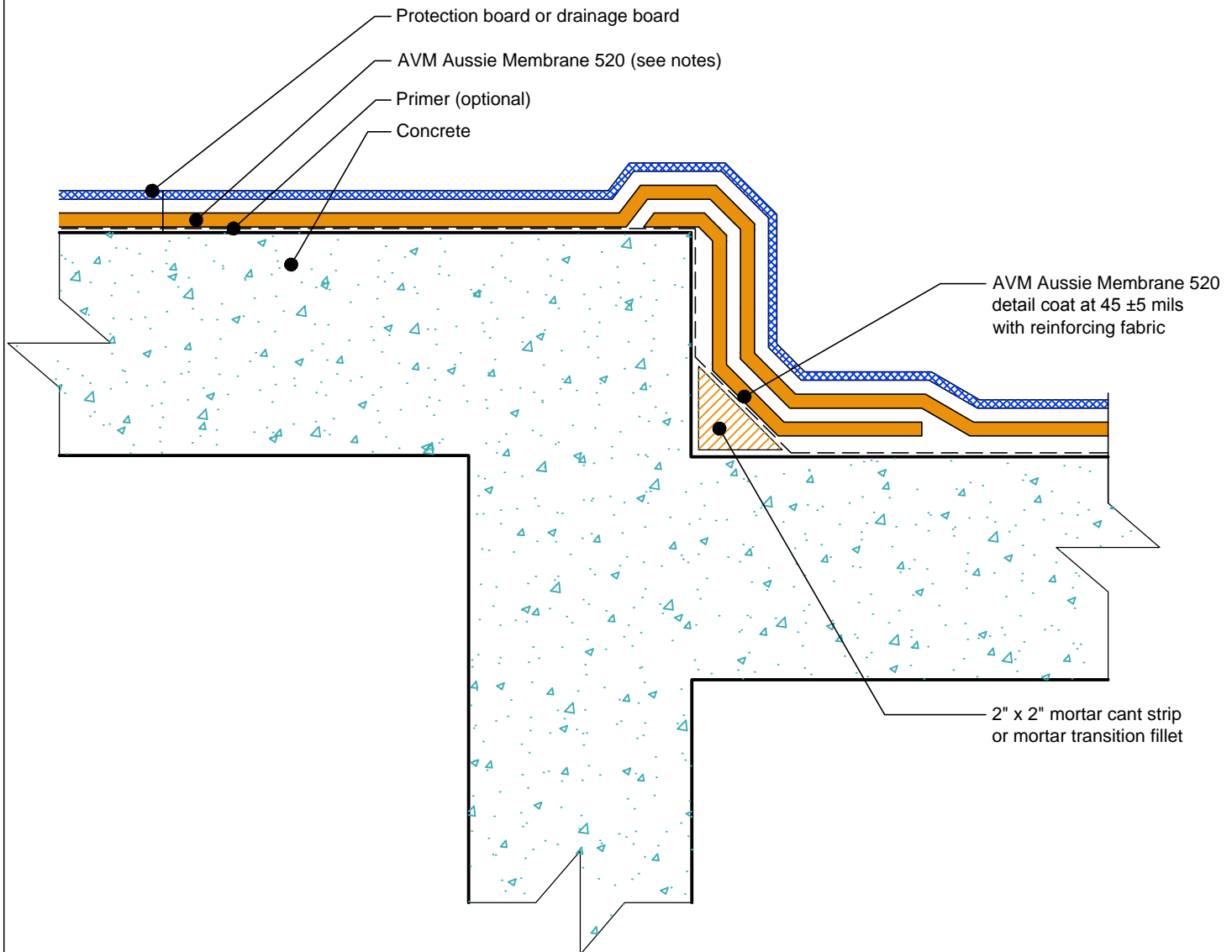
Revision Date: 5/31/2016
Protected by Copyright @ AVM Industries, Inc.

DETAIL #:
AVM-0520-7504-C

AVM SYSTEM 520

AUSSIE MEMBRANE 520

Transition At Depressed Slab
AVM AUSSIE MEMBRANE 520
Fluid Applied Waterproofing.



NOTES:

1. Aussie Membrane 520 is a Polyurethane liquid (Roller or Brush Applied) for Below-Grade, Between-Slab, Planters, Roof-Gardens and similar type Waterproofing.
2. For proper membrane thickness and appropriate protection and drainage, refer to AVM Aussie Membrane 520 "Min Thickness Table"
3. Contact AVM if no drain board or protection board is specified.
4. Mortar cant strip and detail coat at the cold joint may be replaced with other cold joint details with prior approval from AVM.

AVM Industries, Inc.
8245 Remmet Ave, Canoga Park, CA 91304

Quality Waterproofing Products

888.414.1041 818.888.0050
www.avmindustries.com

FILE NAME: 0520-7504-C-Transition-Depressed-Slab-CS

Revision Date: 5/31/2016
Protected by Copyright © AVM Industries, Inc.

DETAIL #:
AVM-0520-8002-C

AVM SYSTEM 520

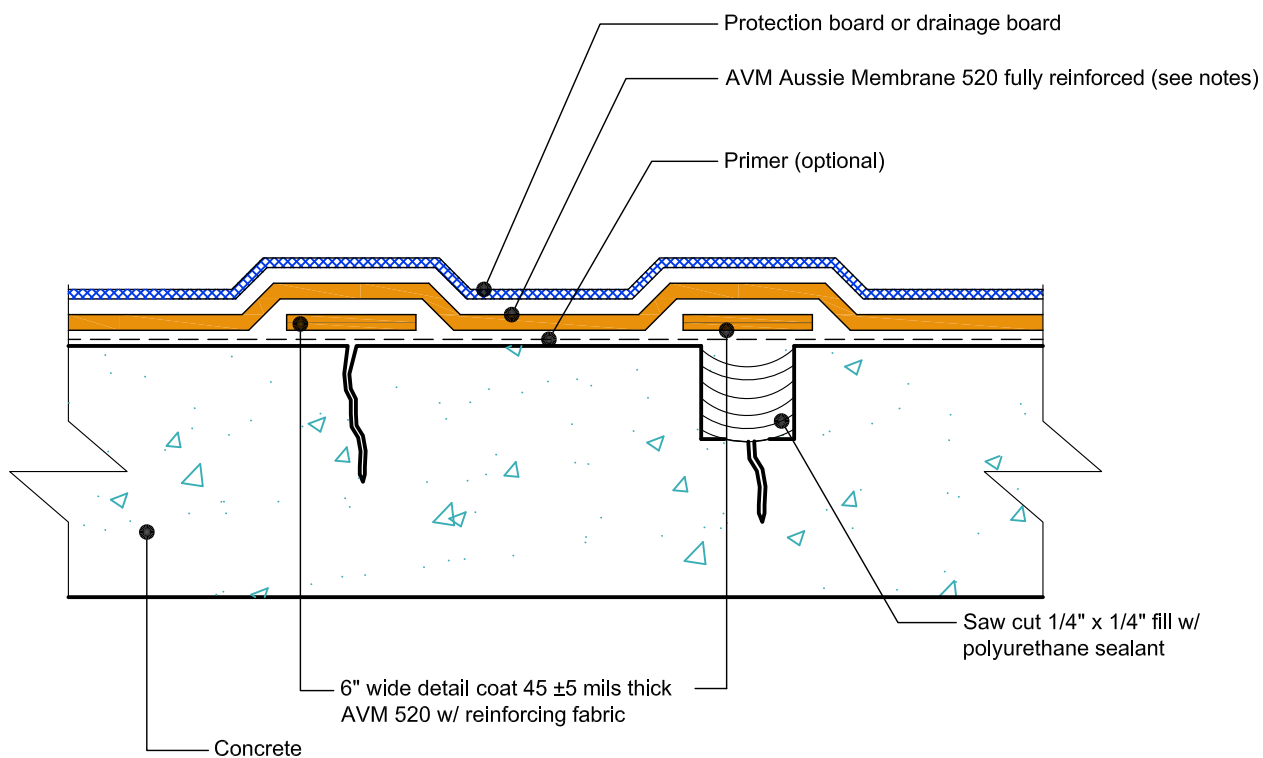
AUSSIE MEMBRANE 520

Crack Repair (Option 1)
AVM AUSSIE MEMBRANE 520
Fluid Applied Waterproofing.



Crack less than 1/16" wide

Crack greater than 1/16" wide



NOTES:

1. Aussie Membrane 520 is a Polyurethane liquid (Roller or Brush Applied) for Below-Grade, Between-Slab, Planters, Roof-Gardens and similar type Waterproofing.
2. For proper membrane thickness and appropriate protection and drainage, refer to AVM Aussie Membrane 520 "Min Thickness Table"
3. Contact AVM if no drain board or protection board is specified.

AVM Industries, Inc.
8245 Remmet Ave, Canoga Park, CA 91304

Quality Waterproofing Products

888.414.1041 818.888.0050
www.avmindustries.com

FILE NAME: 0520-8002-C-Crack-Repair-01-CS

Revision Date: 5/31/2016
Protected by Copyright @ AVM Industries, Inc.