



# AVM System 500 Aussie Membrane 500

Heavy Duty Below Grade Bituminous Waterproofing Membrane

ICC ESR-2503  
L.A. RR#: 25550

Sections 071000 / 071400 / 071416  
Fluid Applied Waterproofing

## Product Name

Aussie Membrane 500  
AVM System 500

## Manufactured by

AVM Industries, Inc.  
8245 Remmet Ave, Canoga Park, CA 91304  
888.414.1041 818.888.0050  
www.avmindustries.com

## Product Description

The AVM Aussie Membrane 500 is a Water-Based rubber/bitumen liquid membrane modified with high performance rubberized polymers giving it excellent adhesion, which dries to a tough, black seamless flexible waterproof membrane. The Aussie Membrane 500 is a single component thixotropic cold-applied bitumen paste that exhibits excellent elongation and recovery properties. The AVM Aussie Membrane 500 has excellent long-term stability (maintains its properties over very long periods of time) unlike other below grade systems (including polyurethane based systems) that Crack and become brittle as they age.

## Where to Use

**Retaining Walls:** Waterproof below-grade, concrete, block walls, basements, etc.

**Planters:** Waterproof planters and other landscaping features.

**In-between slab waterproofing:** To provide a sandwich membrane in-between two concrete slabs or over wood decks that will receive a topping slab. Also used as an under-tile membrane when a mud-bed or thick-set type assembly is required.

## Warranty

AVM Industries will warranty the installed membrane for a period of five (5) years. Ten (10) year warranties are also available. For complete warranty details, contact AVM Industries or consult with your applicator.



## Delivery, Storage, and Handling

- Delivery of all the AVM System 500 materials to the job site must be in their original sealed containers, with manufacturer's name and label intact.
- Handle and store containers in accordance with printed instructions.
- Store at temperatures between 50°F and 90°F. Do not store materials in direct sunlight or where they may be damaged by water or rain.
- Failure to comply with the recommended storage conditions may result in premature deterioration of the product. For specific storage advice, please contact AVM Industries and/or its representatives.
- Keep all materials out of the reach of children.
- If irritation occurs during use, liberally flush affected areas with water. If irritation continues, see a physician immediately.

## Project Conditions

- All surfaces to which the Aussie Membrane 500 is applied to must be sound and stable, with an even finish and free from dust, loose debris, grease, curing agents, etc.
- The Aussie Membrane 500 may be applied to damp but not waterlogged surfaces (Green Concrete)
- Do not apply materials at temperatures below 40°F and falling or if precipitation is imminent. Do not apply materials in direct sunlight at temperatures above 100°F or rising.
- Warn personnel against hazards of materials to skin and eyes. Note other hazardous conditions on the job that might require special protective gear and or any other special protective or safety procedures.
- Protect adjacent surfaces which could be damaged during the application procedure.
- This system must not be used to cover Expansion Joints.

## System Application

Read the AVM System 500 Installation Instructions Prior to Installation. Application instructions vary based on type of application and the type of surfaces it's being applied to. For specific application procedures, refer to, or download the appropriate installation instructions. (For Retaining Walls, refer to the "Retaining Walls Installation Instructions". For Planters, refer to the "Planters Installation Instructions", etc.)

Basic installation procedures are also provided in the "Spec Data Sheet" of each type of installation. For a complete/comprehensive set of instructions, however, please refer to the "Installation Instructions" documents.

## Quality Control

- Visually inspect all coated surfaces to ensure a full and proper coating application, especially at corners, drainage footings and other hard-to-reach areas.
- All unsatisfactory areas shall be repaired prior to final acceptance.

## Protection of Installed Work

- The completed section shall be protected for the first 24 hours after application or until the surface is sufficiently cured. (The amount of drying time may vary depending on temperature and humidity conditions)
- Always protect the waterproofing from possible damage. Use AVM Foam Board, AVM Drainage Boards or AVM Approved Protective Panels. Refer to the "spec Data Sheets" or to the "Aussie Membrane 500 Min Thickness Table" for protection details.

## Availability and Cost

Contact AVM Industries or your approved applicator for pricing and availability.

## Technical Services

Technical services are available by contacting our offices at: **888.414.1041** or **818.888.0050** or visit **www.avmindustries.com**

## System Specifications

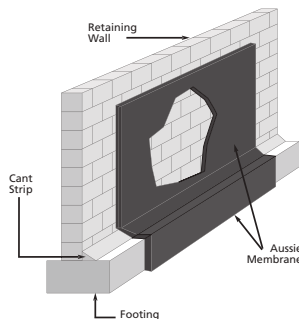
See next page.

The following coverages are based on controlled tests. Actual coverages may vary.

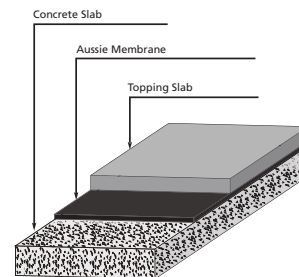
Technical Information		
Color	Dark brown. After drying: black	
Specific Gravity	1.189 gr/cm²	
Coverage: (Varies depending on substrate)	24-25 sq.ft./Gal. @ 60 Dry Mills	
Flash Point	Non-flammable	
Service Temperature	15°F-177°F (-10°C to +80°C)	
Application Temperature	42°F-132°F (+5°C to 55°C)	
Solid Content	64%	
Tensile Strength	>15.4 Lbs (>7 kg)	ASTM D 412
Elongation at break	>1000%	ASTM D 412
Resistance to water pressure 1 tm 24 hr	Passed	ASTM D751
Water vapor transmission	4.0 gr/m² 24 hr	ASTM D 96
Recovery	85%	IS 1536
Creep At 177°F (80°C)	No Creep	DIN 52123
Resistance to Standing Water	Passed	ASTM D 2939
Bacterial Attack in soil 30 days @ 105°F (40°C)	Passed	ASTM D 2939
Crack bridging	>3/16" (>5mm)	IS 1731
Certifications	ISO 9002, Green Label, I.Q. Net (International Certification Network)	

Item / Component	Packaging	Approx Shipping Weights	VOC
AVM Primer 500	2.0/5.0 gal. pails	2.0/5.0 gal. 15/39 lbs.	15 Grams/Liter
AVM Aussie Membrane 500	5.0 gal. pails	5.0 gal. 52.5 lbs	19 Grams/Liter

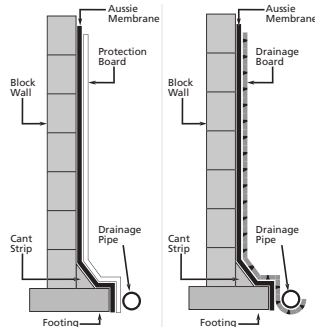
Retaining Wall with Aussie Membrane



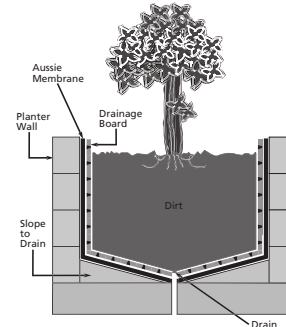
In-Between Slab Waterproofing



Block Walls with Aussie Membrane



Planter with Aussie Membrane



For a complete list of details in CAD or PDF, please visit our website at [www.avmindustries.com](http://www.avmindustries.com).

AVM Industries, Inc.  
8245 Remmet Ave, Canoga Park, CA 91304  
888.414.1041 818.888.0050

Quality Waterproofing Products

[www.avmindustries.com](http://www.avmindustries.com)





## AVM System 500 Aussie Membrane 500

Heavy Duty Below Grade Bituminous Waterproofing Membrane

ICC ESR-2503  
L.A. RR#: 25550

Sections 071000 / 071400 / 071416  
Fluid Applied Waterproofing

### Product Name

Aussie Membrane 500  
AVM System 500

### Manufactured by

AVM Industries, Inc.  
8245 Remmet Ave, Canoga Park, CA 91304  
888.414.1041 818.888.0050  
www.avmindustries.com

### Product Description

The AVM Aussie Membrane 500 is a Water-Based rubber/bitumen liquid membrane modified with high performance rubberized polymers giving it excellent adhesion, which dries to a tough, black seamless flexible waterproof membrane. The Aussie Membrane 500 is a single component thixotropic cold-applied bitumen paste that exhibits excellent elongation and recovery properties. The AVM Aussie Membrane 500 has excellent long-term stability (maintains its properties over very long periods of time) un-like other below grade systems (including polyurethane based systems) that Crack and become brittle as they age.

### Where to Use

**Planters:** For waterproofing planters made of block or concrete.

**Important note:** For "Green Roofs" (Roof Gardens) please refer to the "Green Roofs" Spec Data Sheet.

### Warranty

AVM Industries will warranty the installed membrane for a period of five (5) years. Ten (10) year warranties are also available. For complete warranty details, contact AVM Industries or consult with your applicator.

### Delivery, Storage, and Handling

- Delivery of all the AVM System 500 materials to the job site must be in their original sealed containers, with manufacturer's name and label intact.
- Handle and store containers in accordance with printed instructions.
- Store at temperatures between 50°F and 90°F. Do not store materials in direct sunlight or where they may be damaged by water or rain.
- Failure to comply with the recommended storage conditions may result in premature deterioration of the product. For specific storage advice, please contact AVM Industries and/or its representatives.
- Keep all materials out of the reach of children.
- If irritation occurs during use, liberally flush affected areas with water. If irritation continues, see a physician immediately.

### Project Conditions

- All surfaces to which the Aussie Membrane 500 is applied to must be sound and stable, with an even finish and free from dust, loose debris, grease, curing agents, etc.



- The Aussie Membrane 500 may be applied to damp but not waterlogged surfaces (Green Concrete)
- Do not apply materials at temperatures below 40°F and falling or if precipitation is imminent. Do not apply materials in direct sunlight at temperatures above 100°F or rising.
- Warn personnel against hazards of materials to skin and eyes. Note other hazardous conditions on the job that might require special protective gear and or any other special protective or safety procedures.
- Protect adjacent surfaces which could be damaged during the application procedure.
- This system must not be used to cover Expansion Joints.

### System Application

Read the AVM System 500 Installation Instructions Prior to Installation. Application instructions vary based on application surfaces. Following are common (Generic) application procedures only. For specific application procedures, download the appropriate installation instructions.

### Preparation

- Make sure surface is even without holes, gaps, etc. Make sure substrate has no cracks larger than 1/16" wide. Pay special attention to shrinkage cracks between the blocks and the mortar at the block's joints.
- If necessary, apply a thin slurry coat using AVM Crete 6200.
- Apply a 4"x4" mortar cant at 45° at the cold joints. (Where the block meets the footings)
- Priming is highly recommended! Especially if surfaces are old, dusty or very dense (such as solid concrete) Always use AVM Primer 500 when installing over horizontal surfaces. Apply Primer using roller, brush or sprayer.

### Membrane Installation

**Roller/Brush:** Apply a liberal coat of the Aussie Membrane 500 to all surfaces. (Roll up and down) Allow to cure until dry to the touch. Apply a second coat of the Aussie Membrane 500 going side to side. Allow to dry to the touch. Check for pinholes and proper thickness using a mil gauge. Make sure it's a minimum 60 mils at all places when completely dry and 90 mils if still wet. Full cure is typically achieved after 24 hours. Drying times may vary based on temperature, humidity and other factors. Applying a third coat is highly recommended.

**Spray:** Mix contents in bucket with drill and paddle for 30 - 60 seconds. Product will thin out significantly. (The thinning does not affect performance) Do NOT add water! Use an airless sprayer to apply. Apply product until saturated but stop before dripping or sagging occurs. Once dry to the touch, apply a second coat spraying in the other direction. Check for thickness. (60 mils dry / 90 mils wet)

### Important Notes:

- 90 mils dry is highly recommended.
- Although it is possible to spray 60 dry mils in one coat, doing so in two coats reduces the chances of leaving spots and pinholes uncovered or with too little product.

### Quality Control

- Visually inspect all coated surfaces to ensure a full and proper coating application, especially at corners, drainage footings and other hard-to-reach areas.
- All unsatisfactory areas shall be repaired prior to final acceptance.
- Perform a 24 hour water test whenever possible.

### Protection of Installed Work

- The completed section shall be protected for the first 24 hours after application or until the surface is sufficiently cured. (The amount of drying time may vary depending on temperature and humidity conditions)
- Always protect the waterproofing from possible damage. First install a root barrier (such as ¼" Apoc Protective Panels) or other approved root barrier. Then, on horizontal surfaces, install AVM Drain Board 9000. On vertical surfaces, install AVM Drain Board 6000. Refer to Technical Details, "Min Thickness Table" and "Installation Instructions for more info.

### Availability and Cost

Contact AVM Industries or your approved applicator for pricing and availability.

### Technical Services

Technical services are available by contacting our offices at: 888.414.1041 or 818.888.0050 or visit [www.avmindustries.com](http://www.avmindustries.com)

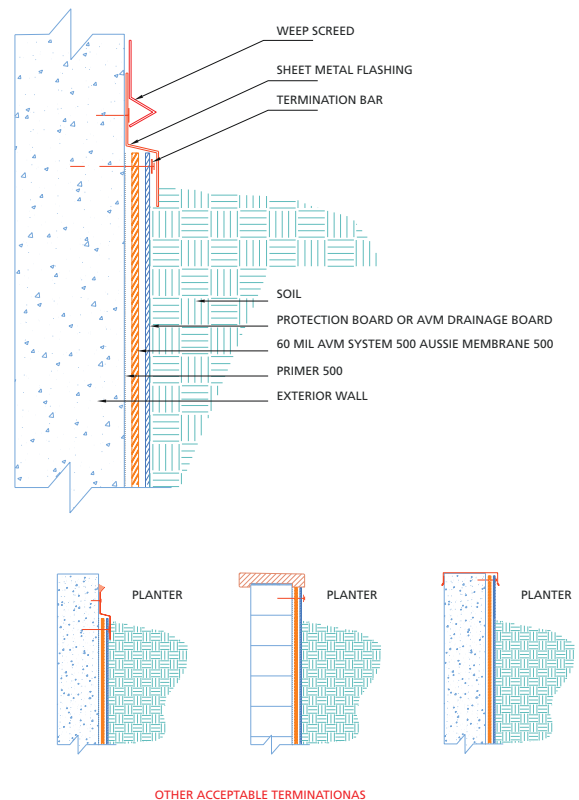
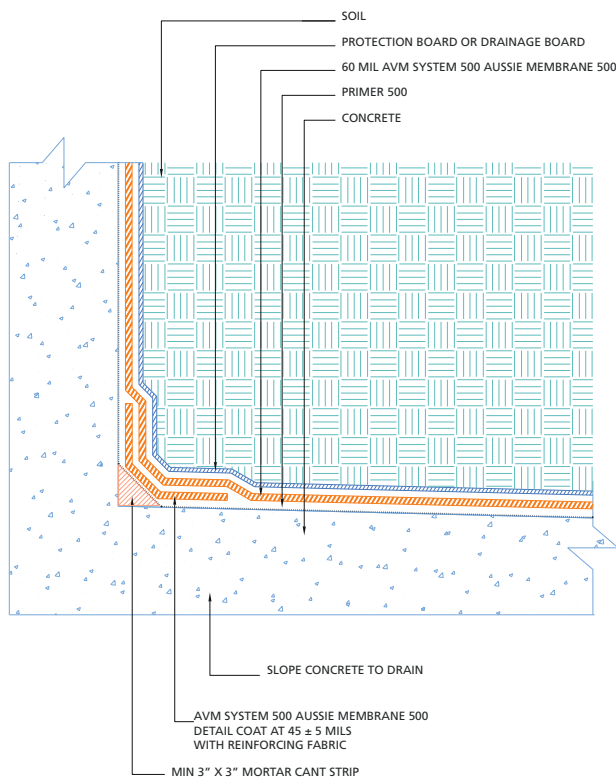
### System Specifications

See next page.

The following coverages are based on controlled tests. Actual coverages may vary.

Technical Information		
Color	Dark brown. After drying: black	
Specific Gravity	1.189 gr/cm <sup>2</sup>	
Coverage: (Varies depending on substrate)	24-25 sq.ft./Gal. @ 60 Dry Mills	
Flash Point	Non-flammable	
Service Temperature	15°F-177°F (-10°C to +80°C)	
Application Temperature	42°F-132°F (+5°C to 55°C)	
Solid Content	64%	
Tensile Strength	>15.4 Lbs (>7 kg)	ASTM D 412
Elongation at break	>1000%	ASTM D 412
Resistance to water pressure 1 tm 24 hr	Passed	ASTM D751
Water vapor transmission	4.0 gr/m <sup>2</sup> 24 hr	ASTM D 96
Recovery	85%	IS 1536
Creep At 177°F (80°C)	No Creep	DIN 52123
Resistance to Standing Water	Passed	ASTM D 2939
Bacterial Attack in soil 30 days @ 105°F (40°C)	Passed	ASTM D 2939
Crack bridging	>3/16" (>5mm)	IS 1731
Certifications	ISO 9002, Green Label, I.Q. Net (International Certification Network)	

Item / Component	Packaging	Approx Shipping Weights	VOC
AVM Primer 500	2.0/5.0 gal. pails	2.0/5.0 gal. 15/39 lbs.	15 Grams/Liter
AVM Aussie Membrane 500	5.0 gal. pails	5.0 gal. 52.5 lbs	19 Grams/Liter



For a complete list of details in CAD or PDF, please visit our website at [www.avmindustries.com](http://www.avmindustries.com).

AVM Industries, Inc.  
8245 Remmet Ave, Canoga Park, CA 91304  
888.414.1041 818.888.0050

Quality Waterproofing Products



[www.avmindustries.com](http://www.avmindustries.com)





## AVM System 500 Aussie Membrane 500

Heavy Duty Below Grade Bituminous Waterproofing Membrane

ICC ESR-2503  
L.A. RR#: 25550

Sections 071000 / 071400 / 071416  
Fluid Applied Waterproofing

### Product Name

Aussie Membrane 500  
AVM System 500

### Manufactured by

AVM Industries, Inc.  
8245 Remmet Ave, Canoga Park, CA 91304  
888.414.1041 818.888.0050  
www.avmindustries.com

### Product Description

The AVM Aussie Membrane 500 is a Water-Based rubber/bitumen liquid membrane modified with high performance rubberized polymers giving it excellent adhesion, which dries to a tough, black seamless flexible waterproof membrane. The Aussie Membrane 500 is a single component thixotropic cold-applied bitumen paste that exhibits excellent elongation and recovery properties. The AVM Aussie Membrane 500 has excellent long-term stability (maintains its properties over very long periods of time) un-like other below grade systems (including polyurethane based systems) that Crack and become brittle as they age.

### Where to Use

Retaining Walls: Waterproof below-grade, concrete, block walls, basements, etc.

### Warranty

AVM Industries will warranty the installed membrane for a period of five (5) years. Ten (10) year warranties are also available. For complete warranty details, contact AVM Industries or consult with your applicator.

### Delivery, Storage, and Handling

- Delivery of all the AVM System 500 materials to the job site must be in their original sealed containers, with manufacturer's name and label intact.
- Handle and store containers in accordance with printed instructions.
- Store at temperatures between 50°F and 90°F. Do not store materials in direct sunlight or where they may be damaged by water or rain.
- Failure to comply with the recommended storage conditions may result in premature deterioration of the product. For specific storage advice, please contact AVM Industries and/or its representatives.
- Keep all materials out of the reach of children.
- If irritation occurs during use, liberally flush affected areas with water. If irritation continues, see a physician immediately.

### Project Conditions

- All surfaces to which the Aussie Membrane 500 is applied to must be sound and stable, with an even finish and free from dust, loose debris, grease, curing agents, etc. .
- The Aussie Membrane 500 may be applied to damp but not waterlogged surfaces (Green Concrete)



- Do not apply materials at temperatures below 40°F and falling or if precipitation is imminent. Do not apply materials in direct sunlight at temperatures above 100°F or rising.
- Warn personnel against hazards of materials to skin and eyes. Note other hazardous conditions on the job that might require special protective gear and or any other special protective or safety procedures.
- Protect adjacent surfaces which could be damaged during the application procedure.
- This system must not be used to cover Expansion Joints.

### System Application

Read the AVM System 500 Installation Instructions Prior to Installation. Application instructions vary based on application surfaces. Following are common (Generic) application procedures only. For specific application procedures, download the appropriate installation instructions.

### Preparation

- Make sure surface is even without holes, gaps, etc. Make sure substrate has no cracks larger than 1/16" wide. Pay special attention to shrinkage cracks between the blocks and the mortar at the block's joints.
- If necessary, apply a thin slurry coat using AVM Crete 6200.
- Apply a 4"x4" mortar cant at 45° at the cold joints. (Where the block meets the footings)
- Priming is highly recommended! Especially if surfaces are old, dusty or very dense (such as solid concrete) Always use AVM Primer 500 when installing over horizontal surfaces. Apply Primer using roller, brush or sprayer.

### Membrane Installation

**Roller/Brush:** Apply a liberal coat of the Aussie Membrane 500 to all surfaces. (Roll up and down) Allow to cure until dry to the touch. Apply a second coat of the Aussie Membrane 500 going side to side. Allow to dry to the touch. Check for pinholes and proper thickness using a mil gauge. Make sure it's a minimum 60 mils at all places when completely dry and 90 mils if still wet. Full cure is typically achieved after 24 hours. Drying times may vary based on temperature, humidity and other factors. Applying a third coat is highly recommended.

**Spray:** Mix contents in bucket with drill and paddle for 30 - 60 seconds. Product will thin out significantly. (The thinning does not affect performance) Do NOT add water! Use an airless sprayer to apply. Apply product until saturated but stop before dripping or sagging occurs. Once dry to the touch, apply a second coat spraying in the other direction. Check for thickness. (60 mils dry / 90 mils wet)

### Important Notes:

- 90 mils dry on vertical block walls is highly recommended.
- Although it is possible to spray 60 dry mils in one coat, doing so in two coats reduces the chances of leaving spots and pinholes uncovered or with too little product.

### Quality Control

- Visually inspect all coated surfaces to ensure a full and proper coating application, especially at corners, drainage footings and other hard-to-reach areas.
- All unsatisfactory areas shall be repaired prior to final acceptance.

### Protection of Installed Work

- The completed section shall be protected for the first 24 hours after application or until the surface is sufficiently cured. (The amount of drying time may vary depending on temperature and humidity conditions)
- Always protect the waterproofing from possible damage. Install the AVM Drain Board 6000 and appropriate drainage system. Refer to Technical Details, "Min Thickness Table" and "Installation Instructions for more info.

### Availability and Cost

Contact AVM Industries or your approved applicator for pricing and availability.

### Technical Services

Technical services are available by contacting our offices at: **888.414.1041** or **818.888.0050** or visit **www.avmindustries.com**

### System Specifications

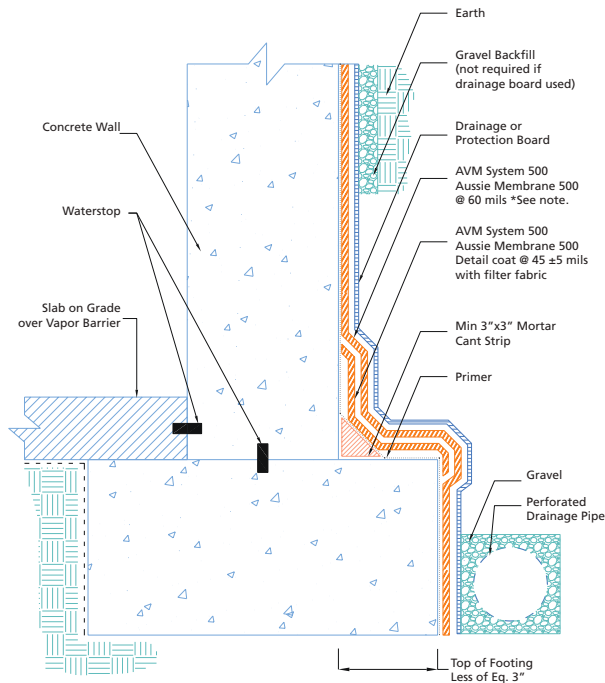
See next page.

The following coverages are based on controlled tests. Actual coverages may vary.

Technical Information		
Color	Dark brown. After drying: black	
Specific Gravity	1.189 gr/cm <sup>2</sup>	
Coverage: (Varies depending on substrate)	24-25 sq.ft./Gal. @ 60 Dry Mills	
Flash Point	Non-flammable	
Service Temperature	15°F-177°F (-10°C to +80°C)	
Application Temperature	42°F-132°F (+5°C to 55°C)	
Solid Content	64%	
Tensile Strength	>15.4 Lbs (>7 kg)	ASTM D 412
Elongation at break	>1000%	ASTM D 412
Resistance to water pressure 1 tm 24 hr	Passed	ASTM D751
Water vapor transmission	4.0 gr/m <sup>2</sup> 24 hr	ASTM D 96
Recovery	85%	IS 1536
Creep At 177°F (80°C)	No Creep	DIN 52123
Resistance to Standing Water	Passed	ASTM D 2939
Bacterial Attack in soil 30 days @ 105°F (40°C)	Passed	ASTM D 2939
Crack bridging	>3/16" (>5mm)	IS 1731
Certifications	ISO 9002, Green Label, I.Q. Net (International Certification Network)	

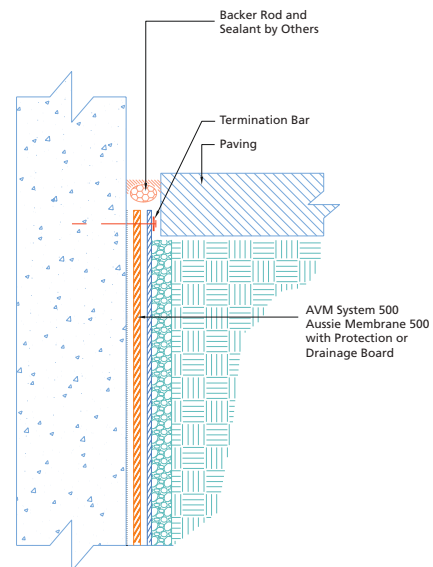
Item / Component	Packaging	Approx Shipping Weights	VOC
AVM Primer 500	2.0/5.0 gal. pails	2.0/5.0 gal. 15/39 lbs.	15 Grams/Liter
AVM Aussie Membrane 500	5.0 gal. pails	5.0 gal. 52.5 lbs	19 Grams/Liter

## Slab on Grade at Top of Footing



Note: For applications deeper than 6 feet, see Aussie Membrane 500 Thickness Chart.

## Termination at Grade



For a complete list of details in CAD or PDF, please visit our website at [www.avmindustries.com](http://www.avmindustries.com).

AVM Industries, Inc.  
8245 Remmet Ave, Canoga Park, CA 91304  
888.414.1041 818.888.0050

Quality Waterproofing Products



[www.avmindustries.com](http://www.avmindustries.com)



# AVM System 500 Aussie Membrane 500

Heavy Duty Below Grade Bituminous Waterproofing Membrane

ICC ESR-2503  
L.A. RR#: 25550

Sections 071000 / 071400 / 071416  
Fluid Applied Waterproofing

## Product Name

Aussie Membrane 500  
AVM System 500

## Manufactured by

AVM Industries, Inc.  
8245 Remmet Ave, Canoga Park, CA 91304  
888.414.1041 818.888.0050  
www.avmindustries.com

## Product Description

The AVM Aussie Membrane 500 is a Water-Based rubber/bitumen liquid membrane modified with high performance rubberized polymers giving it excellent adhesion, which dries to a tough, black seamless flexible waterproof membrane. The Aussie Membrane 500 is a single component thixotropic cold-applied bitumen paste that exhibits excellent elongation and recovery properties. The AVM Aussie Membrane 500 has excellent long-term stability (maintains its properties over very long periods of time) unlike other below grade systems (including polyurethane based systems) that Crack and become brittle as they age.

## Where to Use

### Between Slabs / Topping Slabs / Hard Rock:

For waterproofing between two slabs, under topping slabs, under hard rock and other sandwiched applications.

**Important notes:** May be applied over concrete or plywood substrates. (See details)

## Warranty

AVM Industries will warranty the installed membrane for a period of five (5) years. Ten (10) year warranties are also available. For complete warranty details, contact AVM Industries or consult with your applicator.

## Delivery, Storage, and Handling

- Delivery of all the AVM System 500 materials to the job site must be in their original sealed containers, with manufacturer's name and label intact.
- Handle and store containers in accordance with printed instructions.
- Store at temperatures between 50°F and 90°F. Do not store materials in direct sunlight or where they may be damaged by water or rain.
- Failure to comply with the recommended storage conditions may result in premature deterioration of the product. For specific storage advice, please contact AVM Industries and/or its representatives.
- Keep all materials out of the reach of children.
- If irritation occurs during use, liberally flush affected areas with water. If irritation continues, see a physician immediately.

## Project Conditions

- All surfaces to which the Aussie Membrane 500 is applied to must be sound and stable,



- with an even finish and free from dust, loose debris, grease, curing agents, etc. .
- The Aussie Membrane 500 may be applied to damp but not waterlogged surfaces (Green Concrete)
- Do not apply materials at temperatures below 40°F and falling or if precipitation is imminent. Do not apply materials in direct sunlight at temperatures above 100°F or rising.
- Warn personnel against hazards of materials to skin and eyes. Note other hazardous conditions on the job that might require special protective gear and or any other special protective or safety procedures.
- Protect adjacent surfaces which could be damaged during the application procedure.
- This system must not be used to cover Expansion Joints.

## System Application

Read the AVM System 500 Installation Instructions Prior to Installation. Application instructions vary based on application surfaces. Following are common (Generic) application instructions for applications over concrete only. For detailed installation instructions, download the appropriate installation instructions.

## Preparation

- Make sure concrete surfaces are even without holes, gaps, etc. Make sure substrate has no cracks larger than 1/16" wide. (If applying over plywood substrates, refer to the "Between Slab Installation Instructions" and "Details" for more information)
- If necessary, apply a thin slurry coat using AVM Crete 6200.
- Apply a 1x1" mortar cant at 45° at horizontal-to-vertical transitions. Then apply a detail coat. (See details)
- Primer: Apply AVM Primer 500 using a roller, brush or sprayer to all surfaces and allow to dry to the touch before installing the Aussie Membrane 500.

## Membrane Installation

**Roller/Brush:** Apply liberal coats of the Aussie Membrane 500 to all surfaces until the desired thickness is achieved. (see AVM Aussie Membrane 500 500 Min Thickness Table for more info) Allow to cure between coats. Check for pinholes, bubbles and proper thickness using a mil gauge. Fix any imperfections as needed. Full cure is



typically achieved after 24-48 hours after the final coat was installed. Drying times may vary based on temperature, humidity and other factors.

**Spray:** Mix contents in bucket with drill and paddle for 30 - 60 seconds. Product will thin out significantly. (The thinning does not affect performance) Do NOT add water! Use an airless sprayer to apply. Apply product until saturated but stop before dripping or sagging occurs. Once dry to the touch, apply a second coat spraying in the other direction. Continue to apply coats until the desired thickness is achieved.

## Important Notes:

It's better to apply multiple thin coats Vs. one or two thick coats.

Applying coats too thick could cause material to crust over and slow down curing times. It could also lead to bubbling and delaminations.

## Quality Control

- Visually inspect all coated surfaces to ensure a full and proper coating application, especially at corners, drainage footings and other hard-to-reach areas.
- All unsatisfactory areas shall be repaired prior to final acceptance.

## Protection of Installed Work

- The completed section shall be protected for the first 24 hours after application or until the surface is sufficiently cured. (The amount of drying time may vary depending on temperature and humidity conditions)
- Always protect the waterproofing from possible damage. Install optional "protective Panels" and appropriate AVM Drainage Boards. Refer to Technical Details, "Min Thickness Table" and "Installation Instructions for more info.

## Availability and Cost

Contact AVM Industries or your approved applicator for pricing and availability.

## Technical Services

Technical services are available by contacting our offices at: **888.414.1041** or **818.888.0050** or visit **www.avmindustries.com**

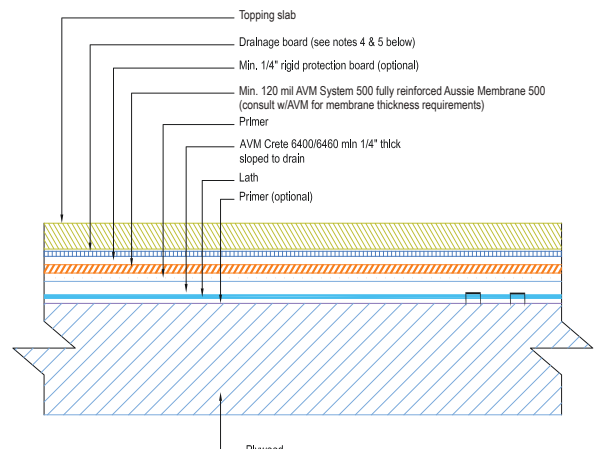
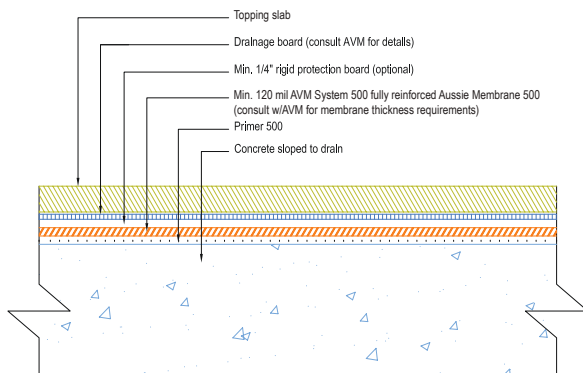
## System Specifications

See next page.

The following coverages are based on controlled tests. Actual coverages may vary.

Technical Information		
Color	Dark brown. After drying: black	
Specific Gravity	1.189 gr/cm <sup>2</sup>	
Coverage: (Varies depending on substrate)	24-25 sq.ft./Gal. @ 60 Dry Mills	
Flash Point	Non-flammable	
Service Temperature	15°F-177°F (-10°C to +80°C)	
Application Temperature	42°F-132°F (+5°C to 55°C)	
Solid Content	64%	
Tensile Strength	>15.4 Lbs (>7 kg)	ASTM D 412
Elongation at break	>1000%	ASTM D 412
Resistance to water pressure 1 tm 24 hr	Passed	ASTM D751
Water vapor transmission	4.0 gr/m <sup>2</sup> 24 hr	ASTM D 96
Recovery	85%	IS 1536
Creep At 177°F (80°C)	No Creep	DIN 52123
Resistance to Standing Water	Passed	ASTM D 2939
Bacterial Attack in soil 30 days @ 105°F (40°C)	Passed	ASTM D 2939
Crack bridging	>3/16" (>5mm)	IS 1731
Certifications	ISO 9002, Green Label, I.Q. Net (International Certification Network)	

Item / Component	Packaging	Approx Shipping Weights	VOC
AVM Primer 500	2.0/5.0 gal. pails	2.0/5.0 gal. 15/39 lbs.	15 Grams/Liter
AVM Aussie Membrane 500	5.0 gal. pails	5.0 gal. 52.5 lbs	19 Grams/Liter



For a complete list of details in CAD or PDF, please visit our website at [www.avmindustries.com](http://www.avmindustries.com).

AVM Industries, Inc.  
8245 Remmet Ave, Canoga Park, CA 91304  
888.414.1041 818.888.0050

Quality Waterproofing Products



[www.avmindustries.com](http://www.avmindustries.com)



# MIN. THICKNESS TABLE & PROTECTION GUIDELINES

Sections - 071000 / 071400 / 071416



## AVM System 500 Aussie Membrane 500

Heavy Duty Below Grade Bituminous Waterproofing Membrane

ICC ESR-2503  
L.A. RR#: 25550

Depth Range	Min Thickness of Cured Membrane	Authorized Installer Required	Protection & Drainage System Required
<b>Retaining Walls and Planters</b>			
Up to 4 feet deep	60 Mils	No	Foam Board or AVM Drain Board 6000 + Drainage System
4-8 feet deep	60 Mils	Recommended	AVM Drain Board 6000 + AVM Bottom Drain or French Drain
8-12 feet deep	90 Mils	Recommended	AVM Drain Board 6000 + AVM Bottom Drain or French Drain
Deeper than 12 Feet	90-180+ Mils, Consult with AVM	Recommended	AVM Drain Board 6000 + AVM Bottom Drain or French Drain
<b>Between Slab Waterproofing</b>			
For all applications	90-210 Mils + Fabric Reinforcement. Consult with AVM	Recommended	AVM Drain Board 9000
<b>Under Slab Vapor Barriers</b>			
For all applications	60+ Mils, consult with AVM	Recommended	AVM Drain Board 9000 For Drainage system (if needed), Consult with AVM
<b>Roof Pavers/Pedestals</b>			
For all applications	120-210 Mils + Fabric Reinforcement. Consult with AVM	Yes	¼" Rigid Protection Board, Consult with AVM
<b>Roof Gardens (Green Roofs)</b>			
For all applications	120-210 Mils + Fabric Reinforcement. Consult with AVM	Yes	Consult with AVM

### Protection Types

- ▶ Rigid Protection Board: Rigid Asphaltic Boards such as Apoc Protective Panels made by Gardner or Equal. Typically ¼ inch.
- ▶ Drainage Board: AVM Drain Board 6000 or high compression strength, AVM Drain Board 9000. Refer to details or consult with AVM. Drainage board must cover entire area of Aussie Membrane 500!
- ▶ Drainage System: Use AVM Bottom Drain 12" system, a French Drain system or equal to remove water and release hydrostatic pressure. If using a French Drain system, it must use a min 4" diameter perforated pipe and wrapped in the drainage mat or geotextile fabric.

### Notes

1. Mils thickness specifications are for "DRY FILM" thickness
2. AVM Bottom Drain or French Drain systems are not applicable for installations over horizontal surfaces.
3. AVM Bottom Drain or French Drain systems are recommended, but not required for applications less than 24" deep.
4. Concrete Cant strips at 45° are required at cold joints and other horizontal-to-vertical intersections.
5. On vertical applications - "Termination Bars" are required where the drainage mat terminates.

AVM Industries, Inc.  
8245 Remmet Ave, Canoga Park, CA 91304  
888.414.1041 818.888.0050

Quality Waterproofing Products



[www.avmindustries.com](http://www.avmindustries.com)



## AVM Primer 500

**Multi-Purpose Water-Based Primer for Bituminous and Liquid Rubber Membranes.**

Sections Sections - 071000 / 071300 / 071313 / 071326 / 071352 / 071400 / 071416 / 071800 / 071813 / 093000 / 093400

### Product Name

**AVM Primer 500**

### Manufactured by

AVM Industries, Inc.  
8245 Remmet Ave, Canoga Park, CA 91304  
888.414.1041 818.888.0050  
www.avmindustries.com

### Product Description

**AVM Epoxy Primer 500** is a Hi-Adhesion low VOC Water-Based Primer for bituminous and liquid rubber membranes.

### Adbantages

- Long lasting Adhesion
- Bonds to many different substrates and surfaces
- Low Odor
- Can have foot traffic after 20-30 minutes @70°F.
- Interior or Exterior

### Where to Use

**AVM Primer 500** is a multi-purpose water-based primer that will bond to most substrates including concrete, wood, metal, cement boards, drywall, old tiles, stone etc.

### Warranty

**AVM Primer 500** is sold as part of several AVM waterproofing systems. Please refer to those system's warranties for details. For complete warranty information, go to [www.avmindustries.com](http://www.avmindustries.com).

### Delivery, Storage, and Handling

- Delivery of the **AVM Primer 500** components must be in their original sealed containers, with manufacturer's name and label intact.
- Handle and store containers in accordance with printed instructions.
- Store at temperatures between 50°F and 90°F. Do not store materials in direct sunlight or where they may be damaged by water or rain.
- Keep all materials out of the reach of children.
- If irritation occurs during use, liberally flush affected areas with water. If irritation continues, see a physician immediately.
- Shelf life is one year from manufacturing date in sealed, unopened containers.

### Project Conditions

- Do not apply materials at temperatures below 40°F, or if precipitation is imminent, or above 100°F if applying in direct sun light.
- Provide adequate ventilation during installation.
- Warn personnel against hazards of materials to skin and eyes.
- Protect adjacent surfaces which could be damaged during the application.

### System Application

**Preparation:** The substrate surfaces must be structurally sound, clean, dry, and free of efflorescence, dust, dirt, silicone, oil and other contaminants that would prevent the proper penetration and/or bonding of the **AVM Primer 500** to the substrate. Joints or cracks should be sealed or filled prior to the application of the **AVM Primer 500**. For improved bonding and long lasting adhesion, it is recommended to remove all existing coatings, paints, etc, prior to the application. Depending on existing conditions, additional preparation such as sandblasting or water-blasting might be required, especially when bonding to older cementitious surfaces (Concrete, blocks, slabs, bricks, etc). Metal flashings and other sheet metal based surfaces need to be thoroughly cleaned and have all oils, grease etc removed. Lightly sanding these surfaces is highly recommended since it will significantly increase bonding.

### Installation

The **AVM Primer 500** can be applied using a sprayer, a brush or roller. When applying with a roller, use a small nap roller cover. Do not over apply material. (Apply a thin coat). If necessary, after the first coat has cured, apply a second coat. Highly porous or difficult to paint substrates, such as split face or Routed blocks, raked joints, etc, may need a second coat to ensure complete and proper coverage and protection. A second application can be made any time after the first coat has sufficiently cured. (Typically, 30 minutes in 70°F and 50% relative humidity)

### Quality Control

- Visually inspect all coated surfaces to ensure a full and proper coating application, especially at corners, drainage scuppers and other hard-to-reach areas.
- All unsatisfactory areas shall be re-coated before proceeding with other coatings.

### Protection of Installed Work

For best results the completed sections shall be protected from all pedestrian traffic until the surface is sufficiently cured. (The amount of drying time may vary depending on temperature and humidity conditions) Typically, light foot traffic may resume after 30-60 minutes.

### Applying Coatings over the primer

All coatings must be applied over the primer within 24 hours of primer application. If more than 24 hours have gone by since the primer was applied, RE-PRIME!

### Clean Up

Tools may be cleaned with water before primer is dry.

**Coverages:** Over concrete or metal approx 300 Sq.Ft. per gallon. Over plywood approx 250 Sq.Ft. per gallon. Coverages may vary based on project conditions, method of application and other factors.

**Caution:** Wear eye protection. Avoid eye contact or prolonged contact with skin. Wash thoroughly after handling. If eye irritation occurs, liberally flush for 15 minutes & consult a physician immediately.

**Shelf Life:** One year from date of manufacture in original, sealed, unopened containers.

### Availability and Cost

Contact AVM Industries or your approved applicator for pricing and availability.

### Technical Services

Technical services are available by contacting our offices at: **888.414.1041** or **818.888.0050** or visit [www.avmindustries.com](http://www.avmindustries.com)

The following coverages are based on controlled tests. Actual coverages may vary.

Material	Over Concrete or Metal Surfaces	Over wood, sealed or textured surfaces	Over Porous Surfaces (CMU)
AVM Epoxy Primer 500	300 sq. ft./gal.	250 sq. ft./gal	150 sq.ft./gal

Packaging	Qty/Pallet
2 and 5 gal pails	15 / 39 lbs.

For a complete list of details in CAD or PDF, please visit our website at [www.avmindustries.com](http://www.avmindustries.com).

AVM Industries, Inc.  
8245 Remmet Ave, Canoga Park, CA 91304  
888.414.1041 818.888.0050

Quality Waterproofing Products

[www.avmindustries.com](http://www.avmindustries.com)

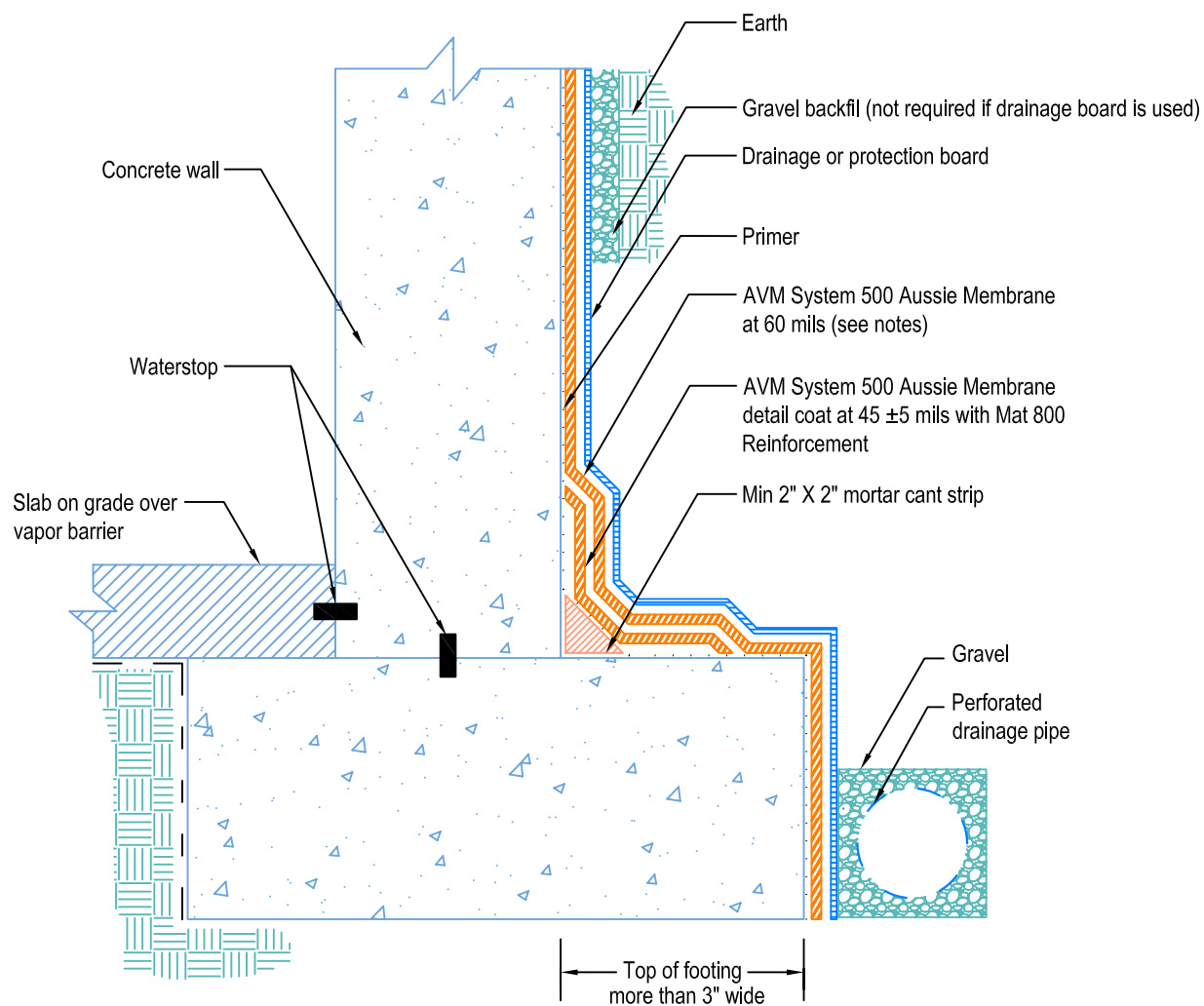


DETAIL # :  
AVM-500-0002-C

AVM System 500  
Aussie Membrane

VIEW TYPE:  
Cut Sheet

Retaining Walls  
Slab on Grade at Top of Footing  
**AVM System 500 Aussie Membrane**  
Fluid Applied Waterproofing



Notes:

1. Aussie Membrane 500 is a water-based bitumen (roller or brushed applied) for below-grade, between-slab, planters, roof-gardens and similar type waterproofing
2. For proper membrane thickness and appropriate protection and drainage, refer to AVM System 500, Aussie Membrane's "min. thickness table"
3. Contact AVM if no drain board or protection board is specified
4. AVM's "bottom drain 12" may be accepted in lieu of the perforated drainage pipe (French drain.) Check local building codes for approval.
5. Exposed top of footing is more than 3".
6. Inside corner (wall-to-footing) shown with water stop

AVM Industries, Inc.  
8245 Remmet Ave, Canoga Park, CA 91304

Quality Waterproofing Products

888.414.1041 818.888.0050  
www.avmindustries.com

FILE NAME: 0500-0002-C-Retaining-Walls-Slab-On-Grade-At-Top-Of-Footing-CS

Revision Date: 02/23/2012  
Protected by Copyright © AVM Industries, Inc.

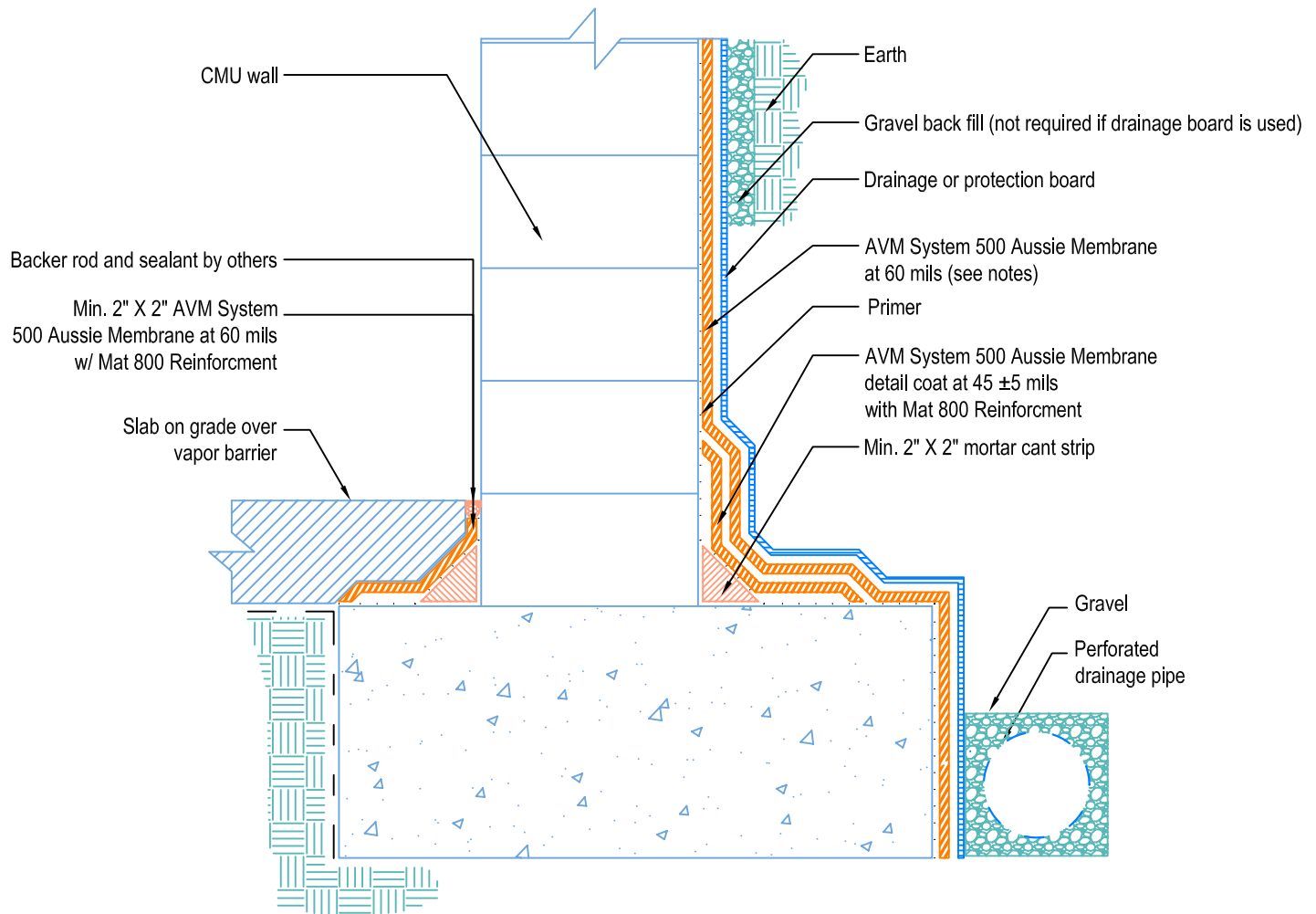


DETAIL # :  
AVM-500-0004-C

AVM System 500  
Aussie Membrane

VIEW TYPE:  
Cut Sheet

Retaining Walls  
Slab on Grade at Top of Footing  
**AVM System 500 Aussie Membrane**  
Fluid Applied Waterproofing



Notes:

1. Aussie Membrane 500 is a water-based bitumen (roller or brushed applied) for below-grade, between-slab, planters, roof-gardens and similar type waterproofing
2. For proper membrane thickness and appropriate protection and drainage, refer to AVM System 500, Aussie Membrane's "min. thickness table"
3. Contact AVM if no drain board or protection board is specified
4. AVM's "bottom drain 12" may be accepted in lieu of the perforated drainage pipe (French drain.) Check local building codes for approval.
5. Inside corner (wall-to-footing) shown with Aussie Membrane corner detail.

AVM Industries, Inc.  
8245 Remmet Ave, Canoga Park, CA 91304

Quality Waterproofing Products

888.414.1041 818.888.0050  
www.avmindustries.com

FILE NAME: 0500-0004-C-Retaining-Walls-Slab-On-Grade-At-Top-Of-Footing-CS.dwg

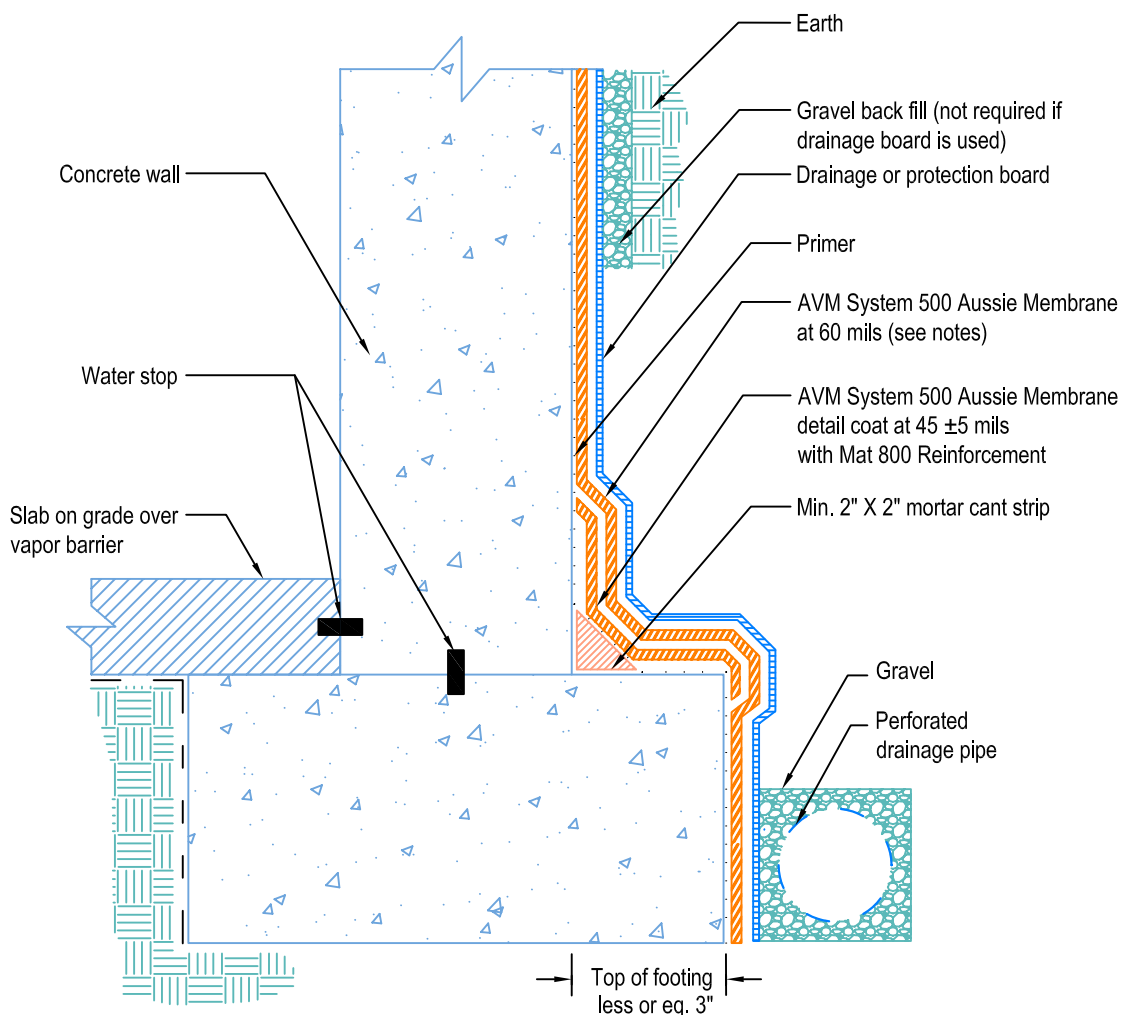
Revision Date: 02/23/2012  
Protected by Copyright © AVM Industries, Inc.

DETAIL # :  
AVM-500-0006-C

AVM System 500  
Aussie Membrane

VIEW TYPE:  
Cut Sheet

Retaining Walls  
Slab on Grade at Top of Footing  
**AVM System 500 Aussie Membrane**  
Fluid Applied Waterproofing



Notes:

1. Aussie Membrane 500 is a water-based bitumen (roller or brushed applied) for below-grade, between-slab, planters, roof-gardens and similar type waterproofing
2. For proper membrane thickness and appropriate protection and drainage, refer to AVM System 500, Aussie Membrane's "min. thickness table"
3. Contact AVM if no drain board or protection board is specified
4. AVM's "bottom drain 12" may be accepted in lieu of the perforated drainage pipe (French drain.) Check local building codes for approval.
5. Exposed top of footing is less than 3".
6. Inside corner (wall-to-footing) shown with water stop.

AVM Industries, Inc.  
8245 Remmet Ave, Canoga Park, CA 91304

Quality Waterproofing Products

888.414.1041 818.888.0050  
www.avmindustries.com

FILE NAME: 0500-0006-C-Retaining-Walls-Slab-On-Grade-At-Top-Of-Footing-CS.dwg

Revision Date: 02/23/2012  
Protected by Copyright © AVM Industries, Inc.

DETAIL # :  
AVM-500-0008-C

AVM System 500  
Aussie Membrane

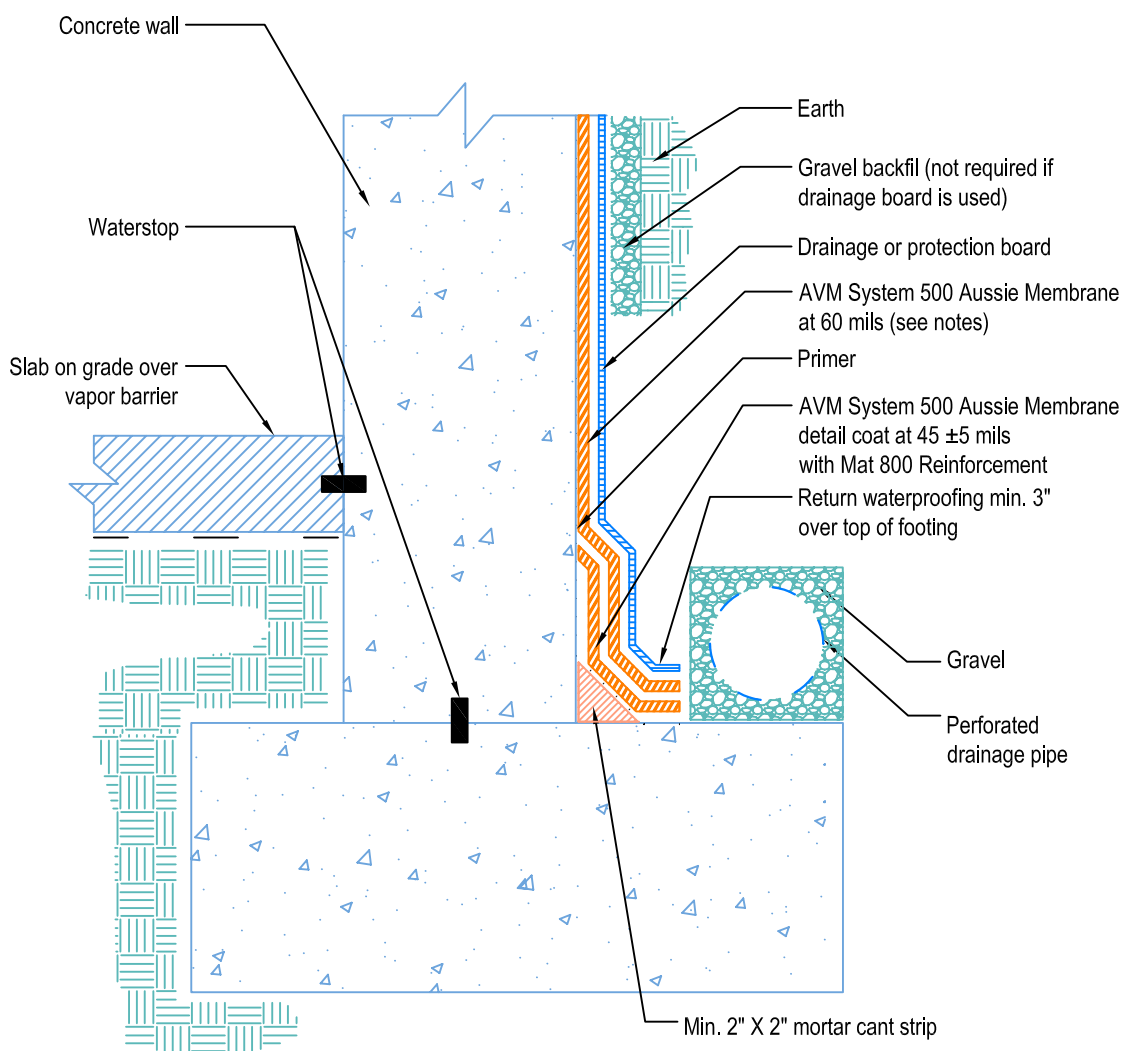
VIEW TYPE:  
Cut Sheet

# Retaining Walls

## Elevated Slab on Grade at Top of Footing

### AVM System 500 Aussie Membrane

### Fluid Applied Waterproofing



#### Notes:

1. Aussie Membrane 500 is a water-based bitumen (roller or brushed applied) for below-grade, between-slab, planters, roof-gardens and similar type waterproofing
2. For proper membrane thickness and appropriate protection and drainage, refer to AVM System 500, Aussie Membrane's "min. thickness table"
3. Contact AVM if no drain board or protection board is specified
4. AVM's "bottom drain 12" may be accepted in lieu of the perforated drainage pipe (French drain.) Check local building codes for approval.
5. Inside corner (wall-to-footing) shown with water stop

DETAIL # :  
AVM-500-0010-C

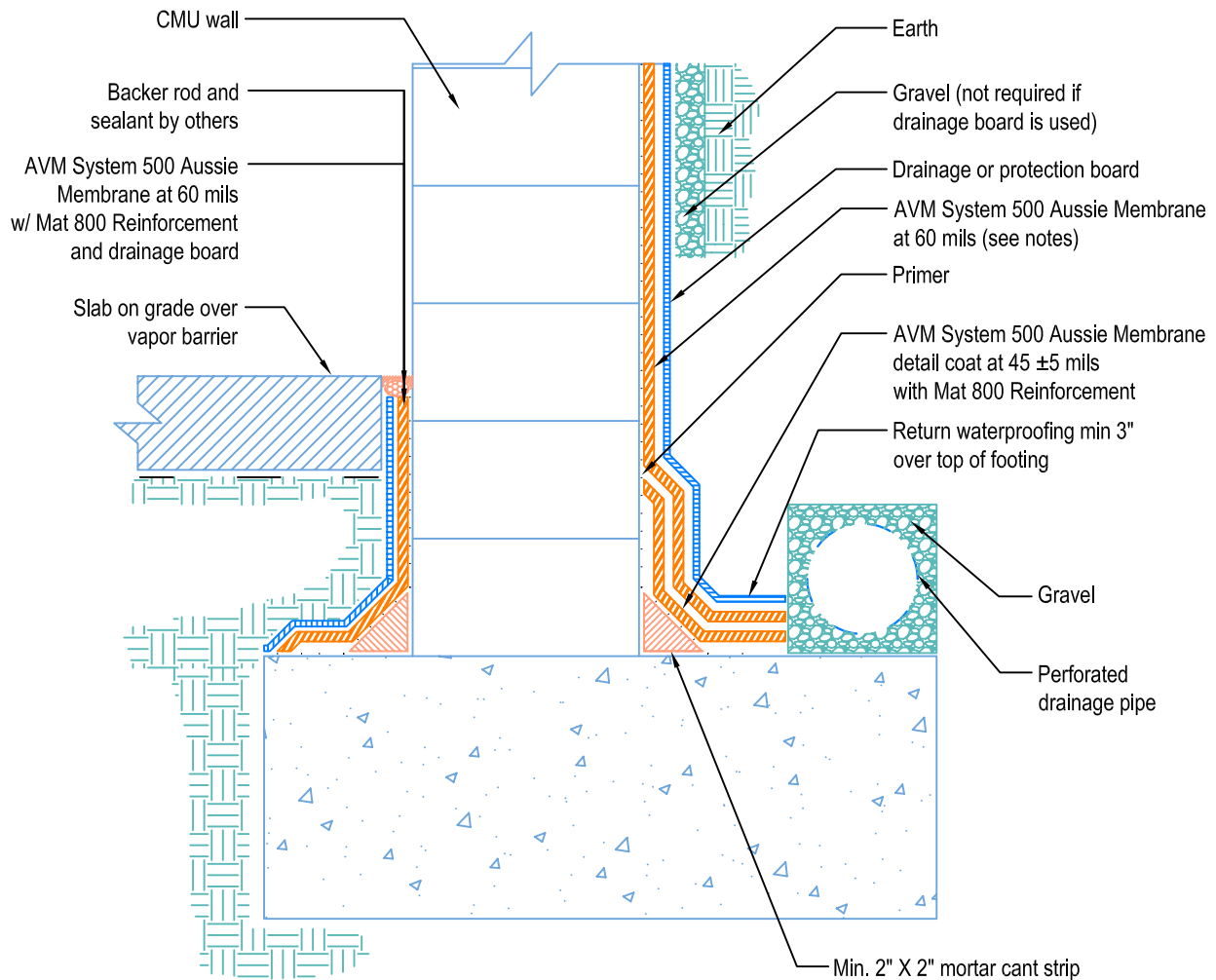
AVM System 500  
Aussie Membrane

VIEW TYPE:  
Cut Sheet

## Retaining Walls

### Elevated Slab on Grade at Top of Footing

## AVM System 500 Aussie Membrane Fluid Applied Waterproofing



#### Notes:

1. Aussie Membrane 500 is a water-based bitumen (roller or brushed applied) for below-grade, between-slab, planters, roof-gardens and similar type waterproofing
2. For proper membrane thickness and appropriate protection and drainage, refer to AVM System 500, Aussie Membrane's "min. thickness table"
3. Contact AVM if no drain board or protection board is specified
4. AVM's "bottom drain 12" may be accepted in lieu of the perforated drainage pipe (French drain.) Check local building codes for approval.
5. Inside corner (wall-to-footing) shown with Aussie Membrane corner detail.

AVM Industries, Inc.  
8245 Remmet Ave, Canoga Park, CA 91304

Quality Waterproofing Products

888.414.1041 818.888.0050  
www.avmindustries.com

FILE NAME: 0500-0010-C-Retaining-Walls-Elevated-Slab-On-Grade-At-Top-Of-Footing-CS.dwg

Revision Date: 02/23/2012  
Protected by Copyright © AVM Industries, Inc.



DETAIL # :  
AVM-500-1502-C

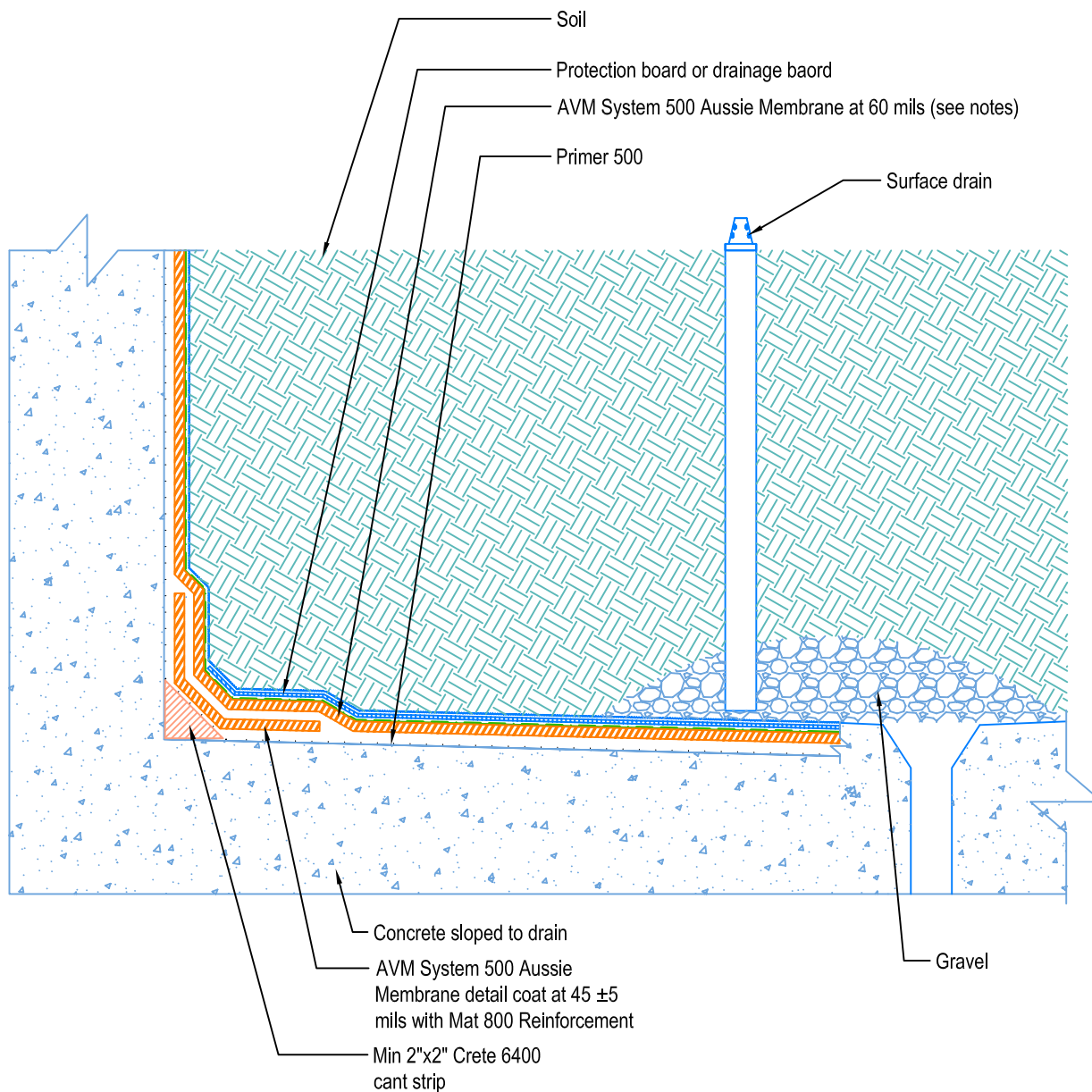
AVM System 500  
Aussie Membrane

VIEW TYPE:  
Cut Sheet

# Planter Basic Detail

## AVM System 500 Aussie Membrane

### Fluid Applied Waterproofing



#### Notes:

1. Aussie Membrane 500 is a water-based bitumen (roller or brushed applied) for below-grade, between-slab, planters, roof-gardens and similar type waterproofing
2. For proper membrane thickness and appropriate protection and drainage, refer to AVM System 500, Aussie Membrane's "min. thickness table"
3. Contact AVM if no drain board or protection board is specified
4. Planters must have sufficient slope, sufficient drains and proper drainage systems to effectively evacuate excessive water.

AVM Industries, Inc.  
8245 Remmet Ave, Canoga Park, CA 91304

Quality Waterproofing Products

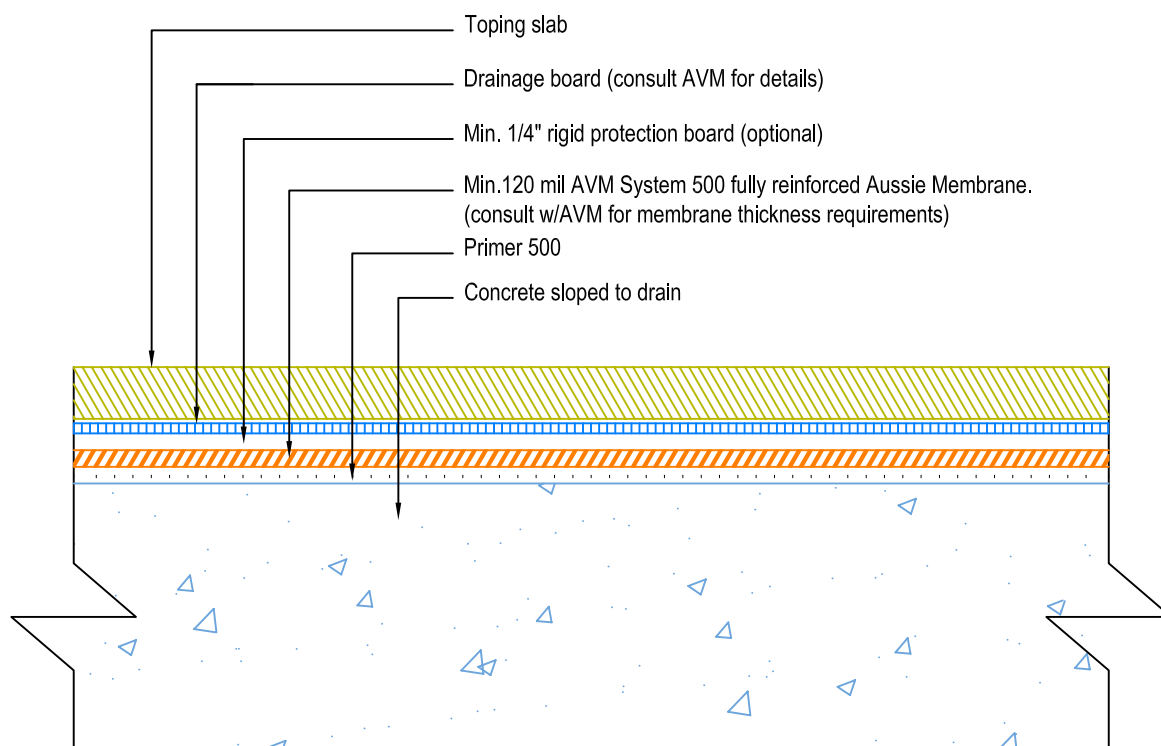
888.414.1041 818.888.0050  
www.avmindustries.com

DETAIL # :  
AVM-500-2002-C

AVM System 500  
Aussie Membrane

VIEW TYPE:  
Cut Sheet

# Topping Slab on Concrete Substrate over AVM System 500 Aussie Membrane Fluid Applied Waterproofing



## Notes:

1. Aussie Membrane 500 is a water-based bitumen (roller or brushed applied) for below-grade, between-slab, planters, roof-gardens and similar type waterproofing
2. For proper membrane thickness and appropriate protection and drainage, refer to AVM System 500, Aussie Membrane's "min. thickness table"
3. Contact AVM if no drain board or protection board is specified
4. Topping slabs for pedestrian traffic use AVM Drain Board 6000
5. Topping slabs for vehicular traffic use AVM Drain Board 9000
6. For extra protection, use asphaltic panels below the drainage boards.

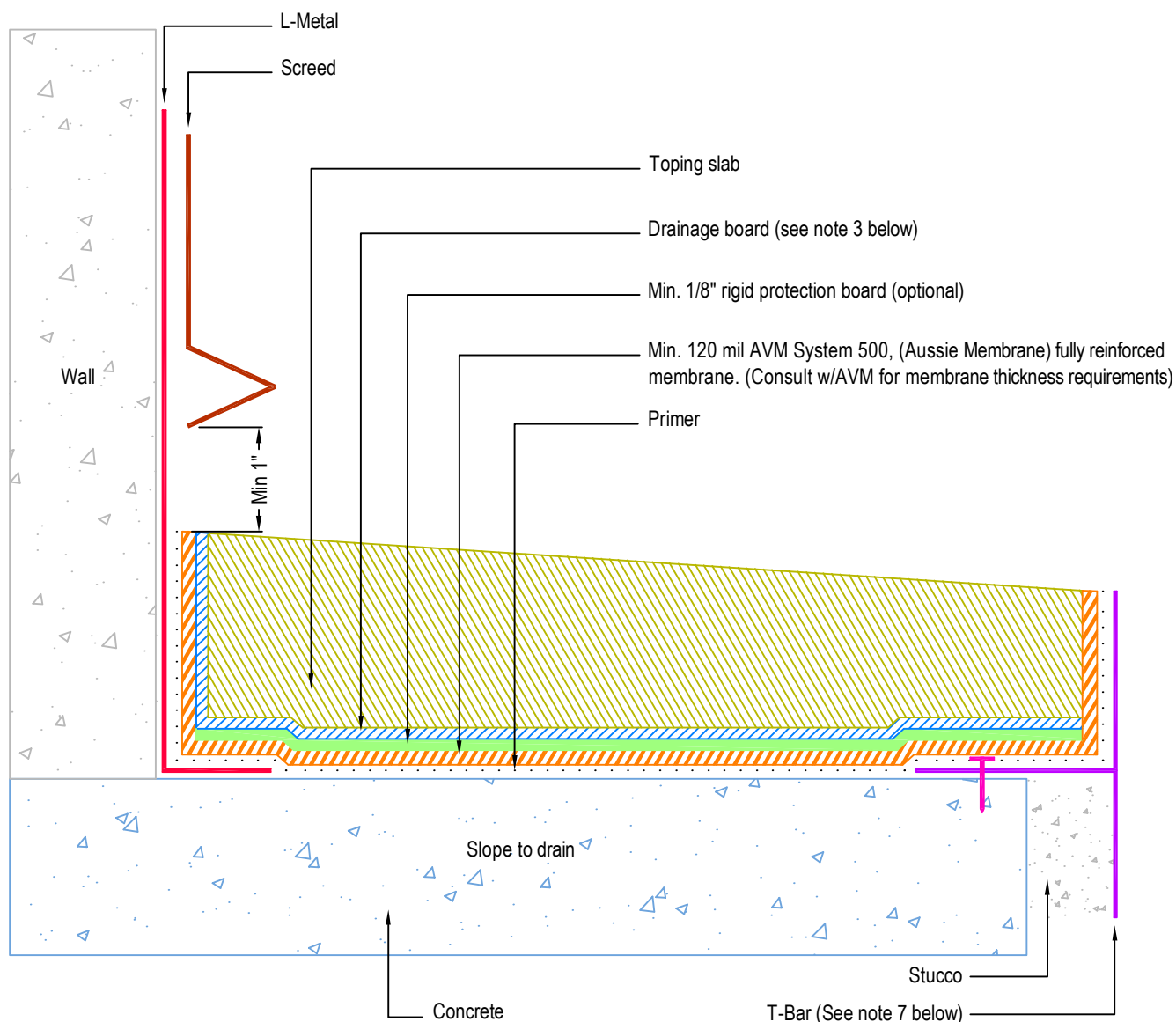
AVM Industries, Inc.  
8245 Remmet Ave, Canoga Park, CA 91304

Quality Waterproofing Products

888.414.1041 818.888.0050  
www.avmindustries.com

DETAIL # :  
AVM-500-2002-C  
AVM System 500  
Aussie Membrane  
VIEW TYPE:  
Cut Sheet

# Topping Slab on Concrete Substrate over AVM System 500 Aussie Membrane with Drain Board, Fluid Applied Waterproofing (Heavy Duty)



## Notes:

1. Aussie Membrane 500 is a water-based bitumen (roller or brushed applied) for below-grade, between-slab, planters, roof-gardens and similar type waterproofing.
2. Contact AVM if no drain board is specified
3. For drainage/protection - use AVM Drain Board 6000. For topping slabs over 4" thick or vehicular applications, use AVM Drain Board 9000
4. This assembly is for pedestrian traffic use only. For vehicular applications and other heavy loads, contact AVM for approval.
5. For extra protection, use 1/8" or 1/4" thick asphaltic protective panels below the drain board.
6. Substrates must be sloped to drains and/or edges before membrane installation. (Min 1/4" per foot)
7. If water is to drain over the edge, then edge metals (if used) MUST have sufficient weep holes (at least every 6") and must be strong enough (thick enough) to act as a concrete form.
8. When drainage is over the edges, edge assemblies must allow for proper water evacuation. (None should trap water) Consult AVM for details.
9. Reinforce the Aussie Membrane with AVM Mat 800 at all corners, metal transitions, penetrations, gaps, drains, etc.
10. For extra protection, lay down 1/8" or 1/4" thick asphaltic protective panels before installing the drain board. (Required for topping slabs over 4" thick or vehicular applications)

AVM Industries, Inc.  
8245 Remmet Ave, Canoga Park, CA 91304

Quality Waterproofing Products

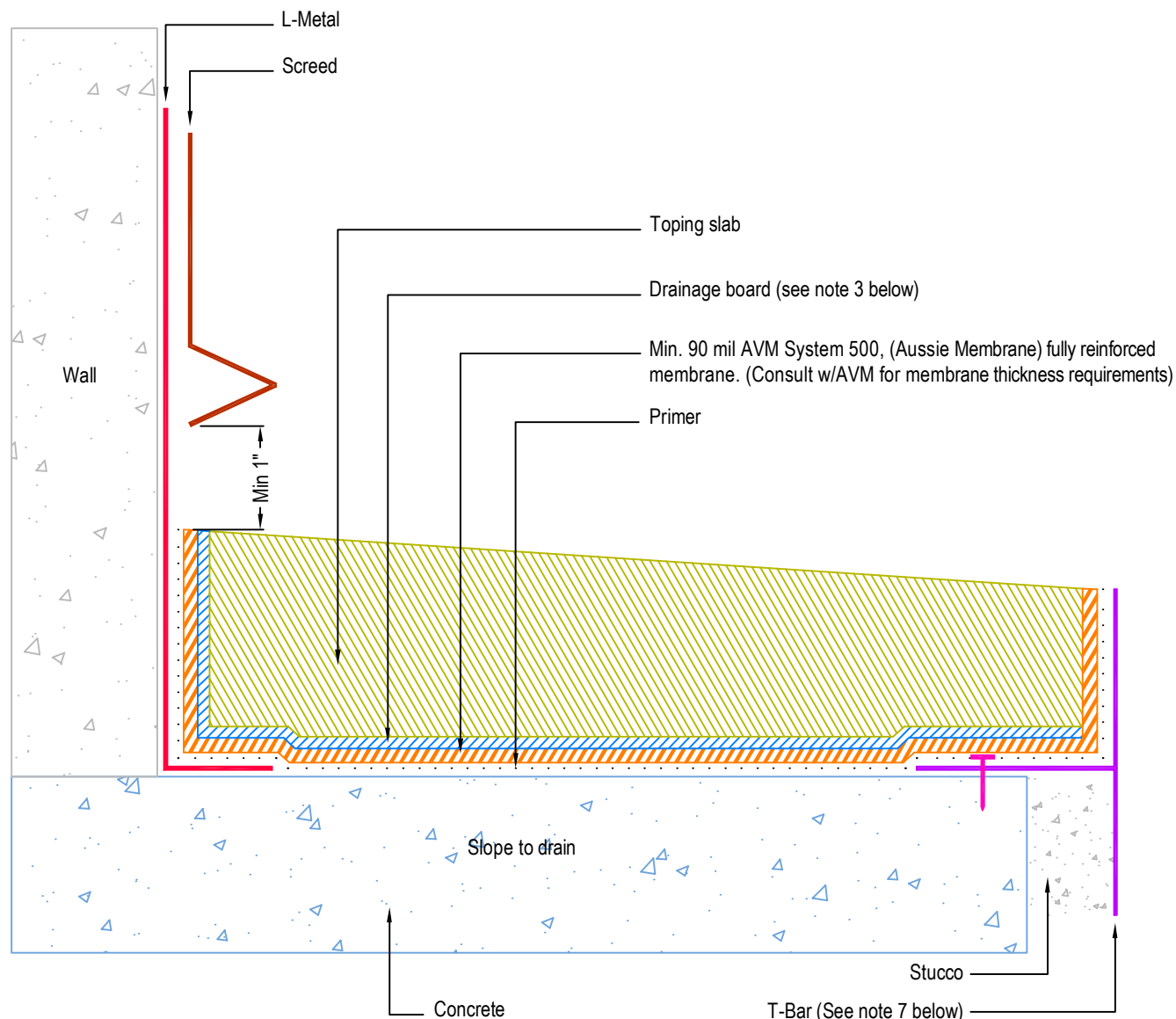
888.414.1041 818.888.0050  
www.avmindustries.com

FILE NAME: 0500-2002-C-Topping-Slab-On-Concrete-HD-CS

Revision Date: 09/11/2014  
Protected by Copyright © AVM Industries, Inc.

DETAIL # :  
AVM-500-2022-C  
AVM System 500  
Aussie Membrane  
VIEW TYPE:  
Cut Sheet

# Topping Slab on Concrete Substrate over AVM System 500 Aussie Membrane with Drain Board, Fluid Applied Waterproofing (Medium Duty)



## Notes:

1. Aussie Membrane 500 is a water-based bitumen (roller or brushed applied) for below-grade, between-slab, planters, roof-gardens and similar type waterproofing.
2. Contact AVM if no drain board is specified
3. For drainage/protection - use AVM Drain Board 6000. For topping slabs over 4" thick or vehicular applications, use AVM Drain Board 9000
4. This assembly is for pedestrian traffic use only. For vehicular applications and other heavy loads, contact AVM for approval.
5. Substrates must be sloped to drains and/or edges before membrane installation. (Min 1/4" per foot)
6. If water is to drain over the edge, then edge metals (if used) MUST have sufficient weep holes (at least every 6") and must be strong enough (thick enough) to act as a concrete form.
7. When drainage is over the edges, edge assemblies must allow for proper water evacuation. (None should trap water) Consult AVM for details.
8. Reinforce the Aussie Membrane with AVM Mat 800 at all corners, metal transitions, penetrations, gaps, drains, etc.
9. For extra protection, lay down 1/8" or 1/4" thick asphaltic protective panels before installing the drain board. (Required for topping slabs over 4" thick or vehicular applications)

AVM Industries, Inc.  
8245 Remmet Ave, Canoga Park, CA 91304

Quality Waterproofing Products

888.414.1041 818.888.0050  
www.avmindustries.com

FILE NAME: 0500-2022-C-Topping-Slab-On-Concrete-MD-CS

Revision Date: 09/11/2014  
Protected by Copyright © AVM Industries, Inc.

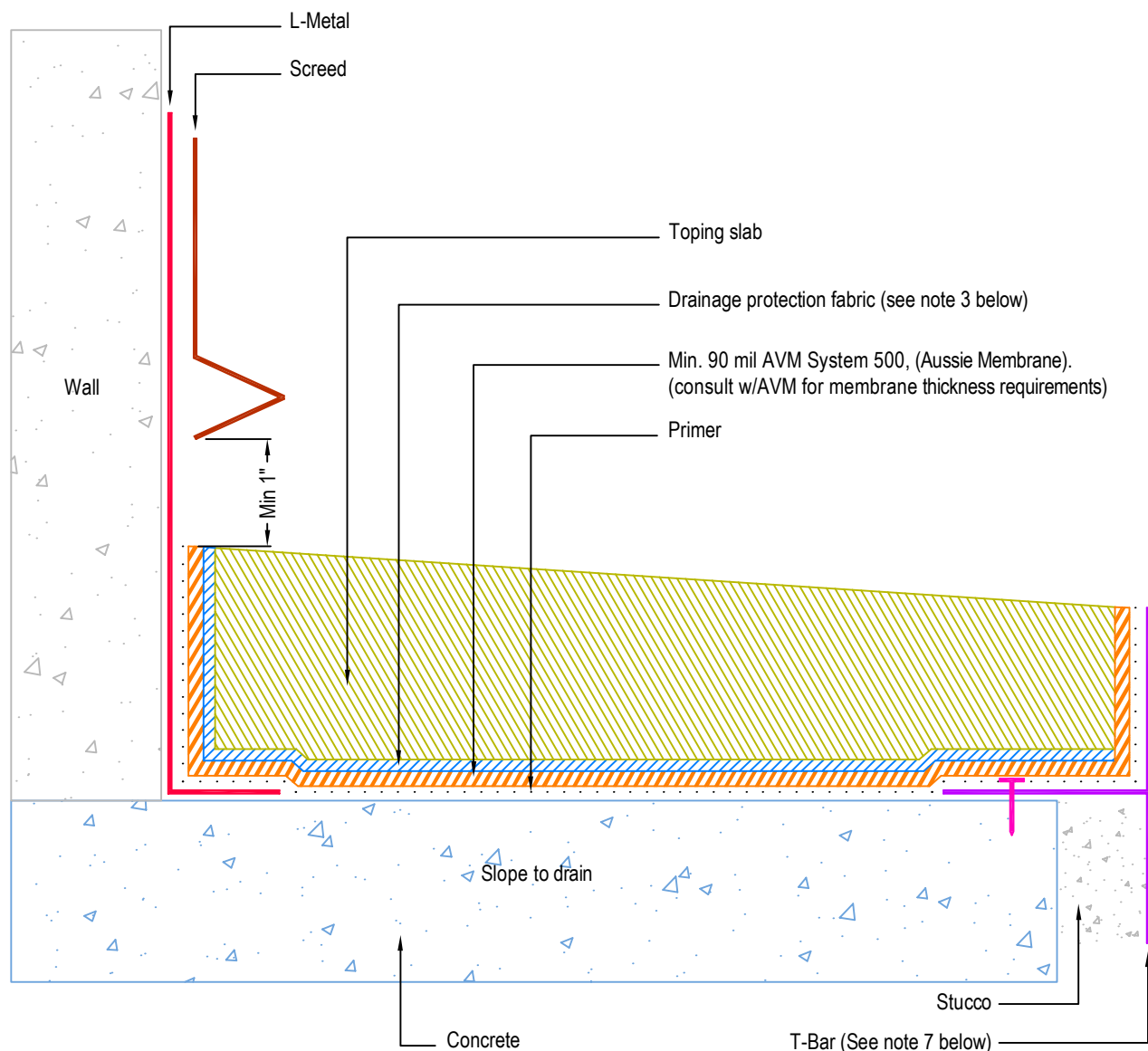


DETAIL # :  
AVM-500-2042-C

AVM System 500  
Aussie Membrane

VIEW TYPE:  
Cut Sheet

# Topping Slab on Concrete Substrate over AVM System 500 Aussie Membrane with Drainage Fabric, Fluid Applied Waterproofing (Light Duty)



## Notes:

1. Aussie Membrane 500 is a water-based bitumen (roller or brushed applied) for below-grade, between-slab, planters, roof-gardens and similar type waterproofing.
2. Contact AVM if no drain board is specified
3. For drainage/protection - use AVM Drainage & Protection Fabric DPF-16. For topping slabs over 4" thick or vehicular applications, use AVM Drain Board 9000.
4. This assembly is for pedestrian traffic use only. For vehicular applications and other heavy loads, contact AVM for approval.
5. Substrates must be sloped to drains and/or edges before membrane installation. (Min 1/4" per foot)
6. If water is to drain over the edge, then edge metals (if used) MUST have sufficient weep holes (at least every 6") and must be strong enough (thick enough) to act as a concrete form.
7. When drainage is over the edges, edge assemblies must allow for proper water evacuation. (None should trap water) Consult AVM for details.
8. Reinforce the Aussie Membrane with AVM Mat 800 at all corners, metal transitions, penetrations, gaps, drains, etc.
9. For extra protection, lay down 1/8" or 1/4" thick asphaltic protective panels before installing the Drainage & Protection Fabric. (Required for topping slabs over 4" thick or vehicular applications)

AVM Industries, Inc.  
8245 Remmet Ave, Canoga Park, CA 91304

Quality Waterproofing Products

888.414.1041 818.888.0050  
www.avmindustries.com

FILE NAME: 0500-2042-C-Topping-Slab-On-Concrete-LD-CS

Revision Date: 09/11/2014  
Protected by Copyright © AVM Industries, Inc.

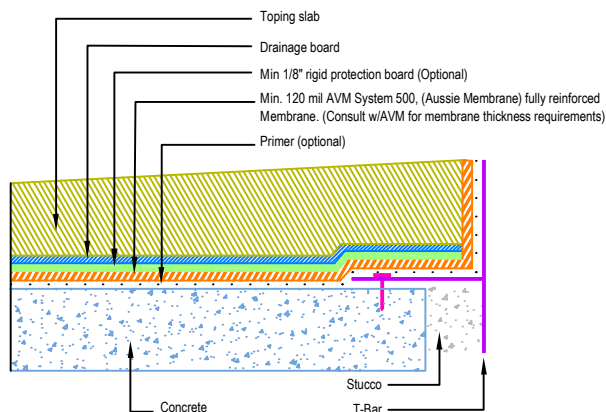
DETAIL # :  
AVM-500-2072-C  
AVM System 500  
Aussie Membrane  
VIEW TYPE:  
Cut Sheet

# Other Edge and Drain Details

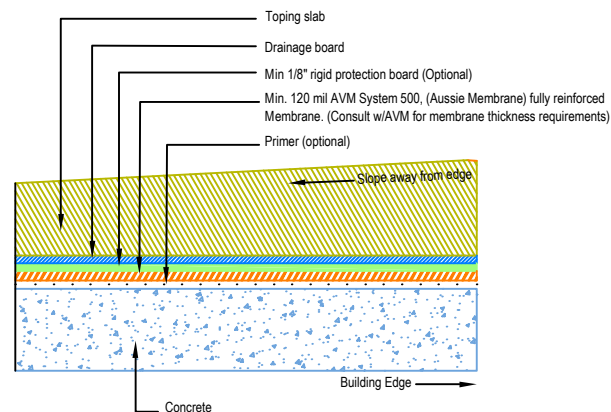
## Topping Slabs Waterproofing on Concrete Substrates

### AVM System 500 Aussie Membrane

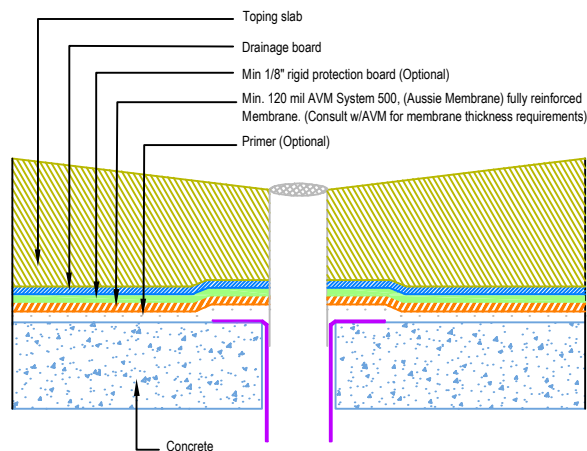
#### Fluid Applied Waterproofing (Heavy Duty)



Slope Away from Edge Detail with Edge Metals  
Heavy Duty



Slope Away from Edge Detail without Edge Metals  
Heavy Duty



Drain Detail on Concrete  
Heavy Duty

#### Notes:

1. See drawing and notes on detail number AVM-500-2002-C for more information.
2. If water is to drain away from the edge into area floor drains, then edge metals do not require weep holes.
3. Reinforce the Aussie Membrane with AVM Mat 800 at all corners, metal transitions, penetrations, gaps, drains, etc.
4. A 2-part concrete drain with a bowl and a flange and built-in weep holes should be used. (Consult AVM for proper drain selection)

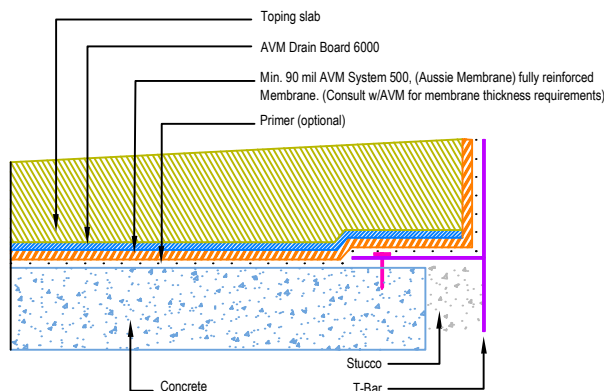
DETAIL # :  
AVM-500-2074-C  
AVM System 500  
Aussie Membrane  
VIEW TYPE:  
Cut Sheet

# Other Edge and Drain Details

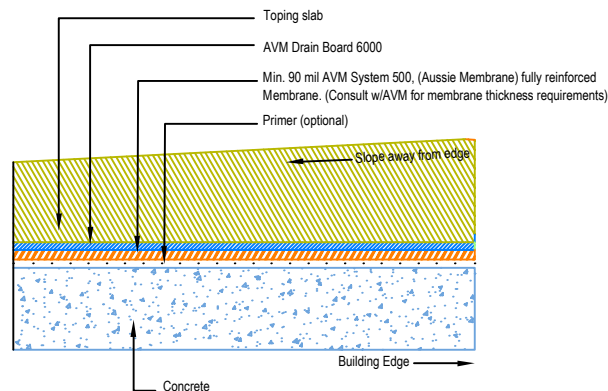
## Topping Slabs Waterproofing on Concrete Substrates

### AVM System 500 Aussie Membrane

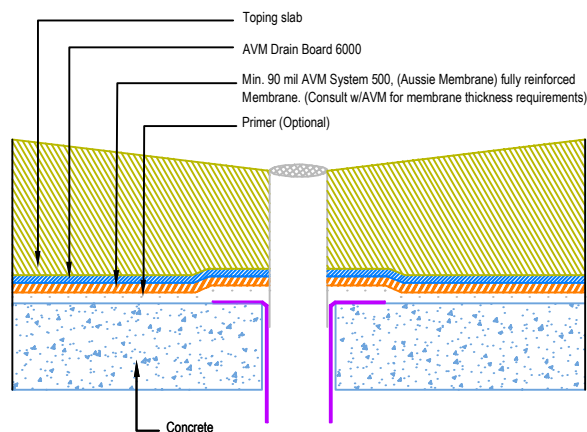
#### Fluid Applied Waterproofing (Medium Duty)



Slope Away from Edge Detail with Edge Metals  
Medium Duty



Slope Away from Edge Detail without Edge Metals  
Medium Duty



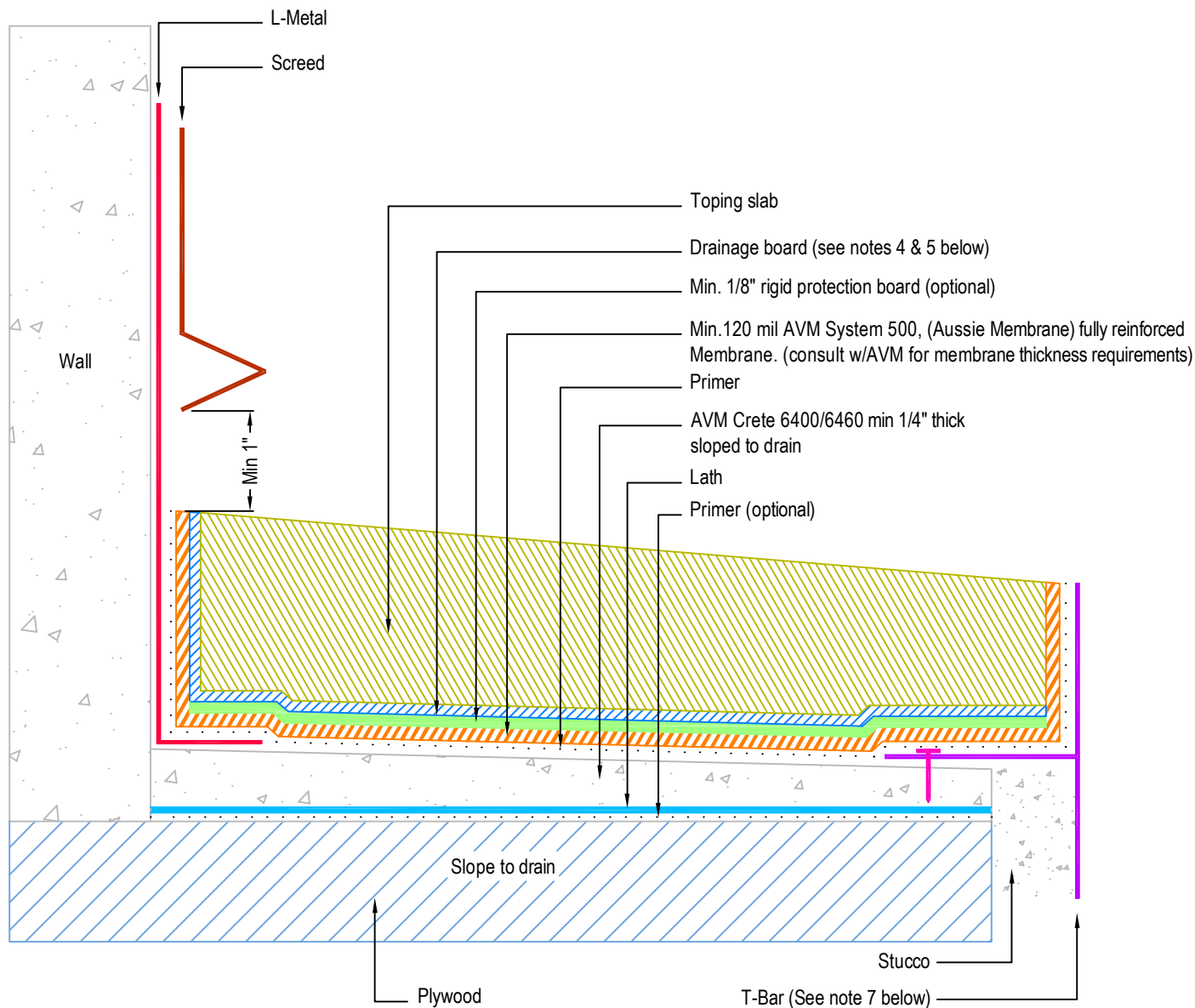
Drain Detail on Concrete  
Medium Duty

#### Notes:

1. See drawing and notes on detail number AVM-500-2022-C for more information on medium duty applications.
2. If water is to drain away from the edge into area floor drains, then edge metals do not require weep holes.
3. Reinforce the Aussie Membrane with AVM Mat 800 at all corners, metal transitions, penetrations, gaps, drains, etc.
4. A 2-part concrete drain with a bowl and a flange and built-in weep holes should be used. (Consult AVM for proper drain selection)

DETAIL # :  
AVM-500-2502-P  
AVM System 500  
Aussie Membrane  
VIEW TYPE:  
Cut Sheet

# Topping Slab on Plywood Substrate over AVM System 500 Aussie Membrane with Drain Board & Thin Crete Base, Fluid Applied Waterproofing (Heavy Duty) Concrete Under Metals



## Notes:

1. Aussie Membrane 500 is a water-based bitumen (roller or brushed applied) for below-grade, between-slab, planters, roof-gardens and similar type waterproofing.
2. Contact AVM if no drain board is specified
3. Crete 6400/6460. Refer to the Crete 6400 or Crete 6460 Spec Sheets or Installation Instructions for more information
4. For drainage/protection - use AVM Drain Board 6000. For topping slabs over 4" thick or vehicular applications, use AVM Drain Board 9000.
5. This assembly is for pedestrian traffic use only. For vehicular applications and other heavy loads, contact AVM for approval.
6. For extra protection, use 1/8" or 1/4" thick rigid protection board below the drain board.
7. Substrates must be sloped to drains and/or edges before membrane installation. (Min 1/4" per foot)
8. If water is to drain over the edge, then edge metals MUST have sufficient weep holes (at least every 6") and must be strong enough (thick enough) to act as a concrete form.
9. When drainage is over the edges, edge assemblies must allow for proper water evacuation. (None should trap water) Consult AVM for details.
10. Reinforce the Aussie Membrane with AVM Mat 800 at all corners, metal transitions, penetrations, gaps, drains, etc.

AVM Industries, Inc.  
8245 Remmet Ave, Canoga Park, CA 91304

Quality Waterproofing Products

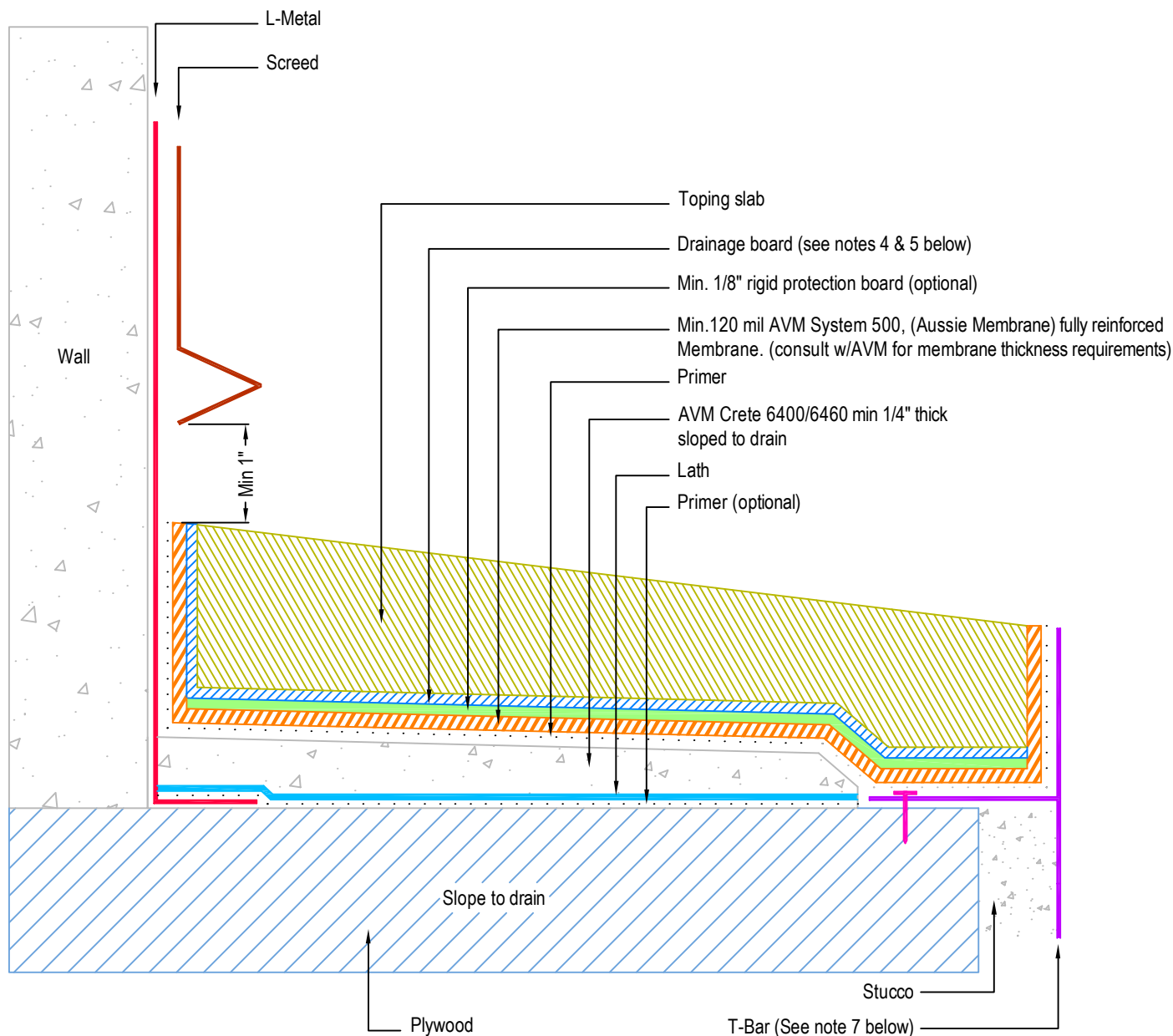
888.414.1041 818.888.0050  
www.avmindustries.com

FILE NAME: 0500-2502-P-Topping-Slab-On-Plywood-HD-CS

Revision Date: 07/18/2014  
Protected by Copyright © AVM Industries, Inc.

DETAIL # :  
AVM-500-2504-P  
AVM System 500  
Aussie Membrane  
VIEW TYPE:  
Cut Sheet

# Topping Slab on Plywood Substrate over AVM System 500 Aussie Membrane with Drain Board & Thin Crete Base, Fluid Applied Waterproofing (Heavy Duty) Concrete Over Metals



## Notes:

1. Aussie Membrane 500 is a water-based bitumen (roller or brushed applied) for below-grade, between-slab, planters, roof-gardens and similar type waterproofing.
2. Contact AVM if no drain board is specified
3. Crete 6400/6460. Refer to the Crete 6400 or Crete 6460 Spec Sheets or Installation Instructions for more information
4. For drainage/protection - use AVM Drain Board 6000. For topping slabs over 4\"
5. This assembly is for pedestrian traffic use only. For vehicular applications and other heavy loads, contact AVM for approval.
6. For extra protection, use 1/8\"
7. Substrates must be sloped to drains and/or edges before membrane installation. (Min 1/4\"
8. If water is to drain over the edge, then edge metals MUST have sufficient weep holes (at least every 6\") and must be strong enough (thick enough) to act as a concrete form.
9. When drainage is over the edges, edge assemblies must allow for proper water evacuation. (None should trap water) Consult AVM for details.
10. Reinforce the Aussie Membrane with AVM Mat 800 at all corners, metal transitions, penetrations, gaps, drains, etc.

AVM Industries, Inc.  
8245 Remmet Ave, Canoga Park, CA 91304

Quality Waterproofing Products

888.414.1041 818.888.0050  
www.avmindustries.com

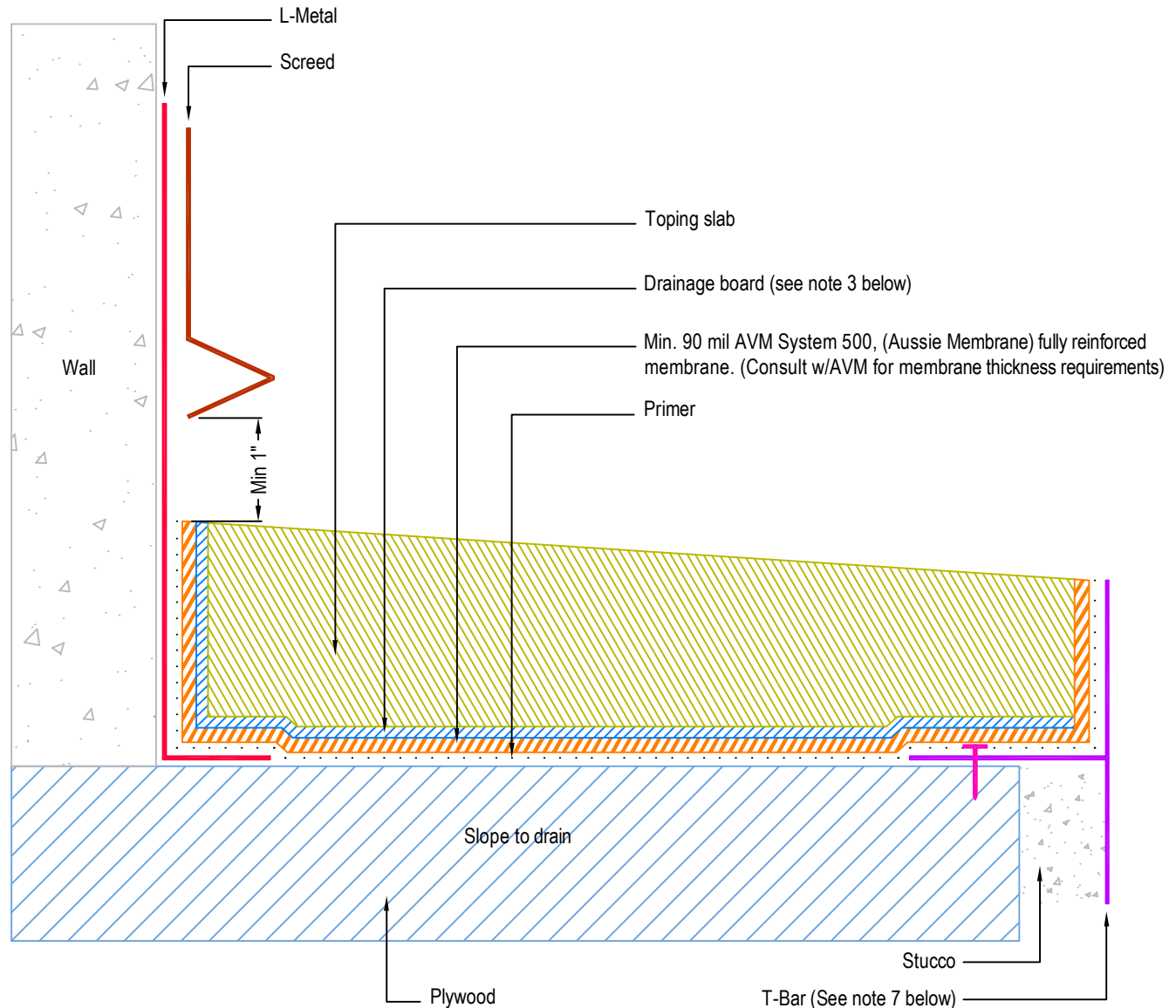
FILE NAME: 0500-2504-P-Topping-Slab-On-Plywood-HD-CS

Revision Date: 07/18/2014  
Protected by Copyright © AVM Industries, Inc.



DETAIL # :  
AVM-500-2522-P  
AVM System 500  
Aussie Membrane  
VIEW TYPE:  
Cut Sheet

# Topping Slab on Plywood Substrate over AVM System 500 Aussie Membrane with Drain Board, Fluid Applied Waterproofing (Medium Duty)



## Notes:

1. Aussie Membrane 500 is a water-based bitumen (roller or brushed applied) for below-grade, between-slab, planters, roof-gardens and similar type waterproofing.
2. Contact AVM if no drain board or protection board is specified
3. For drainage/protection - use AVM Drain Board 6000.
4. Reinforce the Aussie Membrane with AVM Mat 800 at all plywood joints, corners, metal transitions, penetrations, etc.
5. This assembly is for pedestrian traffic use only.
6. Plywood substrates must be sloped to drains and/or edges before membrane installation. (Min 1/4" per foot)
7. If water is to drain over the edge, then edge metals MUST have sufficient weep holes (at least every 6") and must be strong enough (thick enough) to act as a concrete form.
8. When drainage is over the edges, edge assemblies must allow for proper water evacuation. (None should trap water) Consult AVM for details.
9. For extra protection, lay down 1/8" or 1/4" thick asphaltic protective panels before installing the drain board.

AVM Industries, Inc.  
8245 Remmet Ave, Canoga Park, CA 91304

Quality Waterproofing Products

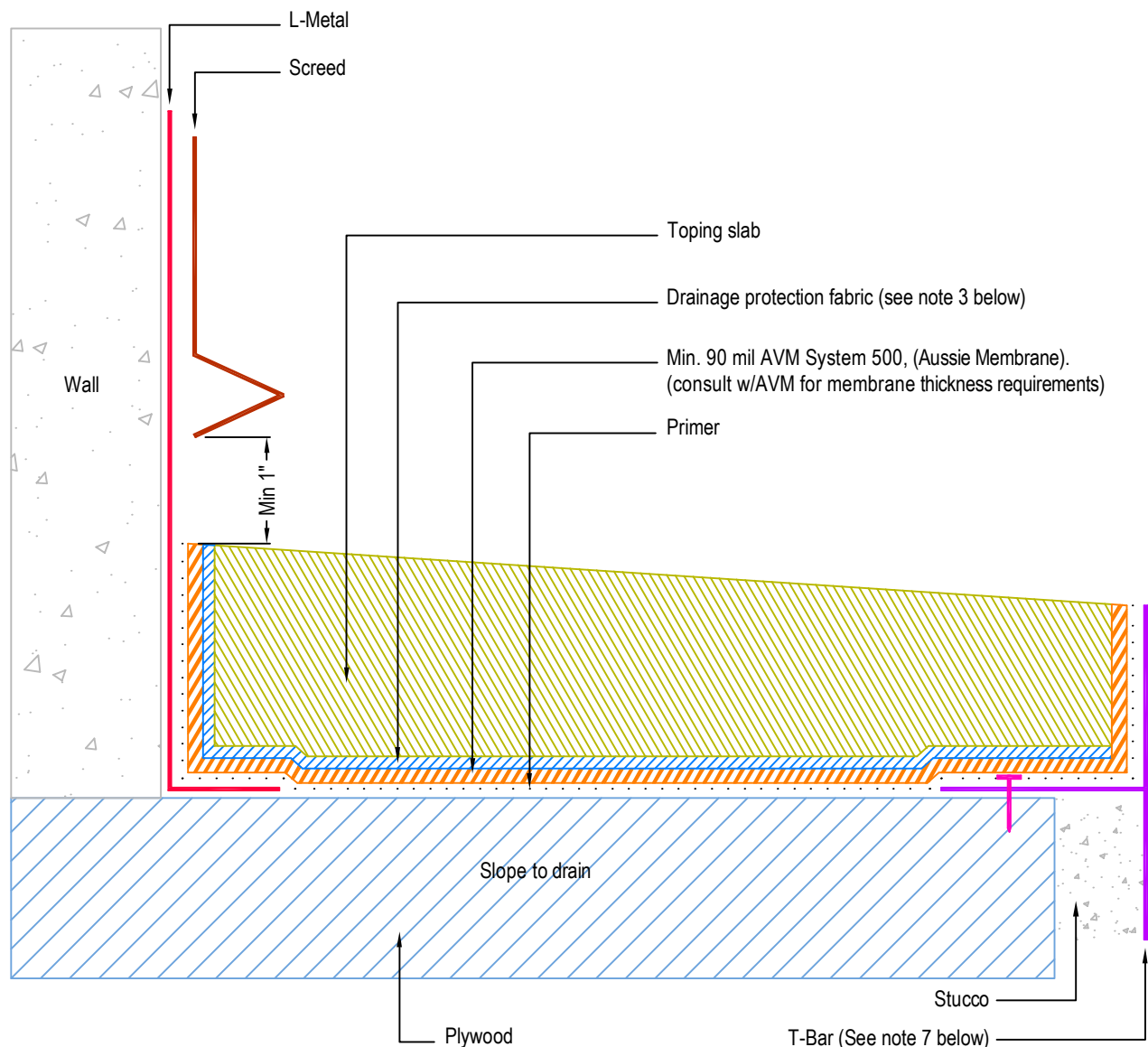
888.414.1041 818.888.0050  
www.avmindustries.com

FILE NAME: 0500-2522-P-Topping-Slab-On-Plywood-MD-CS

Revision Date: 07/14/2014  
Protected by Copyright © AVM Industries, Inc.

DETAIL # :  
AVM-500-2542-P  
AVM System 500  
Aussie Membrane  
VIEW TYPE:  
Cut Sheet

# Topping Slab on Plywood Substrate over AVM System 500 Aussie Membrane with Drainage Fabric, Fluid Applied Waterproofing (Light Duty)



## Notes:

1. Aussie Membrane 500 is a water-based bitumen (roller or brushed applied) for below-grade, between-slab, planters, roof-gardens and similar type waterproofing.
2. Contact AVM if no drain board or protection board is specified
3. For drainage/protection - use AVM Drainage & Protection Fabric DPF-16.
4. Reinforce the Aussie Membrane with AVM Mat 800 at all plywood joints, corners, metal transitions, penetrations, etc.
5. This assembly is for pedestrian traffic use only.
6. Plywood substrates must be sloped to drains and/or edges before membrane installation. (Min 1/4" per foot)
7. If water is to drain over the edge, then edge metals MUST have sufficient weep holes (at least every 6") and must be strong enough (thick enough) to act as a concrete form.
8. When drainage is over the edges, edge assemblies must allow for proper water evacuation. (None should trap water) Consult AVM for details.

AVM Industries, Inc.  
8245 Remmet Ave, Canoga Park, CA 91304

Quality Waterproofing Products

888.414.1041 818.888.0050  
www.avmindustries.com

FILE NAME: 0500-2542-P-Topping-Slab-On-Plywood-LD-CS

Revision Date: 07/14/2014  
Protected by Copyright © AVM Industries, Inc.

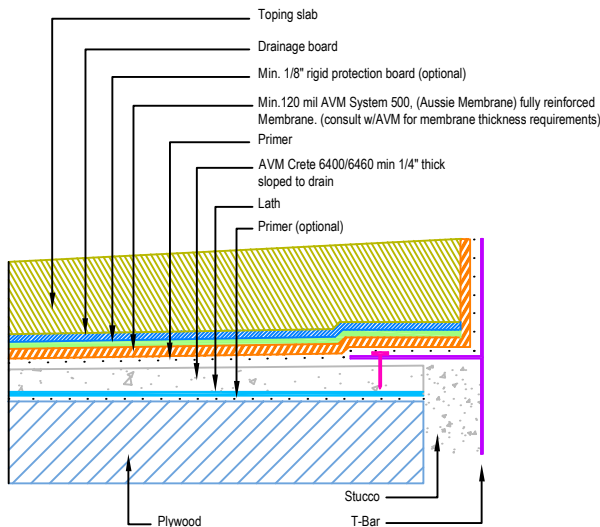
DETAIL # :  
AVM-500-2572-P  
AVM System 500  
Aussie Membrane  
VIEW TYPE:  
Cut Sheet

# Other Edge and Drain Details

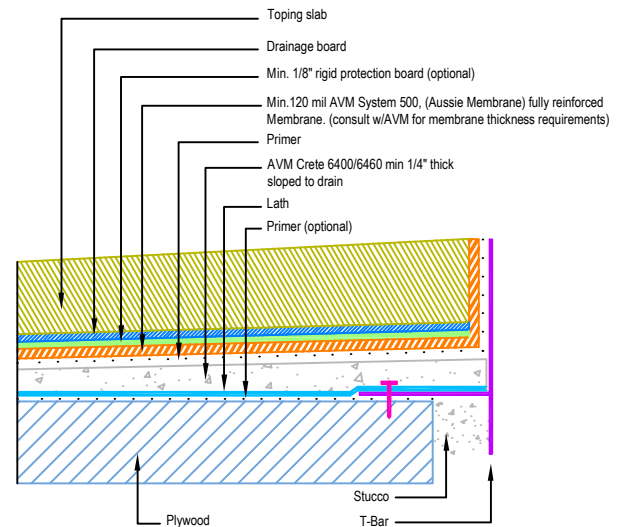
## Topping Slabs Waterproofing on Plywood Substrates

### AVM System 500 Aussie Membrane

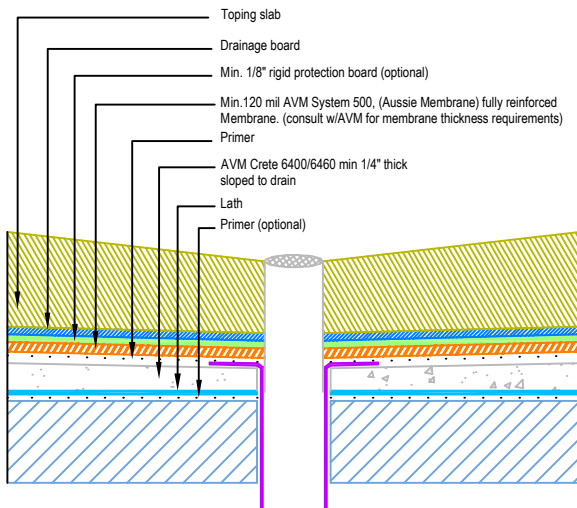
#### Fluid Applied Waterproofing (Heavy Duty)



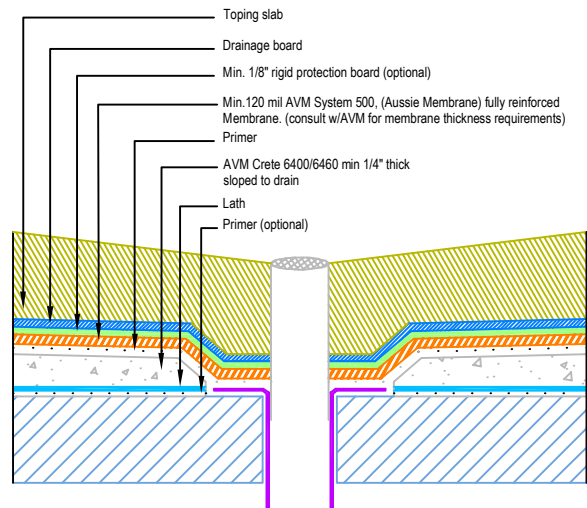
Slope Away from Edge Detail  
Concrete Under Metals



Slope Away from Edge Detail  
Concrete Over Metals



Drain Flange Sitting on  
Crete 6400/6460



Drain Flange Sitting on  
Plywood Substrate

#### Notes:

1. See drawing and notes on detail number AVM-500-2502-P for more information.
2. If water is to drain away from the edge into area floor drains, then edge metals do not require weep holes.
3. Reinforce the Aussie Membrane with AVM Mat 800 at all corners, metal transitions, penetrations, gaps, drains, etc.

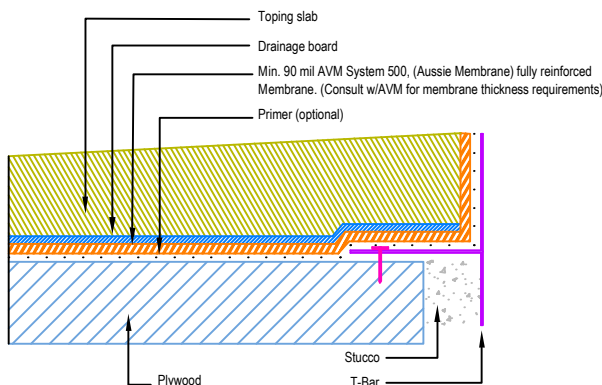
DETAIL # :  
AVM-500-2574-P  
AVM System 500  
Aussie Membrane  
VIEW TYPE:  
Cut Sheet

# Other Edge and Drain Details

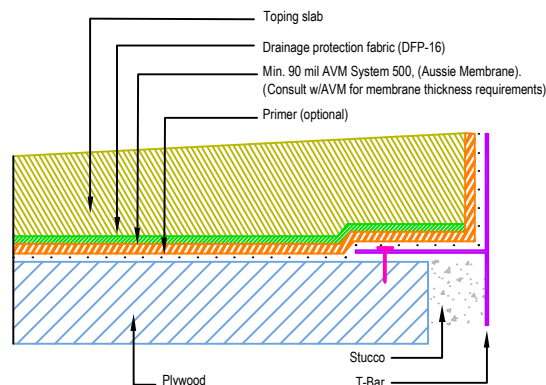
## Topping Slabs Waterproofing on Plywood Substrates

### AVM System 500 Aussie Membrane

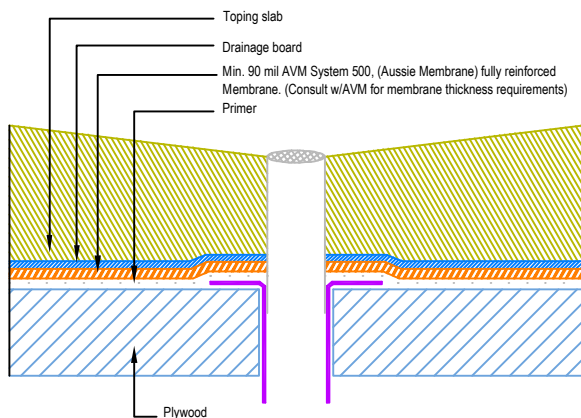
#### Fluid Applied Waterproofing (Medium and Light Duty)



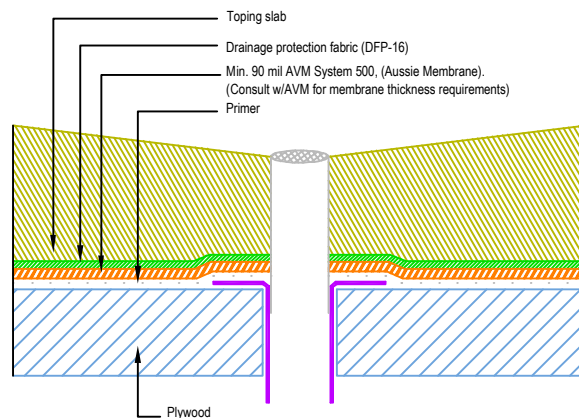
Slope Away from Edge Detail  
Medium Duty



Slope Away from Edge Detail  
Light Duty



Drain Flange Sitting on Plywood  
Medium Duty



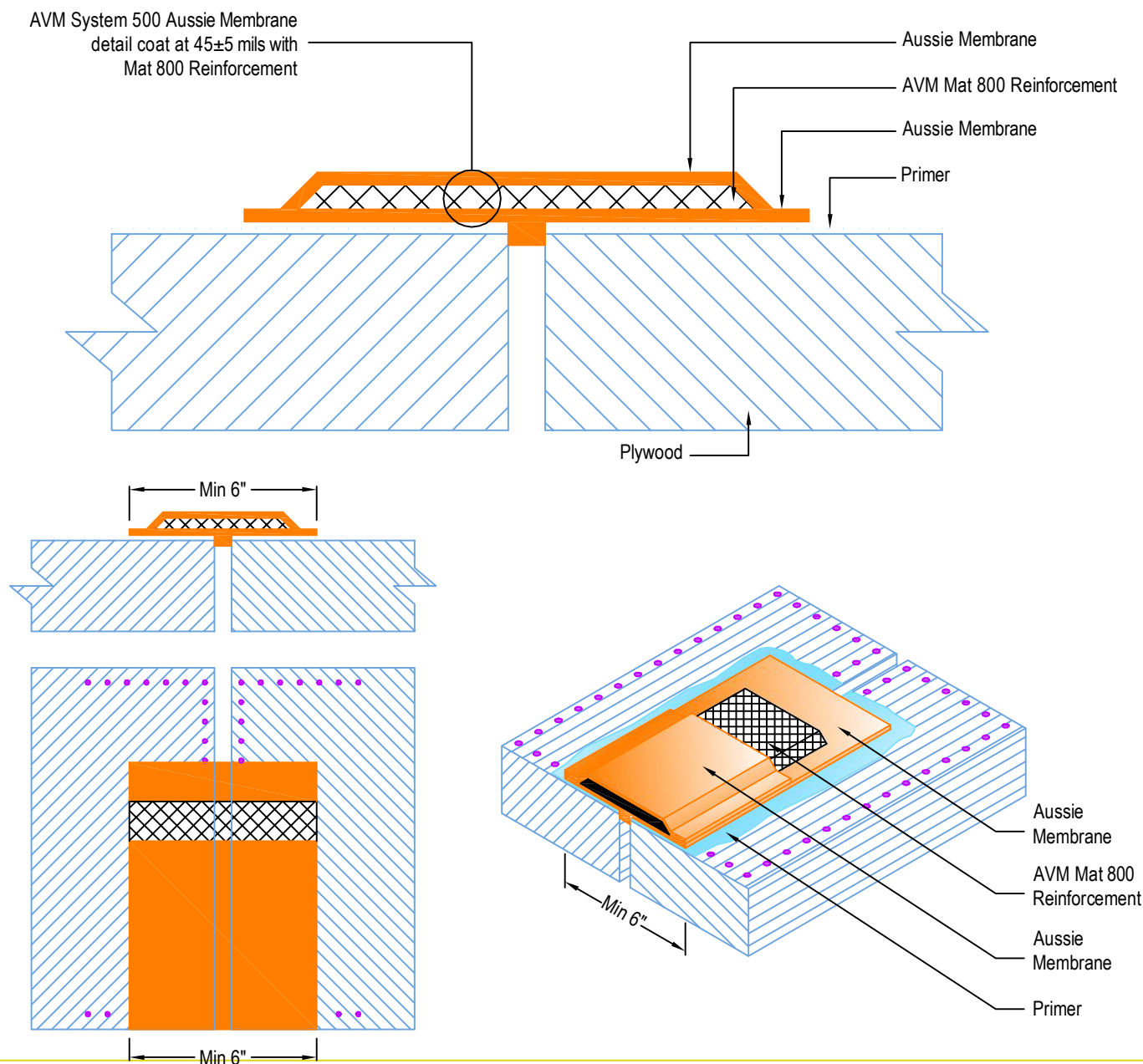
Drain Flange Sitting on Plywood  
Light Duty

#### Notes:

1. See drawing and notes on detail number AVM-500-2522-P for more information on medium duty applications.
2. See drawing and notes on detail number AVM-500-2542-P for more information on light duty applications.
3. If water is to drain away from the edge into area floor drains, then edge metals do not require weep holes.
4. Reinforce the Aussie Membrane with AVM Mat 800 at all corners, metal transitions, penetrations, gaps, drains, etc.

DETAIL # :  
AVM-500-2580-P  
AVM System 500  
Aussie Membrane  
VIEW TYPE:  
Cut Sheet

# Plywood Joint Detail for Topping Slabs Waterproofing on Plywood Substrates AVM System 500 Aussie Membrane Fluid Applied Waterproofing



## Notes:

1. This detail may not be applicable or needed if installing metal lath and AVM Crete 6400 over the plywood substrates before installing the Aussie Membrane. (See Detail # AVM-500-2502-P)
2. Aussie Membrane 500 is a Water-Based Bitumen (Roller or Brush Applied) for Below-Grade, Between-Slab, Planters, Roof-Gardens and similar type waterproofing.
3. For proper membrane thickness and drainage / protection requirements, refer to other "Topping Slab on Plywood" Details.
4. Make sure all nails are flush with the plywood surface or slightly sunken in below it. (Nails protruding above the plywood surface may puncture the membrane)
5. Remove/grind/repair as necessary any other protrusions, sharp edges, etc that may puncture or damage the membrane.
6. Reinforce the Aussie Membrane with AVM Mat 800 as shown at all plywood joints, flashings, penetrations, etc.
7. If extra protection is needed, use double reinforcement. (two layers of Mat 800 reinforcing fabric)

AVM Industries, Inc.  
8245 Remmet Ave, Canoga Park, CA 91304

Quality Waterproofing Products

888.414.1041 818.888.0050  
www.avmindustries.com

FILE NAME: 0500-2580-P-Plywood-Joints-Topping-Slab-On-Plywood-CS

Revision 07/07/2014  
Protected by Copyright © AVM Industries, Inc.

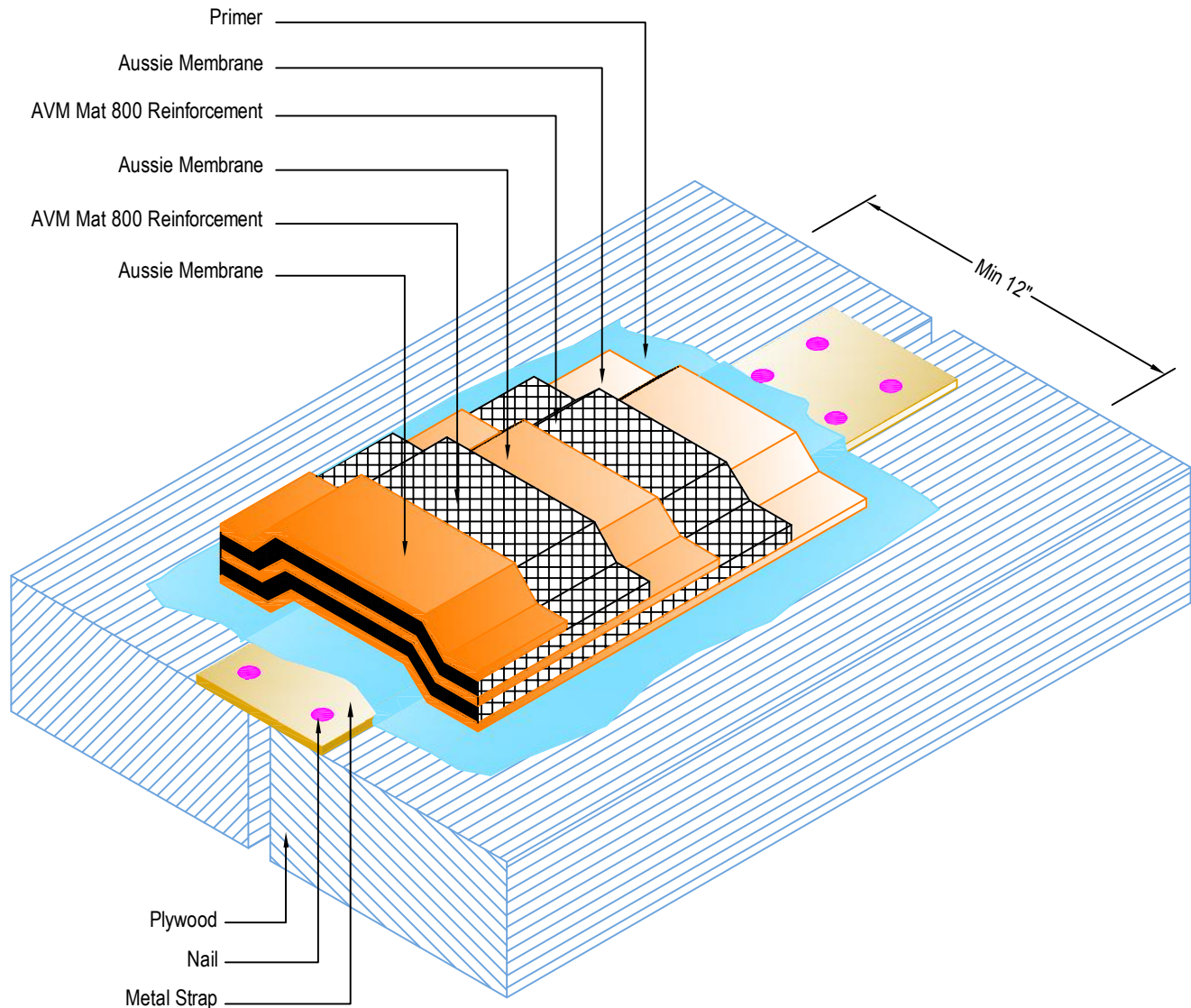


DETAIL # :  
AVM-500-2582-P

AVM System 500  
Aussie Membrane

VIEW TYPE:  
Cut Sheet

# Metal Straps at Plywood Joints Detail for Topping Slabs Waterproofing on Plywood Substrates **AVM System 500 Aussie Membrane** Fluid Applied Waterproofing



## Notes:

1. This detail may not be applicable or needed if installing metal lath and AVM Crete 6400 over the plywood substrates before installing the Aussie Membrane. (See Detail # AVM-500-2502-P)
2. Aussie Membrane 500 is a Water-Based Bitumen (Roller or Brush Applied) for Below-Grade, Between-Slab, Planters, Roof-Gardens and similar type Waterproofing.
3. For proper membrane thickness and drainage / protection requirements, refer to other "Topping Slab on Plywood" Details.
4. Metal straps must be protected by 'Double Fabric'.
5. Make sure all nails are flush with the plywood surface or slightly sunken in below it. (Nails protruding above the plywood surface may puncture the membrane)
6. Remove/grind/repair as necessary any other protrusions, sharp edges, etc that may puncture or damage the membrane.
7. After priming the metal straps and surrounding plywood surfaces, apply a liberal coat of the Aussie Membrane before installing the first layer of fabric to ensure the strap edges and nail heads will not cut into or damage the fabric.

AVM Industries, Inc.  
8245 Remmet Ave, Canoga Park, CA 91304

Quality Waterproofing Products

888.414.1041 818.888.0050  
www.avmindustries.com

FILE NAME: 0500-2582-P-Plywood-Joints-Metal-Straps-Topping-Slab-On-Plywood-CS

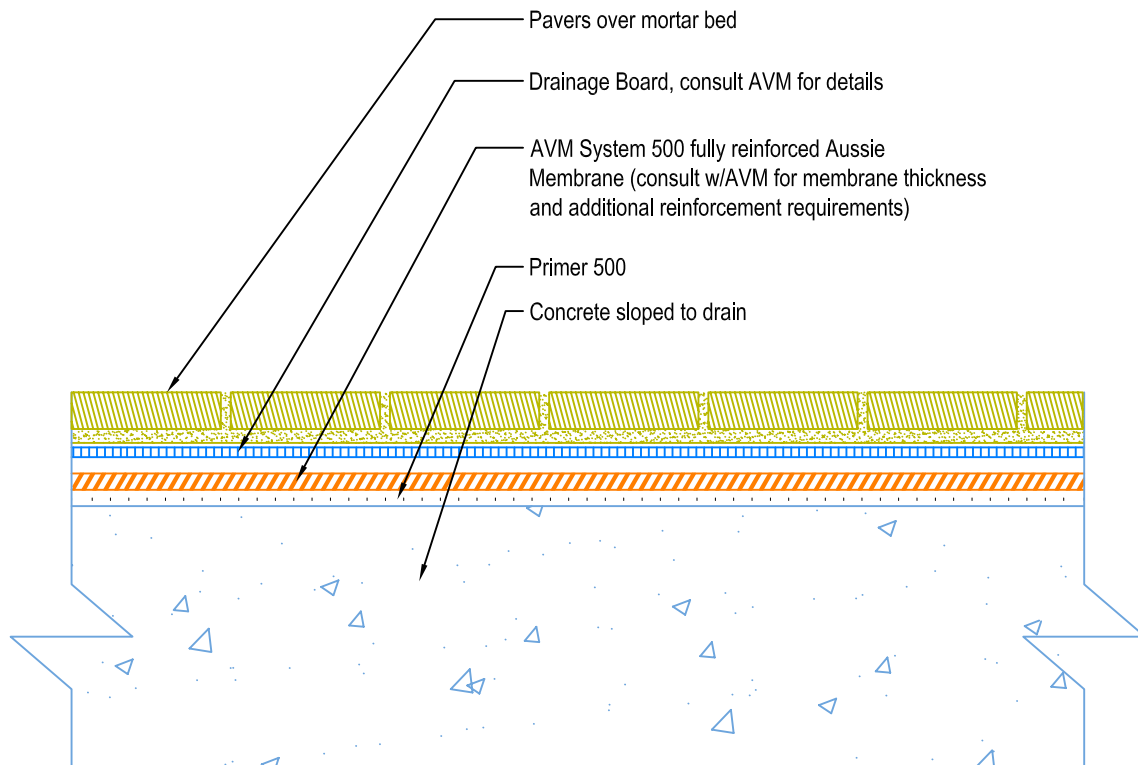
Revision 09/10/2014  
Protected by Copyright © AVM Industries, Inc.

DETAIL # :  
AVM-500-3002-C

AVM System 500  
Aussie Membrane

VIEW TYPE:  
Cut Sheet

# Pavers on Concrete Substrate over AVM System 500 Aussie Membrane Fluid Applied Waterproofing



## Notes:

1. Aussie Membrane 500 is a water-based bitumen (roller or brushed applied) for below-grade, between-slab, planters, roof-gardens and similar type waterproofing
2. For proper membrane thickness and appropriate protection and drainage, refer to AVM System 500, Aussie Membrane's "min. thickness table"
3. Contact AVM if no drain board or protection board is specified

AVM Industries, Inc.  
8245 Remmet Ave, Canoga Park, CA 91304

Quality Waterproofing Products

888.414.1041 818.888.0050  
[www.avmindustries.com](http://www.avmindustries.com)

FILE NAME: 0500-3002-C-Pavers-On-Concrete-CS

Protected by Copyright © AVM Industries, Inc.

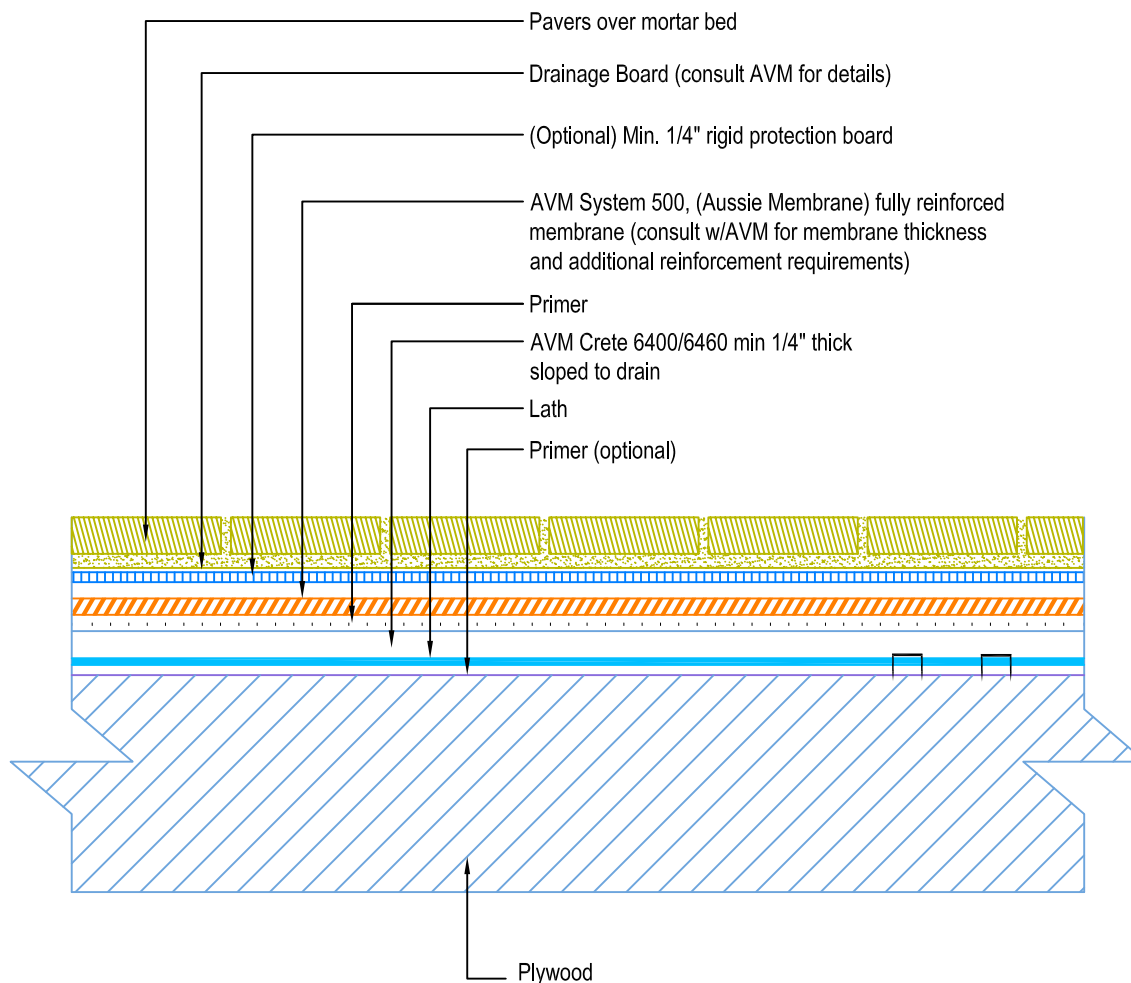
Revision Date: 02/03/2012

DETAIL # :  
AVM-500-3502-P

AVM System 500  
Aussie Membrane

VIEW TYPE:  
Cut Sheet

# Pavers on Plywood Substrate over AVM System 500 Aussie Membrane Fluid Applied Waterproofing



## Notes:

1. Aussie Membrane 500 is a water-based bitumen (roller or brushed applied) for below-grade, between-slab, planters, roof-gardens and similar type waterproofing
2. For proper membrane thickness and appropriate protection and drainage, refer to AVM System 500, Aussie Membrane's "min. thickness table"
3. Contact AVM if no drain board or protection board is specified
4. Crete 6400/6460. Refer to the Crete 6400 or Crete 6460 Spec Sheets or Installation Instructions for more information.

DETAIL # :  
AVM-500-6002-C

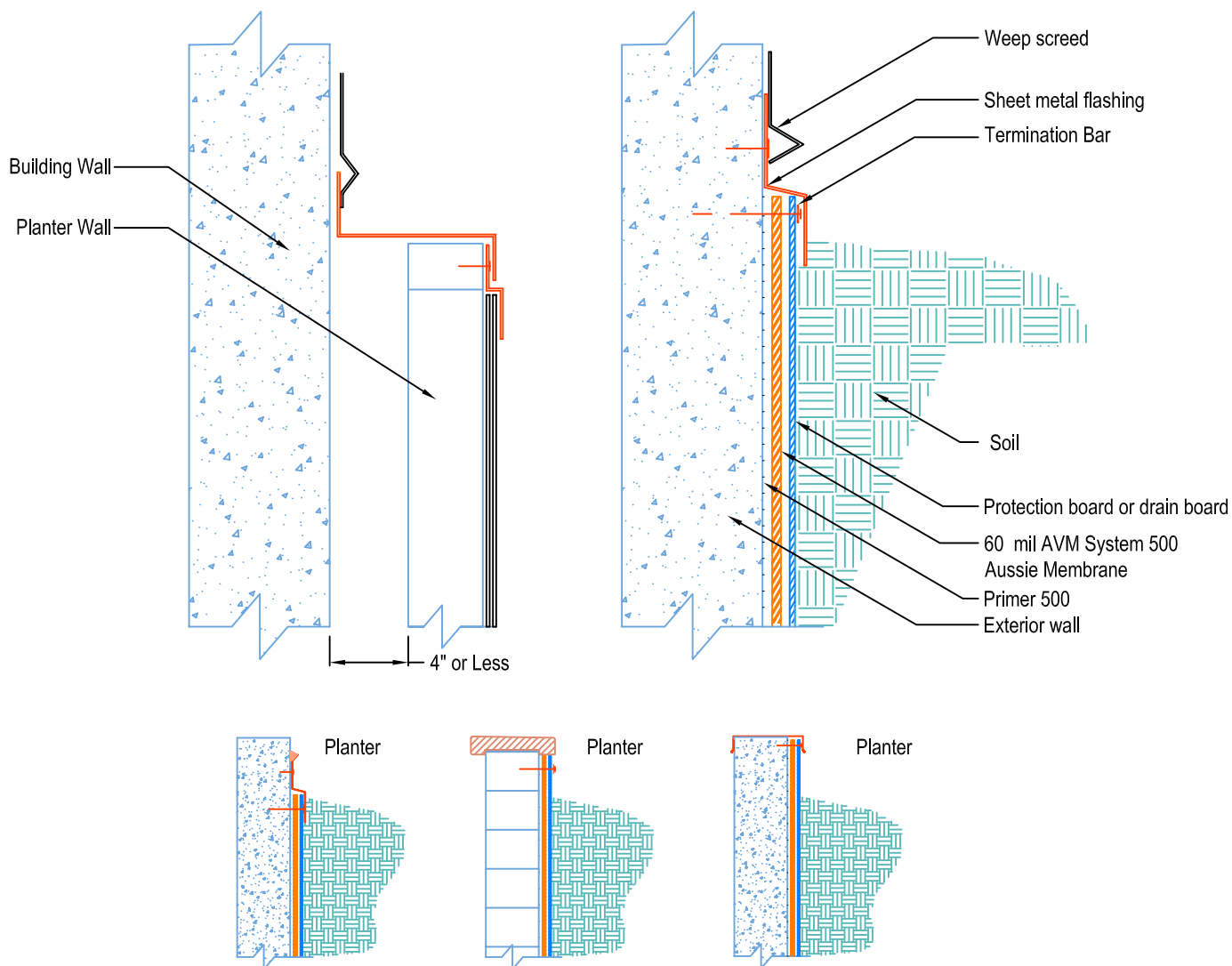
AVM System 500  
Aussie Membrane

VIEW TYPE:  
Cut Sheet

# Terminations

## AVM System 500 Aussie Membrane

### Fluid Applied Waterproofing



#### Notes:

1. Aussie Membrane 500 is a water-based bitumen (roller or brushed applied) for below-grade, between-slab, planters, roof-gardens and similar type waterproofing
2. For proper membrane thickness and appropriate protection and drainage, refer to AVM System 500, Aussie Membrane's "min. thickness table"
3. Contact AVM if no drain board or protection board is specified.

DETAIL # :  
AVM-500-6004-C

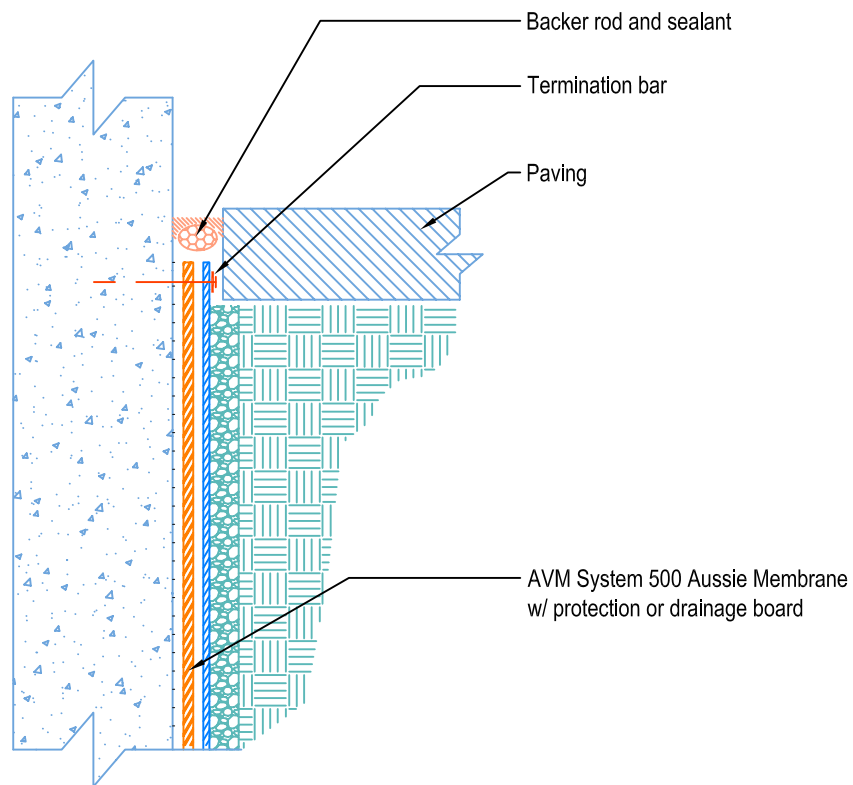
AVM System 500  
Aussie Membrane

VIEW TYPE:  
Cut Sheet

# Terminations at Sidewalks on Grade

## AVM System 500 Aussie Membrane

### Fluid Applied Waterproofing



#### Notes:

1. Aussie Membrane 500 is a water-based bitumen (roller or brushed applied) for below-grade, between-slab, planters, roof-gardens and similar type waterproofing
2. For proper membrane thickness and appropriate protection and drainage, refer to AVM System 500, Aussie Membrane's "min. thickness table"
3. Contact AVM if no drain board or protection board is specified.

AVM Industries, Inc.  
8245 Remmet Ave, Canoga Park, CA 91304

Quality Waterproofing Products

888.414.1041 818.888.0050  
[www.avmindustries.com](http://www.avmindustries.com)

FILE NAME: 0500-6004-C-Termination-Side-Walk-CS

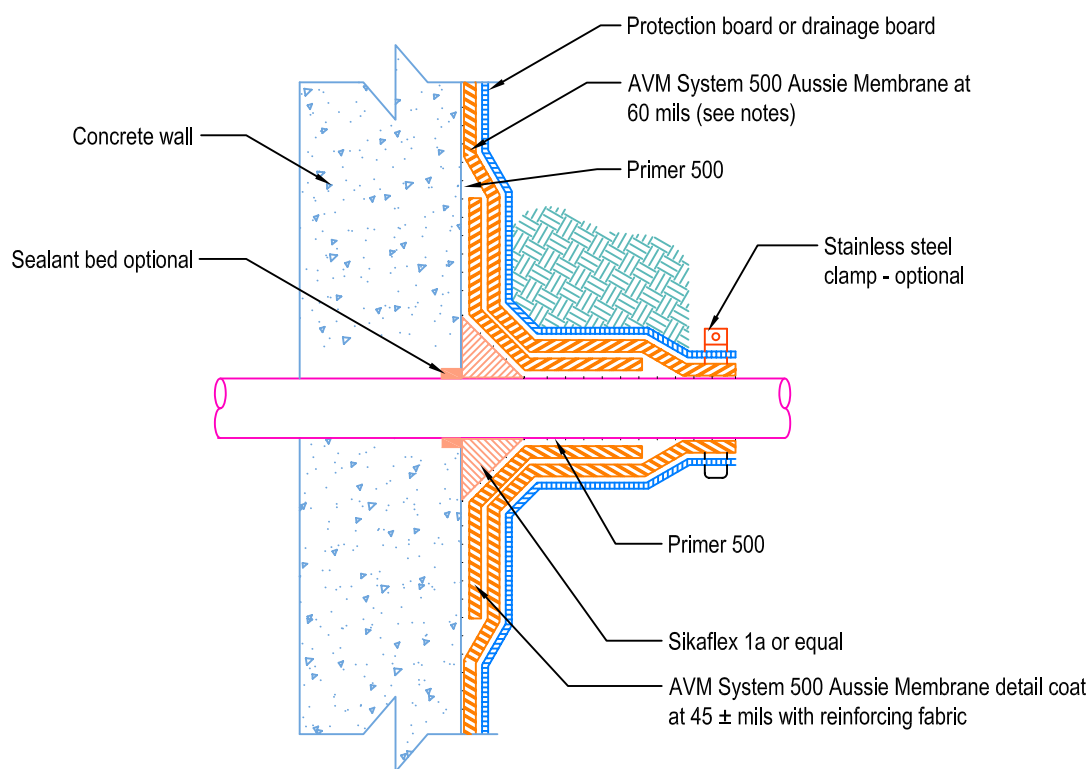
Protected by Copyright © AVM Industries, Inc.

Revision Date: 10/04/2011



DETAIL # :  
AVM-500-6502-C  
AVM System 500  
Aussie Membrane  
VIEW TYPE:  
Cut Sheet

# Pipe Penetration Thru Wall (Option 1) AVM System 500 Aussie Membrane Fluid Applied Waterproofing



## Notes:

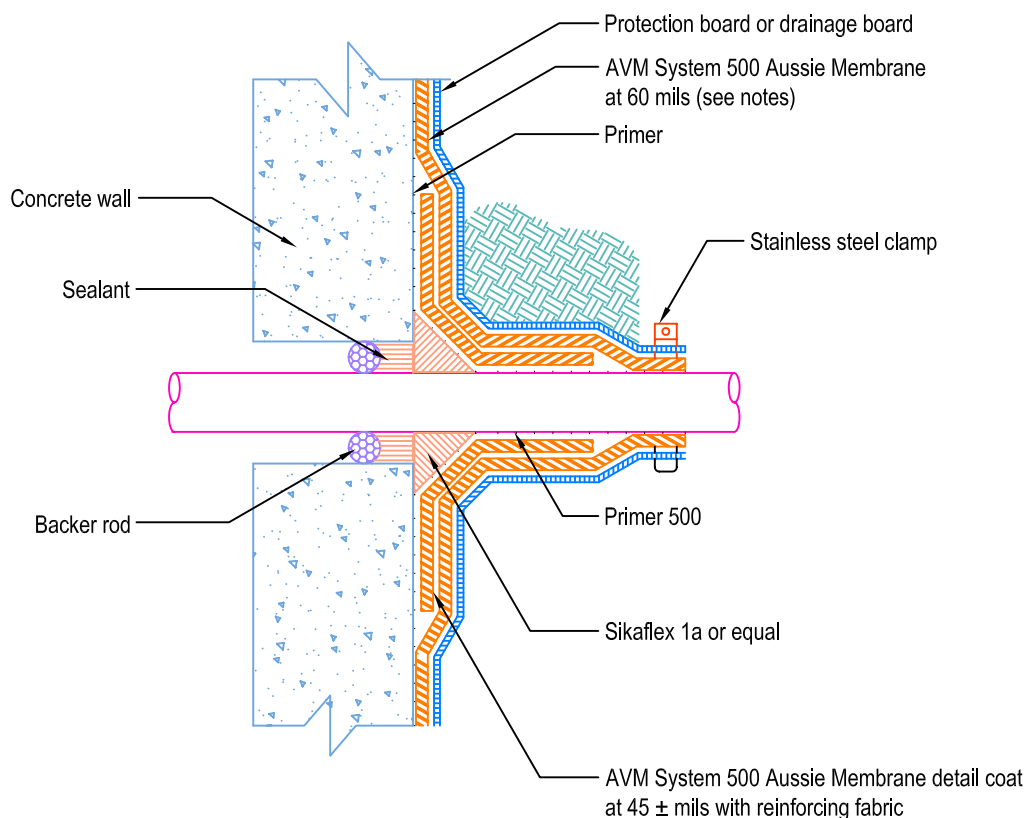
1. Aussie Membrane 500 is a water-based bitumen (roller or brushed applied) for below-grade, between-slab, planters, roof-gardens and similar type waterproofing.
2. For proper membrane thickness and appropriate protection and drainage, refer to AVM System 500, Aussie Membrane's "min. thickness table"
3. Contact AVM if no drain board or protection board is specified.
4. With sealant around pipe.

DETAIL # :  
AVM-500-6504-C

AVM System 500  
Aussie Membrane

VIEW TYPE:  
Cut Sheet

# Pipe Penetration Thru Wall (Option 2) AVM System 500 Aussie Membrane Fluid Applied Waterproofing

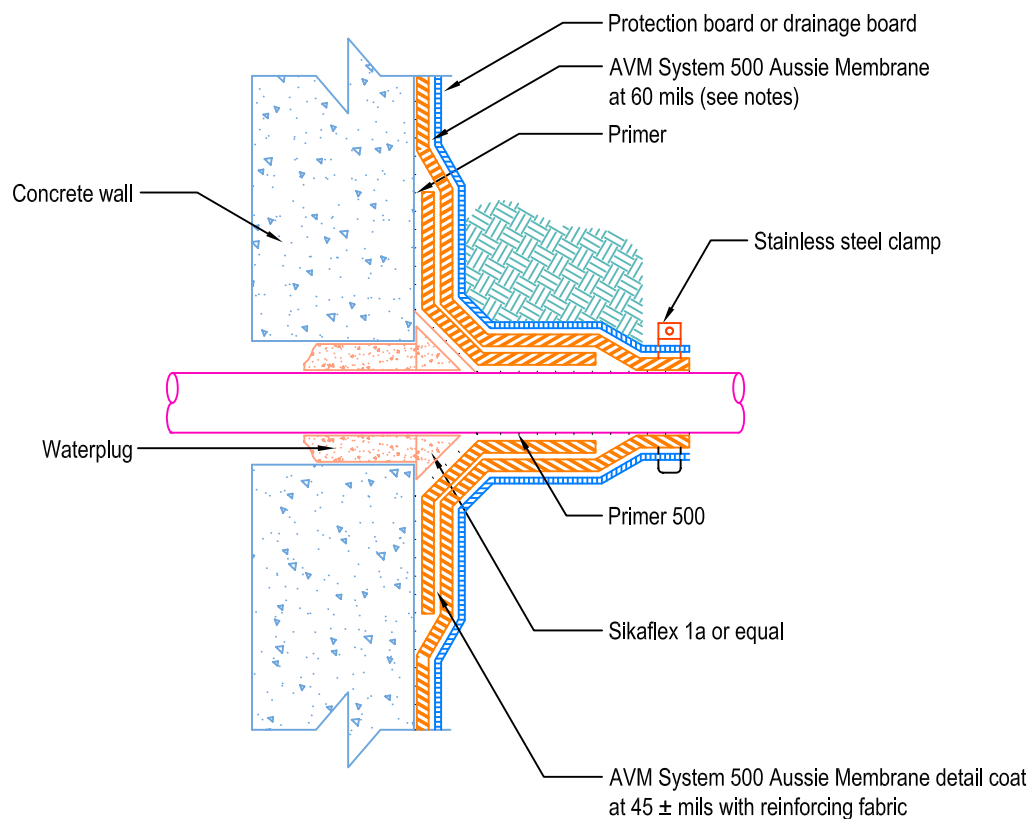


## Notes:

1. Aussie Membrane 500 is a water-based bitumen (roller or brushed applied) for below-grade, between-slab, planters, roof-gardens and similar type waterproofing.
2. For proper membrane thickness and appropriate protection and drainage, refer to AVM System 500, Aussie Membrane's "min. thickness table".
3. Contact AVM if no drain board or protection board is specified.
4. With backer rod and sealant around pipe.

DETAIL # :  
AVM-500-6506-C  
AVM System 500  
Aussie Membrane  
VIEW TYPE:  
Cut Sheet

# Pipe Penetration Thru Wall (Option 3) AVM System 500 Aussie Membrane Fluid Applied Waterproofing



## Notes:

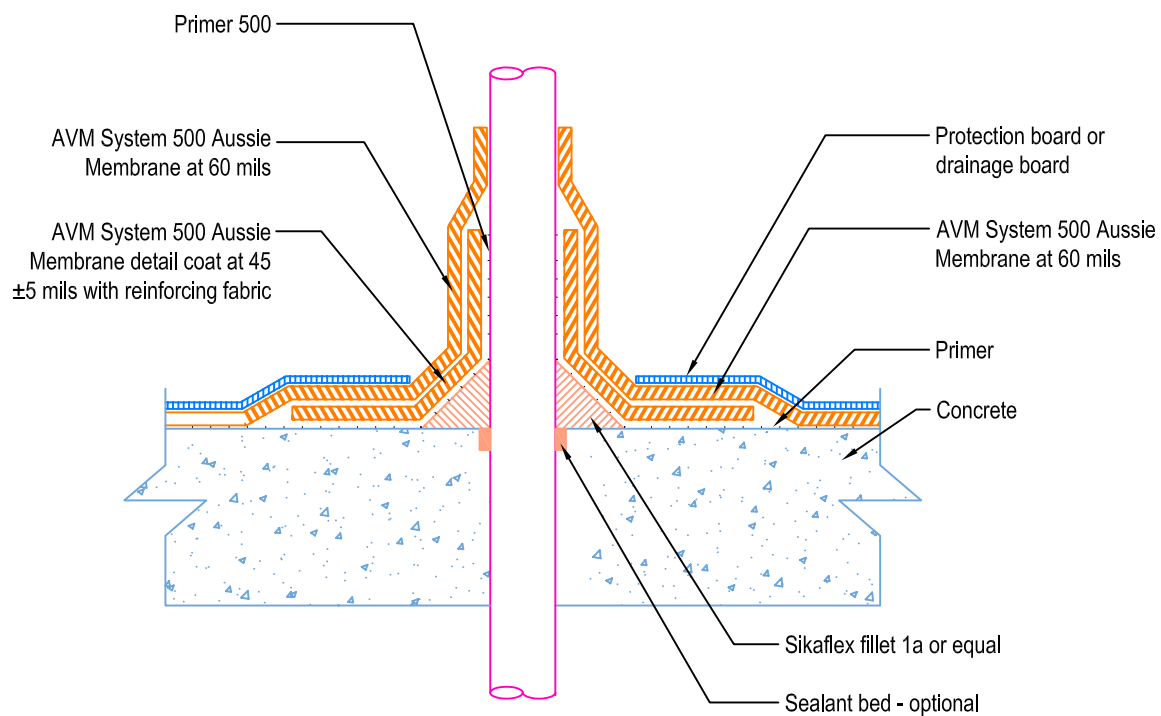
1. Aussie Membrane 500 is a water-based bitumen (roller or brushed applied) for below-grade, between-slab, planters, roof-gardens and similar type waterproofing
2. For proper membrane thickness and appropriate protection and drainage, refer to AVM System 500, Aussie Membrane's "min. thickness table"
3. Contact AVM if no drain board or protection board is specified
4. With water plug around pipe.

DETAIL # :  
AVM-500-6702-C

AVM System 500  
Aussie Membrane

VIEW TYPE:  
Cut Sheet

Pipe Penetration Thru Slab (Option 1)  
**AVM System 500 Aussie Membrane**  
Fluid Applied Waterproofing



Notes:

1. Aussie Membrane 500 is a water-based bitumen (roller or brushed applied) for below-grade, between-slab, planters, roof-gardens and similar type waterproofing.
2. For proper membrane thickness and appropriate protection and drainage, refer to AVM System 500, Aussie Membrane's "min. thickness table".
3. Contact AVM if no drain board or protection board is specified.
4. With sealant around pipe.

AVM Industries, Inc.  
8245 Remmet Ave, Canoga Park, CA 91304

Quality Waterproofing Products

888.414.1041 818.888.0050  
www.avmindustries.com

FILE NAME: 0500-6702-C-Pipe-Thru-Slab-01-CS

Protected by Copyright © AVM Industries, Inc.

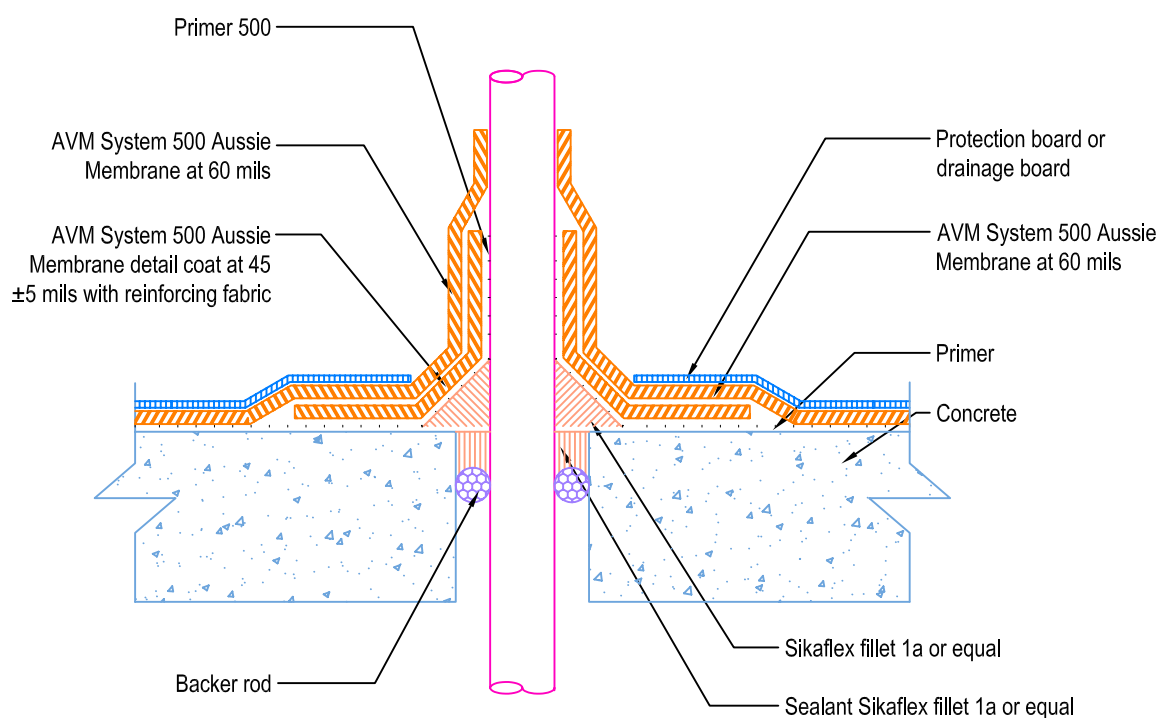
Revision Date: 10/04/2011

DETAIL # :  
AVM-500-6704-C

AVM System 500  
Aussie Membrane

VIEW TYPE:  
Cut Sheet

Pipe Penetration Thru Slab (Option 2)  
**AVM System 500 Aussie Membrane**  
Fluid Applied Waterproofing



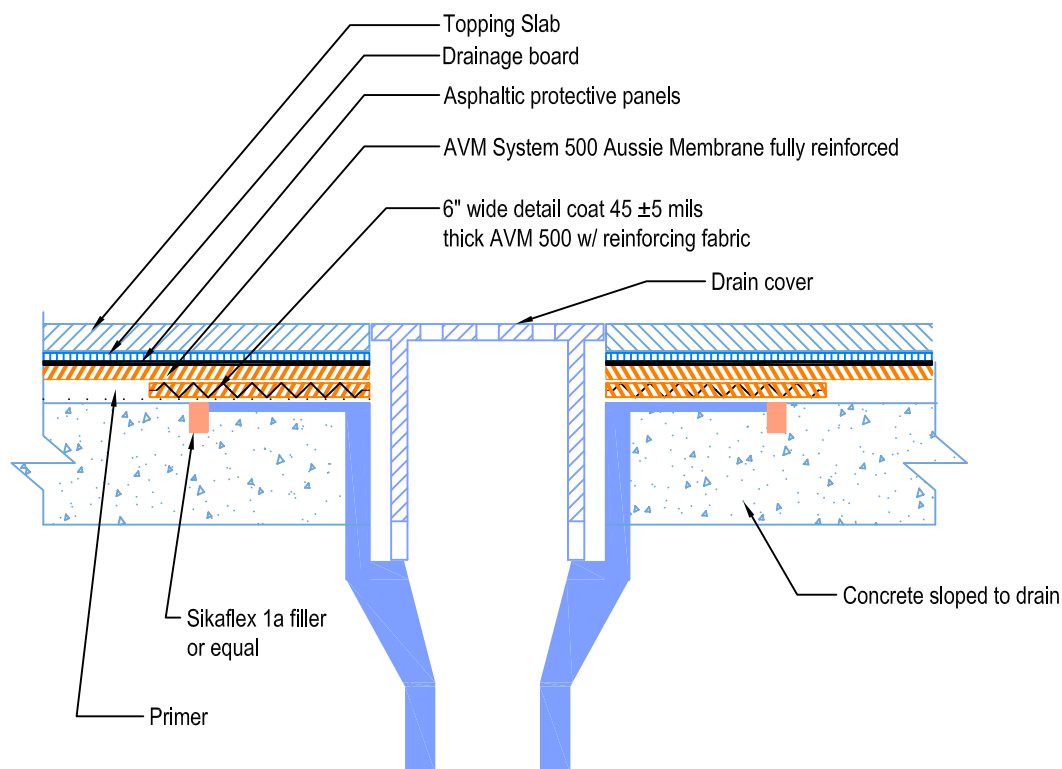
Notes:

1. Aussie Membrane 500 is a water-based bitumen (roller or brushed applied) for below-grade, between-slab, planters, roof-gardens and similar type waterproofing
2. For proper membrane thickness and appropriate protection and drainage, refer to AVM System 500, Aussie Membrane's "min. thickness table"
3. Contact AVM if no drain board or protection board is specified
4. With backer rod and sealant around pipe.

DETAIL # :  
AVM-500-7002-C  
AVM System 500  
Aussie Membrane  
VIEW TYPE:  
Cut Sheet

## Area Drain Detail

### AVM System 500 Aussie Membrane Fluid Applied Waterproofing



#### Notes:

1. Aussie Membrane 500 is a water-based bitumen (roller or brushed applied) for below-grade, between-slab, planters, roof-gardens and similar type waterproofing.
2. For proper membrane thickness and appropriate protection and drainage, refer to AVM System 500, Aussie Membrane's "min. thickness table".
3. Contact AVM if no drain board or protection board is specified.
4. Topping slabs for pedestrian traffic use AVM Drain Board 6000.
5. Topping slabs for vehicular traffic use AVM Drain Board 9000.

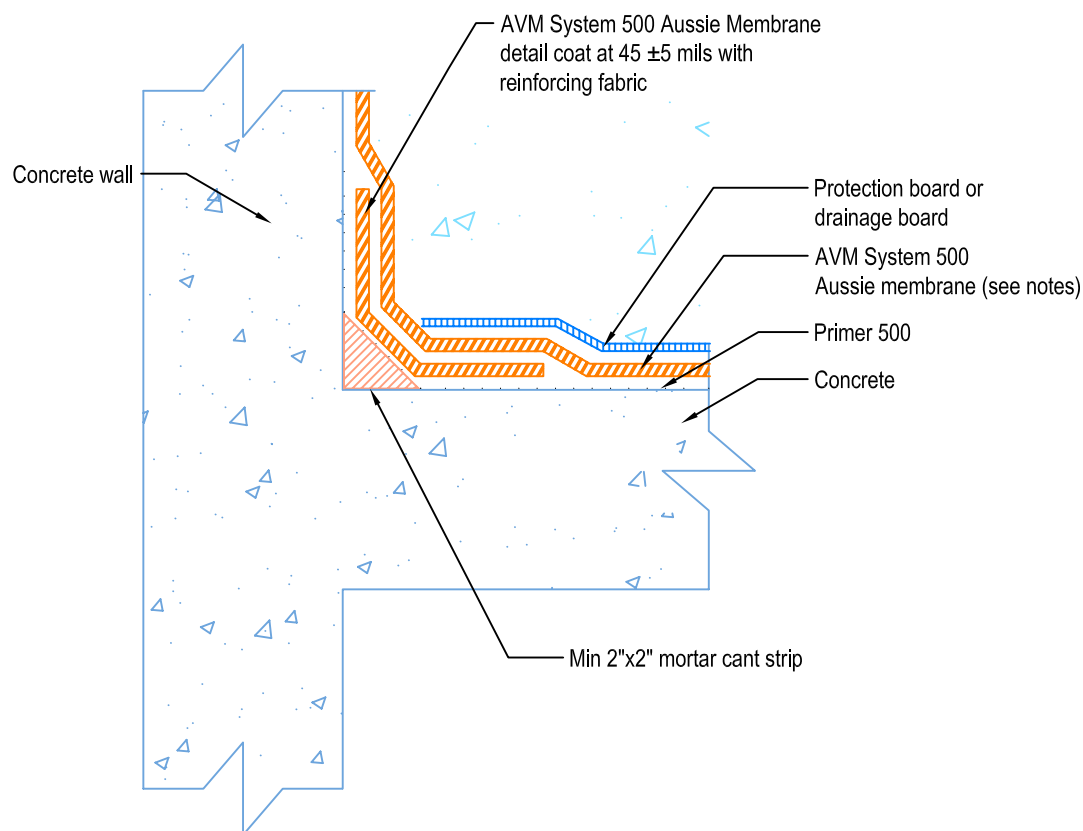


DETAIL # :  
AVM-500-7502-C

AVM System 500  
Aussie Membrane

VIEW TYPE:  
Cut Sheet

Transition Horizontal to Vertical  
Topping Slab or Pavers  
**AVM System 500 Aussie Membrane**  
Fluid Applied Waterproofing



Notes:

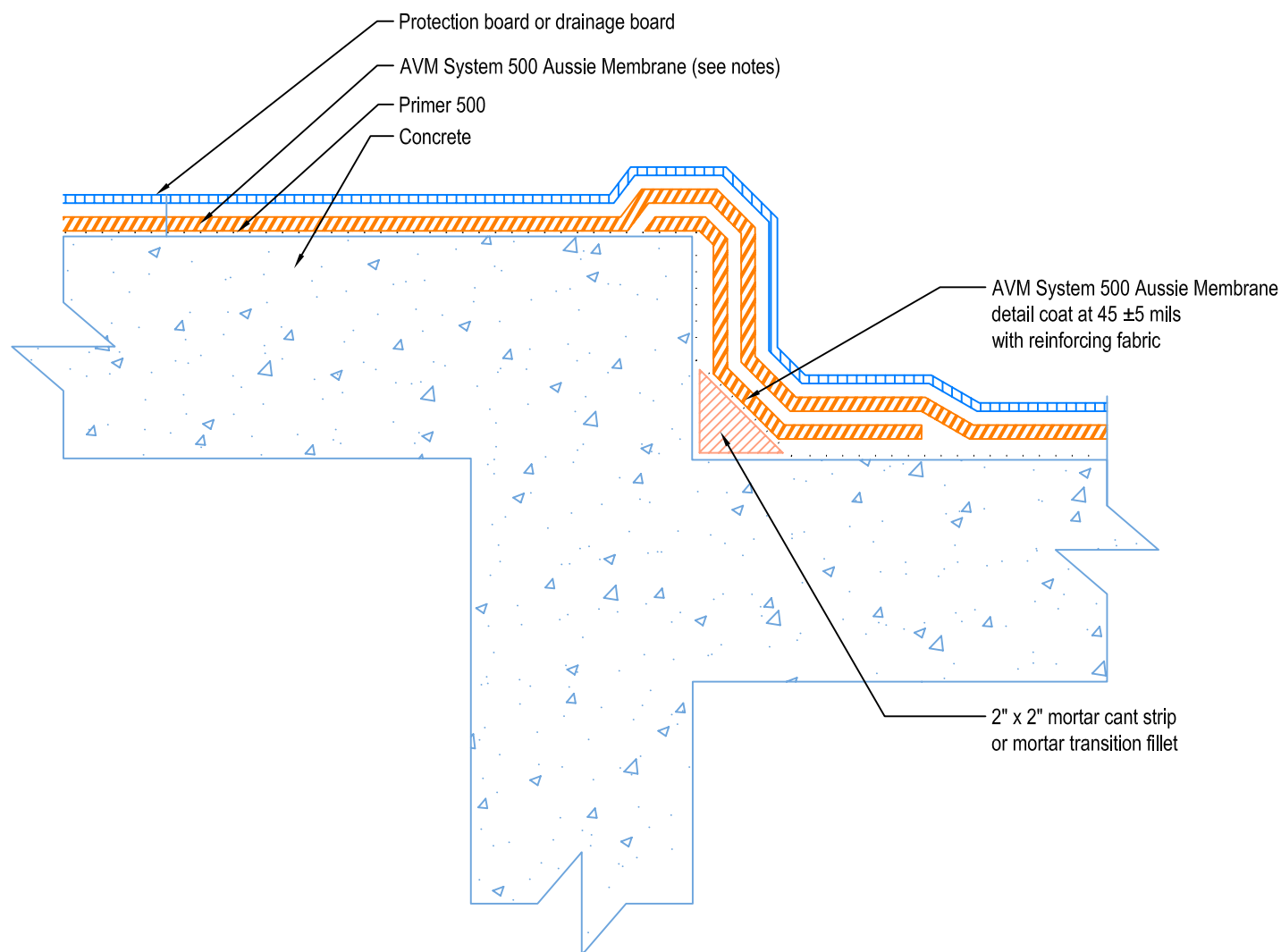
1. Aussie Membrane 500 is a water-based bitumen (roller or brushed applied) for below-grade, between-slab, planters, roof-gardens and similar type waterproofing.
2. For proper membrane thickness and appropriate protection and drainage, refer to AVM System 500, Aussie Membrane's "min. thickness table".
3. Contact AVM if no drain board or protection board is specified.

DETAIL # :  
AVM-500-7504-C

AVM System 500  
Aussie Membrane

VIEW TYPE:  
Cut Sheet

# Transition At Depressed Slab AVM System 500 Aussie Membrane Fluid Applied Waterproofing



## Notes:

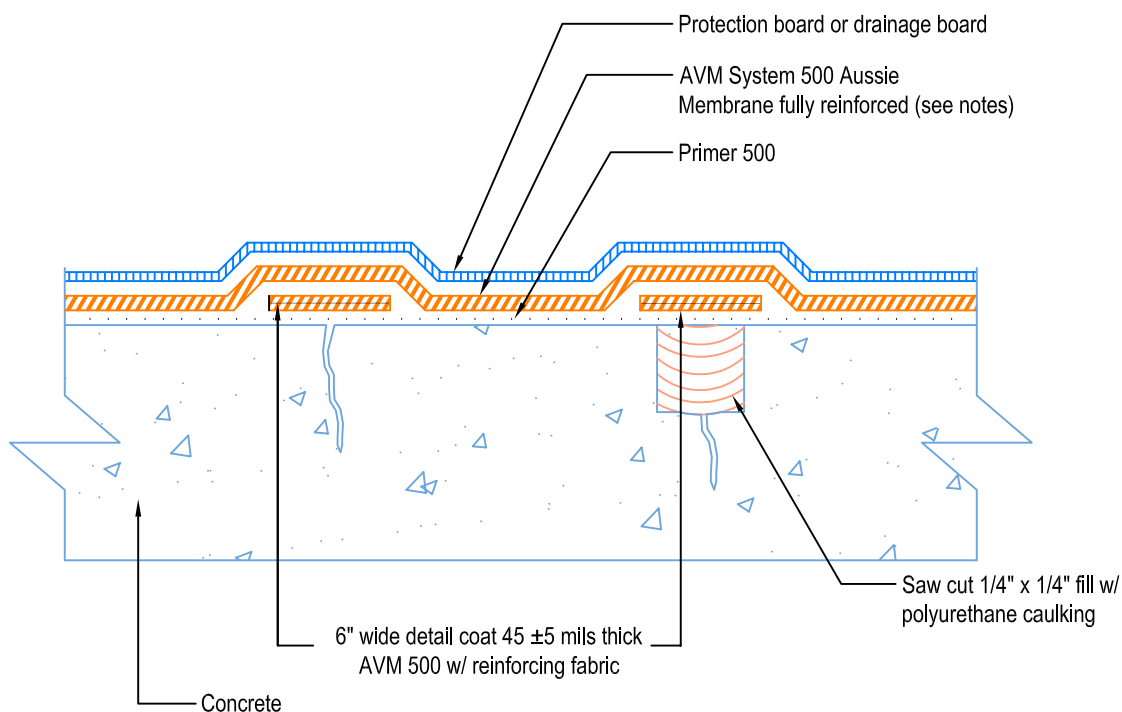
1. Aussie Membrane 500 is a water-based bitumen (roller or brushed applied) for below-grade, between-slab, planters, roof-gardens and similar type waterproofing.
2. For proper membrane thickness and appropriate protection and drainage, refer to AVM System 500, Aussie Membrane's "min. thickness table".
3. Contact AVM if no drain board or protection board is specified.

VIEW TYPE:  
Cut Sheet

## Crack Repair (Option 1)



Crack greater than 1/16" wide



1. Aussie Membrane 500 is a water-based bitumen (roller or brushed applied) for below-grade, between-slab, planters, roof-gardens and similar type waterproofing.
2. For proper membrane thickness and appropriate protection and drainage, refer to AVM System 500, Aussie Membrane's "min. thickness table".
3. Contact AVM if no drain board or protection board is specified.

Revision 10/04/2011

M

## SAFETY DATA SHEET

Aussie Membrane (AVM System 500 & 502)

Page 1 of 8

M

Date of issue: 09/12/2015

Date of revision: 09/12/2015

Version no.: 1

M

### SECTION 1: Identification of the substance/mixture and of the company/undertaking

M

#### **1.1 Product identifier**

Product name: Aussie Membrane

M

#### **1.2 Relevant identified uses of the substance or mixture and uses advised against**

Identified uses of the mixture Waterproofing underground structures. Waterproofing basements & cellars. Waterproofing wet duty rooms.

Protection and dump proofing of underground concrete elements.

Waterproofing covered roofs and verandas.

M

#### **1.3 Details of the supplier of the safety data sheet**

AVM Industries, Inc.

8245 Remmet Ave

Canoga Park, Ca 91304

(818) 888-0050

M

E-mail address of person responsible for this SDS:

[emergencies@avmindustries.com](mailto:emergencies@avmindustries.com)

#### **1.4 Emergency telephone number**

Emergency telephone number (with hours of operation):

8:00 AM – 5:00 PM 818-888-0050

After hours and weekends: (818) 424-0082 / (818) 456-9737

M

### SECTION 2: Hazards identification

M

#### **2.1 Classification of the substance or mixture**

M

Classification according to 29 CFR 1910.1200 (OSHA HCS): Not classified

M

Classification in accordance to Regulation (EC) No. 1272/2008 (CLP): Not classified

M

See section 16 for the full text of the H-statements declared above.

M

M

#### **2.2 Label elements**

M

Labelling according to 29 CFR 1910.1200 (OSHA HCS) Hazard pictogram(s): Not required

Signal word: Not required

Hazard statement(s): Not required

Precautionary Statement(s): Not required

M

M

Labelling in accordance with Regulation 1272/2008 (CLP) Hazard pictogram(s): Not required

Signal word: Not required

Hazard statement(s): Not required

Precautionary Statement(s): Not required

## SAFETY DATA SHEET

Aussie Membrane (AVM System 500 &amp; 502)

Page 2 of 8

M

### **2.3 Other hazard**

Not available

M

## **SECTION 3: Composition/information on ingredients**

M

### **3.1 Mixtures:**

M

Ingredient name	Identifiers	%	CLP Classification	OSHA HCS
Bitumen (Residues (petroleum), vaccum)	CAS number: 64741-56-6 EC number: 265-057-8	30-40	Not classified	<sup>M</sup> Not classified
<sup>M</sup> Polychlorobutadiene	CAS number: 9010-98-4 EC number: N/A	10-20	Not classified	<sup>M</sup> Not classified
Solvent naphtha (petroleum), heavy arom.	<sup>M</sup> CAS number: 64742-94-5 EC number: 265-198-5	<1	Asp. Tox.1 H304	<sup>M</sup> Asp. Tox.1 H304

See section 16 for the full text of the H-statements declared above.

M

**There are no additional ingredients present which, within the current knowledge of the supplier and in the concentrations applicable, are classified as hazardous to health or the environment and hence require reporting in this section.**

M

**Occupational exposure limits, if available, are listed in section 8.**

M

## **SECTION 4: First aid measures**

M

M

### **4.1 Description of first aid measures**

M

**Eyes contact:** In case of contact with eyes, rinse immediately with plenty of water for at least 15 minutes. Get medical attention.

M

**Skin contact:** Take off contaminated clothing and shoes immediately unless stuck to the skin. Wash off with soap and plenty of water for at least 10 minutes. Get medical attention.

M

**Inhalation:** Remove the victim from site of exposure to fresh air. If breathing is difficult, give oxygen. If not breathing give artificial respiration. Get medical attention.

M

**Ingestion:** **Do not induce vomiting.** If victim is conscious, wash mouth thoroughly with plenty of water. Never give anything by mouth to an unconscious person. Get medical attention.

M

### **4.2 Most important symptoms and effects, both acute and delayed**

See section 2.2 (Label elements) and/or section 11 (Toxicological information) for the most important known symptoms and effects.

M

### **4.3 Indication of any immediate medical attention and special treatment needed**

Not available

M

M

## **SECTION 5: Fire-fighting measures**

M

M

### **5.1 Extinguishing media**

Suitable: Foam, carbon dioxide, dry powder.

Not suitable: Water jet

M

### **5.2 Special hazards arising from the substance or mixture**

Hazardous combustion products: Hydrogen chloride, hydrogen sulfide, oxides of sulfur and calcium, irritating and toxic gases.

## SAFETY DATA SHEET

Aussie Membrane (AVM System 500 & 502)

Page 3 of 8

M

### **5.3 Advice for firefighters**

**Special protective equipment for fire fighters:** Fire fighters should wear full protective clothing and self-contained breathing apparatus in positive pressure mode.

Move containers from fire area if possible without risk.

Water spray may be used to keep fire exposed containers cool.

M

## **SECTION 6: Accidental release measures**

M

### **6.1 Personal precautions, protective equipment and emergency procedures**

Use personal protective equipment. Avoid breathing vapors, mist or gas. Ensure adequate ventilation. Ventilate area of spill. Keep away from sources of ignition.

M

### **6.2 Environmental precautions**

Prevent entry into waterways, sewers, basements or confined areas.

M

### **6.3 Methods and materials for containment and cleaning up**

Contain spillage, and then collect with non-combustible absorbent material, (e.g. sand, earth, diatomaceous earth, vermiculite) and place in container for disposal according to local / national regulations.

M

### **6.4 Reference to other sections**

See Section 1 for emergency contact information.

M

## **SECTION 7: Handling and storage**

M

### **7.1 Precautions for safe handling**

Avoid contact with skin and eyes. Avoid mechanical actions that can release respirable dust of crystalline silica. Wash thoroughly after handling. Handle in accordance with good industrial hygiene and safety practice. Keep away from sources of ignition.

M

Eating, drinking and smoking should be prohibited in areas where this material is handled, stored and processed. Workers should wash hands and face before eating, drinking and smoking. Remove contaminated clothing and protective equipment before entering eating areas. See also section 8 for additional information measures.

M

### **7.2 Conditions for safe storage, including any incompatibilities**

**Storage:** Keep containers tightly closed, in dry, cool and well ventilated place.

Protect from direct sunlight and high temperature. Do not store together with strong oxidizing agents, acids.

In tropical climates the product must be stored in an air-conditioned environment.

In cold climates the product must be stored in heated environment over 50°F (10°C). Do not freeze. Shelf life is 12 months when stored as above.

M

## **SECTION 8: Exposure control/personal protection**

M

M

### **8.1 Control parameters**

N/A

M

M

### **8.2 Exposure controls**

M

#### **Engineering measures**

Use process enclosures, local exhaust ventilation, or others engineering controls to keep airborne levels below recommend exposure limits. If user operations generate dust, fume or mist, use ventilation to keep exposure to airborne contaminants below the exposure limit.

Avoid mechanical actions that can release dust of crystalline silica.



## SAFETY DATA SHEET

Aussie Membrane (AVM System 500 & 502)

Page 4 of 8

M

M

### Person Protective measures

Respiratory protection: Mask and filter. Be sure to use an approved/certified equipment or equivalent equipment. Wear appropriate respirator when ventilation is inadequate.

Hand protection: Wear protective gloves to prevent skin exposure.

Eye protection: Wear protective safety glasses or goggles.

Skin protection: Wear appropriate long-sleeved clothing to minimize skin contact.

M

M

Environmental exposure controls: Emissions from ventilation or work process equipment should be checked to ensure they comply with the requirements of environmental protection legislation. In some cases, fume scrubbers, filters or engineering modifications to the process equipment will be necessary to reduce emissions to acceptable levels.

M

## **SECTION 9: Physical and chemical properties**

M

### **9.1 Information on basic physical and chemical properties**

Appearance: Brown paste

Odour: N/A

Odour threshold: N/A

pH: 8-11

Melting point/Freezing point: N/A

Initial boiling point/boiling range: N/A

Flash point: Non flammable

Evaporation rate: N/A

Flammability: Non flammable

Upper/lower flammability or explosive limits: N/A

Vapor pressure: Practically non-volatile

Vapor density: N/A Relative

Density: N/A Solubility(ies):

Insoluble in water

Partition coefficient Octanol/Water: N/A

Auto-ignition temperature: N/A

Decomposition temperature: 100°C

Viscosity: N/A

Explosive properties: N/A

Oxidizing properties: N/A

M

### **9.2 Other information**

Density at 25°C: 1.15 (±0.05) gr/cm<sup>3</sup>

M

## **SECTION 10: Stability and reactivity**

M

M

### **10.1 Reactivity**

Not available.

M

### **10.2 Chemical stability**

The product is stable under normal handling and storage conditions described in Section 7.

M

### **10.3 Possibility of hazardous reactions**

Hazardous reactions are not expected, under normal conditions of storage and use.

M

### **10.4 Conditions to avoid**

Direct sunlight and high temperature.

## SAFETY DATA SHEET

Aussie Membrane (AVM System 500 &amp; 502)

Page 5 of 8

M

### **10.5 Incompatible materials**

Strong oxidizing agents and acids.

M

### **10.6 Hazardous decomposition products**

Other decomposition products: not available

In the event of fire: see section 5

M

## **SECTION 11: Toxicological information**

M

### **11.1 Information on toxicological effects**

M

#### **Acute toxicity:**

Product/ingredient name	Test	Species	Dose
Polychlorobutadiene	LD50, oral	Rat	> 40000 mg/kg
Solvent naphtha (petroleum), heavy arom.	LC50, Inhalation LD50, Administration onto the skin	Rat Rabbit	>590 mg/m <sup>3</sup> , 240 min >2 ml/kg

M

Skin corrosion/irritation: Not available Seriouseye damage/irritation: Not availableRespiratory or skin sensitization: Not availableGerm cell mutagenicity: Not availableCarcinogenicity: Not available.Reproductive toxicity: Not available

M

Specific target organ toxicity (single exposure): Not availableSpecific target organ toxicity (repeated exposure): Not availableAspiration hazard: Not available

#### **Other symptoms:**

Potential acute health effects:

Inhalation: Inhaling steam in high concentration may have negative effect on respiratory system and lungs.

Ingestion: May cause irritation to mouth and digestion system.

Skin contact: May cause sensitization and irritation by skin contact.

Eyes contact: May cause irritation to eyes.

Other symptoms: Headaches, dizziness, vomiting and loss of concentration.

Repeated exposure may cause dermatitis and allergic reaction.

Chronic exposure may cause harm to respiratory system.

M

M

M

## **SECTION 12: Ecological information**

M

### **12.1 Toxicity**

Bitumen forms a layer when released in water and may be harmful to aquatic organisms.

M

### **12.2 Persistence and Degradability**

Not available

## SAFETY DATA SHEET

Aussie Membrane (AVM System 500 &amp; 502)

Page 6 of 8

M

M

### **12.3 Bioaccumulative potential**

The material is a soil and water sources pollutant.

M

### **12.4 Mobility in soil**

Insoluble in water

M

### **12.5 Results of PBT and vPvB assessment**

Not available

M

### **12.6 Other adverse effects**

Not available

M

## **SECTION 13: Disposal considerations**

M

M

### **13.1 Waste treatment methods**

#### **Product**

Waste must be disposed of in accordance with federal, state and local environmental control regulations.

M

#### **Packing**

Empty containers should be taken for local recycling, recovery or waste disposal.

M

## **SECTION 14: Transport information**

M

### **14.1 Un number**

ADR/RID: -IMDG: -IATA: -DOT (US): -

M

### **14.2 UN proper shipping name**

ADR/RID: Not regulatedIMDG: Not regulatedIATA: Not regulatedDOT (US): Not regulated

M

### **14.3 Transport hazard class(es)**

ADR/RID: -IMDG: -IATA: -DOT (US): -

M

### **14.4 Packing group**

ADR/RID: -IMDG: -IATA: -DOT (US): -

M

### **14.5 Environmental hazard**

ADR/RID: -IMDG: -IATA: -DOT (US): -

M

### **14.6 Special precautions for user**

Not available

M

### **14.7 Transport to bulk according to Annex II of MARPOL 73/78 and the IBC Code**

Not available

## SAFETY DATA SHEET

Aussie Membrane (AVM System 500 &amp; 502)

Page 7 of 8

M

### SECTION 15: Regulatory information

M

M

This SDS complies with the following requirements of:  
EU Regulation (EC) No.1907/2006 (REACH) including amendments  
Regulation (EC) No.1272/2008 (CLP)  
29 CFR 1910.1200 (OSHA HCS)  
Globally Harmonized System of Classification and Labelling of Chemicals (GHS)

M

#### **15.1 Safety, health and environmental regulations/legislation specific for the substance or mixture**

M

##### California Prop. 65 Components

This product may contain any chemicals known to State of California to cause cancer, birth defects, or any other reproductive harm.

M

##### TSCA inventory

Bitumen (Residues (petroleum), vaccum), CAS: 64741-56-6  
Polychlorobutadiene, CAS: 9010-98-4  
Solvent naphtha (petroleum), heavy arom., CAS: 64742-94-5

M

#### **15.2 Chemical safety assessment**

Not available.

M

M

M

### SECTION 16: Other information

M

M

#### **HMIS Rating**

Health hazard: 1      Chronic Health Hazard:      Flammability: 0      Physical Hazard 0

M

#### **NFPA Rating**

Health hazard: 1      Fire Hazard: 0      Reactivity Hazard: 0

M

#### **Full text of Hazards Statements referred to in sections 2 and 3:**

Asp. Tox. - Aspiration hazard  
H304: May be fatal if swallowed and enters airways.

M

Training advice: Before using/handling the product one must read carefully present SDS.

M

M

M

#### Key Legend Information:

CAS- Chemical Abstract Service  
ACGIH- American Conference of Governmental Industrial Hygienists  
OSHA- Occupational Safety and Health Administration  
NTP- National Toxicology program  
IARC- International Agency for Research on Cancer  
N/A- Not available  
R-phrases- Risk phrases  
H-statements- Hazard statements  
TLV- Threshold Limit Value TWA-  
Time-weighted average STEL-  
Short-Term Exposure Limit  
CSA- Chemical safety assessment

# Safety Data Sheet

AVM Industries Inc.

Version 1.1      Revision Date 8-5-15

## 1. PRODUCT AND COMPANY IDENTIFICATION

Product Name: Primer 500    Product Code: 500 Primer

**AVM Industries, Inc.**

8245 Remmet Ave, Canoga Park CA 91304-4133

Tel: (818) 888-0050

www.avmindustries.com

**Emergency Contact:**

**AVM Industries, Inc.**

**Tel: (818) 888-0050**

## 2. HAZARDS IDENTIFICATION

**GHS Ratings:**

**GHS Hazards**

**GHS Precautions**

**Signal Word:**

There are no GHS ratings that apply to this product at this time.

## 3. COMPOSITION/IFORMATION ON INGREDIENTS

Chemical Name	CAS number	Weight Concentration %

## 4. FIRST AID MEASURES

IF INHALED: Remove to fresh air and keep at rest in a comfortable position for breathing.

IF IN EYES: Immediately flush with plenty of water for at least 15 minutes. Remove contact lenses if present and easy to do so. Continue rinsing.

IF ON SKIN (or clothing): Remove affected clothing and wash all exposed skin with water for at least 15 minutes .

IF SWALLOWED: rinse mouth thoroughly. Do not induce vomiting without advice from poison control center or medical professional. Get medical attention if you feel unwell.

First-aid measures general: If exposed or concerned, get medical attention/advice. Show this safety data sheet to the doctor in attendance. Wash contaminated clothing before re-use. Never give anything to an unconscious person.

## 5. FIREFIGHTING MEASURES

Flash Point: N/A

LEL:

UEL:

Suitable extinguishing media: Carbon dioxide, Alcohol foam, or dry chemical

Heat builds up pressure in closed containers and can rupture or explode.

Carbon Dioxide, Carbon Monoxide, partially burned Carbon, and acrid fumes.

Use water spray or fog for cooling exposed containers. Exercise caution when fighting any chemical fire. Do not dispose of fire-fighting water in the environment.

Do not enter fire area without proper protective equipment, including respiratory protection

## 6. ACCIDENTAL RELEASE MEASURES

Stop leak at source when it is safe to do so. Use non-sparking tools only. Contain any spills with dikes or absorbents to prevent migration and entry into sewers or streams. Prevent entry to sewers and public waters. Avoid release to the environment. Notify authorities if liquid enters sewers or public waters. This material and its container must be disposed of in a safe way, and as per local legislation.

Absorb the liquid with inert material (such as dry sand or earth) and place it in a chemical waste container. Sweep or shovel spills into appropriate container for disposal.

Persons not wearing protective equipment should be evacuated from area of spill until cleanup has been completed.

Dike and pump the liquid into waste containers.

## 7. HANDLING AND STORAGE

Do not handle until all safety precautions have been read and understood. Keep away from heat, sparks, and open flames. Avoid breathing vapor and mist. Vapors of this material are heavier than air and will collect in low or confined areas. Wash hands and other exposed areas with mild soap and water before eating, drinking or smoking and when leaving work.

Store in a cool, well-ventilated place. Store at temperatures between 50°F-90°F unless otherwise stated. Product must remain in its original sealed containers with manufacturer's name and label in tact. Do not store materials in direct sunlight or where they may be damaged by water or rain. Dry goods (When applicable) must be kept dry.

No Additional Data

## 8. EXPOSURE CONTROLS/PERSONAL PROTECTION

Chemical Name / CAS No.	OSHA Exposure Limits	ACGIH Exposure Limits	Other Exposure Limits
	Not Established	Not Established	Not Established

Use explosion-proof equipment with flammable materials.

Provide adequate general and local exhaust ventilation. Use process enclosures, local exhaust ventilation, or other engineering controls to control airborne levels below recommended exposure limits. Ensure adequate ventilation, especially in confined areas.

Hand protection: Use gloves chemically resistant to this material when prolonged or repeated contact could occur. Gloves should be classified under Standard EN 374 or ASTM F1296. Suggested glove materials are: Neoprene, Nitrile/butadiene rubber, Polyethylene, Ethyl vinyl alcohol laminate, PVC or vinyl. Suitable gloves for this specific application can be recommended by the glove supplier.

Eye protection: Wear eye protection, including chemical splash goggles and a face shield when possibility exists for eye contact due to spraying liquid or airborne particles.

Skin and body protection: Wear long sleeves, and chemically impervious PPE/coveralls to minimize bodily exposure.

Respiratory protection: Use NIOSH-approved dust/particulate respirator. Where vapor, mist, or dust exceed PELs or other applicable OELs, use NIOSH-approved respiratory protective equipment.

Change contaminated clothing immediately. Wash contaminated clothing before reuse.



## 9. PHYSICAL AND CHEMICAL PROPERTIES

<b>Appearance:</b> Liquid <b>Vapor Pressure:</b> 18.8 mm Hg @ 20C <b>Vapor Density:</b> 2.3 <b>Density:</b> 1.01 <b>Freezing point:</b> Not Available <b>Boiling range:</b> 100°C <b>Evaporation rate:</b> Not Available <b>Explosive Limits:</b> Not Available  <b>Autoignition temperature:</b> Not Available <b>Viscosity:</b> Not Available	<b>Odor:</b> Slight <b>Odor threshold:</b> Not Available <b>pH:</b> Not Available <b>Melting point:</b> Not Available <b>Solubility:</b> Not Available <b>Flash point:</b> 999 F,999 C <b>Flammability:</b> Not Available <b>Partition coefficient (n- octanol/water):</b> Not Available <b>Decomposition temperature:</b> Not Available <b>Grams VOC/liter less water</b> 1.91
---	--

## 10. STABILITY AND REACTIVITY

STABLE

Incompatible materials

**No Data Available / Not Applicable**

Hazardous decomposition products

**No Data Available / Not Applicable**

Hazardous polymerization will not occur.

## 11. TOXICOLOGICAL INFORMATION

**Mixture Toxicity**

Toxicological Routes of Entry

**Ingestion**

Specific Target Organs Toxicology

**No Data Available / Not Applicable**

**Effects of Overexposure**

Carcinogenicity

## 12. ECOLOGICAL INFORMATION

No data available

## 13. DISPOSAL CONSIDERATIONS

Waste treatment methods: Obtain the consent of pollution control authorities before discharging to wastewater treatment plants.

Waste disposal recommendations: Dispose in a safe manner in accordance with local/national regulations . Do not allow the product to be released into the environment.

## 14. TRANSPORT INFORMATION

<u>Agency</u>	<u>Proper Shipping Name</u>	<u>UN Number</u>	<u>Packing Group</u>	<u>Hazard Class</u>
DOT	Not regulated for transport			
IATA	Not regulated for transport			
IMDG	Not regulated for transport			

## 15. REGULATORY INFORMATION

U.S. Federal Regulations

### State of California Safe Drinking Water and Toxic Enforcement Act of 1986 (Proposition 65):

WARNING! This product contains the following chemicals which are listed by the State of California as carcinogenic or a reproductive toxin:

- None

The following chemicals are reportable under Sara 313

- None

<u>Country</u>	<u>Regulation</u>	<u>All Components Listed</u>
USA	Toxic Substances Control Act (listed or exempt)	Yes

## 16. OTHER INFORMATION

*This information is provided in good faith and is correct to the best of AVM Industries' knowledge as of the date hereof and is designed to assist our customers; however, AVM makes no representation as to its completeness or accuracy. This product is intended for sale to mainly professional contractor. We require customers to satisfy themselves as to the suitability for their specific applications. Any use which AVM Industries customers or third parties make of this information, or any reliance on, or decisions made based upon it, are the responsibility of such customer or third party. AVM Industries disclaims responsibility for damages, or liability of any kind resulting from the use of this information. THERE ARE NO WARRANTIES OR REPRESENTATIONS, EXPRESS OR IMPLIED, INCLUDING THOSE OF MERCHANTABILITY OR FITNESS FOR A PARTICULAR PURPOSE WITH RESPECT TO THIS INFORMATION OR TO THE PRODUCT IT DESCRIBES. IN NO EVENT SHALL AVM INDUSTRIES BE LIABLE FOR SPECIAL, INCIDENTAL, OR CONSEQUENTIAL DAMAGES.*

Reviewer Revision

Date Prepared: 9/22/2015