



AVM Drain Board 2000 Prefabricated Drainage Composites

Sections 334600 / 334613 / 334616 /
334619 / 334633

Prefabricated Drainage Composites

Product Name

AVM Drain Board 2000

Manufactured by

AVM Industries, Inc.
8245 Remmet Ave, Canoga Park, CA 91304
888.414.1041 818.888.0050
www.avmindustries.com

Product Description

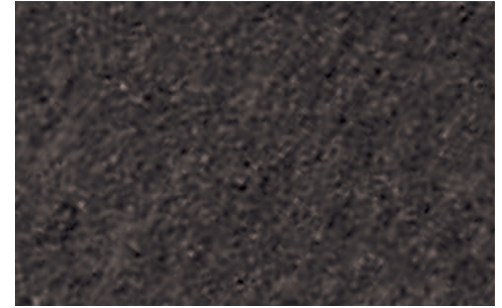
AVM Drain Board 2000 Performs a multi-faceted role by providing protection for waterproofing systems and managing sub-surface water around building foundations. Consists of a light duty impermeable low profile polymeric sheet cusped under heat and pressure to form a high flow dimpled drainage core. The core is then bonded to a layer of nonwoven filter fabric. The filter fabric retains soil or sand particles as well as freshly placed concrete or grout, allowing filtered water to pass into the drainage core. Collected water is then conveyed to a proper collection system.

Where to Use

AVM Drain Board 2000 is ideal for use with foundation walls, retaining walls, planters, roof gardens, bridge abutments, and under slabs.

Delivery, Storage, and Handling

- a. Packing and shipping: Provide materials in original unopened containers with manufacturer's labels intact and legible.
- b. Acceptance at site:
 1. Unload materials: check for damage.
 2. Damaged materials determined by visual inspection will not be accepted.
 3. Remove rejected materials from site immediately.
- c. Store materials in dry area in manufacturer's protective packaging with labels and installation instructions intact.
- d. Store materials under cover, off ground; protect from sunlight.



Project Conditions

1. All surfaces to which the Drainage Boards are applied to must be clean, sound and stable enough to properly attach and hold onto the drain boards being installed.
2. Warn personnel against hazards of working with this product. Sharp edges, weight, etc. Note other hazardous conditions on the job that might require special attention or extra protective gear and or any other special protective or safety procedures.
3. Protect adjacent surfaces which could be damaged during the application procedure.

Inspection of Substrates

1. Verify 1% slope to underslab collection pipes or site water drainage system at underslab drainage system location substrate.
2. Examine conditions and substrates where products specified in this section are installed; submit written notification of unacceptable conditions or substrates.

System Application

Refer to installation instructions.

Quality Control

- a. Visually inspect all drain board surfaces to ensure a full and proper drain board system application, especially at corners, drainage footings and other hard-to-reach areas.
- b. All unsatisfactory areas shall be repaired prior to final acceptance.

Protection of Installed Work

Always protect the waterproofing and drainage system until fully covered with dirt, concrete, shot-crete, etc.

Warranty: One year from date of installation

Shelf Life: One year from date of manufacture when properly stored.

Availability and Cost

Contact AVM Industries or your approved applicator for pricing and availability.

Technical Services

Technical services are available by contacting our offices at: **888.414.1041** or **818.888.0050** or visit **www.avmindustries.com**

System Specifications

See next page.

Physical Properties

Core	2000
Compressive Strength (ASTM D-1621)	5,200 psf (249 kNm ²)
Thickness (ASTM D-1777)	.31" (7.87 mm)
Flow (Hydraulic gradient = 1) (ASTM D-4716)	12.5 g/min/ft (155 L/min/m)

Fabric	2000
Flow (ASTM D-4491)	140 gal/min/ft ² (5704 L/min/m ²)
CBR Puncture (ASTM D-6241)	250 lbs. (1.11 kN)
AOS (ASTM D-4751)	70 U.S. Sieve (.212 mm)
Grab Tensile (ASTM D-4632)	100 lbs. (.45 kN)
U.V. Resistance (ASTM D-4355)	70% @500 hrs.

General Characteristics				
Roll Length	Roll Width	Roll Weight (approx. lbs.)	Packaging	
50 ft. (15.24 m)	4.0 ft. (1.22 m)	-27 lbs./roll	9 rolls/pallet	468 rolls/Truck Load
50 ft. (15.24 m)	6.5 ft. (1.98 m)	-43.75 lbs./roll	9 rolls/pallet	312 rolls/Truck Load

Notes:

Full truck load of 6.5' wide rolls consists of 9 rolls/pallet x 26 pallets = 234 rolls + 78 rolls loosely top-loaded.

Notes: For pricing and availability, please contact AVM Industries or your local distributor

For a complete list of details in CAD or PDF, please visit our website at www.avmindustries.com.

AVM Industries, Inc.
8245 Remmet Ave, Canoga Park, CA 91304
888.414.1041 818.888.0050

Quality Waterproofing Products



www.avmindustries.com