



## AVM Drain Board 2000 Prefabricated Drainage Composites

Sections 334600 / 334613 / 334616 /  
334619 / 334633

Prefabricated Drainage Composites

### Product Name

AVM Drain Board 2000

### Manufactured by

AVM Industries, Inc.  
8245 Remmet Ave, Canoga Park, CA 91304  
888.414.1041 818.888.0050  
www.avmindustries.com

### Product Description

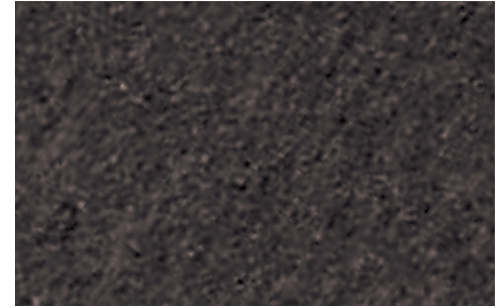
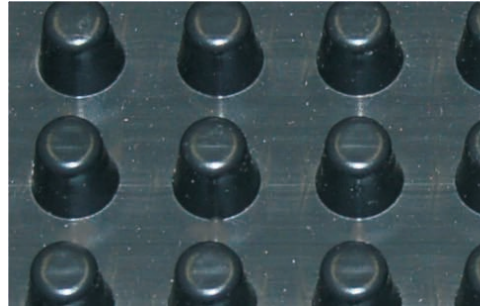
AVM Drain Board 2000 Performs a multi-faceted role by providing protection for waterproofing systems and managing sub-surface water around building foundations. Consists of a light duty impermeable low profile polymeric sheet cuspedated under heat and pressure to form a high flow dimpled drainage core. The core is then bonded to a layer of nonwoven filter fabric. The filter fabric retains soil or sand particles as well as freshly placed concrete or grout, allowing filtered water to pass into the drainage core. Collected water is then conveyed to a proper collection system.

### Where to Use

AVM Drain Board 2000 is ideal for use with foundation walls, retaining walls, planters, roof gardens, bridge abutments, and under slabs.

### Delivery, Storage, and Handling

- a. Packing and shipping: Provide materials in original unopened containers with manufacturer's labels intact and legible.
- b. Acceptance at site:
  1. Unload materials: check for damage.
  2. Damaged materials determined by visual inspection will not be accepted.
  3. Remove rejected materials from site immediately.
- c. Store materials in dry area in manufacturer's protective packaging with labels and installation instructions intact.
- d. Store materials under cover, off ground; protect from sunlight.



### Project Conditions

1. All surfaces to which the Drainage Boards are applied to must be clean, sound and stable enough to properly attach and hold onto the drain boards being installed.
2. Warn personnel against hazards of working with this product. Sharp edges, weight, etc. Note other hazardous conditions on the job that might require special attention or extra protective gear and or any other special protective or safety procedures.
3. Protect adjacent surfaces which could be damaged during the application procedure.

### Inspection of Substrates

1. Verify 1% slope to underslab collection pipes or site water drainage system at underslab drainage system location substrate.
2. Examine conditions and substrates where products specified in this section are installed; submit written notification of unacceptable conditions or substrates.

### System Application

Refer to installation instructions.

### Quality Control

- a. Visually inspect all drain board surfaces to ensure a full and proper drain board system application, especially at corners, drainage footings and other hard-to-reach areas.
- b. All unsatisfactory areas shall be repaired prior to final acceptance.

### Protection of Installed Work

Always protect the waterproofing and drainage system until fully covered with dirt, concrete, shot-crete, etc.

Warranty: One year from date of installation

Shelf Life: One year from date of manufacture when properly stored.

### Availability and Cost

Contact AVM Industries or your approved applicator for pricing and availability.

### Technical Services

Technical services are available by contacting our offices at: **888.414.1041** or **818.888.0050** or visit **www.avmindustries.com**

### System Specifications

See next page.

## Physical Properties

Core	2000
Compressive Strength (ASTM D-1621)	5,200 psf (249 kNm <sup>2</sup> )
Thickness (ASTM D-1777)	.31" (7.87 mm)
Flow (Hydraulic gradient = 1) (ASTM D-4716)	12.5 g/min/ft (155 L/min/m)

Fabric	2000
Flow (ASTM D-4491)	140 gal/min/ft <sup>2</sup> (5704 L/min/m <sup>2</sup> )
CBR Puncture (ASTM D-6241)	250 lbs. (1.11 kN)
AOS (ASTM D-4751)	70 U.S. Sieve (.212 mm)
Grab Tensile (ASTM D-4632)	100 lbs. (.45 kN)
U.V. Resistance (ASTM D-4355)	70% @500 hrs.

General Characteristics				
Roll Length	Roll Width	Roll Weight (approx. lbs.)	Packaging	
50 ft. (15.24 m)	4.0 ft. (1.22 m)	-27 lbs./roll	9 rolls/pallet	468 rolls/Truck Load
50 ft. (15.24 m)	6.5 ft. (1.98 m)	-43.75 lbs./roll	9 rolls/pallet	312 rolls/Truck Load

Notes:

Full truck load of 6.5' wide rolls consists of 9 rolls/pallet x 26 pallets = 234 rolls + 78 rolls loosely top-loaded.

Notes: For pricing and availability, please contact AVM Industries or your local distributor

For a complete list of details in CAD or PDF, please visit our website at [www.avmindustries.com](http://www.avmindustries.com).

**AVM Industries, Inc.**  
8245 Remmet Ave, Canoga Park, CA 91304  
888.414.1041 818.888.0050

**Quality Waterproofing Products**



**[www.avmindustries.com](http://www.avmindustries.com)**



## AVM Drain Board 6000/6020 Prefabricated Drainage Composites

Sections 334600 / 334613 / 334616 /  
334619 / 334633

Prefabricated Drainage Composites

### Product Name

AVM Drain Board 6000/6020

### Manufactured by

AVM Industries, Inc.  
8245 Remmet Ave, Canoga Park, CA 91304  
888.414.1041 818.888.0050  
www.avmindustries.com

### Product Description

Provides protection for waterproofing systems and managing subsurface water around building foundations. Soil backfill is retained while allowing water to pass into the drainage system providing hydrostatic relief. Collected water is then conveyed to AVM Bottom Drain 6" or AVM Bottom Drain 12", or other collection systems.

Consists of an impermeable polymeric sheet cusped under heat and pressure to form a high flow dimpled drainage core. The core is then bonded to a layer of nonwoven filter fabric. The filter fabric retains soil or sand particles as well as freshly placed concrete or grout, allowing filtered water to pass into the drainage core.

### Where to Use

AVM Drain Board 6000/6200 is ideal for use with foundation walls, retaining walls, planters, roof gardens, bridge abutments, and under slabs.

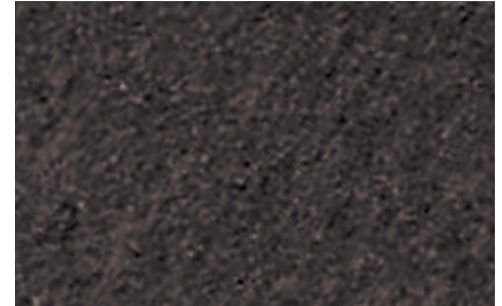
### AVM Drain Board 6000 / 6020

Maintains a very high flow rate while providing a higher compressive strength for greater depths. A very popular choice for vertical and horizontal single sided drainage applications. Moderate duty.

### AVM Drain Board 6000XL / 6020XL\*

Designed for extra heavy duty vertical and horizontal applications that demand greater compressive strength and improved filtration for challenging soil conditions. Heavier duty drain core & fabric.

\* 6020 and 6020XL are identical to 6000 and 600XL with the addition of a membrane protective film on the back side.



### Delivery, Storage, and Handling

- a. Packing and shipping: Provide materials in original unopened containers with manufacturer's labels intact and legible.
- b. Acceptance at site:
  1. Unload materials: check for damage.
  2. Damaged materials determined by visual inspection will not be accepted.
  3. Remove rejected materials from site immediately.
- b. Storage and protection:
  1. Store materials in dry area in manufacturer's protective packaging with labels and installation instructions intact.
  2. Store materials under cover, off ground; protect from sunlight.
  3. Transmissivity or Flow Q with hydraulic gradient of 1 with confining stress indicated in MANUFACTURED UNITS Article in accord with ASTM D4716-01

### Project Conditions

1. All surfaces to which the Drainage Boards are applied to must be clean, sound and stable enough to properly attach and hold onto the drain boards being installed.
2. Warn personnel against hazards of working with this product. Sharp edges, weight, etc. Note other hazardous conditions on the job that might require special attention or extra protective gear and or any other special protective or safety procedures.
3. Protect adjacent surfaces which could be damaged during the application procedure.

### Inspection of Substrates

1. Verify 1% slope to underslab collection pipes or site water drainage system at underslab drainage system location substrate.
2. Examine conditions and substrates where products specified in this section are installed; submit written notification of unacceptable conditions or substrates.

### System Application

Refer to installation instructions.

### Quality Control

- a. Visually inspect all drain board surfaces to ensure a full and proper drain board system application, especially at corners, drainage footings and other hard-to-reach areas.
- b. All unsatisfactory areas shall be repaired prior to final acceptance.

### Protection of Installed Work

Always protect the waterproofing and drainage system until fully covered with dirt, concrete, shot-crete, etc.

### Availability and Cost

Contact AVM Industries or your approved applicator for pricing and availability.

### Technical Services

Technical services are available by contacting our offices at: **888.414.1041** or **818.888.0050** or visit **www.avmindustries.com**

### System Specifications

See next page.

## Physical Properties

Core	6000/6020	6000XL/6020XL
Compressive Strength (ASTM D-1621)	15,000 psf (719 kNm <sup>2</sup> )	16,500 psf (790 kNm <sup>2</sup> )
Thickness (ASTM D-1777)	.40" (10.16 mm)	.40" (10.16 mm)
Flow (Hydraulic gradient = 1) (ASTM D-4716)	21 g/min/ft (260 L/min/m)	21 g/min/ft (260 L/min/m)

Fabric	6000/6020	6000XL/6020XL
Flow (ASTM D-4491)	140 gal/min/ft <sup>2</sup> (5704 L/min/m <sup>2</sup> )	110 gal/min/ft <sup>2</sup> (4482 L/min/m <sup>2</sup> )
Puncture (ASTM D-4833)	65 lbs. (.30 kN)	95 lbs. (.42 kN)
AOS (EOS)	70 U.S. Sieve (.212 mm)	70 U.S. Sieve (.212 mm)
Grab Tensile (ASTM D-4632)	100 lbs. (.45 kN)	160 lbs. (.71 kN)

General Characteristics					
Roll Length	Roll Width	Roll Weight (approx. lbs.)			
		6000	6020	6000XL	6020XL
50 ft. (15.24 m)	4.0 ft. (1.22 m)	39.0	40.5	45.0	46.5
50 ft. (15.24 m)	6.5 ft. (1.98 m)	63.0	65.5	73.0	75.5
50 ft. (15.24 m)	8.5 ft. (2.59 m)	82.0	85.0	95.0	98.0

### Notes:

AVM Drain Board 6000 in 4' and 6.5' widths are stocked items.

All other drain board versions are "Special Order" items. Allow 2 weeks lead time for special order items.

For pricing and availability of special order items, please contact AVM Industries or your local distributor.

For a complete list of details in CAD or PDF, please visit our website at [www.avmindustries.com](http://www.avmindustries.com).

**AVM Industries, Inc.**  
 8245 Remmet Ave, Canoga Park, CA 91304  
 888.414.1041 818.888.0050

**Quality Waterproofing Products**



**[www.avmindustries.com](http://www.avmindustries.com)**



# TECH DATA SHEET

Sections - 334600 / 334616.16 / 334619.16 / 334623.19

## AVM Drain Board 9000/9020/9080

### Prefabricated Drainage Composites

Sections 334600 / 334616.16 /  
334619.16 / 334623.19

Prefabricated Drainage Composites

#### Product Name

AVM Drain Board 9000 / 9020 / 9080

#### Manufactured by

AVM Industries, Inc.  
8245 Remmet Ave, Canoga Park, CA 91304  
888.414.1041 818.888.0050  
www.avmindustries.com

#### Product Description

##### Drain Board for Horizontal Applications:

AVM Drain Board 9000 provides protection for waterproofing systems and collecting excess water in planters, rooftop gardens, and other horizontal surfaces such as in-between slab waterproofing applications. The filter fabric retains soil or sand particles as well as freshly placed concrete or grout, allowing filtered water to pass into the drainage core. The collected water is then conveyed to a proper collection system.

#### Where to Use

AVM Drain Board 9000/9020/9080 is ideal for use with planters, roof gardens, plaza decks, split-slabs, and under slabs.

#### AVM Drain Board 9000

Consists of a heavy duty impermeable polymeric sheet cusped under heat and pressure to form a high flow dimpled drainage core. The core is then bonded to a layer of woven filter fabric. The filter fabric retains soil or sand particles as well as freshly placed concrete or grout, allowing filtered water to pass into the drainage core.

#### AVM Drain Board 9020

The identical properties as AVM Drain Board 9020 with the addition of a protection sheet bonded to the back side of the cusped core providing protection for soft membrane waterproofing systems. AVM Drain Board 9020 is compatible with waterproofing without the use of a protection board.

#### AVM Drain Board 9080

Consists of a heavy-duty impermeable polymeric cusped sheet bonded to a layer of heavy-duty non-woven filter fabric (8 oz./sq. yd).



#### Delivery, Storage, and Handling

- Packing and shipping: Provide materials in original unopened containers with manufacturer's labels intact and legible.
- Acceptance at site:
  - Unload materials: check for damage.
  - Damaged materials determined by visual inspection will not be accepted.
  - Remove rejected materials from site immediately.
- Storage and protection:
  - Store materials in dry area in manufacturer's protective packaging with labels and installation instructions intact.
  - Store materials under cover, off ground; protect from sunlight.
  - Transmissivity or Flow Q with hydraulic gradient of 1 with confining stress indicated in MANUFACTURED UNITS Article in accord with ASTM D4716-01

#### Project Conditions

- All surfaces to which the Drainage Boards are applied to must be clean, sound and stable enough to properly attach and hold onto the drain boards being installed.
- Warn personnel against hazards of working with this product. Sharp edges, weight, etc. Note other hazardous conditions on the job that might require special attention or extra protective gear and or any other special protective or safety procedures.
- Protect adjacent surfaces which could be damaged during the application procedure.

#### Inspection of Substrates

- Verify 1% slope to underslab collection pipes or site water drainage system at underslab drainage system location substrate.
- Examine conditions and substrates where products specified in this section are installed; submit written notification of unacceptable conditions or substrates.

#### System Application

Refer to installation instructions.

#### Quality Control

- Visually inspect all drain board surfaces to ensure a full and proper drain board system application, especially at corners, drainage footings and other hard-to-reach areas.
- All unsatisfactory areas shall be repaired prior to final acceptance.

#### Protection of Installed Work

Always protect the waterproofing and drainage system until fully covered with dirt, concrete, shot-crete, etc.

#### Availability and Cost

Contact AVM Industries or your approved applicator for pricing and availability.

#### Technical Services

Technical services are available by contacting our offices at: **888.414.1041** or **818.888.0050** or visit [www.avmindustries.com](http://www.avmindustries.com)

#### System Specifications

See next page.

## Physical Properties

Core	9000/9020	9080
Compressive Strength (ASTM D-1621)	21,000 psf (1005 kNm <sup>2</sup> )	21,000 psf (1005 kNm <sup>2</sup> )
Thickness (ASTM D-1777)	.40" (10.16 mm)	.40" (10.16 mm)
Flow (Hydraulic gradient = 1) (ASTM D-4716)	21 g/min/ft (261 L/min/m)	21 g/min/ft (261 L/min/m)

Fabric	9000/9020	9080
Flow (ASTM D-4491)	145 gal/min/ft <sup>2</sup> (5907 L/min/m <sup>2</sup> )	95 gal/min/ft <sup>2</sup> (3866 L/min/m <sup>2</sup> )
Puncture (ASTM D-4833)	100 lbs. (.44 kN)	130 lbs. (.58 kN)
AOS (EOS)	40 U.S. Sieve (.42 mm)	90 U.S. Sieve (.18 mm)
Grab Tensile (ASTM D-4632)	355 lbs. (1.62 kN)	205 lbs. (.90 kN)

General Characteristics					
Roll Length	Roll Width		Roll Weight (approx. lbs.)		
			9000	9020	9080
50 ft. (15.24 m)	4 ft.	(1.22 m)	50.0	50.0	
50 ft. (15.24 m)	8 ft.	(2.45 m)	100.0	100.0	

For a complete list of details in CAD or PDF, please visit our website at [www.avmindustries.com](http://www.avmindustries.com).

**AVM Industries, Inc.**  
 8245 Remmet Ave, Canoga Park, CA 91304  
 888.414.1041 818.888.0050

**Quality Waterproofing Products**



**[www.avmindustries.com](http://www.avmindustries.com)**