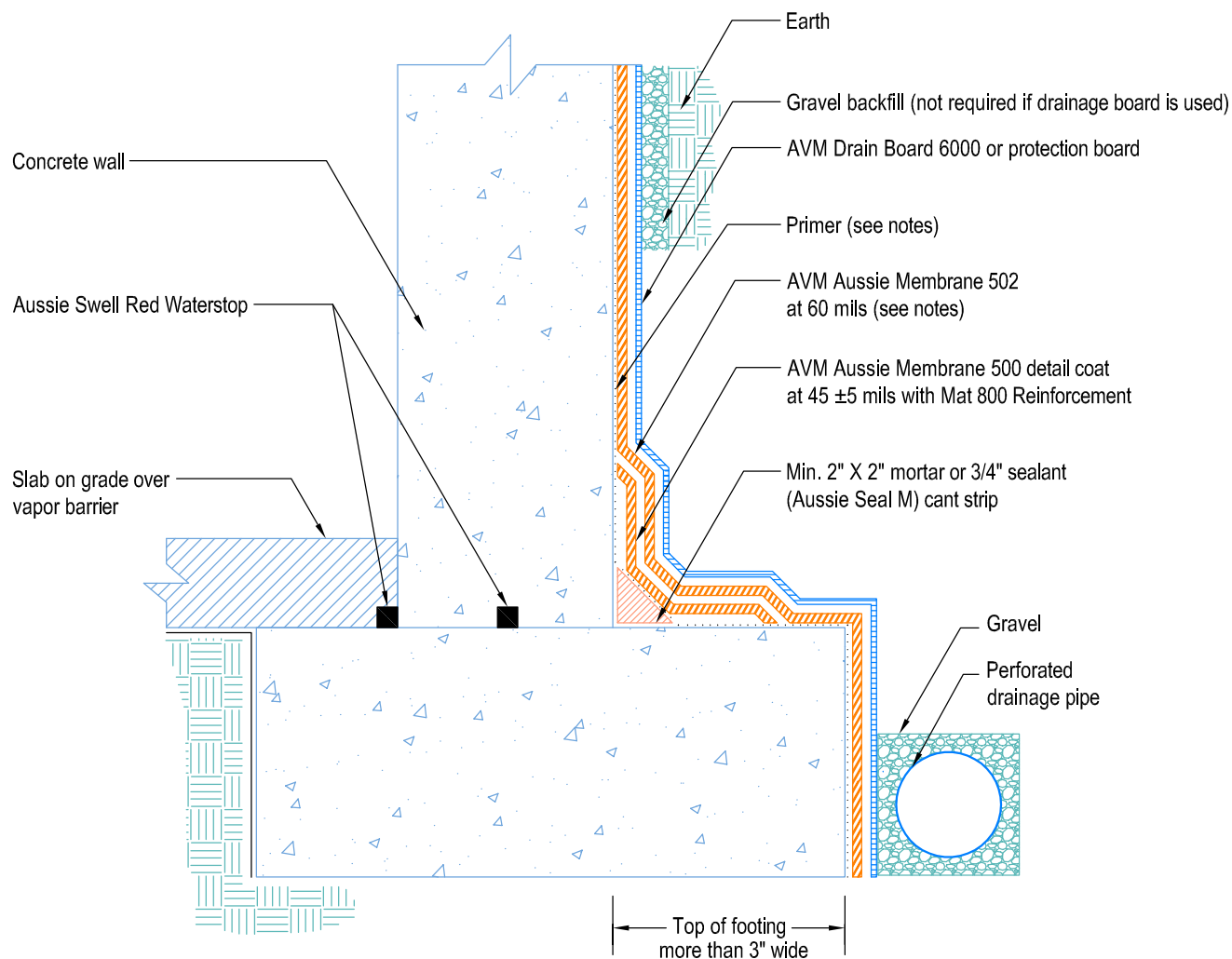


DETAIL # : AVM-502-0002-C
Aussie Membrane 502
VIEW TYPE: Cut Sheet

Retaining Walls Slab on Grade at Top of Footing Aussie Membrane 502 Fluid Applied Waterproofing



Notes:

1. Aussie Membrane 502 is a two-component, Water-Based Bitumen Membrane (Spray Applied) for Below-Grade, Lagging, Between-Slab, Planters, Roof-Gardens, Paver Systems and similar type Waterproofing.
2. In Non-Hydrostatic conditions: Min 60 Mils Dry Film Thickness (DFT). In Hydrostatic conditions: Min 90 Mils Dry Film Thickness (DFT)
3. Contact AVM if no drain board or protection board is specified.
4. AVM's "Bottom Drain 12" may be accepted in lieu of the perforated drainage pipe (French Drain). Check local building codes for approval.
5. Exposed top of footing is More than 3"
6. All corners require fabric reinforced detail coat. All inside corners also require min 2"x2" mortar or 3/4" sealant (Aussie Seal M) cant prior to installing the detail coat.
7. Verify concrete wall absorbs water. If not, prime with AVM Adhesive 501. Otherwise, prime surfaces with Aussie Membrane 502 Resin.