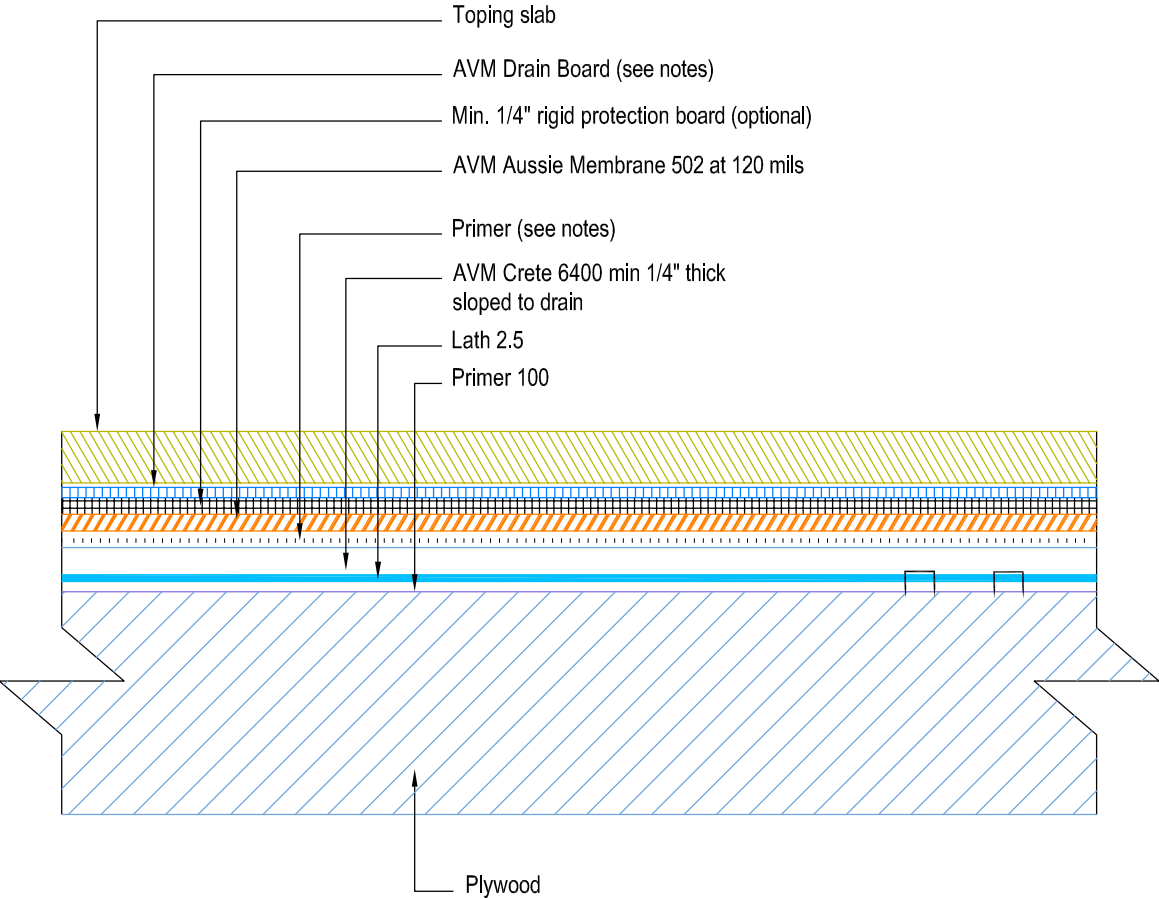


DETAIL # : AVM-502-2502-P
Aussie Membrane 502
VIEW TYPE: Cut Sheet

Topping Slab on Plywood Substrate over Aussie Membrane 502 Fluid Applied Waterproofing



- Notes:**
1. Aussie Membrane 502 is a two-component, Water-Based Bitumen Membrane (Spray Applied) for Below-Grade, Lagging, Between-Slab, Planters, Roof-Gardens, Paver Systems and similar type Waterproofing.
 2. Topping slabs for pedestrian traffic use AVM Drain Board 6000
 3. Topping slabs above 4" thick or for vehicular traffic use AVM Drain Board 9000
 4. For extra protection, use asphaltic panels below the drainage boards.
 5. Crete 6400. Refer to the Crete 6400 Tech Data Sheets or Installation Instructions for more information.
 6. All corners require fabric reinforced detail coat. All inside corners also require min 2"x2" mortar or 3/4" sealant (Aussie Seal M) cant prior to installing the detail coat.
 7. Verify concrete wall absorbs water. If not, prime with AVM Adhesive 501. Otherwise, prime surfaces with Aussie Membrane 502 Resin.