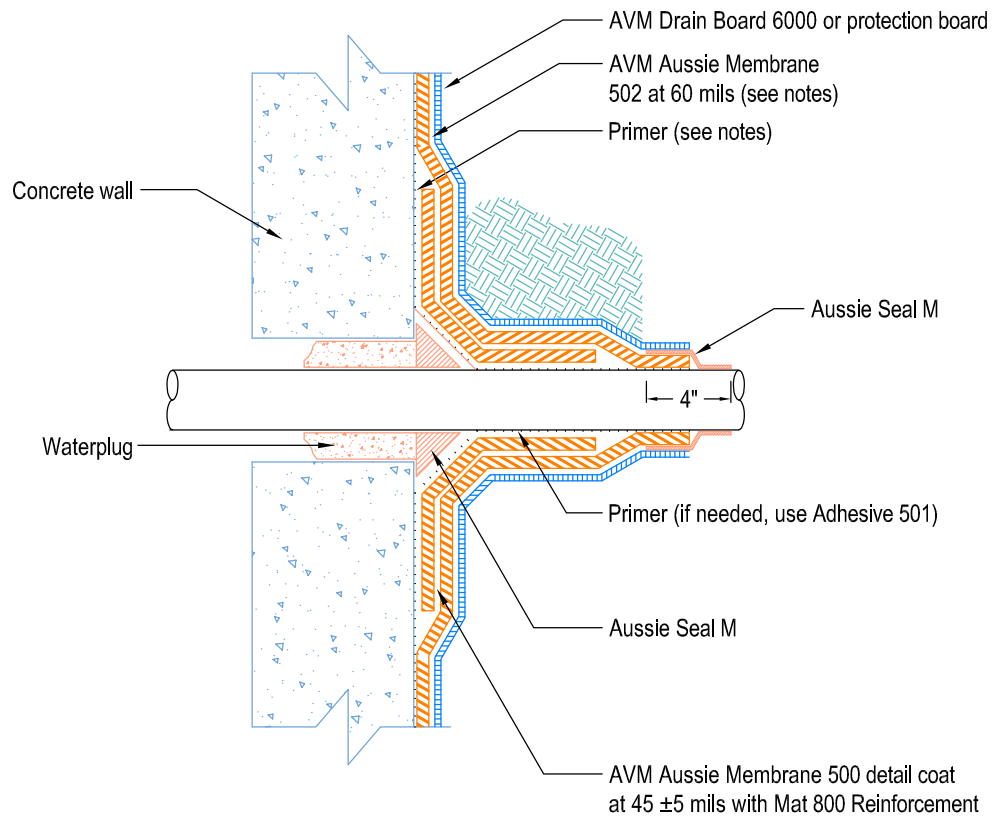


DETAIL # : AVM-502-6506-C
Aussie Membrane 502
VIEW TYPE: Cut Sheet

Pipe Penetration Thru Wall (Option 3) Aussie Membrane 502 Fluid Applied Waterproofing



Notes:

1. Aussie Membrane 502 is a two-component, Water-Based Bitumen Membrane (Spray Applied) for Below-Grade, Lagging, Between-Slab, Planters, Roof-Gardens, Paver Systems and similar type Waterproofing.
2. In Non-Hydrostatic conditions: Min 60 Mils Dry Film Thickness (DFT). In Hydrostatic conditions: Min 90 Mils Dry Film Thickness (DFT)
3. Contact AVM if no drain board or protection board is specified.
4. With Sealant around pipe.
5. All corners require fabric reinforced detail coat. All inside corners also require min 2"x2" mortar or 3/4" sealant (Aussie Seal M) cant prior to installing the detail coat.
6. Verify concrete wall absorbs water. If not, prime with AVM Adhesive 501. Otherwise, prime surfaces with Aussie Membrane 502 Resin.