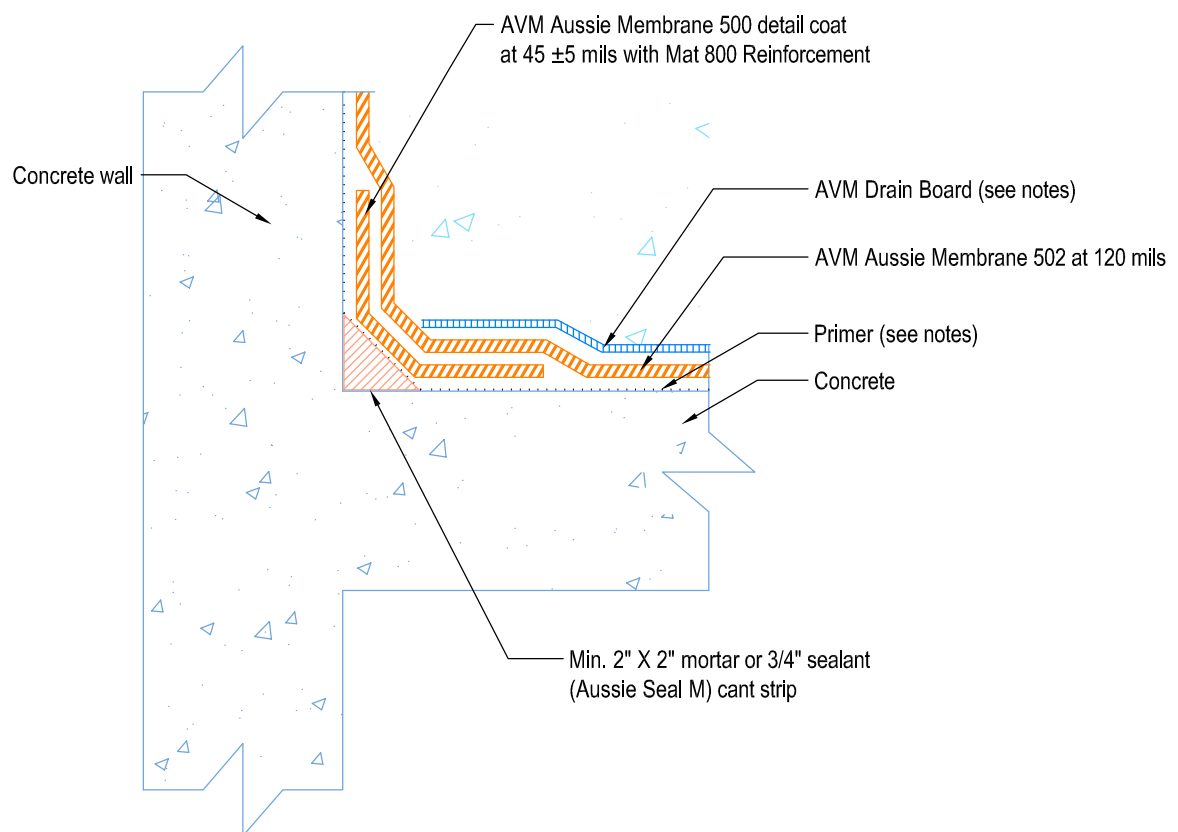


DETAIL # :  
AVM-502-7502-C  
Aussie Membrane 502

VIEW TYPE:  
Cut Sheet

# Transition Horizontal to Vertical Topping Slab or Pavers Aussie Membrane 502 Fluid Applied Waterproofing



## Notes:

1. Aussie Membrane 502 is a two-component, Water-Based Bitumen Membrane (Spray Applied) for Below-Grade, Lagging, Between-Slab, Planters, Roof-Gardens, Paver Systems and similar type Waterproofing.
2. In Non-Hydrostatic conditions: Min 60 Mils Dry Film Thickness (DFT). In Hydrostatic conditions: Min 90 Mils Dry Film Thickness (DFT)
3. Topping slabs for pedestrian traffic use AVM Drain Board 6000
4. Topping slabs above 4" thick or for vehicular traffic use AVM Drain Board 9000
5. Contact AVM if no drain board or protection board is specified.
6. All corners require fabric reinforced detail coat. All inside corners also require min 2"x2" mortar or 3/4" sealant (Aussie Seal M) cant prior to installing the detail coat.
7. Verify concrete wall absorbs water. If not, prime with AVM Adhesive 501. Otherwise, prime surfaces with Aussie Membrane 502 Resin.