

DETAIL # :
AVM-502-8002-C
Aussie Membrane 502

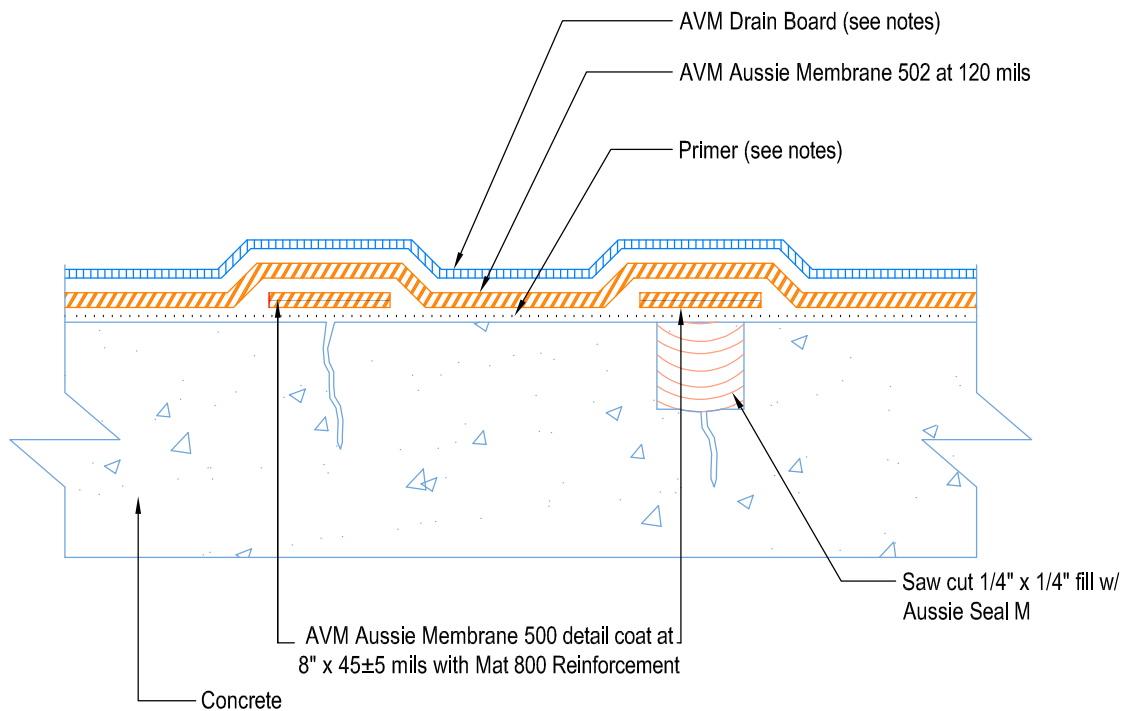
VIEW TYPE:
Cut Sheet

Crack Repair (Option 1) Aussie Membrane 502 Fluid Applied Waterproofing



Crack less than 1/16" wide

Crack greater than 1/16" wide



Notes:

1. Aussie Membrane 502 is a two-component, Water-Based Bitumen Membrane (Spray Applied) for Below-Grade, Lagging, Between-Slab, Planters, Roof-Gardens, Paver Systems and similar type Waterproofing.
2. In Non-Hydrostatic conditions: Min 60 Mills Dry Film Thickness (DFT). In Hydrostatic conditions: Min 90 Mills Dry Film Thickness (DFT)
3. Contact AVM if no drain board or protection board is specified.
4. Topping slabs for pedestrian traffic use AVM Drain Board 6000
5. Topping slabs above 4" thick or for vehicular traffic use AVM Drain Board 9000
6. All corners require fabric reinforced detail coat. All inside corners also require min 2"x2" mortar or 3/4" sealant (Aussie Seal M) cant prior to installing the detail coat.
7. Verify concrete wall absorbs water. If not, prime with AVM Adhesive 501. Otherwise, prime surfaces with Aussie Membrane 502 Resin.