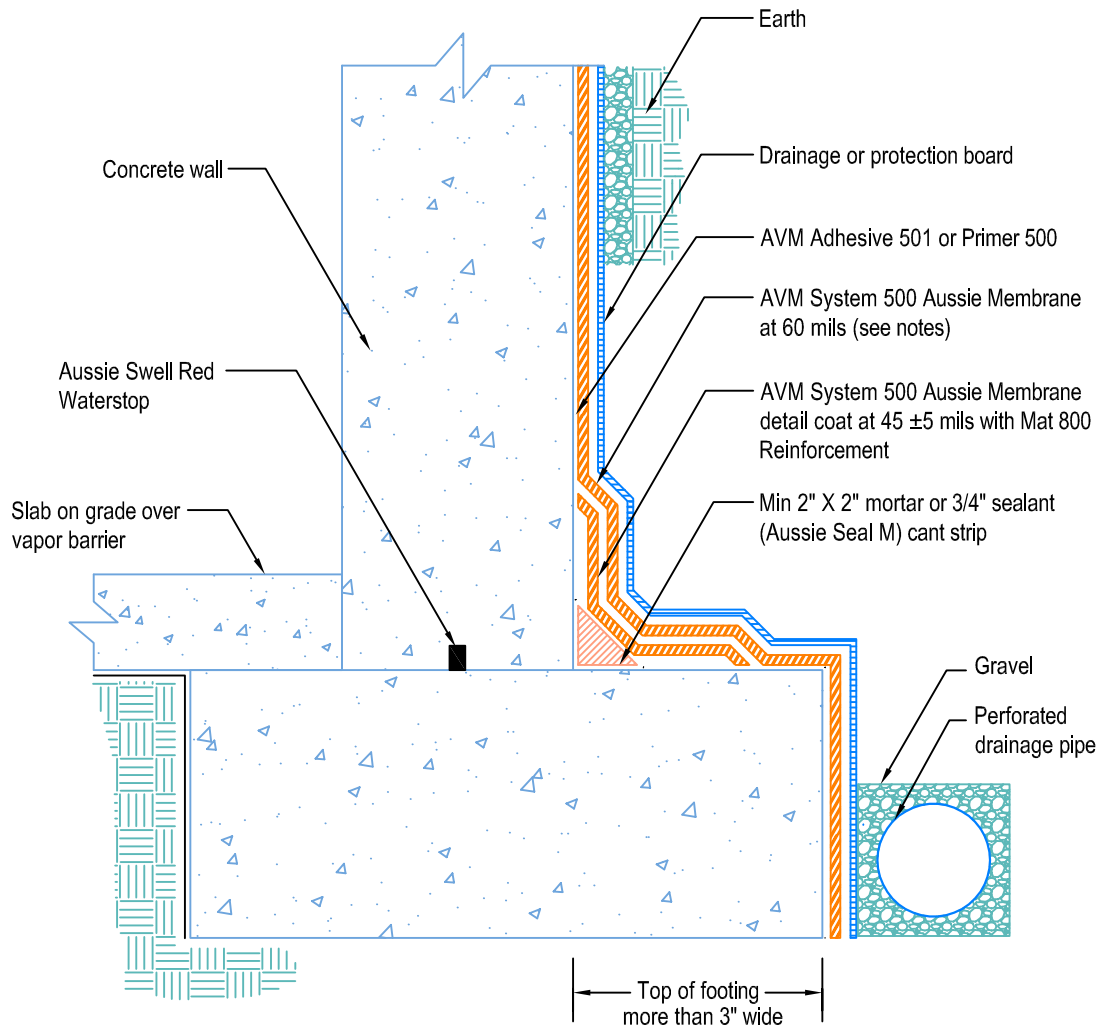


DETAIL # :
 AVM-500-0002-C
 AVM System 500
 Aussie Membrane
 VIEW TYPE:
 Cut Sheet

Retaining Walls
 Slab on Grade at Top of Footing
AVM System 500 Aussie Membrane
 Fluid Applied Waterproofing



Notes:

1. Aussie Membrane 500 is a water-based bitumen (roller or brushed applied) for below-grade, between-slab, planters, roof-gardens and similar type waterproofing
2. In Non-Hydrostatic conditions: Min 60 Mils Dry Film Thickness (DFT). In Hydrostatic conditions: Min 90 Mils Dry Film Thickness (DFT)
3. Some installations and warranties require thicker installations and/or fabric reinforcement. Consult AVM for details.
4. Contact AVM if no drain board or protection board is specified
5. Prime with AVM Adhesive 501 (solvent-based primer) or Primer 500 (water-based primer)
6. AVM's "bottom drain 12" may be accepted in lieu of the perforated drainage pipe (French drain.) Check local building codes for approval.
7. Exposed top of footing is more than 3".
8. Inside corner (wall-to-footing) shown with water stop

AVM Industries, Inc.
 8245 Remmet Ave, Canoga Park, CA 91304

Quality Waterproofing Products

888.414.1041 818.888.0050
 www.avmindustries.com