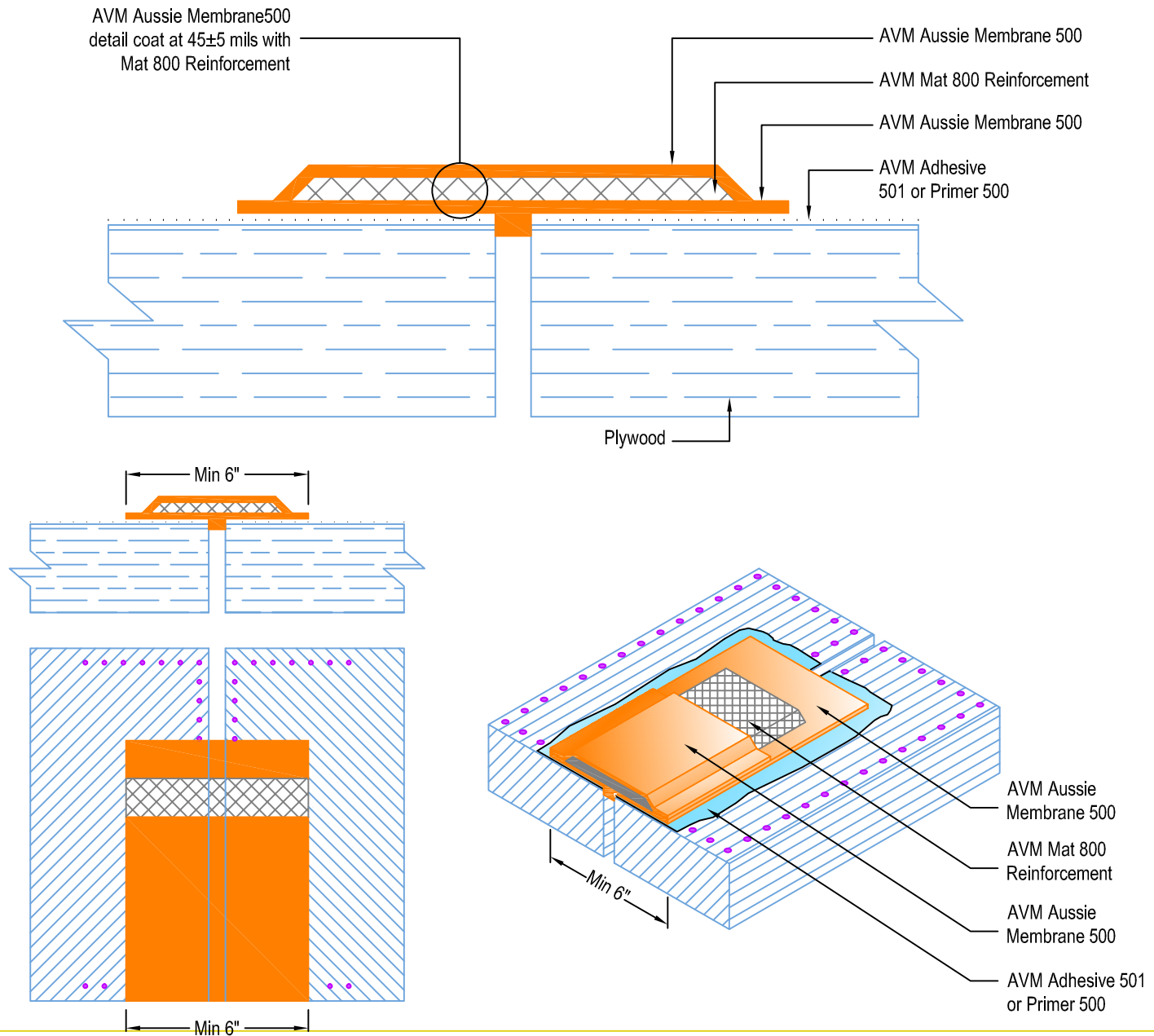


DETAIL # :  
 AVM-500-2580-P  
 AVM System 500  
 Aussie Membrane  
 VIEW TYPE:  
 Cut Sheet

# Plywood Joint Detail for Topping Slabs Waterproofing on Plywood Substrates AVM System 500 Aussie Membrane Fluid Applied Waterproofing



**Notes:**

1. This detail may not be applicable or needed if installing metal lath and AVM Crete 6400 over the plywood substrates before installing the Aussie Membrane. (See Detail # AVM-500-2502-P)
2. Aussie Membrane 500 is a Water-Based Bitumen (Roller or Brush Applied) for Below-Grade, Between-Slab, Planters, Roof-Gardens and similar type waterproofing.
3. For proper membrane thickness and drainage / protection requirements, refer to other "Topping Slab on Plywood" Details.
4. Make sure all nails are flush with the plywood surface or slightly sunken in below it. (Nails protruding above the plywood surface may puncture the membrane)
5. Remove/grind/repair as necessary any other protrusions, sharp edges, etc that may puncture or damage the membrane.
6. Reinforce the Aussie Membrane with AVM Mat 800 as shown at all plywood joints, flashings, penetrations, etc.
7. If extra protection is needed, use double reinforcement. (two layers of Mat 800 reinforcing fabric)