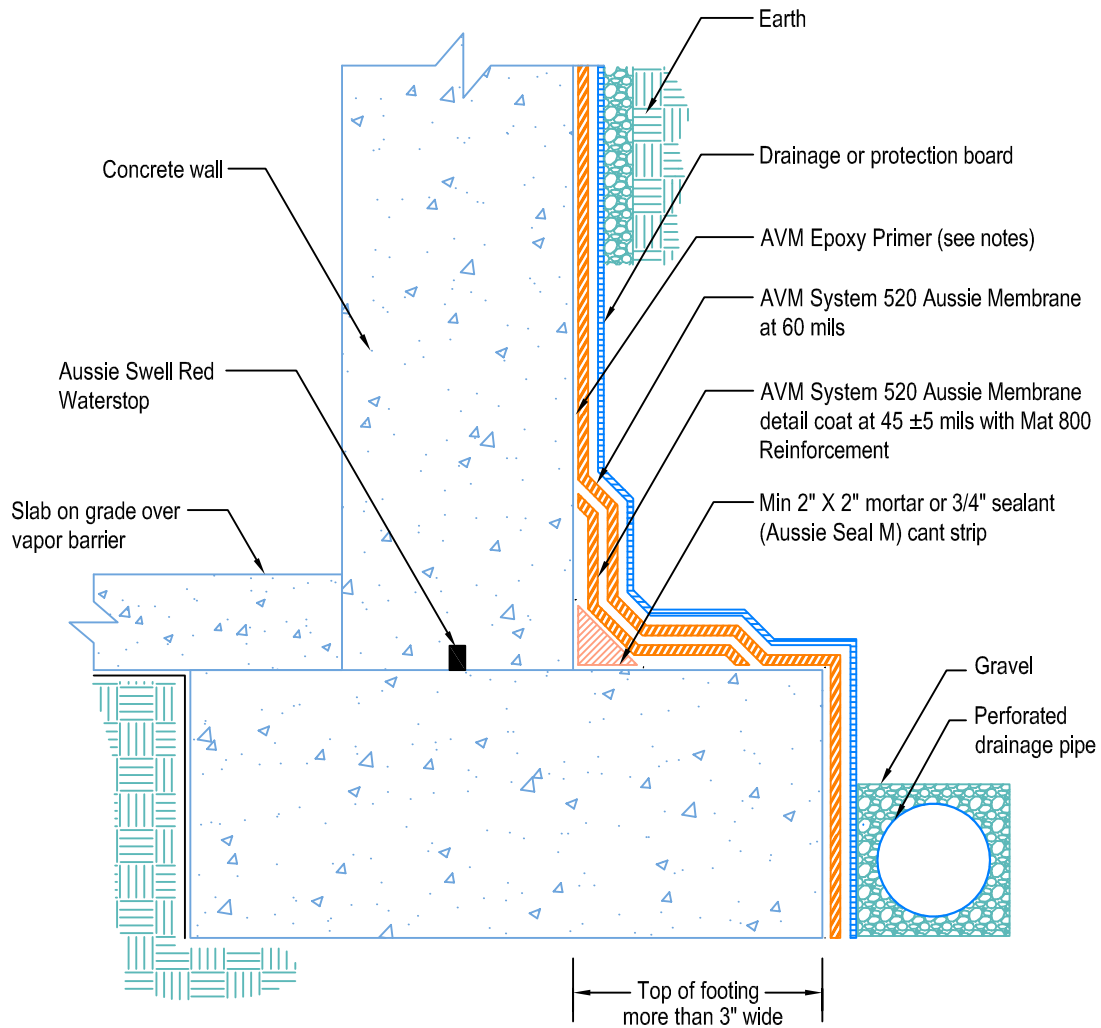


DETAIL # :
 AVM-520-0002-C
 AVM System 520
 Aussie Membrane
 VIEW TYPE:
 Cut Sheet

Retaining Walls
 Slab on Grade at Top of Footing
AVM System 520 Aussie Membrane
 Fluid Applied Waterproofing



Notes:

1. Aussie Membrane 520 is a Polyurethane liquid (Roller or Brush Applied) for Below-Grade, Between-Slab, Planters, Roof-Gardens and similar type Waterproofing.
2. Epoxy primer may be required if proper adhesion is not achieved.
3. Some installations and warranties require thicker installations and/or fabric reinforcement. Consult AVM for details.
4. Contact AVM if no drain board or protection board is specified
5. AVM's "bottom drain 12" may be accepted in lieu of the perforated drainage pipe (French drain.) Check local building codes for approval.
6. Exposed top of footing is more than 3".
7. Inside corner (wall-to-footing) shown with water stop