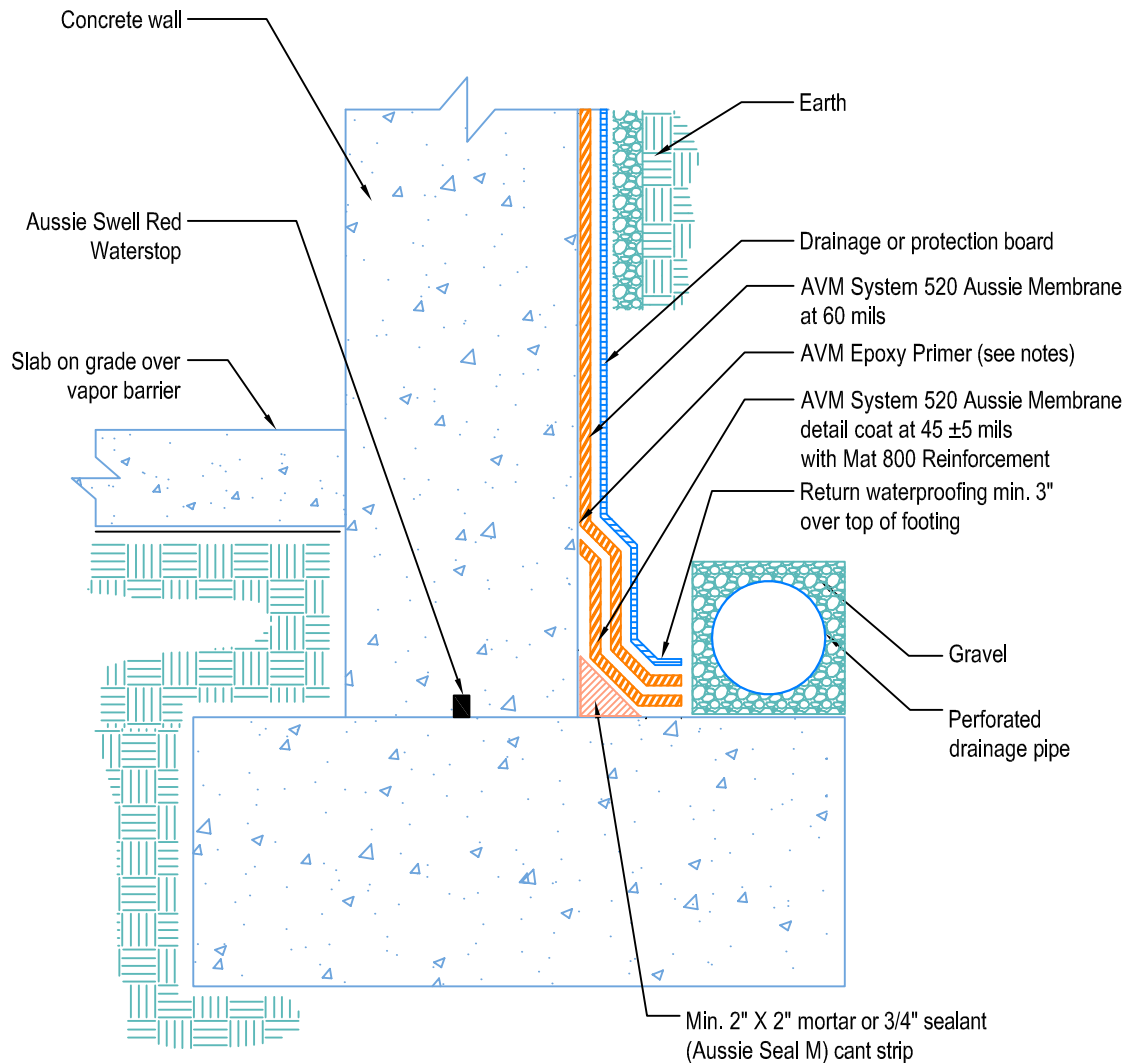


DETAIL # :	AVM-520-0008-C
AVM System 520 Aussie Membrane	
VIEW TYPE:	Cut Sheet

# Retaining Walls Elevated Slab on Grade at Top of Footing AVM System 520 Aussie Membrane Fluid Applied Waterproofing



- Notes:**
1. Aussie Membrane 520 is a Polyurethane liquid (Roller or Brush Applied) for Below-Grade, Between-Slab, Planters, Roof-Gardens and similar type Waterproofing.
  2. Epoxy primer may be required if proper adhesion is not achieved.
  3. Contact AVM if no drain board or protection board is specified
  4. AVM's "bottom drain 12" may be accepted in lieu of the perforated drainage pipe (French drain.) Check local building codes for approval.
  5. Inside corner (wall-to-footing) shown with water stop