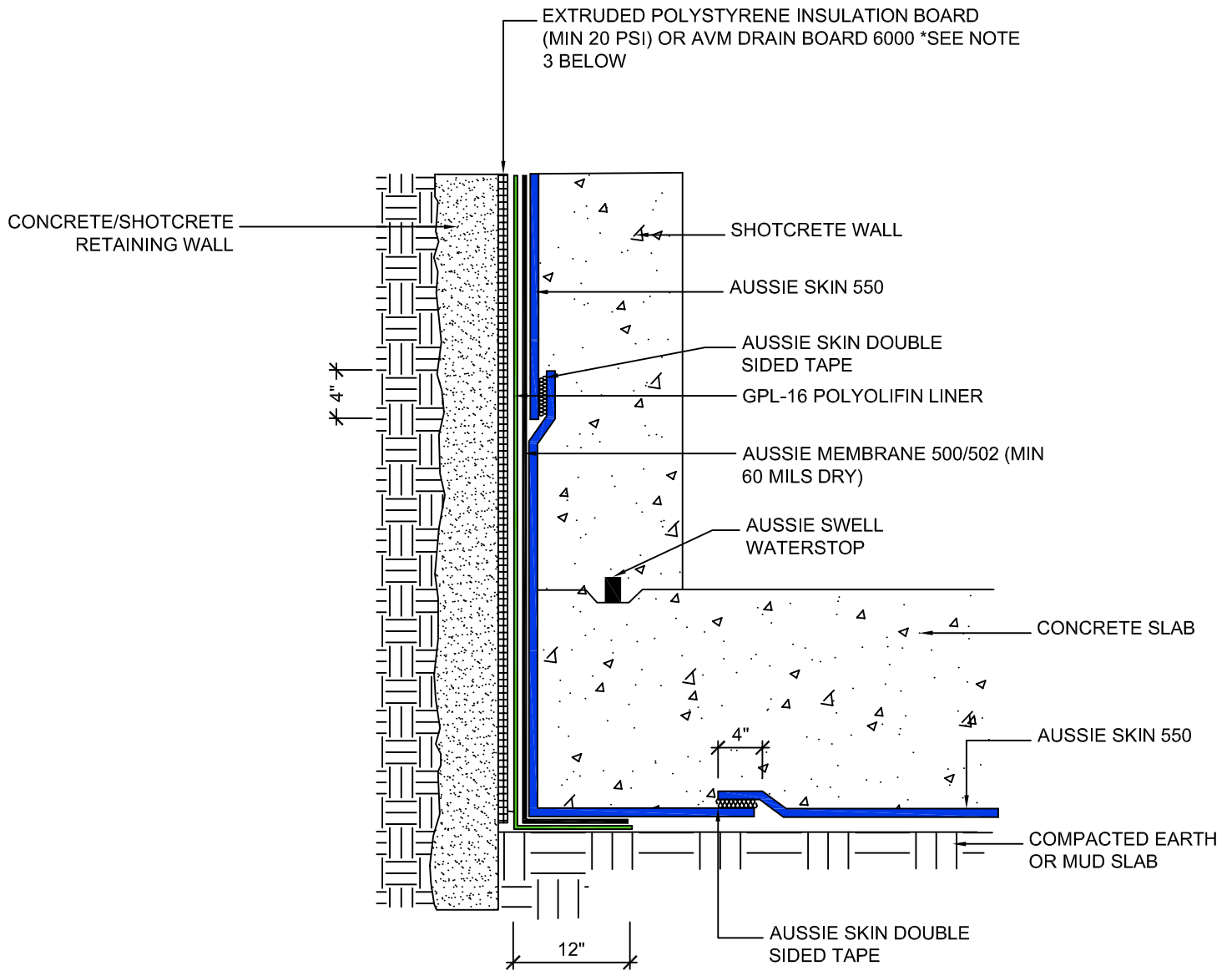


DETAIL #:
AVM-550-1521
 AVM System 550
Aussie Skin 550

**Blind Side Waterproofing over Concrete/Shotcrete,
 Dual System (Hdrostatic)**



NOTES:

1. Aussie Skin 550 is a Heavy, Duty, Easy to Install, Puncture Resistant Sheet Waterproofing Membrane with added technologies creating excellent adhesion between the membrane and wet Concrete or Shot-Crete.
2. For proper membrane thickness and appropriate protection and drainage, refer to AVM System 500/502 Min Thickness Table.
3. Drain board must be connected to a permanent dewatering system if used in hydrostatic conditions.

Installation Below Water Table / Hydrostatic Conditions

1. All nails, screws etc used to hang the Aussie Skin below the water table must be non-rusting and sealed with a 3"x3" patch of Aussie Skin 550 bonded with Aussie tape.
2. Contact AVM for appropriate water stop system to be used.
3. Below the water table, drain board may be substituted with approved protection layer.