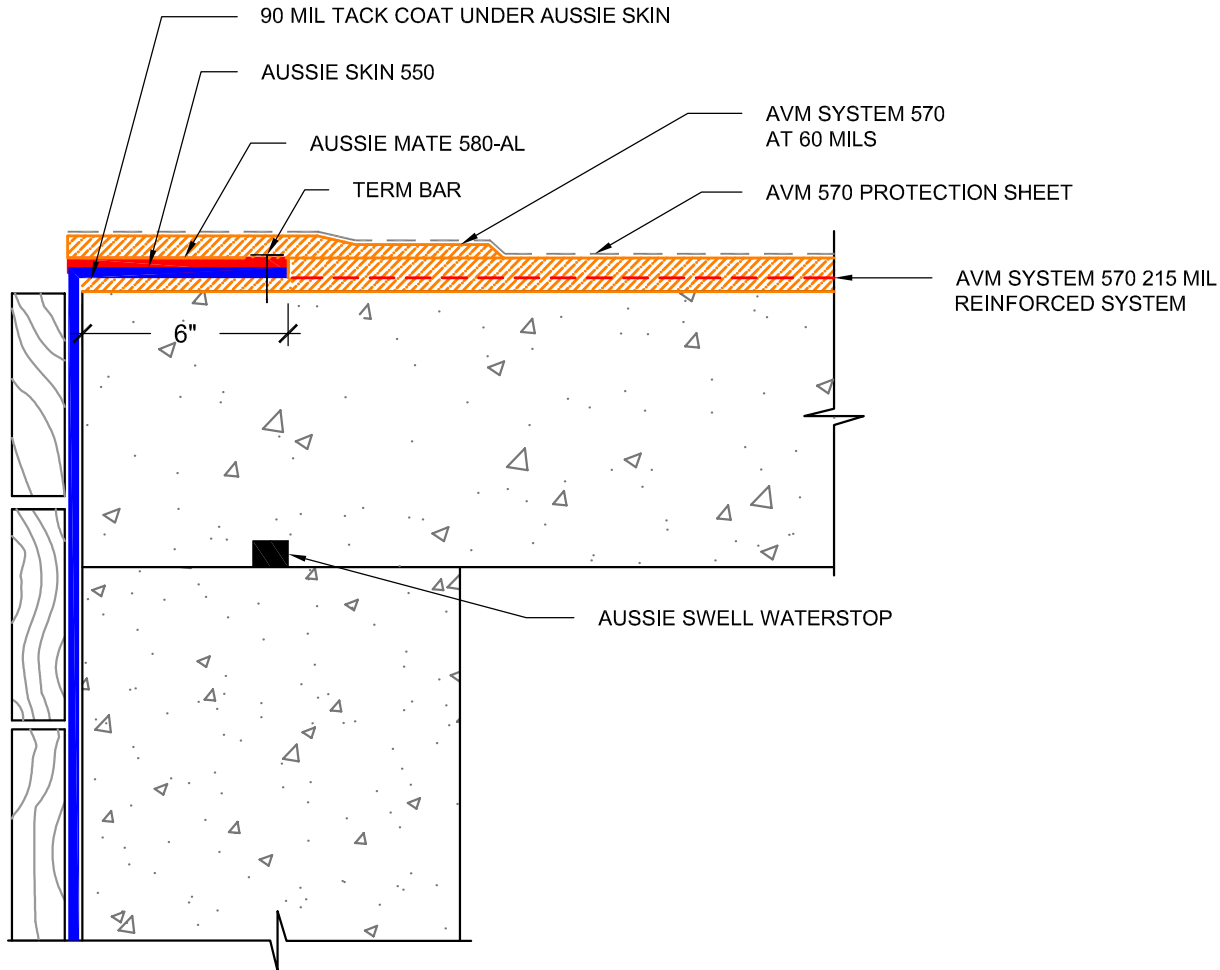


DETAIL #: AVM-0570-5002

AVM SYSTEM 570

TYPICAL PLAZA

Horizontal Transition to Aussie Skin
AVM Aussie Membrane 570
Hot Rubber



USE AVM ADHESIVE 501 ON CONCRETE RECEIVING AVM SYSTEM 570

NOTES:

1. Aussie Membrane 570 is a Hot Rubber(Hot-Applied Asphalt-Based Composition Membrane) for Between-Slabs, Planters, Roof-Gardens and similar type Waterproofing.
2. Typical membrane is 215 mils thick with fabric reinforcement. If specified differently, contact AVM for approval.
3. Contact AVM if no drain board or protection board is specified.
4. Remove/grind/repair as necessary any protrusions, sharp edges, etc that may puncture or damage the membrane.
5. Deck-to-Wall corners must be waterproofed as shown on AVM's Details.
6. Substrates must be sloped to drains and/or edges before membrane installation. (Min 1/4" per foot) Substrates must have sufficient drains and proper drainage systems to effectively evacuate excessive water.
7. If water is to drain over the edge, then edge metals **MUST** have sufficient weep holes (at least every 6") and must be strong enough (thick enough) to act as a concrete form.
8. Many edge details are possible. All must allow for proper water evacuation. (None should trap water) Consult AVM for details.
9. Drainage board for topping Slabs up to 4" thick for pedestrian applications; Use AVM Drain Board 6000.
10. Drainage board for topping slabs over 4" thick or for vehicular applications:Use AVM Drain Board 9000.

AVM Industries, Inc.
8245 Remmet Ave, Canoga Park, CA 91304

Quality Waterproofing Products

888.414.1041 818.888.0050
www.avmindustries.com

FILE NAME: **0570-5002-Horizontal-Transition-to-Aussie-Skin**
Protected by Copyright - AVM Industries, Inc.

Revision Date 3/5/2019