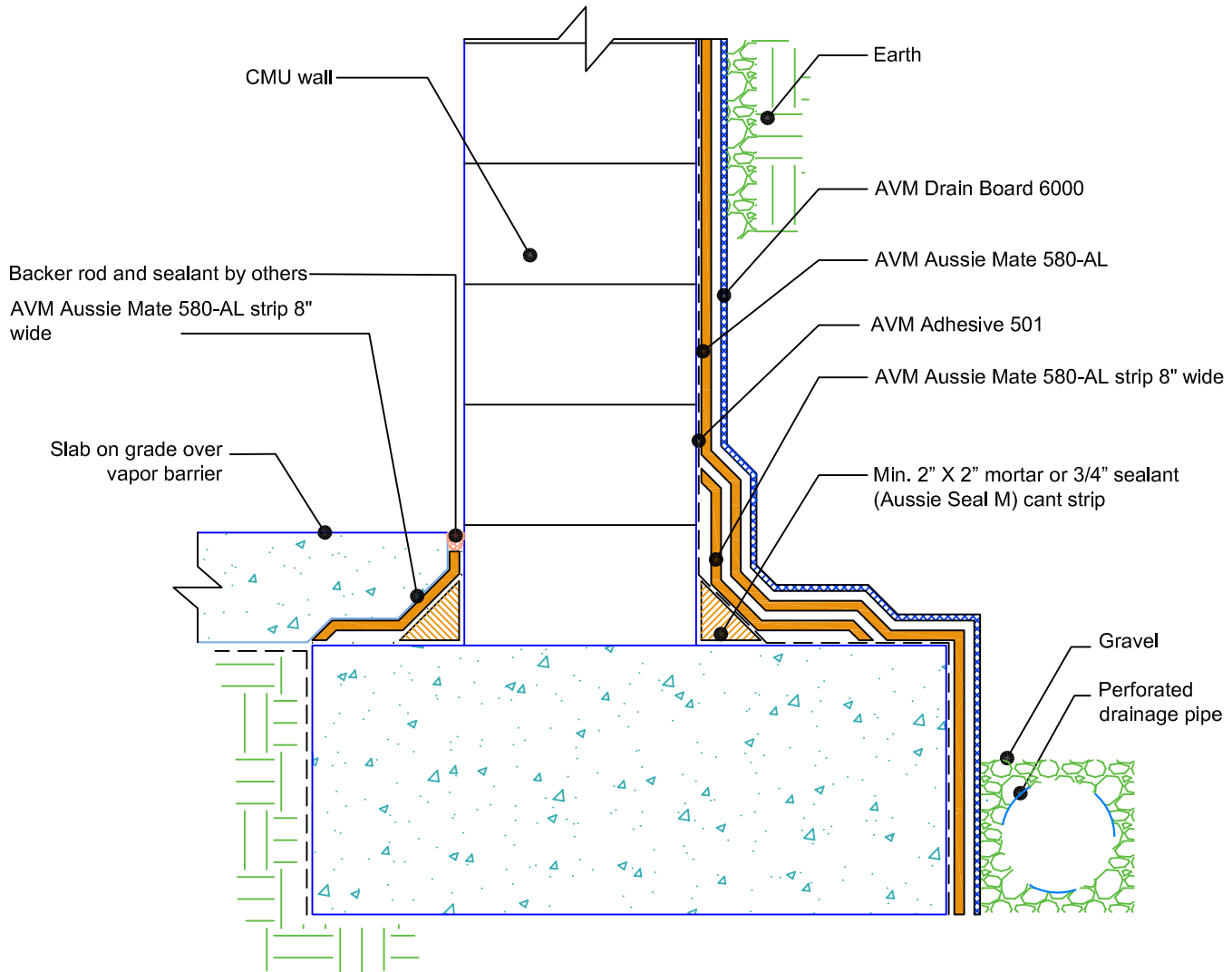


DETAIL #:  
AVM-0580-AL-0004-C

AVM SYSTEM 580-AL

AUSSIE MATE® 580-AL

Retaining Walls  
Slab on Grade at Top of Footing  
AVM AUSSIE MATE® 580-AL  
Bituminous Sheet Waterproofing.



NOTES:

1. Aussie Mate 580-AL is an LARR approved Waterproofing membrane and Methane Barrier.
2. Aussie Mate 580-AL is a UV stable, 60-mil heavy duty bituminous sheet membrane with aluminum protection layer for Below-Grade waterproofing applications. Aussie Mate 580-AL may also be used as a methane and/or vapor barrier under horizontal slabs on grade.
3. For applications from 25°F- 50°F, contact AVM for cold weather installation instructions.
4. For appropriate drainage/protection, use AVM Drain Board 6000.
5. Contact AVM if no drain board or protection board is specified.
6. AVM's "Bottom Drain 12" may be accepted in lieu of the perforated drainage pipe (French Drain). Check local building codes for approval.
7. Exposed top of footing is More than 3"
8. Inside corner (Wall-to-Footing) shown with Aussie Mate 580-AL corner detail
9. All Aussie Membrane 580-AL overlaps must be minimum 2".

AVM Industries, Inc.  
8245 Remmet Ave, Canoga Park, CA 91304

Quality Waterproofing Products

888.414.1041 818.888.0050  
www.avmindustries.com