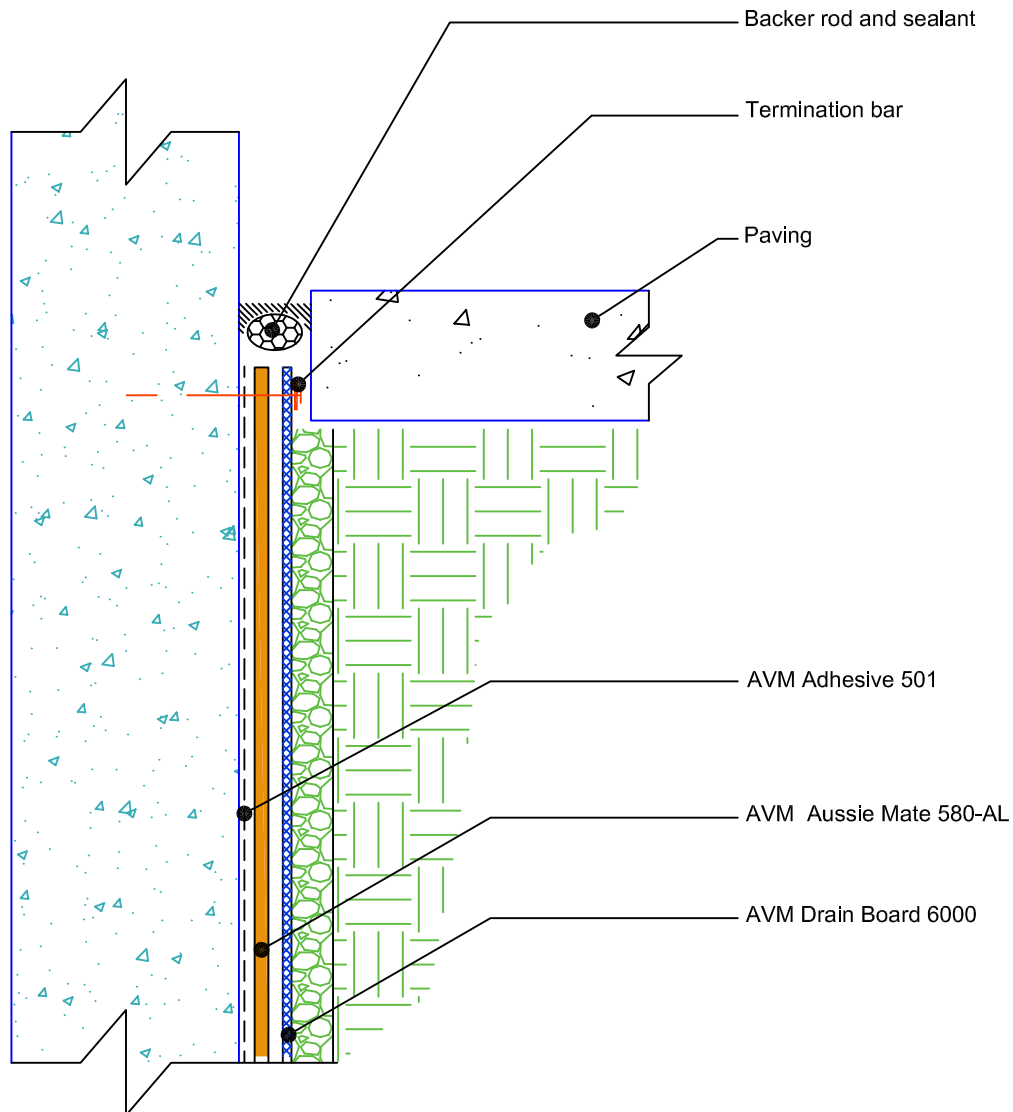


DETAIL #:  
AVM-0580-AL-6004-C

AUSSIE MATE® 580-AL

Terminations at Sidewalks on Grade  
AVM AUSSIE MATE® 580-AL  
Bituminous Sheet Waterproofing.



NOTES:

1. Aussie Mate 580-AL is an LARR approved Waterproofing membrane and Methane Barrier.
2. Aussie Mate 580-AL is a UV stable, 60-mil heavy duty bituminous sheet membrane with aluminum protection layer for Below-Grade waterproofing applications. Aussie Mate 580-AL may also be used as a methane and/or vapor barrier under horizontal slabs on grade.
3. For applications from 25°F- 50°F, contact AVM for cold weather installation instructions.
4. For appropriate drainage/protection, use AVM Drain Board 6000.
5. Contact AVM if no drain board or protection board is specified.